



City of Lawrence Housing Report



Market Overview

City of Lawrence Home Sales Rose in October

Total home sales in the City of Lawrence rose by 14.3% last month to 88 units, compared to 77 units in October 2023. Total sales volume was \$30.1 million, up 16.7% from a year earlier.

The median sale price in October was \$319,950, up from \$319,900 a year earlier. Homes that sold in October were typically on the market for 12 days and sold for 99.8% of their list prices.

City of Lawrence Active Listings Up at End of October

The total number of active listings in the City of Lawrence at the end of October was 190 units, up from 149 at the same point in 2023. This represents a 2.6 months' supply of homes available for sale. The median list price of homes on the market at the end of October was \$347,450.

There were 66 contracts written in October 2024 and 2023, showing no change over the year. At the end of the month, there were 92 contracts still pending.

Report Contents

- Summary Statistics – Page 2
- Closed Listing Analysis – Page 3
- Active Listings Analysis – Page 7
- Months' Supply Analysis – Page 11
- New Listings Analysis – Page 12
- Contracts Written Analysis – Page 15
- Pending Contracts Analysis – Page 19

Contact Information

Rob Hulse, Executive Vice-President
 Lawrence Board of REALTORS®
 3838 W. 6th Street (at Monterey)
 Lawrence, KS 66049
 785-842-1843
Rob@LawrenceRealtor.com
www.LawrenceRealtor.com



**October
2024**

Lawrence MLS Statistics



City of Lawrence Summary Statistics

October MLS Statistics Three-year History		Current Month			Year-to-Date		
		2024	2023	2022	2024	2023	2022
Home Sales		88	77	100	774	757	1,005
Change from prior year		14.3%	-23.0%	4.2%	2.2%	-24.7%	-9.3%
Active Listings		190	149	105	N/A	N/A	N/A
Change from prior year		27.5%	41.9%	-9.5%			
Months' Supply		2.6	2.0	1.1	N/A	N/A	N/A
Change from prior year		30.0%	81.8%	0.0%			
New Listings		107	96	71	1,114	998	1,185
Change from prior year		11.5%	35.2%	-23.7%	11.6%	-15.8%	-11.1%
Contracts Written		66	66	79	808	774	997
Change from prior year		0.0%	-16.5%	-10.2%	4.4%	-22.4%	-12.3%
Pending Contracts		92	72	82	N/A	N/A	N/A
Change from prior year		27.8%	-12.2%	-37.4%			
Sales Volume (1,000s)		30,108	25,807	33,051	268,032	255,118	330,691
Change from prior year		16.7%	-21.9%	24.7%	5.1%	-22.9%	1.3%
Average	Sale Price	342,135	335,150	330,510	346,295	337,012	329,046
	Change from prior year	2.1%	1.4%	19.7%	2.8%	2.4%	11.7%
	List Price of Actives	398,530	373,865	372,396	N/A	N/A	N/A
	Change from prior year	6.6%	0.4%	7.6%			
	Days on Market	27	25	16	23	19	14
Change from prior year	8.0%	56.3%	6.7%	21.1%	35.7%	-12.5%	
Percent of List	98.6%	98.9%	99.1%	99.2%	100.6%	101.7%	
Change from prior year	-0.3%	-0.2%	-0.3%	-1.4%	-1.1%	0.1%	
Percent of Original	97.4%	97.3%	97.8%	98.4%	100.0%	101.0%	
Change from prior year	0.1%	-0.5%	-0.3%	-1.6%	-1.0%	0.1%	
Median	Sale Price	319,950	319,900	307,000	315,000	305,000	295,000
	Change from prior year	0.0%	4.2%	25.3%	3.3%	3.4%	13.5%
	List Price of Actives	347,450	349,900	339,000	N/A	N/A	N/A
	Change from prior year	-0.7%	3.2%	3.3%			
	Days on Market	12	9	5	8	4	4
Change from prior year	33.3%	80.0%	0.0%	100.0%	0.0%	33.3%	
Percent of List	99.8%	100.0%	100.0%	100.0%	100.0%	100.0%	
Change from prior year	-0.2%	0.0%	0.0%	0.0%	0.0%	0.0%	
Percent of Original	98.9%	98.0%	99.8%	100.0%	100.0%	100.0%	
Change from prior year	0.9%	-1.8%	-0.2%	0.0%	0.0%	0.0%	

Note: Year-to-date statistics cannot be calculated for Active Listings, Months' Supply and Pending Contracts.



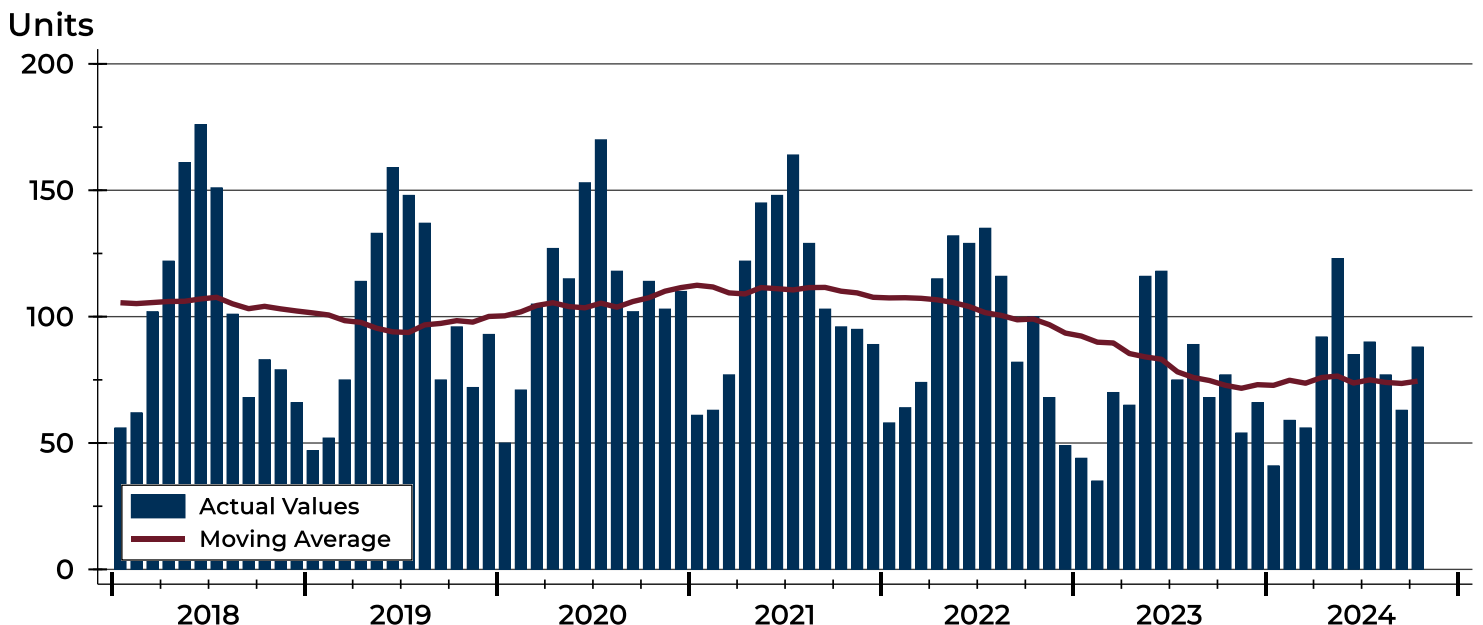
City of Lawrence Closed Listings Analysis

Summary Statistics for Closed Listings		2024	October 2023	Change	2024	Year-to-Date 2023	Change
Closed Listings		88	77	14.3%	774	757	2.2%
Volume (1,000s)		30,108	25,807	16.7%	268,032	255,118	5.1%
Months' Supply		2.6	2.0	30.0%	N/A	N/A	N/A
Average	Sale Price	342,135	335,150	2.1%	346,295	337,012	2.8%
	Days on Market	27	25	8.0%	23	19	21.1%
	Percent of List	98.6%	98.9%	-0.3%	99.2%	100.6%	-1.4%
	Percent of Original	97.4%	97.3%	0.1%	98.4%	100.0%	-1.6%
Median	Sale Price	319,950	319,900	0.0%	315,000	305,000	3.3%
	Days on Market	12	9	33.3%	8	4	100.0%
	Percent of List	99.8%	100.0%	-0.2%	100.0%	100.0%	0.0%
	Percent of Original	98.9%	98.0%	0.9%	100.0%	100.0%	0.0%

A total of 88 homes sold in the City of Lawrence in October, up from 77 units in October 2023. Total sales volume rose to \$30.1 million compared to \$25.8 million in the previous year.

The median sales price in October was \$319,950, essentially the same as in the prior year. Median days on market was 12 days, down from 20 days in September, but up from 9 in October 2023.

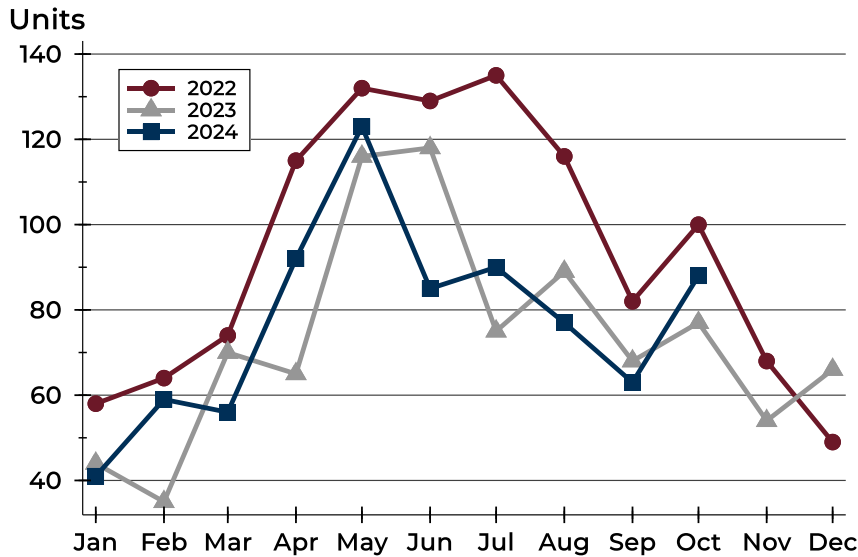
History of Closed Listings





City of Lawrence Closed Listings Analysis

Closed Listings by Month



Month	2022	2023	2024
January	58	44	41
February	64	35	59
March	74	70	56
April	115	65	92
May	132	116	123
June	129	118	85
July	135	75	90
August	116	89	77
September	82	68	63
October	100	77	88
November	68	54	
December	49	66	

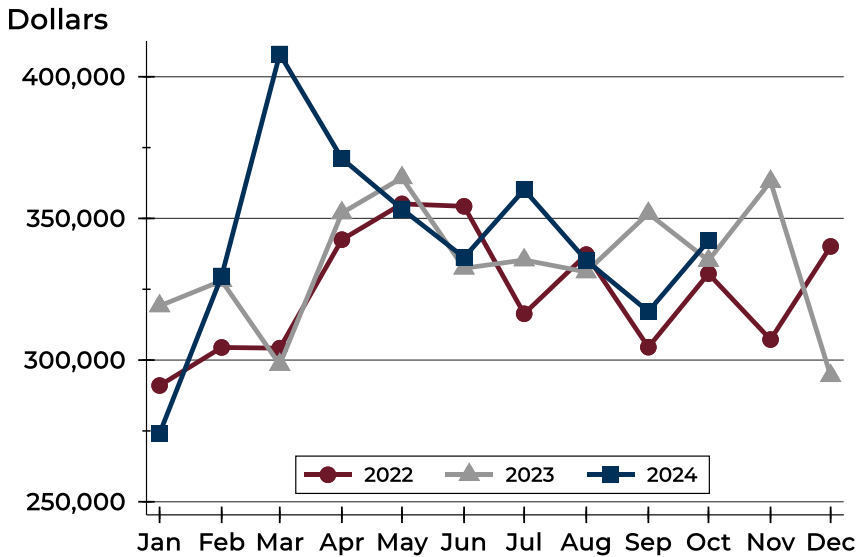
Closed Listings by Price Range

Price Range	Sales		Months' Supply	Sale Price		Days on Market		Price as % of List		Price as % of Orig.	
	Number	Percent		Average	Median	Avg.	Med.	Avg.	Med.	Avg.	Med.
Below \$50,000	0	0.0%	N/A	N/A	N/A	N/A	N/A	N/A	N/A	N/A	N/A
\$50,000-\$99,999	2	2.3%	5.0	98,499	98,499	30	30	87.0%	87.0%	80.8%	80.8%
\$100,000-\$149,999	1	1.1%	6.0	140,000	140,000	56	56	93.3%	93.3%	84.8%	84.8%
\$150,000-\$199,999	10	11.4%	2.7	178,665	181,250	56	26	99.9%	100.0%	100.3%	100.0%
\$200,000-\$249,999	12	13.6%	1.5	220,117	215,000	31	27	98.1%	100.0%	95.1%	96.7%
\$250,000-\$299,999	14	15.9%	1.3	276,673	279,000	22	24	98.2%	99.1%	97.2%	98.0%
\$300,000-\$349,999	14	15.9%	2.0	326,577	322,500	12	4	100.2%	100.0%	99.5%	100.0%
\$350,000-\$399,999	11	12.5%	2.8	372,082	374,000	13	8	98.1%	97.4%	97.8%	97.4%
\$400,000-\$449,999	9	10.2%	2.4	419,311	419,000	26	33	98.8%	99.8%	97.1%	98.6%
\$450,000-\$499,999	4	4.5%	2.3	458,750	455,000	52	62	98.9%	99.0%	98.3%	97.9%
\$500,000-\$599,999	7	8.0%	3.7	538,236	525,000	32	10	99.1%	99.8%	98.4%	98.8%
\$600,000-\$749,999	3	3.4%	4.9	642,667	629,000	5	5	100.0%	100.0%	100.0%	100.0%
\$750,000-\$999,999	0	0.0%	N/A	N/A	N/A	N/A	N/A	N/A	N/A	N/A	N/A
\$1,000,000 and up	1	1.1%	10.3	1,500,000	1,500,000	13	13	96.2%	96.2%	96.2%	96.2%



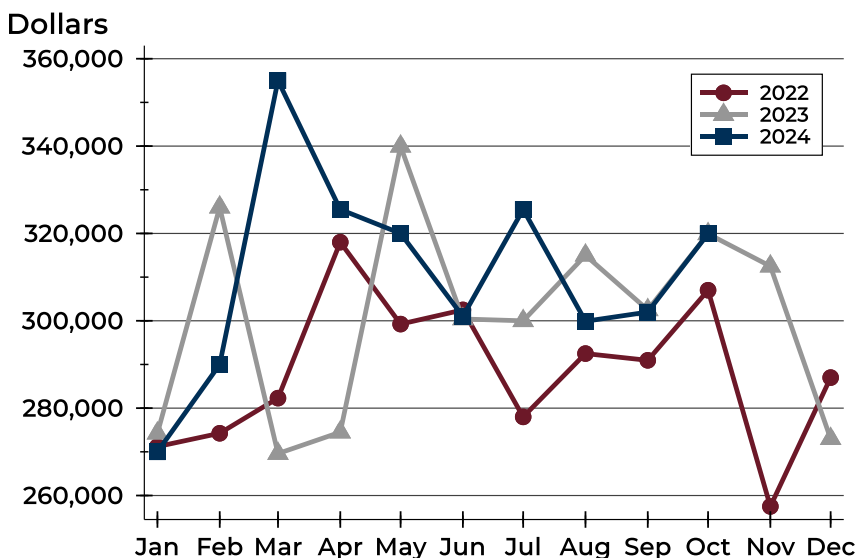
City of Lawrence Closed Listings Analysis

Average Price



Month	2022	2023	2024
January	291,023	319,116	274,119
February	304,454	327,994	329,665
March	304,215	298,441	408,006
April	342,504	351,932	371,161
May	355,125	364,323	353,316
June	354,276	332,429	336,234
July	316,345	335,322	360,140
August	337,220	331,109	335,190
September	304,560	351,738	317,140
October	330,510	335,150	342,135
November	307,240	363,014	
December	340,120	294,469	

Median Price

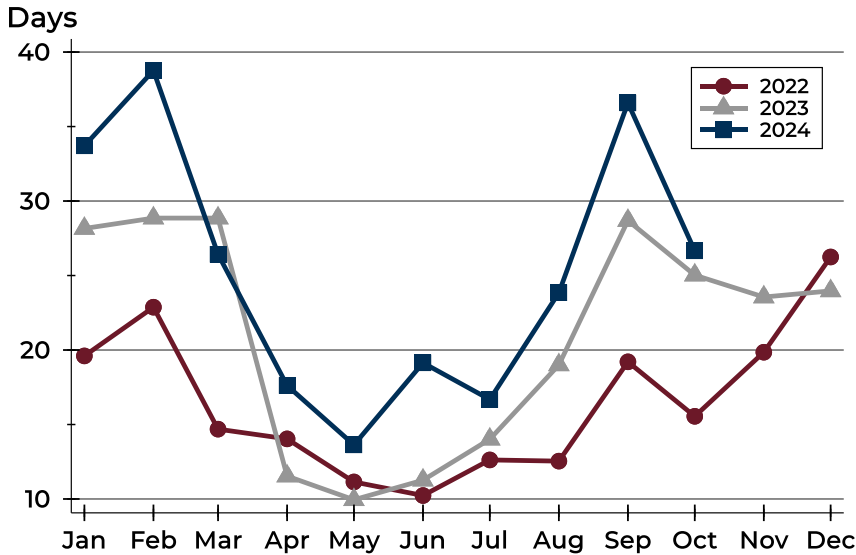


Month	2022	2023	2024
January	271,200	274,250	270,000
February	274,250	326,000	290,000
March	282,300	269,600	355,000
April	318,000	274,500	325,500
May	299,243	339,950	320,000
June	302,500	300,415	301,000
July	278,000	300,000	325,500
August	292,500	315,000	299,900
September	290,950	302,500	302,000
October	307,000	319,900	319,950
November	257,500	312,500	
December	287,000	273,000	



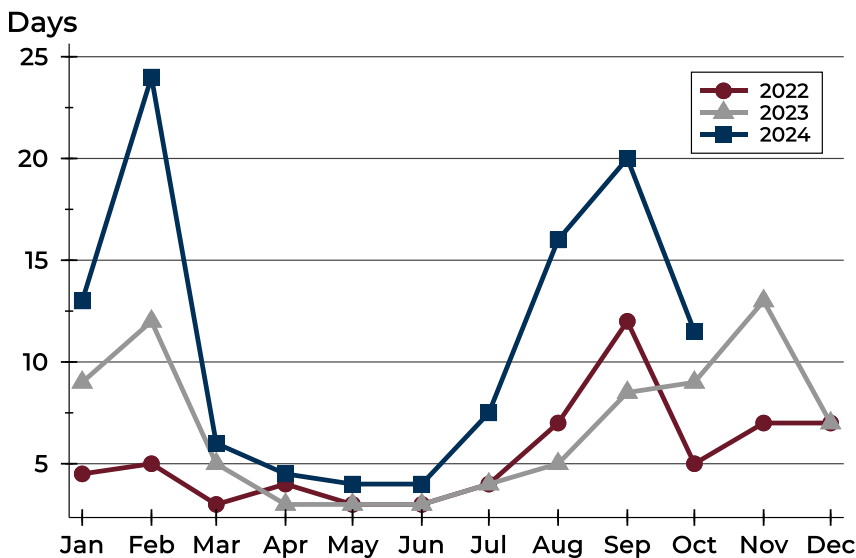
City of Lawrence Closed Listings Analysis

Average DOM



Month	2022	2023	2024
January	20	28	34
February	23	29	39
March	15	29	26
April	14	12	18
May	11	10	14
June	10	11	19
July	13	14	17
August	13	19	24
September	19	29	37
October	16	25	27
November	20	24	
December	26	24	

Median DOM



Month	2022	2023	2024
January	5	9	13
February	5	12	24
March	3	5	6
April	4	3	5
May	3	3	4
June	3	3	4
July	4	4	8
August	7	5	16
September	12	9	20
October	5	9	12
November	7	13	
December	7	7	



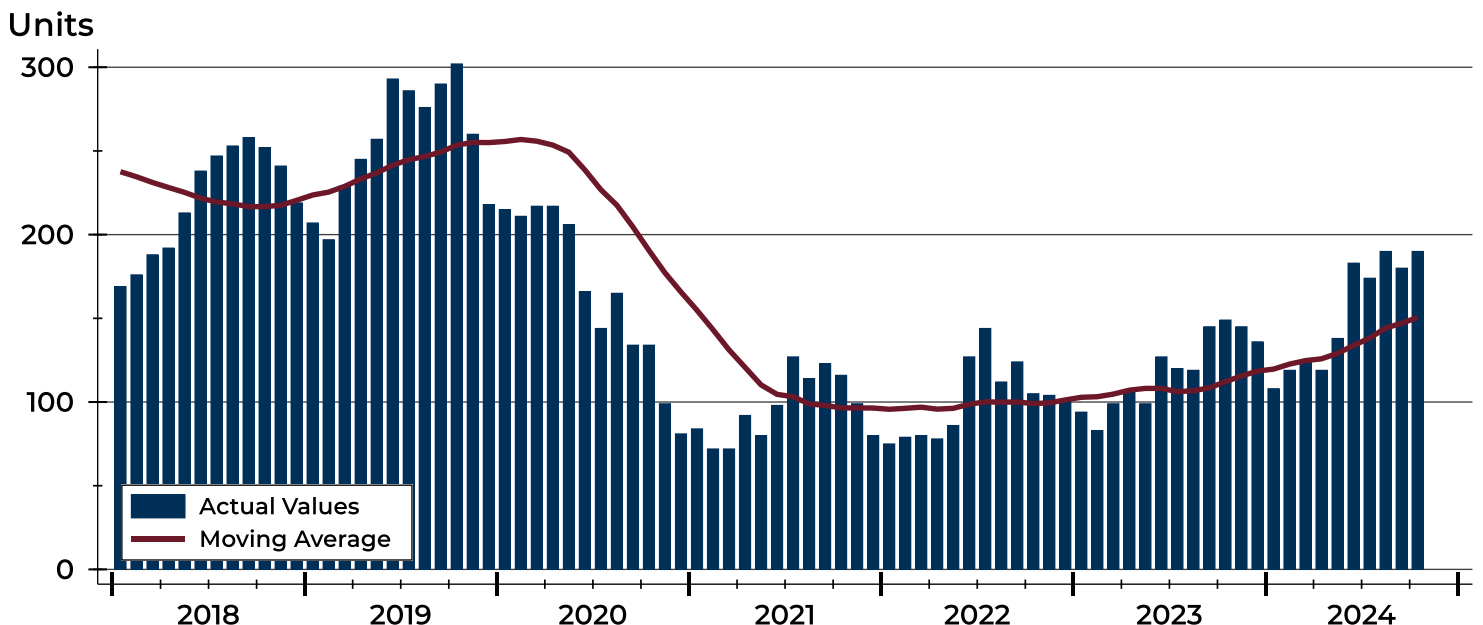
City of Lawrence Active Listings Analysis

Summary Statistics for Active Listings		2024	End of October 2023	Change
Active Listings		190	149	27.5%
Volume (1,000s)		75,721	55,706	35.9%
Months' Supply		2.6	2.0	30.0%
Average	List Price	398,530	373,865	6.6%
	Days on Market	65	53	22.6%
	Percent of Original	98.2%	98.4%	-0.2%
Median	List Price	347,450	349,900	-0.7%
	Days on Market	46	31	48.4%
	Percent of Original	100.0%	100.0%	0.0%

A total of 190 homes were available for sale in the City of Lawrence at the end of October. This represents a 2.6 months' supply of active listings.

The median list price of homes on the market at the end of October was \$347,450, down 0.7% from 2023. The typical time on market for active listings was 46 days, up from 31 days a year earlier.

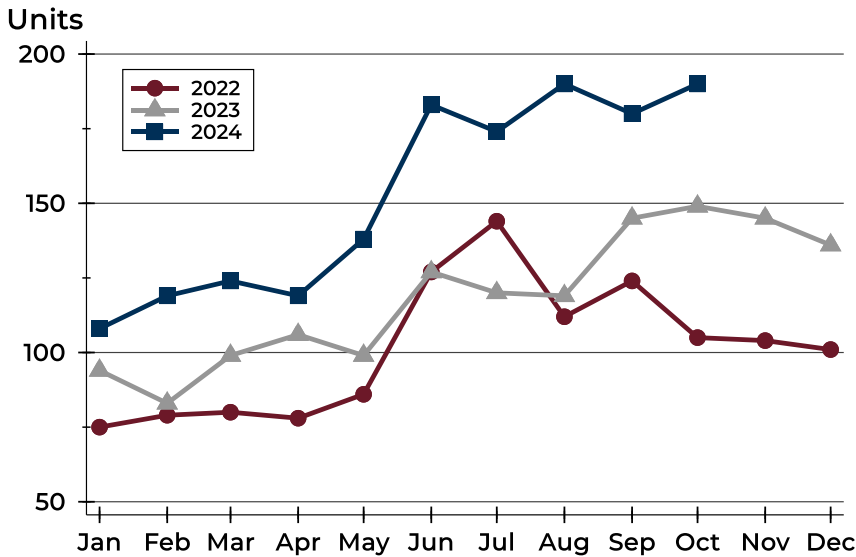
History of Active Listings





City of Lawrence Active Listings Analysis

Active Listings by Month



Month	2022	2023	2024
January	75	94	108
February	79	83	119
March	80	99	124
April	78	106	119
May	86	99	138
June	127	127	183
July	144	120	174
August	112	119	190
September	124	145	180
October	105	149	190
November	104	145	
December	101	136	

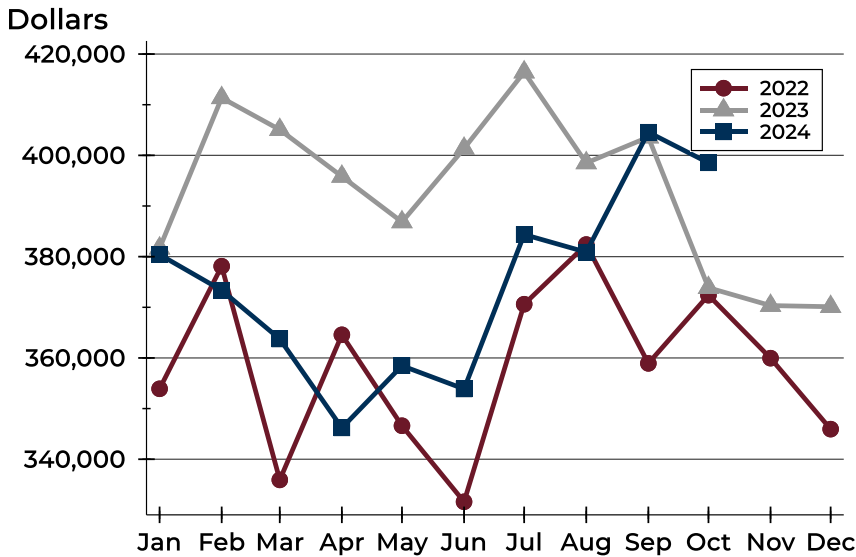
Active Listings by Price Range

Price Range	Active Listings Number	Active Listings Percent	Months' Supply	List Price Average	List Price Median	Days on Market Avg.	Days on Market Med.	Price as % of Orig. Avg.	Price as % of Orig. Med.
Below \$50,000	3	1.6%	N/A	1,982	1,750	29	22	99.0%	100.0%
\$50,000-\$99,999	5	2.6%	5.0	86,924	89,950	53	25	94.2%	100.0%
\$100,000-\$149,999	15	7.9%	6.0	126,240	125,000	44	36	94.9%	94.6%
\$150,000-\$199,999	19	10.0%	2.7	173,821	164,500	67	35	99.3%	100.0%
\$200,000-\$249,999	16	8.4%	1.5	228,044	227,950	101	58	98.4%	100.0%
\$250,000-\$299,999	17	8.9%	1.3	283,782	279,900	42	31	97.6%	100.0%
\$300,000-\$349,999	23	12.1%	2.0	322,709	318,900	59	47	98.7%	100.0%
\$350,000-\$399,999	25	13.2%	2.8	373,102	374,900	52	50	99.1%	100.0%
\$400,000-\$449,999	12	6.3%	2.4	432,525	436,000	60	46	98.1%	98.9%
\$450,000-\$499,999	11	5.8%	2.3	483,909	485,000	76	45	98.7%	100.0%
\$500,000-\$599,999	19	10.0%	3.7	543,357	548,000	82	50	98.5%	100.0%
\$600,000-\$749,999	13	6.8%	4.9	686,638	689,000	65	42	98.4%	100.0%
\$750,000-\$999,999	6	3.2%	N/A	860,633	846,950	55	48	98.9%	100.0%
\$1,000,000 and up	6	3.2%	10.3	1,655,667	1,670,000	127	83	96.8%	100.0%



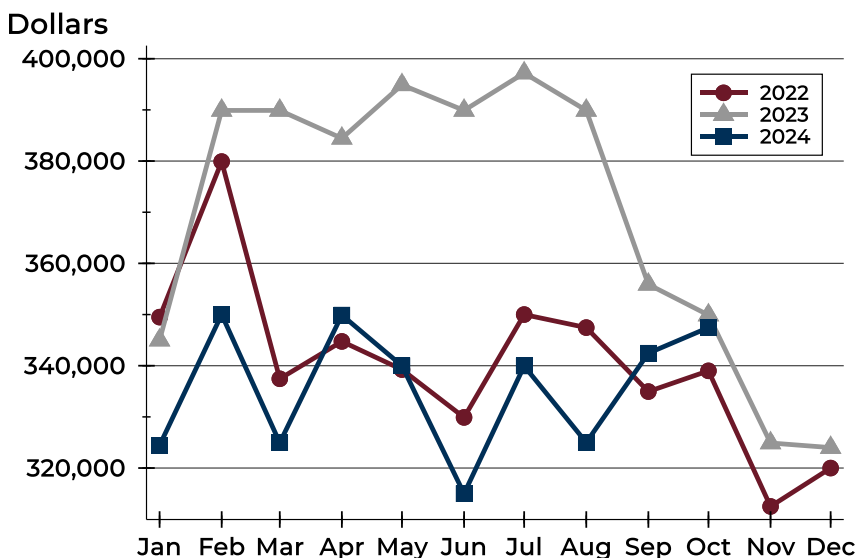
City of Lawrence Active Listings Analysis

Average Price



Month	2022	2023	2024
January	353,910	381,662	380,405
February	378,114	411,359	373,361
March	335,920	405,067	363,744
April	364,571	395,842	346,189
May	346,614	386,853	358,466
June	331,603	401,362	353,875
July	370,614	416,435	384,366
August	382,390	398,505	380,883
September	358,932	403,598	404,570
October	372,396	373,865	398,530
November	359,954	370,337	
December	345,946	370,118	

Median Price

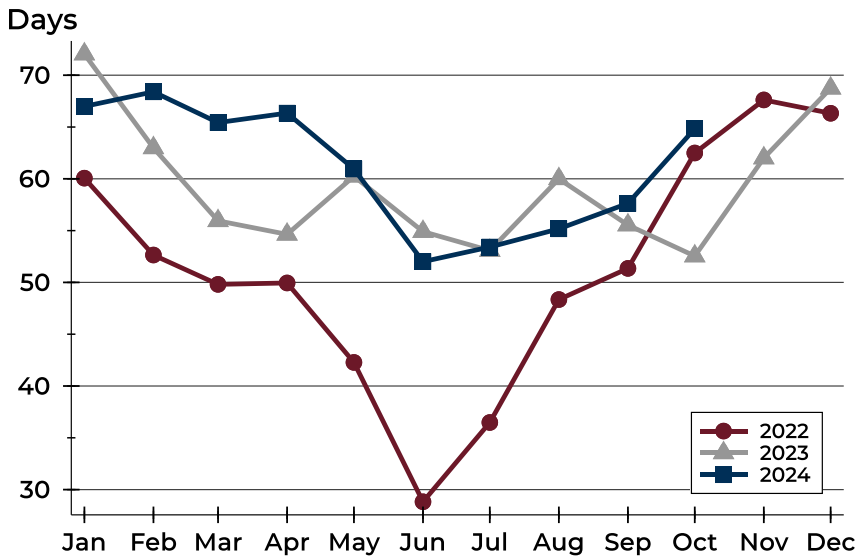


Month	2022	2023	2024
January	349,500	345,000	324,450
February	379,900	389,900	350,000
March	337,450	389,900	324,950
April	344,750	384,450	349,900
May	339,250	394,900	340,000
June	329,900	389,900	315,000
July	350,000	397,200	339,950
August	347,450	389,900	325,000
September	334,950	355,900	342,450
October	339,000	349,900	347,450
November	312,500	324,900	
December	320,000	324,000	



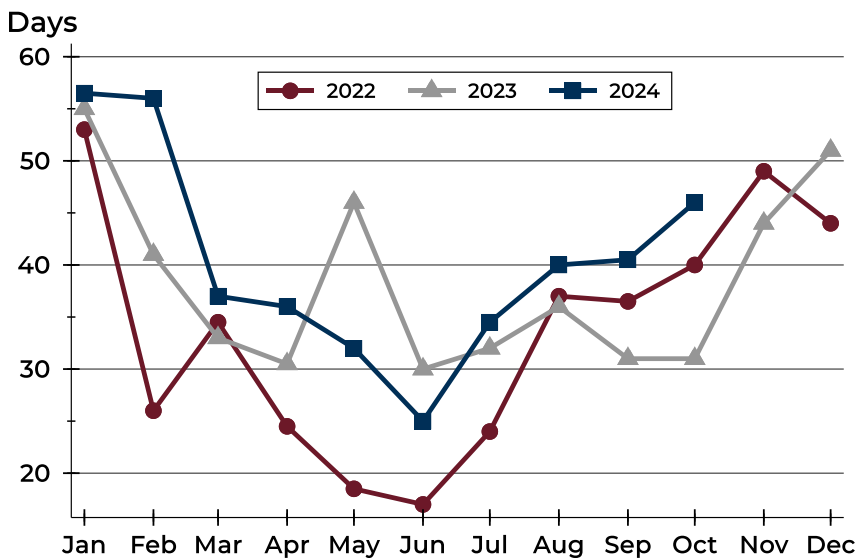
City of Lawrence Active Listings Analysis

Average DOM



Month	2022	2023	2024
January	60	72	67
February	53	63	68
March	50	56	65
April	50	55	66
May	42	60	61
June	29	55	52
July	36	53	53
August	48	60	55
September	51	56	58
October	62	53	65
November	68	62	
December	66	69	

Median DOM

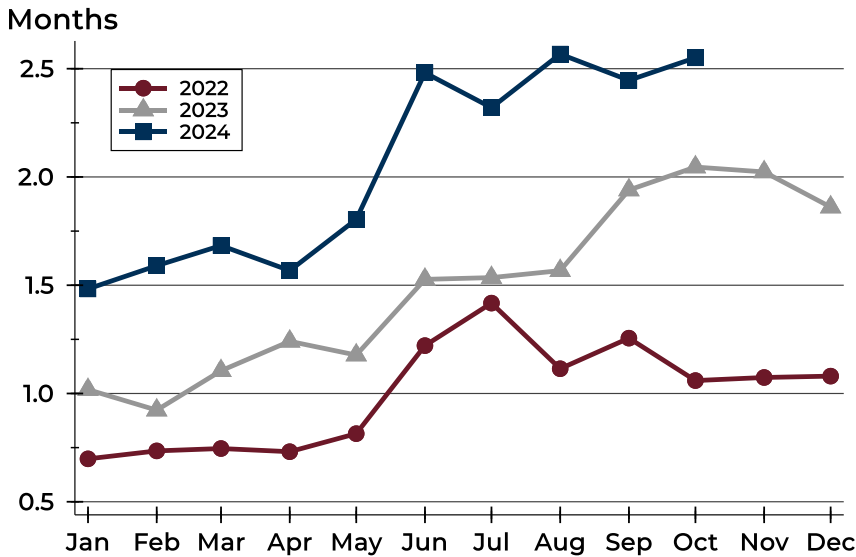


Month	2022	2023	2024
January	53	55	57
February	26	41	56
March	35	33	37
April	25	31	36
May	19	46	32
June	17	30	25
July	24	32	35
August	37	36	40
September	37	31	41
October	40	31	46
November	49	44	
December	44	51	



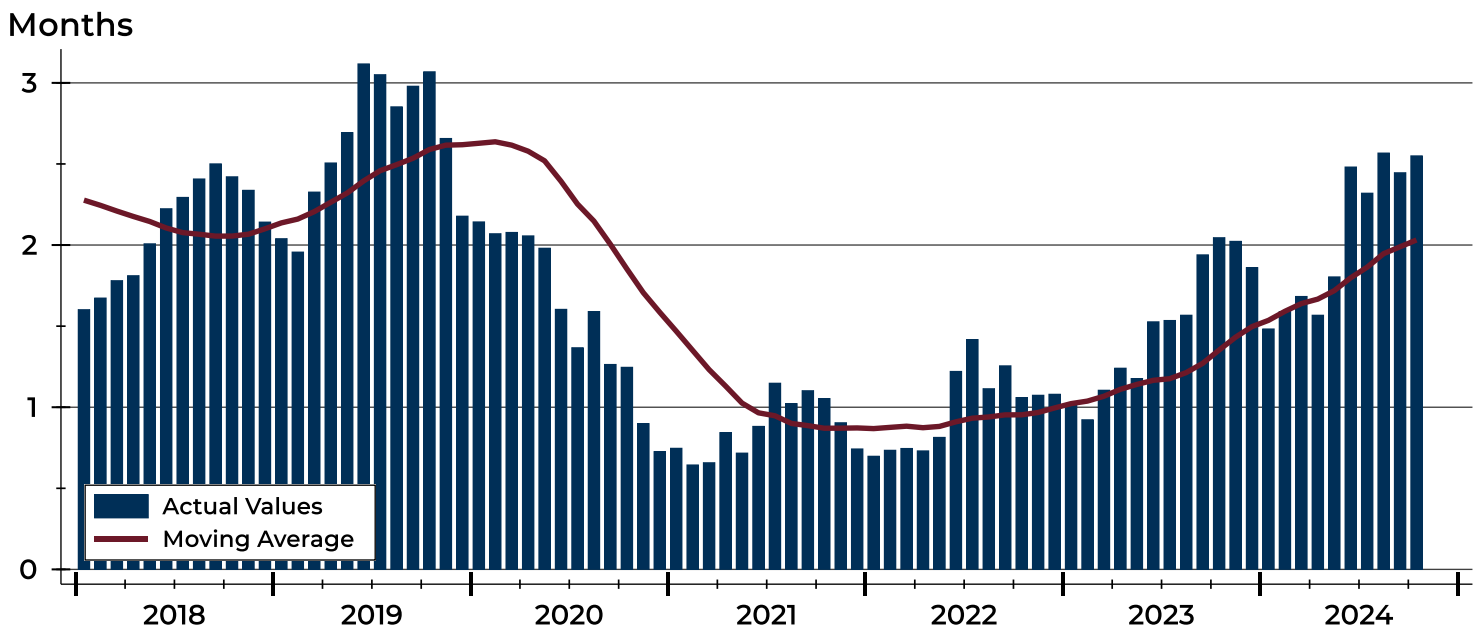
City of Lawrence Months' Supply Analysis

Months' Supply by Month



Month	2022	2023	2024
January	0.7	1.0	1.5
February	0.7	0.9	1.6
March	0.7	1.1	1.7
April	0.7	1.2	1.6
May	0.8	1.2	1.8
June	1.2	1.5	2.5
July	1.4	1.5	2.3
August	1.1	1.6	2.6
September	1.3	1.9	2.4
October	1.1	2.0	2.6
November	1.1	2.0	
December	1.1	1.9	

History of Month's Supply





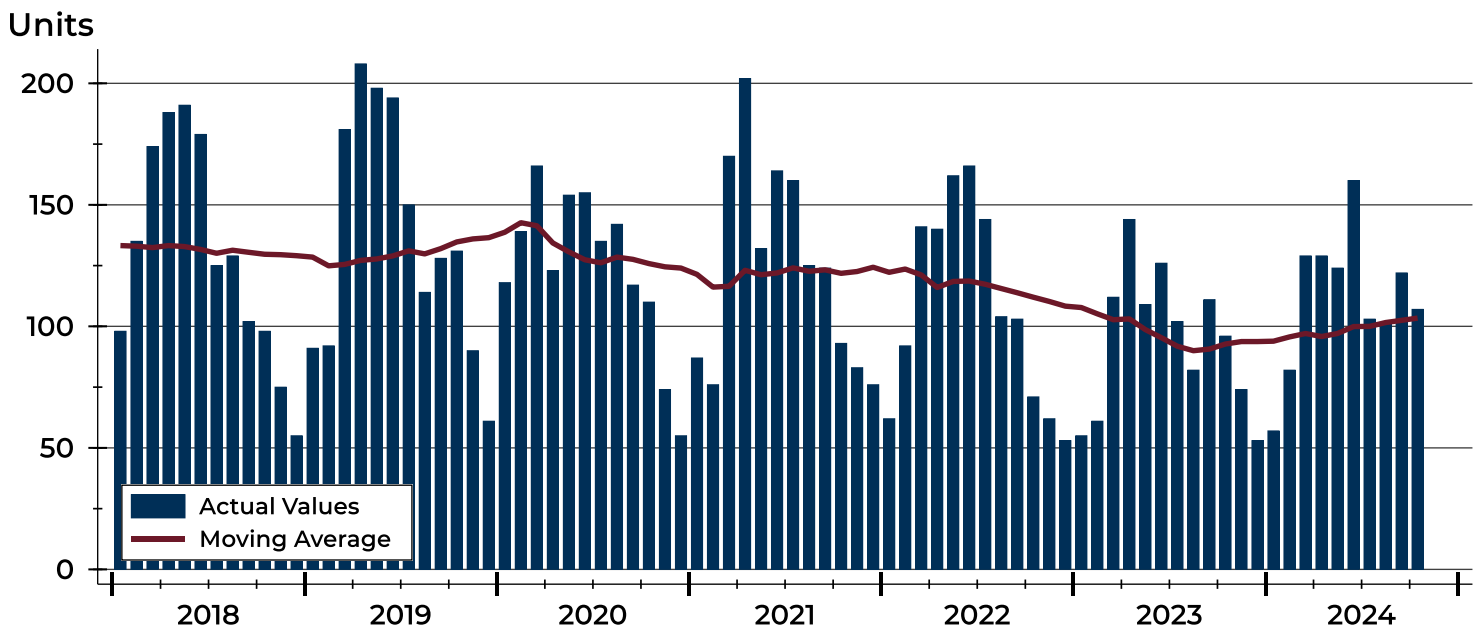
City of Lawrence New Listings Analysis

Summary Statistics for New Listings		2024	October 2023	Change
Current Month	New Listings	107	96	11.5%
	Volume (1,000s)	37,335	32,538	14.7%
	Average List Price	348,924	338,933	2.9%
	Median List Price	324,900	299,900	8.3%
Year-to-Date	New Listings	1,114	998	11.6%
	Volume (1,000s)	398,593	339,191	17.5%
	Average List Price	357,803	339,871	5.3%
	Median List Price	319,900	310,000	3.2%

A total of 107 new listings were added in the City of Lawrence during October, up 11.5% from the same month in 2023. Year-to-date the City of Lawrence has seen 1,114 new listings.

The median list price of these homes was \$324,900 up from \$299,900 in 2023.

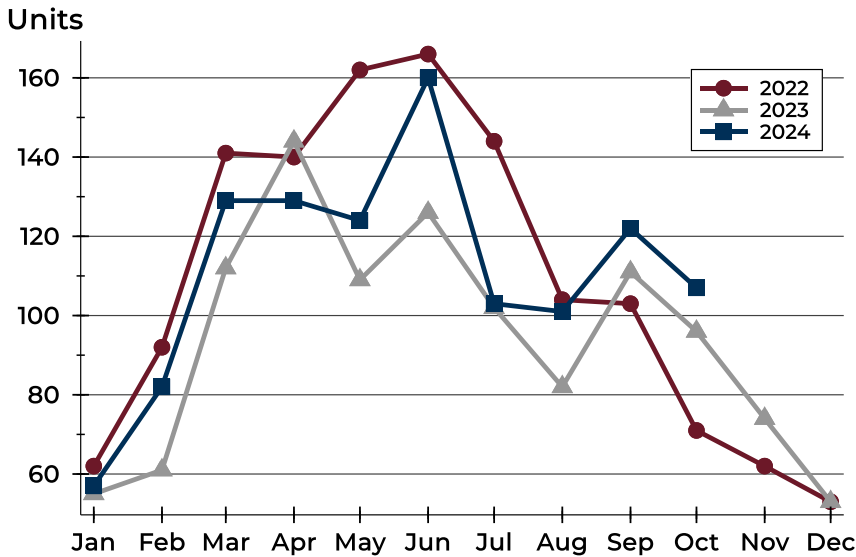
History of New Listings





City of Lawrence New Listings Analysis

New Listings by Month



Month	2022	2023	2024
January	62	55	57
February	92	61	82
March	141	112	129
April	140	144	129
May	162	109	124
June	166	126	160
July	144	102	103
August	104	82	101
September	103	111	122
October	71	96	107
November	62	74	
December	53	53	

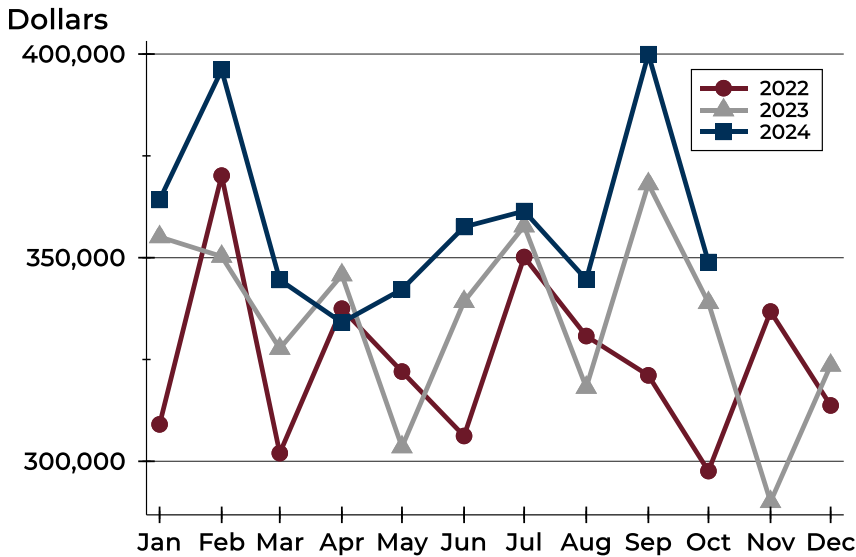
New Listings by Price Range

Price Range	New Listings		List Price		Days on Market		Price as % of Orig.	
	Number	Percent	Average	Median	Avg.	Med.	Avg.	Med.
Below \$50,000	2	1.9%	1,750	1,750	14	14	100.0%	100.0%
\$50,000-\$99,999	1	0.9%	95,000	95,000	31	31	100.0%	100.0%
\$100,000-\$149,999	4	3.7%	129,550	130,950	14	9	97.9%	99.9%
\$150,000-\$199,999	12	11.2%	184,250	194,450	18	20	99.5%	100.0%
\$200,000-\$249,999	12	11.2%	222,000	222,450	14	12	100.3%	100.0%
\$250,000-\$299,999	14	13.1%	280,164	279,450	15	13	99.4%	100.0%
\$300,000-\$349,999	19	17.8%	327,405	325,000	9	5	99.9%	100.0%
\$350,000-\$399,999	15	14.0%	379,490	379,900	14	11	99.5%	100.0%
\$400,000-\$449,999	6	5.6%	437,450	437,450	17	14	99.8%	100.0%
\$450,000-\$499,999	5	4.7%	481,360	489,900	13	8	100.0%	100.0%
\$500,000-\$599,999	8	7.5%	538,300	541,500	16	14	99.6%	100.0%
\$600,000-\$749,999	6	5.6%	690,450	694,450	17	19	99.6%	100.0%
\$750,000-\$999,999	3	2.8%	842,414	832,242	10	0	100.0%	100.0%
\$1,000,000 and up	0	0.0%	N/A	N/A	N/A	N/A	N/A	N/A



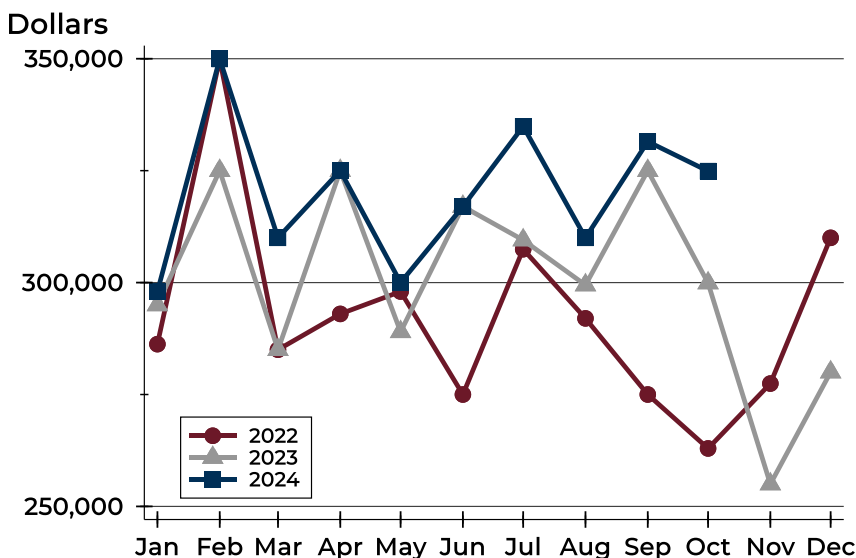
City of Lawrence New Listings Analysis

Average Price



Month	2022	2023	2024
January	309,069	355,103	364,190
February	370,146	350,309	396,092
March	302,005	327,690	344,545
April	337,476	345,750	334,092
May	322,036	303,520	342,222
June	306,220	339,209	357,548
July	350,165	357,767	361,443
August	330,760	318,123	344,636
September	321,108	368,120	399,961
October	297,609	338,933	348,924
November	336,777	290,067	
December	313,717	323,562	

Median Price



Month	2022	2023	2024
January	286,250	295,000	298,000
February	349,900	325,000	349,950
March	285,000	285,000	310,000
April	293,000	325,000	325,000
May	298,000	289,000	300,000
June	275,000	317,000	317,000
July	307,450	309,500	334,900
August	292,000	299,450	310,000
September	275,000	325,000	331,500
October	262,950	299,900	324,900
November	277,450	255,000	
December	310,000	280,000	



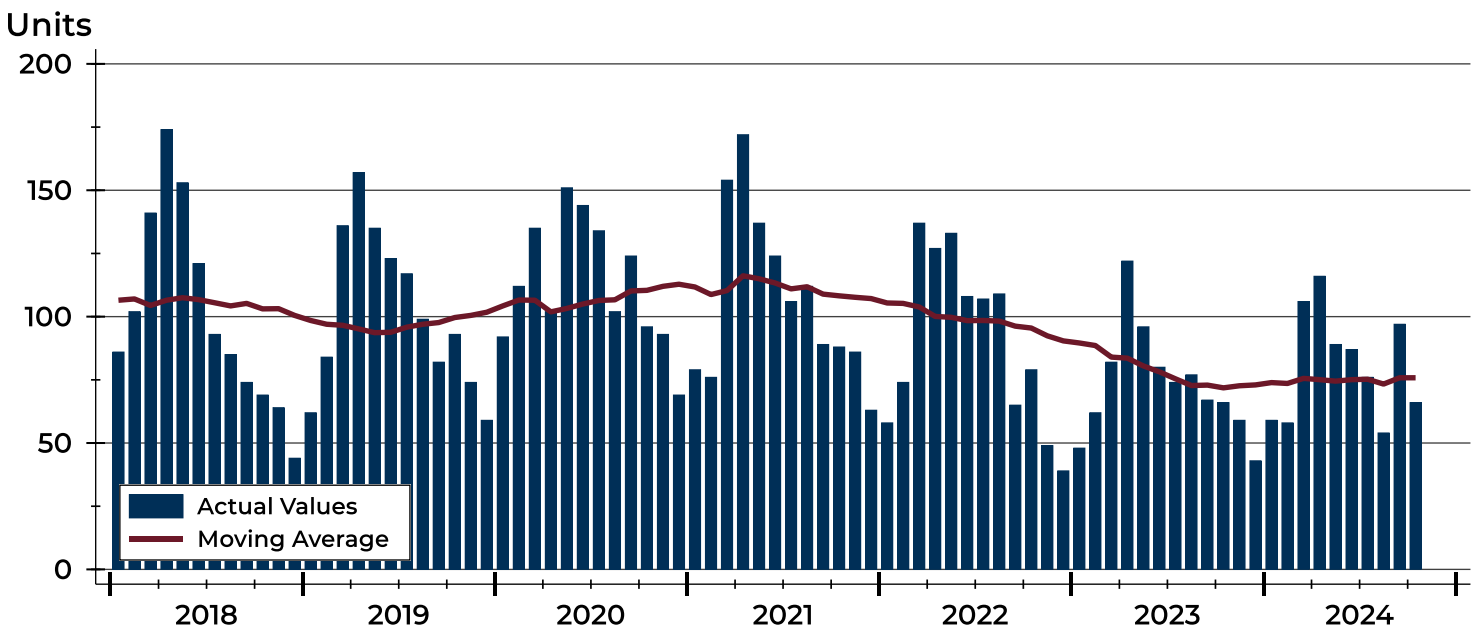
City of Lawrence Contracts Written Analysis

Summary Statistics for Contracts Written		2024	October 2023	Change	2024	Year-to-Date 2023	Change
Contracts Written		66	66	0.0%	808	774	4.4%
Volume (1,000s)		21,354	23,786	-10.2%	284,466	260,970	9.0%
Average	Sale Price	323,548	360,391	-10.2%	352,062	337,170	4.4%
	Days on Market	23	25	-8.0%	22	19	15.8%
	Percent of Original	98.1%	97.8%	0.3%	98.5%	99.9%	-1.4%
Median	Sale Price	319,450	319,000	0.1%	315,000	300,000	5.0%
	Days on Market	7	10	-30.0%	7	4	75.0%
	Percent of Original	100.0%	98.2%	1.8%	100.0%	100.0%	0.0%

A total of 66 contracts for sale were written in the City of Lawrence during the month of October, the same as in 2023. The median list price of these homes was \$319,450, up from \$319,000 the prior year.

Half of the homes that went under contract in October were on the market less than 7 days, compared to 10 days in October 2023.

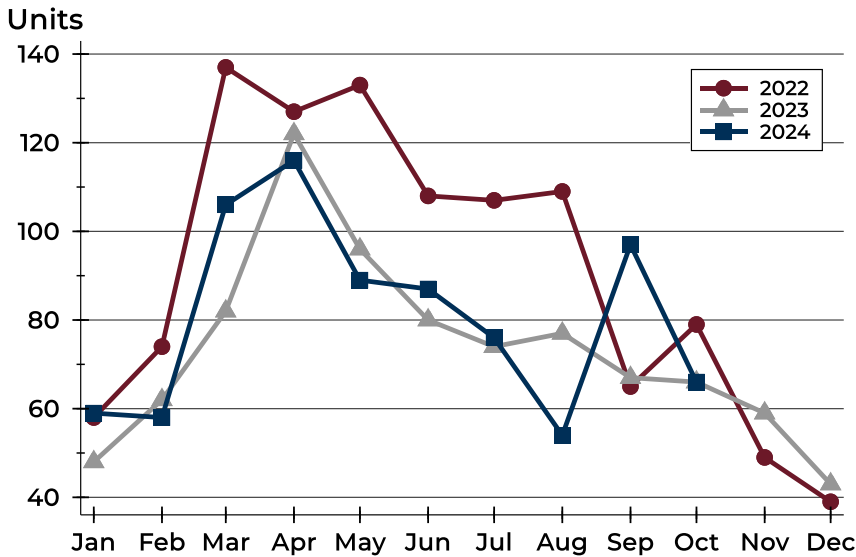
History of Contracts Written





City of Lawrence Contracts Written Analysis

Contracts Written by Month



Month	2022	2023	2024
January	58	48	59
February	74	62	58
March	137	82	106
April	127	122	116
May	133	96	89
June	108	80	87
July	107	74	76
August	109	77	54
September	65	67	97
October	79	66	66
November	49	59	
December	39	43	

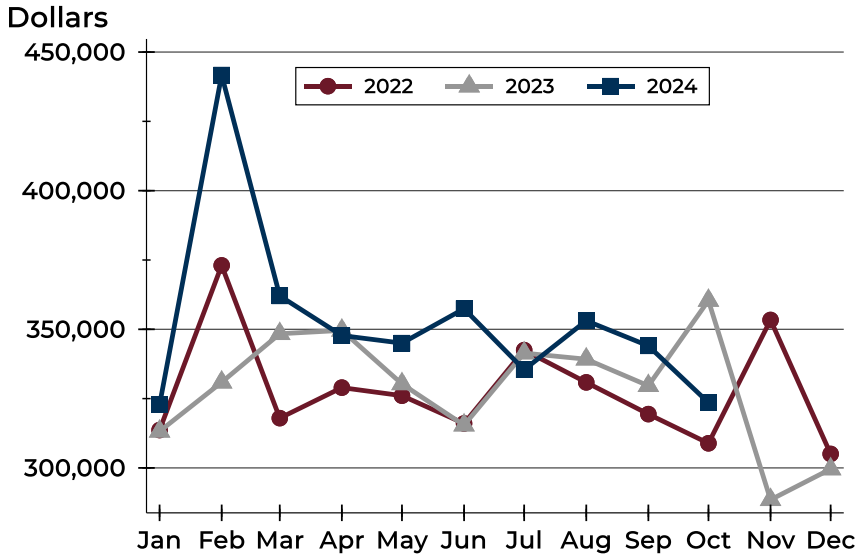
Contracts Written by Price Range

Price Range	Contracts Written		List Price		Days on Market		Price as % of Orig.	
	Number	Percent	Average	Median	Avg.	Med.	Avg.	Med.
Below \$50,000	0	0.0%	N/A	N/A	N/A	N/A	N/A	N/A
\$50,000-\$99,999	0	0.0%	N/A	N/A	N/A	N/A	N/A	N/A
\$100,000-\$149,999	4	6.1%	135,025	134,450	12	7	96.0%	99.9%
\$150,000-\$199,999	4	6.1%	164,700	159,500	29	18	97.6%	98.5%
\$200,000-\$249,999	13	19.7%	229,342	235,000	27	11	96.8%	95.6%
\$250,000-\$299,999	8	12.1%	281,163	278,750	23	5	98.6%	100.0%
\$300,000-\$349,999	15	22.7%	328,800	329,900	15	4	99.0%	100.0%
\$350,000-\$399,999	12	18.2%	382,975	381,500	24	6	98.1%	100.0%
\$400,000-\$449,999	3	4.5%	436,633	435,000	47	11	97.9%	100.0%
\$450,000-\$499,999	2	3.0%	476,950	476,950	3	3	100.0%	100.0%
\$500,000-\$599,999	3	4.5%	566,000	585,000	28	10	98.3%	100.0%
\$600,000-\$749,999	1	1.5%	650,000	650,000	84	84	100.0%	100.0%
\$750,000-\$999,999	1	1.5%	785,000	785,000	0	0	100.0%	100.0%
\$1,000,000 and up	0	0.0%	N/A	N/A	N/A	N/A	N/A	N/A



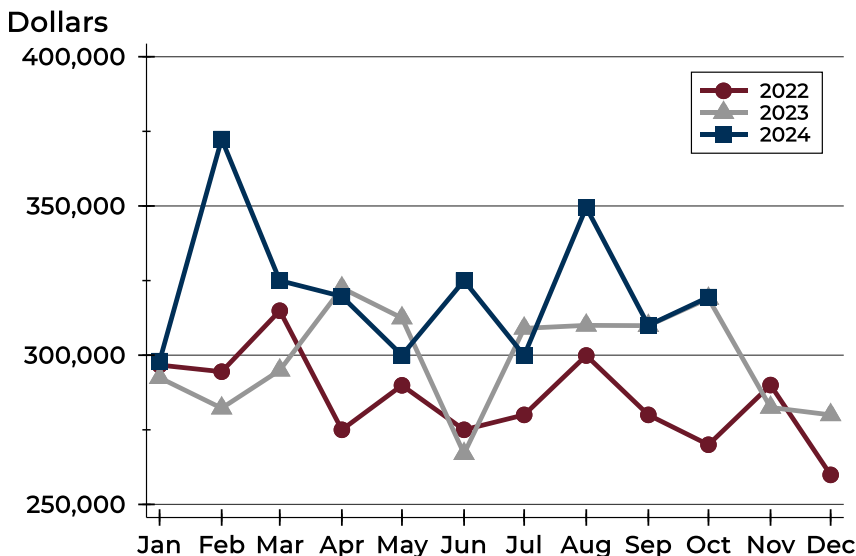
City of Lawrence Contracts Written Analysis

Average Price



Month	2022	2023	2024
January	313,674	313,207	322,803
February	373,052	330,911	441,710
March	317,961	348,394	362,046
April	328,966	349,615	347,752
May	326,059	330,296	345,003
June	316,044	315,423	357,422
July	342,488	341,411	335,414
August	330,861	339,212	353,100
September	319,416	329,643	344,033
October	308,888	360,391	323,548
November	353,371	288,514	
December	305,041	299,601	

Median Price

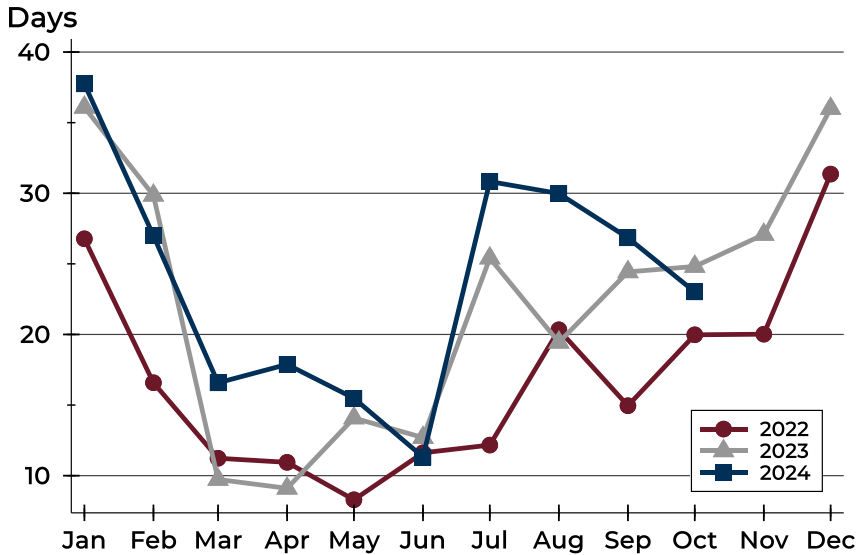


Month	2022	2023	2024
January	296,700	292,450	298,000
February	294,475	282,250	372,400
March	314,900	294,950	325,000
April	275,000	322,500	319,700
May	289,900	312,450	300,000
June	275,000	267,000	325,000
July	280,000	309,000	299,900
August	299,900	310,000	349,500
September	280,000	309,900	310,000
October	270,000	319,000	319,450
November	290,000	282,500	
December	259,900	280,000	



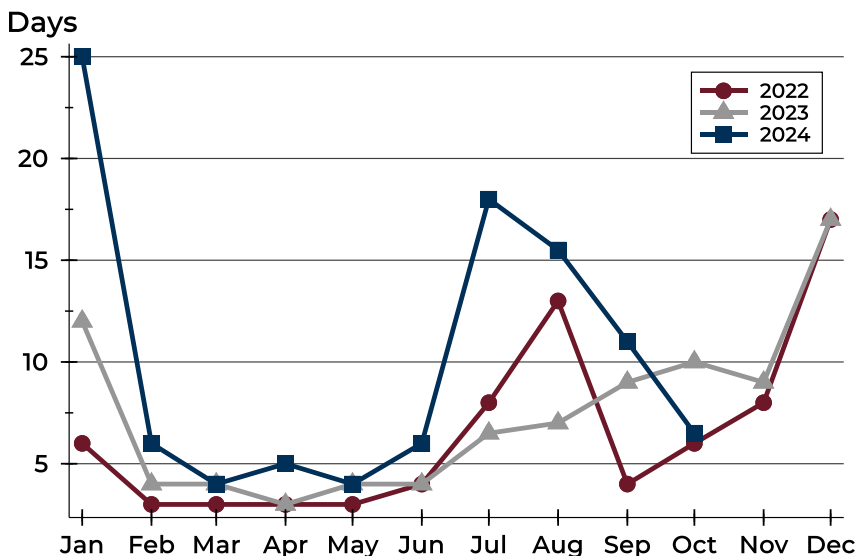
City of Lawrence Contracts Written Analysis

Average DOM



Month	2022	2023	2024
January	27	36	38
February	17	30	27
March	11	10	17
April	11	9	18
May	8	14	15
June	12	13	11
July	12	25	31
August	20	19	30
September	15	24	27
October	20	25	23
November	20	27	
December	31	36	

Median DOM



Month	2022	2023	2024
January	6	12	25
February	3	4	6
March	3	4	4
April	3	3	5
May	3	4	4
June	4	4	6
July	8	7	18
August	13	7	16
September	4	9	11
October	6	10	7
November	8	9	
December	17	17	



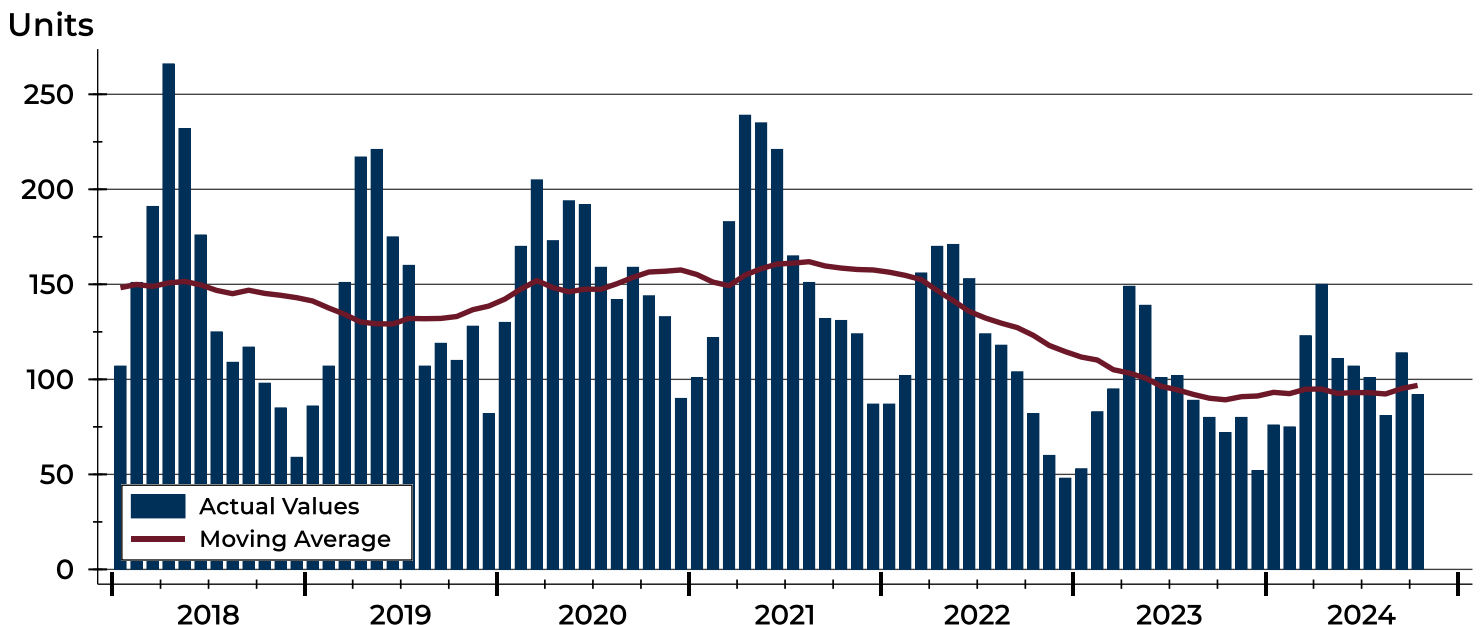
City of Lawrence Pending Contracts Analysis

Summary Statistics for Pending Contracts		End of October		
		2024	2023	Change
Pending Contracts		92	72	27.8%
Volume (1,000s)		31,354	26,329	19.1%
Average	List Price	340,800	365,678	-6.8%
	Days on Market	21	24	-12.5%
	Percent of Original	98.6%	99.0%	-0.4%
Median	List Price	319,900	322,500	-0.8%
	Days on Market	6	13	-53.8%
	Percent of Original	100.0%	100.0%	0.0%

A total of 92 listings in the City of Lawrence had contracts pending at the end of October, up from 72 contracts pending at the end of October 2023.

Pending contracts reflect listings with a contract in place at the end of the month. In contrast, contracts written measures the number of listings put under contract during the month.

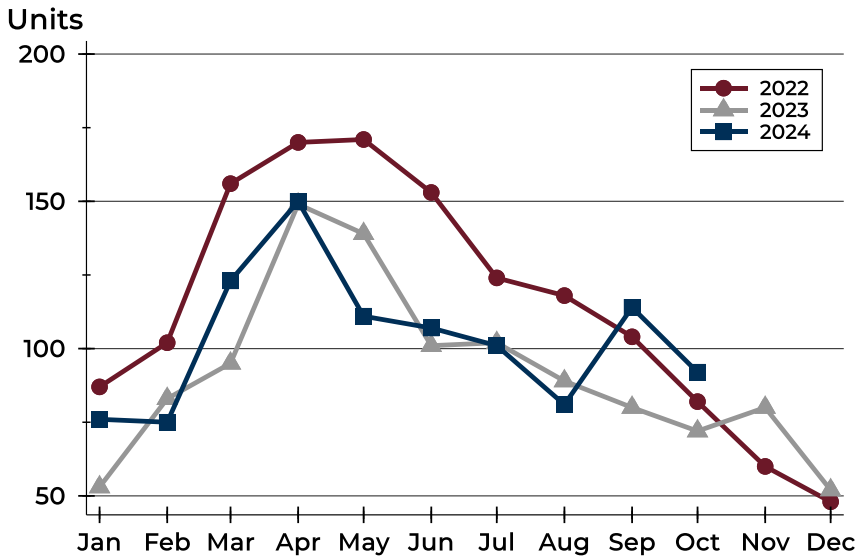
History of Pending Contracts





City of Lawrence Pending Contracts Analysis

Pending Contracts by Month



Month	2022	2023	2024
January	87	53	76
February	102	83	75
March	156	95	123
April	170	149	150
May	171	139	111
June	153	101	107
July	124	102	101
August	118	89	81
September	104	80	114
October	82	72	92
November	60	80	
December	48	52	

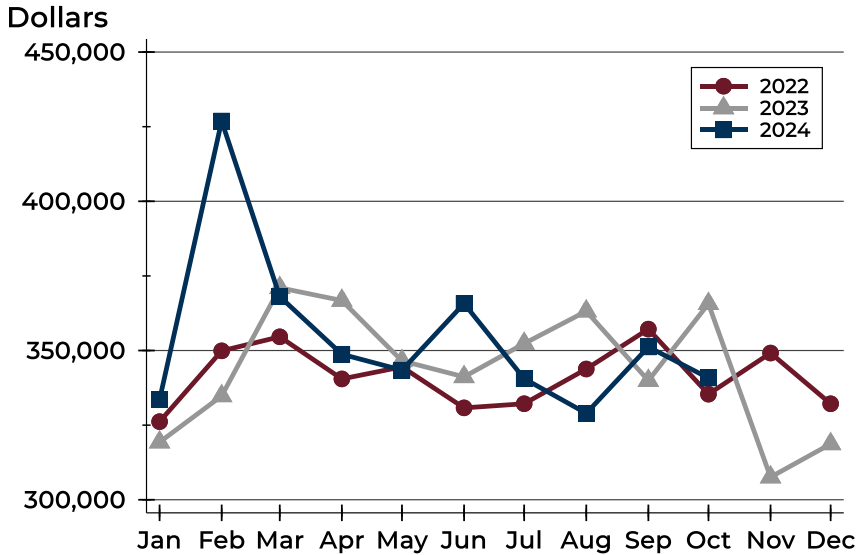
Pending Contracts by Price Range

Price Range	Pending Contracts		List Price		Days on Market		Price as % of Orig.	
	Number	Percent	Average	Median	Avg.	Med.	Avg.	Med.
Below \$50,000	0	0.0%	N/A	N/A	N/A	N/A	N/A	N/A
\$50,000-\$99,999	0	0.0%	N/A	N/A	N/A	N/A	N/A	N/A
\$100,000-\$149,999	6	6.5%	133,175	134,450	27	7	95.3%	100.0%
\$150,000-\$199,999	6	6.5%	168,950	164,950	32	18	98.6%	100.0%
\$200,000-\$249,999	17	18.5%	225,121	222,000	18	8	98.2%	100.0%
\$250,000-\$299,999	11	12.0%	282,450	282,000	19	8	99.0%	100.0%
\$300,000-\$349,999	17	18.5%	327,676	329,000	13	4	99.2%	100.0%
\$350,000-\$399,999	13	14.1%	380,815	378,000	25	6	99.1%	100.0%
\$400,000-\$449,999	5	5.4%	433,760	435,000	35	11	97.4%	100.0%
\$450,000-\$499,999	5	5.4%	472,160	475,000	1	1	100.0%	100.0%
\$500,000-\$599,999	6	6.5%	542,000	522,500	37	8	98.2%	100.0%
\$600,000-\$749,999	4	4.3%	671,725	679,500	37	32	100.0%	100.0%
\$750,000-\$999,999	2	2.2%	808,621	808,621	0	0	100.0%	100.0%
\$1,000,000 and up	0	0.0%	N/A	N/A	N/A	N/A	N/A	N/A



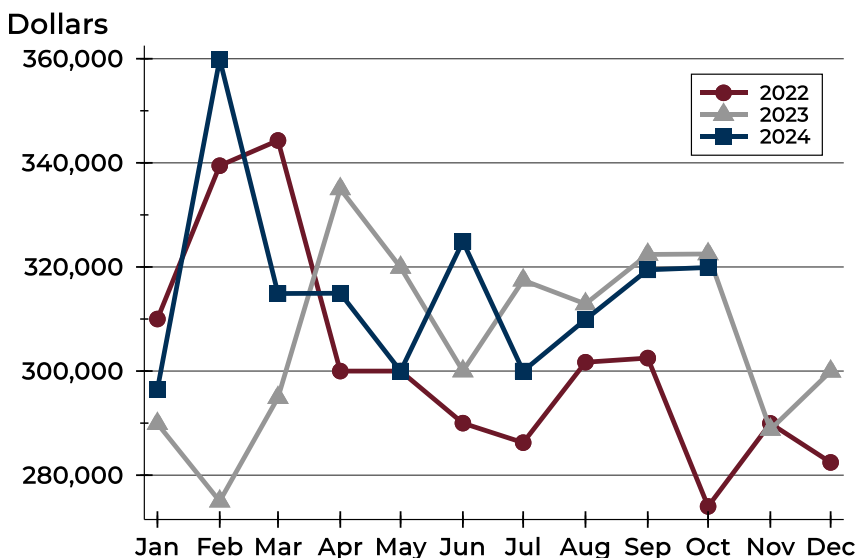
City of Lawrence Pending Contracts Analysis

Average Price



Month	2022	2023	2024
January	326,176	319,303	333,556
February	349,894	334,790	426,894
March	354,598	371,024	368,083
April	340,485	366,757	348,759
May	344,523	346,540	343,428
June	330,793	341,180	365,760
July	332,179	352,339	340,577
August	343,818	363,178	328,967
September	357,180	339,931	351,206
October	335,385	365,678	340,800
November	349,171	307,588	
December	332,166	318,710	

Median Price

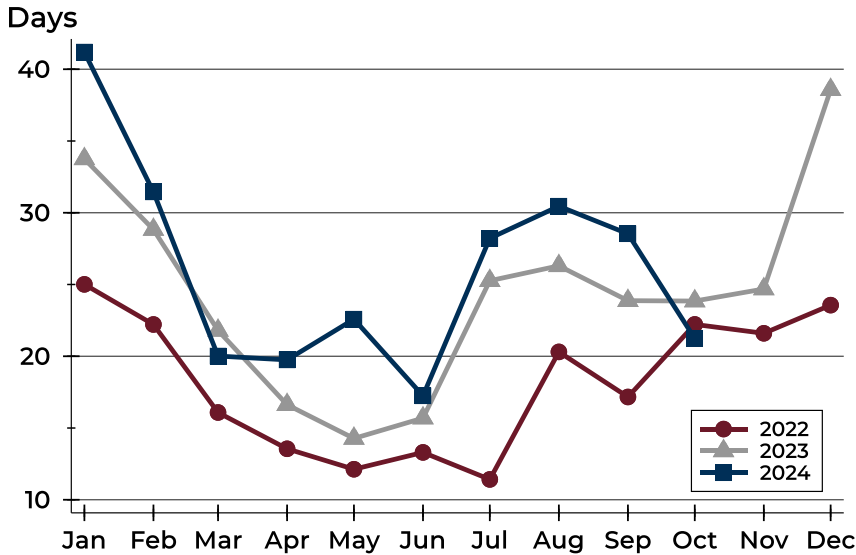


Month	2022	2023	2024
January	310,000	289,900	296,500
February	339,450	275,000	359,900
March	344,300	294,900	314,900
April	300,000	335,000	314,950
May	300,000	319,900	300,000
June	290,000	300,000	324,900
July	286,250	317,450	300,000
August	301,700	312,900	309,900
September	302,500	322,400	319,450
October	274,000	322,500	319,900
November	289,950	288,775	
December	282,450	299,950	



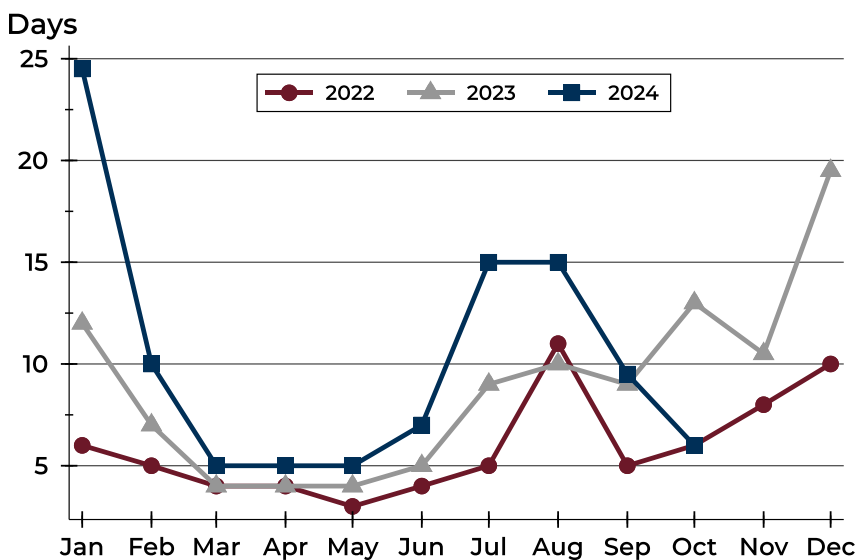
City of Lawrence Pending Contracts Analysis

Average DOM



Month	2022	2023	2024
January	25	34	41
February	22	29	31
March	16	22	20
April	14	17	20
May	12	14	23
June	13	16	17
July	11	25	28
August	20	26	30
September	17	24	29
October	22	24	21
November	22	25	
December	24	39	

Median DOM



Month	2022	2023	2024
January	6	12	25
February	5	7	10
March	4	4	5
April	4	4	5
May	3	4	5
June	4	5	7
July	5	9	15
August	11	10	15
September	5	9	10
October	6	13	6
November	8	11	
December	10	20	