



**May
2026**

Lawrence MLS Statistics



City of Lawrence Housing Report



Market Overview

City of Lawrence Home Sales Fell in May

Total home sales in the City of Lawrence fell last month to 110 units, compared to 144 units in May 2025. Total sales volume was \$39.5 million, down from a year earlier.

The median sale price in May was \$332,500, down from \$345,000 a year earlier. Homes that sold in May were typically on the market for 4 days and sold for 100.0% of their list prices.

City of Lawrence Active Listings Up at End of May

The total number of active listings in the City of Lawrence at the end of May was 165 units, up from 154 at the same point in 2025. This represents a 2.1 months' supply of homes available for sale. The median list price of homes on the market at the end of May was \$478,500.

During May, a total of 89 contracts were written down from 126 in May 2025. At the end of the month, there were 133 contracts still pending.

Report Contents

- Summary Statistics – Page 2
- Closed Listing Analysis – Page 3
- Active Listings Analysis – Page 7
- Months' Supply Analysis – Page 11
- New Listings Analysis – Page 12
- Contracts Written Analysis – Page 15
- Pending Contracts Analysis – Page 19

Contact Information

Rob Hulse, Executive Vice-President
 Lawrence Board of REALTORS®
 3838 W. 6th Street (at Monterey)
 Lawrence, KS 66049
 785-842-1843
Rob@LawrenceRealtor.com
www.LawrenceRealtor.com



**May
2026**

Lawrence MLS Statistics



City of Lawrence Summary Statistics

May MLS Statistics Three-year History		Current Month			Year-to-Date		
		2026	2025	2024	2026	2025	2024
Home Sales		110	144	129	362	427	391
Change from prior year		-23.6%	11.6%	5.7%	-15.2%	9.2%	13.0%
Active Listings		165	154	138	N/A	N/A	N/A
Change from prior year		7.1%	11.6%	39.4%			
Months' Supply		2.1	1.9	1.7	N/A	N/A	N/A
Change from prior year		10.5%	11.8%	54.5%			
New Listings		116	159	127	560	618	551
Change from prior year		-27.0%	25.2%	11.4%	-9.4%	12.2%	10.4%
Contracts Written		89	126	94	451	510	455
Change from prior year		-29.4%	34.0%	-5.1%	-11.6%	12.1%	6.8%
Pending Contracts		133	145	111	N/A	N/A	N/A
Change from prior year		-8.3%	30.6%	-20.1%			
Sales Volume (1,000s)		39,505	58,992	46,033	130,479	158,884	138,916
Change from prior year		-33.0%	28.2%	2.7%	-17.9%	14.4%	18.6%
Average	Sale Price	359,141	409,665	356,843	360,440	372,093	355,285
	Change from prior year	-12.3%	14.8%	-2.9%	-3.1%	4.7%	4.9%
	List Price of Actives	502,211	459,766	358,466	N/A	N/A	N/A
	Change from prior year	9.2%	28.3%	-7.3%			
	Days on Market	16	18	13	24	30	22
Change from prior year	-11.1%	38.5%	30.0%	-20.0%	36.4%	22.2%	
Percent of List	99.6%	100.5%	100.3%	99.3%	99.8%	99.5%	
Change from prior year	-0.9%	0.2%	-1.9%	-0.5%	0.3%	-1.3%	
Percent of Original	99.1%	99.9%	99.9%	98.6%	99.1%	99.1%	
Change from prior year	-0.8%	0.0%	-2.1%	-0.5%	0.0%	-1.4%	
Median	Sale Price	332,500	345,000	322,000	325,000	325,000	315,000
	Change from prior year	-3.6%	7.1%	-5.4%	0.0%	3.2%	5.0%
	List Price of Actives	478,500	365,000	340,000	N/A	N/A	N/A
	Change from prior year	31.1%	7.4%	-13.9%			
	Days on Market	4	4	4	7	6	6
Change from prior year	0.0%	0.0%	33.3%	16.7%	0.0%	50.0%	
Percent of List	100.0%	100.0%	100.0%	100.0%	100.0%	100.0%	
Change from prior year	0.0%	0.0%	-0.3%	0.0%	0.0%	0.0%	
Percent of Original	100.0%	100.0%	100.0%	100.0%	100.0%	100.0%	
Change from prior year	0.0%	0.0%	-0.3%	0.0%	0.0%	0.0%	

Note: Year-to-date statistics cannot be calculated for Active Listings, Months' Supply and Pending Contracts.



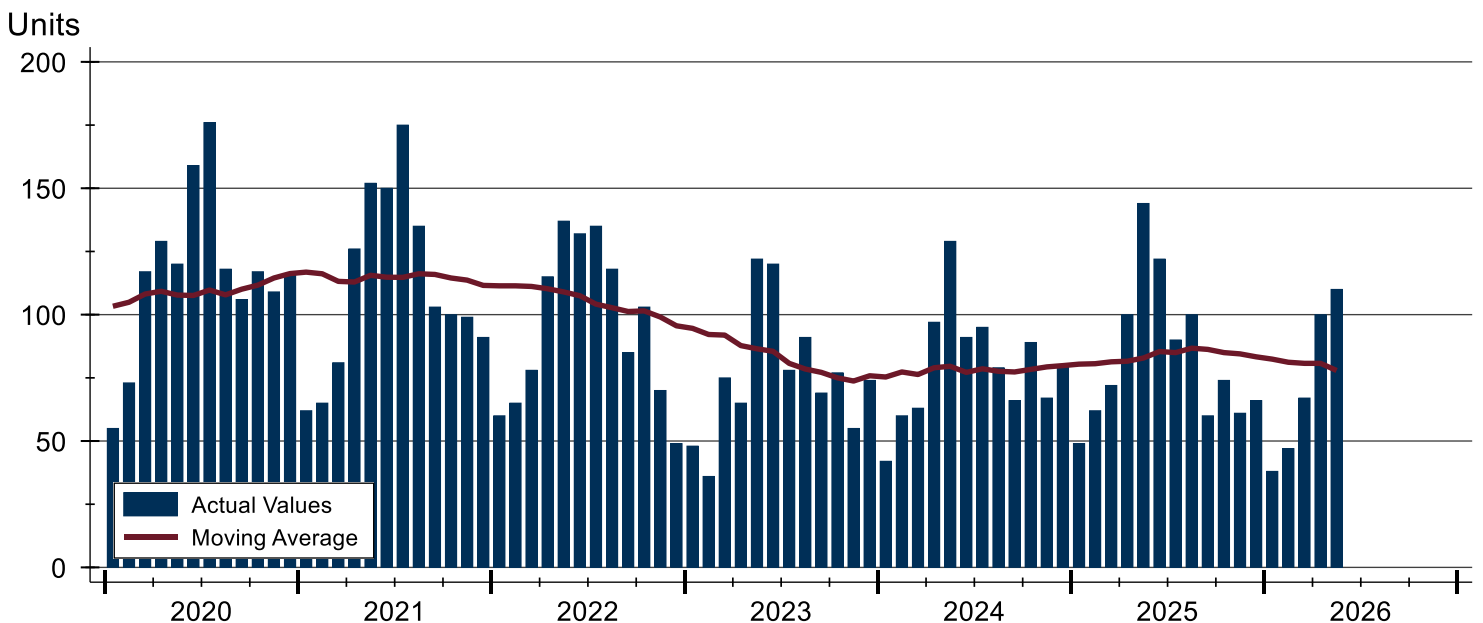
City of Lawrence Closed Listings Analysis

Summary Statistics for Closed Listings		2026	May 2025	Change	2026	Year-to-Date 2025	Change
Closed Listings		110	144	-23.6%	362	427	-15.2%
Volume (1,000s)		39,505	58,992	-33.0%	130,479	158,884	-17.9%
Months' Supply		2.1	1.9	10.5%	N/A	N/A	N/A
Average	Sale Price	359,141	409,665	-12.3%	360,440	372,093	-3.1%
	Days on Market	16	18	-11.1%	24	30	-20.0%
	Percent of List	99.6%	100.5%	-0.9%	99.3%	99.8%	-0.5%
	Percent of Original	99.1%	99.9%	-0.8%	98.6%	99.1%	-0.5%
Median	Sale Price	332,500	345,000	-3.6%	325,000	325,000	0.0%
	Days on Market	4	4	0.0%	7	6	16.7%
	Percent of List	100.0%	100.0%	0.0%	100.0%	100.0%	0.0%
	Percent of Original	100.0%	100.0%	0.0%	100.0%	100.0%	0.0%

A total of 110 homes sold in the City of Lawrence in May, down from 144 units in May 2025. Total sales volume fell to \$39.5 million compared to \$59.0 million in the previous year.

The median sales price in May was \$332,500, down 3.6% compared to the prior year. Median days on market was 4 days, down from 5 days in April, but similar to May 2025.

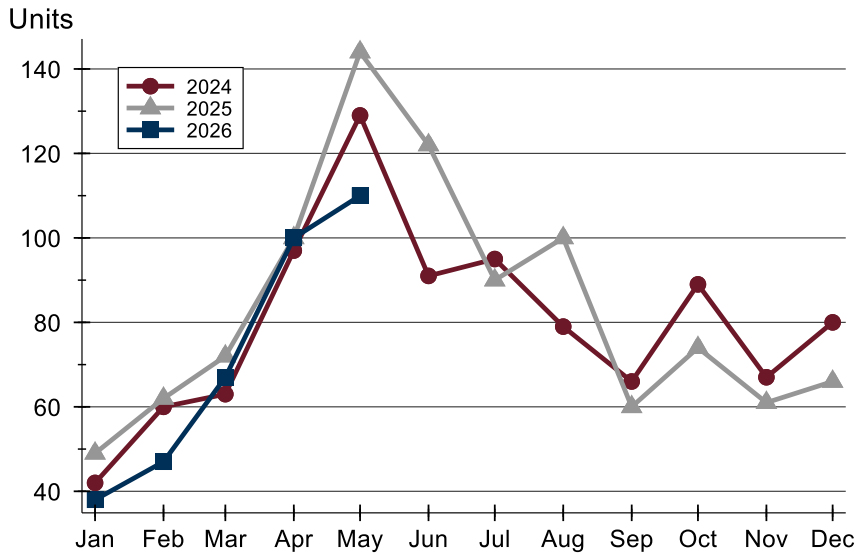
History of Closed Listings





City of Lawrence Closed Listings Analysis

Closed Listings by Month



Month	2024	2025	2026
January	42	49	38
February	60	62	47
March	63	72	67
April	97	100	100
May	129	144	110
June	91	122	
July	95	90	
August	79	100	
September	66	60	
October	89	74	
November	67	61	
December	80	66	

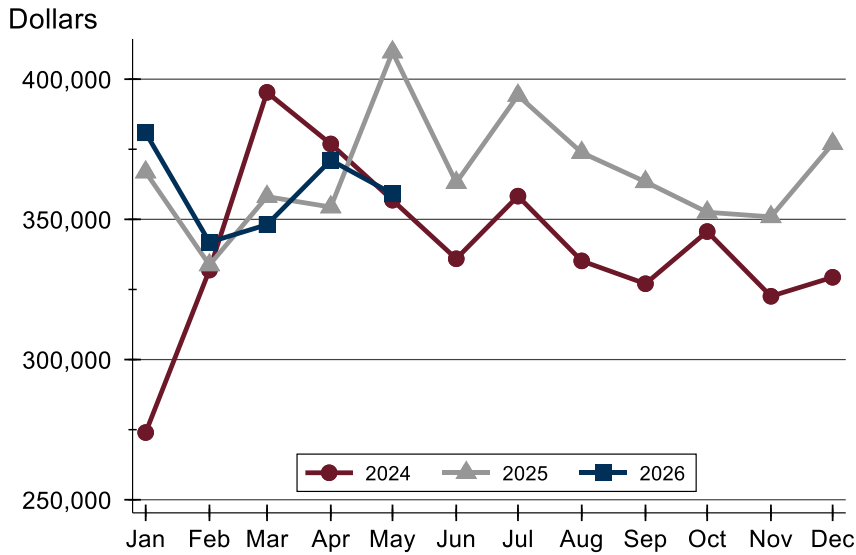
Closed Listings by Price Range

Price Range	Sales		Months' Supply	Sale Price		Days on Market		Price as % of List		Price as % of Orig.	
	Number	Percent		Average	Median	Avg.	Med.	Avg.	Med.	Avg.	Med.
Below \$50,000	0	0.0%	N/A	N/A	N/A	N/A	N/A	N/A	N/A	N/A	N/A
\$50,000-\$99,999	1	0.9%	9.6	86,000	86,000	58	58	90.6%	90.6%	90.6%	90.6%
\$100,000-\$149,999	0	0.0%	3.4	N/A	N/A	N/A	N/A	N/A	N/A	N/A	N/A
\$150,000-\$199,999	7	6.4%	0.7	177,000	170,000	28	6	94.5%	96.7%	92.7%	93.9%
\$200,000-\$249,999	13	11.8%	1.1	220,439	219,000	13	3	99.2%	100.0%	98.8%	100.0%
\$250,000-\$299,999	25	22.7%	0.9	269,399	268,000	9	4	101.4%	100.4%	101.1%	100.4%
\$300,000-\$349,999	18	16.4%	1.6	329,573	332,500	8	5	100.9%	100.0%	100.9%	100.0%
\$350,000-\$399,999	13	11.8%	1.3	377,800	371,000	8	4	101.1%	100.0%	100.9%	100.0%
\$400,000-\$449,999	12	10.9%	0.6	417,317	412,950	12	6	100.2%	100.0%	100.2%	100.0%
\$450,000-\$499,999	11	10.0%	4.1	474,118	480,000	7	2	99.5%	100.0%	98.9%	100.0%
\$500,000-\$599,999	3	2.7%	3.0	557,667	549,500	85	124	98.8%	98.5%	93.5%	94.4%
\$600,000-\$749,999	5	4.5%	7.4	671,000	665,000	59	40	94.7%	100.0%	93.5%	100.0%
\$750,000-\$999,999	0	0.0%	N/A	N/A	N/A	N/A	N/A	N/A	N/A	N/A	N/A
\$1,000,000 and up	2	1.8%	9.0	1,242,500	1,242,500	12	12	93.5%	93.5%	93.5%	93.5%



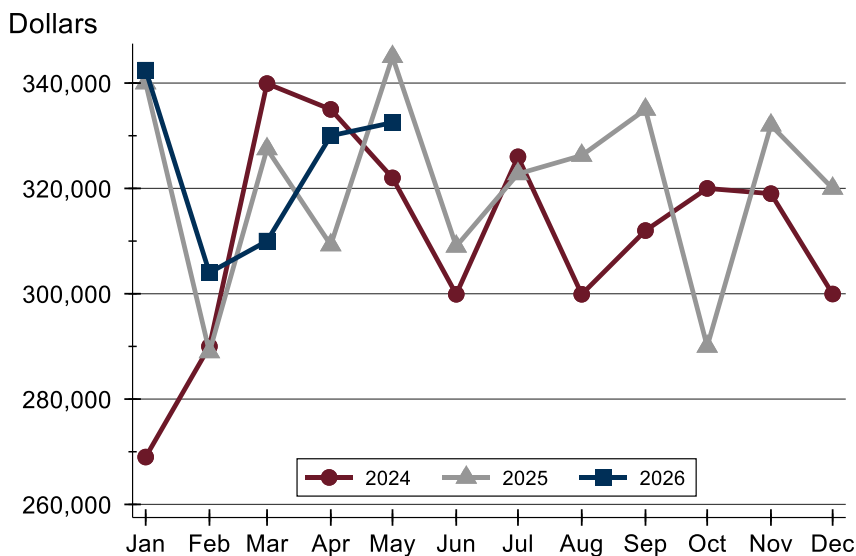
City of Lawrence Closed Listings Analysis

Average Price



Month	2024	2025	2026
January	273,973	366,863	380,868
February	331,921	333,742	341,848
March	395,294	358,114	348,115
April	376,885	354,396	371,104
May	356,843	409,665	359,141
June	335,946	363,112	
July	358,291	394,198	
August	335,185	373,798	
September	327,043	363,390	
October	345,662	352,531	
November	322,575	350,902	
December	329,339	376,963	

Median Price

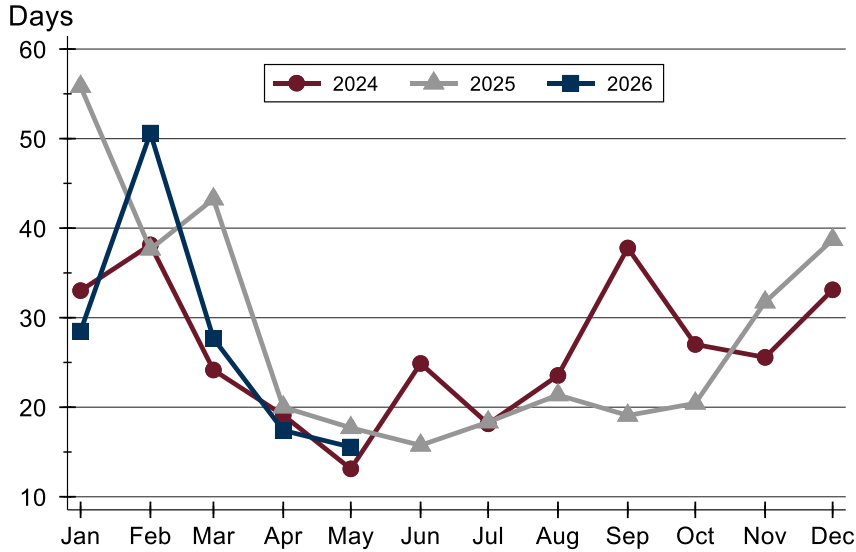


Month	2024	2025	2026
January	269,000	340,000	342,450
February	290,000	288,950	304,000
March	339,900	327,500	310,000
April	335,000	309,253	330,000
May	322,000	345,000	332,500
June	299,900	309,000	
July	326,000	322,750	
August	299,900	326,250	
September	312,000	335,000	
October	320,000	289,999	
November	319,000	332,000	
December	299,950	320,000	



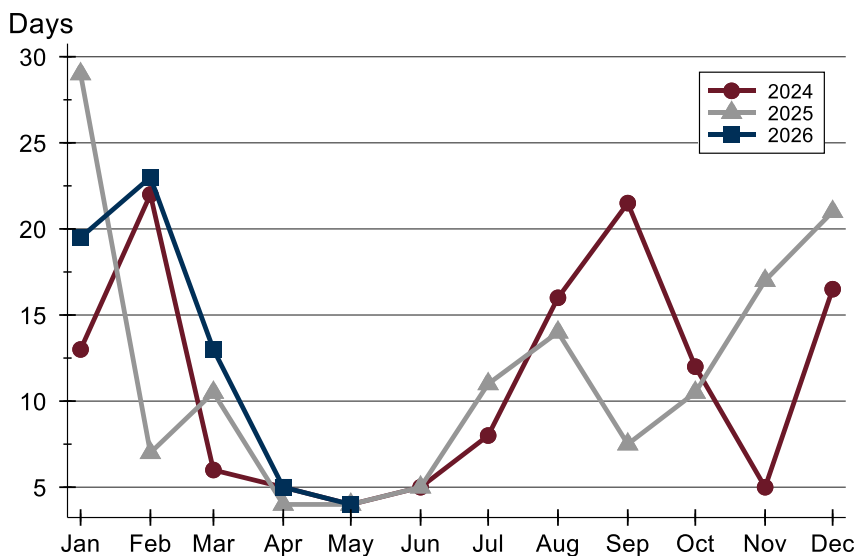
City of Lawrence Closed Listings Analysis

Average DOM



Month	2024	2025	2026
January	33	56	29
February	38	38	51
March	24	43	28
April	19	20	17
May	13	18	16
June	25	16	
July	18	18	
August	24	21	
September	38	19	
October	27	20	
November	26	32	
December	33	39	

Median DOM



Month	2024	2025	2026
January	13	29	20
February	22	7	23
March	6	11	13
April	5	4	5
May	4	4	4
June	5	5	
July	8	11	
August	16	14	
September	22	8	
October	12	11	
November	5	17	
December	17	21	



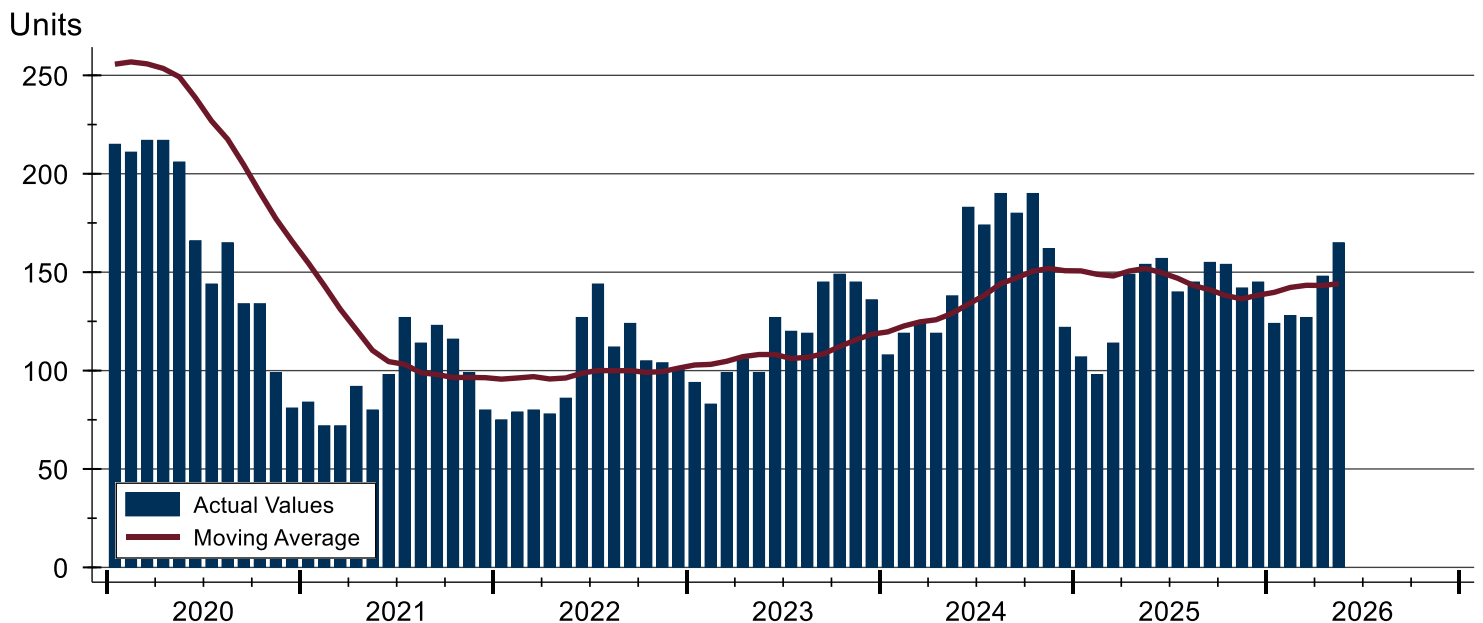
City of Lawrence Active Listings Analysis

Summary Statistics for Active Listings		2026	End of May 2025	Change
Active Listings		165	154	7.1%
Volume (1,000s)		82,865	70,804	17.0%
Months' Supply		2.1	1.9	10.5%
Average	List Price	502,211	459,766	9.2%
	Days on Market	50	37	35.1%
	Percent of Original	98.1%	98.2%	-0.1%
Median	List Price	478,500	365,000	31.1%
	Days on Market	24	13	84.6%
	Percent of Original	100.0%	100.0%	0.0%

A total of 165 homes were available for sale in the City of Lawrence at the end of May. This represents a 2.1 months' supply of active listings.

The median list price of homes on the market at the end of May was \$478,500, up 31.1% from 2025. The typical time on market for active listings was 24 days, up from 12 days a year earlier.

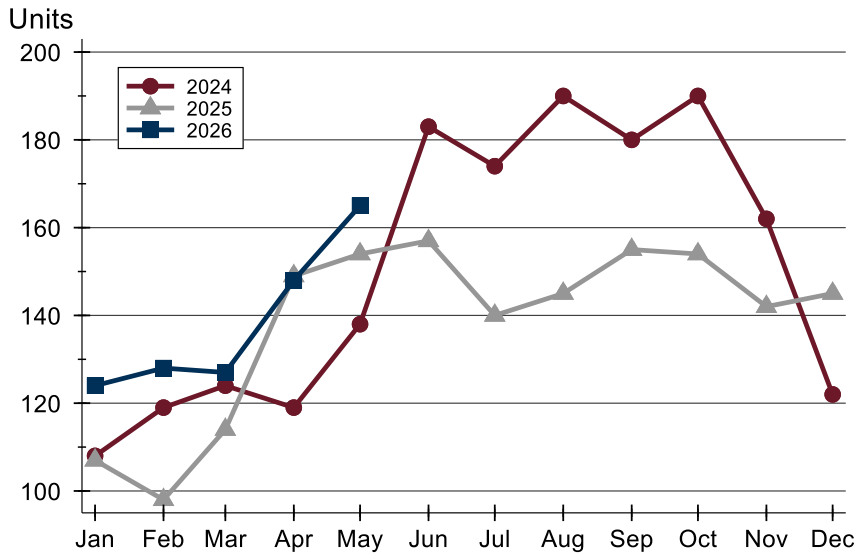
History of Active Listings





City of Lawrence Active Listings Analysis

Active Listings by Month



Month	2024	2025	2026
January	108	107	124
February	119	98	128
March	124	114	127
April	119	149	148
May	138	154	165
June	183	157	
July	174	140	
August	190	145	
September	180	155	
October	190	154	
November	162	142	
December	122	145	

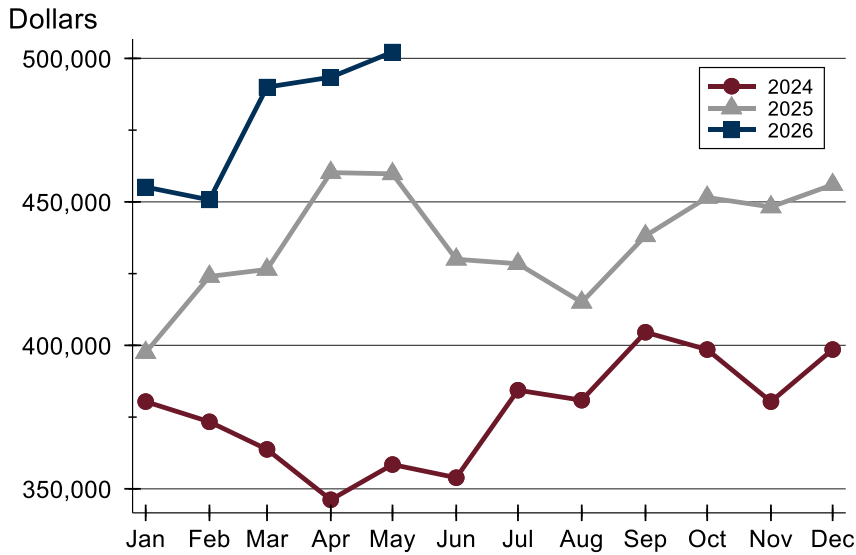
Active Listings by Price Range

Price Range	Active Listings Number	Active Listings Percent	Months' Supply	List Price Average	List Price Median	Days on Market Avg.	Days on Market Med.	Price as % of Orig. Avg.	Price as % of Orig. Med.
Below \$50,000	0	0.0%	N/A	N/A	N/A	N/A	N/A	N/A	N/A
\$50,000-\$99,999	4	2.4%	9.6	84,905	86,725	60	46	92.8%	99.1%
\$100,000-\$149,999	7	4.2%	3.4	132,229	134,000	40	21	95.4%	100.0%
\$150,000-\$199,999	3	1.8%	0.7	160,267	159,900	62	58	93.1%	91.3%
\$200,000-\$249,999	10	6.1%	1.1	231,420	233,500	31	18	98.4%	100.0%
\$250,000-\$299,999	15	9.1%	0.9	275,887	274,900	30	14	98.0%	100.0%
\$300,000-\$349,999	21	12.7%	1.6	318,643	319,000	19	17	98.1%	100.0%
\$350,000-\$399,999	11	6.7%	1.3	386,941	387,750	28	27	97.9%	100.0%
\$400,000-\$449,999	4	2.4%	0.6	432,700	437,450	17	15	97.9%	98.9%
\$450,000-\$499,999	19	11.5%	4.1	479,884	479,900	28	18	99.0%	100.0%
\$500,000-\$599,999	17	10.3%	3.0	554,065	540,000	43	16	98.4%	100.0%
\$600,000-\$749,999	31	18.8%	7.4	651,006	649,000	109	143	99.1%	100.0%
\$750,000-\$999,999	14	8.5%	N/A	827,836	817,450	28	17	98.9%	100.0%
\$1,000,000 and up	9	5.5%	9.0	1,297,767	1,270,000	115	6	97.8%	100.0%



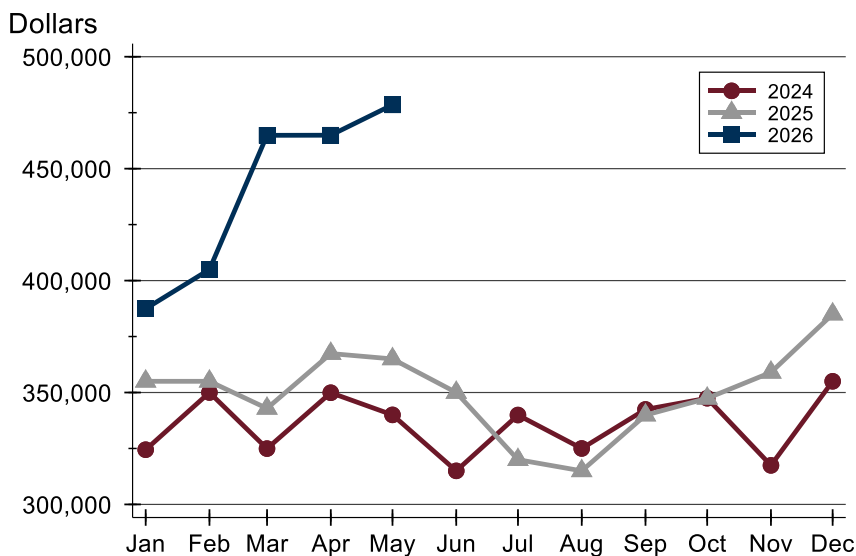
City of Lawrence Active Listings Analysis

Average Price



Month	2024	2025	2026
January	380,405	397,492	455,173
February	373,361	423,998	450,701
March	363,744	426,466	489,997
April	346,189	460,216	493,441
May	358,466	459,766	502,211
June	353,875	430,003	
July	384,366	428,439	
August	380,883	415,012	
September	404,570	438,170	
October	398,530	451,550	
November	380,374	448,229	
December	398,546	455,985	

Median Price

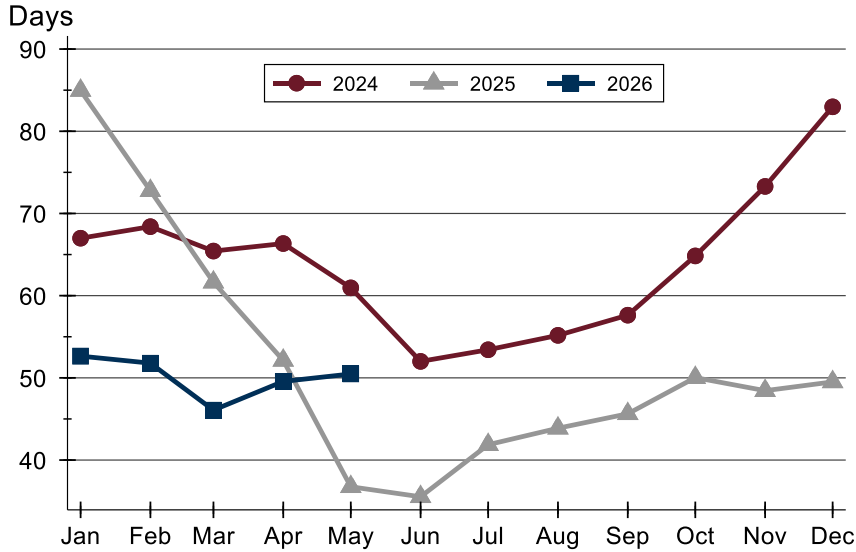


Month	2024	2025	2026
January	324,450	355,000	387,450
February	350,000	355,000	404,950
March	324,950	342,900	464,900
April	349,900	367,400	464,950
May	340,000	365,000	478,500
June	315,000	350,000	
July	339,950	320,000	
August	325,000	315,000	
September	342,450	339,900	
October	347,450	347,400	
November	317,450	359,000	
December	355,000	385,000	



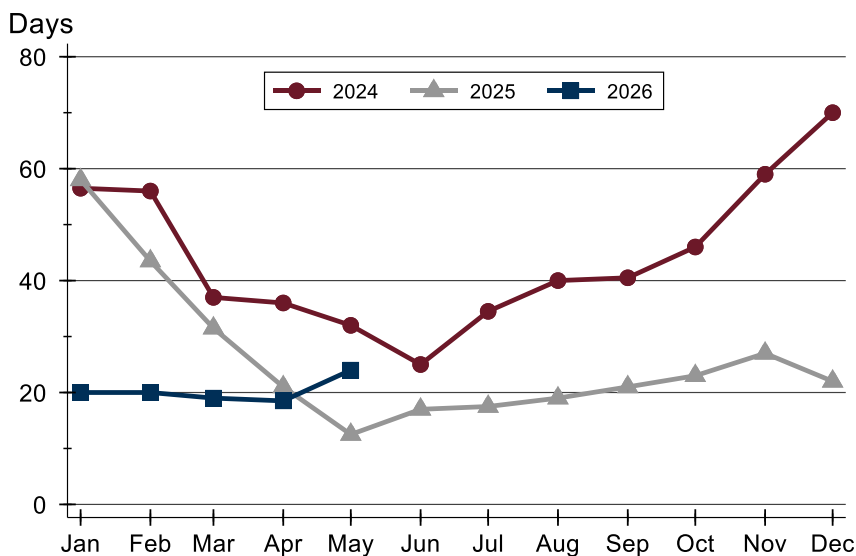
City of Lawrence Active Listings Analysis

Average DOM



Month	2024	2025	2026
January	67	85	53
February	68	73	52
March	65	62	46
April	66	52	50
May	61	37	50
June	52	36	
July	53	42	
August	55	44	
September	58	46	
October	65	50	
November	73	48	
December	83	50	

Median DOM

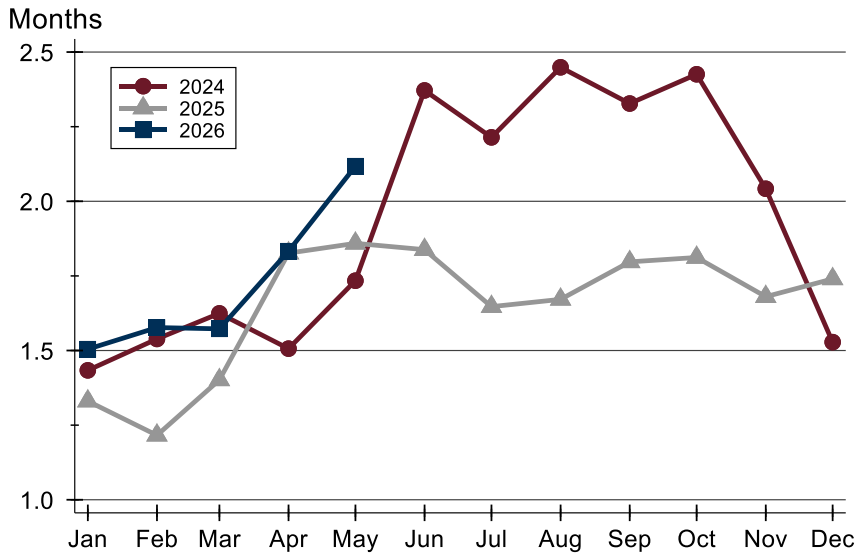


Month	2024	2025	2026
January	57	58	20
February	56	44	20
March	37	32	19
April	36	21	19
May	32	13	24
June	25	17	
July	35	18	
August	40	19	
September	41	21	
October	46	23	
November	59	27	
December	70	22	



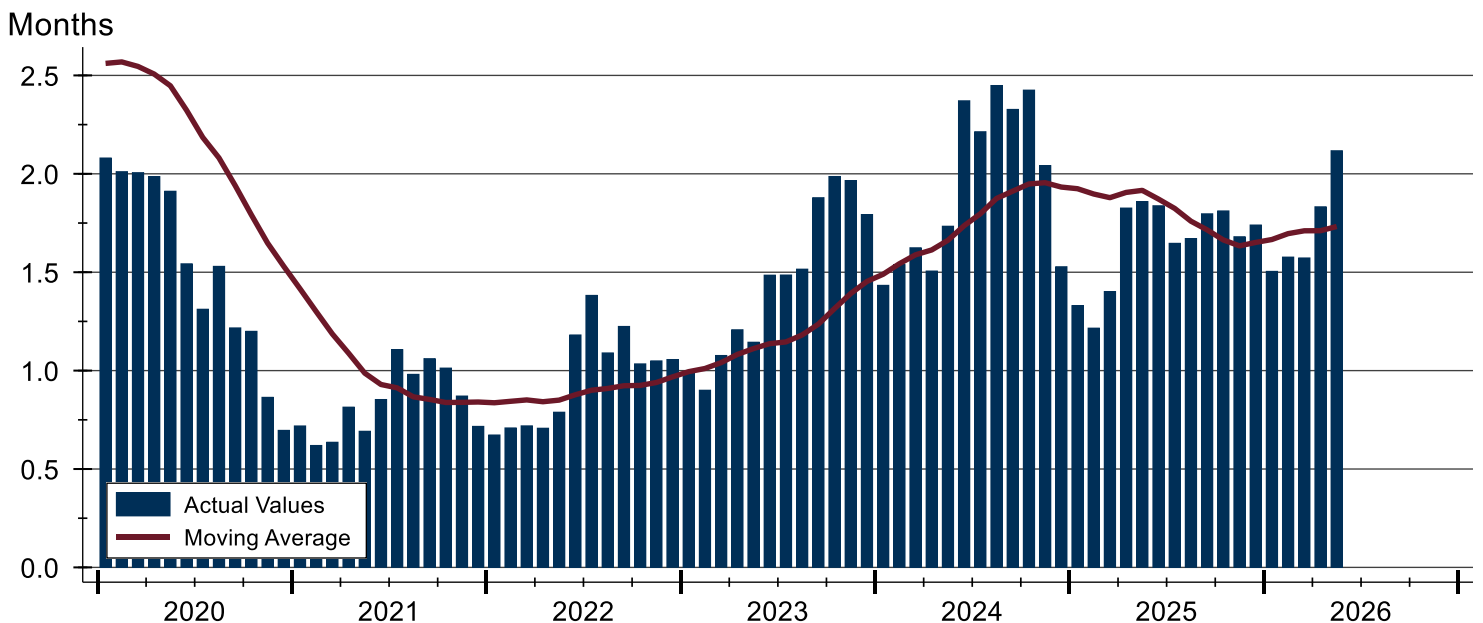
City of Lawrence Months' Supply Analysis

Months' Supply by Month



Month	2024	2025	2026
January	1.4	1.3	1.5
February	1.5	1.2	1.6
March	1.6	1.4	1.6
April	1.5	1.8	1.8
May	1.7	1.9	2.1
June	2.4	1.8	
July	2.2	1.6	
August	2.4	1.7	
September	2.3	1.8	
October	2.4	1.8	
November	2.0	1.7	
December	1.5	1.7	

History of Month's Supply





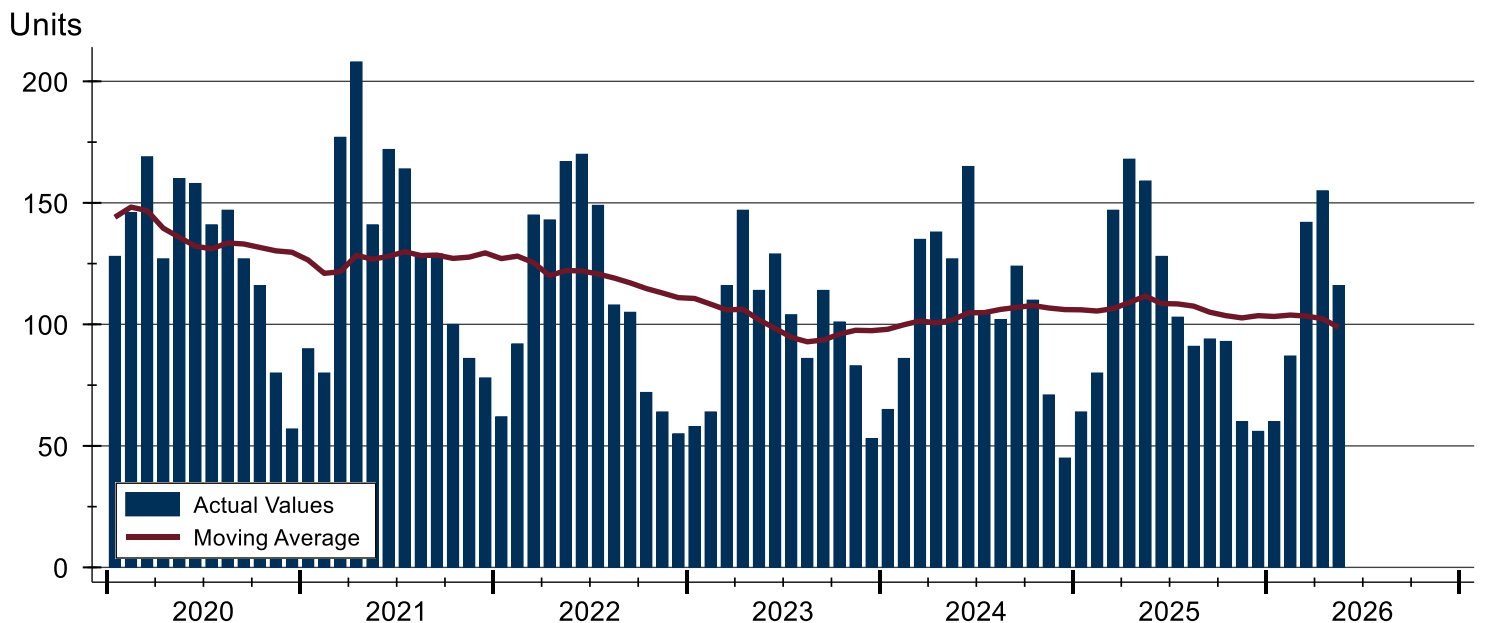
City of Lawrence New Listings Analysis

Summary Statistics for New Listings		2026	May 2025	Change
Current Month	New Listings	116	159	-27.0%
	Volume (1,000s)	51,733	57,260	-9.7%
	Average List Price	445,970	360,126	23.8%
	Median List Price	394,450	310,000	27.2%
Year-to-Date	New Listings	560	618	-9.4%
	Volume (1,000s)	231,375	239,335	-3.3%
	Average List Price	413,170	387,273	6.7%
	Median List Price	349,900	324,900	7.7%

A total of 116 new listings were added in the City of Lawrence during May, down 27.0% from the same month in 2025. Year-to-date the City of Lawrence has seen 560 new listings.

The median list price of these homes was \$394,450 up from \$310,000 in 2025.

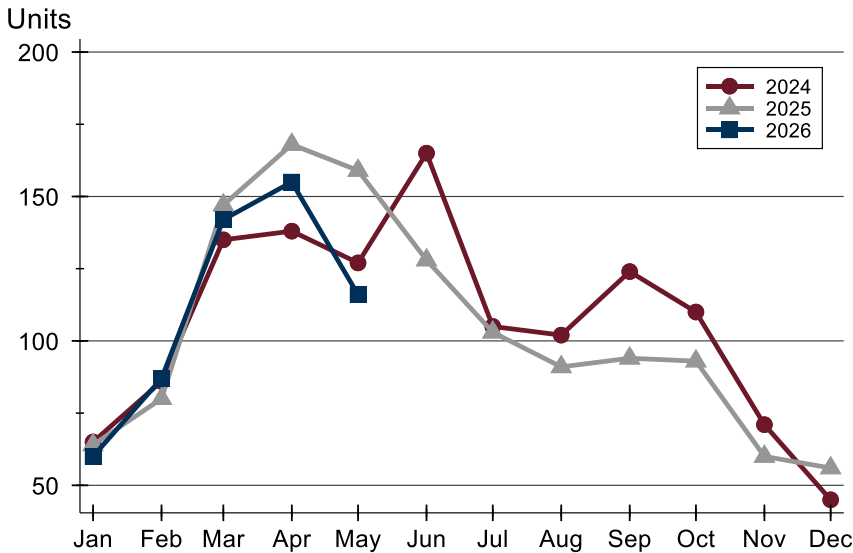
History of New Listings





City of Lawrence New Listings Analysis

New Listings by Month



Month	2024	2025	2026
January	65	64	60
February	86	80	87
March	135	147	142
April	138	168	155
May	127	159	116
June	165	128	
July	105	103	
August	102	91	
September	124	94	
October	110	93	
November	71	60	
December	45	56	

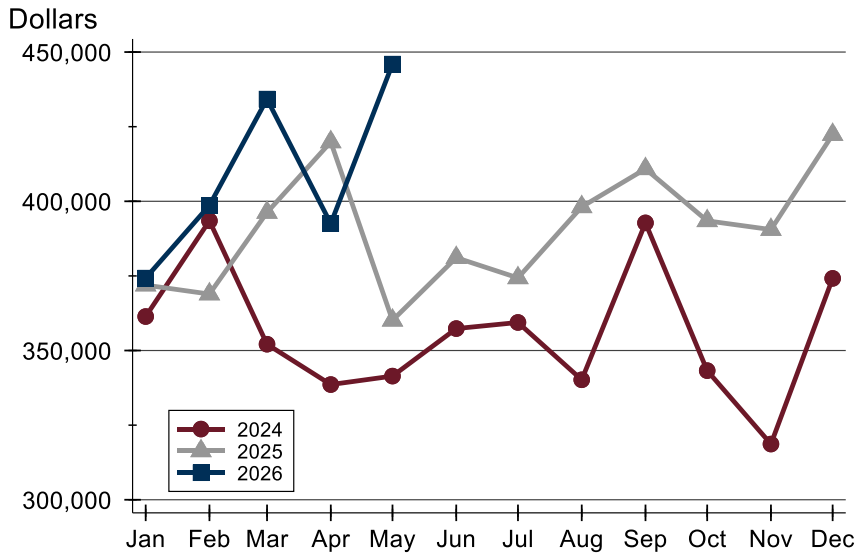
New Listings by Price Range

Price Range	New Listings		List Price		Days on Market		Price as % of Orig.	
	Number	Percent	Average	Median	Avg.	Med.	Avg.	Med.
Below \$50,000	0	0.0%	N/A	N/A	N/A	N/A	N/A	N/A
\$50,000-\$99,999	0	0.0%	N/A	N/A	N/A	N/A	N/A	N/A
\$100,000-\$149,999	1	0.9%	120,000	120,000	7	7	100.0%	100.0%
\$150,000-\$199,999	1	0.9%	198,000	198,000	22	22	94.3%	94.3%
\$200,000-\$249,999	13	11.2%	227,792	225,000	10	6	98.8%	100.0%
\$250,000-\$299,999	16	13.8%	268,456	267,450	7	5	99.9%	100.0%
\$300,000-\$349,999	18	15.5%	325,081	324,950	12	7	99.5%	100.0%
\$350,000-\$399,999	11	9.5%	374,109	375,000	6	5	99.8%	100.0%
\$400,000-\$449,999	6	5.2%	421,425	417,450	12	11	99.0%	100.0%
\$450,000-\$499,999	17	14.7%	477,861	479,900	8	5	99.8%	100.0%
\$500,000-\$599,999	13	11.2%	560,238	549,900	8	6	100.0%	100.0%
\$600,000-\$749,999	6	5.2%	665,900	669,000	12	12	99.5%	100.0%
\$750,000-\$999,999	12	10.3%	831,725	826,500	8	7	100.1%	100.0%
\$1,000,000 and up	2	1.7%	1,139,950	1,139,950	6	6	100.0%	100.0%



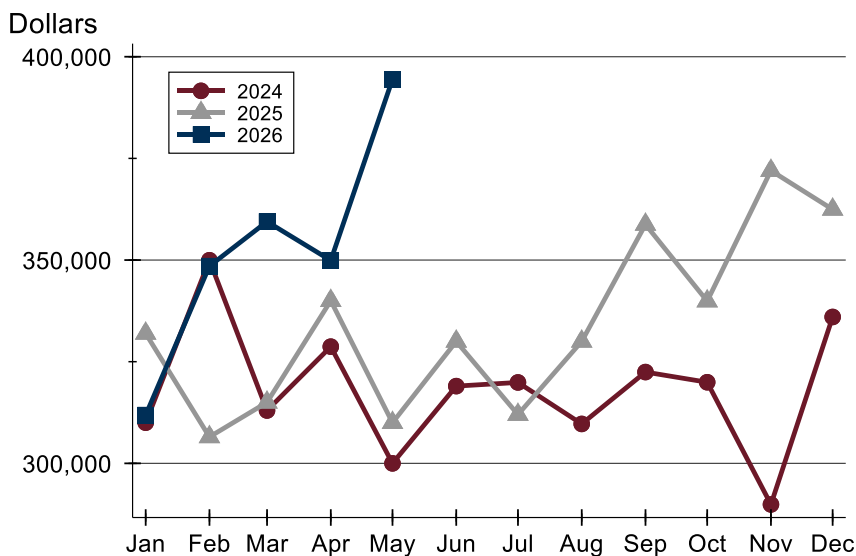
City of Lawrence New Listings Analysis

Average Price



Month	2024	2025	2026
January	361,397	371,917	374,272
February	393,460	368,919	398,631
March	352,127	396,268	434,249
April	338,599	419,880	392,531
May	341,437	360,126	445,970
June	357,359	381,115	
July	359,406	374,334	
August	340,199	398,141	
September	392,773	410,878	
October	343,271	393,451	
November	318,672	390,525	
December	374,167	422,349	

Median Price



Month	2024	2025	2026
January	310,000	331,950	311,875
February	349,950	306,500	348,500
March	313,000	315,000	359,450
April	328,700	340,000	349,900
May	299,999	310,000	394,450
June	319,000	330,000	
July	319,900	312,000	
August	309,700	330,000	
September	322,450	358,750	
October	319,950	339,900	
November	289,900	372,000	
December	336,000	362,450	

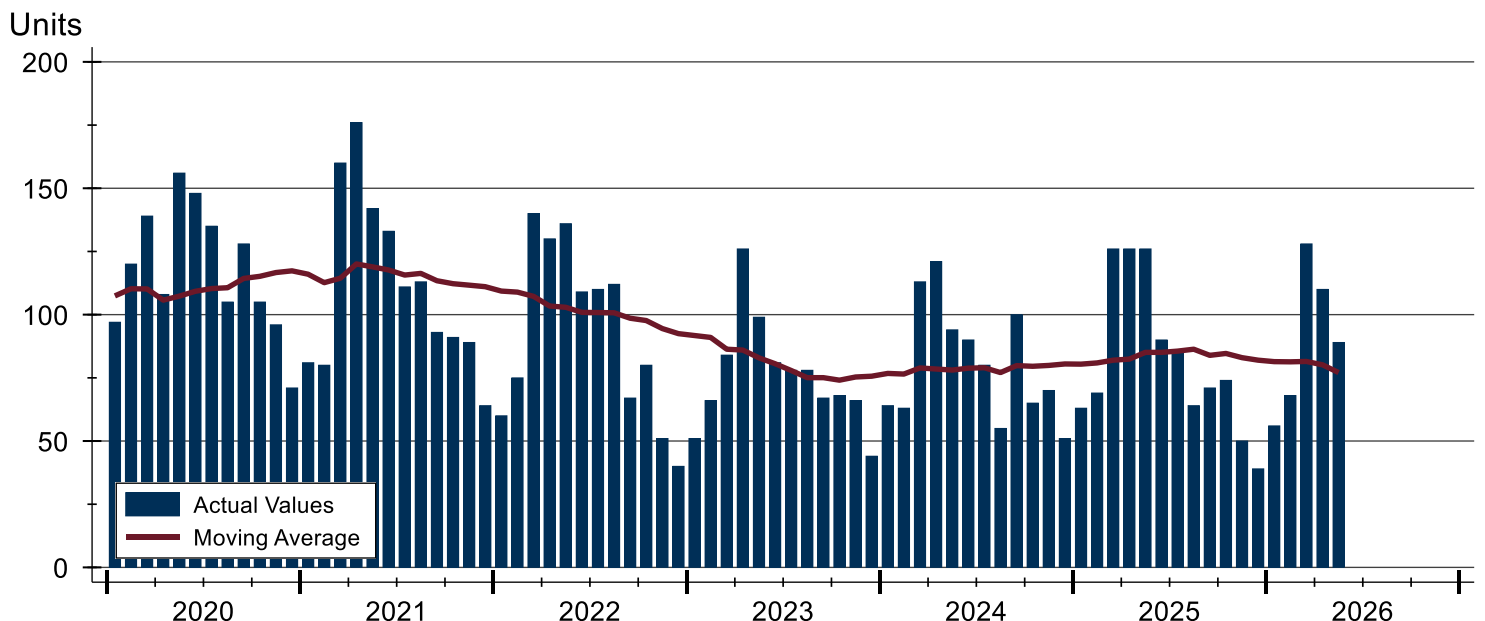


City of Lawrence Contracts Written Analysis

Summary Statistics for Contracts Written		2026	May 2025	Change	2026	Year-to-Date 2025	Change
Contracts Written		89	126	-29.4%	451	510	-11.6%
Volume (1,000s)		36,105	45,575	-20.8%	170,859	190,193	-10.2%
Average	Sale Price	405,678	361,708	12.2%	378,844	372,928	1.6%
	Days on Market	19	16	18.8%	22	24	-8.3%
	Percent of Original	99.4%	99.3%	0.1%	98.9%	99.4%	-0.5%
Median	Sale Price	359,000	319,950	12.2%	339,900	321,250	5.8%
	Days on Market	8	5	60.0%	6	5	20.0%
	Percent of Original	100.0%	100.0%	0.0%	100.0%	100.0%	0.0%

A total of 89 contracts for sale were written in the City of Lawrence during the month of May, down from 126 in 2025. The median list price of these homes was \$359,000, up from \$319,950 the prior year. Half of the homes that went under contract in May were on the market less than 8 days, compared to 5 days in May 2025.

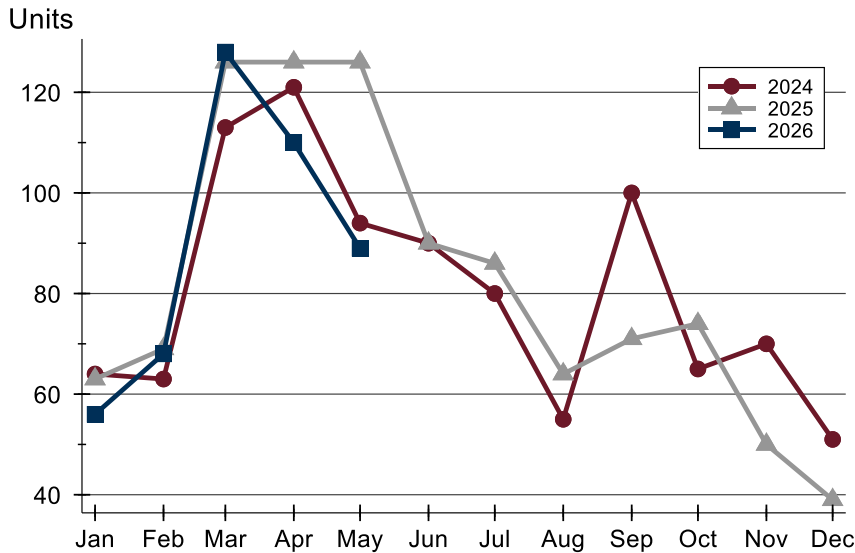
History of Contracts Written





City of Lawrence Contracts Written Analysis

Contracts Written by Month



Month	2024	2025	2026
January	64	63	56
February	63	69	68
March	113	126	128
April	121	126	110
May	94	126	89
June	90	90	
July	80	86	
August	55	64	
September	100	71	
October	65	74	
November	70	50	
December	51	39	

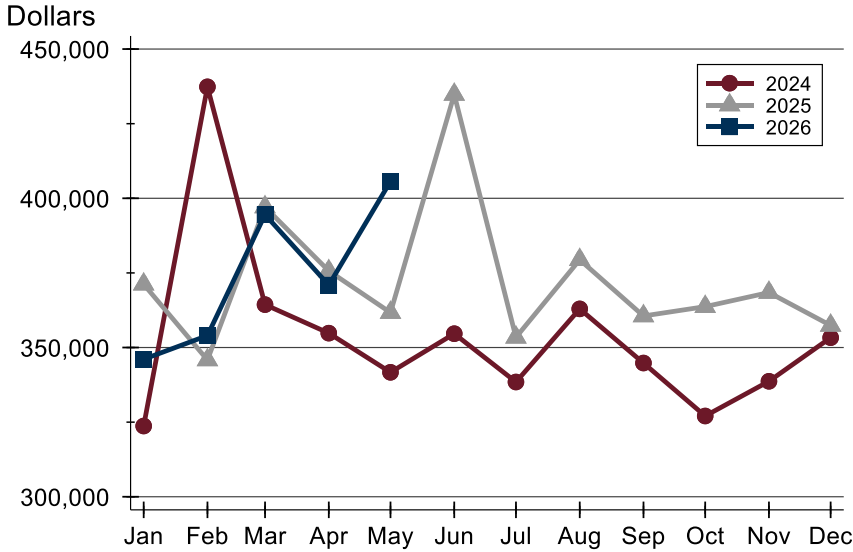
Contracts Written by Price Range

Price Range	Contracts Written		List Price		Days on Market		Price as % of Orig.	
	Number	Percent	Average	Median	Avg.	Med.	Avg.	Med.
Below \$50,000	0	0.0%	N/A	N/A	N/A	N/A	N/A	N/A
\$50,000-\$99,999	0	0.0%	N/A	N/A	N/A	N/A	N/A	N/A
\$100,000-\$149,999	1	1.1%	120,000	120,000	7	7	100.0%	100.0%
\$150,000-\$199,999	4	4.5%	179,850	180,700	25	23	97.8%	98.5%
\$200,000-\$249,999	9	10.1%	224,544	225,000	9	4	99.7%	100.0%
\$250,000-\$299,999	13	14.6%	275,108	274,900	10	5	99.9%	100.0%
\$300,000-\$349,999	15	16.9%	325,633	324,900	20	8	98.6%	100.0%
\$350,000-\$399,999	9	10.1%	367,144	365,000	10	4	100.4%	100.0%
\$400,000-\$449,999	7	7.9%	422,650	419,900	17	19	99.1%	100.0%
\$450,000-\$499,999	8	9.0%	473,294	469,950	10	6	99.3%	100.0%
\$500,000-\$599,999	13	14.6%	558,699	549,900	32	35	99.2%	100.0%
\$600,000-\$749,999	5	5.6%	657,600	660,000	54	47	98.8%	100.0%
\$750,000-\$999,999	5	5.6%	836,780	795,000	20	7	100.2%	100.0%
\$1,000,000 and up	0	0.0%	N/A	N/A	N/A	N/A	N/A	N/A



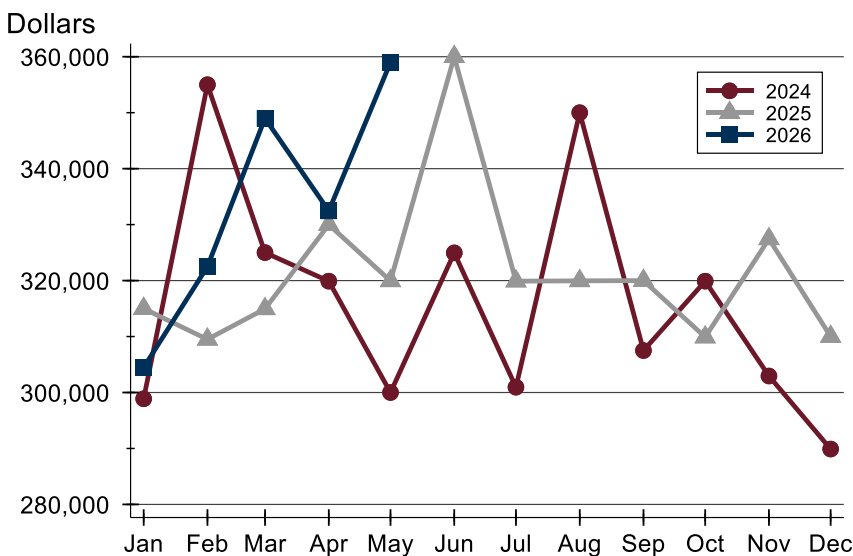
City of Lawrence Contracts Written Analysis

Average Price



Month	2024	2025	2026
January	323,707	371,215	346,068
February	437,352	345,843	354,010
March	364,385	397,088	394,532
April	354,828	375,675	370,916
May	341,694	361,708	405,678
June	354,642	434,789	
July	338,454	353,418	
August	362,953	379,417	
September	344,812	360,576	
October	327,064	363,710	
November	338,691	368,432	
December	353,308	357,411	

Median Price

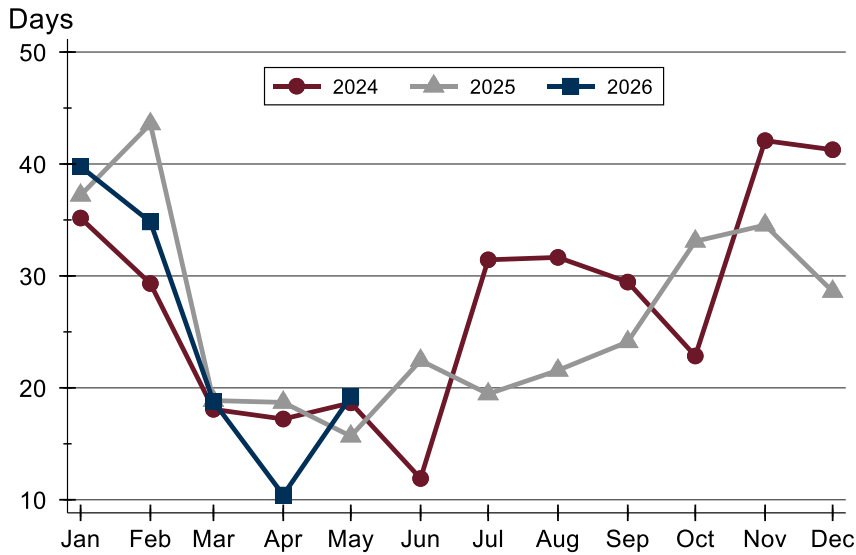


Month	2024	2025	2026
January	298,880	315,000	304,475
February	355,000	309,500	322,500
March	325,000	314,950	349,000
April	319,900	330,000	332,450
May	300,000	319,950	359,000
June	324,950	360,000	
July	300,950	319,900	
August	350,000	319,950	
September	307,500	320,000	
October	319,900	309,900	
November	302,950	327,450	
December	289,900	310,000	



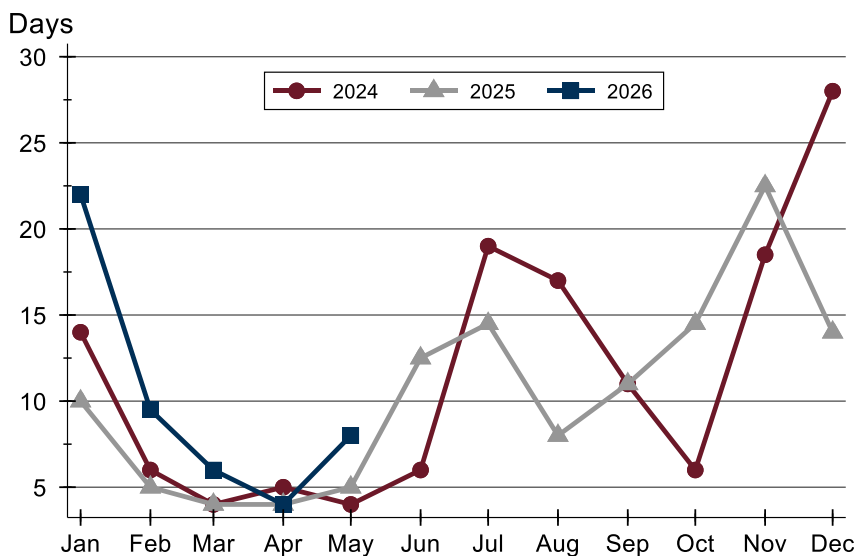
City of Lawrence Contracts Written Analysis

Average DOM



Month	2024	2025	2026
January	35	37	40
February	29	44	35
March	18	19	19
April	17	19	10
May	19	16	19
June	12	22	
July	31	19	
August	32	22	
September	29	24	
October	23	33	
November	42	35	
December	41	29	

Median DOM



Month	2024	2025	2026
January	14	10	22
February	6	5	10
March	4	4	6
April	5	4	4
May	4	5	8
June	6	13	
July	19	15	
August	17	8	
September	11	11	
October	6	15	
November	19	23	
December	28	14	



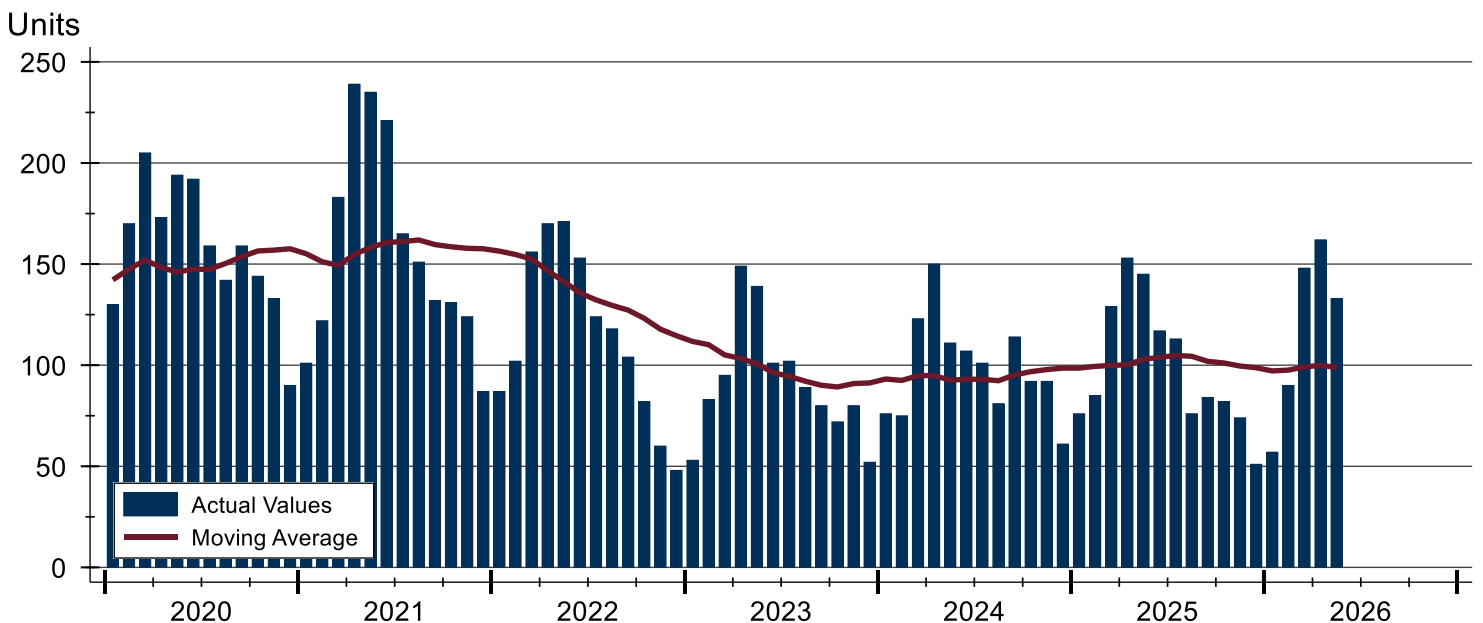
City of Lawrence Pending Contracts Analysis

Summary Statistics for Pending Contracts		2026	End of May 2025	Change
Pending Contracts		133	145	-8.3%
Volume (1,000s)		55,198	54,243	1.8%
Average	List Price	415,020	374,093	10.9%
	Days on Market	18	16	12.5%
	Percent of Original	99.3%	99.3%	0.0%
Median	List Price	375,000	310,000	21.0%
	Days on Market	7	5	40.0%
	Percent of Original	100.0%	100.0%	0.0%

A total of 133 listings in the City of Lawrence had contracts pending at the end of May, down from 145 contracts pending at the end of May 2025.

Pending contracts reflect listings with a contract in place at the end of the month. In contrast, contracts written measures the number of listings put under contract during the month.

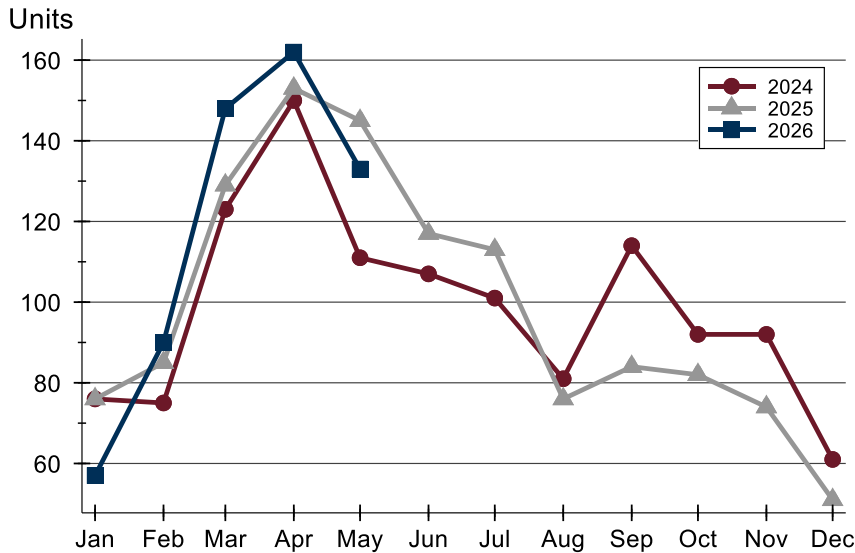
History of Pending Contracts





City of Lawrence Pending Contracts Analysis

Pending Contracts by Month



Month	2024	2025	2026
January	76	76	57
February	75	85	90
March	123	129	148
April	150	153	162
May	111	145	133
June	107	117	
July	101	113	
August	81	76	
September	114	84	
October	92	82	
November	92	74	
December	61	51	

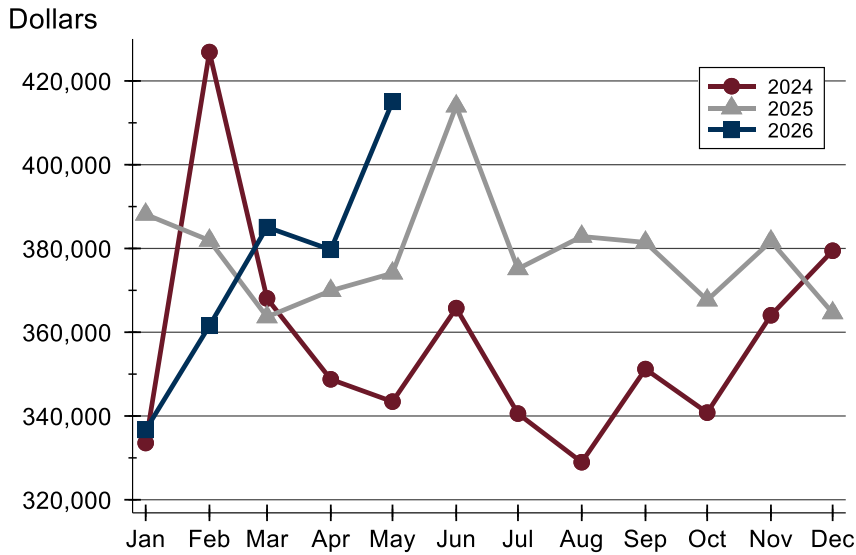
Pending Contracts by Price Range

Price Range	Pending Contracts		List Price		Days on Market		Price as % of Orig.	
	Number	Percent	Average	Median	Avg.	Med.	Avg.	Med.
Below \$50,000	0	0.0%	N/A	N/A	N/A	N/A	N/A	N/A
\$50,000-\$99,999	1	0.8%	84,900	84,900	11	11	100.0%	100.0%
\$100,000-\$149,999	3	2.3%	126,317	120,000	39	7	95.8%	100.0%
\$150,000-\$199,999	7	5.3%	181,314	184,900	33	28	98.0%	100.0%
\$200,000-\$249,999	10	7.5%	229,760	227,500	8	4	99.6%	100.0%
\$250,000-\$299,999	16	12.0%	279,088	280,000	8	5	99.8%	100.0%
\$300,000-\$349,999	21	15.8%	326,614	324,900	22	8	98.8%	100.0%
\$350,000-\$399,999	10	7.5%	366,413	364,450	9	4	100.5%	100.0%
\$400,000-\$449,999	16	12.0%	425,141	420,000	18	15	98.8%	100.0%
\$450,000-\$499,999	13	9.8%	481,542	485,000	9	6	99.2%	100.0%
\$500,000-\$599,999	21	15.8%	555,375	549,900	23	13	99.5%	100.0%
\$600,000-\$749,999	7	5.3%	661,857	660,000	43	23	99.2%	100.0%
\$750,000-\$999,999	8	6.0%	852,543	837,450	15	5	100.1%	100.0%
\$1,000,000 and up	0	0.0%	N/A	N/A	N/A	N/A	N/A	N/A



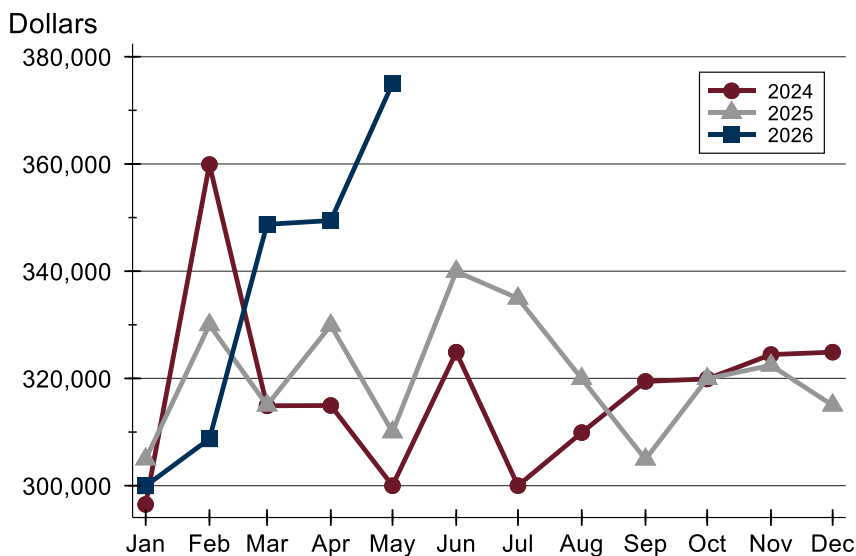
City of Lawrence Pending Contracts Analysis

Average Price



Month	2024	2025	2026
January	333,556	388,137	336,683
February	426,894	381,923	361,544
March	368,083	363,646	385,089
April	348,759	369,918	379,686
May	343,428	374,093	415,020
June	365,760	413,985	
July	340,577	375,138	
August	328,967	382,863	
September	351,206	381,444	
October	340,800	367,657	
November	364,048	381,714	
December	379,455	364,610	

Median Price

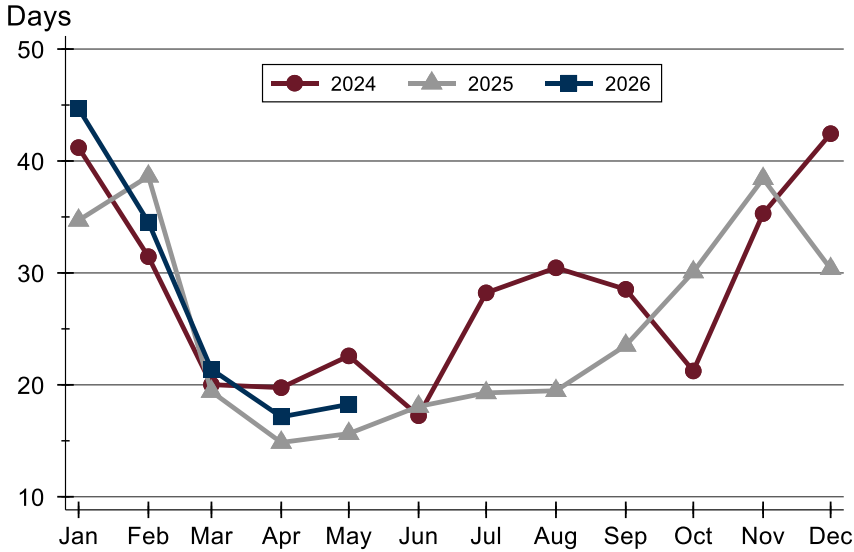


Month	2024	2025	2026
January	296,500	304,950	299,950
February	359,900	330,000	308,725
March	314,900	315,000	348,750
April	314,950	329,900	349,450
May	300,000	310,000	375,000
June	324,900	339,950	
July	300,000	334,950	
August	309,900	319,950	
September	319,450	304,925	
October	319,900	319,950	
November	324,450	322,450	
December	324,900	315,000	



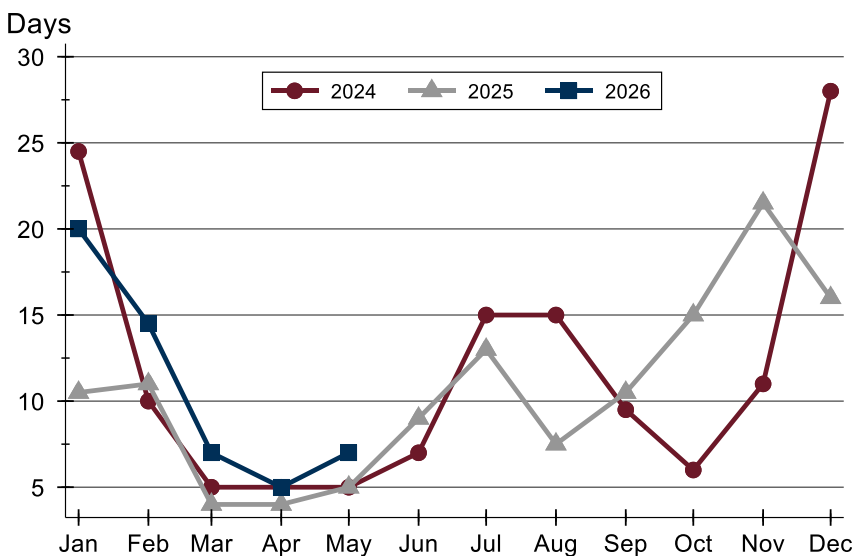
City of Lawrence Pending Contracts Analysis

Average DOM



Month	2024	2025	2026
January	41	35	45
February	31	39	35
March	20	19	21
April	20	15	17
May	23	16	18
June	17	18	17
July	28	19	28
August	30	19	30
September	29	24	29
October	21	30	21
November	35	38	35
December	42	30	42

Median DOM



Month	2024	2025	2026
January	25	11	20
February	10	11	15
March	5	4	7
April	5	4	5
May	5	5	7
June	7	9	7
July	15	13	15
August	15	8	15
September	10	11	10
October	6	15	6
November	11	22	11
December	28	16	28