



**November  
2025**

## Lawrence MLS Statistics



# City of Lawrence Housing Report



## Market Overview

### City of Lawrence Home Sales Fell in November

Total home sales in the City of Lawrence fell last month to 61 units, compared to 67 units in November 2024. Total sales volume was \$21.4 million, down from a year earlier.

The median sale price in November was \$332,000, up from \$319,000 a year earlier. Homes that sold in November were typically on the market for 17 days and sold for 100.0% of their list prices.

### City of Lawrence Active Listings Down at End of November

The total number of active listings in the City of Lawrence at the end of November was 142 units, down from 162 at the same point in 2024. This represents a 1.7 months' supply of homes available for sale. The median list price of homes on the market at the end of November was \$359,000.

During November, a total of 49 contracts were written down from 70 in November 2024. At the end of the month, there were 74 contracts still pending.

## Report Contents

- Summary Statistics – Page 2
- Closed Listing Analysis – Page 3
- Active Listings Analysis – Page 7
- Months' Supply Analysis – Page 11
- New Listings Analysis – Page 12
- Contracts Written Analysis – Page 15
- Pending Contracts Analysis – Page 19

## Contact Information

Rob Hulse, Executive Vice-President  
Lawrence Board of REALTORS®  
3838 W. 6th Street (at Monterey)  
Lawrence, KS 66049  
785-842-1843  
[Rob@LawrenceRealtor.com](mailto:Rob@LawrenceRealtor.com)  
[www.LawrenceRealtor.com](http://www.LawrenceRealtor.com)



**November  
2025**

# Lawrence MLS Statistics



## City of Lawrence Summary Statistics

November MLS Statistics Three-year History		Current Month			Year-to-Date		
		2025	2024	2023	2025	2024	2023
<b>Home Sales</b> Change from prior year		<b>61</b> -9.0%	<b>67</b> 21.8%	<b>55</b> -21.4%	<b>932</b> 6.2%	<b>878</b> 5.0%	<b>836</b> -23.9%
<b>Active Listings</b> Change from prior year		<b>142</b> -12.3%	<b>162</b> 11.7%	<b>145</b> 39.4%	<b>N/A</b>	<b>N/A</b>	<b>N/A</b>
<b>Months' Supply</b> Change from prior year		<b>1.7</b> -15.0%	<b>2.0</b> 0.0%	<b>2.0</b> 100.0%	<b>N/A</b>	<b>N/A</b>	<b>N/A</b>
<b>New Listings</b> Change from prior year		<b>58</b> -18.3%	<b>71</b> -14.5%	<b>83</b> 29.7%	<b>1,178</b> -4.1%	<b>1,228</b> 10.0%	<b>1,116</b> -12.6%
<b>Contracts Written</b> Change from prior year		<b>49</b> -30.0%	<b>70</b> 6.1%	<b>66</b> 29.4%	<b>941</b> 2.8%	<b>915</b> 5.9%	<b>864</b> -19.3%
<b>Pending Contracts</b> Change from prior year		<b>74</b> -19.6%	<b>92</b> 15.0%	<b>80</b> 33.3%	<b>N/A</b>	<b>N/A</b>	<b>N/A</b>
<b>Sales Volume (1,000s)</b> Change from prior year		<b>21,405</b> -1.0%	<b>21,613</b> 8.9%	<b>19,853</b> -8.7%	<b>344,592</b> 13.4%	<b>303,966</b> 6.5%	<b>285,333</b> -20.8%
Average	<b>Sale Price</b> Change from prior year	<b>350,902</b> 8.8%	<b>322,575</b> -10.6%	<b>360,959</b> 16.3%	<b>369,734</b> 6.8%	<b>346,203</b> 1.4%	<b>341,308</b> 4.0%
	<b>List Price of Actives</b> Change from prior year	<b>448,229</b> 17.8%	<b>380,374</b> 2.7%	<b>370,337</b> 2.9%	<b>N/A</b>	<b>N/A</b>	<b>N/A</b>
	<b>Days on Market</b> Change from prior year	<b>32</b> 23.1%	<b>26</b> 13.0%	<b>23</b> 15.0%	<b>25</b> 4.2%	<b>24</b> 26.3%	<b>19</b> 26.7%
	<b>Percent of List</b> Change from prior year	<b>98.6%</b> -0.6%	<b>99.2%</b> 1.1%	<b>98.1%</b> -1.5%	<b>99.3%</b> 0.2%	<b>99.1%</b> -1.3%	<b>100.4%</b> -1.1%
	<b>Percent of Original</b> Change from prior year	<b>95.9%</b> -2.2%	<b>98.1%</b> 1.2%	<b>96.9%</b> -1.4%	<b>98.2%</b> -0.2%	<b>98.4%</b> -1.4%	<b>99.8%</b> -0.9%
Median	<b>Sale Price</b> Change from prior year	<b>332,000</b> 4.1%	<b>319,000</b> 2.9%	<b>310,000</b> 19.2%	<b>320,250</b> 1.7%	<b>315,000</b> 3.3%	<b>305,000</b> 5.2%
	<b>List Price of Actives</b> Change from prior year	<b>359,000</b> 13.1%	<b>317,450</b> -2.3%	<b>324,900</b> 4.0%	<b>N/A</b>	<b>N/A</b>	<b>N/A</b>
	<b>Days on Market</b> Change from prior year	<b>17</b> 240.0%	<b>5</b> -61.5%	<b>13</b> 85.7%	<b>7</b> -12.5%	<b>8</b> 60.0%	<b>5</b> 25.0%
	<b>Percent of List</b> Change from prior year	<b>100.0%</b> 0.0%	<b>100.0%</b> 0.9%	<b>99.1%</b> -0.9%	<b>100.0%</b> 0.0%	<b>100.0%</b> 0.0%	<b>100.0%</b> 0.0%
	<b>Percent of Original</b> Change from prior year	<b>98.2%</b> -1.8%	<b>100.0%</b> 1.9%	<b>98.1%</b> -0.2%	<b>100.0%</b> 0.0%	<b>100.0%</b> 0.0%	<b>100.0%</b> 0.0%

Note: Year-to-date statistics cannot be calculated for Active Listings, Months' Supply and Pending Contracts.



**November  
2025**

## Lawrence MLS Statistics



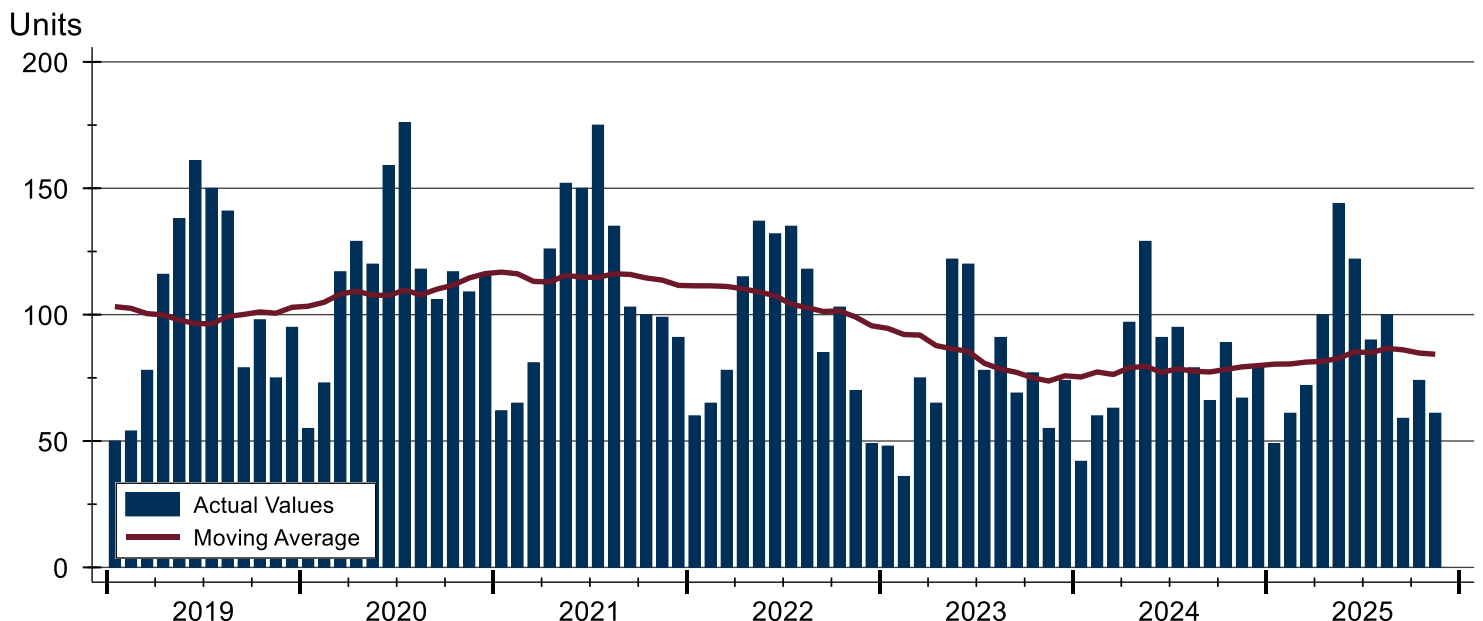
### City of Lawrence Closed Listings Analysis

Summary Statistics for Closed Listings		2025	November 2024	Change	2025	Year-to-Date 2024	Change
Closed Listings		61	67	-9.0%	932	878	6.2%
Volume (1,000s)		21,405	21,613	-1.0%	344,592	303,966	13.4%
Months' Supply		1.7	2.0	-15.0%	N/A	N/A	N/A
Average	Sale Price	350,902	322,575	8.8%	369,734	346,203	6.8%
	Days on Market	32	26	23.1%	25	24	4.2%
	Percent of List	98.6%	99.2%	-0.6%	99.3%	99.1%	0.2%
	Percent of Original	95.9%	98.1%	-2.2%	98.2%	98.4%	-0.2%
Median	Sale Price	332,000	319,000	4.1%	320,250	315,000	1.7%
	Days on Market	17	5	240.0%	7	8	-12.5%
	Percent of List	100.0%	100.0%	0.0%	100.0%	100.0%	0.0%
	Percent of Original	98.2%	100.0%	-1.8%	100.0%	100.0%	0.0%

A total of 61 homes sold in the City of Lawrence in November, down from 67 units in November 2024. Total sales volume fell to \$21.4 million compared to \$21.6 million in the previous year.

The median sales price in November was \$332,000, up 4.1% compared to the prior year. Median days on market was 17 days, up from 10 days in October, and up from 5 in November 2024.

### History of Closed Listings





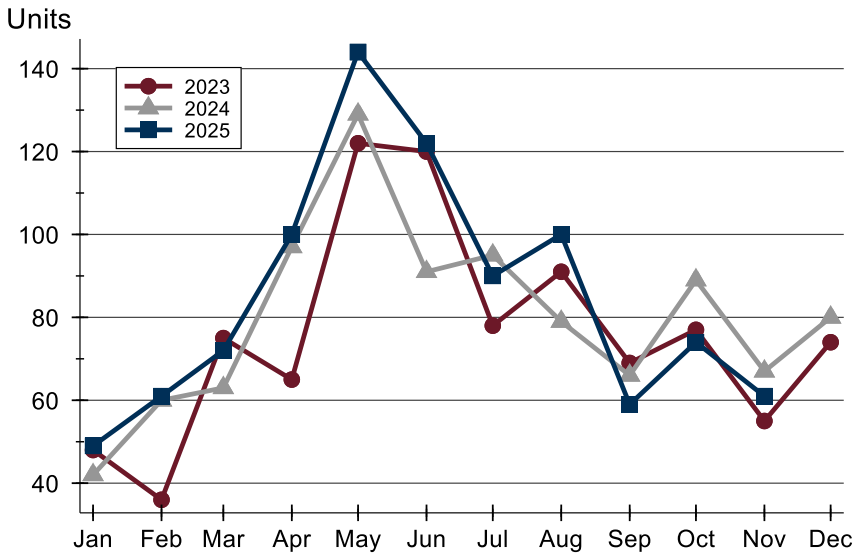
**November  
2025**

## Lawrence MLS Statistics



### City of Lawrence Closed Listings Analysis

#### Closed Listings by Month



Month	2023	2024	2025
January	48	42	49
February	36	60	61
March	75	63	72
April	65	97	100
May	122	129	144
June	120	91	122
July	78	95	90
August	91	79	100
September	69	66	59
October	77	89	74
November	55	67	61
December	74	80	

#### Closed Listings by Price Range

Price Range	Sales Number	Percent	Months' Supply	Sale Price Average	Median	Days on Market Avg.	Med.	Price as % of List Avg.	Med.	Price as % of Orig. Avg.	Med.
Below \$50,000	0	0.0%	N/A	N/A	N/A	N/A	N/A	N/A	N/A	N/A	N/A
\$50,000-\$99,999	2	3.3%	8.0	87,500	87,500	40	40	90.9%	90.9%	87.0%	87.0%
\$100,000-\$149,999	2	3.3%	2.1	125,000	125,000	87	87	101.9%	101.9%	96.5%	96.5%
\$150,000-\$199,999	6	9.8%	0.9	177,733	176,500	36	33	98.7%	97.2%	93.2%	89.5%
\$200,000-\$249,999	4	6.6%	1.0	227,975	223,500	36	26	96.7%	98.9%	89.5%	90.1%
\$250,000-\$299,999	13	21.3%	1.7	271,446	274,900	41	38	97.9%	98.7%	94.6%	98.2%
\$300,000-\$349,999	7	11.5%	1.1	329,543	332,000	8	4	99.5%	100.0%	99.1%	100.0%
\$350,000-\$399,999	7	11.5%	1.8	365,379	365,000	19	14	99.8%	99.2%	98.5%	97.8%
\$400,000-\$449,999	5	8.2%	0.7	425,142	422,000	21	21	99.7%	100.0%	99.2%	100.0%
\$450,000-\$499,999	2	3.3%	2.5	480,000	480,000	41	41	100.0%	100.0%	95.2%	95.2%
\$500,000-\$599,999	8	13.1%	1.8	547,150	547,500	31	9	99.5%	100.0%	97.6%	100.0%
\$600,000-\$749,999	5	8.2%	3.0	629,108	620,000	33	36	97.4%	97.2%	97.1%	97.2%
\$750,000-\$999,999	0	0.0%	3.7	N/A	N/A	N/A	N/A	N/A	N/A	N/A	N/A
\$1,000,000 and up	0	0.0%	10.7	N/A	N/A	N/A	N/A	N/A	N/A	N/A	N/A



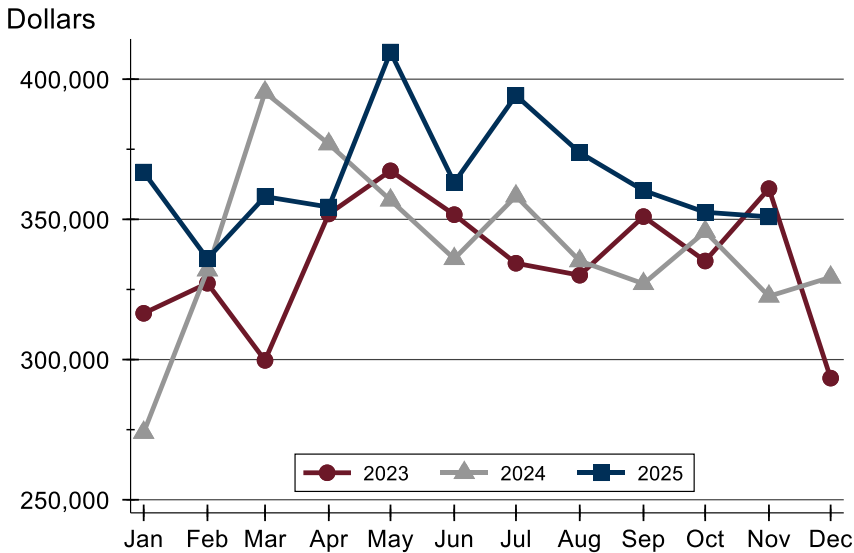
**November  
2025**

## Lawrence MLS Statistics



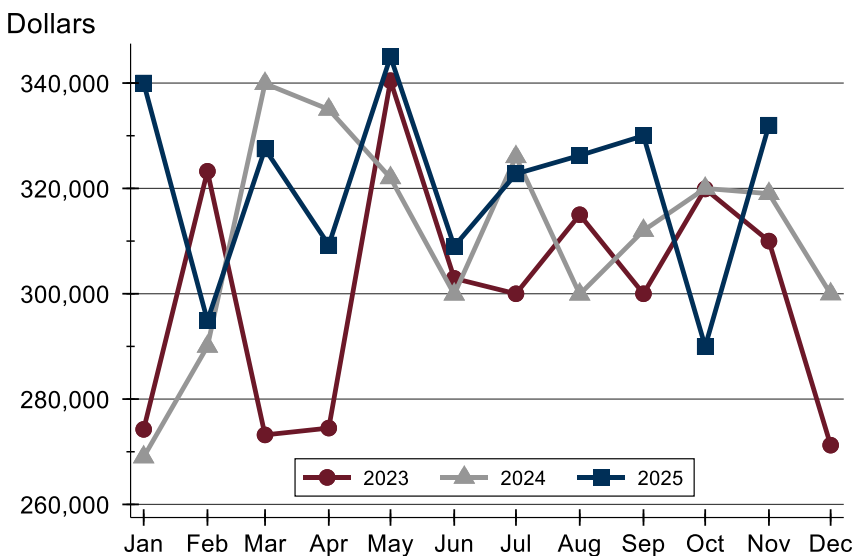
### City of Lawrence Closed Listings Analysis

#### Average Price



Month	2023	2024	2025
January	316,490	273,973	366,863
February	327,216	331,921	335,951
March	299,705	395,294	358,114
April	351,932	376,885	354,396
May	367,315	356,843	409,665
June	351,680	335,946	363,112
July	334,347	358,291	394,198
August	330,085	335,185	373,798
September	350,988	327,043	360,303
October	335,150	345,662	352,531
November	360,959	322,575	350,902
December	293,378	329,339	

#### Median Price

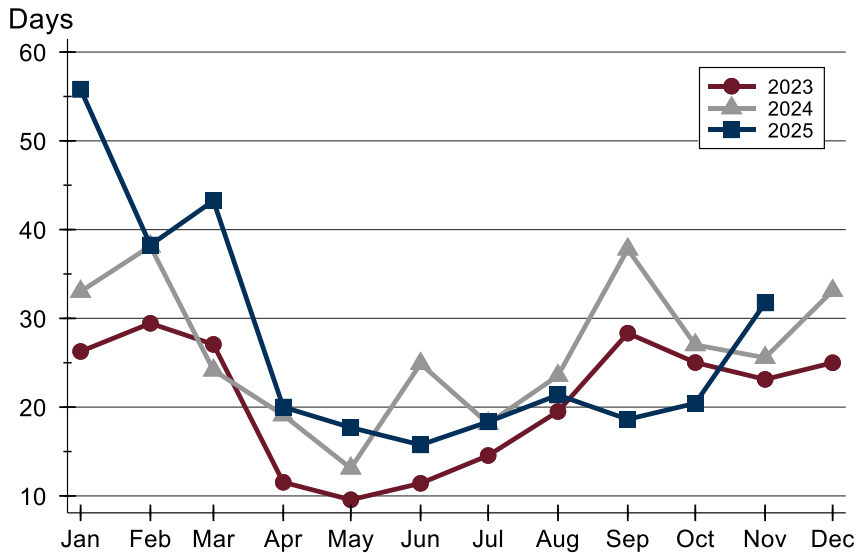


Month	2023	2024	2025
January	274,250	269,000	340,000
February	323,250	290,000	294,900
March	273,200	339,900	327,500
April	274,500	335,000	309,253
May	340,450	322,000	345,000
June	302,915	299,900	309,000
July	300,000	326,000	322,750
August	315,000	299,900	326,250
September	300,000	312,000	330,000
October	319,900	320,000	289,999
November	310,000	319,000	332,000
December	271,250	299,950	



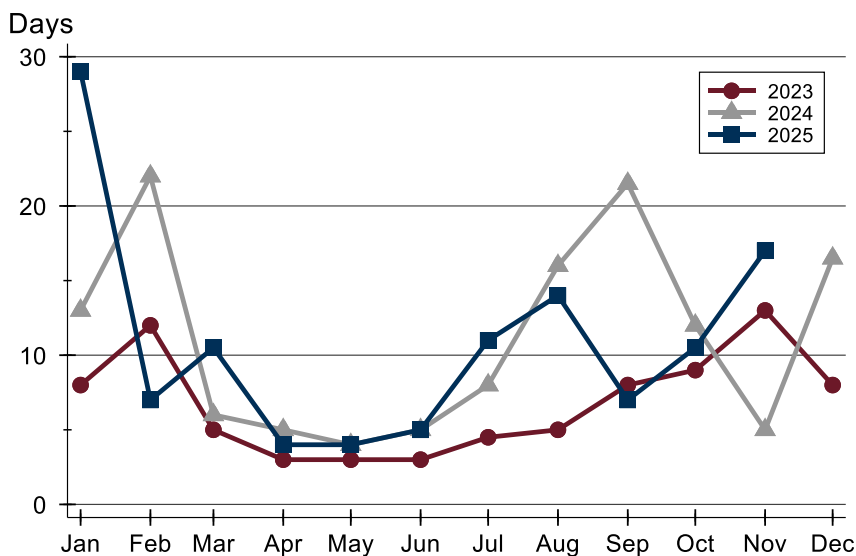
## City of Lawrence Closed Listings Analysis

### Average DOM



Month	2023	2024	2025
January	26	33	56
February	29	38	38
March	27	24	43
April	12	19	20
May	10	13	18
June	11	25	16
July	15	18	18
August	20	24	21
September	28	38	19
October	25	27	20
November	23	26	32
December	25	33	

### Median DOM



Month	2023	2024	2025
January	8	13	29
February	12	22	7
March	5	6	11
April	3	5	4
May	3	4	4
June	3	5	5
July	5	8	11
August	5	16	14
September	8	22	7
October	9	12	11
November	13	5	17
December	8	17	



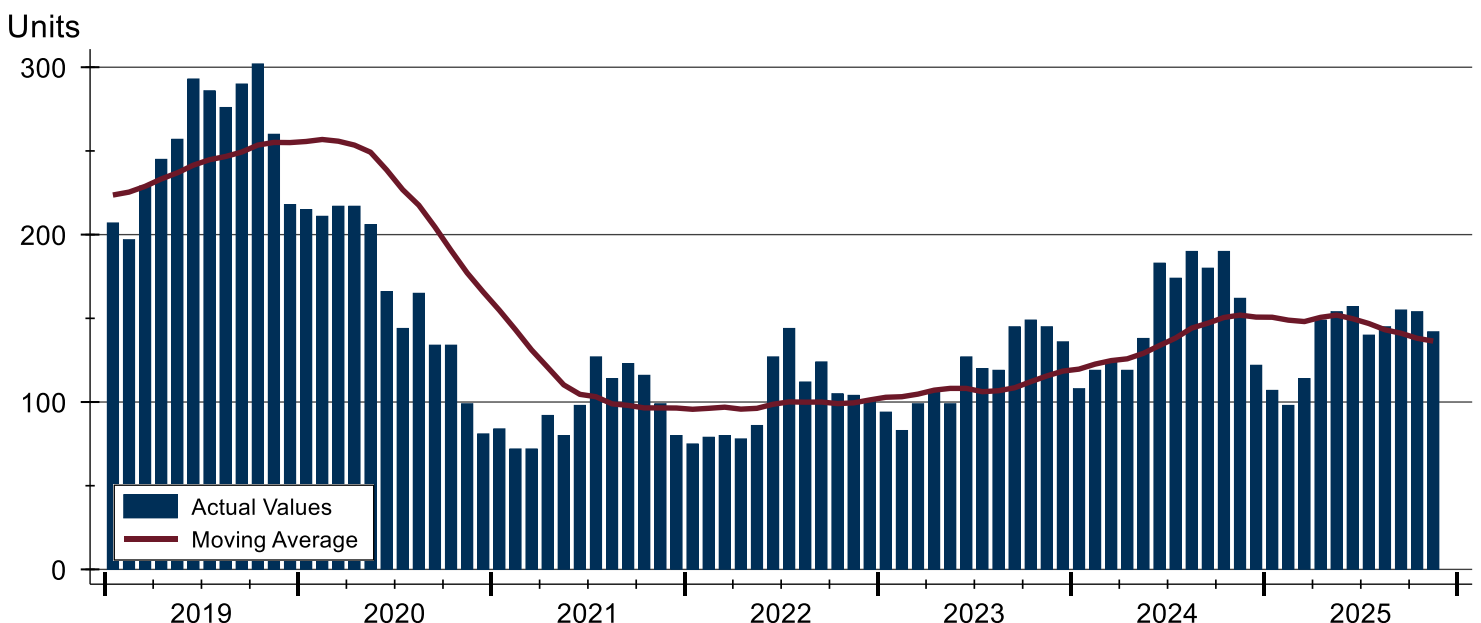
## City of Lawrence Active Listings Analysis

Summary Statistics for Active Listings		2025	End of November 2024	Change
Active Listings		<b>142</b>	162	-12.3%
Volume (1,000s)		<b>63,648</b>	61,621	3.3%
Months' Supply		<b>1.7</b>	2.0	-15.0%
Average	List Price	<b>448,229</b>	380,374	17.8%
	Days on Market	<b>48</b>	73	-34.2%
	Percent of Original	<b>98.2%</b>	97.9%	0.3%
Median	List Price	<b>359,000</b>	317,450	13.1%
	Days on Market	<b>27</b>	59	-54.2%
	Percent of Original	<b>100.0%</b>	100.0%	0.0%

A total of 142 homes were available for sale in the City of Lawrence at the end of November. This represents a 1.7 months' supply of active listings.

The median list price of homes on the market at the end of November was \$359,000, up 13.1% from 2024. The typical time on market for active listings was 27 days, down from 59 days a year earlier.

## History of Active Listings





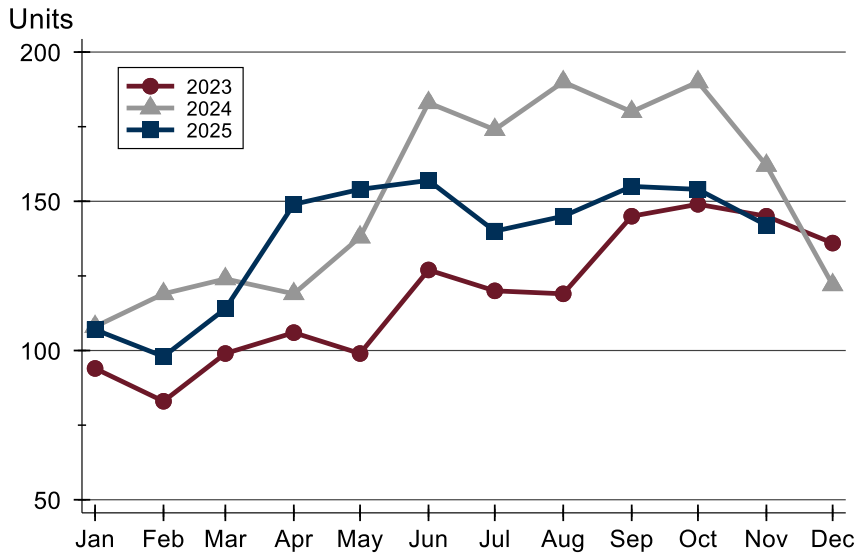
**November  
2025**

## Lawrence MLS Statistics



### City of Lawrence Active Listings Analysis

#### Active Listings by Month



Month	2023	2024	2025
January	94	108	107
February	83	119	98
March	99	124	114
April	106	119	149
May	99	138	154
June	127	183	157
July	120	174	140
August	119	190	145
September	145	180	155
October	149	190	154
November	145	162	142
December	136	122	

#### Active Listings by Price Range

Price Range	Active Listings Number	Percent	Months' Supply	List Price Average	Median	Days on Market Avg.	Med.	Price as % of Orig. Avg.	Med.
Below \$50,000	1	0.7%	N/A	3,200	3,200	4	4	100.0%	100.0%
\$50,000-\$99,999	4	2.8%	8.0	84,905	86,725	60	46	92.8%	99.1%
\$100,000-\$149,999	6	4.2%	2.1	129,450	129,950	46	35	94.7%	98.5%
\$150,000-\$199,999	5	3.5%	0.9	179,750	189,900	42	25	98.2%	100.0%
\$200,000-\$249,999	12	8.5%	1.0	234,325	239,900	58	63	97.8%	100.0%
\$250,000-\$299,999	24	16.9%	1.7	278,540	272,500	40	36	98.8%	100.0%
\$300,000-\$349,999	16	11.3%	1.1	327,006	327,450	34	18	99.1%	100.0%
\$350,000-\$399,999	17	12.0%	1.8	376,153	379,900	19	7	99.5%	100.0%
\$400,000-\$449,999	5	3.5%	0.7	436,760	439,000	20	20	98.1%	100.0%
\$450,000-\$499,999	11	7.7%	2.5	474,325	479,000	44	35	97.4%	98.0%
\$500,000-\$599,999	12	8.5%	1.8	538,775	534,950	56	44	98.6%	100.0%
\$600,000-\$749,999	13	9.2%	3.0	675,638	659,900	56	17	98.8%	100.0%
\$750,000-\$999,999	8	5.6%	3.7	867,338	869,450	36	20	99.6%	100.0%
\$1,000,000 and up	8	5.6%	10.7	1,364,750	1,412,500	169	56	95.5%	98.8%





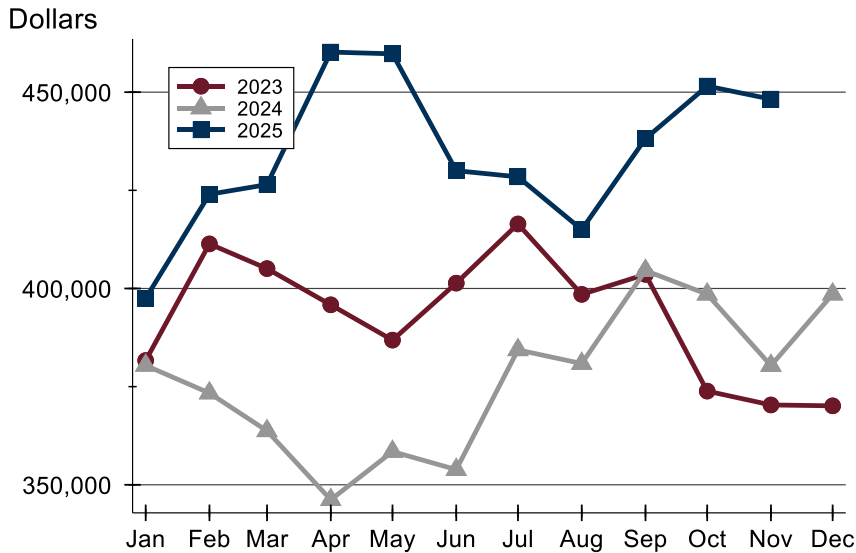
**November  
2025**

## Lawrence MLS Statistics



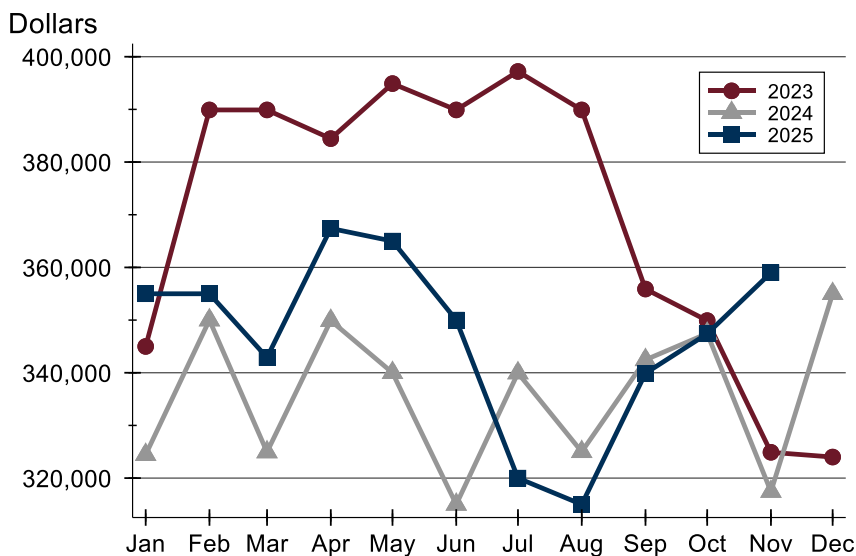
### City of Lawrence Active Listings Analysis

#### Average Price



Month	2023	2024	2025
January	381,662	380,405	397,492
February	411,359	373,361	423,998
March	405,067	363,744	426,466
April	395,842	346,189	460,216
May	386,853	358,466	459,766
June	401,362	353,875	430,003
July	416,435	384,366	428,439
August	398,505	380,883	415,012
September	403,598	404,570	438,170
October	373,865	398,530	451,550
November	370,337	380,374	448,229
December	370,118	398,546	

#### Median Price

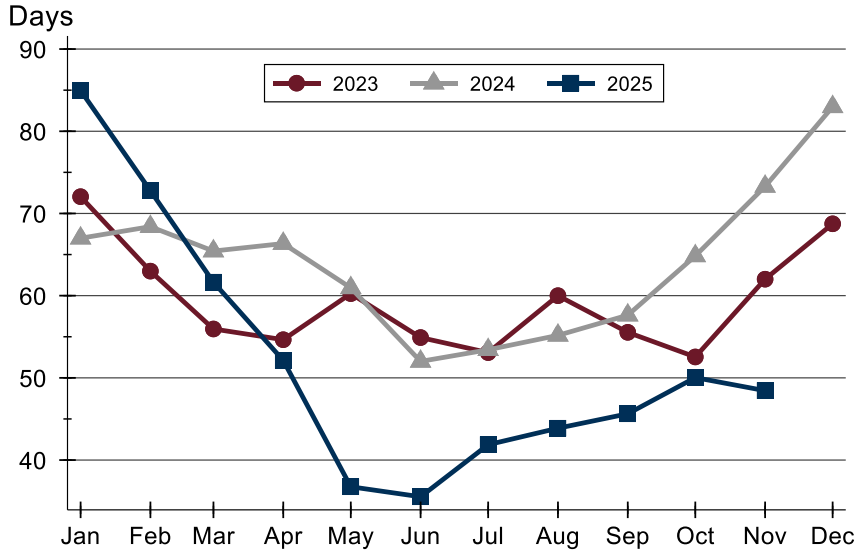


Month	2023	2024	2025
January	345,000	324,450	355,000
February	389,900	350,000	355,000
March	389,900	324,950	342,900
April	384,450	349,900	367,400
May	394,900	340,000	365,000
June	389,900	315,000	350,000
July	397,200	339,950	320,000
August	389,900	325,000	315,000
September	355,900	342,450	339,900
October	349,900	347,450	347,400
November	324,900	317,450	359,000
December	324,000	355,000	



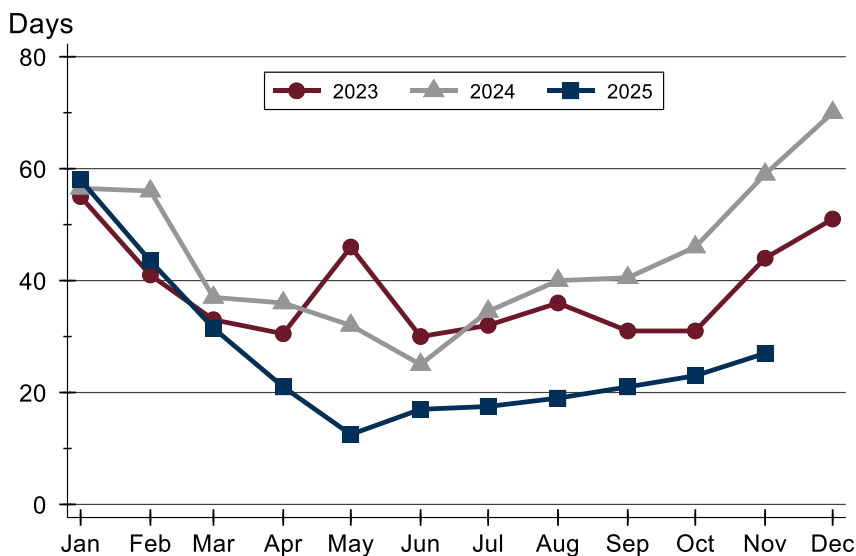
## City of Lawrence Active Listings Analysis

### Average DOM



Month	2023	2024	2025
January	72	67	85
February	63	68	73
March	56	65	62
April	55	66	52
May	60	61	37
June	55	52	36
July	53	53	42
August	60	55	44
September	56	58	46
October	53	65	50
November	62	73	48
December	69	83	

### Median DOM

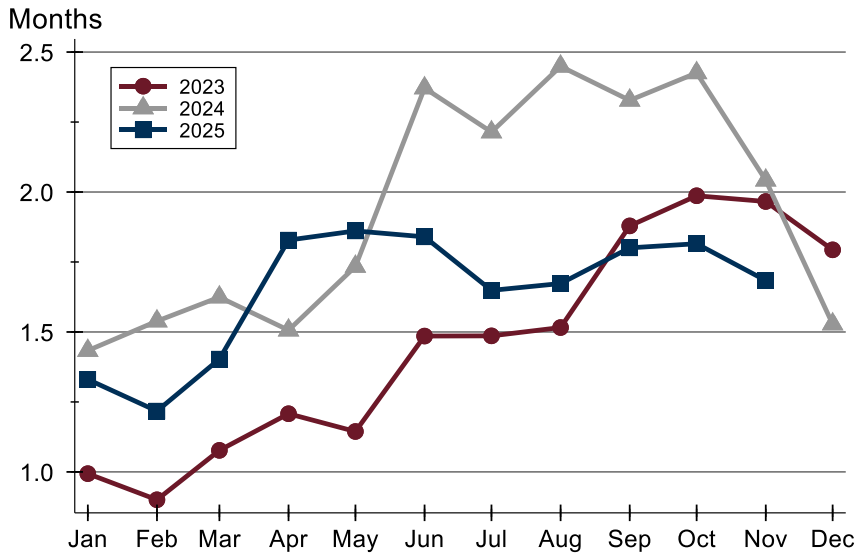


Month	2023	2024	2025
January	55	57	58
February	41	56	44
March	33	37	32
April	31	36	21
May	46	32	13
June	30	25	17
July	32	35	18
August	36	40	19
September	31	41	21
October	31	46	23
November	44	59	27
December	51	70	



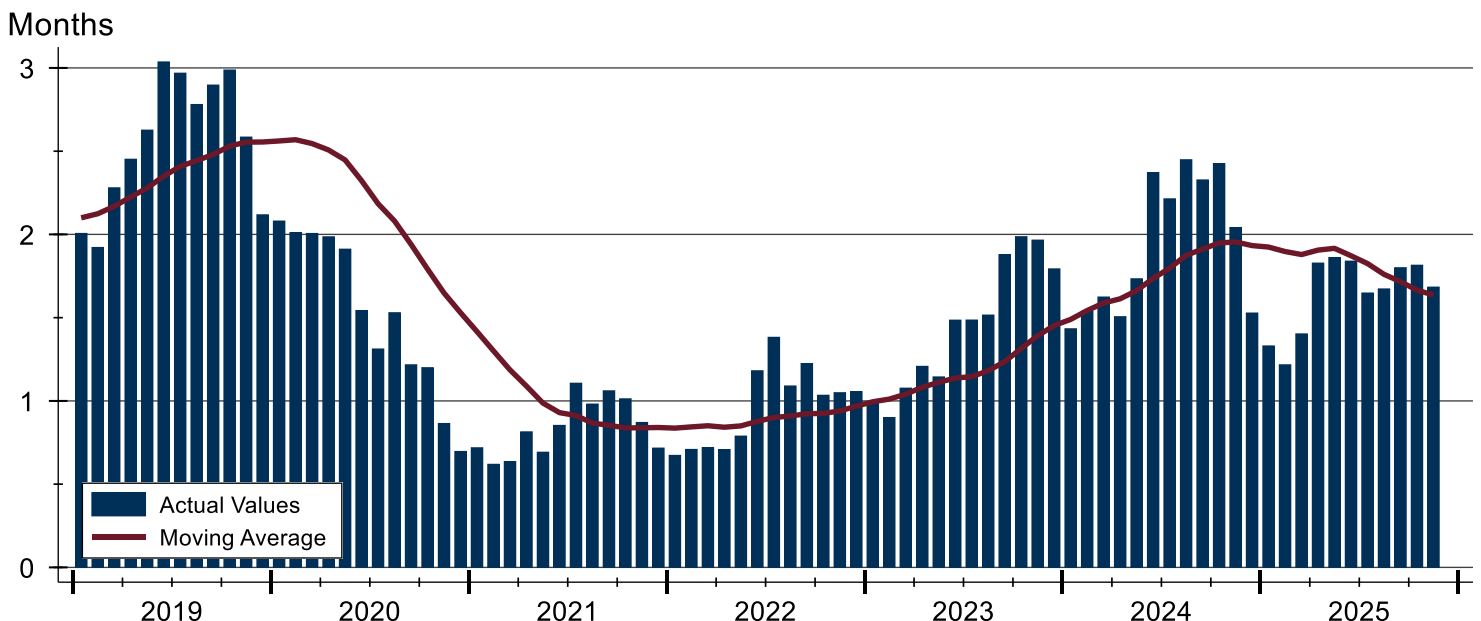
## City of Lawrence Months' Supply Analysis

### Months' Supply by Month



Month	2023	2024	2025
January	1.0	1.4	1.3
February	0.9	1.5	1.2
March	1.1	1.6	1.4
April	1.2	1.5	1.8
May	1.1	1.7	1.9
June	1.5	2.4	1.8
July	1.5	2.2	1.6
August	1.5	2.4	1.7
September	1.9	2.3	1.8
October	2.0	2.4	1.8
November	2.0	2.0	1.7
December	1.8	1.5	1.7

### History of Month's Supply





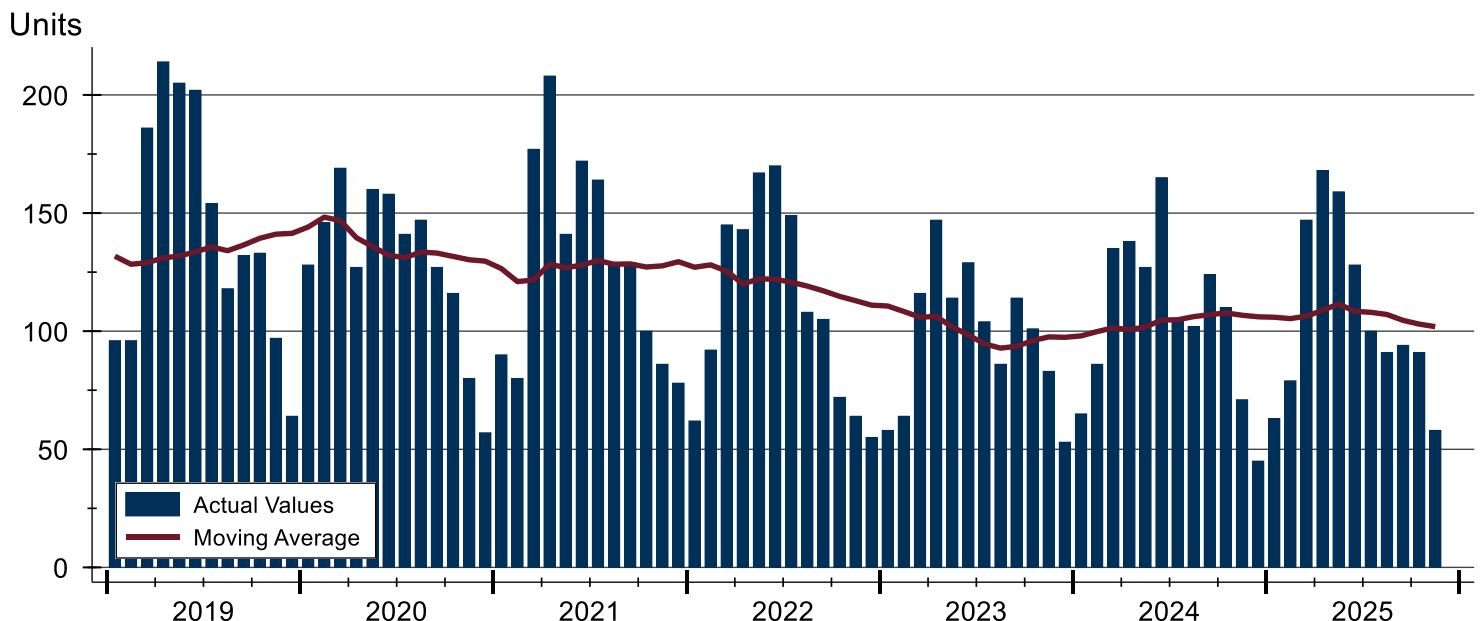
## City of Lawrence New Listings Analysis

Summary Statistics for New Listings		2025	November 2024	Change
Current Month	New Listings	<b>58</b>	71	-18.3%
	Volume (1,000s)	<b>23,002</b>	22,626	1.7%
	Average List Price	<b>396,588</b>	318,672	24.5%
	Median List Price	<b>372,500</b>	289,900	28.5%
Year-to-Date	New Listings	<b>1,178</b>	1,228	-4.1%
	Volume (1,000s)	<b>458,796</b>	435,446	5.4%
	Average List Price	<b>389,470</b>	354,598	9.8%
	Median List Price	<b>325,000</b>	315,250	3.1%

A total of 58 new listings were added in the City of Lawrence during November, down 18.3% from the same month in 2024. Year-to-date the City of Lawrence has seen 1,178 new listings.

The median list price of these homes was \$372,500 up from \$289,900 in 2024.

## History of New Listings





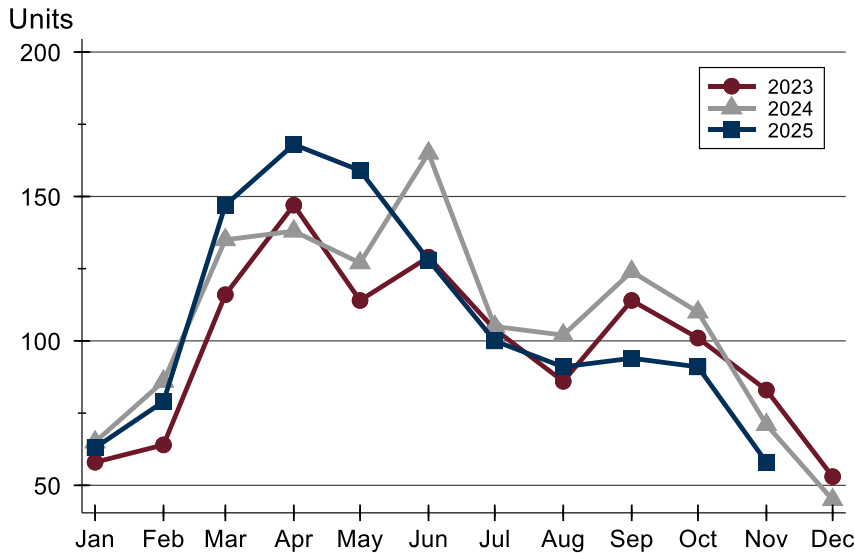
**November  
2025**

## Lawrence MLS Statistics



### City of Lawrence New Listings Analysis

#### New Listings by Month



Month	2023	2024	2025
January	58	65	63
February	64	86	79
March	116	135	147
April	147	138	168
May	114	127	159
June	129	165	128
July	104	105	100
August	86	102	91
September	114	124	94
October	101	110	91
November	83	71	58
December	53	45	

#### New Listings by Price Range

Price Range	New Listings Number	Percent	List Price Average	Median	Days on Market Avg.	Med.	Price as % of Orig. Avg.	Med.
Below \$50,000	1	1.7%	3,200	3,200	4	4	100.0%	100.0%
\$50,000-\$99,999	0	0.0%	N/A	N/A	N/A	N/A	N/A	N/A
\$100,000-\$149,999	1	1.7%	100,000	100,000	3	3	100.0%	100.0%
\$150,000-\$199,999	2	3.4%	174,500	174,500	8	8	100.0%	100.0%
\$200,000-\$249,999	2	3.4%	237,450	237,450	7	7	100.0%	100.0%
\$250,000-\$299,999	11	19.0%	276,655	274,500	9	7	100.0%	100.0%
\$300,000-\$349,999	8	13.8%	330,013	327,450	12	11	100.0%	100.0%
\$350,000-\$399,999	12	20.7%	382,067	381,950	9	6	99.7%	100.0%
\$400,000-\$449,999	3	5.2%	432,500	435,000	9	8	100.0%	100.0%
\$450,000-\$499,999	6	10.3%	474,817	485,000	8	10	99.7%	100.0%
\$500,000-\$599,999	5	8.6%	553,160	539,900	11	9	100.0%	100.0%
\$600,000-\$749,999	6	10.3%	689,133	699,950	7	4	98.3%	100.0%
\$750,000-\$999,999	1	1.7%	759,900	759,900	6	6	100.0%	100.0%
\$1,000,000 and up	0	0.0%	N/A	N/A	N/A	N/A	N/A	N/A



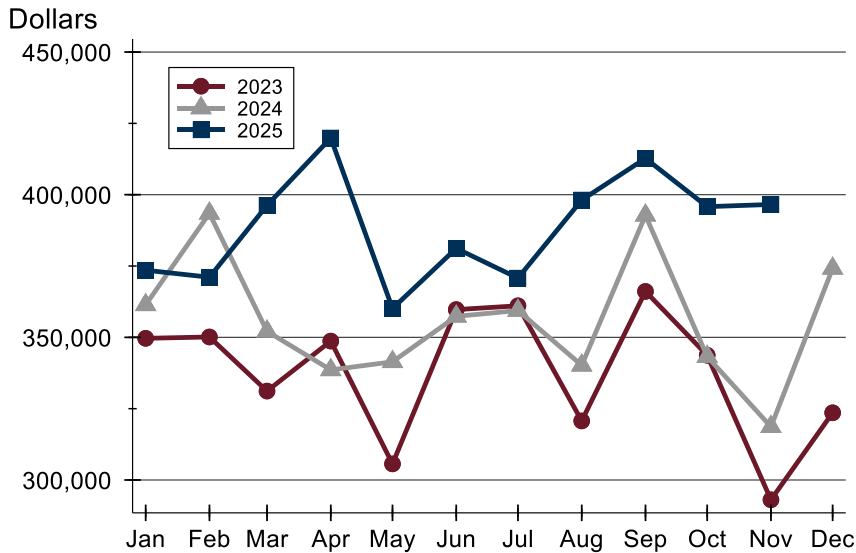
**November  
2025**

## Lawrence MLS Statistics



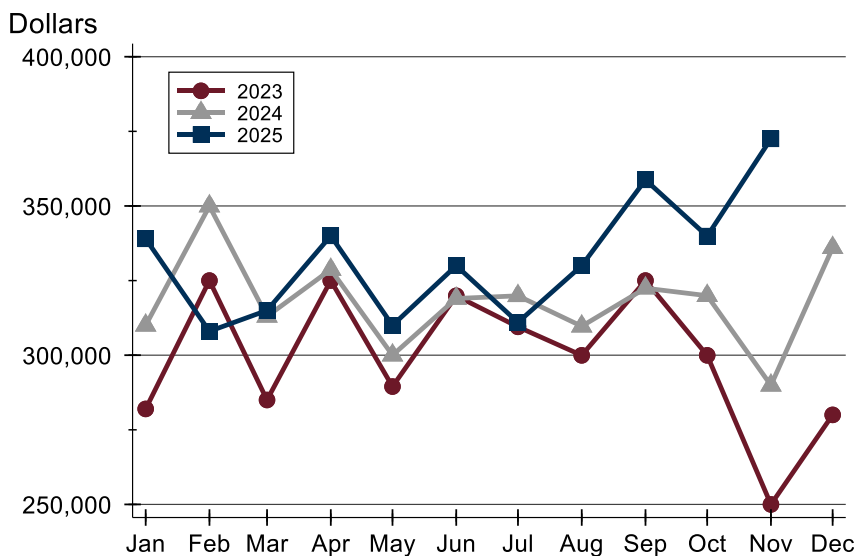
### City of Lawrence New Listings Analysis

#### Average Price



Month	2023	2024	2025
January	349,665	361,397	<b>373,534</b>
February	350,138	393,460	<b>371,070</b>
March	331,174	352,127	<b>396,268</b>
April	348,694	338,599	<b>419,880</b>
May	305,637	341,437	<b>360,126</b>
June	359,731	357,359	<b>381,194</b>
July	361,069	359,406	<b>370,775</b>
August	320,710	340,199	<b>398,141</b>
September	366,108	392,773	<b>412,750</b>
October	343,722	343,271	<b>395,806</b>
November	293,070	318,672	<b>396,588</b>
December	323,562	374,167	

#### Median Price



Month	2023	2024	2025
January	282,000	310,000	<b>339,000</b>
February	325,000	349,950	<b>308,000</b>
March	285,000	313,000	<b>315,000</b>
April	325,000	328,700	<b>340,000</b>
May	289,500	299,999	<b>310,000</b>
June	319,900	319,000	<b>330,000</b>
July	309,500	319,900	<b>311,000</b>
August	299,950	309,700	<b>330,000</b>
September	325,000	322,450	<b>358,750</b>
October	299,950	319,950	<b>339,900</b>
November	250,000	289,900	<b>372,500</b>
December	280,000	336,000	



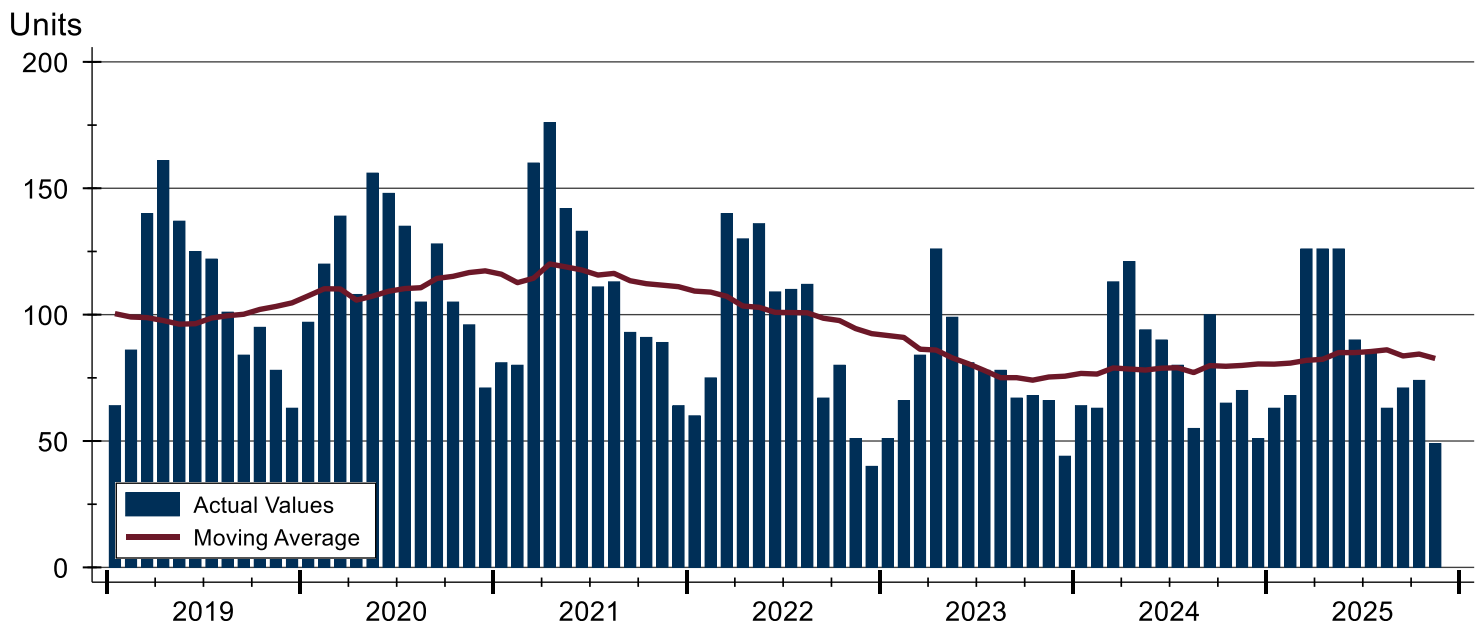
## City of Lawrence Contracts Written Analysis

Summary Statistics for Contracts Written		2025	November 2024	Change	2025	Year-to-Date 2024	Change
Contracts Written		49	70	-30.0%	941	915	2.8%
Volume (1,000s)		17,884	23,708	-24.6%	352,973	322,905	9.3%
Average	Sale Price	364,973	338,691	7.8%	375,105	352,901	6.3%
	Days on Market	34	42	-19.0%	24	25	-4.0%
	Percent of Original	98.2%	96.3%	2.0%	98.3%	98.4%	-0.1%
Median	Sale Price	325,000	302,950	7.3%	324,900	319,000	1.8%
	Days on Market	22	19	15.8%	7	7	0.0%
	Percent of Original	100.0%	98.8%	1.2%	100.0%	100.0%	0.0%

A total of 49 contracts for sale were written in the City of Lawrence during the month of November, down from 70 in 2024. The median list price of these homes was \$325,000, up from \$302,950 the prior year.

Half of the homes that went under contract in November were on the market less than 22 days, compared to 18 days in November 2024.

## History of Contracts Written





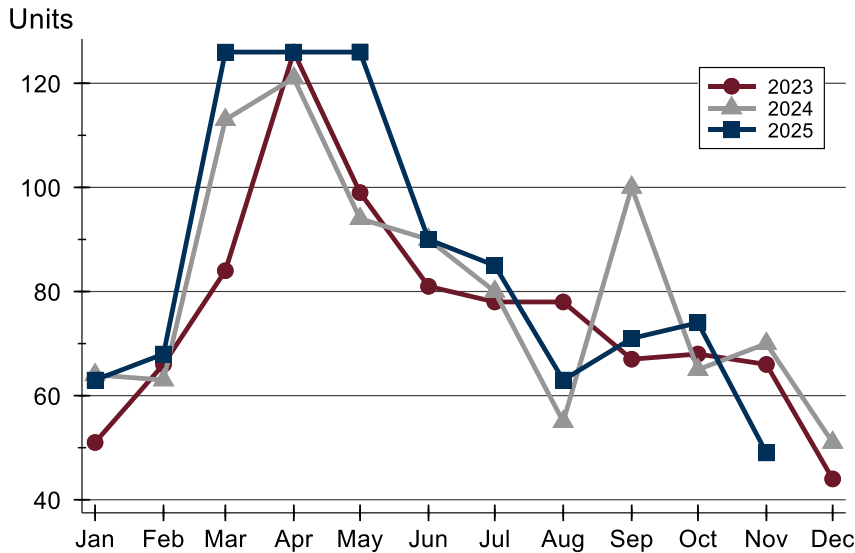
**November  
2025**

## Lawrence MLS Statistics



### City of Lawrence Contracts Written Analysis

#### Contracts Written by Month



Month	2023	2024	2025
January	51	64	63
February	66	63	68
March	84	113	126
April	126	121	126
May	99	94	126
June	81	90	90
July	78	80	85
August	78	55	63
September	67	100	71
October	68	65	74
November	66	70	49
December	44	51	

#### Contracts Written by Price Range

Price Range	Contracts Written Number	Percent	List Price Average	Median	Days on Market Avg.	Med.	Price as % of Orig. Avg.	Med.
Below \$50,000	0	0.0%	N/A	N/A	N/A	N/A	N/A	N/A
\$50,000-\$99,999	0	0.0%	N/A	N/A	N/A	N/A	N/A	N/A
\$100,000-\$149,999	2	4.1%	115,000	115,000	168	168	89.1%	89.1%
\$150,000-\$199,999	1	2.0%	178,000	178,000	52	52	88.9%	88.9%
\$200,000-\$249,999	4	8.2%	226,975	226,000	54	49	94.0%	93.4%
\$250,000-\$299,999	13	26.5%	271,835	274,900	21	15	99.5%	100.0%
\$300,000-\$349,999	9	18.4%	325,744	325,000	34	22	99.0%	100.0%
\$350,000-\$399,999	6	12.2%	380,850	383,600	25	26	99.2%	99.6%
\$400,000-\$449,999	2	4.1%	431,200	431,200	13	13	100.0%	100.0%
\$450,000-\$499,999	3	6.1%	489,600	489,900	27	34	100.0%	100.0%
\$500,000-\$599,999	5	10.2%	565,400	579,000	36	20	98.5%	100.0%
\$600,000-\$749,999	4	8.2%	664,738	659,475	17	12	99.4%	100.0%
\$750,000-\$999,999	0	0.0%	N/A	N/A	N/A	N/A	N/A	N/A
\$1,000,000 and up	0	0.0%	N/A	N/A	N/A	N/A	N/A	N/A





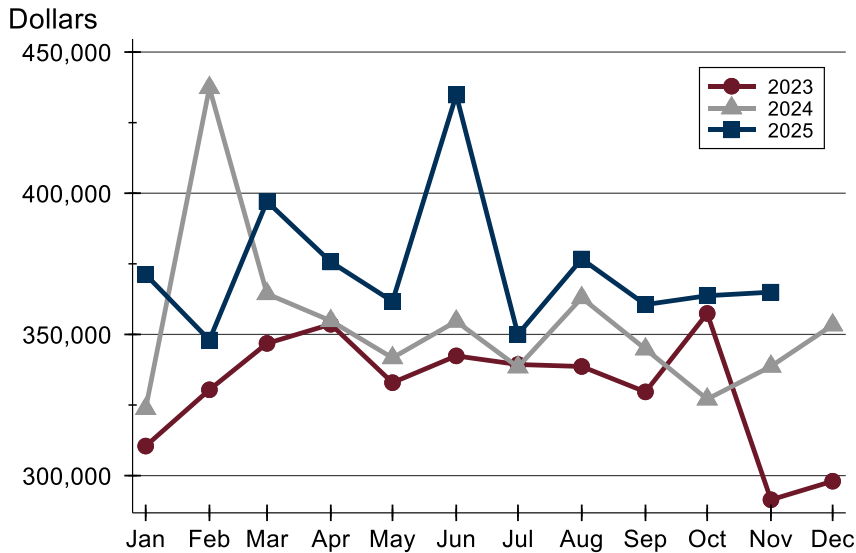
**November  
2025**

## Lawrence MLS Statistics



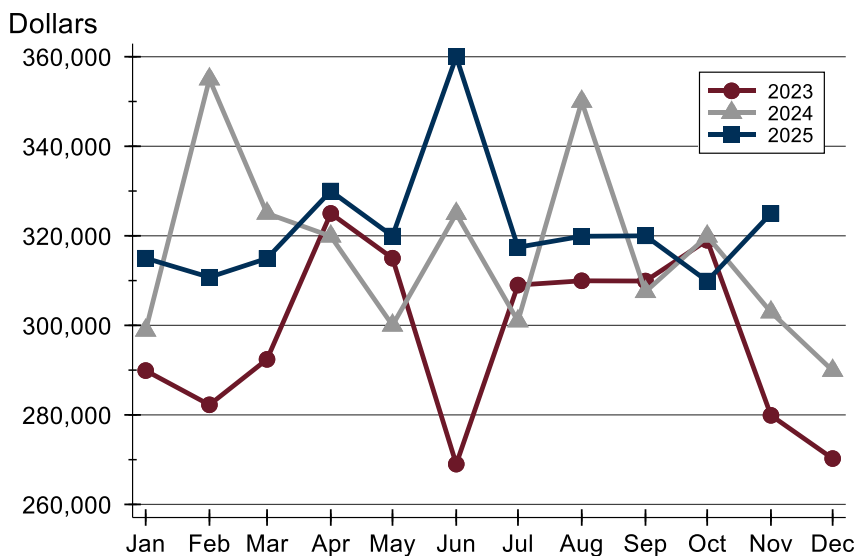
### City of Lawrence Contracts Written Analysis

#### Average Price



Month	2023	2024	2025
January	310,467	323,707	371,215
February	330,402	437,352	348,003
March	346,825	364,385	397,088
April	353,594	354,828	375,675
May	332,913	341,694	361,708
June	342,393	354,642	434,789
July	339,349	338,454	350,006
August	338,645	362,953	376,717
September	329,643	344,812	360,576
October	357,438	327,064	363,710
November	291,443	338,691	364,973
December	298,019	353,308	

#### Median Price



Month	2023	2024	2025
January	289,900	298,880	315,000
February	282,250	355,000	310,750
March	292,400	325,000	314,950
April	325,000	319,900	330,000
May	315,000	300,000	319,950
June	269,000	324,950	360,000
July	309,000	300,950	317,450
August	309,950	350,000	319,900
September	309,900	307,500	320,000
October	319,000	319,900	309,900
November	279,900	302,950	325,000
December	270,250	289,900	



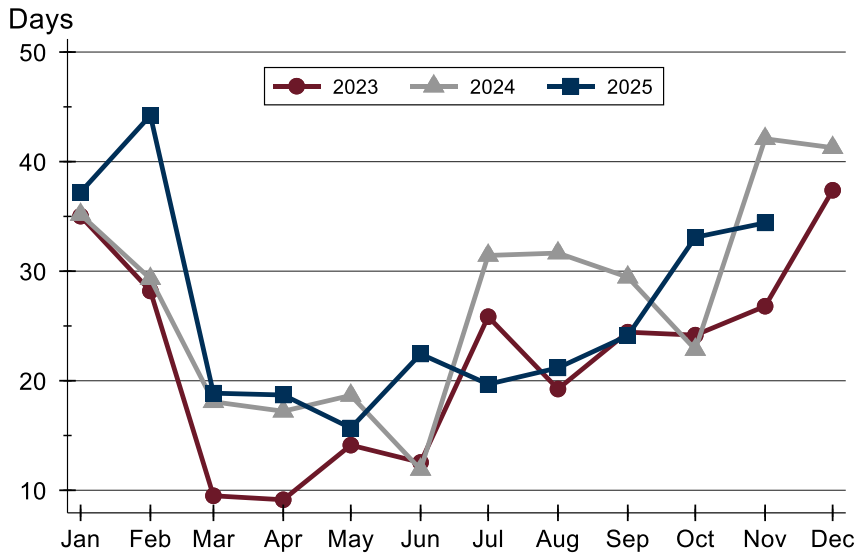
**November  
2025**

## Lawrence MLS Statistics



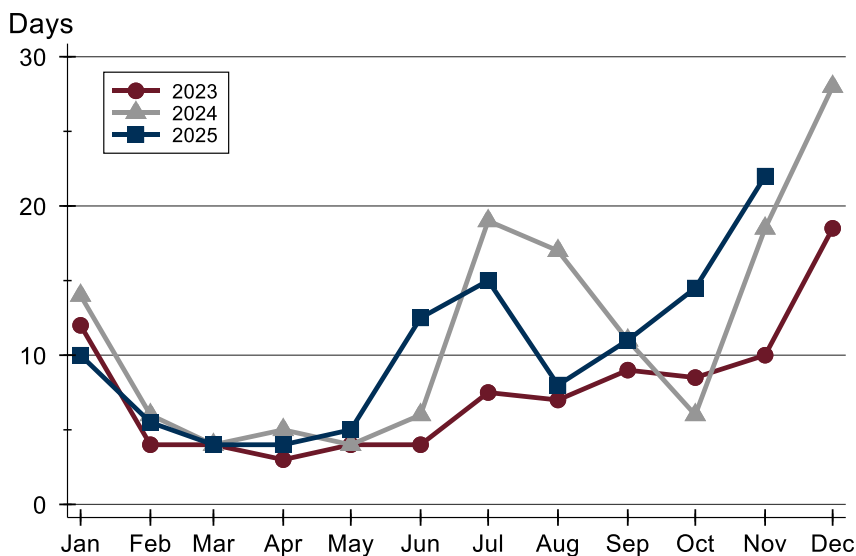
### City of Lawrence Contracts Written Analysis

#### Average DOM



Month	2023	2024	2025
January	35	35	37
February	28	29	44
March	10	18	19
April	9	17	19
May	14	19	16
June	13	12	22
July	26	31	20
August	19	32	21
September	24	29	24
October	24	23	33
November	27	42	34
December	37	41	

#### Median DOM



Month	2023	2024	2025
January	12	14	10
February	4	6	6
March	4	4	4
April	3	5	4
May	4	4	5
June	4	6	13
July	8	19	15
August	7	17	8
September	9	11	11
October	9	6	15
November	10	19	22
December	19	28	



**November  
2025**

## Lawrence MLS Statistics



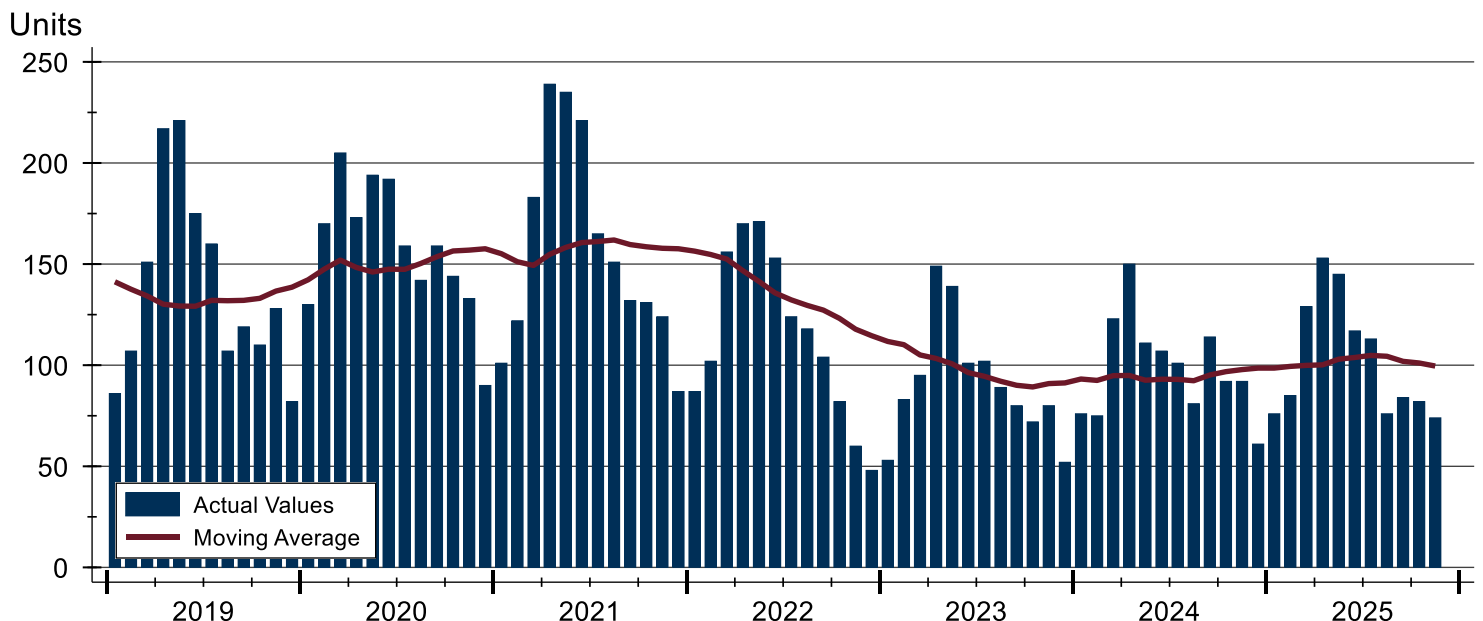
### City of Lawrence Pending Contracts Analysis

Summary Statistics for Pending Contracts		End of November		
		2025	2024	Change
Pending Contracts		<b>74</b>	92	-19.6%
Volume (1,000s)		<b>28,247</b>	33,492	-15.7%
Average	List Price	<b>381,714</b>	364,048	4.9%
	Days on Market	<b>38</b>	35	8.6%
	Percent of Original	<b>99.0%</b>	98.7%	0.3%
Median	List Price	<b>322,450</b>	324,450	-0.6%
	Days on Market	<b>22</b>	11	100.0%
	Percent of Original	<b>100.0%</b>	100.0%	0.0%

A total of 74 listings in the City of Lawrence had contracts pending at the end of November, down from 92 contracts pending at the end of November 2024.

Pending contracts reflect listings with a contract in place at the end of the month. In contrast, contracts written measures the number of listings put under contract during the month.

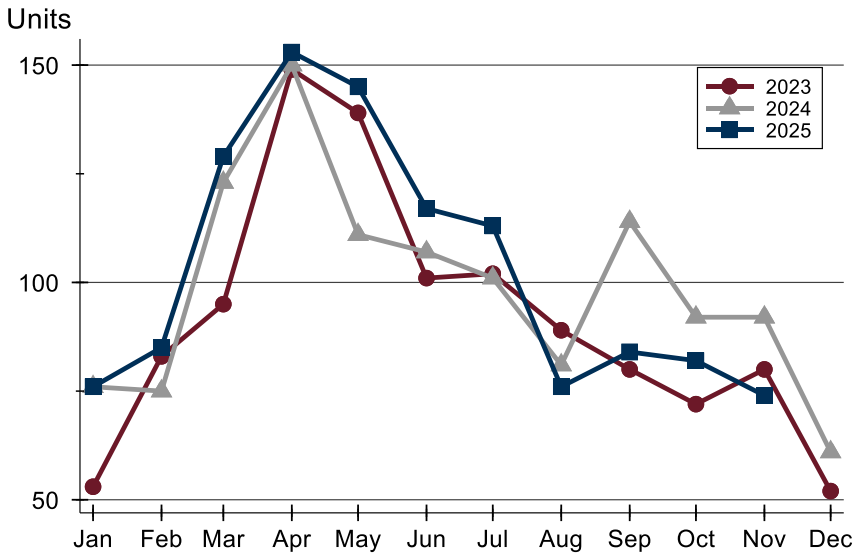
### History of Pending Contracts





## City of Lawrence Pending Contracts Analysis

### Pending Contracts by Month



Month	2023	2024	2025
January	53	76	76
February	83	75	85
March	95	123	129
April	149	150	153
May	139	111	145
June	101	107	117
July	102	101	113
August	89	81	76
September	80	114	84
October	72	92	82
November	80	92	74
December	52	61	

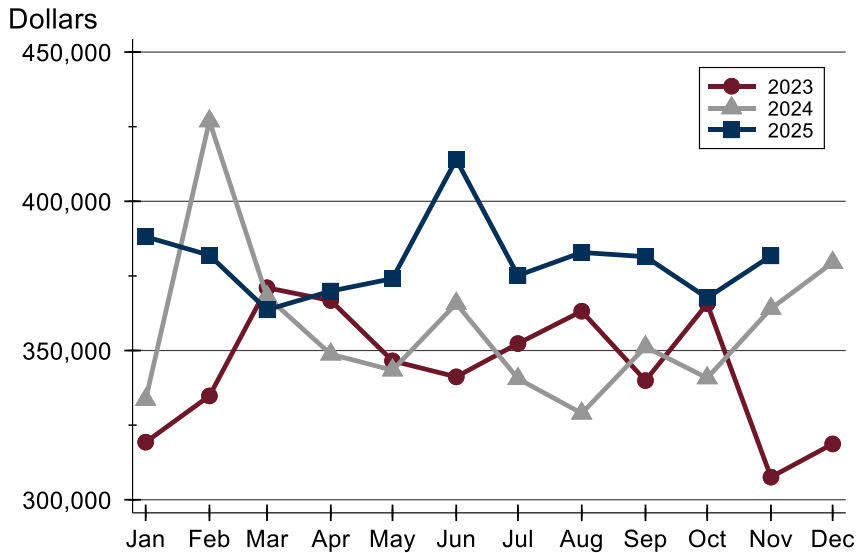
### Pending Contracts by Price Range

Price Range	Pending Contracts Number	Percent	List Price Average	Median	Days on Market Avg.	Med.	Price as % of Orig. Avg.	Med.
Below \$50,000	0	0.0%	N/A	N/A	N/A	N/A	N/A	N/A
\$50,000-\$99,999	0	0.0%	N/A	N/A	N/A	N/A	N/A	N/A
\$100,000-\$149,999	5	6.8%	121,370	115,000	58	15	95.3%	100.0%
\$150,000-\$199,999	3	4.1%	184,600	184,900	35	28	98.3%	100.0%
\$200,000-\$249,999	6	8.1%	228,800	230,950	40	27	96.0%	98.6%
\$250,000-\$299,999	19	25.7%	278,337	275,000	42	27	98.9%	100.0%
\$300,000-\$349,999	9	12.2%	326,844	325,000	33	22	99.4%	100.0%
\$350,000-\$399,999	8	10.8%	381,188	383,700	35	35	99.3%	100.0%
\$400,000-\$449,999	3	4.1%	423,800	419,900	9	8	100.0%	100.0%
\$450,000-\$499,999	6	8.1%	484,617	489,000	18	12	100.0%	100.0%
\$500,000-\$599,999	6	8.1%	558,667	564,500	30	20	99.1%	100.0%
\$600,000-\$749,999	7	9.5%	660,407	629,900	27	5	99.7%	100.0%
\$750,000-\$999,999	1	1.4%	879,900	879,900	155	155	97.8%	97.8%
\$1,000,000 and up	1	1.4%	1,399,999	1,399,999	176	176	121.7%	121.7%



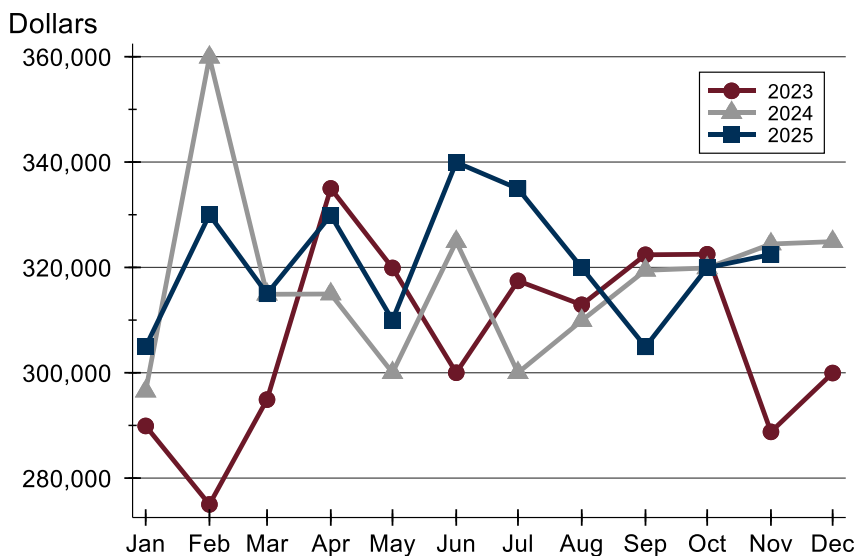
## City of Lawrence Pending Contracts Analysis

### Average Price



Month	2023	2024	2025
January	319,303	333,556	388,137
February	334,790	426,894	381,923
March	371,024	368,083	363,646
April	366,757	348,759	369,918
May	346,540	343,428	374,093
June	341,180	365,760	413,985
July	352,339	340,577	375,138
August	363,178	328,967	382,863
September	339,931	351,206	381,444
October	365,678	340,800	367,657
November	307,588	364,048	381,714
December	318,710	379,455	

### Median Price

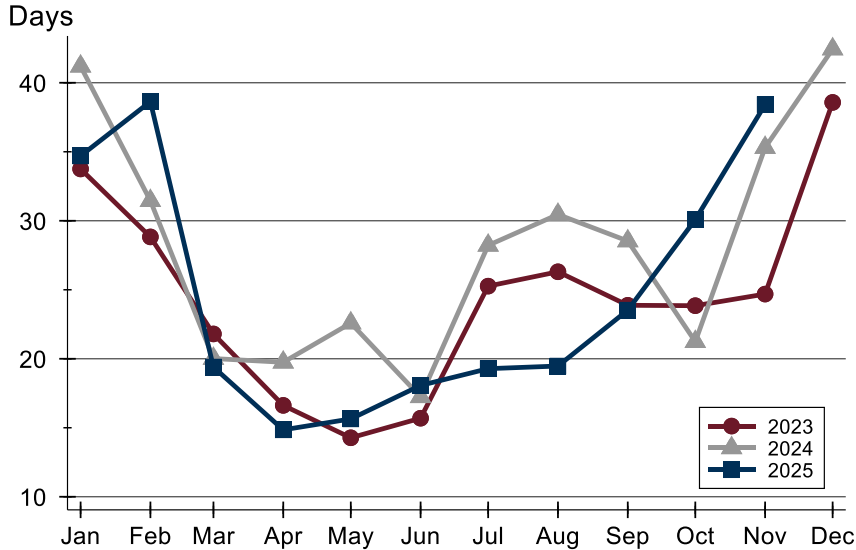


Month	2023	2024	2025
January	289,900	296,500	304,950
February	275,000	359,900	330,000
March	294,900	314,900	315,000
April	335,000	314,950	329,900
May	319,900	300,000	310,000
June	300,000	324,900	339,950
July	317,450	300,000	334,950
August	312,900	309,900	319,950
September	322,400	319,450	304,925
October	322,500	319,900	319,950
November	288,775	324,450	322,450
December	299,950	324,900	



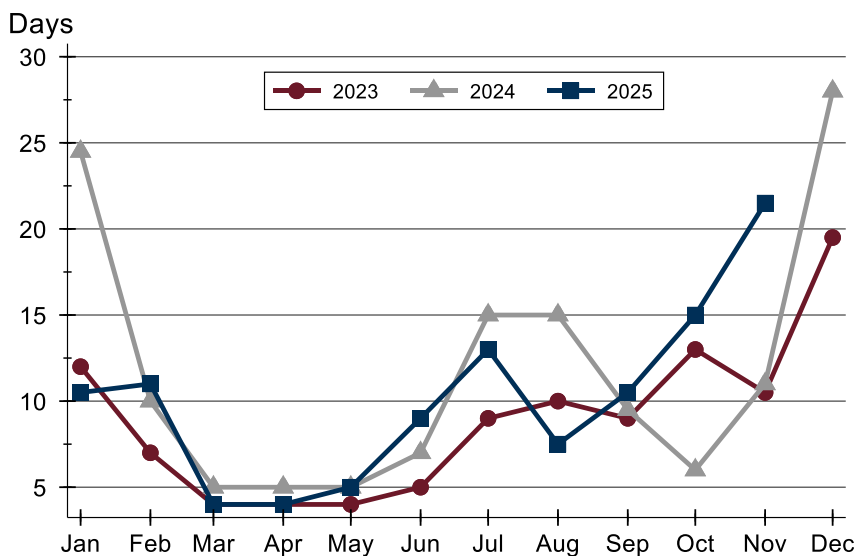
## City of Lawrence Pending Contracts Analysis

### Average DOM



Month	2023	2024	2025
January	34	41	35
February	29	31	39
March	22	20	19
April	17	20	15
May	14	23	16
June	16	17	18
July	25	28	19
August	26	30	19
September	24	29	24
October	24	21	30
November	25	35	38
December	39	42	

### Median DOM



Month	2023	2024	2025
January	12	25	11
February	7	10	11
March	4	5	4
April	4	5	4
May	4	5	5
June	5	7	9
July	9	15	13
August	10	15	8
September	9	10	11
October	13	6	15
November	11	11	22
December	20	28	