



**June  
2022**

# Lawrence MLS Statistics



## City of Lawrence Housing Report



### Market Overview

#### City of Lawrence Home Sales Fell in June

Total home sales in the City of Lawrence fell last month to 128 units, compared to 148 units in June 2021. Total sales volume was \$45.2 million, down from a year earlier.

The median sale price in June was \$301,750, up from \$270,000 a year earlier. Homes that sold in June were typically on the market for 3 days and sold for 102.9% of their list prices.

#### City of Lawrence Active Listings Up at End of June

The total number of active listings in the City of Lawrence at the end of June was 127 units, up from 98 at the same point in 2021. This represents a 1.2 months' supply of homes available for sale. The median list price of homes on the market at the end of June was \$329,900.

During June, a total of 108 contracts were written down from 124 in June 2021. At the end of the month, there were 153 contracts still pending.

### Report Contents

- Summary Statistics – Page 2
- Closed Listing Analysis – Page 3
- Active Listings Analysis – Page 7
- Months' Supply Analysis – Page 11
- New Listings Analysis – Page 12
- Contracts Written Analysis – Page 15
- Pending Contracts Analysis – Page 19

### Contact Information

Rob Hulse, Executive Vice-President  
 Lawrence Board of REALTORS®  
 3838 W. 6th Street (at Monterey)  
 Lawrence, KS 66049  
 685-842-1843  
[Rob@LawrenceRealtor.com](mailto:Rob@LawrenceRealtor.com)  
[www.LawrenceRealtor.com](http://www.LawrenceRealtor.com)



**June  
2022**

# Lawrence MLS Statistics



LAWRENCE  
Board of REALTORS®

## City of Lawrence Summary Statistics

June MLS Statistics Three-year History		Current Month			Year-to-Date		
		2022	2021	2020	2022	2021	2020
<b>Home Sales</b> Change from prior year		<b>128</b> -13.5%	<b>148</b> -3.3%	<b>153</b> -3.8%	<b>568</b> -7.8%	<b>616</b> -1.0%	<b>622</b> 7.2%
<b>Active Listings</b> Change from prior year		<b>127</b> 29.6%	<b>98</b> -41.0%	<b>166</b> -43.3%	<b>N/A</b>	<b>N/A</b>	<b>N/A</b>
<b>Months' Supply</b> Change from prior year		<b>1.2</b> 33.3%	<b>0.9</b> -43.8%	<b>1.6</b> -48.4%	<b>N/A</b>	<b>N/A</b>	<b>N/A</b>
<b>New Listings</b> Change from prior year		<b>163</b> -0.6%	<b>164</b> 5.8%	<b>155</b> -20.1%	<b>752</b> -9.5%	<b>831</b> -2.8%	<b>855</b> -11.3%
<b>Contracts Written</b> Change from prior year		<b>108</b> -12.9%	<b>124</b> -13.9%	<b>144</b> 17.1%	<b>634</b> -14.6%	<b>742</b> 0.7%	<b>737</b> 5.7%
<b>Pending Contracts</b> Change from prior year		<b>153</b> -30.8%	<b>221</b> 15.1%	<b>192</b> 9.7%	<b>N/A</b>	<b>N/A</b>	<b>N/A</b>
<b>Sales Volume (1,000s)</b> Change from prior year		<b>45,247</b> -0.2%	<b>45,328</b> 17.3%	<b>38,631</b> -5.6%	<b>189,469</b> 3.3%	<b>183,441</b> 19.0%	<b>154,137</b> 9.9%
Average	<b>Sale Price</b> Change from prior year	<b>353,489</b> 15.4%	<b>306,274</b> 21.3%	<b>252,488</b> -1.9%	<b>333,572</b> 12.0%	<b>297,793</b> 20.2%	<b>247,809</b> 2.5%
	<b>List Price of Actives</b> Change from prior year	<b>331,603</b> -5.8%	<b>351,923</b> -4.7%	<b>369,250</b> 12.7%	<b>N/A</b>	<b>N/A</b>	<b>N/A</b>
	<b>Days on Market</b> Change from prior year	<b>10</b> 25.0%	<b>8</b> -76.5%	<b>34</b> -10.5%	<b>14</b> -22.2%	<b>18</b> -51.4%	<b>37</b> 0.0%
	<b>Percent of List</b> Change from prior year	<b>104.0%</b> 1.0%	<b>103.0%</b> 3.1%	<b>99.9%</b> 0.5%	<b>102.9%</b> 0.9%	<b>102.0%</b> 2.8%	<b>99.2%</b> 0.1%
	<b>Percent of Original</b> Change from prior year	<b>103.6%</b> 1.1%	<b>102.5%</b> 3.9%	<b>98.7%</b> 0.3%	<b>102.6%</b> 1.0%	<b>101.6%</b> 3.6%	<b>98.1%</b> -0.1%
Median	<b>Sale Price</b> Change from prior year	<b>301,750</b> 11.8%	<b>270,000</b> 13.2%	<b>238,500</b> 4.6%	<b>300,000</b> 13.3%	<b>264,900</b> 16.2%	<b>228,000</b> 7.2%
	<b>List Price of Actives</b> Change from prior year	<b>329,900</b> 5.2%	<b>313,700</b> -2.7%	<b>322,450</b> 11.2%	<b>N/A</b>	<b>N/A</b>	<b>N/A</b>
	<b>Days on Market</b> Change from prior year	<b>3</b> 0.0%	<b>3</b> -62.5%	<b>8</b> -20.0%	<b>3</b> 0.0%	<b>3</b> -62.5%	<b>8</b> -27.3%
	<b>Percent of List</b> Change from prior year	<b>102.9%</b> 1.3%	<b>101.6%</b> 1.6%	<b>100.0%</b> 0.0%	<b>100.1%</b> 0.1%	<b>100.0%</b> 0.0%	<b>100.0%</b> 0.0%
	<b>Percent of Original</b> Change from prior year	<b>102.8%</b> 1.5%	<b>101.3%</b> 1.3%	<b>100.0%</b> 0.0%	<b>100.1%</b> 0.1%	<b>100.0%</b> 0.0%	<b>100.0%</b> 0.0%

Note: Year-to-date statistics cannot be calculated for Active Listings, Months' Supply and Pending Contracts.



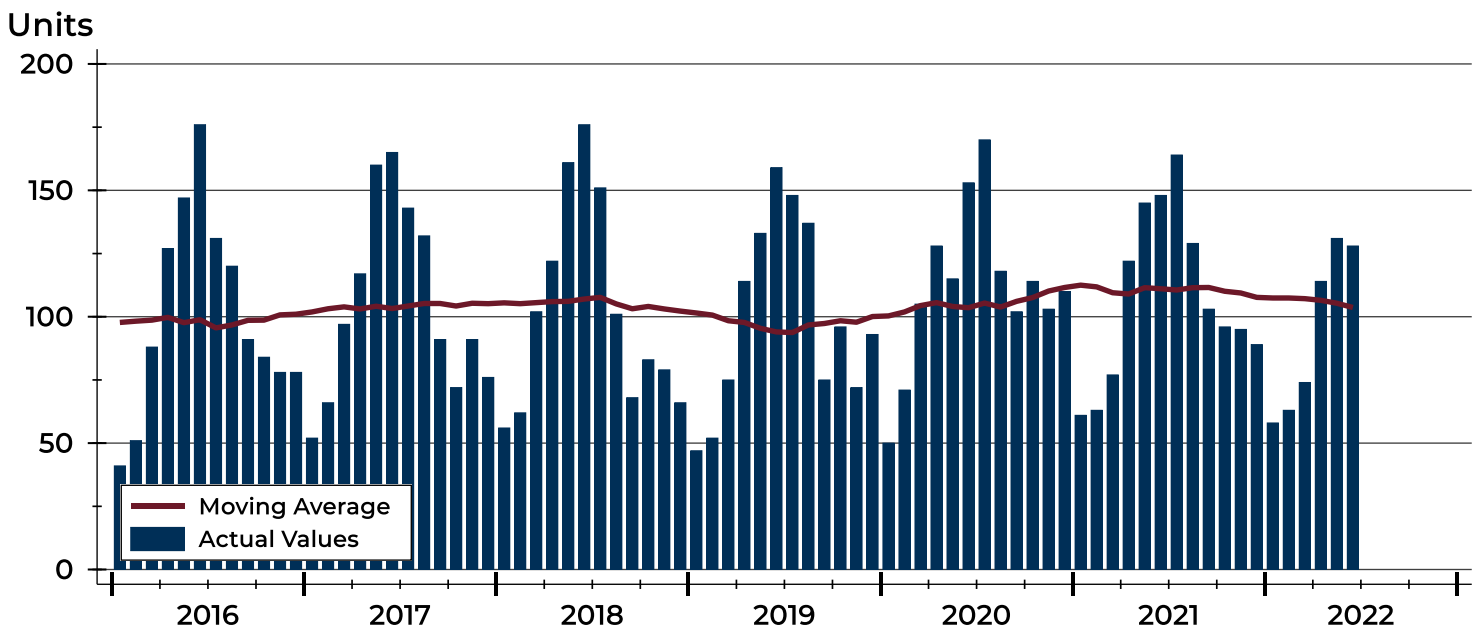
## City of Lawrence Closed Listings Analysis

Summary Statistics for Closed Listings		2022	June 2021	Change	2022	Year-to-Date 2021	Change
Closed Listings		<b>128</b>	148	-13.5%	<b>568</b>	616	-7.8%
Volume (1,000s)		<b>45,247</b>	45,328	-0.2%	<b>189,469</b>	183,441	3.3%
Months' Supply		<b>1.2</b>	0.9	33.3%	<b>N/A</b>	N/A	N/A
Average	Sale Price	<b>353,489</b>	306,274	15.4%	<b>333,572</b>	297,793	12.0%
	Days on Market	<b>10</b>	8	25.0%	<b>14</b>	18	-22.2%
	Percent of List	<b>104.0%</b>	103.0%	1.0%	<b>102.9%</b>	102.0%	0.9%
	Percent of Original	<b>103.6%</b>	102.5%	1.1%	<b>102.6%</b>	101.6%	1.0%
Median	Sale Price	<b>301,750</b>	270,000	11.8%	<b>300,000</b>	264,900	13.3%
	Days on Market	<b>3</b>	3	0.0%	<b>3</b>	3	0.0%
	Percent of List	<b>102.9%</b>	101.6%	1.3%	<b>100.1%</b>	100.0%	0.1%
	Percent of Original	<b>102.8%</b>	101.3%	1.5%	<b>100.1%</b>	100.0%	0.1%

A total of 128 homes sold in the City of Lawrence in June, down from 148 units in June 2021. Total sales volume fell to \$45.2 million compared to \$45.3 million in the previous year.

The median sales price in June was \$301,750, up 11.8% compared to the prior year. Median days on market was 3 days, the same as May, and as June 2021.

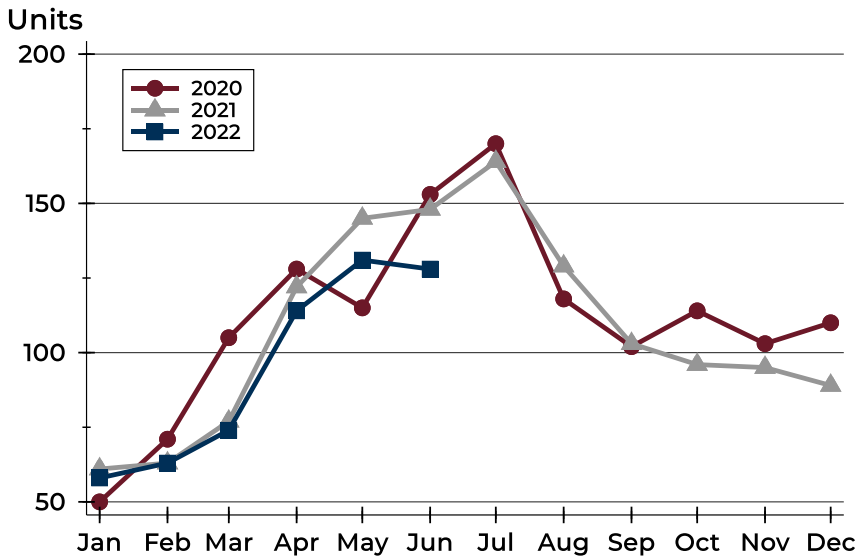
## History of Closed Listings





## City of Lawrence Closed Listings Analysis

### Closed Listings by Month



Month	2020	2021	2022
January	50	61	<b>58</b>
February	71	63	<b>63</b>
March	105	77	<b>74</b>
April	128	122	<b>114</b>
May	115	145	<b>131</b>
June	153	148	<b>128</b>
July	170	164	
August	118	129	
September	102	103	
October	114	96	
November	103	95	
December	110	89	

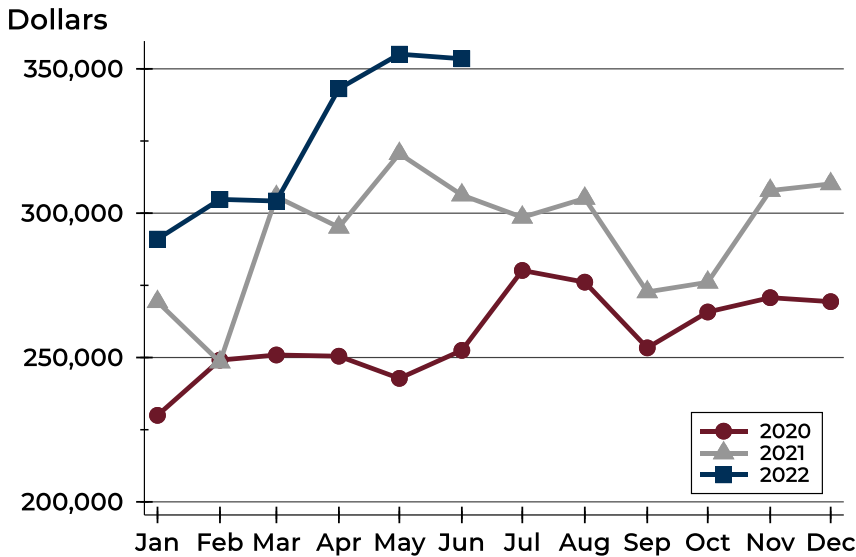
### Closed Listings by Price Range

Price Range	Sales		Months' Supply	Sale Price		Days on Market		Price as % of List		Price as % of Orig.	
	Number	Percent		Average	Median	Avg.	Med.	Avg.	Med.	Avg.	Med.
Below \$50,000	0	0.0%	N/A	N/A	N/A	N/A	N/A	N/A	N/A	N/A	N/A
\$50,000-\$99,999	1	0.8%	2.9	85,000	85,000	4	4	94.4%	94.4%	94.4%	94.4%
\$100,000-\$149,999	2	1.6%	1.0	136,250	136,250	18	18	97.5%	97.5%	96.0%	96.0%
\$150,000-\$199,999	14	10.9%	1.0	179,650	180,750	13	4	106.1%	105.6%	106.1%	105.6%
\$200,000-\$249,999	19	14.8%	0.5	225,950	229,900	5	3	105.2%	102.9%	105.2%	103.7%
\$250,000-\$299,999	26	20.3%	0.8	271,453	275,000	7	3	105.2%	104.5%	105.0%	104.3%
\$300,000-\$349,999	12	9.4%	1.1	316,808	312,500	6	4	106.0%	104.0%	105.7%	104.0%
\$350,000-\$399,999	16	12.5%	1.2	378,225	379,450	18	4	104.3%	101.4%	103.5%	102.0%
\$400,000-\$449,999	7	5.5%	1.7	417,286	420,000	4	2	103.4%	103.7%	102.7%	103.7%
\$450,000-\$499,999	10	7.8%	1.5	475,850	481,999	6	4	102.4%	100.9%	102.4%	100.9%
\$500,000-\$599,999	8	6.3%	2.4	540,063	522,500	16	4	101.5%	100.0%	101.0%	100.0%
\$600,000-\$749,999	8	6.3%	2.2	655,105	647,950	19	11	102.1%	100.8%	101.3%	100.8%
\$750,000-\$999,999	5	3.9%	1.6	785,800	760,000	19	28	98.0%	100.0%	96.1%	100.0%
\$1,000,000 and up	0	0.0%	N/A	N/A	N/A	N/A	N/A	N/A	N/A	N/A	N/A



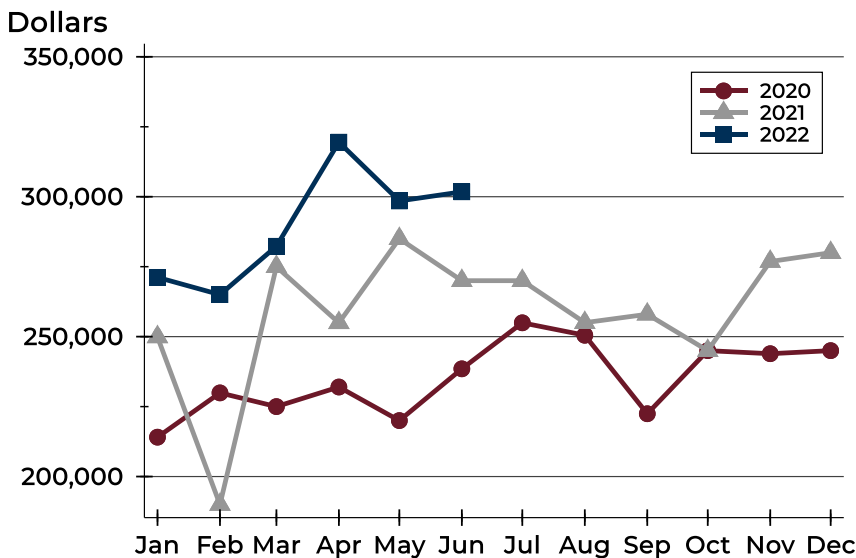
# City of Lawrence Closed Listings Analysis

## Average Price



Month	2020	2021	2022
January	229,973	269,320	<b>291,023</b>
February	249,106	248,417	<b>304,787</b>
March	250,879	305,705	<b>304,215</b>
April	250,466	295,115	<b>343,096</b>
May	242,777	320,621	<b>355,088</b>
June	252,488	306,274	<b>353,489</b>
July	280,164	298,573	
August	276,104	305,107	
September	253,345	272,728	
October	265,768	276,053	
November	270,728	307,845	
December	269,355	310,146	

## Median Price

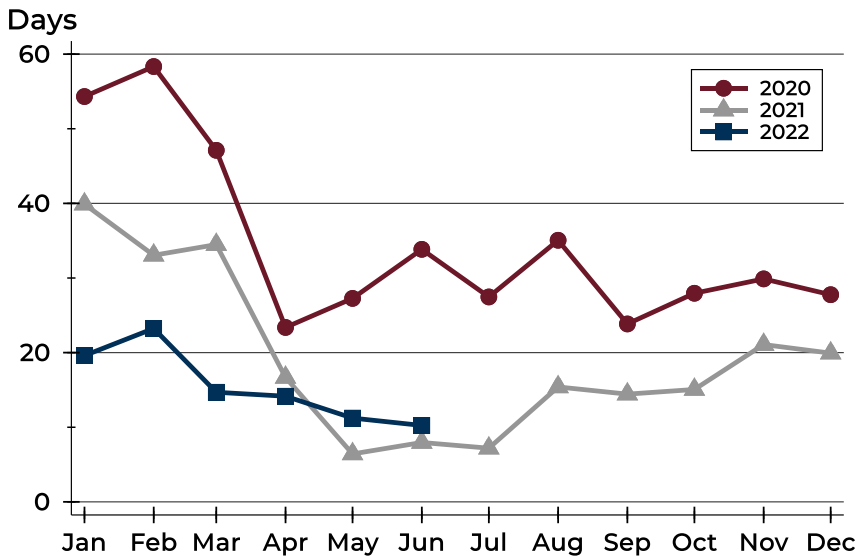


Month	2020	2021	2022
January	214,075	249,900	<b>271,200</b>
February	229,900	190,000	<b>265,000</b>
March	225,000	275,000	<b>282,300</b>
April	232,000	254,950	<b>319,500</b>
May	220,000	285,000	<b>298,485</b>
June	238,500	270,000	<b>301,750</b>
July	254,950	270,000	
August	250,500	255,000	
September	222,450	258,000	
October	245,000	245,000	
November	243,900	276,850	
December	245,000	280,000	



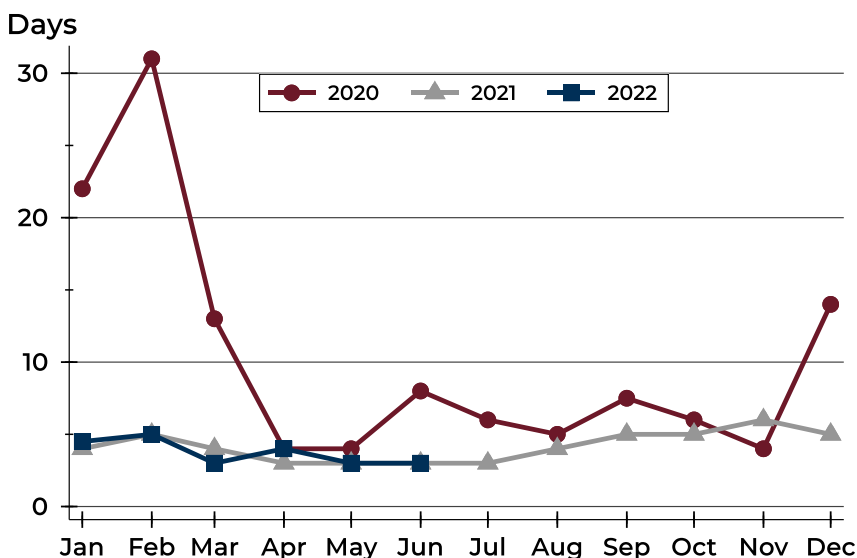
## City of Lawrence Closed Listings Analysis

### Average DOM



Month	2020	2021	2022
January	54	40	20
February	58	33	23
March	47	34	15
April	23	17	14
May	27	6	11
June	34	8	10
July	27	7	
August	35	15	
September	24	14	
October	28	15	
November	30	21	
December	28	20	

### Median DOM



Month	2020	2021	2022
January	22	4	5
February	31	5	5
March	13	4	3
April	4	3	4
May	4	3	3
June	8	3	3
July	6	3	
August	5	4	
September	8	5	
October	6	5	
November	4	6	
December	14	5	



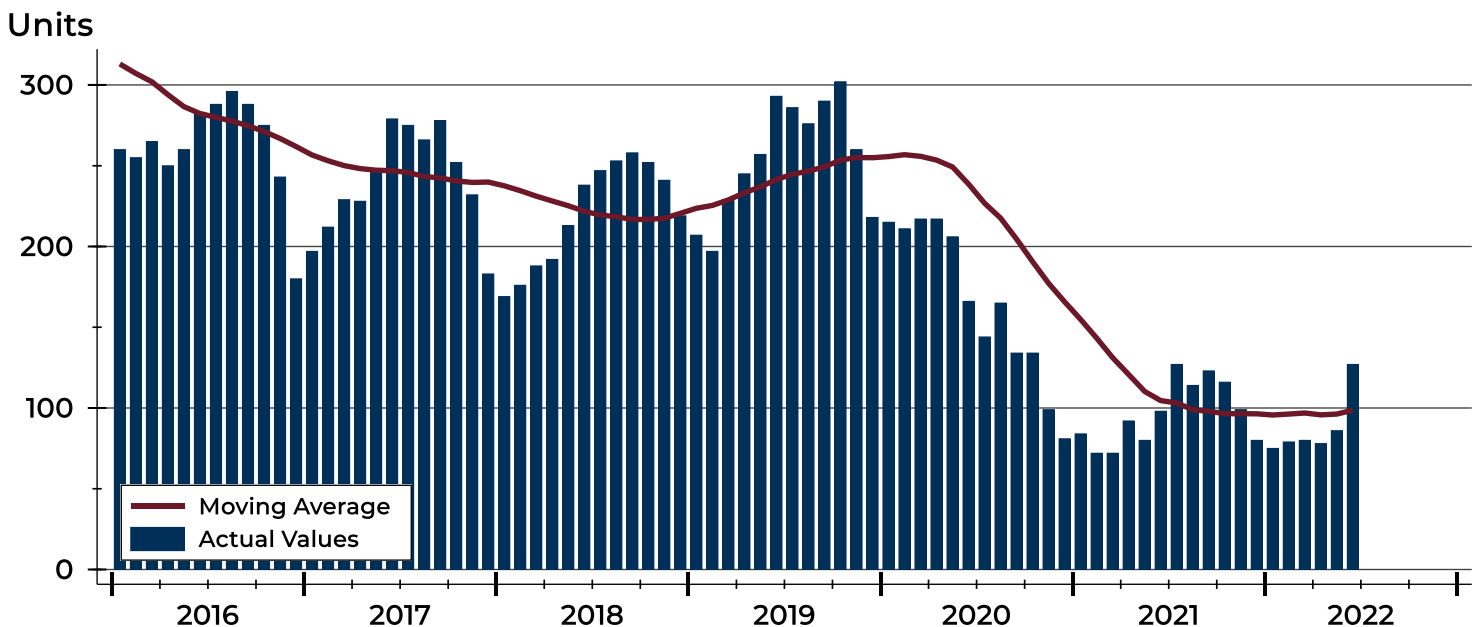
# City of Lawrence Active Listings Analysis

Summary Statistics for Active Listings		2022	End of June 2021	Change
Active Listings		127	98	29.6%
Volume (1,000s)		42,114	34,488	22.1%
Months' Supply		1.2	0.9	33.3%
Average	List Price	331,603	351,923	-5.8%
	Days on Market	29	49	-40.8%
	Percent of Original	98.6%	98.1%	0.5%
Median	List Price	329,900	313,700	5.2%
	Days on Market	17	24	-29.2%
	Percent of Original	100.0%	100.0%	0.0%

A total of 127 homes were available for sale in the City of Lawrence at the end of June. This represents a 1.2 months' supply of active listings.

The median list price of homes on the market at the end of June was \$329,900, up 5.2% from 2021. The typical time on market for active listings was 17 days, down from 24 days a year earlier.

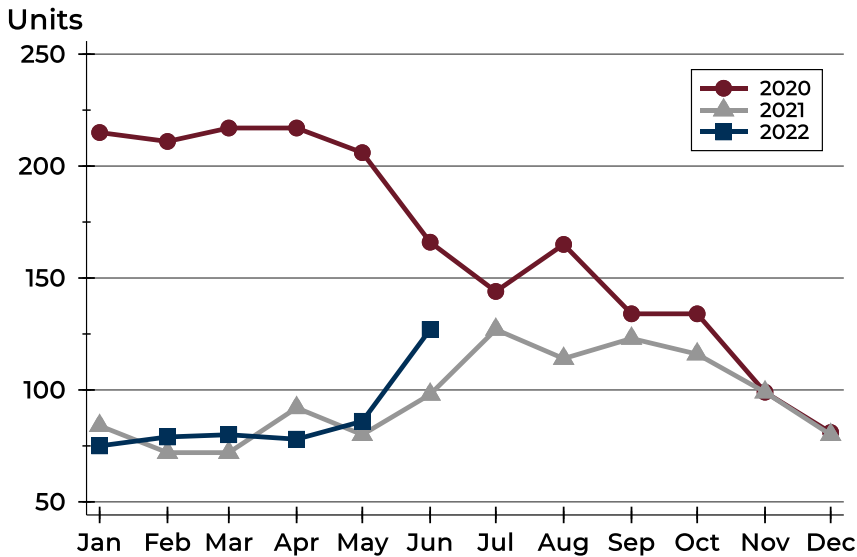
## History of Active Listings





## City of Lawrence Active Listings Analysis

### Active Listings by Month



Month	2020	2021	2022
January	215	84	<b>75</b>
February	211	72	<b>79</b>
March	217	72	<b>80</b>
April	217	92	<b>78</b>
May	206	80	<b>86</b>
June	166	98	<b>127</b>
July	144	127	
August	165	114	
September	134	123	
October	134	116	
November	99	99	
December	81	80	

### Active Listings by Price Range

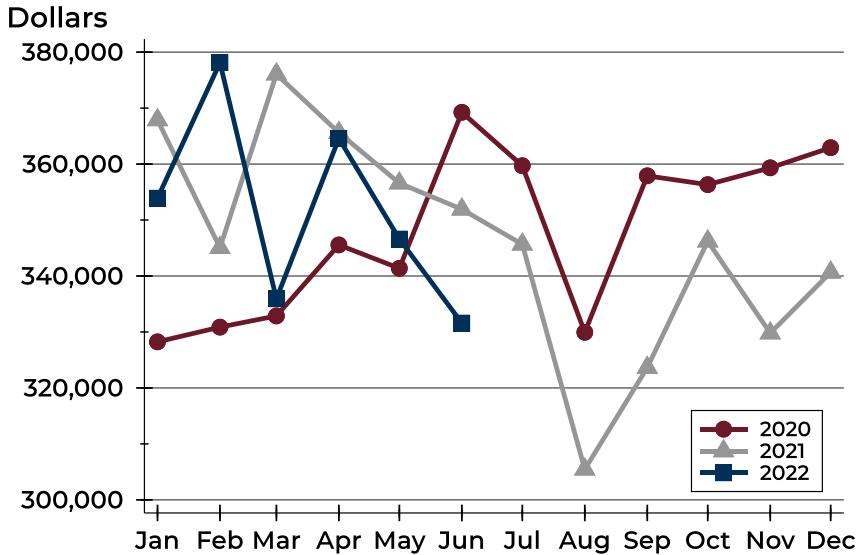
Price Range	Active Listings		Months' Supply	List Price		Days on Market		Price as % of Orig.	
	Number	Percent		Average	Median	Avg.	Med.	Avg.	Med.
Below \$50,000	9	7.1%	N/A	1,407	1,150	26	29	99.0%	100.0%
\$50,000-\$99,999	6	4.7%	2.9	89,904	91,975	45	19	94.4%	99.1%
\$100,000-\$149,999	6	4.7%	1.0	128,600	127,900	42	23	94.7%	98.5%
\$150,000-\$199,999	14	11.0%	1.0	174,543	172,450	15	9	98.1%	100.0%
\$200,000-\$249,999	9	7.1%	0.5	228,561	229,900	29	11	99.7%	100.0%
\$250,000-\$299,999	14	11.0%	0.8	269,096	269,900	13	9	98.9%	100.0%
\$300,000-\$349,999	14	11.0%	1.1	332,900	340,000	23	28	99.5%	100.0%
\$350,000-\$399,999	11	8.7%	1.2	379,391	379,900	34	33	100.4%	100.0%
\$400,000-\$449,999	13	10.2%	1.7	430,238	425,000	19	11	98.5%	100.0%
\$450,000-\$499,999	8	6.3%	1.5	474,013	474,700	44	33	99.6%	100.0%
\$500,000-\$599,999	15	11.8%	2.4	560,073	565,000	29	28	98.5%	100.0%
\$600,000-\$749,999	6	4.7%	2.2	677,283	674,500	84	36	98.0%	100.0%
\$750,000-\$999,999	2	1.6%	1.6	919,000	919,000	14	14	98.2%	98.2%
\$1,000,000 and up	0	0.0%	N/A	N/A	N/A	N/A	N/A	N/A	N/A





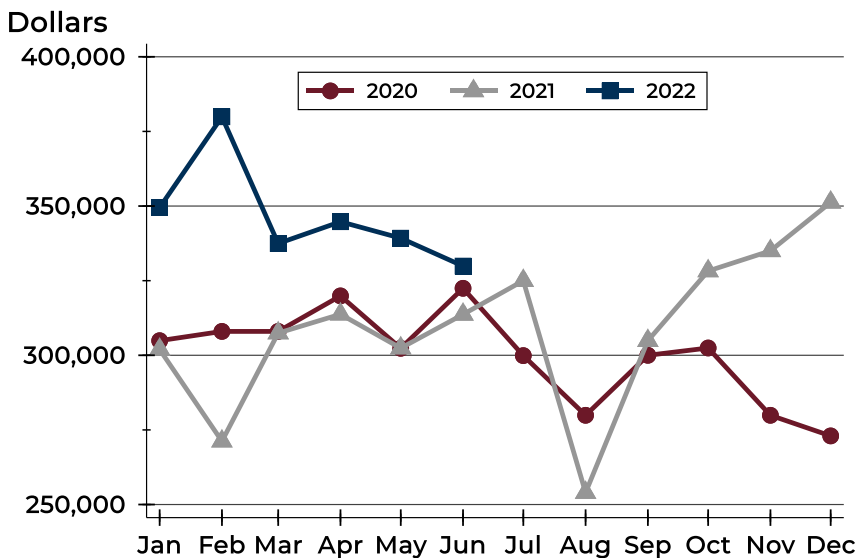
# City of Lawrence Active Listings Analysis

## Average Price



Month	2020	2021	2022
January	328,240	367,887	<b>353,910</b>
February	330,864	345,051	<b>378,114</b>
March	332,866	376,063	<b>335,920</b>
April	345,557	365,613	<b>364,571</b>
May	341,378	356,591	<b>346,614</b>
June	369,250	351,923	<b>331,603</b>
July	359,709	345,664	
August	329,944	305,460	
September	357,903	323,634	
October	356,330	346,221	
November	359,334	329,796	
December	362,929	340,652	

## Median Price

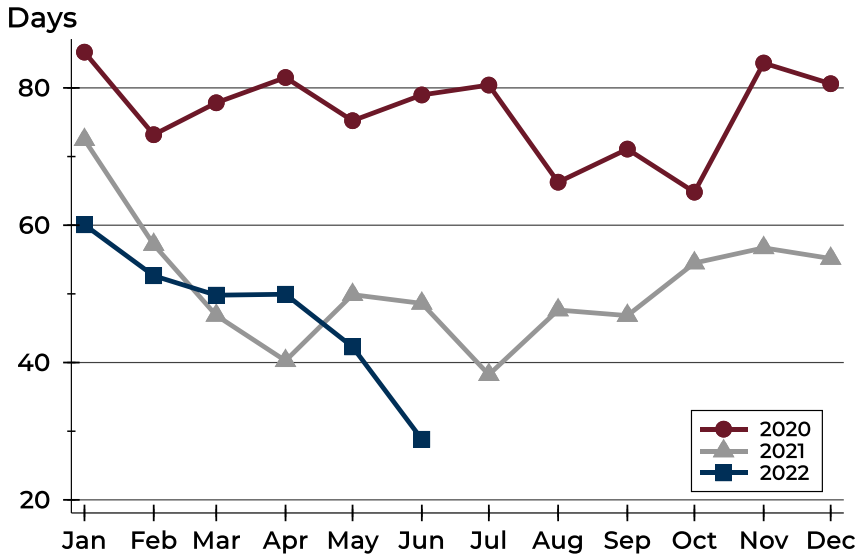


Month	2020	2021	2022
January	304,900	301,950	<b>349,500</b>
February	308,000	271,225	<b>379,900</b>
March	308,000	307,450	<b>337,450</b>
April	319,900	313,750	<b>344,750</b>
May	302,350	302,400	<b>339,250</b>
June	322,450	313,700	<b>329,900</b>
July	299,900	325,000	
August	279,900	254,000	
September	300,000	304,900	
October	302,450	328,250	
November	279,900	335,000	
December	273,000	351,250	



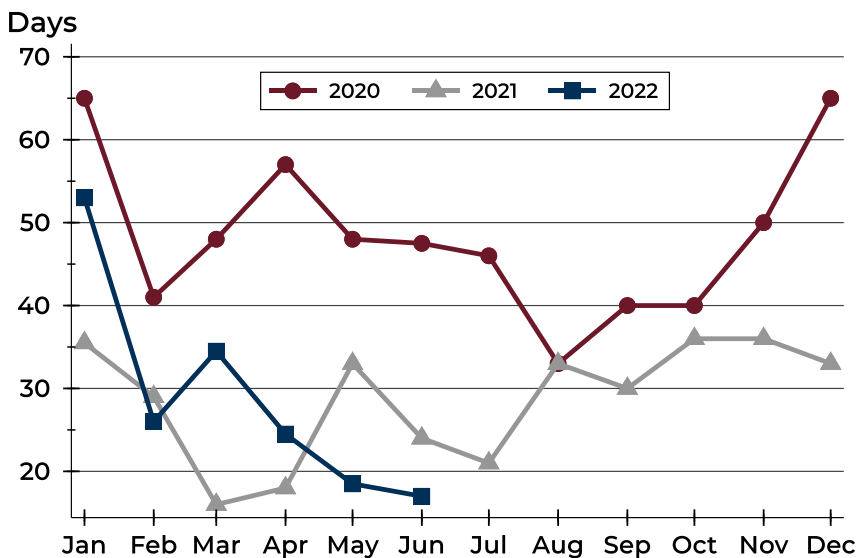
## City of Lawrence Active Listings Analysis

### Average DOM



Month	2020	2021	2022
January	85	72	60
February	73	57	53
March	78	47	50
April	82	40	50
May	75	50	42
June	79	49	29
July	80	38	
August	66	48	
September	71	47	
October	65	54	
November	84	57	
December	81	55	

### Median DOM

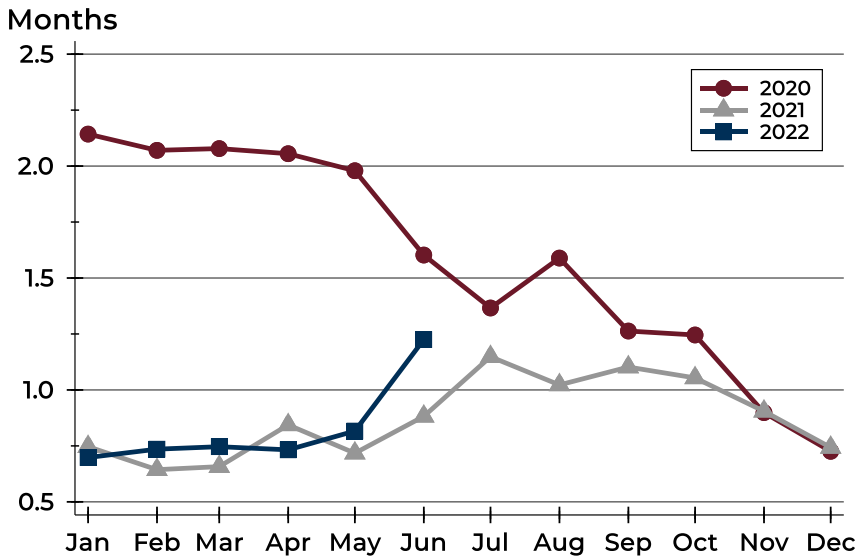


Month	2020	2021	2022
January	65	36	53
February	41	29	26
March	48	16	35
April	57	18	25
May	48	33	19
June	48	24	17
July	46	21	
August	33	33	
September	40	30	
October	40	36	
November	50	36	
December	65	33	



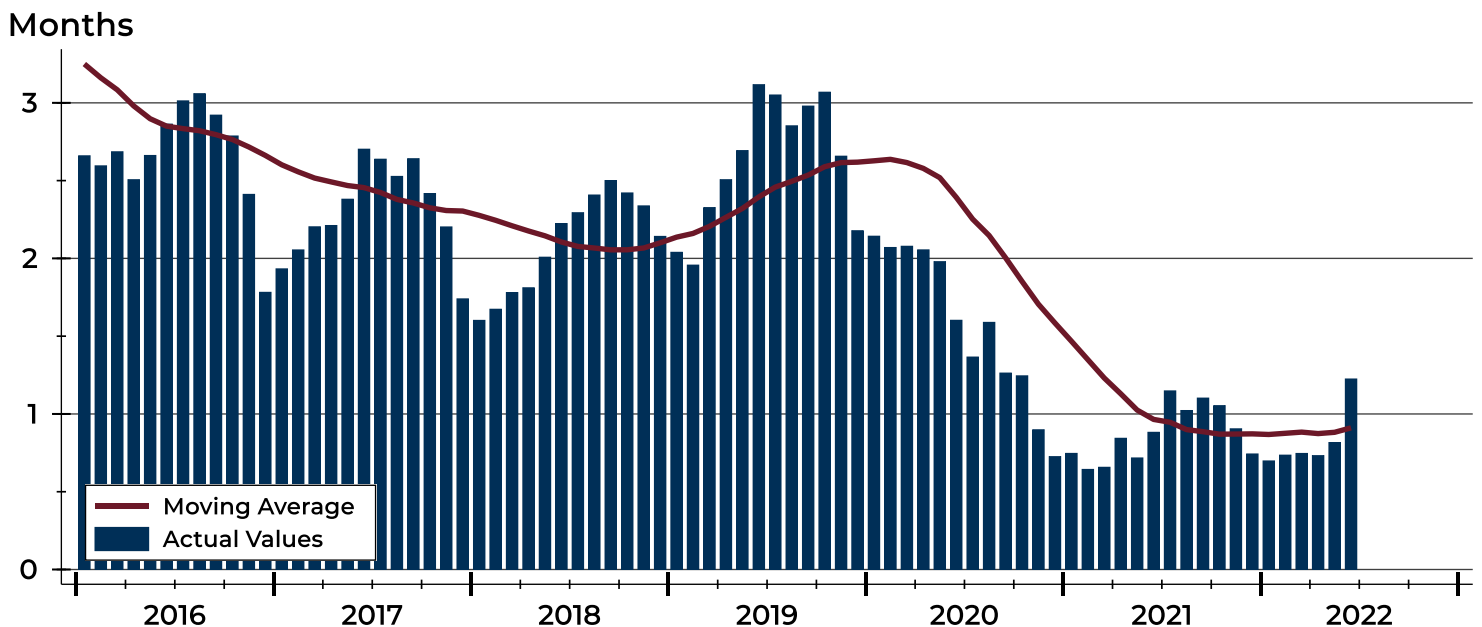
# City of Lawrence Months' Supply Analysis

## Months' Supply by Month



Month	2020	2021	2022
January	2.1	0.7	<b>0.7</b>
February	2.1	0.6	<b>0.7</b>
March	2.1	0.7	<b>0.7</b>
April	2.1	0.8	<b>0.7</b>
May	2.0	0.7	<b>0.8</b>
June	1.6	0.9	<b>1.2</b>
July	1.4	1.1	
August	1.6	1.0	
September	1.3	1.1	
October	1.2	1.1	
November	0.9	0.9	
December	0.7	0.7	

## History of Month's Supply





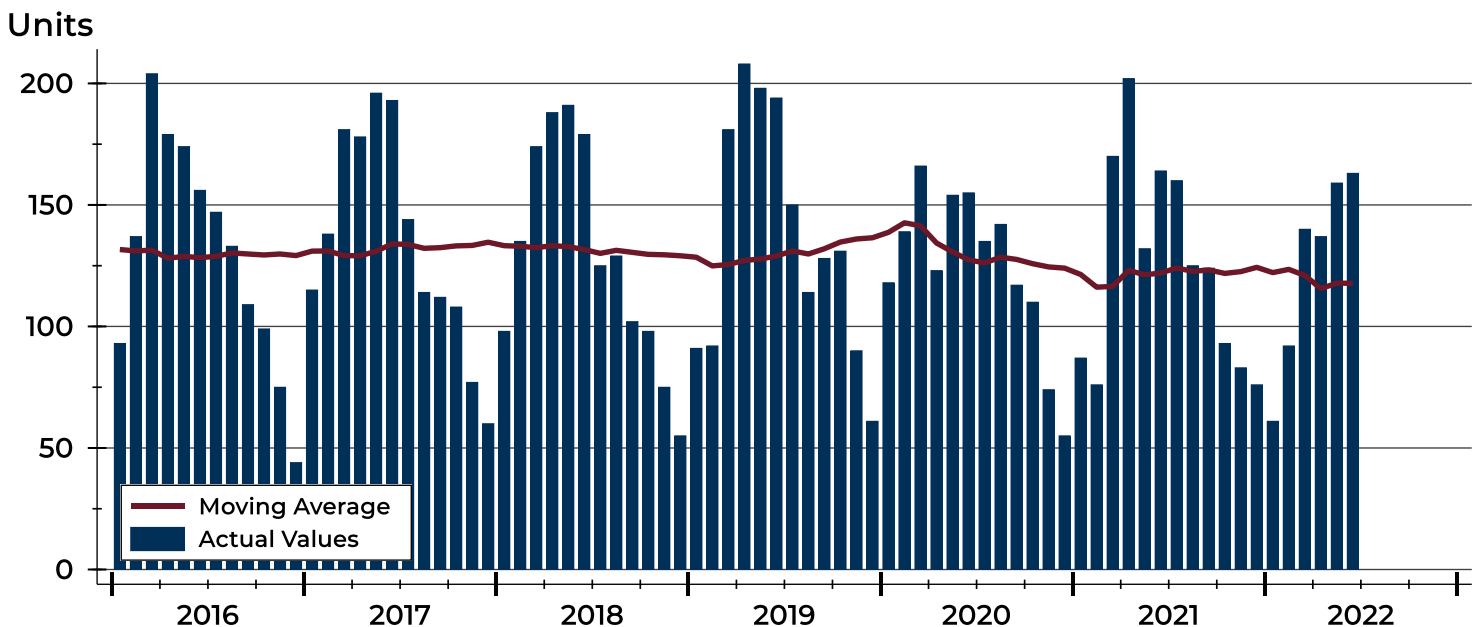
# City of Lawrence New Listings Analysis

Summary Statistics for New Listings		2022	June 2021	Change
Current Month	New Listings	<b>163</b>	164	-0.6%
	Volume (1,000s)	<b>50,091</b>	47,321	5.9%
	Average List Price	<b>307,308</b>	288,542	6.5%
	Median List Price	<b>275,000</b>	272,450	0.9%
Year-to-Date	New Listings	<b>752</b>	831	-9.5%
	Volume (1,000s)	<b>241,548</b>	245,680	-1.7%
	Average List Price	<b>321,208</b>	295,643	8.6%
	Median List Price	<b>295,000</b>	260,000	13.5%

A total of 163 new listings were added in the City of Lawrence during June, down 0.6% from the same month in 2021. Year-to-date the City of Lawrence has seen 752 new listings.

The median list price of these homes was \$275,000 up from \$272,450 in 2021.

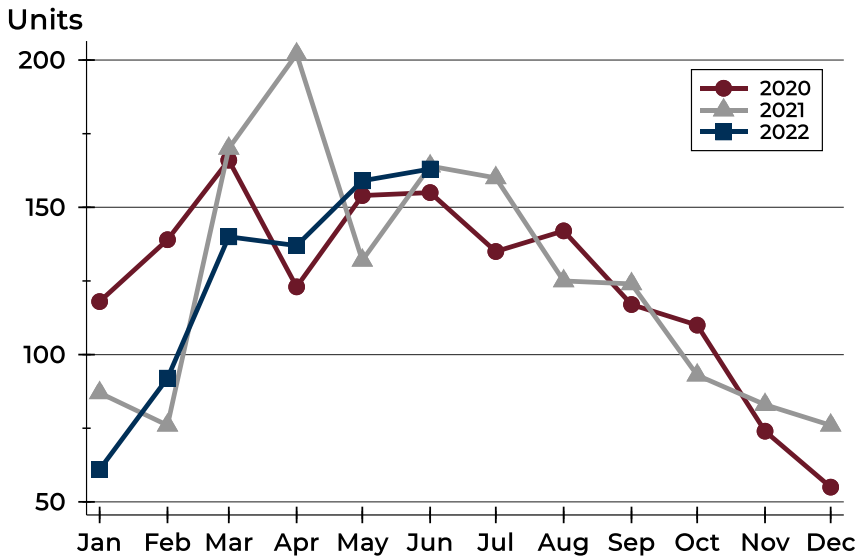
## History of New Listings





## City of Lawrence New Listings Analysis

### New Listings by Month



Month	2020	2021	2022
January	118	87	61
February	139	76	92
March	166	170	140
April	123	202	137
May	154	132	159
June	155	164	163
July	135	160	
August	142	125	
September	117	124	
October	110	93	
November	74	83	
December	55	76	

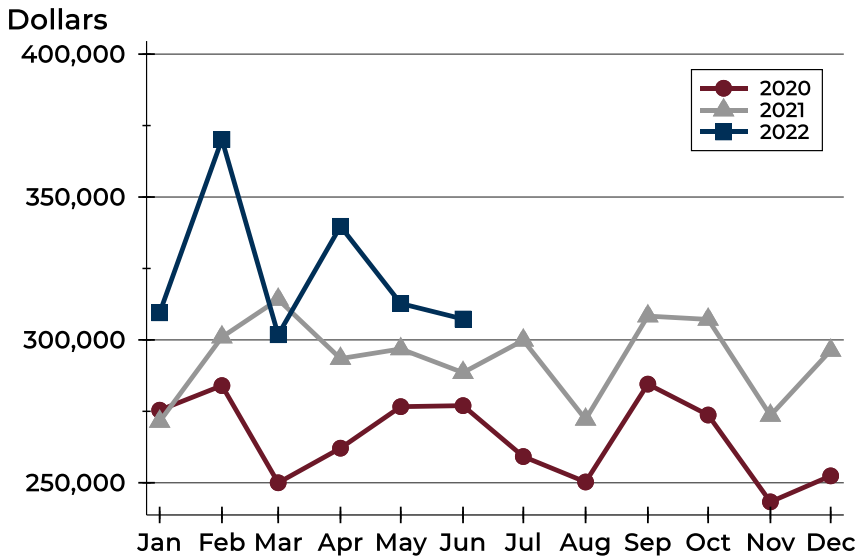
### New Listings by Price Range

Price Range	New Listings		List Price		Days on Market		Price as % of Orig.	
	Number	Percent	Average	Median	Avg.	Med.	Avg.	Med.
Below \$50,000	8	4.9%	1,466	1,238	18	16	98.9%	100.0%
\$50,000-\$99,999	3	1.8%	99,600	99,900	11	8	98.4%	100.0%
\$100,000-\$149,999	3	1.8%	124,333	130,000	12	9	100.0%	100.0%
\$150,000-\$199,999	27	16.6%	181,404	184,900	8	4	99.8%	100.0%
\$200,000-\$249,999	21	12.9%	223,717	225,000	8	4	99.9%	100.0%
\$250,000-\$299,999	30	18.4%	270,105	269,700	7	5	99.8%	100.0%
\$300,000-\$349,999	20	12.3%	330,020	329,900	13	5	100.4%	100.0%
\$350,000-\$399,999	9	5.5%	380,956	379,900	13	12	100.0%	100.0%
\$400,000-\$449,999	15	9.2%	425,747	425,000	13	11	99.0%	100.0%
\$450,000-\$499,999	7	4.3%	474,829	475,000	14	13	99.7%	100.0%
\$500,000-\$599,999	15	9.2%	556,773	550,000	17	16	99.7%	100.0%
\$600,000-\$749,999	4	2.5%	656,975	657,450	13	14	99.4%	100.0%
\$750,000-\$999,999	1	0.6%	990,000	990,000	9	9	100.0%	100.0%
\$1,000,000 and up	0	0.0%	N/A	N/A	N/A	N/A	N/A	N/A



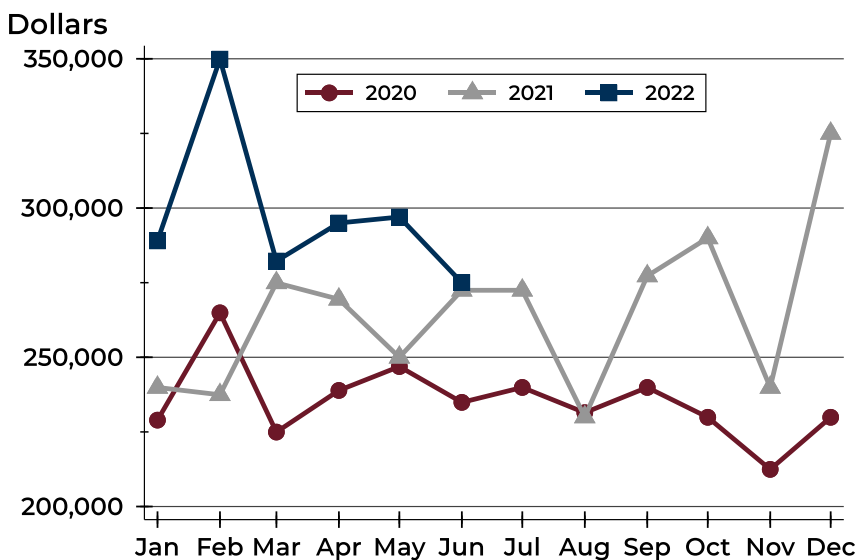
## City of Lawrence New Listings Analysis

### Average Price



Month	2020	2021	2022
January	275,402	271,450	<b>309,488</b>
February	284,009	300,975	<b>370,146</b>
March	249,995	314,158	<b>301,805</b>
April	262,107	293,463	<b>339,757</b>
May	276,641	296,834	<b>312,738</b>
June	276,994	288,542	<b>307,308</b>
July	259,179	299,860	
August	250,273	272,188	
September	284,531	308,336	
October	273,711	307,168	
November	243,317	273,545	
December	252,416	296,310	

### Median Price



Month	2020	2021	2022
January	228,950	239,900	<b>289,000</b>
February	264,900	237,450	<b>349,900</b>
March	224,950	274,950	<b>282,250</b>
April	238,900	269,450	<b>295,000</b>
May	246,900	250,000	<b>297,000</b>
June	234,900	272,450	<b>275,000</b>
July	239,900	272,450	
August	231,450	230,000	
September	239,900	277,250	
October	229,900	290,000	
November	212,450	239,900	
December	229,900	325,000	

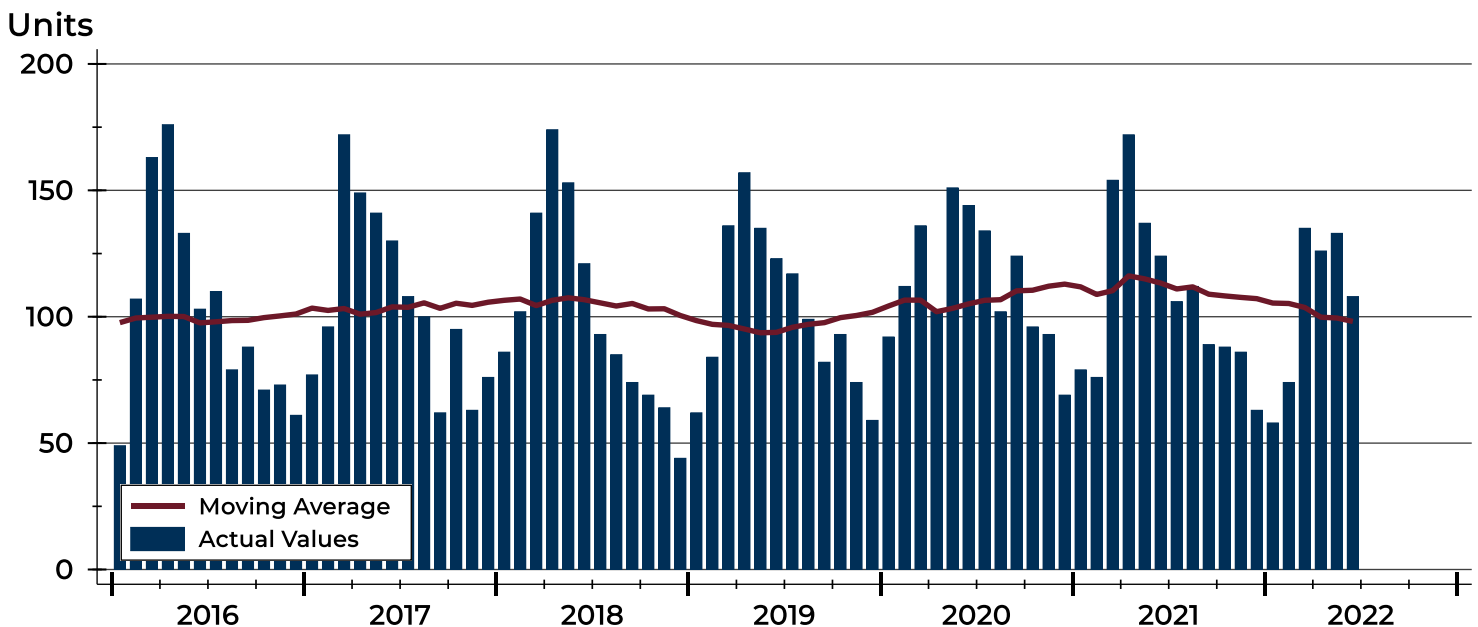


# City of Lawrence Contracts Written Analysis

Summary Statistics for Contracts Written		2022	June 2021	Change	Year-to-Date		
		2022	2021		2022	2021	Change
Contracts Written		108	124	-12.9%	634	742	-14.6%
Volume (1,000s)		34,054	36,095	-5.7%	208,210	222,246	-6.3%
Average	Sale Price	315,319	291,092	8.3%	328,407	299,523	9.6%
	Days on Market	11	8	37.5%	13	13	0.0%
	Percent of Original	99.6%	102.1%	-2.4%	102.5%	102.0%	0.5%
Median	Sale Price	277,000	268,950	3.0%	289,900	259,900	11.5%
	Days on Market	4	4	0.0%	4	3	33.3%
	Percent of Original	100.0%	101.5%	-1.5%	100.0%	100.6%	-0.6%

A total of 108 contracts for sale were written in the City of Lawrence during the month of June, down from 124 in 2021. The median list price of these homes was \$277,000, up from \$268,950 the prior year. Half of the homes that went under contract in June were on the market less than 4 days, compared to 4 days in June 2021.

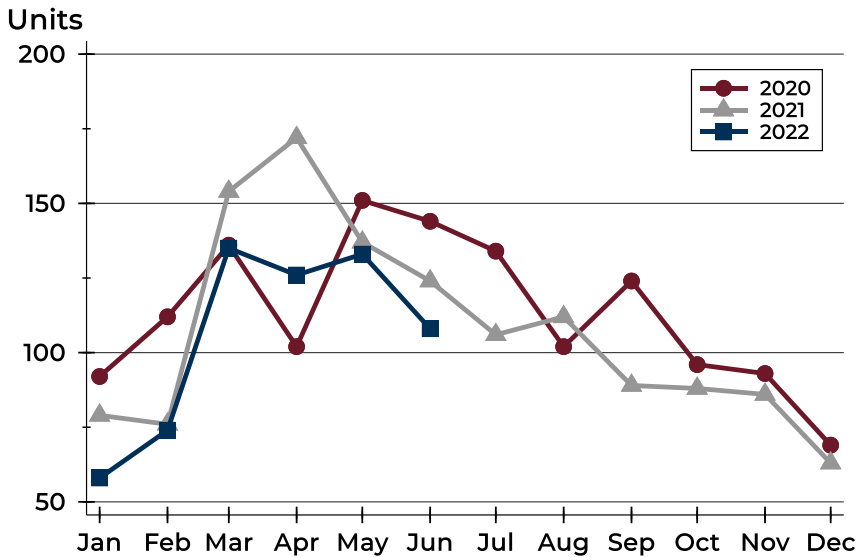
## History of Contracts Written





## City of Lawrence Contracts Written Analysis

### Contracts Written by Month



Month	2020	2021	2022
January	92	79	<b>58</b>
February	112	76	<b>74</b>
March	136	154	<b>135</b>
April	102	172	<b>126</b>
May	151	137	<b>133</b>
June	144	124	<b>108</b>
July	134	106	
August	102	112	
September	124	89	
October	96	88	
November	93	86	
December	69	63	

### Contracts Written by Price Range

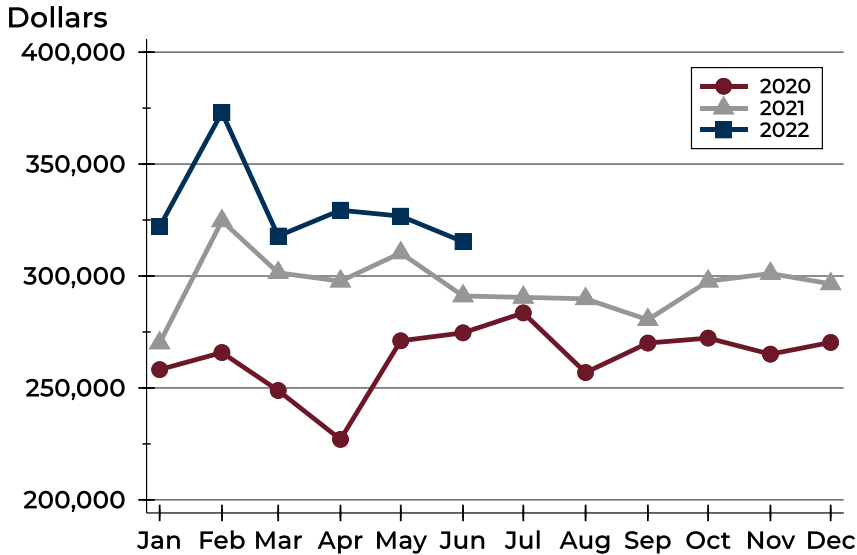
Price Range	Contracts Written		List Price		Days on Market		Price as % of Orig.	
	Number	Percent	Average	Median	Avg.	Med.	Avg.	Med.
Below \$50,000	0	0.0%	N/A	N/A	N/A	N/A	N/A	N/A
\$50,000-\$99,999	1	0.9%	99,000	99,000	2	2	100.0%	100.0%
\$100,000-\$149,999	3	2.8%	124,333	130,000	12	9	100.0%	100.0%
\$150,000-\$199,999	19	17.6%	188,668	190,000	5	3	99.7%	100.0%
\$200,000-\$249,999	18	16.7%	227,106	227,450	6	4	100.1%	100.0%
\$250,000-\$299,999	24	22.2%	273,979	275,000	6	5	99.5%	100.0%
\$300,000-\$349,999	16	14.8%	322,213	317,500	11	4	99.5%	100.0%
\$350,000-\$399,999	5	4.6%	384,000	385,000	4	3	100.0%	100.0%
\$400,000-\$449,999	5	4.6%	421,960	415,000	15	9	98.2%	100.0%
\$450,000-\$499,999	5	4.6%	487,660	489,900	42	25	99.5%	100.0%
\$500,000-\$599,999	7	6.5%	551,986	540,000	10	6	100.7%	100.0%
\$600,000-\$749,999	3	2.8%	667,633	678,000	16	17	100.0%	100.0%
\$750,000-\$999,999	2	1.9%	922,000	922,000	123	123	95.2%	95.2%
\$1,000,000 and up	0	0.0%	N/A	N/A	N/A	N/A	N/A	N/A





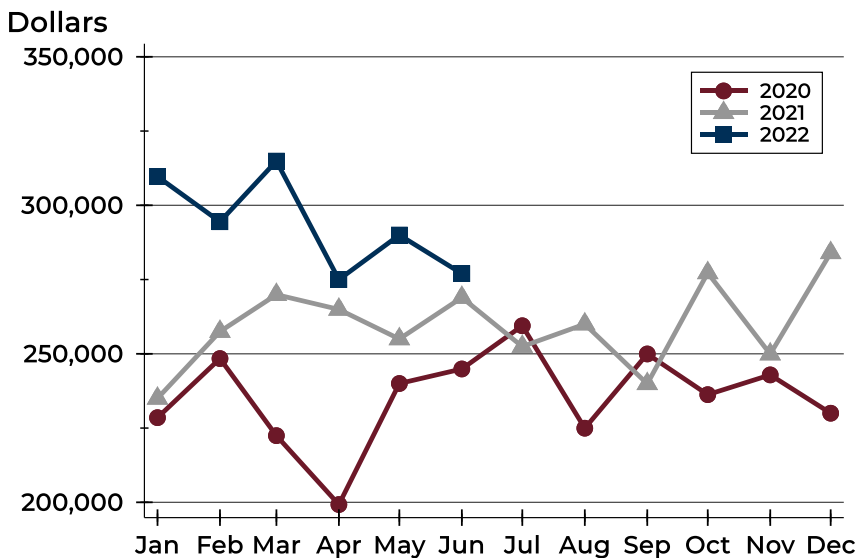
## City of Lawrence Contracts Written Analysis

### Average Price



Month	2020	2021	2022
January	258,187	270,075	<b>322,060</b>
February	265,812	324,637	<b>373,052</b>
March	248,864	301,464	<b>317,857</b>
April	227,017	297,692	<b>329,394</b>
May	271,062	310,322	<b>326,736</b>
June	274,618	291,092	<b>315,319</b>
July	283,526	290,450	
August	256,876	289,806	
September	270,058	280,458	
October	272,269	297,672	
November	265,091	301,109	
December	270,325	296,505	

### Median Price

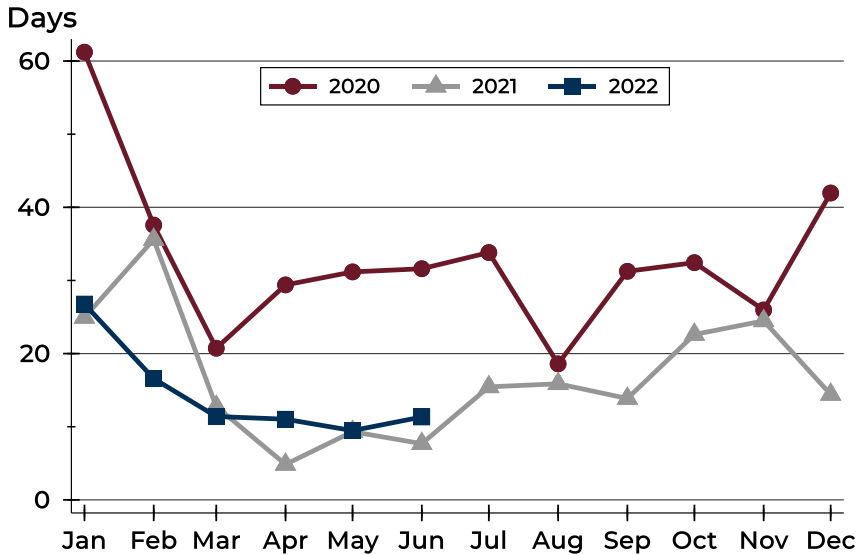


Month	2020	2021	2022
January	228,500	235,000	<b>309,700</b>
February	248,400	257,500	<b>294,475</b>
March	222,450	269,925	<b>314,900</b>
April	199,250	264,950	<b>275,000</b>
May	240,000	255,000	<b>290,000</b>
June	244,900	268,950	<b>277,000</b>
July	259,450	252,450	
August	224,950	260,000	
September	249,950	239,900	
October	236,250	277,250	
November	242,900	249,900	
December	230,000	284,000	



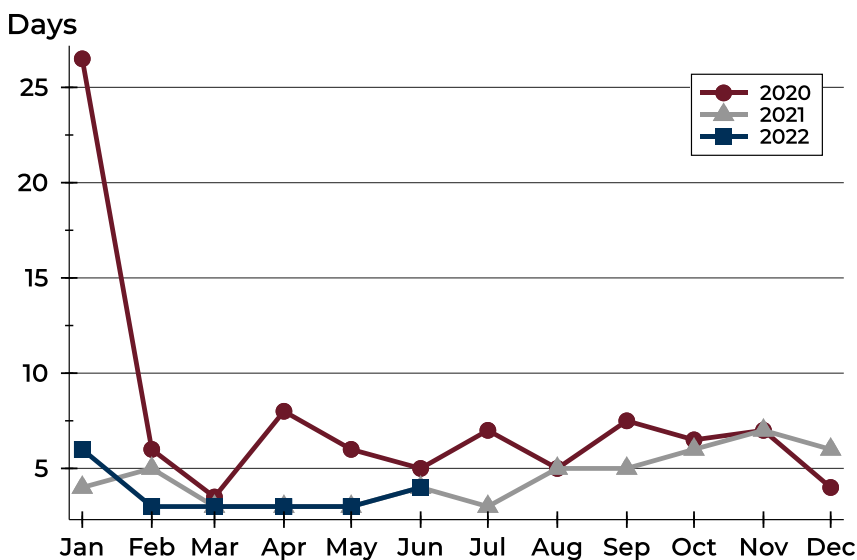
## City of Lawrence Contracts Written Analysis

### Average DOM



Month	2020	2021	2022
January	61	25	<b>27</b>
February	38	36	<b>17</b>
March	21	13	<b>11</b>
April	29	5	<b>11</b>
May	31	9	<b>9</b>
June	32	8	<b>11</b>
July	34	15	
August	19	16	
September	31	14	
October	32	23	
November	26	24	
December	42	14	

### Median DOM



Month	2020	2021	2022
January	27	4	<b>6</b>
February	6	5	<b>3</b>
March	4	3	<b>3</b>
April	8	3	<b>3</b>
May	6	3	<b>3</b>
June	5	4	<b>4</b>
July	7	3	
August	5	5	
September	8	5	
October	7	6	
November	7	7	
December	4	6	



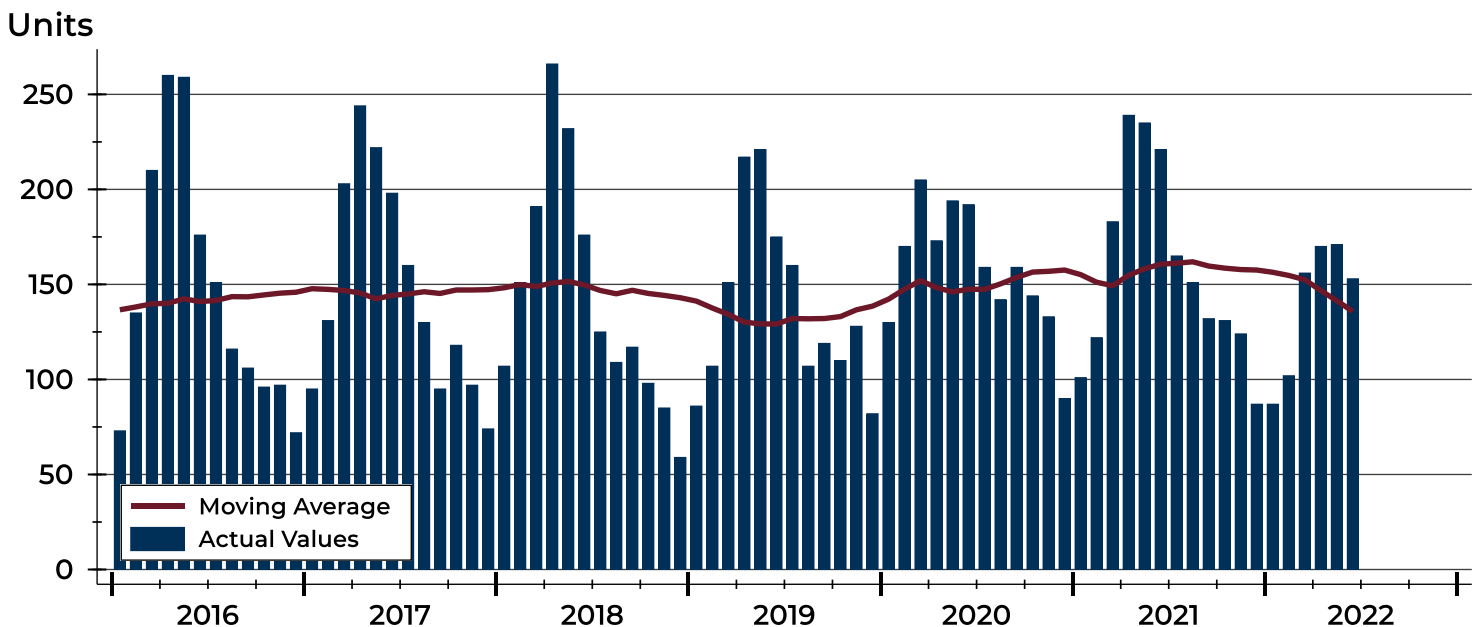
# City of Lawrence Pending Contracts Analysis

Summary Statistics for Pending Contracts		2022	End of June 2021	Change
Pending Contracts		153	221	-30.8%
Volume (1,000s)		50,611	65,567	-22.8%
Average	List Price	330,793	296,684	11.5%
	Days on Market	13	12	8.3%
	Percent of Original	99.3%	99.7%	-0.4%
Median	List Price	290,000	270,000	7.4%
	Days on Market	4	4	0.0%
	Percent of Original	100.0%	100.0%	0.0%

A total of 153 listings in the City of Lawrence had contracts pending at the end of June, down from 221 contracts pending at the end of June 2021.

Pending contracts reflect listings with a contract in place at the end of the month. In contrast, contracts written measures the number of listings put under contract during the month.

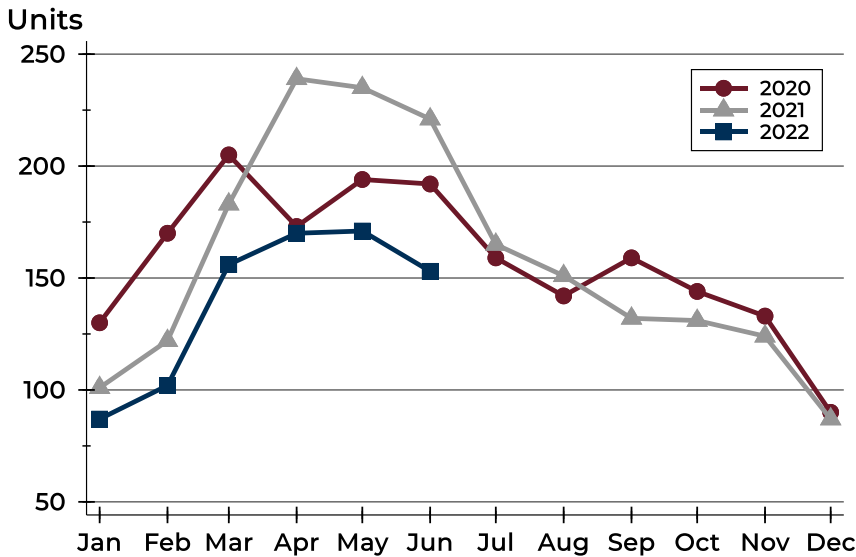
## History of Pending Contracts





## City of Lawrence Pending Contracts Analysis

### Pending Contracts by Month



Month	2020	2021	2022
January	130	101	<b>87</b>
February	170	122	<b>102</b>
March	205	183	<b>156</b>
April	173	239	<b>170</b>
May	194	235	<b>171</b>
June	192	221	<b>153</b>
July	159	165	
August	142	151	
September	159	132	
October	144	131	
November	133	124	
December	90	87	

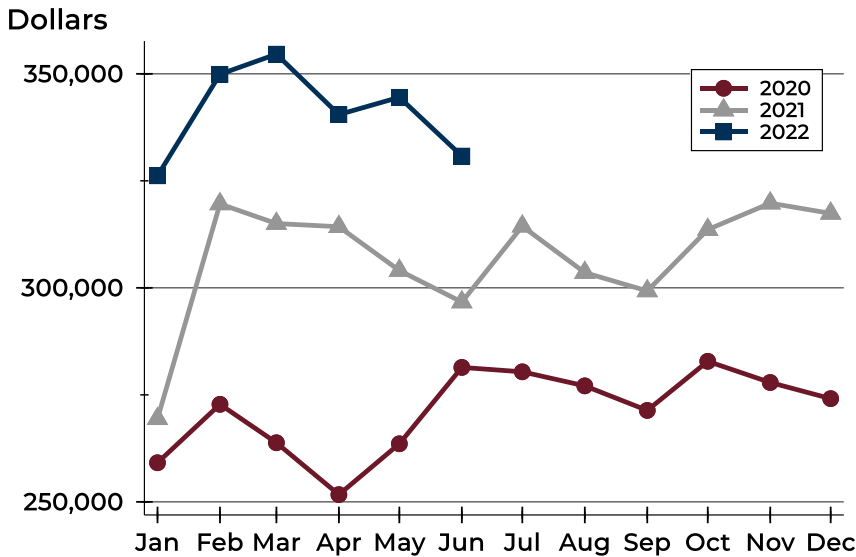
### Pending Contracts by Price Range

Price Range	Pending Contracts		List Price		Days on Market		Price as % of Orig.	
	Number	Percent	Average	Median	Avg.	Med.	Avg.	Med.
Below \$50,000	0	0.0%	N/A	N/A	N/A	N/A	N/A	N/A
\$50,000-\$99,999	1	0.7%	99,000	99,000	2	2	100.0%	100.0%
\$100,000-\$149,999	6	3.9%	125,325	125,000	28	14	97.9%	100.0%
\$150,000-\$199,999	24	15.7%	184,383	185,500	10	5	99.4%	100.0%
\$200,000-\$249,999	23	15.0%	226,461	225,000	5	3	100.1%	100.0%
\$250,000-\$299,999	28	18.3%	274,836	275,000	6	3	99.5%	100.0%
\$300,000-\$349,999	22	14.4%	321,370	317,500	11	5	98.6%	100.0%
\$350,000-\$399,999	9	5.9%	382,278	385,000	20	3	100.0%	100.0%
\$400,000-\$449,999	7	4.6%	422,829	425,000	12	4	98.4%	100.0%
\$450,000-\$499,999	10	6.5%	480,750	482,450	33	19	99.3%	100.0%
\$500,000-\$599,999	14	9.2%	544,593	525,000	9	6	99.6%	100.0%
\$600,000-\$749,999	6	3.9%	652,500	638,000	25	16	100.0%	100.0%
\$750,000-\$999,999	3	2.0%	871,300	849,000	82	12	96.8%	100.0%
\$1,000,000 and up	0	0.0%	N/A	N/A	N/A	N/A	N/A	N/A



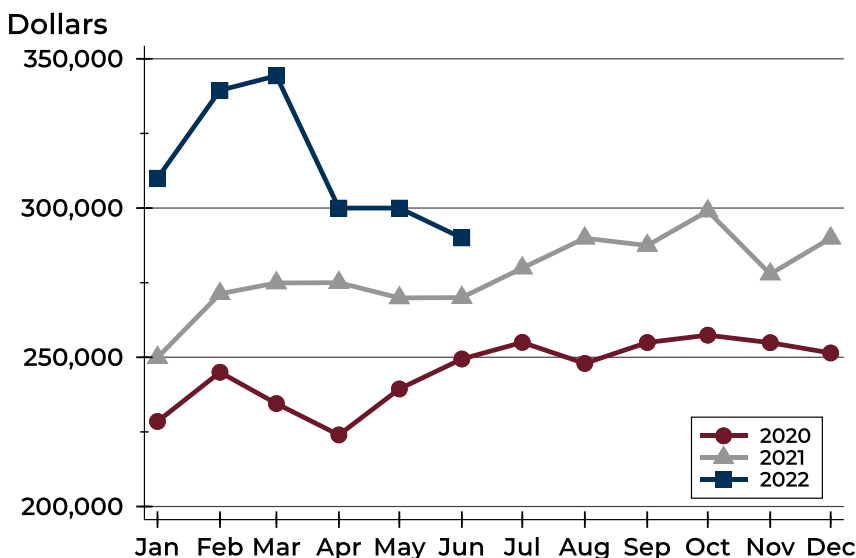
# City of Lawrence Pending Contracts Analysis

## Average Price



Month	2020	2021	2022
January	259,140	269,413	<b>326,176</b>
February	272,790	319,605	<b>349,894</b>
March	263,812	315,023	<b>354,598</b>
April	251,694	314,285	<b>340,485</b>
May	263,573	304,048	<b>344,523</b>
June	281,418	296,684	<b>330,793</b>
July	280,388	314,396	
August	277,101	303,562	
September	271,368	299,276	
October	282,843	313,606	
November	277,889	319,781	
December	274,123	317,398	

## Median Price

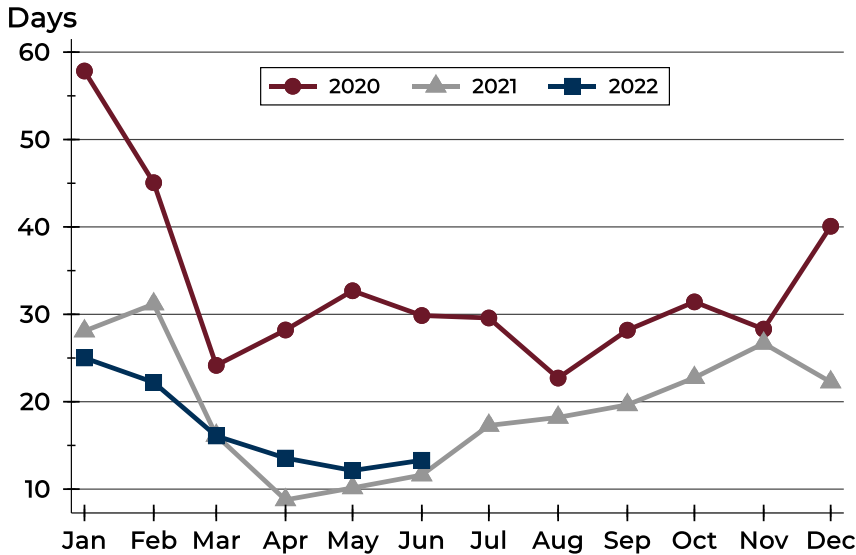


Month	2020	2021	2022
January	228,500	249,900	<b>310,000</b>
February	245,000	271,300	<b>339,450</b>
March	234,500	274,900	<b>344,300</b>
April	224,000	275,000	<b>300,000</b>
May	239,400	269,900	<b>300,000</b>
June	249,425	270,000	<b>290,000</b>
July	255,000	279,900	
August	247,950	289,900	
September	254,950	287,450	
October	257,425	299,000	
November	254,900	277,900	
December	251,450	289,900	



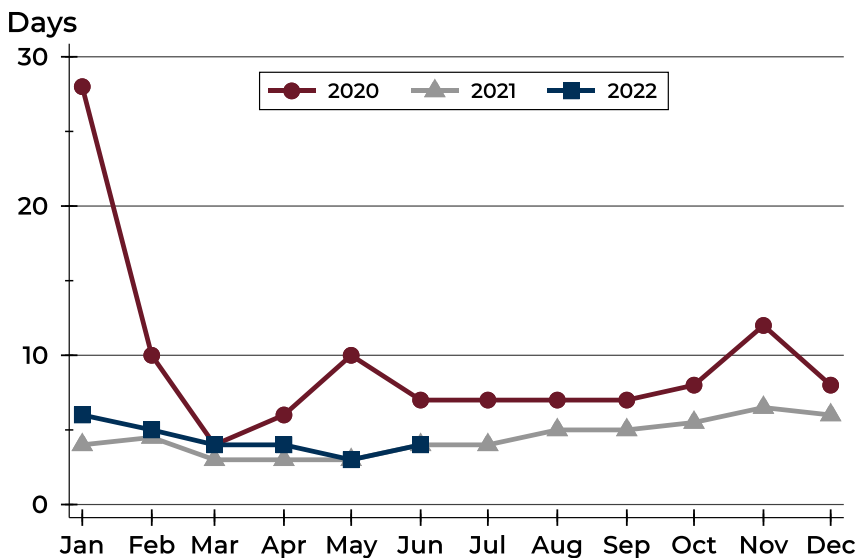
# City of Lawrence Pending Contracts Analysis

## Average DOM



Month	2020	2021	2022
January	58	28	25
February	45	31	22
March	24	16	16
April	28	9	14
May	33	10	12
June	30	12	13
July	30	17	
August	23	18	
September	28	20	
October	31	23	
November	28	27	
December	40	22	

## Median DOM



Month	2020	2021	2022
January	28	4	6
February	10	5	5
March	4	3	4
April	6	3	4
May	10	3	3
June	7	4	4
July	7	4	
August	7	5	
September	7	5	
October	8	6	
November	12	7	
December	8	6	