

City of Lawrence Housing Report



Market Overview

City of Lawrence Home Sales Fell in October

Total home sales in the City of Lawrence fell last month to 74 units, compared to 89 units in October 2024. Total sales volume was \$26.1 million, down from a year earlier.

The median sale price in October was \$289,998, down from \$320,000 a year earlier. Homes that sold in October were typically on the market for 10 days and sold for 99.8% of their list prices.

City of Lawrence Active Listings Down at End of October

The total number of active listings in the City of Lawrence at the end of October was 154 units, down from 190 at the same point in 2024. This represents a 1.8 months' supply of homes available for sale. The median list price of homes on the market at the end of October was \$347,400.

During October, a total of 76 contracts were written up from 65 in October 2024. At the end of the month, there were 82 contracts still pending.

Report Contents

- **Summary Statistics – Page 2**
- **Closed Listing Analysis – Page 3**
- **Active Listings Analysis – Page 7**
- **Months' Supply Analysis – Page 11**
- **New Listings Analysis – Page 12**
- **Contracts Written Analysis – Page 15**
- **Pending Contracts Analysis – Page 19**

Contact Information

Rob Hulse, Executive Vice-President
Lawrence Board of REALTORS®
3838 W. 6th Street (at Monterey)
Lawrence, KS 66049
785-842-1843

Rob@LawrenceRealtor.com
www.LawrenceRealtor.com



**October
2025**

Lawrence MLS Statistics



City of Lawrence Summary Statistics

October MLS Statistics Three-year History		Current Month			Year-to-Date		
		2025	2024	2023	2025	2024	2023
Home Sales Change from prior year		74 -16.9%	89 15.6%	77 -25.2%	870 7.3%	811 3.8%	781 -24.0%
Active Listings Change from prior year		154 -18.9%	190 27.5%	149 41.9%	N/A	N/A	N/A
Months' Supply Change from prior year		1.8 -25.0%	2.4 20.0%	2.0 100.0%	N/A	N/A	N/A
New Listings Change from prior year		90 -18.2%	110 8.9%	101 40.3%	1,117 -3.5%	1,157 12.0%	1,033 -14.8%
Contracts Written Change from prior year		76 16.9%	65 -4.4%	68 -15.0%	893 5.7%	845 5.9%	798 -21.7%
Pending Contracts Change from prior year		82 -10.9%	92 27.8%	72 -12.2%	N/A	N/A	N/A
Sales Volume (1,000s) Change from prior year		26,087 -15.2%	30,764 19.2%	25,807 -24.2%	322,897 14.4%	282,353 6.4%	265,480 -21.6%
Average	Sale Price Change from prior year	352,531 2.0%	345,662 3.1%	335,150 1.5%	371,146 6.6%	348,155 2.4%	339,924 3.2%
	List Price of Actives Change from prior year	451,550 13.3%	398,530 6.6%	373,865 0.4%	N/A	N/A	N/A
	Days on Market Change from prior year	20 -25.9%	27 8.0%	25 56.3%	24 0.0%	24 33.3%	18 28.6%
	Percent of List Change from prior year	98.5% -0.1%	98.6% -0.3%	98.9% -0.2%	99.3% 0.2%	99.1% -1.5%	100.6% -1.0%
	Percent of Original Change from prior year	97.8% 0.4%	97.4% 0.1%	97.3% -0.5%	98.4% 0.0%	98.4% -1.6%	100.0% -0.9%
Median	Sale Price Change from prior year	289,999 -9.4%	320,000 0.0%	319,900 4.9%	320,000 1.6%	315,000 3.3%	305,000 3.4%
	List Price of Actives Change from prior year	347,400 0.0%	347,450 -0.7%	349,900 3.2%	N/A	N/A	N/A
	Days on Market Change from prior year	11 -8.3%	12 33.3%	9 80.0%	7 -12.5%	8 100.0%	4 0.0%
	Percent of List Change from prior year	99.8% 0.1%	99.7% -0.3%	100.0% 0.0%	100.0% 0.0%	100.0% 0.0%	100.0% 0.0%
	Percent of Original Change from prior year	99.0% 0.2%	98.8% 0.8%	98.0% -2.0%	100.0% 0.0%	100.0% 0.0%	100.0% 0.0%

Note: Year-to-date statistics cannot be calculated for Active Listings, Months' Supply and Pending Contracts.



**October
2025**

Lawrence MLS Statistics



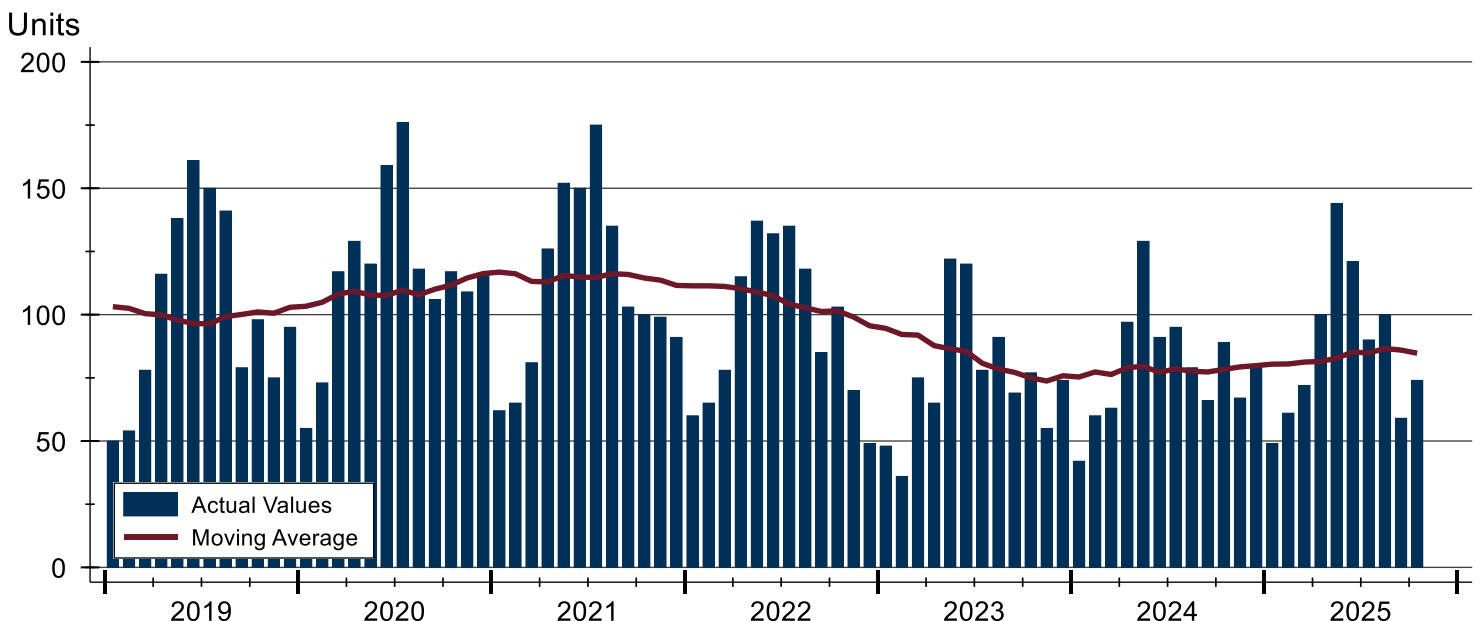
City of Lawrence Closed Listings Analysis

Summary Statistics for Closed Listings		2025	October 2024	Change	2025	Year-to-Date 2024	Change
Closed Listings		74	89	-16.9%	870	811	7.3%
Volume (1,000s)		26,087	30,764	-15.2%	322,897	282,353	14.4%
Months' Supply		1.8	2.4	-25.0%	N/A	N/A	N/A
Average	Sale Price	352,531	345,662	2.0%	371,146	348,155	6.6%
	Days on Market	20	27	-25.9%	24	24	0.0%
	Percent of List	98.5%	98.6%	-0.1%	99.3%	99.1%	0.2%
	Percent of Original	97.8%	97.4%	0.4%	98.4%	98.4%	0.0%
Median	Sale Price	289,999	320,000	-9.4%	320,000	315,000	1.6%
	Days on Market	11	12	-8.3%	7	8	-12.5%
	Percent of List	99.8%	99.7%	0.1%	100.0%	100.0%	0.0%
	Percent of Original	99.0%	98.8%	0.2%	100.0%	100.0%	0.0%

A total of 74 homes sold in the City of Lawrence in October, down from 89 units in October 2024. Total sales volume fell to \$26.1 million compared to \$30.8 million in the previous year.

The median sales price in October was \$289,998, down 9.4% compared to the prior year. Median days on market was 10 days, up from 7 days in September, but down from 12 in October 2024.

History of Closed Listings





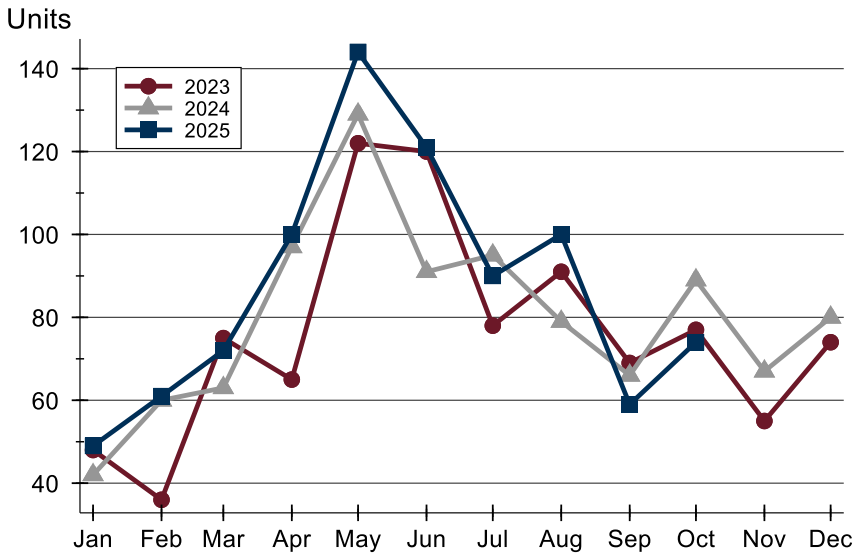
**October
2025**

Lawrence MLS Statistics



City of Lawrence Closed Listings Analysis

Closed Listings by Month



Month	2023	2024	2025
January	48	42	49
February	36	60	61
March	75	63	72
April	65	97	100
May	122	129	144
June	120	91	121
July	78	95	90
August	91	79	100
September	69	66	59
October	77	89	74
November	55	67	
December	74	80	

Closed Listings by Price Range

Price Range	Sales Number	Percent	Months' Supply	Sale Price Average	Median	Days on Market Avg.	Med.	Price as % of List Avg.	Med.	Price as % of Orig. Avg.	Med.
Below \$50,000	0	0.0%	N/A	N/A	N/A	N/A	N/A	N/A	N/A	N/A	N/A
\$50,000-\$99,999	0	0.0%	12.0	N/A	N/A	N/A	N/A	N/A	N/A	N/A	N/A
\$100,000-\$149,999	3	4.1%	2.7	126,367	132,500	15	1	96.6%	98.1%	96.6%	98.1%
\$150,000-\$199,999	6	8.1%	1.1	181,733	186,750	24	10	100.5%	101.8%	99.0%	100.0%
\$200,000-\$249,999	13	17.6%	1.0	227,646	230,000	16	11	98.6%	100.0%	98.3%	100.0%
\$250,000-\$299,999	18	24.3%	2.2	275,658	279,450	24	11	99.3%	100.0%	97.9%	99.5%
\$300,000-\$349,999	11	14.9%	1.1	323,116	320,771	32	24	96.6%	97.0%	95.8%	95.8%
\$350,000-\$399,999	4	5.4%	1.2	382,575	381,000	11	5	100.1%	100.0%	99.5%	99.6%
\$400,000-\$449,999	4	5.4%	0.7	429,750	425,000	14	8	101.2%	101.2%	101.2%	101.2%
\$450,000-\$499,999	4	5.4%	2.3	477,188	475,000	6	3	99.1%	100.5%	98.5%	100.5%
\$500,000-\$599,999	3	4.1%	2.6	531,104	528,311	13	13	97.2%	97.4%	97.2%	97.4%
\$600,000-\$749,999	4	5.4%	3.5	668,606	662,000	14	15	96.8%	97.3%	96.8%	97.3%
\$750,000-\$999,999	3	4.1%	4.2	847,167	812,500	33	25	96.9%	96.2%	96.1%	95.6%
\$1,000,000 and up	1	1.4%	12.0	1,175,000	1,175,000	7	7	94.1%	94.1%	94.1%	94.1%



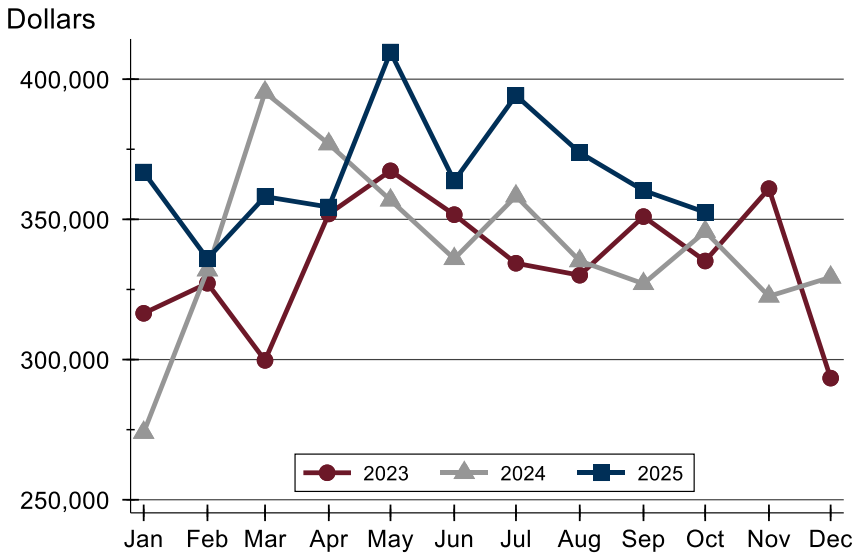
**October
2025**

Lawrence MLS Statistics



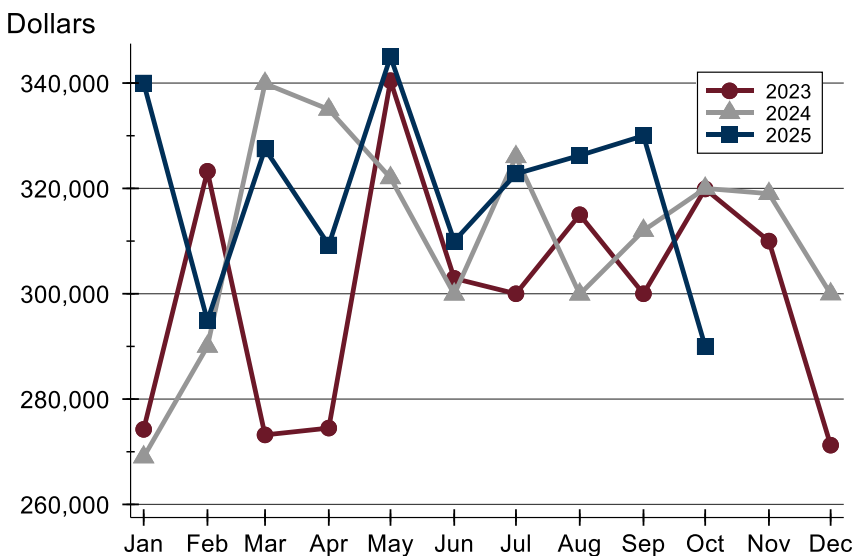
City of Lawrence Closed Listings Analysis

Average Price



Month	2023	2024	2025
January	316,490	273,973	366,863
February	327,216	331,921	335,951
March	299,705	395,294	358,114
April	351,932	376,885	354,396
May	367,315	356,843	409,665
June	351,680	335,946	363,717
July	334,347	358,291	394,198
August	330,085	335,185	373,798
September	350,988	327,043	360,303
October	335,150	345,662	352,531
November	360,959	322,575	
December	293,378	329,339	

Median Price



Month	2023	2024	2025
January	274,250	269,000	340,000
February	323,250	290,000	294,900
March	273,200	339,900	327,500
April	274,500	335,000	309,253
May	340,450	322,000	345,000
June	302,915	299,900	310,000
July	300,000	326,000	322,750
August	315,000	299,900	326,250
September	300,000	312,000	330,000
October	319,900	320,000	289,999
November	310,000	319,000	
December	271,250	299,950	



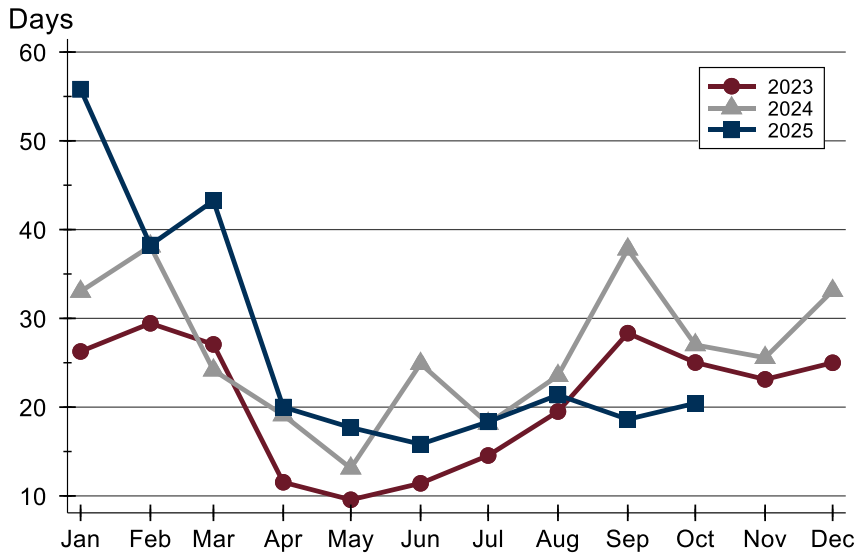
**October
2025**

Lawrence MLS Statistics



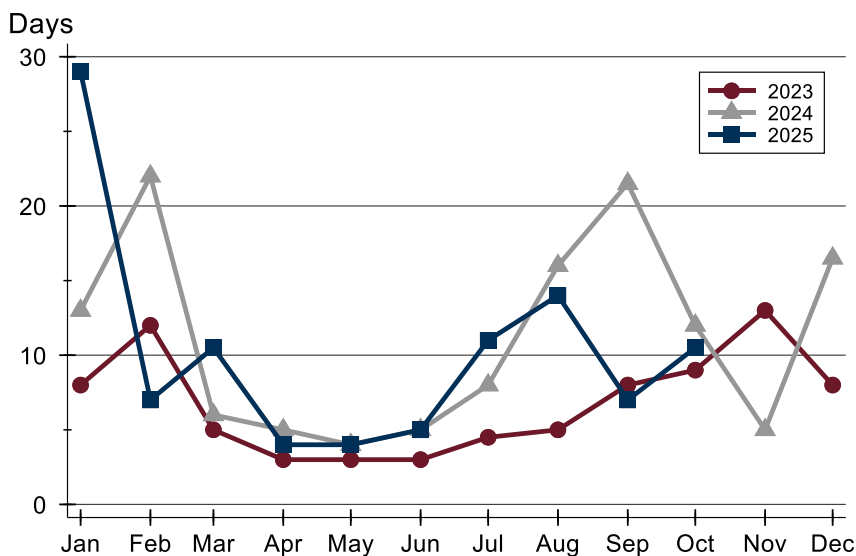
City of Lawrence Closed Listings Analysis

Average DOM



Month	2023	2024	2025
January	26	33	56
February	29	38	38
March	27	24	43
April	12	19	20
May	10	13	18
June	11	25	16
July	15	18	18
August	20	24	21
September	28	38	19
October	25	27	20
November	23	26	
December	25	33	

Median DOM



Month	2023	2024	2025
January	8	13	29
February	12	22	7
March	5	6	11
April	3	5	4
May	3	4	4
June	3	5	5
July	5	8	11
August	5	16	14
September	8	22	7
October	9	12	11
November	13	5	
December	8	17	



**October
2025**

Lawrence MLS Statistics



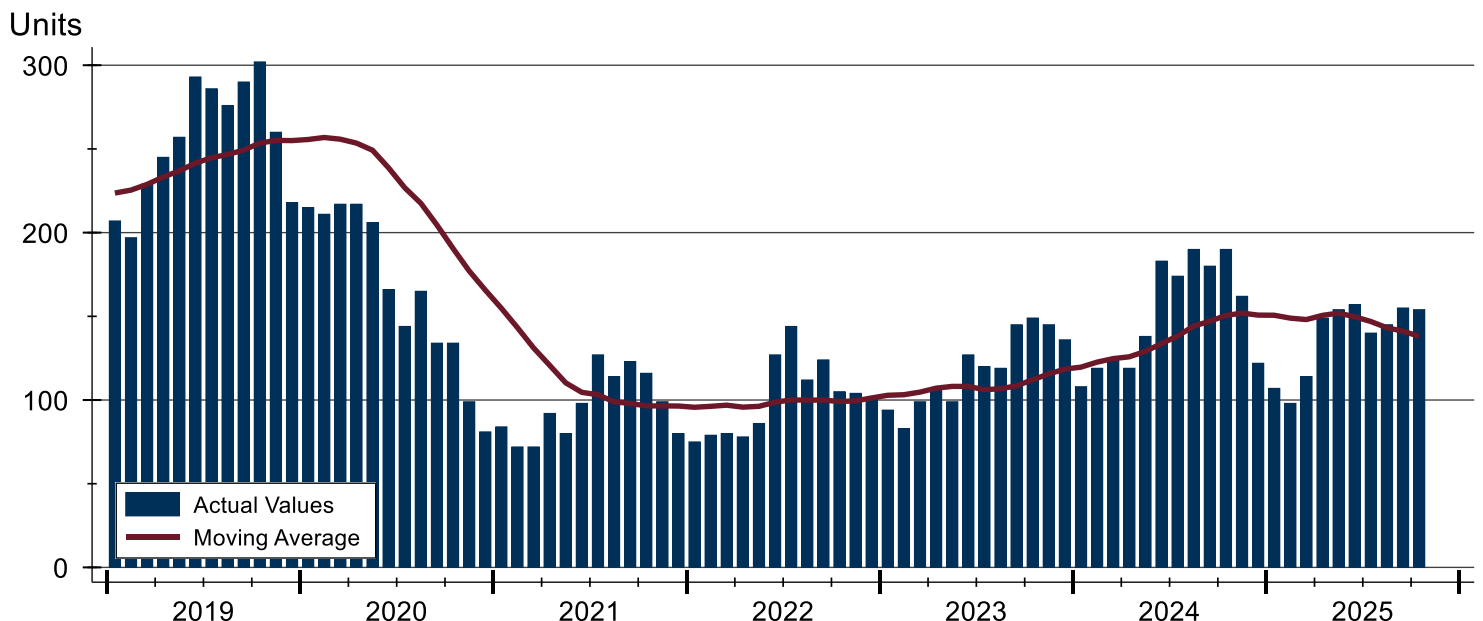
City of Lawrence Active Listings Analysis

Summary Statistics for Active Listings		2025	End of October 2024	Change
Active Listings		154	190	-18.9%
Volume (1,000s)		69,539	75,721	-8.2%
Months' Supply		1.8	2.4	-25.0%
Average	List Price	451,550	398,530	13.3%
	Days on Market	50	65	-23.1%
	Percent of Original	97.7%	98.2%	-0.5%
Median	List Price	347,400	347,450	0.0%
	Days on Market	23	46	-50.0%
	Percent of Original	100.0%	100.0%	0.0%

A total of 154 homes were available for sale in the City of Lawrence at the end of October. This represents a 1.8 months' supply of active listings.

The median list price of homes on the market at the end of October was \$347,400, showing little change from the same point in 2024. The typical time on market for active listings was 23 days, down from 46 days a year earlier.

History of Active Listings





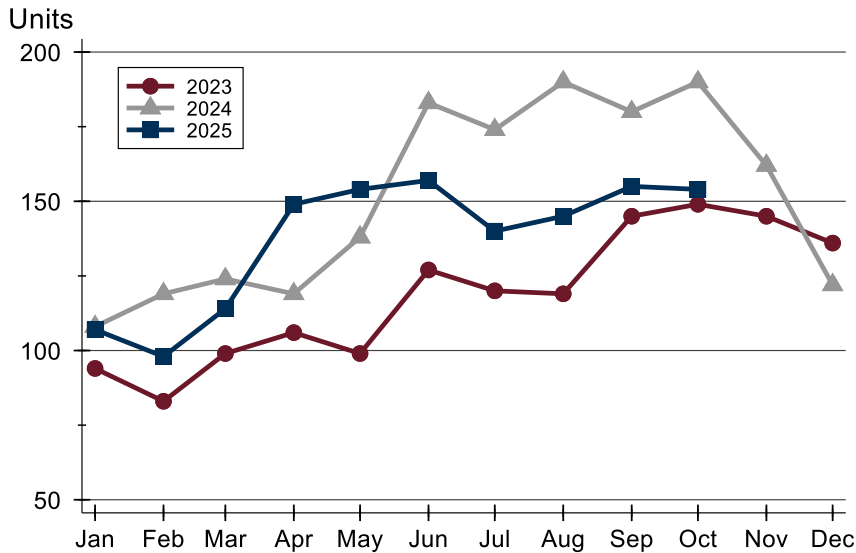
**October
2025**

Lawrence MLS Statistics



City of Lawrence Active Listings Analysis

Active Listings by Month



Month	2023	2024	2025
January	94	108	107
February	83	119	98
March	99	124	114
April	106	119	149
May	99	138	154
June	127	183	157
July	120	174	140
August	119	190	145
September	145	180	155
October	149	190	154
November	145	162	
December	136	122	

Active Listings by Price Range

Price Range	Active Listings Number	Percent	Months' Supply	List Price Average	Median	Days on Market Avg.	Med.	Price as % of Orig. Avg.	Med.
Below \$50,000	1	0.6%	N/A	1,500	1,500	92	92	90.9%	90.9%
\$50,000-\$99,999	4	2.6%	12.0	84,905	86,725	60	46	92.8%	99.1%
\$100,000-\$149,999	8	5.2%	2.7	125,838	125,450	73	65	93.3%	93.4%
\$150,000-\$199,999	6	3.9%	1.1	179,458	183,950	25	22	95.3%	97.1%
\$200,000-\$249,999	12	7.8%	1.0	230,858	233,500	53	45	97.3%	100.0%
\$250,000-\$299,999	31	20.1%	2.2	278,032	279,450	46	29	98.3%	100.0%
\$300,000-\$349,999	16	10.4%	1.1	326,163	322,500	31	14	99.2%	100.0%
\$350,000-\$399,999	12	7.8%	1.2	374,983	382,350	24	18	99.3%	100.0%
\$400,000-\$449,999	5	3.2%	0.7	436,740	435,000	28	24	100.0%	100.0%
\$450,000-\$499,999	10	6.5%	2.3	478,830	476,950	43	41	97.5%	98.0%
\$500,000-\$599,999	17	11.0%	2.6	550,371	550,000	53	34	98.1%	100.0%
\$600,000-\$749,999	14	9.1%	3.5	667,671	654,950	47	15	98.5%	100.0%
\$750,000-\$999,999	9	5.8%	4.2	866,967	839,000	37	32	99.0%	100.0%
\$1,000,000 and up	9	5.8%	12.0	1,391,999	1,450,000	146	41	96.1%	100.0%



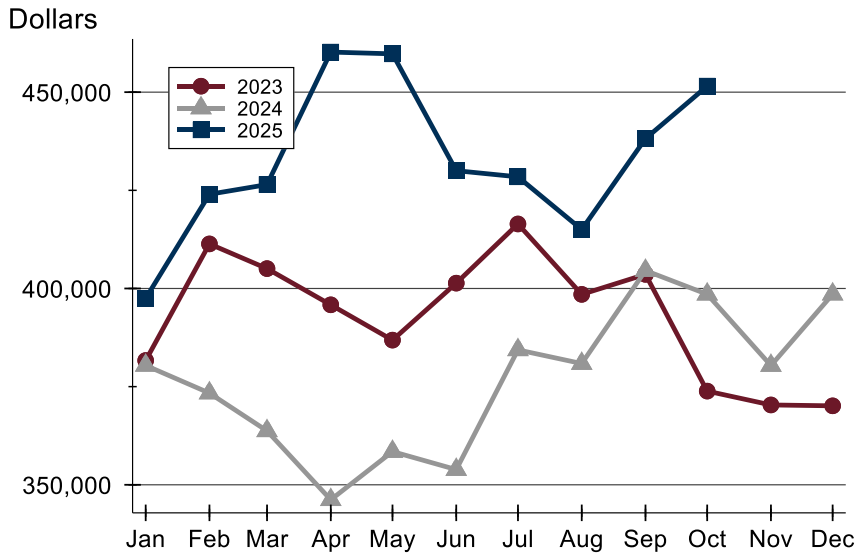
**October
2025**

Lawrence MLS Statistics



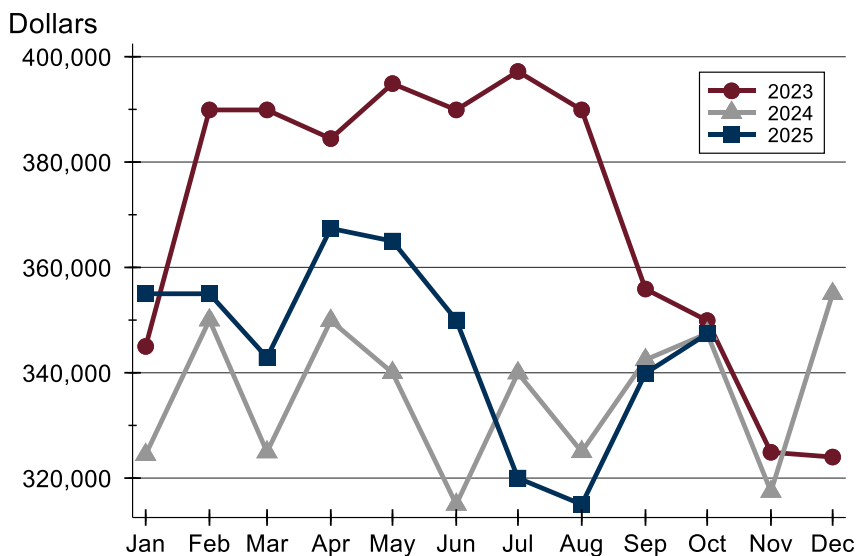
City of Lawrence Active Listings Analysis

Average Price



Month	2023	2024	2025
January	381,662	380,405	397,492
February	411,359	373,361	423,998
March	405,067	363,744	426,466
April	395,842	346,189	460,216
May	386,853	358,466	459,766
June	401,362	353,875	430,003
July	416,435	384,366	428,439
August	398,505	380,883	415,012
September	403,598	404,570	438,170
October	373,865	398,530	451,550
November	370,337	380,374	
December	370,118	398,546	

Median Price



Month	2023	2024	2025
January	345,000	324,450	355,000
February	389,900	350,000	355,000
March	389,900	324,950	342,900
April	384,450	349,900	367,400
May	394,900	340,000	365,000
June	389,900	315,000	350,000
July	397,200	339,950	320,000
August	389,900	325,000	315,000
September	355,900	342,450	339,900
October	349,900	347,450	347,400
November	324,900	317,450	
December	324,000	355,000	



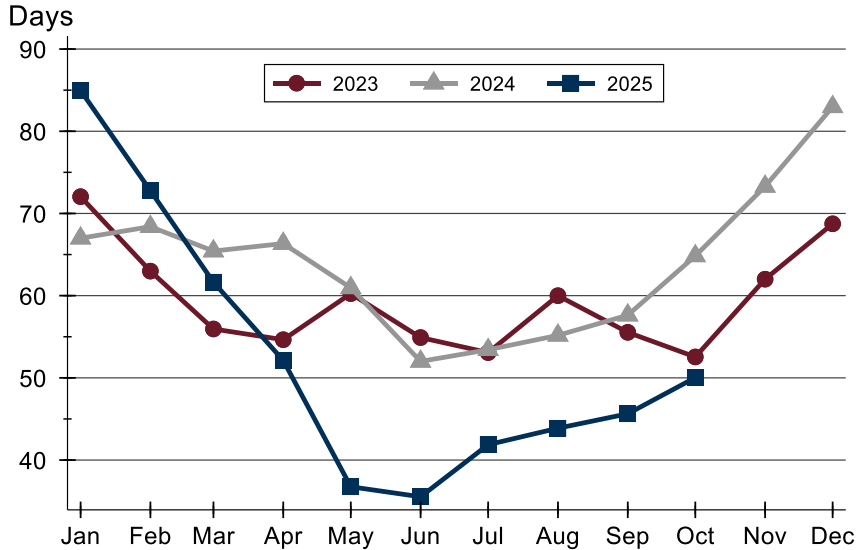
**October
2025**

Lawrence MLS Statistics



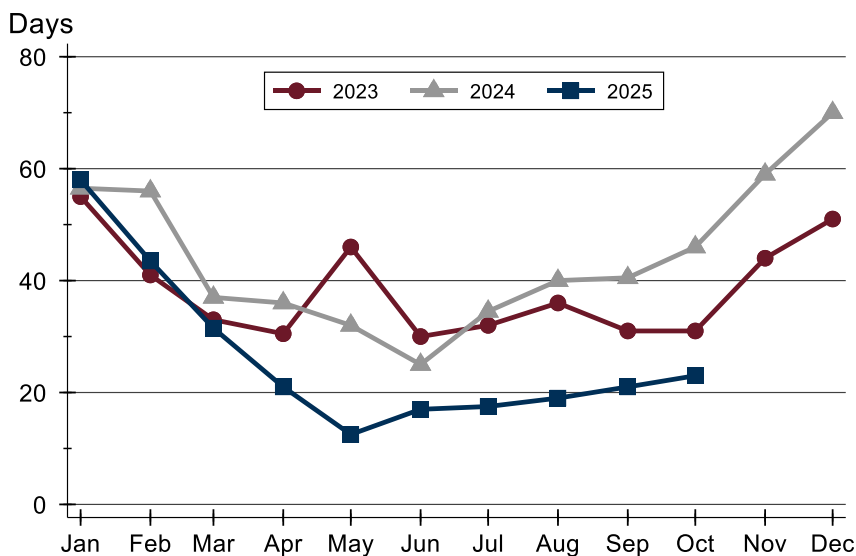
City of Lawrence Active Listings Analysis

Average DOM



Month	2023	2024	2025
January	72	67	85
February	63	68	73
March	56	65	62
April	55	66	52
May	60	61	37
June	55	52	36
July	53	53	42
August	60	55	44
September	56	58	46
October	53	65	50
November	62	73	
December	69	83	

Median DOM

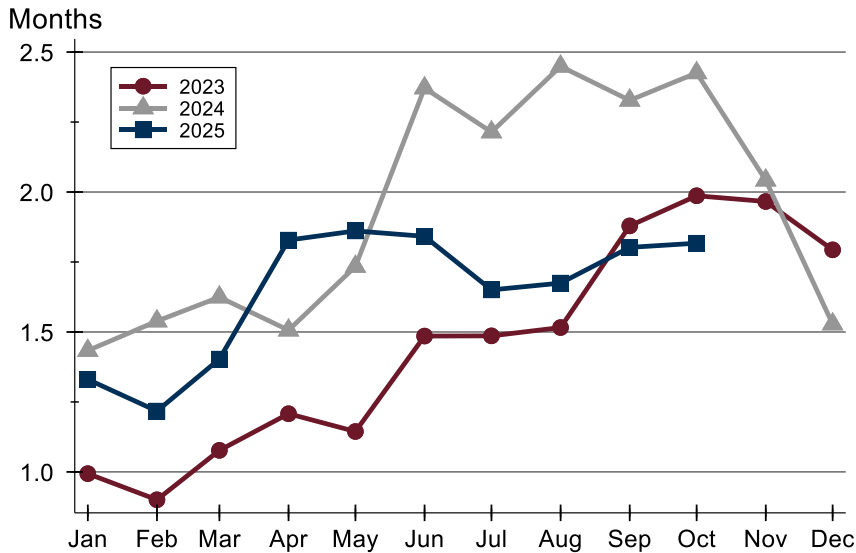


Month	2023	2024	2025
January	55	57	58
February	41	56	44
March	33	37	32
April	31	36	21
May	46	32	13
June	30	25	17
July	32	35	18
August	36	40	19
September	31	41	21
October	31	46	23
November	44	59	
December	51	70	



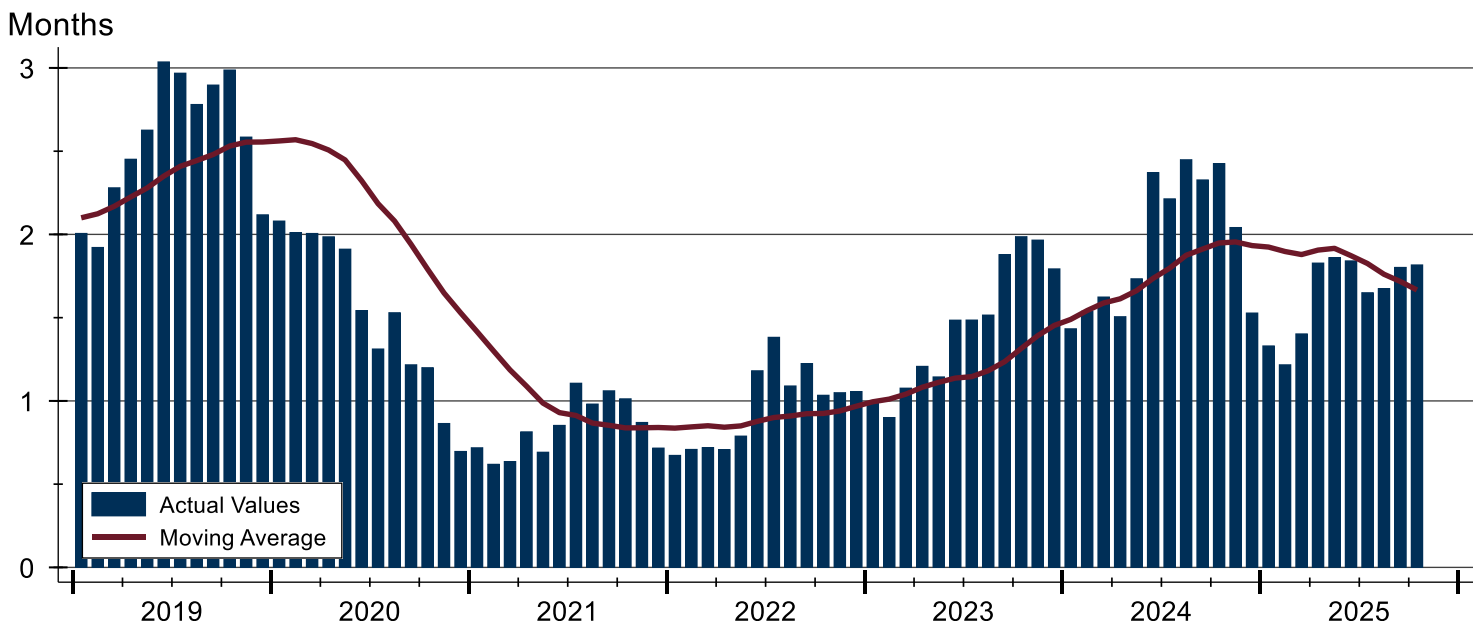
City of Lawrence Months' Supply Analysis

Months' Supply by Month



Month	2023	2024	2025
January	1.0	1.4	1.3
February	0.9	1.5	1.2
March	1.1	1.6	1.4
April	1.2	1.5	1.8
May	1.1	1.7	1.9
June	1.5	2.4	1.8
July	1.5	2.2	1.7
August	1.5	2.4	1.7
September	1.9	2.3	1.8
October	2.0	2.4	1.8
November	2.0	2.0	
December	1.8	1.5	

History of Month's Supply





**October
2025**

Lawrence MLS Statistics



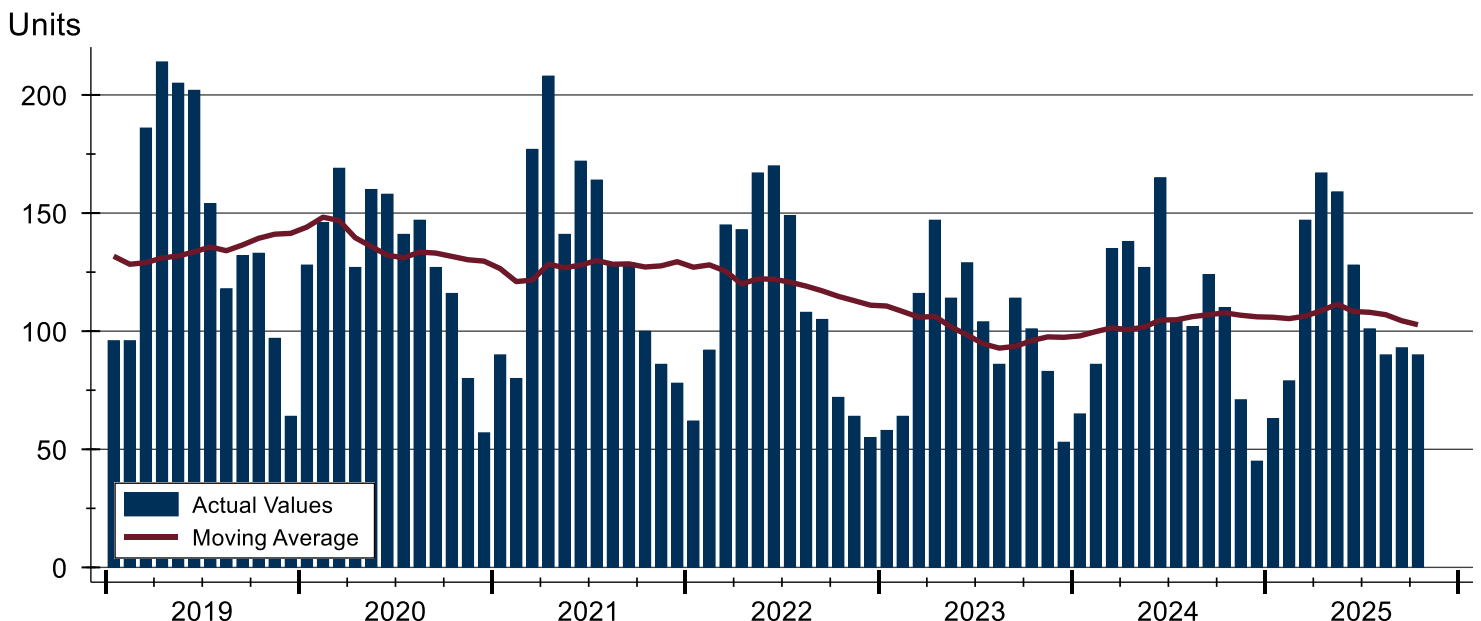
City of Lawrence New Listings Analysis

Summary Statistics for New Listings		2025	October 2024	Change
Current Month	New Listings	90	110	-18.2%
	Volume (1,000s)	35,698	37,760	-5.5%
	Average List Price	396,642	343,271	15.5%
	Median List Price	339,950	319,950	6.3%
Year-to-Date	New Listings	1,117	1,157	-3.5%
	Volume (1,000s)	435,010	412,820	5.4%
	Average List Price	389,445	356,802	9.1%
	Median List Price	325,000	319,900	1.6%

A total of 90 new listings were added in the City of Lawrence during October, down 18.2% from the same month in 2024. Year-to-date the City of Lawrence has seen 1,117 new listings.

The median list price of these homes was \$339,950 up from \$319,950 in 2024.

History of New Listings





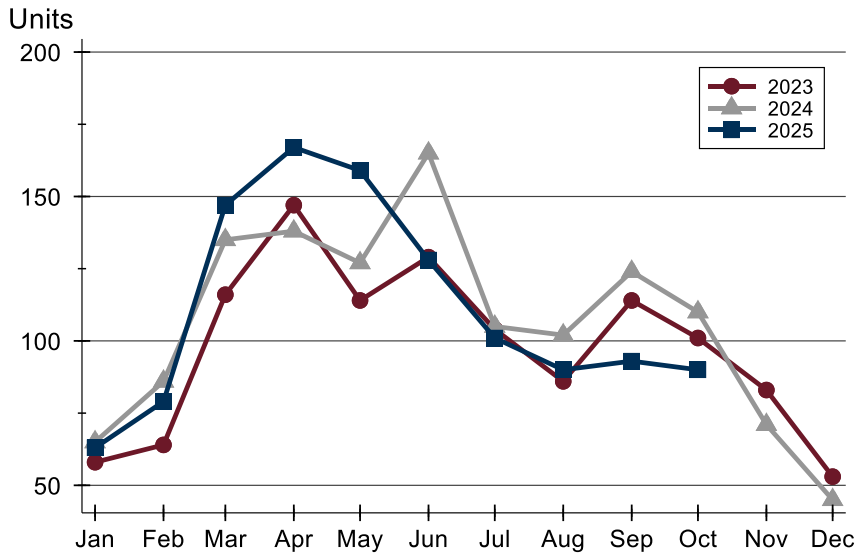
**October
2025**

Lawrence MLS Statistics



City of Lawrence New Listings Analysis

New Listings by Month



Month	2023	2024	2025
January	58	65	63
February	64	86	79
March	116	135	147
April	147	138	167
May	114	127	159
June	129	165	128
July	104	105	101
August	86	102	90
September	114	124	93
October	101	110	90
November	83	71	
December	53	45	

New Listings by Price Range

Price Range	New Listings Number	Percent	List Price Average	Median	Days on Market Avg.	Med.	Price as % of Orig. Avg.	Med.
Below \$50,000	0	0.0%	N/A	N/A	N/A	N/A	N/A	N/A
\$50,000-\$99,999	0	0.0%	N/A	N/A	N/A	N/A	N/A	N/A
\$100,000-\$149,999	3	3.3%	137,300	132,900	6	1	97.2%	100.0%
\$150,000-\$199,999	5	5.6%	177,600	190,000	13	12	99.7%	100.0%
\$200,000-\$249,999	7	7.8%	219,957	219,900	14	14	96.5%	100.0%
\$250,000-\$299,999	21	23.3%	275,536	279,450	7	5	99.8%	100.0%
\$300,000-\$349,999	14	15.6%	332,086	337,450	5	5	100.0%	100.0%
\$350,000-\$399,999	8	8.9%	368,050	360,950	15	15	99.8%	100.0%
\$400,000-\$449,999	4	4.4%	428,850	428,700	9	6	99.6%	100.0%
\$450,000-\$499,999	8	8.9%	489,063	489,450	12	9	99.6%	100.0%
\$500,000-\$599,999	8	8.9%	543,975	539,450	12	9	99.4%	100.0%
\$600,000-\$749,999	7	7.8%	639,814	629,900	17	17	99.0%	100.0%
\$750,000-\$999,999	3	3.3%	839,967	825,000	6	5	100.0%	100.0%
\$1,000,000 and up	2	2.2%	1,250,000	1,250,000	11	11	100.0%	100.0%



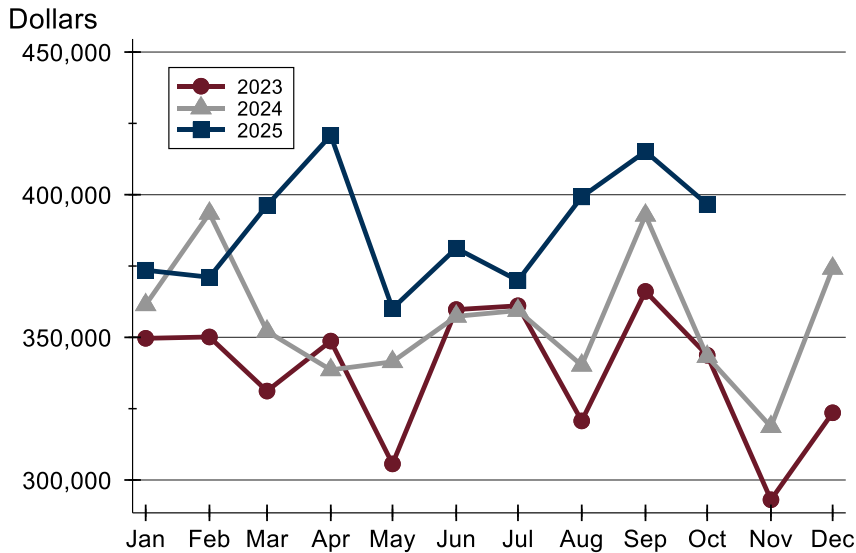
**October
2025**

Lawrence MLS Statistics



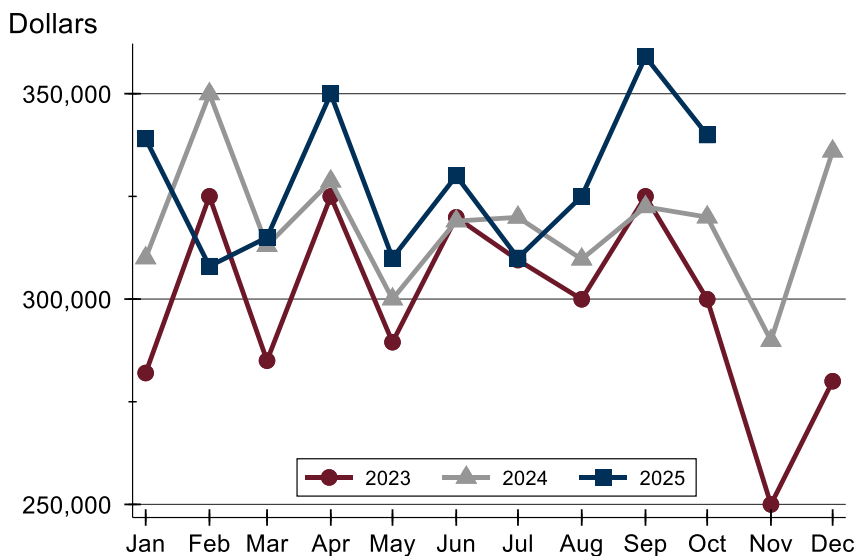
City of Lawrence New Listings Analysis

Average Price



Month	2023	2024	2025
January	349,665	361,397	373,534
February	350,138	393,460	371,070
March	331,174	352,127	396,268
April	348,694	338,599	420,813
May	305,637	341,437	360,126
June	359,731	357,359	381,241
July	361,069	359,406	369,927
August	320,710	340,199	399,233
September	366,108	392,773	415,145
October	343,722	343,271	396,642
November	293,070	318,672	
December	323,562	374,167	

Median Price



Month	2023	2024	2025
January	282,000	310,000	339,000
February	325,000	349,950	308,000
March	285,000	313,000	315,000
April	325,000	328,700	349,950
May	289,500	299,999	310,000
June	319,900	319,000	330,000
July	309,500	319,900	310,000
August	299,950	309,700	325,000
September	325,000	322,450	359,000
October	299,950	319,950	339,950
November	250,000	289,900	
December	280,000	336,000	



**October
2025**

Lawrence MLS Statistics



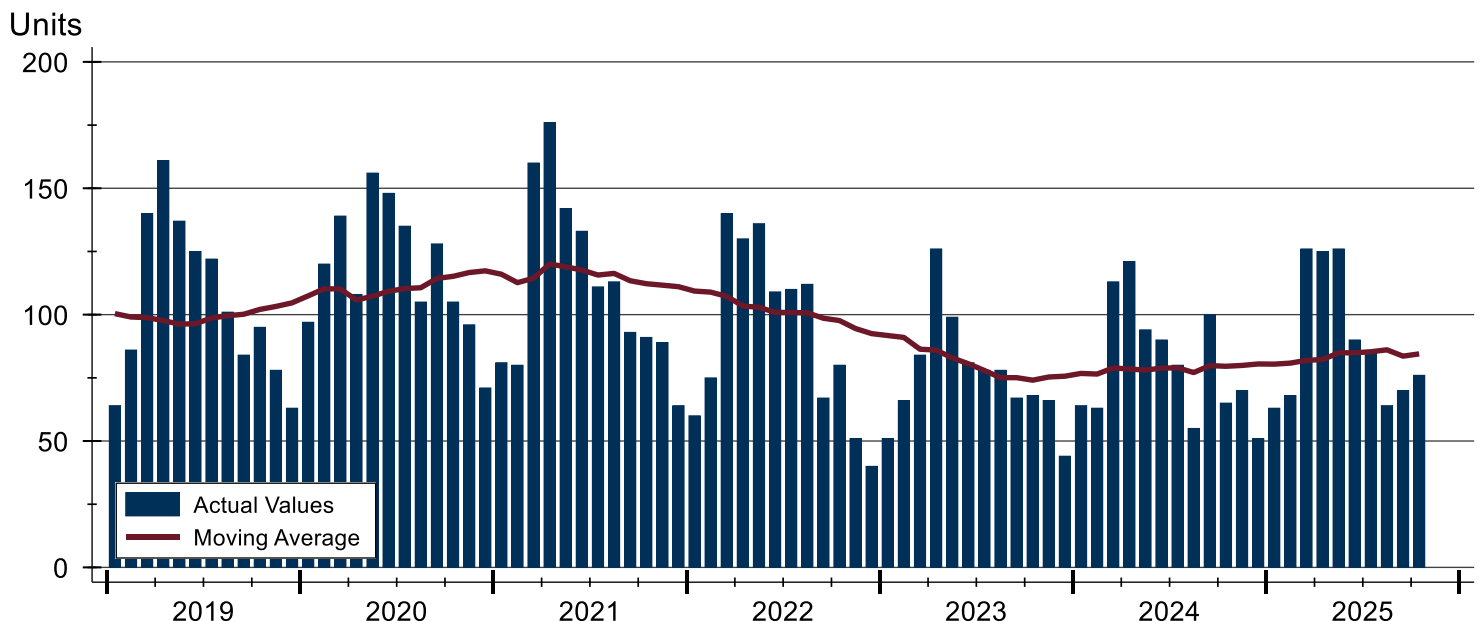
City of Lawrence Contracts Written Analysis

Summary Statistics for Contracts Written		2025	October 2024	Change	Year-to-Date		2025	2024	Change
Contracts Written		76	65	16.9%			893	845	5.7%
Volume (1,000s)		27,237	21,259	28.1%			335,283	299,196	12.1%
Average	Sale Price	358,386	327,064	9.6%			375,457	354,078	6.0%
	Days on Market	33	23	43.5%			24	23	4.3%
	Percent of Original	97.6%	97.5%	0.1%			98.4%	98.5%	-0.1%
Median	Sale Price	304,925	319,900	-4.7%			324,900	319,000	1.8%
	Days on Market	16	6	166.7%			7	7	0.0%
	Percent of Original	100.0%	98.6%	1.4%			100.0%	100.0%	0.0%

A total of 76 contracts for sale were written in the City of Lawrence during the month of October, up from 65 in 2024. The median list price of these homes was \$304,925, down from \$319,900 the prior year.

Half of the homes that went under contract in October were on the market less than 16 days, compared to 6 days in October 2024.

History of Contracts Written





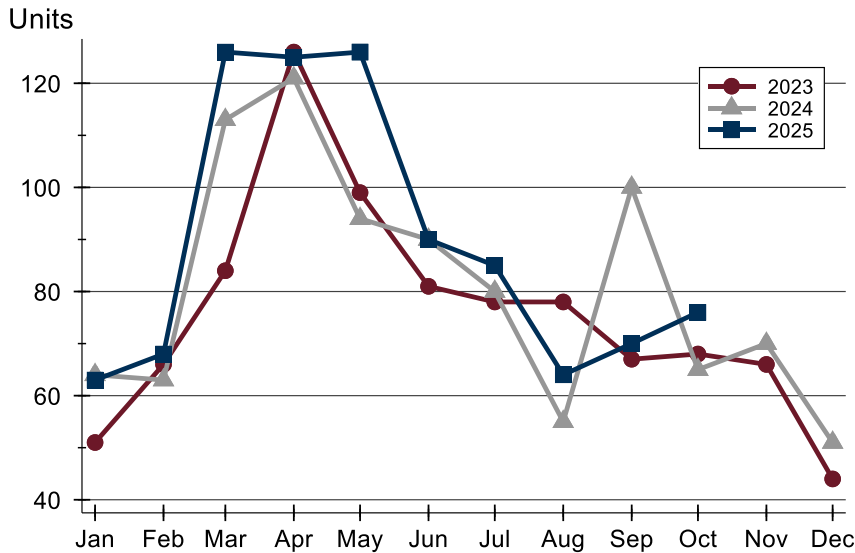
**October
2025**

Lawrence MLS Statistics



City of Lawrence Contracts Written Analysis

Contracts Written by Month



Month	2023	2024	2025
January	51	64	63
February	66	63	68
March	84	113	126
April	126	121	125
May	99	94	126
June	81	90	90
July	78	80	85
August	78	55	64
September	67	100	70
October	68	65	76
November	66	70	
December	44	51	

Contracts Written by Price Range

Price Range	Contracts Written Number	Percent	List Price Average	Median	Days on Market Avg.	Med.	Price as % of Orig. Avg.	Med.
Below \$50,000	0	0.0%	N/A	N/A	N/A	N/A	N/A	N/A
\$50,000-\$99,999	0	0.0%	N/A	N/A	N/A	N/A	N/A	N/A
\$100,000-\$149,999	4	5.3%	129,225	131,450	23	8	95.4%	95.8%
\$150,000-\$199,999	7	9.2%	179,357	184,500	19	12	98.5%	100.0%
\$200,000-\$249,999	9	11.8%	235,967	239,900	33	21	94.9%	96.2%
\$250,000-\$299,999	18	23.7%	278,906	279,500	48	28	97.3%	100.0%
\$300,000-\$349,999	8	10.5%	331,813	337,450	3	3	100.4%	100.0%
\$350,000-\$399,999	9	11.8%	376,300	378,500	34	29	96.6%	97.3%
\$400,000-\$449,999	5	6.6%	426,080	435,000	27	30	98.5%	98.3%
\$450,000-\$499,999	5	6.6%	491,560	489,000	11	11	100.0%	100.0%
\$500,000-\$599,999	3	3.9%	568,000	580,000	62	12	96.5%	100.0%
\$600,000-\$749,999	6	7.9%	643,100	639,900	46	42	99.0%	100.0%
\$750,000-\$999,999	1	1.3%	879,900	879,900	155	155	97.8%	97.8%
\$1,000,000 and up	1	1.3%	1,249,000	1,249,000	7	7	94.1%	94.1%



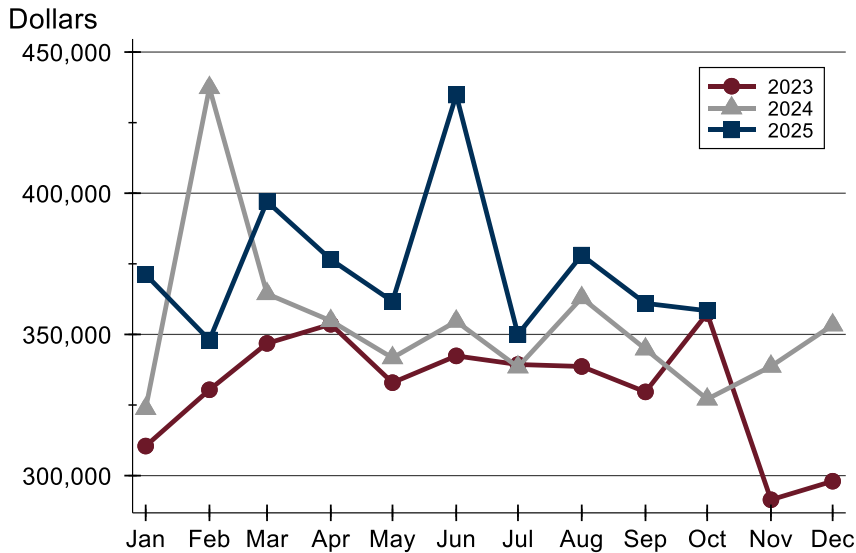
**October
2025**

Lawrence MLS Statistics



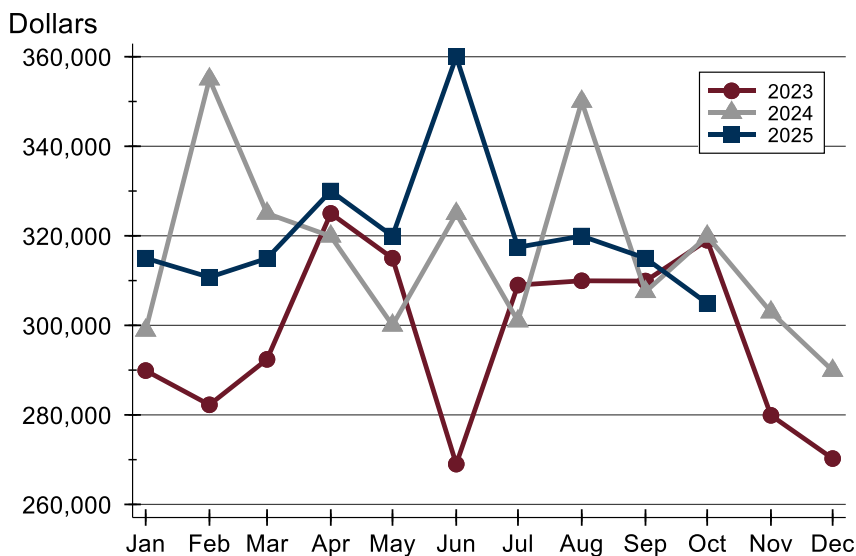
City of Lawrence Contracts Written Analysis

Average Price



Month	2023	2024	2025
January	310,467	323,707	371,215
February	330,402	437,352	348,003
March	346,825	364,385	397,088
April	353,594	354,828	376,561
May	332,913	341,694	361,708
June	342,393	354,642	434,789
July	339,349	338,454	350,006
August	338,645	362,953	378,097
September	329,643	344,812	361,013
October	357,438	327,064	358,386
November	291,443	338,691	
December	298,019	353,308	

Median Price



Month	2023	2024	2025
January	289,900	298,880	315,000
February	282,250	355,000	310,750
March	292,400	325,000	314,950
April	325,000	319,900	330,000
May	315,000	300,000	319,950
June	269,000	324,950	360,000
July	309,000	300,950	317,450
August	309,950	350,000	319,950
September	309,900	307,500	315,000
October	319,000	319,900	304,925
November	279,900	302,950	
December	270,250	289,900	



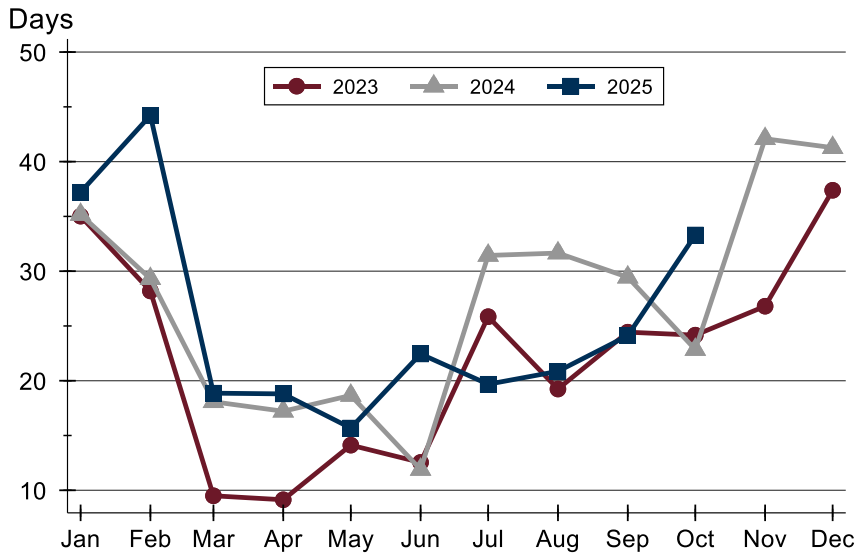
**October
2025**

Lawrence MLS Statistics



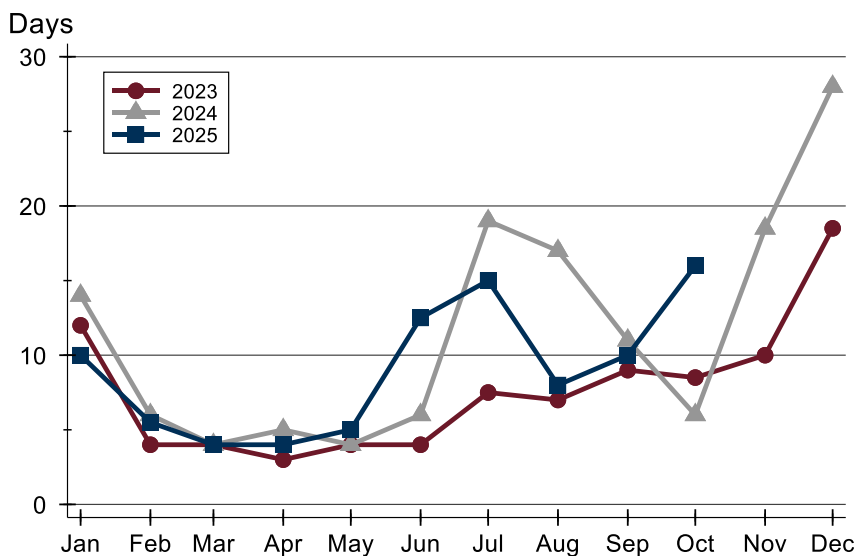
City of Lawrence Contracts Written Analysis

Average DOM



Month	2023	2024	2025
January	35	35	37
February	28	29	44
March	10	18	19
April	9	17	19
May	14	19	16
June	13	12	22
July	26	31	20
August	19	32	21
September	24	29	24
October	24	23	33
November	27	42	
December	37	41	

Median DOM



Month	2023	2024	2025
January	12	14	10
February	4	6	6
March	4	4	4
April	3	5	4
May	4	4	5
June	4	6	13
July	8	19	15
August	7	17	8
September	9	11	10
October	9	6	16
November	10	19	
December	19	28	



**October
2025**

Lawrence MLS Statistics



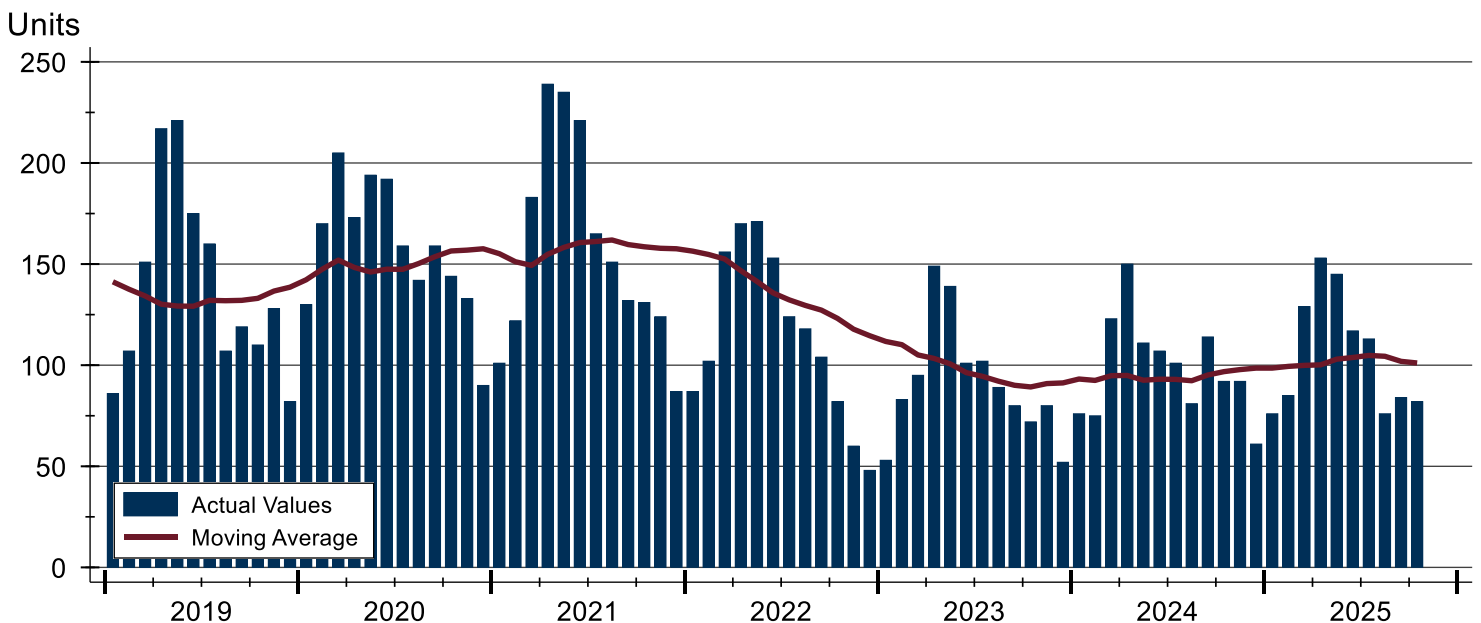
City of Lawrence Pending Contracts Analysis

Summary Statistics for Pending Contracts		End of October		
		2025	2024	Change
Pending Contracts		82	92	-10.9%
Volume (1,000s)		30,148	31,354	-3.8%
Average	List Price	367,657	340,800	7.9%
	Days on Market	30	21	42.9%
	Percent of Original	98.2%	98.6%	-0.4%
Median	List Price	319,950	319,900	0.0%
	Days on Market	15	6	150.0%
	Percent of Original	100.0%	100.0%	0.0%

A total of 82 listings in the City of Lawrence had contracts pending at the end of October, down from 92 contracts pending at the end of October 2024.

Pending contracts reflect listings with a contract in place at the end of the month. In contrast, contracts written measures the number of listings put under contract during the month.

History of Pending Contracts





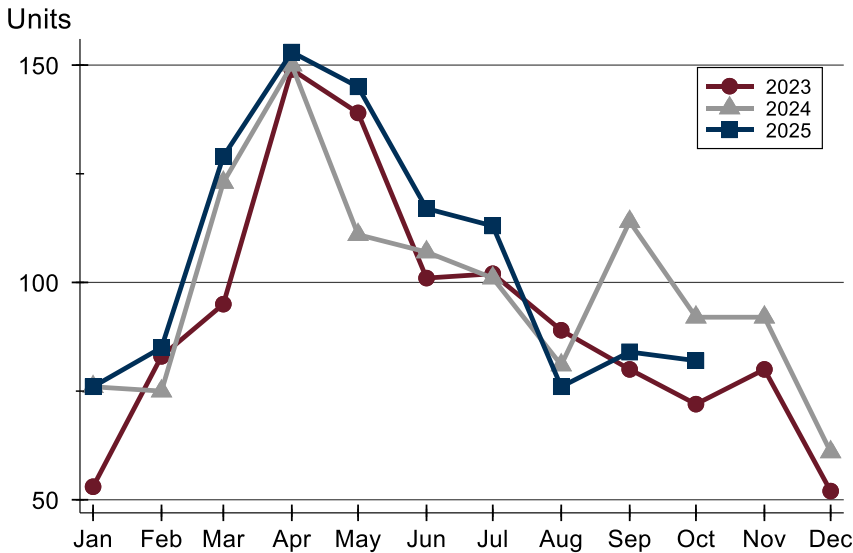
**October
2025**

Lawrence MLS Statistics



City of Lawrence Pending Contracts Analysis

Pending Contracts by Month



Month	2023	2024	2025
January	53	76	76
February	83	75	85
March	95	123	129
April	149	150	153
May	139	111	145
June	101	107	117
July	102	101	113
August	89	81	76
September	80	114	84
October	72	92	82
November	80	92	
December	52	61	

Pending Contracts by Price Range

Price Range	Pending Contracts Number	Percent	List Price Average	Median	Days on Market Avg.	Med.	Price as % of Orig. Avg.	Med.
Below \$50,000	0	0.0%	N/A	N/A	N/A	N/A	N/A	N/A
\$50,000-\$99,999	1	1.2%	89,900	89,900	4	4	100.0%	100.0%
\$100,000-\$149,999	5	6.1%	125,370	130,000	41	15	95.4%	100.0%
\$150,000-\$199,999	7	8.5%	177,671	179,900	36	28	95.3%	100.0%
\$200,000-\$249,999	8	9.8%	233,638	234,900	25	21	96.2%	100.0%
\$250,000-\$299,999	18	22.0%	280,964	281,500	36	28	97.3%	100.0%
\$300,000-\$349,999	7	8.5%	329,943	335,000	3	3	100.0%	100.0%
\$350,000-\$399,999	9	11.0%	371,756	369,500	30	27	98.2%	98.2%
\$400,000-\$449,999	5	6.1%	417,280	409,900	12	4	99.2%	100.0%
\$450,000-\$499,999	8	9.8%	482,225	484,950	18	12	98.8%	100.0%
\$500,000-\$599,999	5	6.1%	558,780	565,000	11	2	99.0%	100.0%
\$600,000-\$749,999	7	8.5%	655,371	649,900	40	36	99.8%	100.0%
\$750,000-\$999,999	1	1.2%	879,900	879,900	155	155	97.8%	97.8%
\$1,000,000 and up	1	1.2%	1,399,999	1,399,999	176	176	121.7%	121.7%



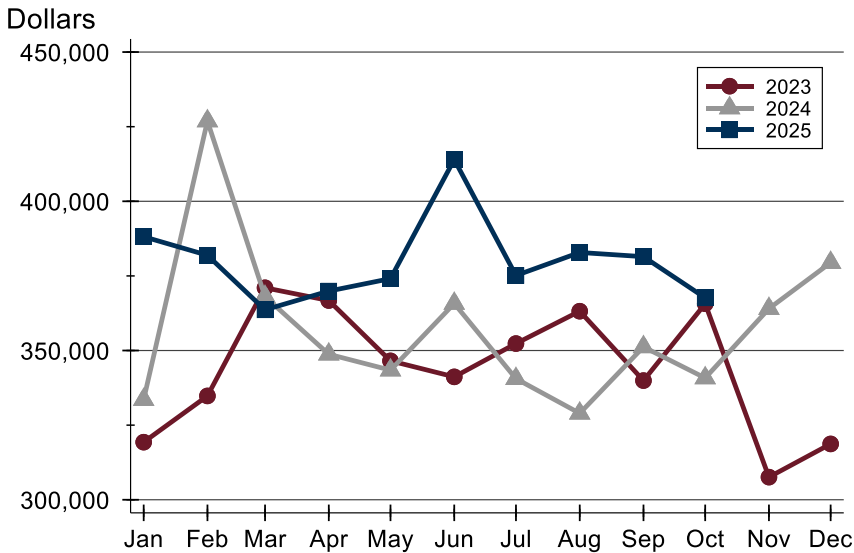
**October
2025**

Lawrence MLS Statistics



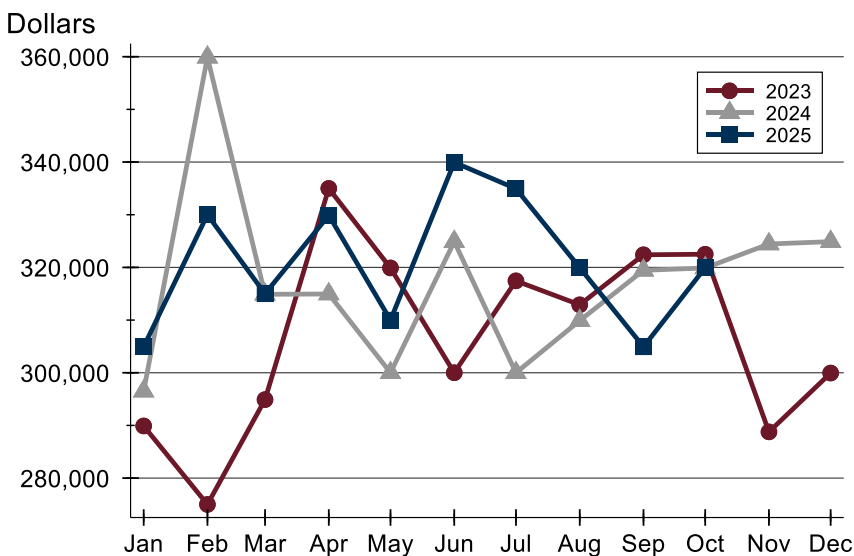
City of Lawrence Pending Contracts Analysis

Average Price



Month	2023	2024	2025
January	319,303	333,556	388,137
February	334,790	426,894	381,923
March	371,024	368,083	363,646
April	366,757	348,759	369,918
May	346,540	343,428	374,093
June	341,180	365,760	413,985
July	352,339	340,577	375,138
August	363,178	328,967	382,863
September	339,931	351,206	381,444
October	365,678	340,800	367,657
November	307,588	364,048	
December	318,710	379,455	

Median Price



Month	2023	2024	2025
January	289,900	296,500	304,950
February	275,000	359,900	330,000
March	294,900	314,900	315,000
April	335,000	314,950	329,900
May	319,900	300,000	310,000
June	300,000	324,900	339,950
July	317,450	300,000	334,950
August	312,900	309,900	319,950
September	322,400	319,450	304,925
October	322,500	319,900	319,950
November	288,775	324,450	
December	299,950	324,900	



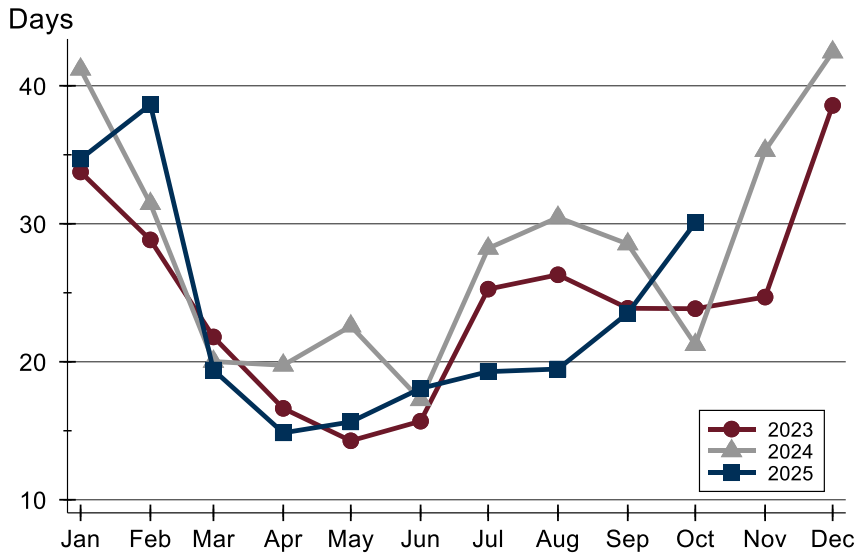
**October
2025**

Lawrence MLS Statistics



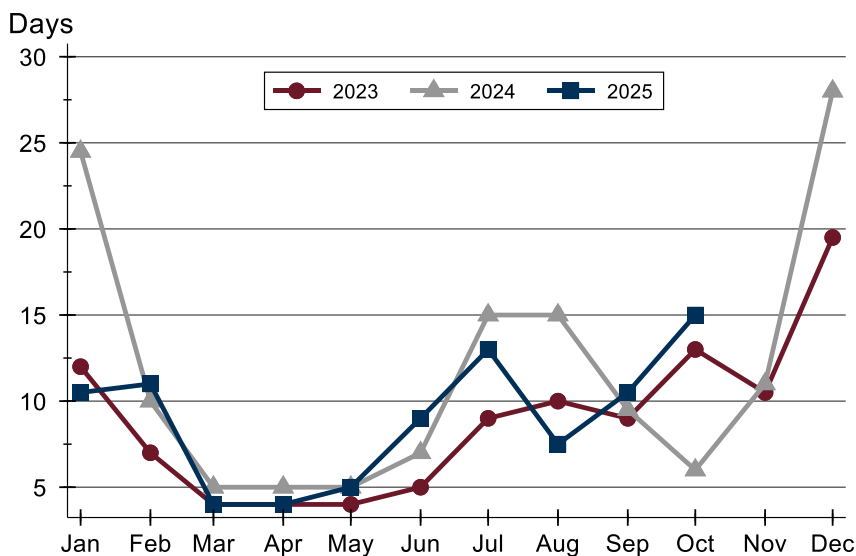
City of Lawrence Pending Contracts Analysis

Average DOM



Month	2023	2024	2025
January	34	41	35
February	29	31	39
March	22	20	19
April	17	20	15
May	14	23	16
June	16	17	18
July	25	28	19
August	26	30	19
September	24	29	24
October	24	21	30
November	25	35	
December	39	42	

Median DOM



Month	2023	2024	2025
January	12	25	11
February	7	10	11
March	4	5	4
April	4	5	4
May	4	5	5
June	5	7	9
July	9	15	13
August	10	15	8
September	9	10	11
October	13	6	15
November	11	11	
December	20	28	