



City of Lawrence Housing Report



Market Overview

City of Lawrence Home Sales Rose in August

Total home sales in the City of Lawrence rose by 26.6% last month to 100 units, compared to 79 units in August 2024. Total sales volume was \$37.4 million, up 41.2% from a year earlier.

The median sale price in August was \$326,250, up from \$299,900 a year earlier. Homes that sold in August were typically on the market for 14 days and sold for 99.4% of their list prices.

City of Lawrence Active Listings Down at End of August

The total number of active listings in the City of Lawrence at the end of August was 145 units, down from 190 at the same point in 2024. This represents a 1.7 months' supply of homes available for sale. The median list price of homes on the market at the end of August was \$315,000.

During August, a total of 66 contracts were written up from 55 in August 2024. At the end of the month, there were 76 contracts still pending.

Report Contents

- Summary Statistics – Page 2
- Closed Listing Analysis – Page 3
- Active Listings Analysis – Page 7
- Months' Supply Analysis – Page 11
- New Listings Analysis – Page 12
- Contracts Written Analysis – Page 15
- Pending Contracts Analysis – Page 19

Contact Information

Rob Hulse, Executive Vice-President
 Lawrence Board of REALTORS®
 3838 W. 6th Street (at Monterey)
 Lawrence, KS 66049
 785-842-1843
Rob@LawrenceRealtor.com
www.LawrenceRealtor.com



City of Lawrence Summary Statistics

August MLS Statistics Three-year History		Current Month			Year-to-Date		
		2025	2024	2023	2025	2024	2023
Home Sales Change from prior year	100 26.6%	79 -13.2%	91 -22.9%	737 12.3%	656 3.3%	635 -24.4%	
Active Listings Change from prior year	145 -23.7%	190 59.7%	119 6.3%	N/A	N/A	N/A	
Months' Supply Change from prior year	1.7 -29.2%	2.4 60.0%	1.5 36.4%	N/A	N/A	N/A	
New Listings Change from prior year	90 -11.8%	102 18.6%	86 -20.4%	934 1.2%	923 12.8%	818 -21.0%	
Contracts Written Change from prior year	66 20.0%	55 -29.5%	78 -30.4%	749 10.1%	680 2.6%	663 -24.0%	
Pending Contracts Change from prior year	76 -6.2%	81 -9.0%	89 -24.6%	N/A	N/A	N/A	
Sales Volume (1,000s) Change from prior year	37,380 41.2%	26,480 -11.8%	30,038 -24.3%	275,552 19.8%	230,005 6.8%	215,456 -22.8%	
Average	Sale Price Change from prior year	373,798 11.5%	335,185 1.5%	330,085 -1.8%	373,884 6.6%	350,617 3.3%	339,300 2.1%
	List Price of Actives Change from prior year	415,012 9.0%	380,883 -4.4%	398,505 4.2%	N/A	N/A	N/A
	Days on Market Change from prior year	21 -12.5%	24 20.0%	20 66.7%	25 13.6%	22 29.4%	17 21.4%
	Percent of List Change from prior year	98.3% 0.1%	98.2% -2.0%	100.2% 0.4%	99.5% 0.2%	99.3% -1.6%	100.9% -1.4%
	Percent of Original Change from prior year	96.5% -0.4%	96.9% -2.4%	99.3% 0.3%	98.6% -0.1%	98.7% -1.7%	100.4% -1.4%
Median	Sale Price Change from prior year	326,250 8.8%	299,900 -4.8%	315,000 7.7%	325,000 3.2%	315,000 4.3%	302,000 2.4%
	List Price of Actives Change from prior year	315,000 -3.1%	325,000 -16.6%	389,900 12.2%	N/A	N/A	N/A
	Days on Market Change from prior year	14 -12.5%	16 220.0%	5 -28.6%	6 0.0%	6 50.0%	4 0.0%
	Percent of List Change from prior year	99.4% 0.8%	98.6% -1.4%	100.0% 0.0%	100.0% 0.0%	100.0% 0.0%	100.0% 0.0%
	Percent of Original Change from prior year	98.8% 0.5%	98.3% -1.7%	100.0% 0.0%	100.0% 0.0%	100.0% 0.0%	100.0% 0.0%

Note: Year-to-date statistics cannot be calculated for Active Listings, Months' Supply and Pending Contracts.



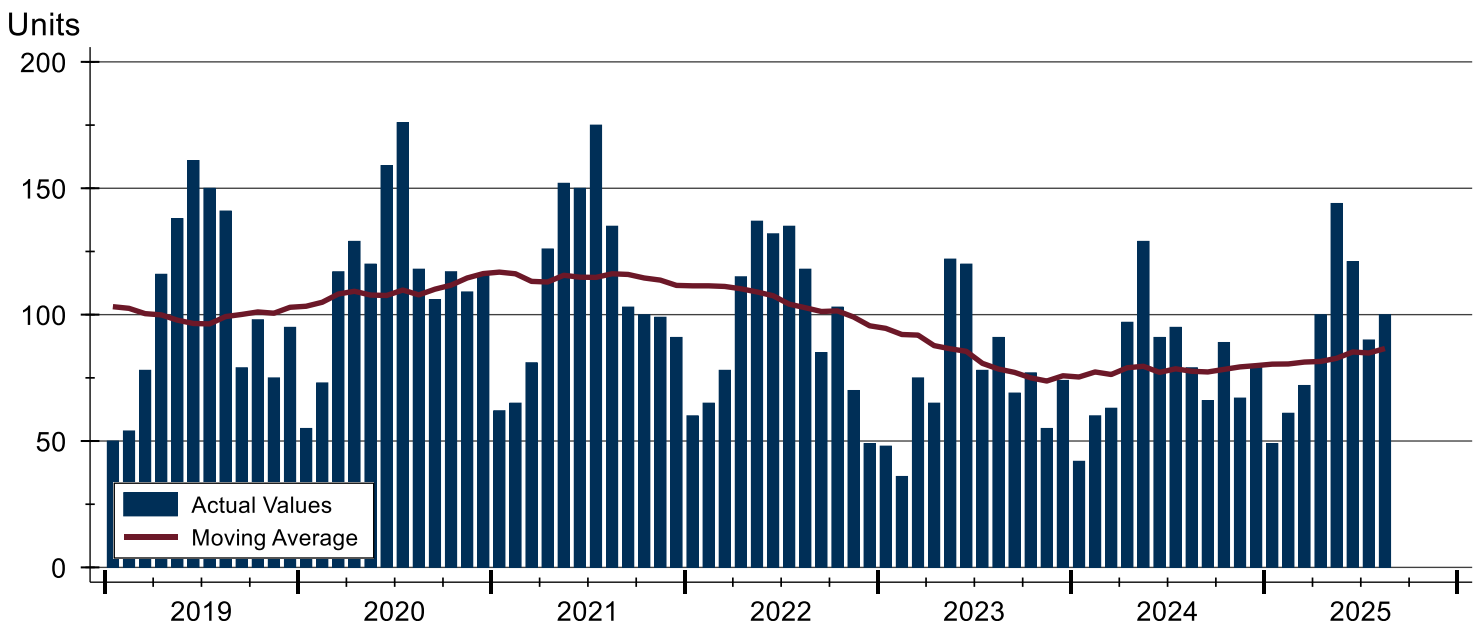
City of Lawrence Closed Listings Analysis

Summary Statistics for Closed Listings		2025	August 2024	Change	2025	Year-to-Date 2024	Change
Closed Listings		100	79	26.6%	737	656	12.3%
Volume (1,000s)		37,380	26,480	41.2%	275,552	230,005	19.8%
Months' Supply		1.7	2.4	-29.2%	N/A	N/A	N/A
Average	Sale Price	373,798	335,185	11.5%	373,884	350,617	6.6%
	Days on Market	21	24	-12.5%	25	22	13.6%
	Percent of List	98.3%	98.2%	0.1%	99.5%	99.3%	0.2%
	Percent of Original	96.5%	96.9%	-0.4%	98.6%	98.7%	-0.1%
Median	Sale Price	326,250	299,900	8.8%	325,000	315,000	3.2%
	Days on Market	14	16	-12.5%	6	6	0.0%
	Percent of List	99.4%	98.6%	0.8%	100.0%	100.0%	0.0%
	Percent of Original	98.8%	98.3%	0.5%	100.0%	100.0%	0.0%

A total of 100 homes sold in the City of Lawrence in August, up from 79 units in August 2024. Total sales volume rose to \$37.4 million compared to \$26.5 million in the previous year.

The median sales price in August was \$326,250, up 8.8% compared to the prior year. Median days on market was 14 days, up from 11 days in July, but down from 16 in August 2024.

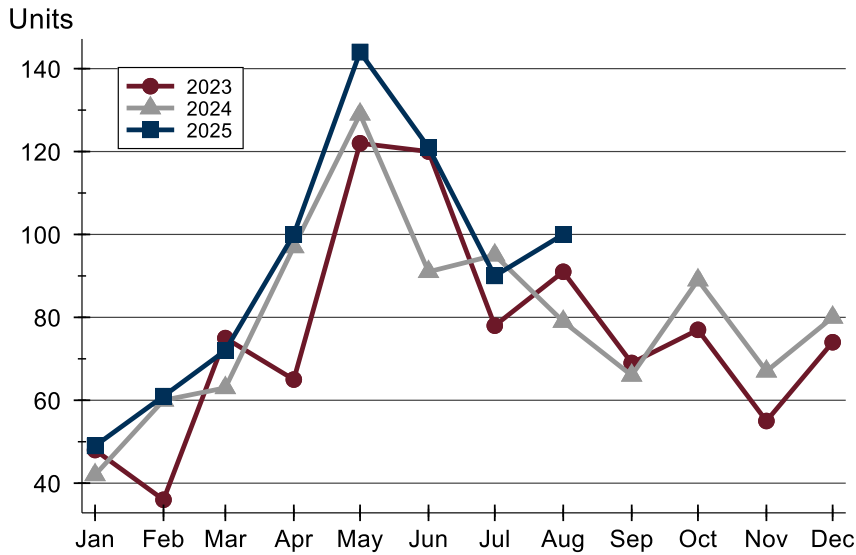
History of Closed Listings





City of Lawrence Closed Listings Analysis

Closed Listings by Month



Month	2023	2024	2025
January	48	42	49
February	36	60	61
March	75	63	72
April	65	97	100
May	122	129	144
June	120	91	121
July	78	95	90
August	91	79	100
September	69	66	
October	77	89	
November	55	67	
December	74	80	

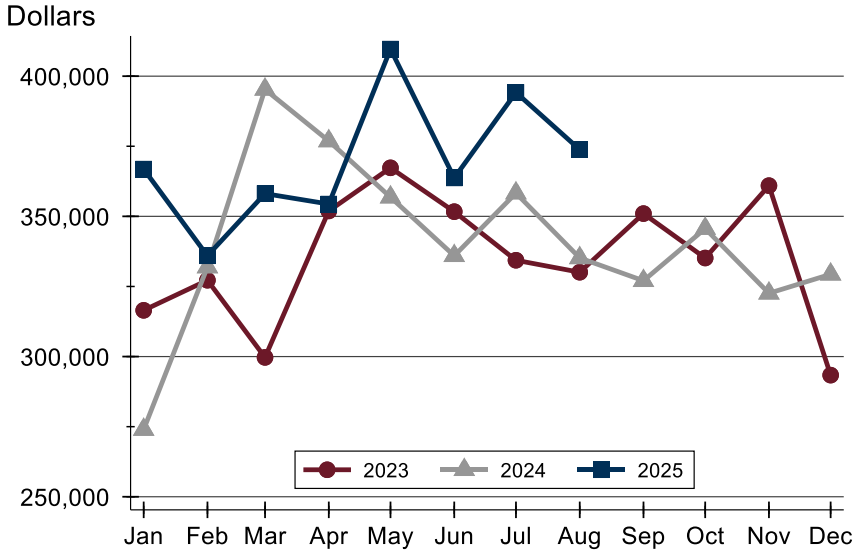
Closed Listings by Price Range

Price Range	Sales		Months' Supply	Sale Price		Days on Market		Price as % of List		Price as % of Orig.	
	Number	Percent		Average	Median	Avg.	Med.	Avg.	Med.	Avg.	Med.
Below \$50,000	0	0.0%	N/A	N/A	N/A	N/A	N/A	N/A	N/A	N/A	N/A
\$50,000-\$99,999	0	0.0%	N/A	N/A	N/A	N/A	N/A	N/A	N/A	N/A	N/A
\$100,000-\$149,999	4	4.0%	4.2	133,578	135,000	12	6	98.3%	98.5%	96.6%	98.5%
\$150,000-\$199,999	4	4.0%	0.9	182,850	181,250	21	9	99.1%	99.0%	92.5%	97.7%
\$200,000-\$249,999	10	10.0%	1.0	229,400	231,750	26	26	96.1%	97.2%	93.7%	94.4%
\$250,000-\$299,999	14	14.0%	2.2	273,357	272,000	17	11	99.4%	100.0%	97.5%	99.6%
\$300,000-\$349,999	26	26.0%	0.9	319,180	315,500	24	12	98.7%	100.0%	97.0%	100.0%
\$350,000-\$399,999	13	13.0%	0.8	375,885	380,000	20	15	98.4%	99.4%	97.2%	99.1%
\$400,000-\$449,999	4	4.0%	0.5	431,225	432,500	20	21	98.3%	98.3%	97.8%	98.3%
\$450,000-\$499,999	9	9.0%	2.1	469,844	471,000	21	23	98.8%	100.0%	97.7%	98.0%
\$500,000-\$599,999	6	6.0%	2.6	562,333	565,000	10	1	98.5%	100.0%	97.3%	99.2%
\$600,000-\$749,999	6	6.0%	2.7	674,565	675,000	13	14	98.4%	98.1%	97.3%	97.7%
\$750,000-\$999,999	4	4.0%	2.7	858,250	869,000	55	48	95.3%	94.0%	90.8%	91.4%
\$1,000,000 and up	0	0.0%	N/A	N/A	N/A	N/A	N/A	N/A	N/A	N/A	N/A



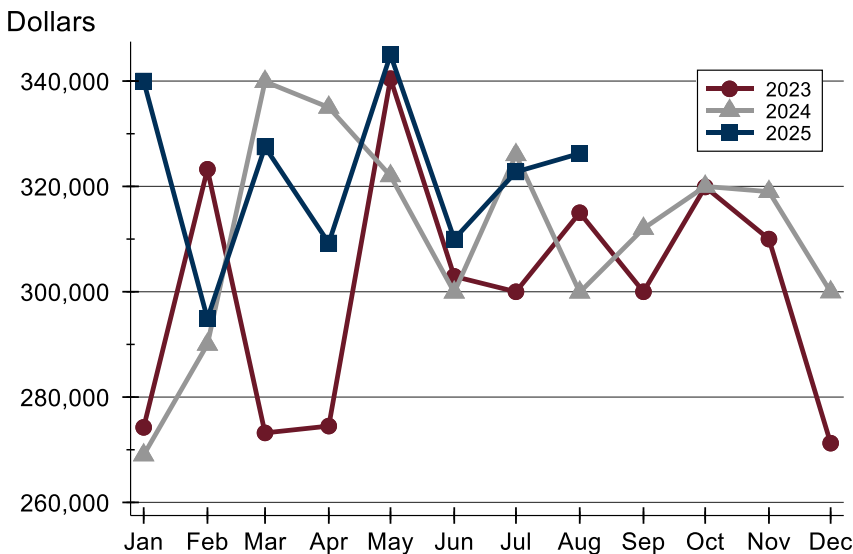
City of Lawrence Closed Listings Analysis

Average Price



Month	2023	2024	2025
January	316,490	273,973	366,863
February	327,216	331,921	335,951
March	299,705	395,294	358,114
April	351,932	376,885	354,396
May	367,315	356,843	409,665
June	351,680	335,946	363,717
July	334,347	358,291	394,198
August	330,085	335,185	373,798
September	350,988	327,043	
October	335,150	345,662	
November	360,959	322,575	
December	293,378	329,339	

Median Price

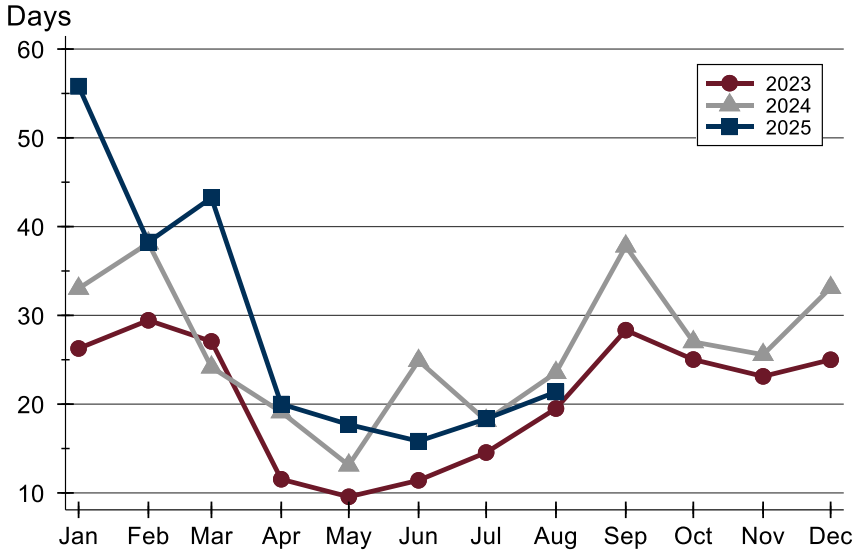


Month	2023	2024	2025
January	274,250	269,000	340,000
February	323,250	290,000	294,900
March	273,200	339,900	327,500
April	274,500	335,000	309,253
May	340,450	322,000	345,000
June	302,915	299,900	310,000
July	300,000	326,000	322,750
August	315,000	299,900	326,250
September	300,000	312,000	
October	319,900	320,000	
November	310,000	319,000	
December	271,250	299,950	



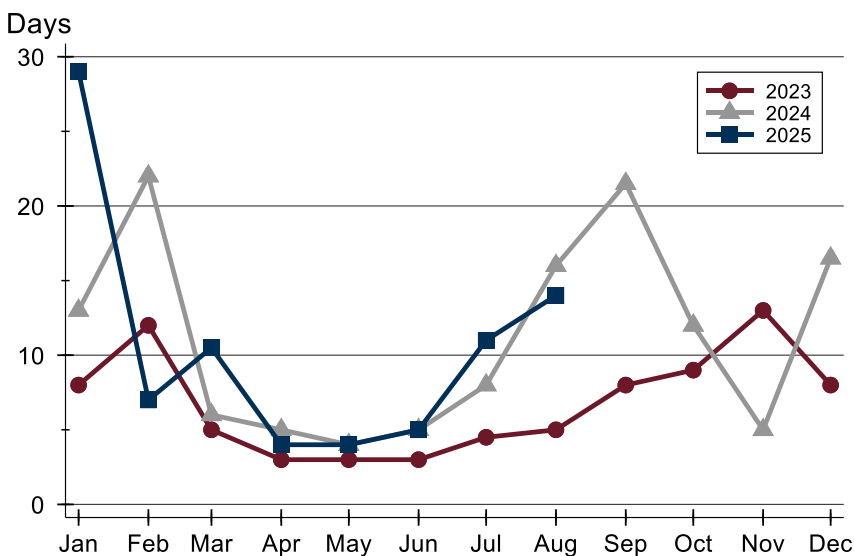
City of Lawrence Closed Listings Analysis

Average DOM



Month	2023	2024	2025
January	26	33	56
February	29	38	38
March	27	24	43
April	12	19	20
May	10	13	18
June	11	25	16
July	15	18	18
August	20	24	21
September	28	38	28
October	25	27	25
November	23	26	23
December	25	33	25

Median DOM



Month	2023	2024	2025
January	8	13	29
February	12	22	7
March	5	6	11
April	3	5	4
May	3	4	4
June	3	5	5
July	5	8	11
August	5	16	14
September	8	22	8
October	9	12	9
November	13	5	13
December	8	17	8



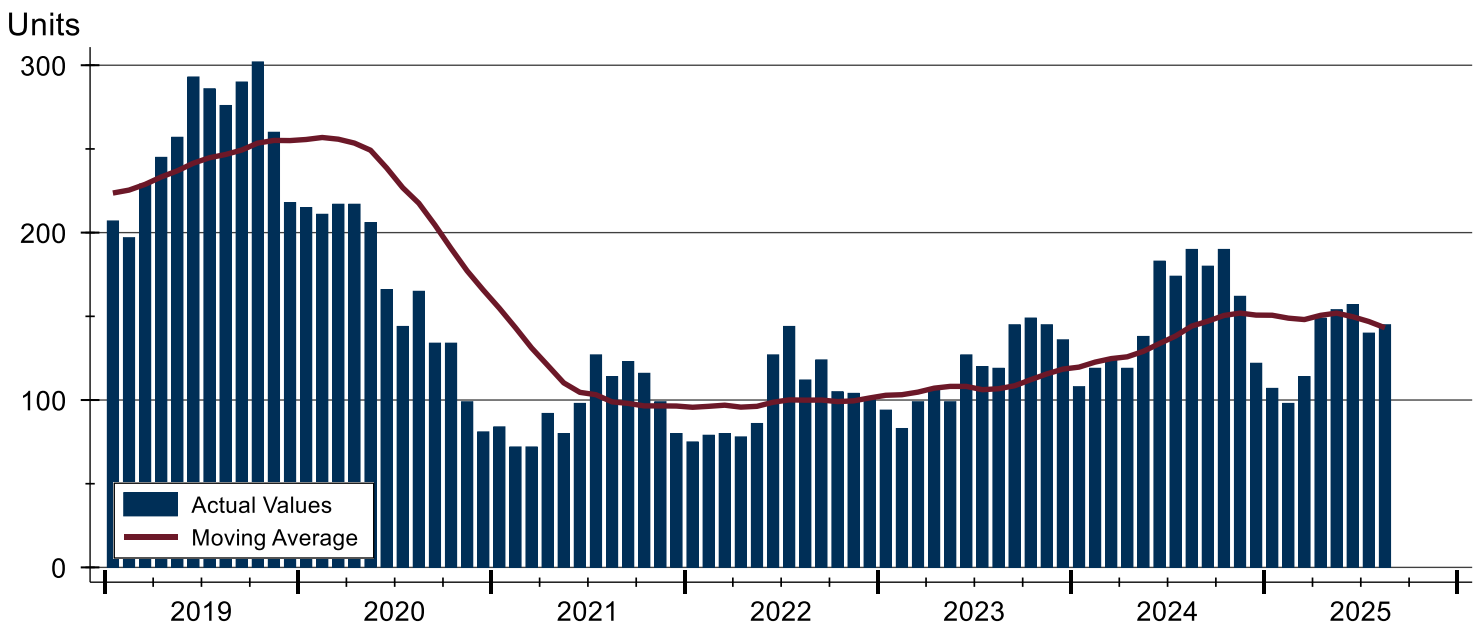
City of Lawrence Active Listings Analysis

Summary Statistics for Active Listings		2025	End of August 2024	Change
Active Listings		145	190	-23.7%
Volume (1,000s)		60,177	72,368	-16.8%
Months' Supply		1.7	2.4	-29.2%
Average	List Price	415,012	380,883	9.0%
	Days on Market	44	55	-20.0%
	Percent of Original	98.0%	98.4%	-0.4%
Median	List Price	315,000	325,000	-3.1%
	Days on Market	19	40	-52.5%
	Percent of Original	100.0%	100.0%	0.0%

A total of 145 homes were available for sale in the City of Lawrence at the end of August. This represents a 1.7 months' supply of active listings.

The median list price of homes on the market at the end of August was \$315,000, down 3.1% from 2024. The typical time on market for active listings was 19 days, down from 40 days a year earlier.

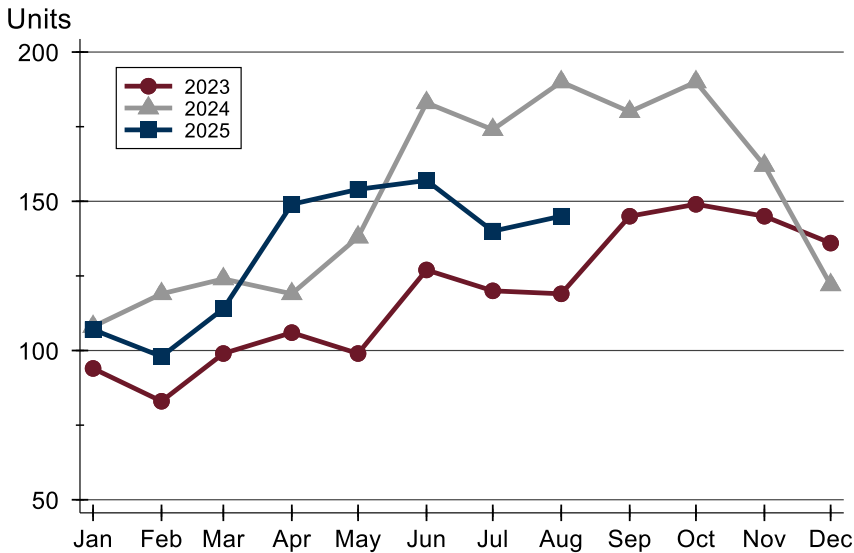
History of Active Listings





City of Lawrence Active Listings Analysis

Active Listings by Month



Month	2023	2024	2025
January	94	108	107
February	83	119	98
March	99	124	114
April	106	119	149
May	99	138	154
June	127	183	157
July	120	174	140
August	119	190	145
September	145	180	
October	149	190	
November	145	162	
December	136	122	

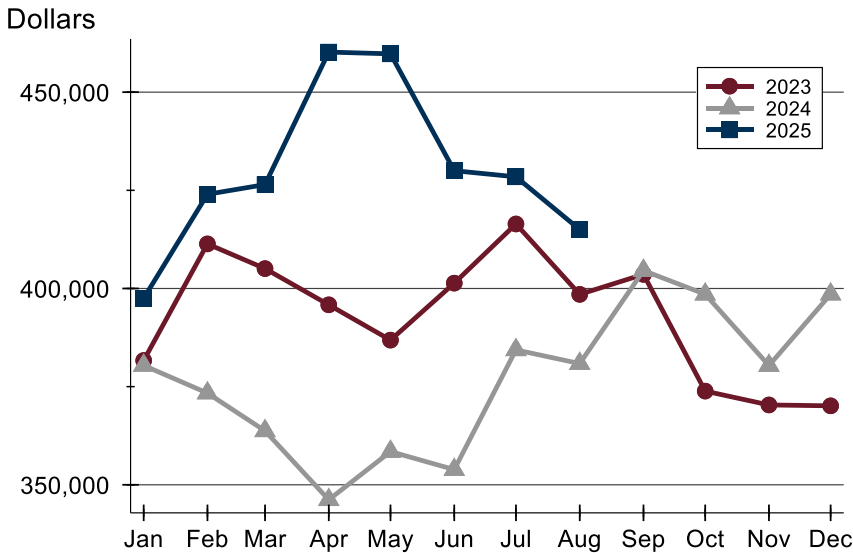
Active Listings by Price Range

Price Range	Active Listings Number	Active Listings Percent	Months' Supply	List Price Average	List Price Median	Days on Market Avg.	Days on Market Med.	Price as % of Orig. Avg.	Price as % of Orig. Med.
Below \$50,000	3	2.1%	N/A	1,500	1,500	47	31	99.0%	100.0%
\$50,000-\$99,999	4	2.8%	N/A	84,905	86,725	60	46	92.8%	99.1%
\$100,000-\$149,999	12	8.3%	4.2	130,058	129,000	33	16	95.3%	100.0%
\$150,000-\$199,999	6	4.1%	0.9	188,683	192,450	23	16	98.9%	100.0%
\$200,000-\$249,999	12	8.3%	1.0	234,008	232,150	36	24	99.0%	100.0%
\$250,000-\$299,999	31	21.4%	2.2	282,302	283,900	42	19	97.9%	100.0%
\$300,000-\$349,999	15	10.3%	0.9	325,407	325,000	24	23	99.0%	100.0%
\$350,000-\$399,999	8	5.5%	0.8	381,738	387,450	44	36	98.1%	100.0%
\$400,000-\$449,999	4	2.8%	0.5	423,225	422,450	4	4	100.0%	100.0%
\$450,000-\$499,999	10	6.9%	2.1	475,150	476,950	38	22	98.1%	100.0%
\$500,000-\$599,999	18	12.4%	2.6	562,300	562,450	33	6	98.7%	100.0%
\$600,000-\$749,999	10	6.9%	2.7	679,670	664,500	60	13	97.7%	99.3%
\$750,000-\$999,999	5	3.4%	2.7	887,980	879,900	51	33	98.6%	100.0%
\$1,000,000 and up	7	4.8%	N/A	1,406,141	1,399,999	168	45	99.0%	100.0%



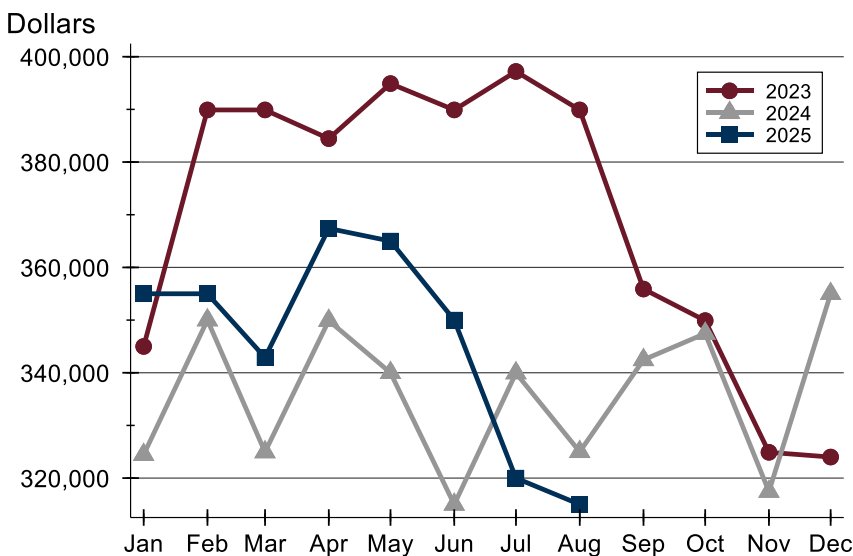
City of Lawrence Active Listings Analysis

Average Price



Month	2023	2024	2025
January	381,662	380,405	397,492
February	411,359	373,361	423,998
March	405,067	363,744	426,466
April	395,842	346,189	460,216
May	386,853	358,466	459,766
June	401,362	353,875	430,003
July	416,435	384,366	428,439
August	398,505	380,883	415,012
September	403,598	404,570	
October	373,865	398,530	
November	370,337	380,374	
December	370,118	398,546	

Median Price

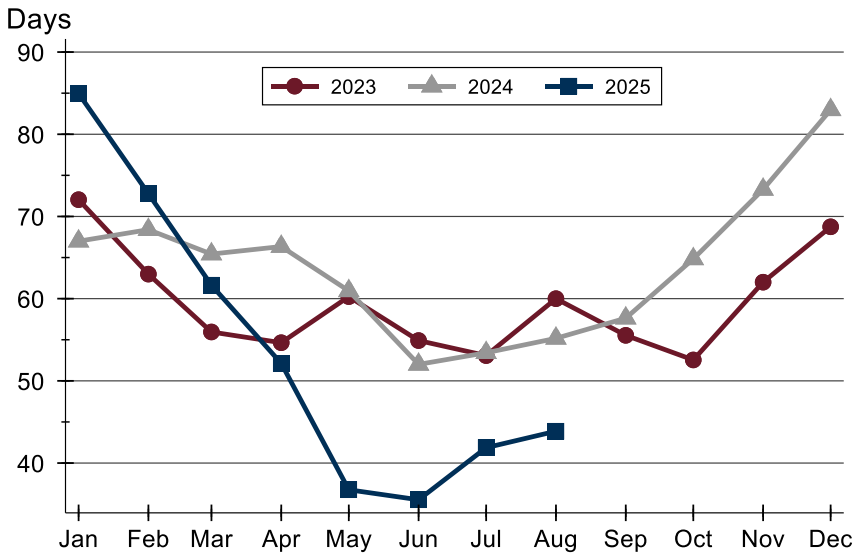


Month	2023	2024	2025
January	345,000	324,450	355,000
February	389,900	350,000	355,000
March	389,900	324,950	342,900
April	384,450	349,900	367,400
May	394,900	340,000	365,000
June	389,900	315,000	350,000
July	397,200	339,950	320,000
August	389,900	325,000	315,000
September	355,900	342,450	
October	349,900	347,450	
November	324,900	317,450	
December	324,000	355,000	



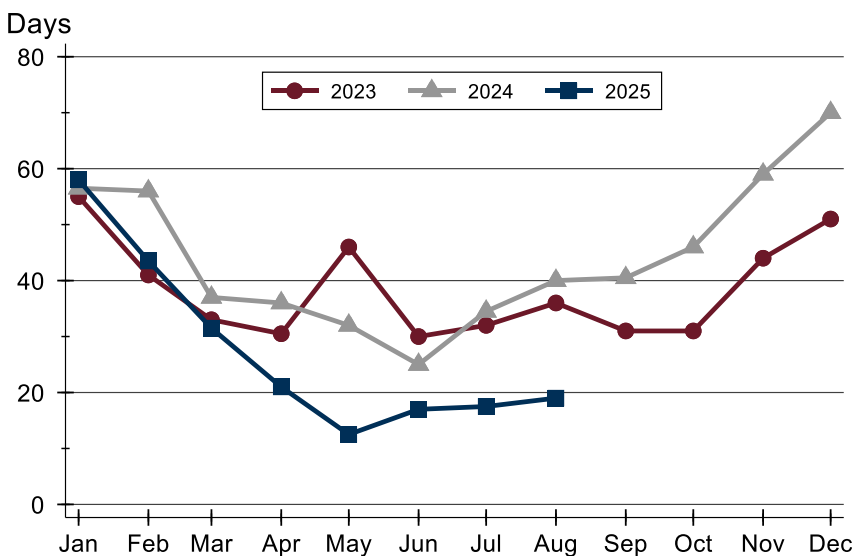
City of Lawrence Active Listings Analysis

Average DOM



Month	2023	2024	2025
January	72	67	85
February	63	68	73
March	56	65	62
April	55	66	52
May	60	61	37
June	55	52	36
July	53	53	42
August	60	55	44
September	56	58	
October	53	65	
November	62	73	
December	69	83	

Median DOM

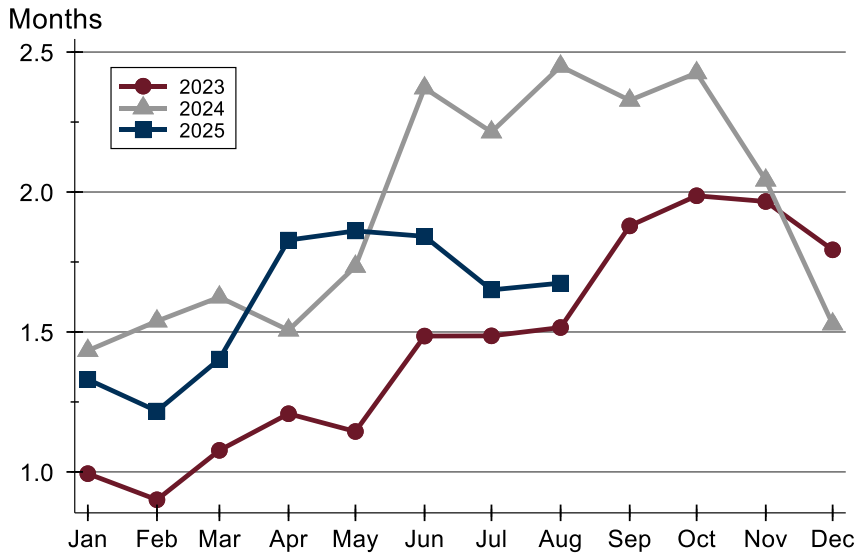


Month	2023	2024	2025
January	55	57	58
February	41	56	44
March	33	37	32
April	31	36	21
May	46	32	13
June	30	25	17
July	32	35	18
August	36	40	19
September	31	41	
October	31	46	
November	44	59	
December	51	70	



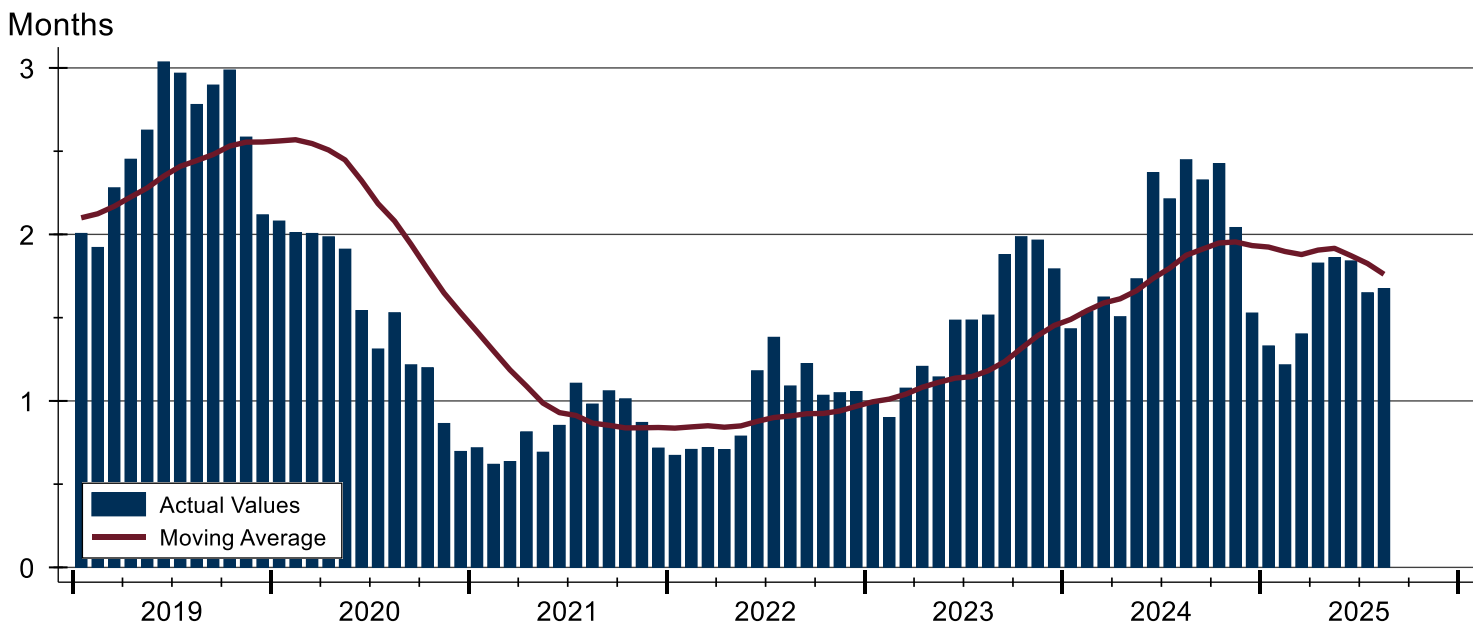
City of Lawrence Months' Supply Analysis

Months' Supply by Month



Month	2023	2024	2025
January	1.0	1.4	1.3
February	0.9	1.5	1.2
March	1.1	1.6	1.4
April	1.2	1.5	1.8
May	1.1	1.7	1.9
June	1.5	2.4	1.8
July	1.5	2.2	1.7
August	1.5	2.4	1.7
September	1.9	2.3	
October	2.0	2.4	
November	2.0	2.0	
December	1.8	1.5	

History of Month's Supply





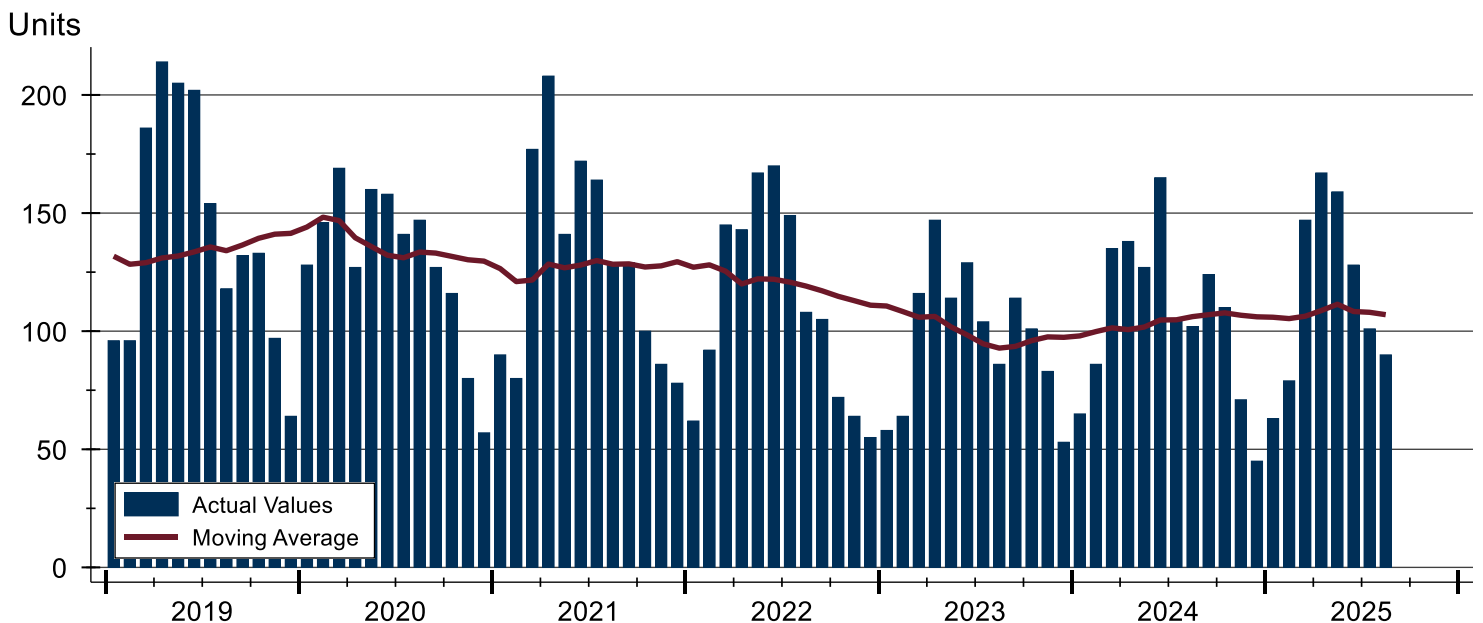
City of Lawrence New Listings Analysis

Summary Statistics for New Listings		2025	August 2024	Change
Current Month	New Listings	90	102	-11.8%
	Volume (1,000s)	35,889	34,700	3.4%
	Average List Price	398,767	340,199	17.2%
	Median List Price	325,000	309,700	4.9%
Year-to-Date	New Listings	934	923	1.2%
	Volume (1,000s)	360,996	326,357	10.6%
	Average List Price	386,505	353,583	9.3%
	Median List Price	323,700	319,000	1.5%

A total of 90 new listings were added in the City of Lawrence during August, down 11.8% from the same month in 2024. Year-to-date the City of Lawrence has seen 934 new listings.

The median list price of these homes was \$325,000 up from \$309,700 in 2024.

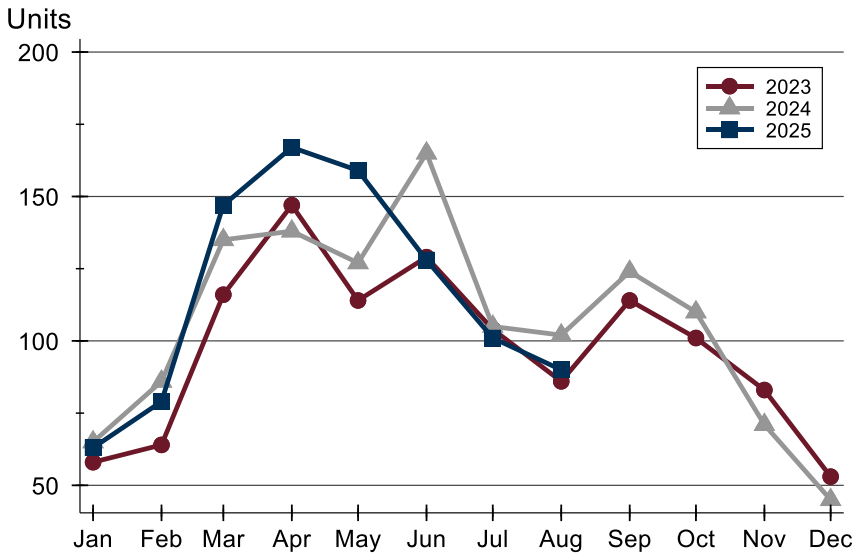
History of New Listings





City of Lawrence New Listings Analysis

New Listings by Month



Month	2023	2024	2025
January	58	65	63
February	64	86	79
March	116	135	147
April	147	138	167
May	114	127	159
June	129	165	128
July	104	105	101
August	86	102	90
September	114	124	
October	101	110	
November	83	71	
December	53	45	

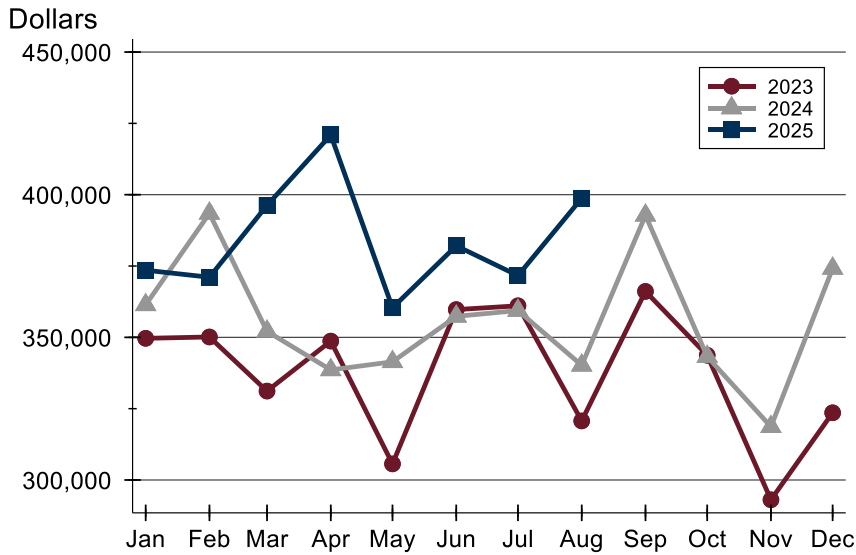
New Listings by Price Range

Price Range	New Listings		List Price		Days on Market		Price as % of Orig.	
	Number	Percent	Average	Median	Avg.	Med.	Avg.	Med.
Below \$50,000	0	0.0%	N/A	N/A	N/A	N/A	N/A	N/A
\$50,000-\$99,999	0	0.0%	N/A	N/A	N/A	N/A	N/A	N/A
\$100,000-\$149,999	2	2.2%	125,950	125,950	4	4	100.0%	100.0%
\$150,000-\$199,999	5	5.6%	192,440	189,900	14	11	98.2%	100.0%
\$200,000-\$249,999	9	10.0%	226,489	230,000	7	7	101.2%	100.0%
\$250,000-\$299,999	24	26.7%	278,454	279,900	12	7	99.5%	100.0%
\$300,000-\$349,999	12	13.3%	330,025	333,450	9	6	99.8%	100.0%
\$350,000-\$399,999	7	7.8%	381,357	379,900	7	8	100.0%	100.0%
\$400,000-\$449,999	5	5.6%	421,580	415,000	11	8	100.7%	100.0%
\$450,000-\$499,999	6	6.7%	468,317	465,000	5	5	100.0%	100.0%
\$500,000-\$599,999	9	10.0%	561,633	564,900	12	12	99.2%	100.0%
\$600,000-\$749,999	6	6.7%	660,733	642,450	11	7	99.6%	100.0%
\$750,000-\$999,999	4	4.4%	896,975	899,950	7	7	100.0%	100.0%
\$1,000,000 and up	1	1.1%	1,799,000	1,799,000	7	7	100.0%	100.0%



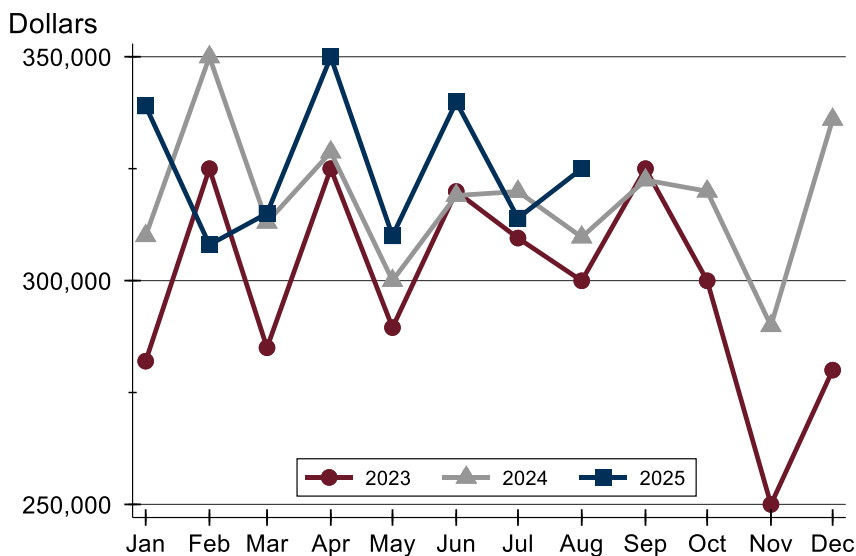
City of Lawrence New Listings Analysis

Average Price



Month	2023	2024	2025
January	349,665	361,397	373,534
February	350,138	393,460	371,070
March	331,174	352,127	396,268
April	348,694	338,599	420,934
May	305,637	341,437	360,365
June	359,731	357,359	382,094
July	361,069	359,406	371,647
August	320,710	340,199	398,767
September	366,108	392,773	
October	343,722	343,271	
November	293,070	318,672	
December	323,562	374,167	

Median Price



Month	2023	2024	2025
January	282,000	310,000	339,000
February	325,000	349,950	308,000
March	285,000	313,000	315,000
April	325,000	328,700	349,950
May	289,500	299,999	310,000
June	319,900	319,000	339,900
July	309,500	319,900	313,950
August	299,950	309,700	325,000
September	325,000	322,450	
October	299,950	319,950	
November	250,000	289,900	
December	280,000	336,000	



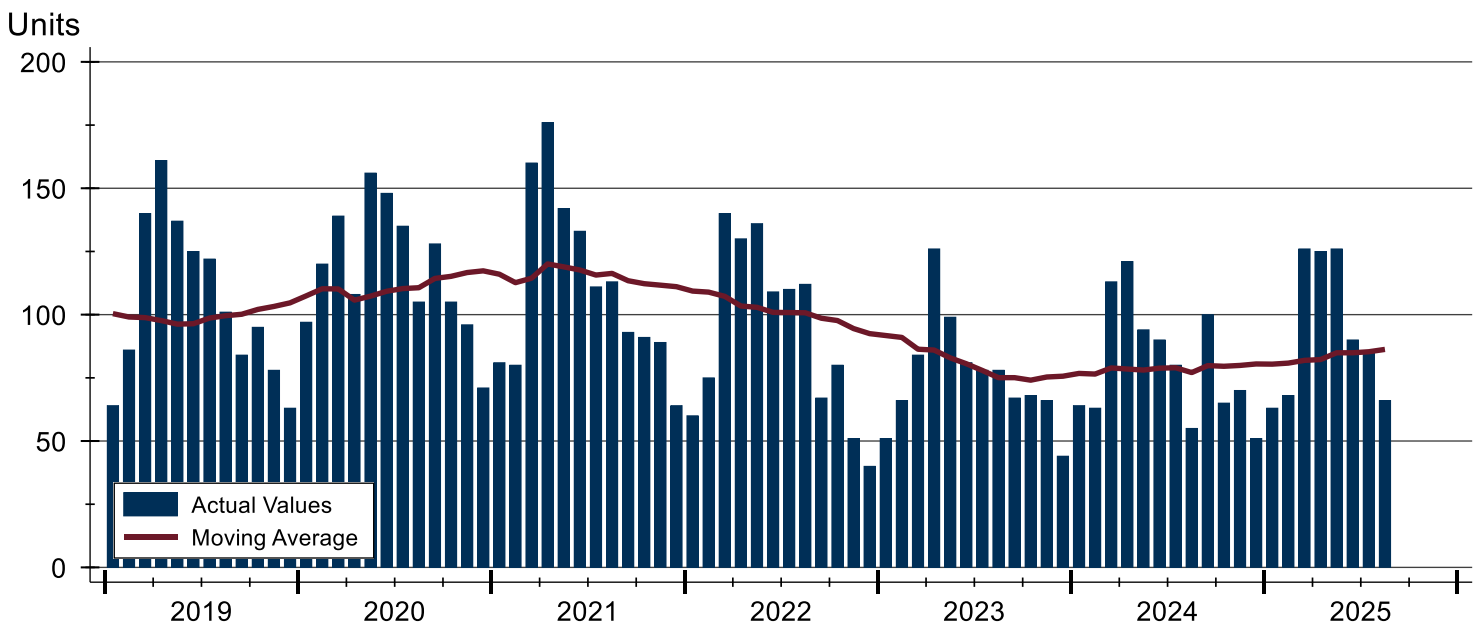
City of Lawrence Contracts Written Analysis

Summary Statistics for Contracts Written		2025	August 2024	Change	Year-to-Date		
		2025	2024		2025	2024	Change
Contracts Written		66	55	20.0%	749	680	10.1%
Volume (1,000s)		25,088	19,962	25.7%	283,672	243,456	16.5%
Average	Sale Price	380,123	362,953	4.7%	378,734	358,023	5.8%
	Days on Market	22	32	-31.3%	23	23	0.0%
	Percent of Original	97.8%	97.5%	0.3%	98.7%	98.8%	-0.1%
Median	Sale Price	319,950	350,000	-8.6%	325,000	319,700	1.7%
	Days on Market	8	17	-52.9%	6	7	-14.3%
	Percent of Original	100.0%	97.7%	2.4%	100.0%	100.0%	0.0%

A total of 66 contracts for sale were written in the City of Lawrence during the month of August, up from 55 in 2024. The median list price of these homes was \$319,950, down from \$350,000 the prior year.

Half of the homes that went under contract in August were on the market less than 8 days, compared to 17 days in August 2024.

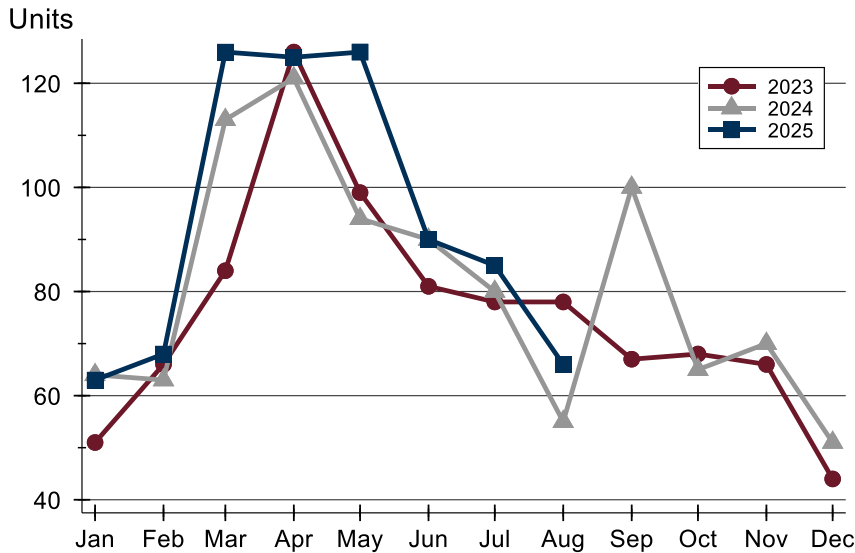
History of Contracts Written





City of Lawrence Contracts Written Analysis

Contracts Written by Month



Month	2023	2024	2025
January	51	64	63
February	66	63	68
March	84	113	126
April	126	121	125
May	99	94	126
June	81	90	90
July	78	80	85
August	78	55	66
September	67	100	
October	68	65	
November	66	70	
December	44	51	

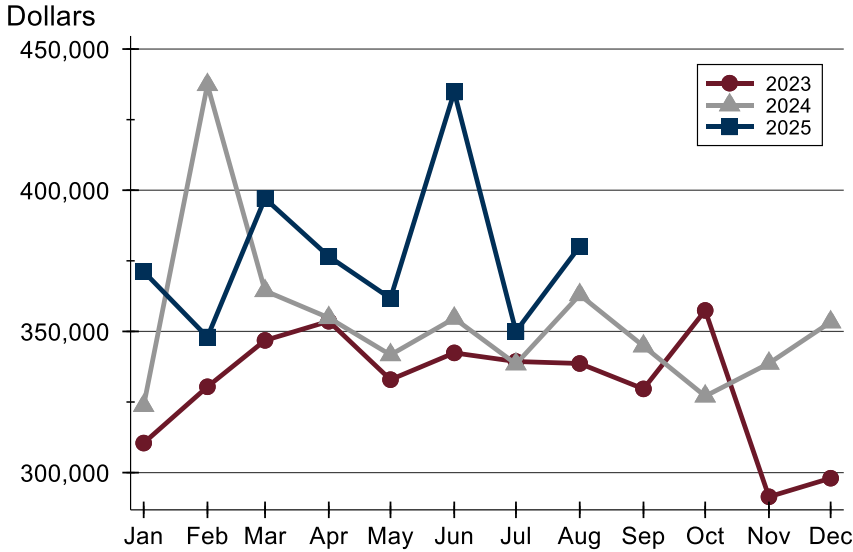
Contracts Written by Price Range

Price Range	Contracts Written		List Price		Days on Market		Price as % of Orig.	
	Number	Percent	Average	Median	Avg.	Med.	Avg.	Med.
Below \$50,000	0	0.0%	N/A	N/A	N/A	N/A	N/A	N/A
\$50,000-\$99,999	0	0.0%	N/A	N/A	N/A	N/A	N/A	N/A
\$100,000-\$149,999	2	3.0%	124,950	124,950	3	3	100.0%	100.0%
\$150,000-\$199,999	5	7.6%	185,360	187,000	35	8	94.2%	97.7%
\$200,000-\$249,999	7	10.6%	234,114	234,900	12	7	100.6%	100.0%
\$250,000-\$299,999	13	19.7%	268,419	265,000	10	5	98.1%	100.0%
\$300,000-\$349,999	14	21.2%	326,882	324,500	21	9	97.1%	100.0%
\$350,000-\$399,999	7	10.6%	381,971	385,000	29	13	94.9%	100.0%
\$400,000-\$449,999	4	6.1%	424,950	422,450	37	42	98.6%	97.8%
\$450,000-\$499,999	3	4.5%	469,833	465,000	13	2	99.0%	100.0%
\$500,000-\$599,999	0	0.0%	N/A	N/A	N/A	N/A	N/A	N/A
\$600,000-\$749,999	6	9.1%	684,300	687,400	37	19	98.4%	100.0%
\$750,000-\$999,999	5	7.6%	863,580	849,900	23	10	99.5%	100.0%
\$1,000,000 and up	0	0.0%	N/A	N/A	N/A	N/A	N/A	N/A



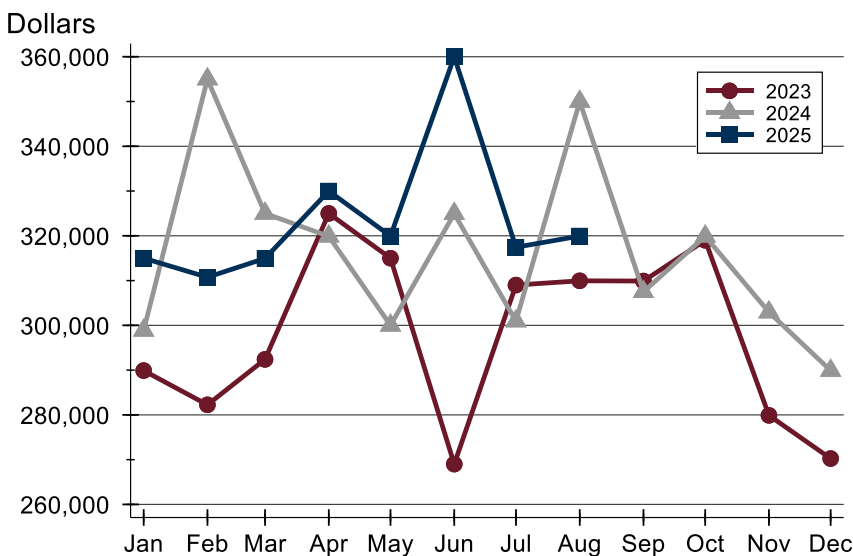
City of Lawrence Contracts Written Analysis

Average Price



Month	2023	2024	2025
January	310,467	323,707	371,215
February	330,402	437,352	348,003
March	346,825	364,385	397,088
April	353,594	354,828	376,561
May	332,913	341,694	361,708
June	342,393	354,642	434,789
July	339,349	338,454	350,006
August	338,645	362,953	380,123
September	329,643	344,812	
October	357,438	327,064	
November	291,443	338,691	
December	298,019	353,308	

Median Price

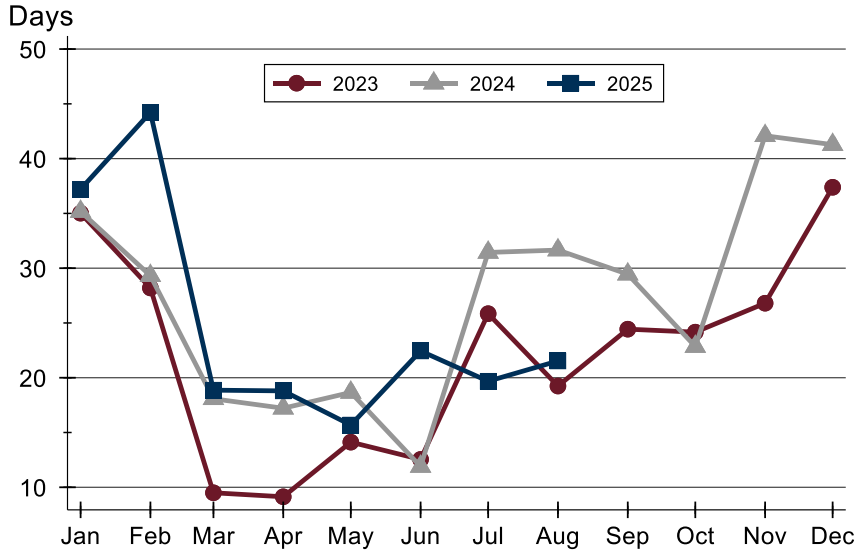


Month	2023	2024	2025
January	289,900	298,880	315,000
February	282,250	355,000	310,750
March	292,400	325,000	314,950
April	325,000	319,900	330,000
May	315,000	300,000	319,950
June	269,000	324,950	360,000
July	309,000	300,950	317,450
August	309,950	350,000	319,950
September	309,900	307,500	
October	319,000	319,900	
November	279,900	302,950	
December	270,250	289,900	



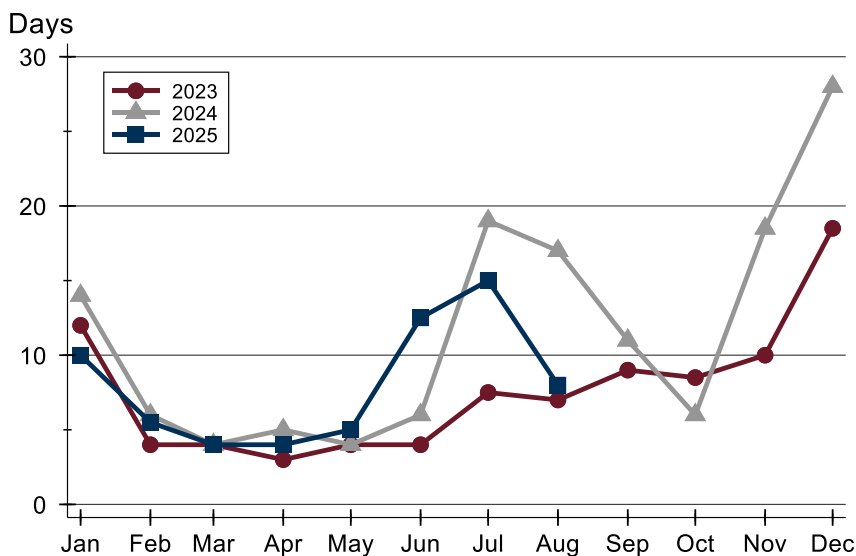
City of Lawrence Contracts Written Analysis

Average DOM



Month	2023	2024	2025
January	35	35	37
February	28	29	44
March	10	18	19
April	9	17	19
May	14	19	16
June	13	12	22
July	26	31	20
August	19	32	22
September	24	29	
October	24	23	
November	27	42	
December	37	41	

Median DOM



Month	2023	2024	2025
January	12	14	10
February	4	6	6
March	4	4	4
April	3	5	4
May	4	4	5
June	4	6	13
July	8	19	15
August	7	17	8
September	9	11	
October	9	6	
November	10	19	
December	19	28	



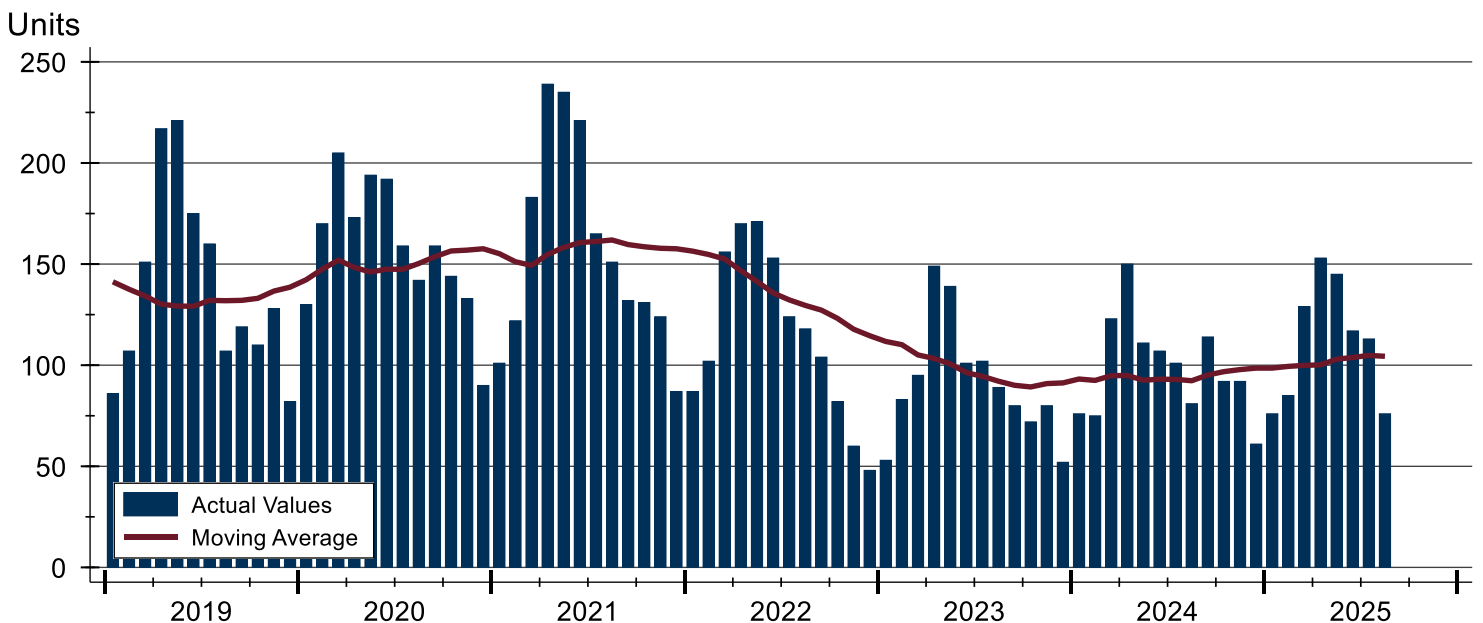
City of Lawrence Pending Contracts Analysis

Summary Statistics for Pending Contracts		2025	End of August 2024	Change
Pending Contracts		76	81	-6.2%
Volume (1,000s)		29,098	26,646	9.2%
Average	List Price	382,863	328,967	16.4%
	Days on Market	19	30	-36.7%
	Percent of Original	98.8%	98.8%	0.0%
Median	List Price	319,950	309,900	3.2%
	Days on Market	8	15	-46.7%
	Percent of Original	100.0%	100.0%	0.0%

A total of 76 listings in the City of Lawrence had contracts pending at the end of August, down from 81 contracts pending at the end of August 2024.

Pending contracts reflect listings with a contract in place at the end of the month. In contrast, contracts written measures the number of listings put under contract during the month.

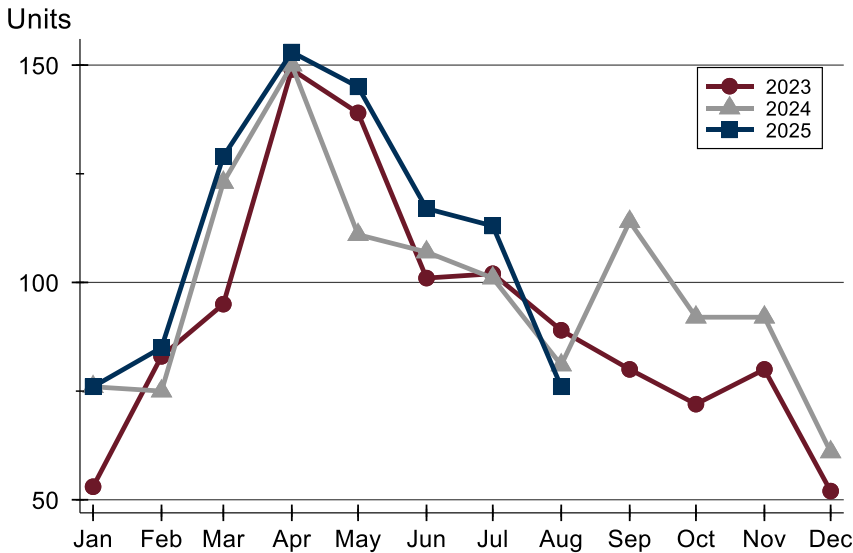
History of Pending Contracts





City of Lawrence Pending Contracts Analysis

Pending Contracts by Month



Month	2023	2024	2025
January	53	76	76
February	83	75	85
March	95	123	129
April	149	150	153
May	139	111	145
June	101	107	117
July	102	101	113
August	89	81	76
September	80	114	
October	72	92	
November	80	92	
December	52	61	

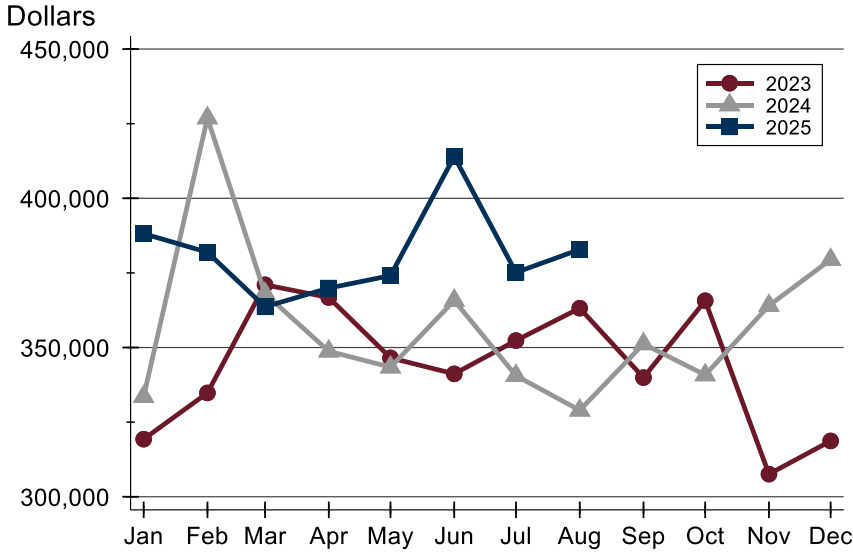
Pending Contracts by Price Range

Price Range	Pending Contracts		List Price		Days on Market		Price as % of Orig.	
	Number	Percent	Average	Median	Avg.	Med.	Avg.	Med.
Below \$50,000	0	0.0%	N/A	N/A	N/A	N/A	N/A	N/A
\$50,000-\$99,999	0	0.0%	N/A	N/A	N/A	N/A	N/A	N/A
\$100,000-\$149,999	4	5.3%	127,213	124,950	29	3	96.8%	100.0%
\$150,000-\$199,999	5	6.6%	181,340	184,900	26	17	99.0%	100.0%
\$200,000-\$249,999	11	14.5%	229,900	234,500	9	7	99.6%	100.0%
\$250,000-\$299,999	15	19.7%	273,623	275,000	7	5	99.8%	100.0%
\$300,000-\$349,999	9	11.8%	329,722	330,000	28	12	97.6%	100.0%
\$350,000-\$399,999	8	10.5%	382,350	382,450	16	11	98.9%	100.0%
\$400,000-\$449,999	5	6.6%	420,960	415,000	30	29	98.2%	100.0%
\$450,000-\$499,999	3	3.9%	458,333	460,000	3	2	100.0%	100.0%
\$500,000-\$599,999	4	5.3%	567,250	572,500	25	23	97.6%	98.7%
\$600,000-\$749,999	6	7.9%	684,300	687,400	37	19	98.4%	100.0%
\$750,000-\$999,999	6	7.9%	861,317	849,950	26	18	99.0%	100.0%
\$1,000,000 and up	0	0.0%	N/A	N/A	N/A	N/A	N/A	N/A



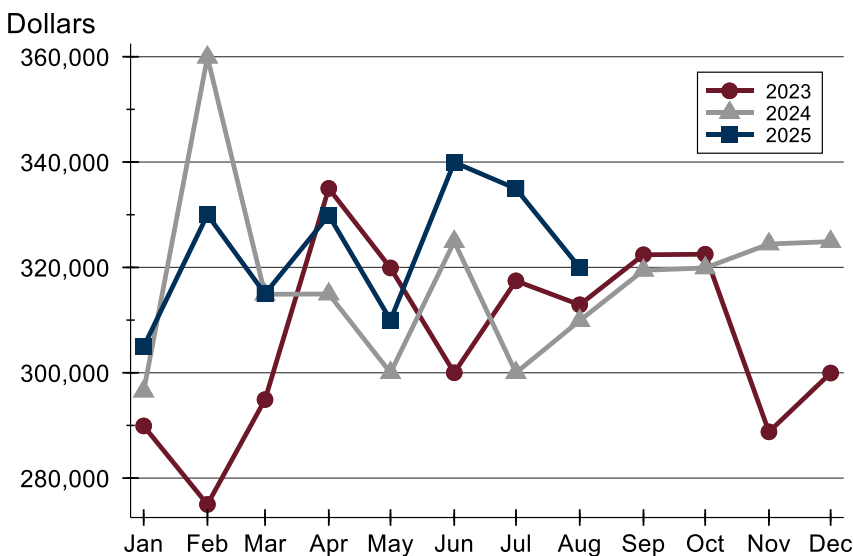
City of Lawrence Pending Contracts Analysis

Average Price



Month	2023	2024	2025
January	319,303	333,556	388,137
February	334,790	426,894	381,923
March	371,024	368,083	363,646
April	366,757	348,759	369,918
May	346,540	343,428	374,093
June	341,180	365,760	413,985
July	352,339	340,577	375,138
August	363,178	328,967	382,863
September	339,931	351,206	
October	365,678	340,800	
November	307,588	364,048	
December	318,710	379,455	

Median Price

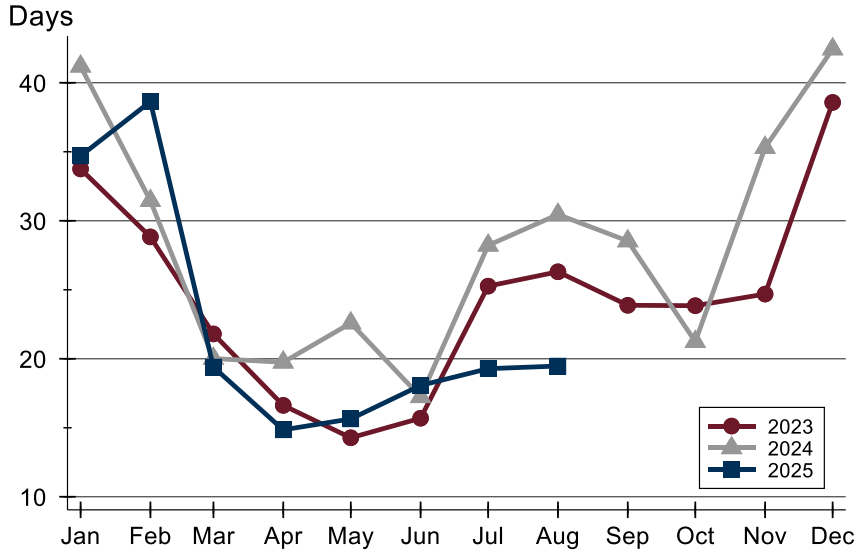


Month	2023	2024	2025
January	289,900	296,500	304,950
February	275,000	359,900	330,000
March	294,900	314,900	315,000
April	335,000	314,950	329,900
May	319,900	300,000	310,000
June	300,000	324,900	339,950
July	317,450	300,000	334,950
August	312,900	309,900	319,950
September	322,400	319,450	
October	322,500	319,900	
November	288,775	324,450	
December	299,950	324,900	



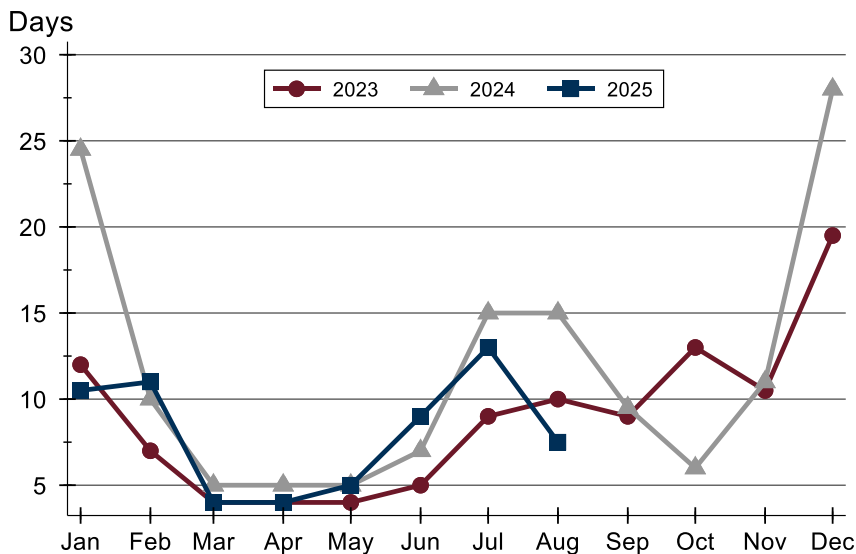
City of Lawrence Pending Contracts Analysis

Average DOM



Month	2023	2024	2025
January	34	41	35
February	29	31	39
March	22	20	19
April	17	20	15
May	14	23	16
June	16	17	18
July	25	28	19
August	26	30	19
September	24	29	
October	24	21	
November	25	35	
December	39	42	

Median DOM



Month	2023	2024	2025
January	12	25	11
February	7	10	11
March	4	5	4
April	4	5	4
May	4	5	5
June	5	7	9
July	9	15	13
August	10	15	8
September	9	10	
October	13	6	
November	11	11	
December	20	28	