



**June  
2024**

# Lawrence MLS Statistics



LAWRENCE  
Board of REALTORS®

## City of Lawrence Housing Report



### Market Overview

#### City of Lawrence Home Sales Fell in June

Total home sales in the City of Lawrence fell last month to 85 units, compared to 118 units in June 2023. Total sales volume was \$28.6 million, down from a year earlier.

The median sale price in June was \$301,000, up from \$300,415 a year earlier. Homes that sold in June were typically on the market for 4 days and sold for 100.0% of their list prices.

#### City of Lawrence Active Listings Up at End of June

The total number of active listings in the City of Lawrence at the end of June was 183 units, up from 127 at the same point in 2023. This represents a 2.5 months' supply of homes available for sale. The median list price of homes on the market at the end of June was \$315,000.

During June, a total of 81 contracts were written up from 80 in June 2023. At the end of the month, there were 107 contracts still pending.

### Report Contents

- Summary Statistics – Page 2
- Closed Listing Analysis – Page 3
- Active Listings Analysis – Page 7
- Months' Supply Analysis – Page 11
- New Listings Analysis – Page 12
- Contracts Written Analysis – Page 15
- Pending Contracts Analysis – Page 19

### Contact Information

Rob Hulse, Executive Vice-President  
 Lawrence Board of REALTORS®  
 3838 W. 6th Street (at Monterey)  
 Lawrence, KS 66049  
 785-842-1843  
[Rob@LawrenceRealtor.com](mailto:Rob@LawrenceRealtor.com)  
[www.LawrenceRealtor.com](http://www.LawrenceRealtor.com)



**June  
2024**

# Lawrence MLS Statistics



LAWRENCE  
Board of REALTORS®

## City of Lawrence Summary Statistics

June MLS Statistics Three-year History		Current Month			Year-to-Date		
		2024	2023	2022	2024	2023	2022
<b>Home Sales</b>		<b>85</b>	<b>118</b>	<b>129</b>	<b>455</b>	<b>448</b>	<b>572</b>
Change from prior year		-28.0%	-8.5%	-12.8%	1.6%	-21.7%	-7.1%
<b>Active Listings</b>		<b>183</b>	<b>127</b>	<b>127</b>	<b>N/A</b>	<b>N/A</b>	<b>N/A</b>
Change from prior year		44.1%	0.0%	29.6%			
<b>Months' Supply</b>		<b>2.5</b>	<b>1.5</b>	<b>1.2</b>	<b>N/A</b>	<b>N/A</b>	<b>N/A</b>
Change from prior year		66.7%	25.0%	33.3%			
<b>New Listings</b>		<b>153</b>	<b>126</b>	<b>166</b>	<b>673</b>	<b>607</b>	<b>763</b>
Change from prior year		21.4%	-24.1%	1.2%	10.9%	-20.4%	-8.2%
<b>Contracts Written</b>		<b>81</b>	<b>80</b>	<b>109</b>	<b>509</b>	<b>490</b>	<b>638</b>
Change from prior year		1.3%	-26.6%	-12.1%	3.9%	-23.2%	-14.0%
<b>Pending Contracts</b>		<b>107</b>	<b>101</b>	<b>153</b>	<b>N/A</b>	<b>N/A</b>	<b>N/A</b>
Change from prior year		5.9%	-34.0%	-30.8%			
<b>Sales Volume (1,000s)</b>		<b>28,580</b>	<b>39,227</b>	<b>45,702</b>	<b>159,042</b>	<b>150,775</b>	<b>190,842</b>
Change from prior year		-27.1%	-14.2%	0.8%	5.5%	-21.0%	4.0%
Average	<b>Sale Price</b>	<b>336,234</b>	<b>332,429</b>	<b>354,276</b>	<b>349,543</b>	<b>336,552</b>	<b>333,640</b>
	Change from prior year	1.1%	-6.2%	15.7%	3.9%	0.9%	12.0%
	<b>List Price of Actives</b>	<b>353,875</b>	<b>401,362</b>	<b>331,603</b>	<b>N/A</b>	<b>N/A</b>	<b>N/A</b>
	Change from prior year	-11.8%	21.0%	-5.8%			
	<b>Days on Market</b>	<b>19</b>	<b>11</b>	<b>10</b>	<b>22</b>	<b>17</b>	<b>14</b>
Change from prior year	72.7%	10.0%	25.0%	29.4%	21.4%	-22.2%	
	<b>Percent of List</b>	<b>100.8%</b>	<b>102.5%</b>	<b>104.0%</b>	<b>99.9%</b>	<b>101.2%</b>	<b>102.9%</b>
Change from prior year	-1.7%	-1.4%	1.0%	-1.3%	-1.7%	0.9%	
	<b>Percent of Original</b>	<b>100.7%</b>	<b>101.9%</b>	<b>103.6%</b>	<b>99.3%</b>	<b>100.8%</b>	<b>102.6%</b>
Change from prior year	-1.2%	-1.6%	1.1%	-1.5%	-1.8%	1.0%	
Median	<b>Sale Price</b>	<b>301,000</b>	<b>300,415</b>	<b>302,500</b>	<b>315,000</b>	<b>300,000</b>	<b>300,000</b>
	Change from prior year	0.2%	-0.7%	12.0%	5.0%	0.0%	13.3%
	<b>List Price of Actives</b>	<b>315,000</b>	<b>389,900</b>	<b>329,900</b>	<b>N/A</b>	<b>N/A</b>	<b>N/A</b>
	Change from prior year	-19.2%	18.2%	5.2%			
	<b>Days on Market</b>	<b>4</b>	<b>3</b>	<b>3</b>	<b>5</b>	<b>4</b>	<b>3</b>
Change from prior year	33.3%	0.0%	0.0%	25.0%	33.3%	0.0%	
	<b>Percent of List</b>	<b>100.0%</b>	<b>101.0%</b>	<b>102.9%</b>	<b>100.0%</b>	<b>100.0%</b>	<b>100.1%</b>
Change from prior year	-1.0%	-1.8%	1.3%	0.0%	-0.1%	0.1%	
	<b>Percent of Original</b>	<b>100.0%</b>	<b>100.4%</b>	<b>102.6%</b>	<b>100.0%</b>	<b>100.0%</b>	<b>100.0%</b>
Change from prior year	-0.4%	-2.1%	1.3%	0.0%	0.0%	0.0%	

Note: Year-to-date statistics cannot be calculated for Active Listings, Months' Supply and Pending Contracts.



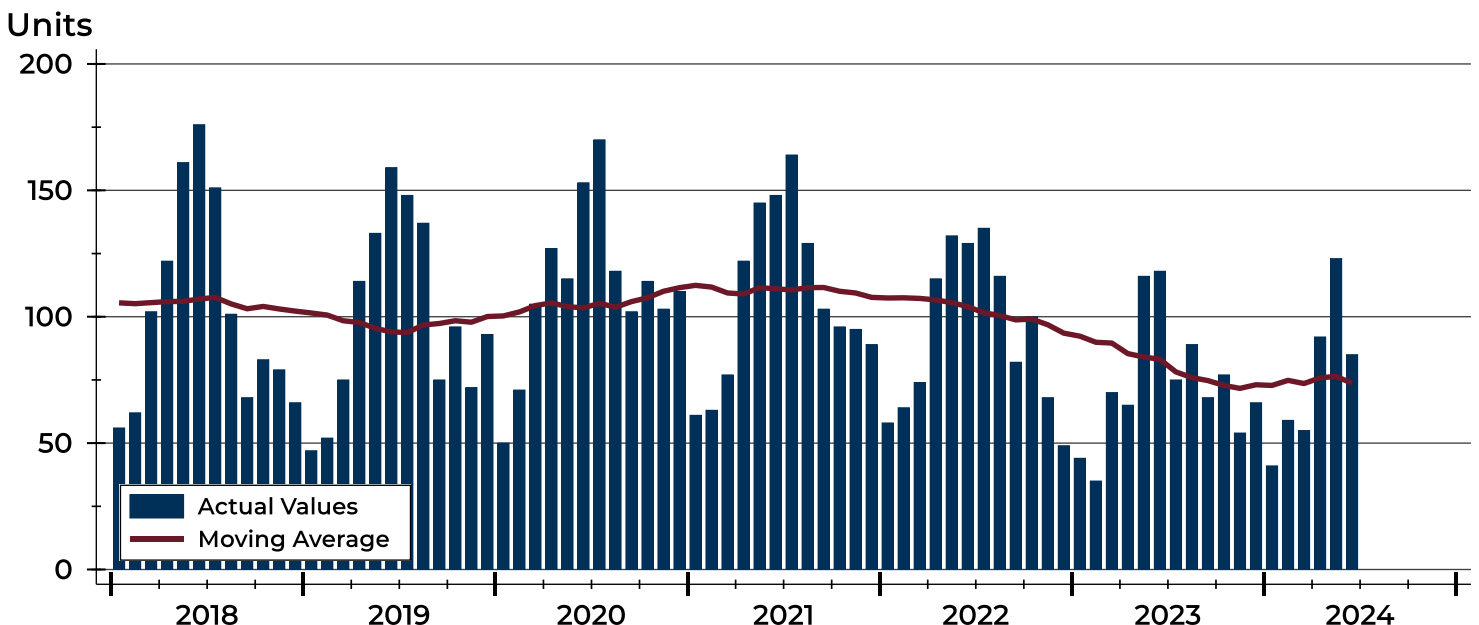
# City of Lawrence Closed Listings Analysis

Summary Statistics for Closed Listings		2024	June 2023	Change	2024	Year-to-Date 2023	Change
Closed Listings		85	118	-28.0%	455	448	1.6%
Volume (1,000s)		28,580	39,227	-27.1%	159,042	150,775	5.5%
Months' Supply		2.5	1.5	66.7%	N/A	N/A	N/A
Average	Sale Price	336,234	332,429	1.1%	349,543	336,552	3.9%
	Days on Market	19	11	72.7%	22	17	29.4%
	Percent of List	100.8%	102.5%	-1.7%	99.9%	101.2%	-1.3%
	Percent of Original	100.7%	101.9%	-1.2%	99.3%	100.8%	-1.5%
Median	Sale Price	301,000	300,415	0.2%	315,000	300,000	5.0%
	Days on Market	4	3	33.3%	5	4	25.0%
	Percent of List	100.0%	101.0%	-1.0%	100.0%	100.0%	0.0%
	Percent of Original	100.0%	100.4%	-0.4%	100.0%	100.0%	0.0%

A total of 85 homes sold in the City of Lawrence in June, down from 118 units in June 2023. Total sales volume fell to \$28.6 million compared to \$39.2 million in the previous year.

The median sales price in June was \$301,000, up 0.2% compared to the prior year. Median days on market was 4 days, the same as May, and up from 3 in June 2023.

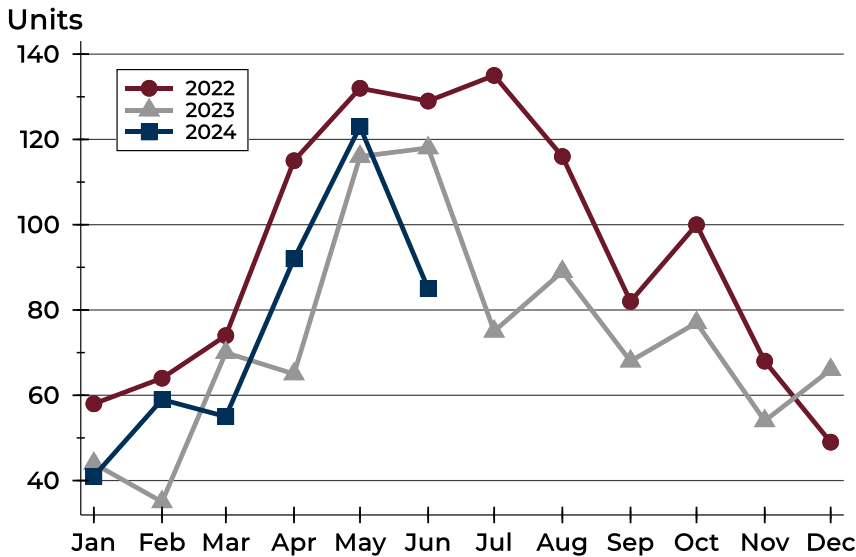
## History of Closed Listings





## City of Lawrence Closed Listings Analysis

### Closed Listings by Month



Month	2022	2023	2024
January	58	44	41
February	64	35	59
March	74	70	55
April	115	65	92
May	132	116	123
June	129	118	85
July	135	75	
August	116	89	
September	82	68	
October	100	77	
November	68	54	
December	49	66	

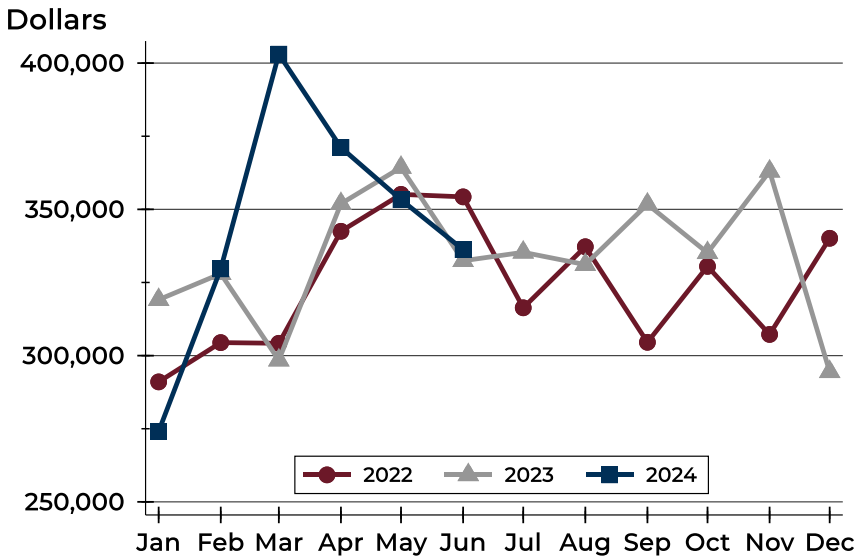
### Closed Listings by Price Range

Price Range	Sales		Months' Supply	Sale Price		Days on Market		Price as % of List		Price as % of Orig.	
	Number	Percent		Average	Median	Avg.	Med.	Avg.	Med.	Avg.	Med.
Below \$50,000	0	0.0%	N/A	N/A	N/A	N/A	N/A	N/A	N/A	N/A	N/A
\$50,000-\$99,999	3	3.5%	5.5	87,133	81,900	7	4	100.0%	100.0%	100.0%	100.0%
\$100,000-\$149,999	3	3.5%	3.3	128,333	135,000	3	3	102.7%	100.1%	102.7%	100.1%
\$150,000-\$199,999	7	8.2%	2.2	177,214	175,000	31	5	99.1%	100.0%	99.1%	100.0%
\$200,000-\$249,999	12	14.1%	1.7	223,640	225,691	15	2	101.0%	100.0%	101.3%	100.0%
\$250,000-\$299,999	17	20.0%	2.3	276,059	274,000	5	5	101.9%	100.7%	102.1%	100.8%
\$300,000-\$349,999	13	15.3%	2.5	325,423	325,000	14	7	100.1%	100.0%	99.8%	100.0%
\$350,000-\$399,999	8	9.4%	1.6	370,688	370,750	24	11	101.5%	100.0%	100.6%	100.0%
\$400,000-\$449,999	5	5.9%	3.4	433,100	445,000	8	6	100.6%	101.1%	100.5%	101.1%
\$450,000-\$499,999	4	4.7%	3.8	465,000	457,500	102	4	104.0%	100.9%	103.3%	100.7%
\$500,000-\$599,999	7	8.2%	2.5	554,986	559,900	23	24	98.3%	100.0%	97.6%	100.0%
\$600,000-\$749,999	5	5.9%	2.1	674,000	670,000	26	3	100.5%	101.1%	100.2%	101.1%
\$750,000-\$999,999	1	1.2%	4.6	839,900	839,900	2	2	100.0%	100.0%	100.0%	100.0%
\$1,000,000 and up	0	0.0%	N/A	N/A	N/A	N/A	N/A	N/A	N/A	N/A	N/A



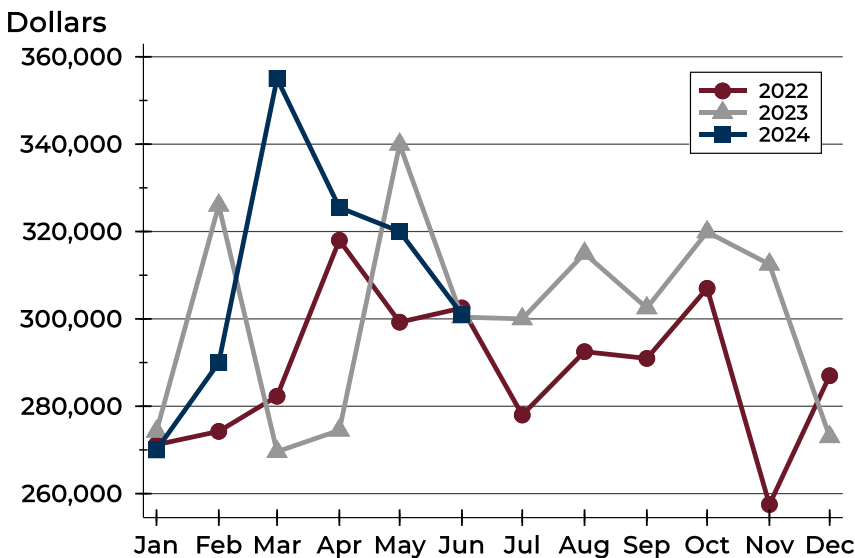
# City of Lawrence Closed Listings Analysis

## Average Price



Month	2022	2023	2024
January	291,023	319,116	<b>274,119</b>
February	304,454	327,994	<b>329,665</b>
March	304,215	298,441	<b>403,061</b>
April	342,504	351,932	<b>371,161</b>
May	355,125	364,323	<b>353,316</b>
June	354,276	332,429	<b>336,234</b>
July	316,345	335,322	
August	337,220	331,109	
September	304,560	351,738	
October	330,510	335,150	
November	307,240	363,014	
December	340,120	294,469	

## Median Price

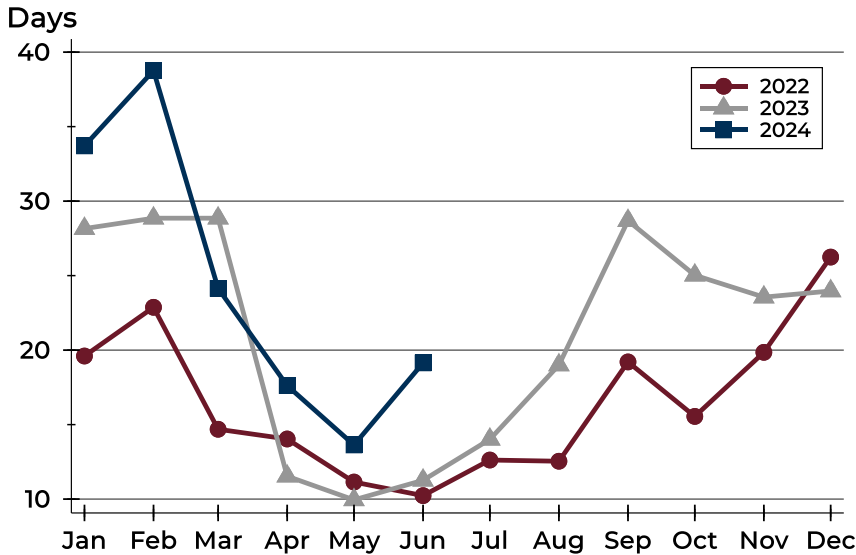


Month	2022	2023	2024
January	271,200	274,250	<b>270,000</b>
February	274,250	326,000	<b>290,000</b>
March	282,300	269,600	<b>355,000</b>
April	318,000	274,500	<b>325,500</b>
May	299,243	339,950	<b>320,000</b>
June	302,500	300,415	<b>301,000</b>
July	278,000	300,000	
August	292,500	315,000	
September	290,950	302,500	
October	307,000	319,900	
November	257,500	312,500	
December	287,000	273,000	



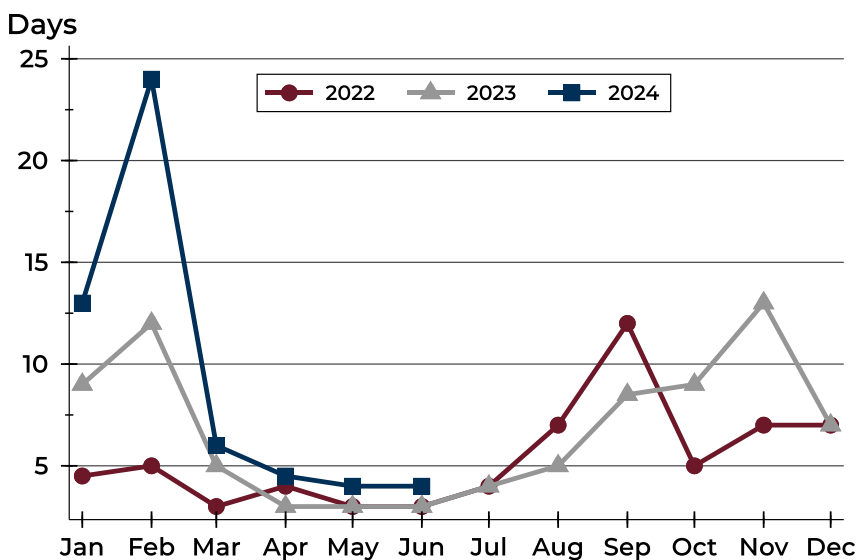
# City of Lawrence Closed Listings Analysis

## Average DOM



Month	2022	2023	2024
January	20	28	<b>34</b>
February	23	29	<b>39</b>
March	15	29	<b>24</b>
April	14	12	<b>18</b>
May	11	10	<b>14</b>
June	10	11	<b>19</b>
July	13	14	
August	13	19	
September	19	29	
October	16	25	
November	20	24	
December	26	24	

## Median DOM



Month	2022	2023	2024
January	5	9	<b>13</b>
February	5	12	<b>24</b>
March	3	5	<b>6</b>
April	4	3	<b>5</b>
May	3	3	<b>4</b>
June	3	3	<b>4</b>
July	4	4	
August	7	5	
September	12	9	
October	5	9	
November	7	13	
December	7	7	



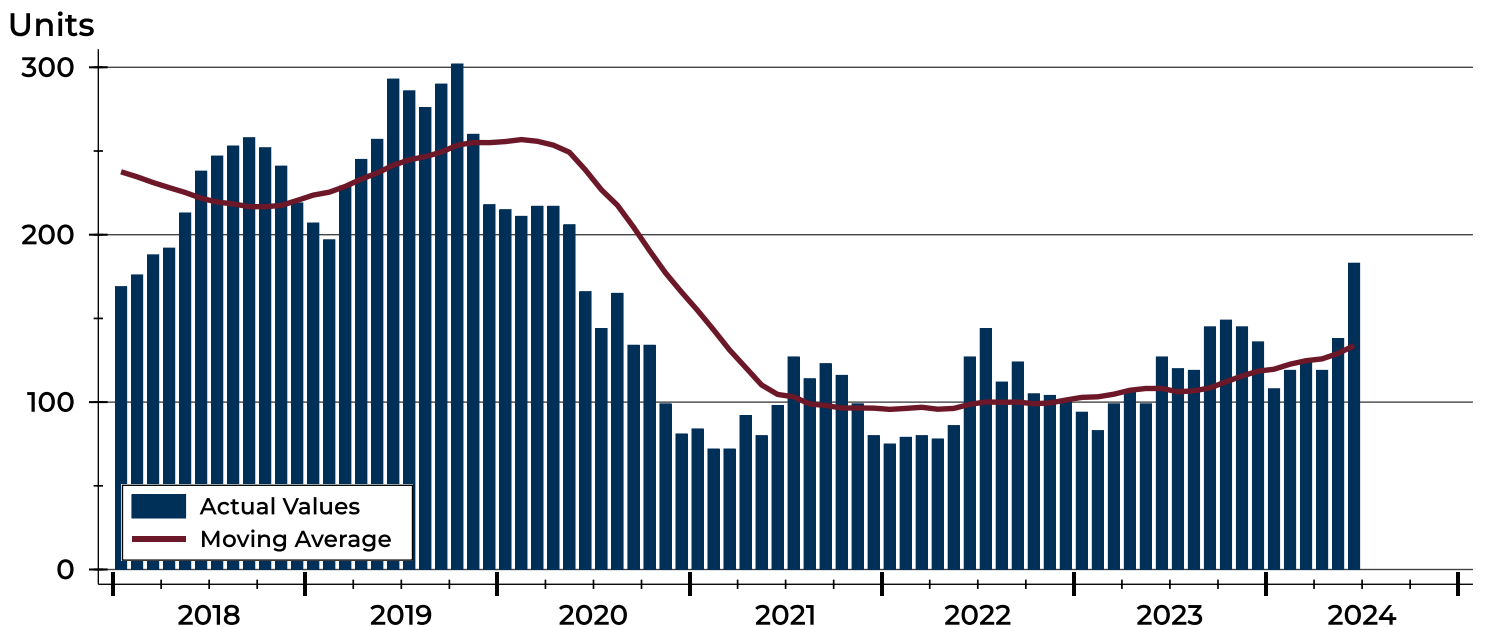
# City of Lawrence Active Listings Analysis

Summary Statistics for Active Listings		2024	End of June 2023	Change
Active Listings		183	127	44.1%
Volume (1,000s)		64,759	50,973	27.0%
Months' Supply		2.5	1.5	66.7%
Average	List Price	353,875	401,362	-11.8%
	Days on Market	52	55	-5.5%
	Percent of Original	99.2%	98.2%	1.0%
Median	List Price	315,000	389,900	-19.2%
	Days on Market	25	30	-16.7%
	Percent of Original	100.0%	100.0%	0.0%

A total of 183 homes were available for sale in the City of Lawrence at the end of June. This represents a 2.5 months' supply of active listings.

The median list price of homes on the market at the end of June was \$315,000, down 19.2% from 2023. The typical time on market for active listings was 25 days, down from 30 days a year earlier.

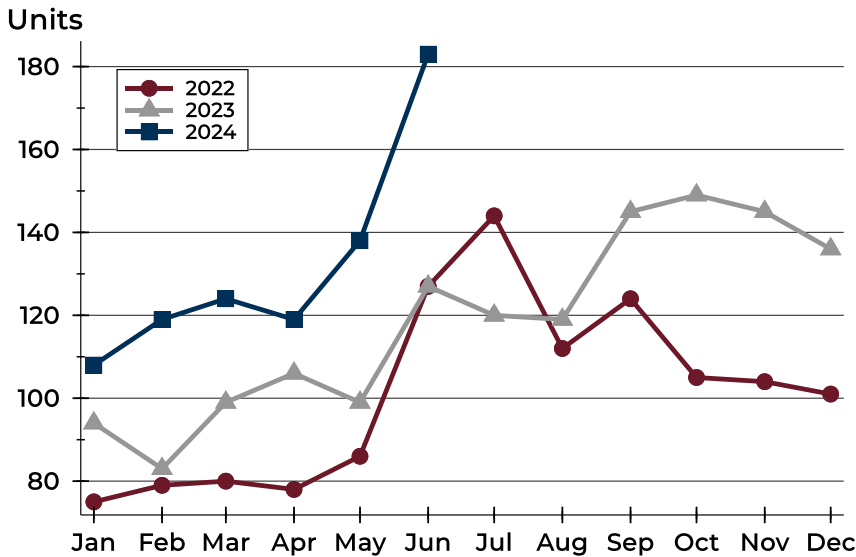
## History of Active Listings





## City of Lawrence Active Listings Analysis

### Active Listings by Month



Month	2022	2023	2024
January	75	94	<b>108</b>
February	79	83	<b>119</b>
March	80	99	<b>124</b>
April	78	106	<b>119</b>
May	86	99	<b>138</b>
June	127	127	<b>183</b>
July	144	120	
August	112	119	
September	124	145	
October	105	149	
November	104	145	
December	101	136	

### Active Listings by Price Range

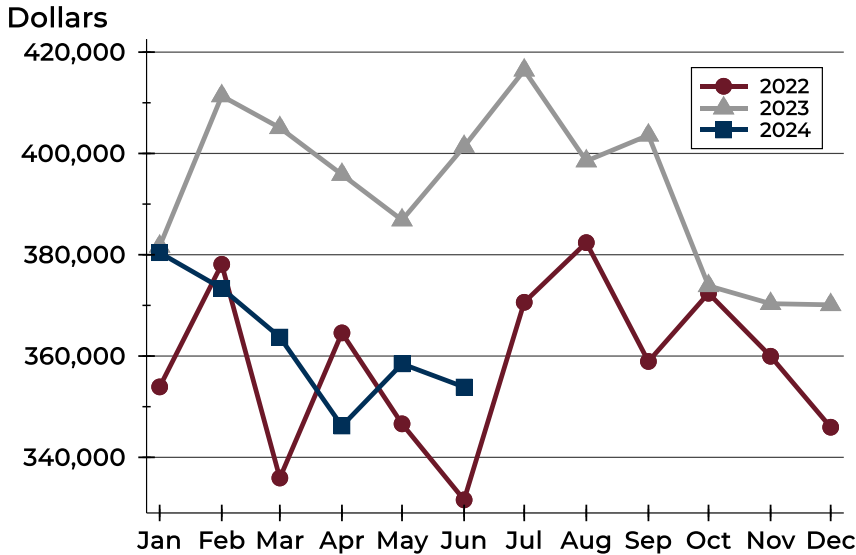
Price Range	Active Listings Number	Active Listings Percent	Months' Supply	List Price Average	List Price Median	Days on Market Avg.	Days on Market Med.	Price as % of Orig. Avg.	Price as % of Orig. Med.
Below \$50,000	5	2.7%	N/A	1,869	1,500	35	27	100.0%	100.0%
\$50,000-\$99,999	5	2.7%	5.5	84,904	84,900	49	13	94.2%	100.0%
\$100,000-\$149,999	9	4.9%	3.3	132,122	134,000	42	25	96.5%	100.0%
\$150,000-\$199,999	14	7.7%	2.2	166,079	160,000	77	34	100.2%	100.0%
\$200,000-\$249,999	18	9.8%	1.7	230,469	232,450	59	22	100.0%	100.0%
\$250,000-\$299,999	30	16.4%	2.3	277,597	275,000	36	18	101.2%	100.0%
\$300,000-\$349,999	29	15.8%	2.5	322,193	319,900	52	25	98.9%	100.0%
\$350,000-\$399,999	15	8.2%	1.6	379,213	385,000	36	29	99.0%	100.0%
\$400,000-\$449,999	15	8.2%	3.4	426,573	425,000	44	18	99.0%	100.0%
\$450,000-\$499,999	16	8.7%	3.8	478,670	477,863	76	37	99.2%	100.0%
\$500,000-\$599,999	14	7.7%	2.5	559,929	557,450	48	24	99.3%	100.0%
\$600,000-\$749,999	6	3.3%	2.1	674,867	667,450	74	15	97.1%	99.2%
\$750,000-\$999,999	5	2.7%	4.6	906,680	919,500	24	17	100.0%	100.0%
\$1,000,000 and up	2	1.1%	N/A	1,412,000	1,412,000	169	169	93.7%	93.7%





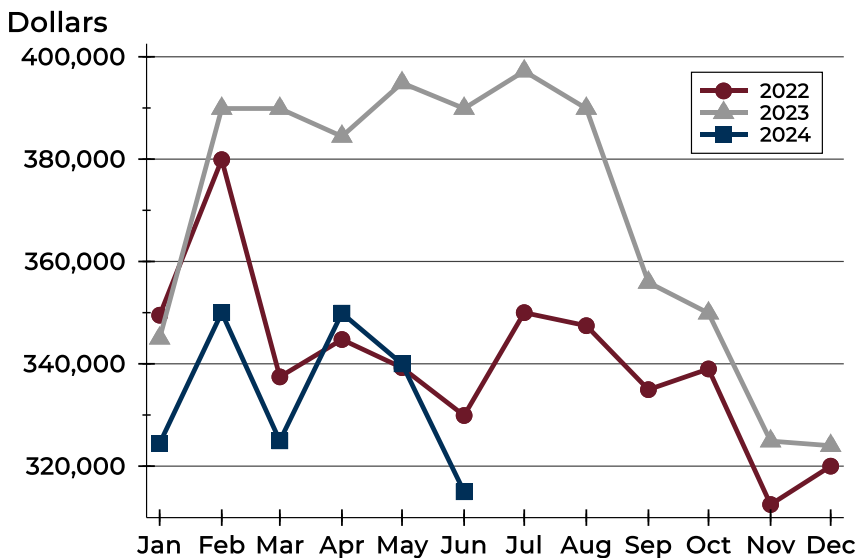
# City of Lawrence Active Listings Analysis

## Average Price



Month	2022	2023	2024
January	353,910	381,662	<b>380,405</b>
February	378,114	411,359	<b>373,361</b>
March	335,920	405,067	<b>363,744</b>
April	364,571	395,842	<b>346,189</b>
May	346,614	386,853	<b>358,466</b>
June	331,603	401,362	<b>353,875</b>
July	370,614	416,435	
August	382,390	398,505	
September	358,932	403,598	
October	372,396	373,865	
November	359,954	370,337	
December	345,946	370,118	

## Median Price

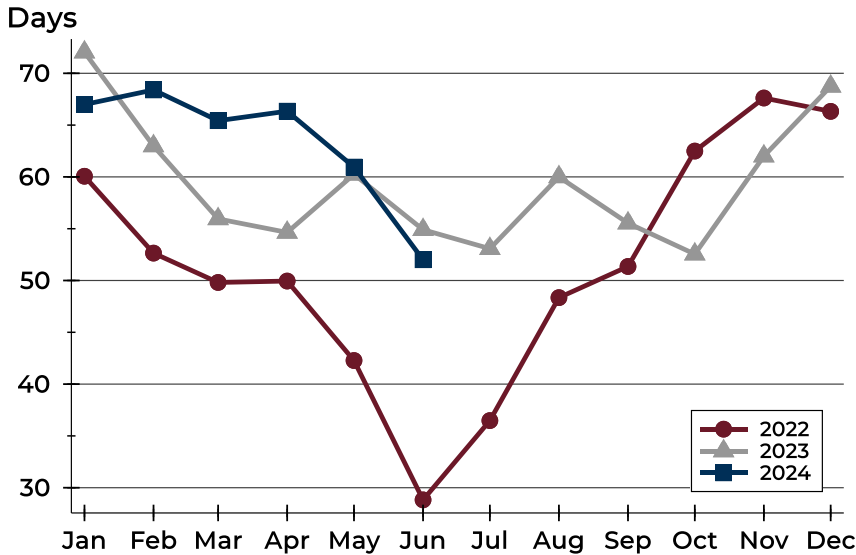


Month	2022	2023	2024
January	349,500	345,000	<b>324,450</b>
February	379,900	389,900	<b>350,000</b>
March	337,450	389,900	<b>324,950</b>
April	344,750	384,450	<b>349,900</b>
May	339,250	394,900	<b>340,000</b>
June	329,900	389,900	<b>315,000</b>
July	350,000	397,200	
August	347,450	389,900	
September	334,950	355,900	
October	339,000	349,900	
November	312,500	324,900	
December	320,000	324,000	



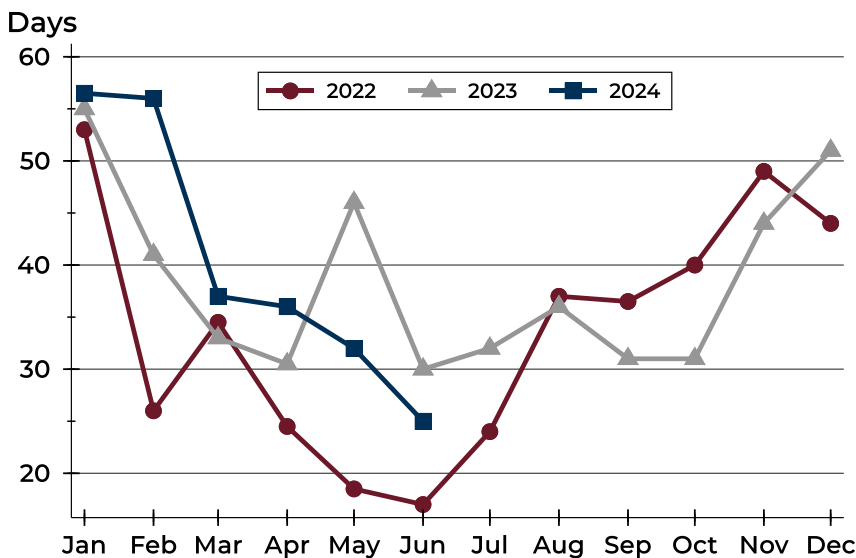
# City of Lawrence Active Listings Analysis

## Average DOM



Month	2022	2023	2024
January	60	72	67
February	53	63	68
March	50	56	65
April	50	55	66
May	42	60	61
June	29	55	52
July	36	53	
August	48	60	
September	51	56	
October	62	53	
November	68	62	
December	66	69	

## Median DOM

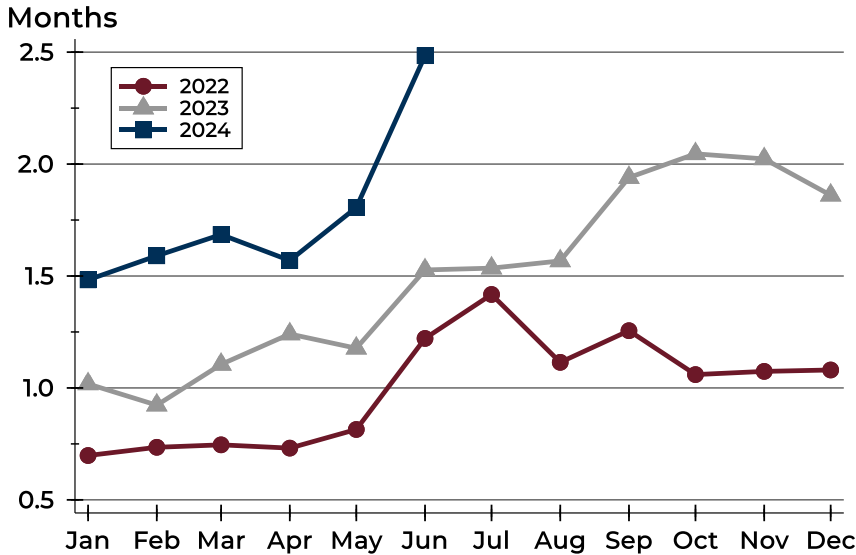


Month	2022	2023	2024
January	53	55	57
February	26	41	56
March	35	33	37
April	25	31	36
May	19	46	32
June	17	30	25
July	24	32	
August	37	36	
September	37	31	
October	40	31	
November	49	44	
December	44	51	



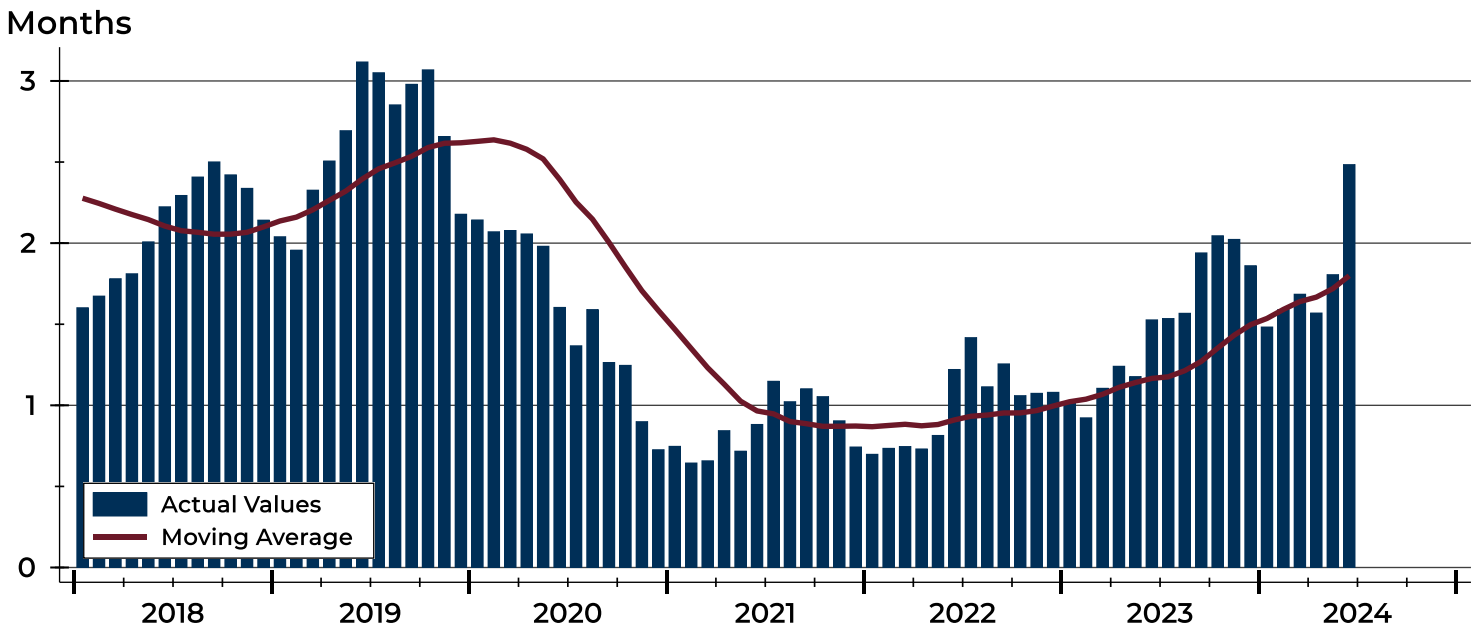
# City of Lawrence Months' Supply Analysis

## Months' Supply by Month



Month	2022	2023	2024
January	0.7	1.0	1.5
February	0.7	0.9	1.6
March	0.7	1.1	1.7
April	0.7	1.2	1.6
May	0.8	1.2	1.8
June	1.2	1.5	2.5
July	1.4	1.5	
August	1.1	1.6	
September	1.3	1.9	
October	1.1	2.0	
November	1.1	2.0	
December	1.1	1.9	

## History of Month's Supply





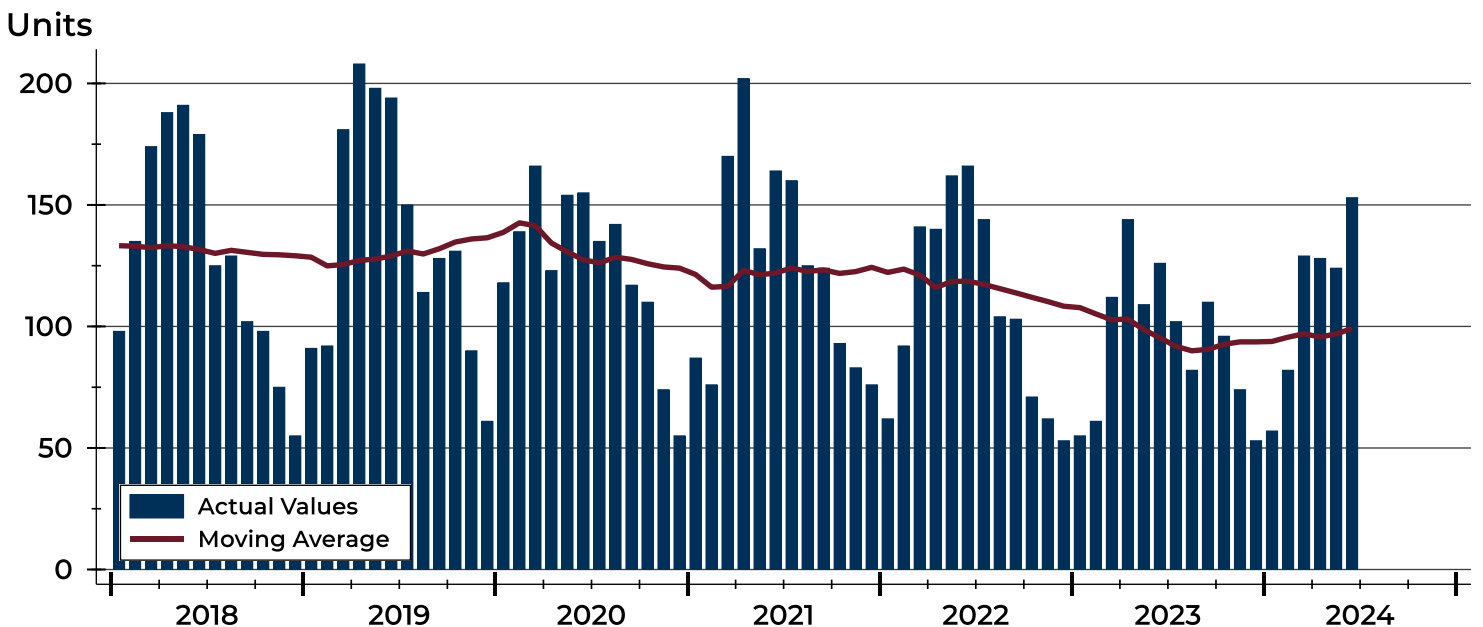
# City of Lawrence New Listings Analysis

Summary Statistics for New Listings		2024	June 2023	Change
Current Month	New Listings	153	126	21.4%
	Volume (1,000s)	55,835	42,740	30.6%
	Average List Price	364,935	339,209	7.6%
	Median List Price	324,900	317,000	2.5%
Year-to-Date	New Listings	673	607	10.9%
	Volume (1,000s)	238,992	203,213	17.6%
	Average List Price	355,115	334,782	6.1%
	Median List Price	319,900	310,000	3.2%

A total of 153 new listings were added in the City of Lawrence during June, up 21.4% from the same month in 2023. Year-to-date the City of Lawrence has seen 673 new listings.

The median list price of these homes was \$324,900 up from \$317,000 in 2023.

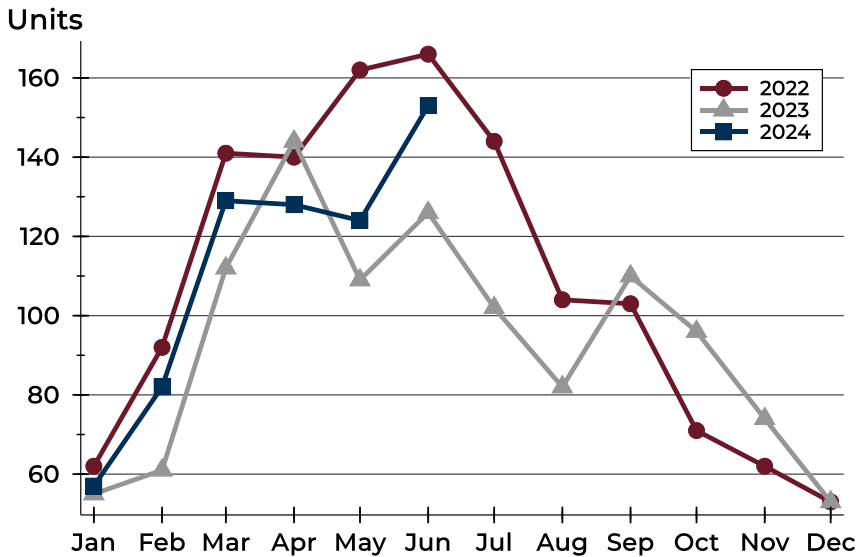
## History of New Listings





## City of Lawrence New Listings Analysis

### New Listings by Month



Month	2022	2023	2024
January	62	55	57
February	92	61	82
March	141	112	129
April	140	144	128
May	162	109	124
June	166	126	153
July	144	102	
August	104	82	
September	103	110	
October	71	96	
November	62	74	
December	53	53	

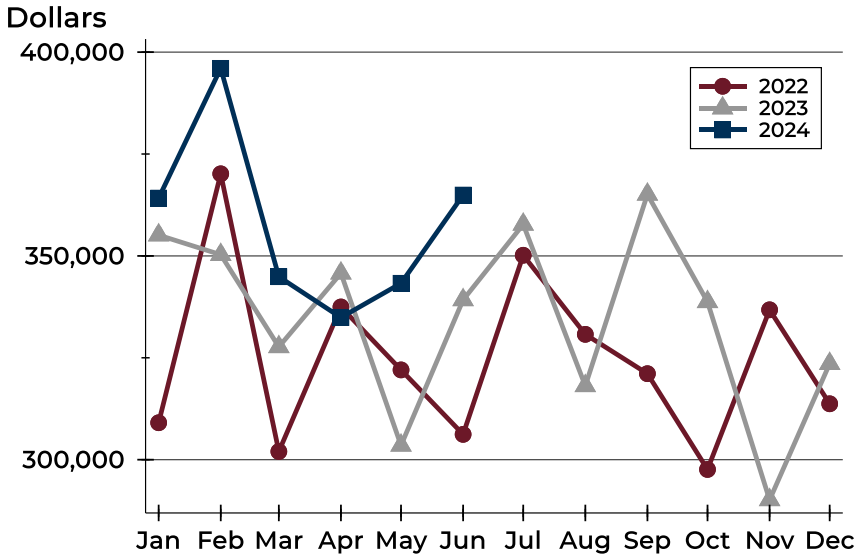
### New Listings by Price Range

Price Range	New Listings		List Price		Days on Market		Price as % of Orig.	
	Number	Percent	Average	Median	Avg.	Med.	Avg.	Med.
Below \$50,000	3	2.0%	2,083	1,500	33	33	100.0%	100.0%
\$50,000-\$99,999	1	0.7%	84,900	84,900	11	11	100.0%	100.0%
\$100,000-\$149,999	1	0.7%	140,000	140,000	30	30	100.0%	100.0%
\$150,000-\$199,999	10	6.5%	170,230	170,000	14	14	100.3%	100.0%
\$200,000-\$249,999	17	11.1%	232,638	234,900	12	9	99.6%	100.0%
\$250,000-\$299,999	35	22.9%	276,826	275,000	13	12	98.8%	100.0%
\$300,000-\$349,999	24	15.7%	327,342	324,950	17	17	99.2%	100.0%
\$350,000-\$399,999	16	10.5%	378,088	379,400	17	19	99.6%	100.0%
\$400,000-\$449,999	14	9.2%	427,421	425,000	18	15	99.6%	100.0%
\$450,000-\$499,999	7	4.6%	480,932	480,000	18	16	100.0%	100.0%
\$500,000-\$599,999	12	7.8%	558,608	554,950	14	14	99.8%	100.0%
\$600,000-\$749,999	8	5.2%	677,375	674,900	11	12	99.6%	100.0%
\$750,000-\$999,999	4	2.6%	894,875	907,250	15	15	100.0%	100.0%
\$1,000,000 and up	1	0.7%	1,300,000	1,300,000	7	7	100.0%	100.0%



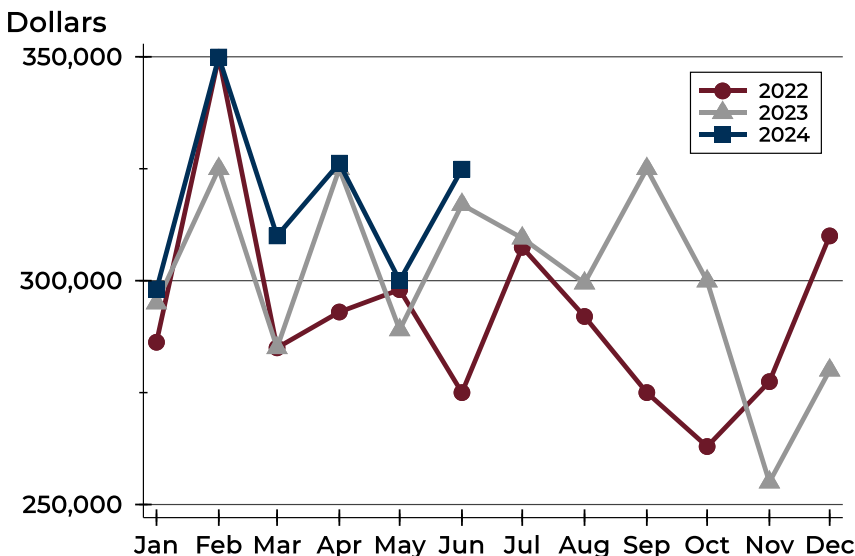
# City of Lawrence New Listings Analysis

## Average Price



Month	2022	2023	2024
January	309,069	355,103	<b>364,190</b>
February	370,146	350,309	<b>396,031</b>
March	302,005	327,690	<b>344,894</b>
April	337,476	345,750	<b>334,886</b>
May	322,036	303,520	<b>343,285</b>
June	306,220	339,209	<b>364,935</b>
July	350,165	357,738	
August	330,760	318,123	
September	321,108	365,103	
October	297,609	338,733	
November	336,777	290,141	
December	313,717	323,562	

## Median Price



Month	2022	2023	2024
January	286,250	295,000	<b>298,000</b>
February	349,900	325,000	<b>349,950</b>
March	285,000	285,000	<b>310,000</b>
April	293,000	325,000	<b>326,250</b>
May	298,000	289,000	<b>300,000</b>
June	275,000	317,000	<b>324,900</b>
July	307,450	309,500	
August	292,000	299,450	
September	275,000	325,000	
October	262,950	299,900	
November	277,450	255,000	
December	310,000	280,000	



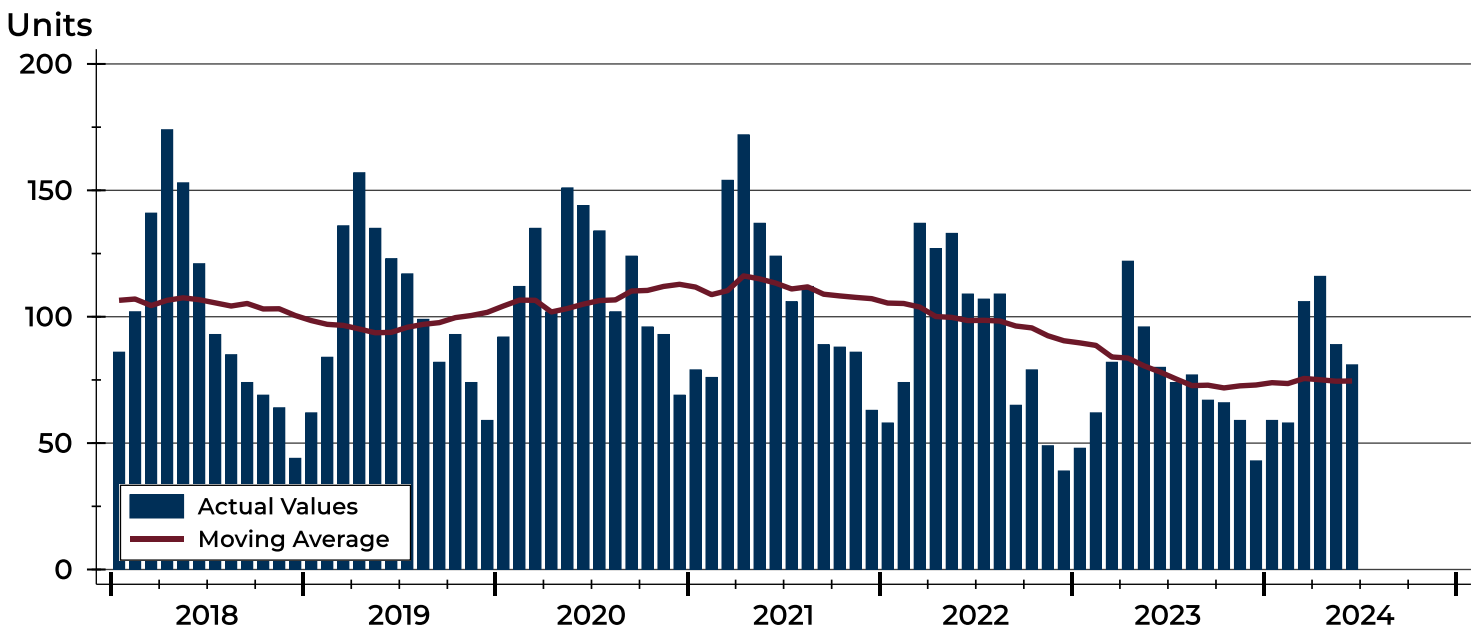
# City of Lawrence Contracts Written Analysis

Summary Statistics for Contracts Written		2024	June 2023	Change	Year-to-Date		
		2024	2023	Change	2024	2023	Change
Contracts Written		81	80	1.3%	509	490	3.9%
Volume (1,000s)		29,113	25,234	15.4%	182,765	163,714	11.6%
Average	Sale Price	359,415	315,423	13.9%	359,066	334,110	7.5%
	Days on Market	12	13	-7.7%	19	16	18.8%
	Percent of Original	99.1%	100.0%	-0.9%	99.5%	100.8%	-1.3%
Median	Sale Price	325,000	267,000	21.7%	319,900	298,500	7.2%
	Days on Market	6	4	50.0%	5	4	25.0%
	Percent of Original	100.0%	100.0%	0.0%	100.0%	100.0%	0.0%

A total of 81 contracts for sale were written in the City of Lawrence during the month of June, up from 80 in 2023. The median list price of these homes was \$325,000, up from \$267,000 the prior year.

Half of the homes that went under contract in June were on the market less than 6 days, compared to 4 days in June 2023.

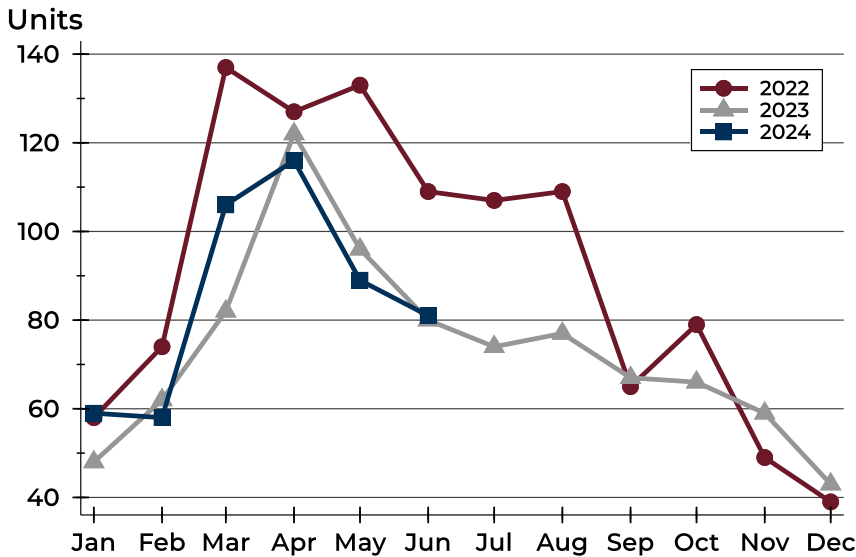
## History of Contracts Written





## City of Lawrence Contracts Written Analysis

### Contracts Written by Month



Month	2022	2023	2024
January	58	48	59
February	74	62	58
March	137	82	106
April	127	122	116
May	133	96	89
June	109	80	81
July	107	74	
August	109	77	
September	65	67	
October	79	66	
November	49	59	
December	39	43	

### Contracts Written by Price Range

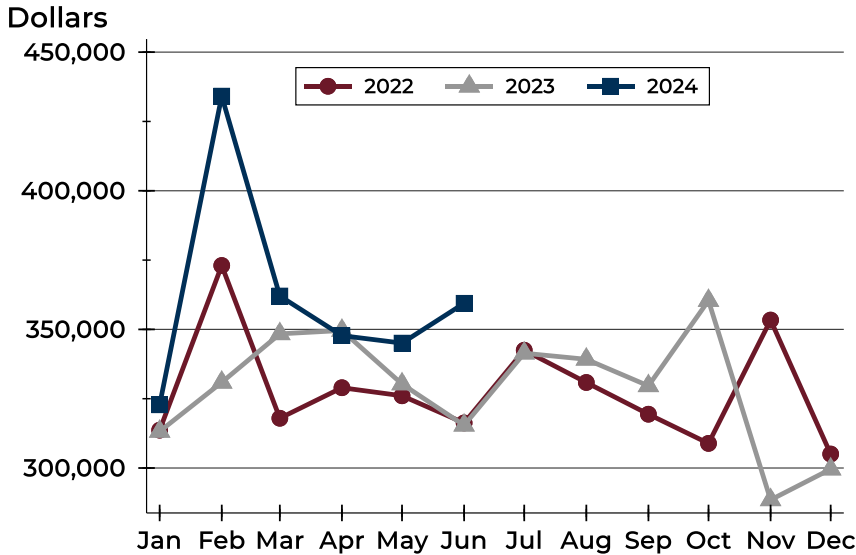
Price Range	Contracts Written		List Price		Days on Market		Price as % of Orig.	
	Number	Percent	Average	Median	Avg.	Med.	Avg.	Med.
Below \$50,000	0	0.0%	N/A	N/A	N/A	N/A	N/A	N/A
\$50,000-\$99,999	0	0.0%	N/A	N/A	N/A	N/A	N/A	N/A
\$100,000-\$149,999	1	1.2%	109,000	109,000	24	24	100.0%	100.0%
\$150,000-\$199,999	5	6.2%	178,600	175,000	6	5	99.8%	100.6%
\$200,000-\$249,999	10	12.3%	225,720	229,900	7	4	99.9%	100.0%
\$250,000-\$299,999	20	24.7%	282,440	279,450	14	11	98.9%	100.0%
\$300,000-\$349,999	13	16.0%	329,438	330,000	18	16	98.5%	100.0%
\$350,000-\$399,999	11	13.6%	371,782	364,900	8	6	99.2%	100.0%
\$400,000-\$449,999	6	7.4%	423,167	417,450	15	7	99.3%	100.0%
\$450,000-\$499,999	4	4.9%	493,450	499,450	21	13	98.4%	100.0%
\$500,000-\$599,999	7	8.6%	549,943	555,000	12	3	99.3%	100.0%
\$600,000-\$749,999	2	2.5%	687,450	687,450	2	2	100.0%	100.0%
\$750,000-\$999,999	1	1.2%	795,000	795,000	7	7	100.0%	100.0%
\$1,000,000 and up	1	1.2%	1,300,000	1,300,000	7	7	100.0%	100.0%





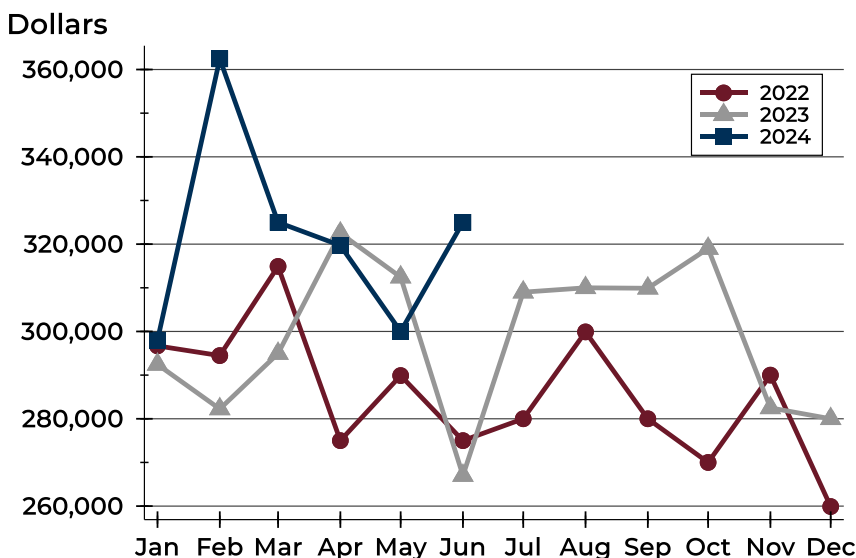
# City of Lawrence Contracts Written Analysis

## Average Price



Month	2022	2023	2024
January	313,674	313,207	<b>322,803</b>
February	373,052	330,911	<b>434,141</b>
March	317,961	348,394	<b>362,046</b>
April	328,966	349,615	<b>347,752</b>
May	326,059	330,296	<b>345,060</b>
June	316,263	315,423	<b>359,415</b>
July	342,488	341,411	
August	330,861	339,212	
September	319,416	329,643	
October	308,888	360,391	
November	353,371	288,514	
December	305,041	299,601	

## Median Price

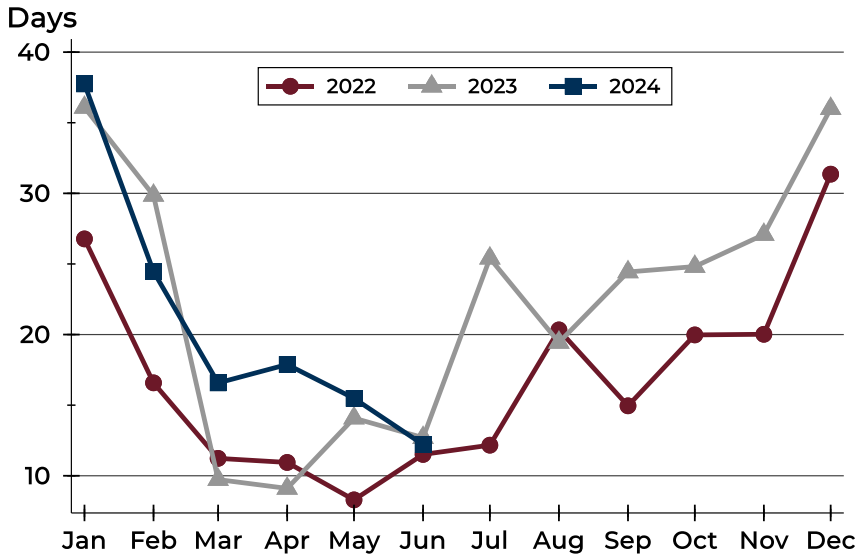


Month	2022	2023	2024
January	296,700	292,450	<b>298,000</b>
February	294,475	282,250	<b>362,450</b>
March	314,900	294,950	<b>325,000</b>
April	275,000	322,500	<b>319,700</b>
May	289,900	312,450	<b>300,000</b>
June	275,000	267,000	<b>325,000</b>
July	280,000	309,000	
August	299,900	310,000	
September	280,000	309,900	
October	270,000	319,000	
November	290,000	282,500	
December	259,900	280,000	



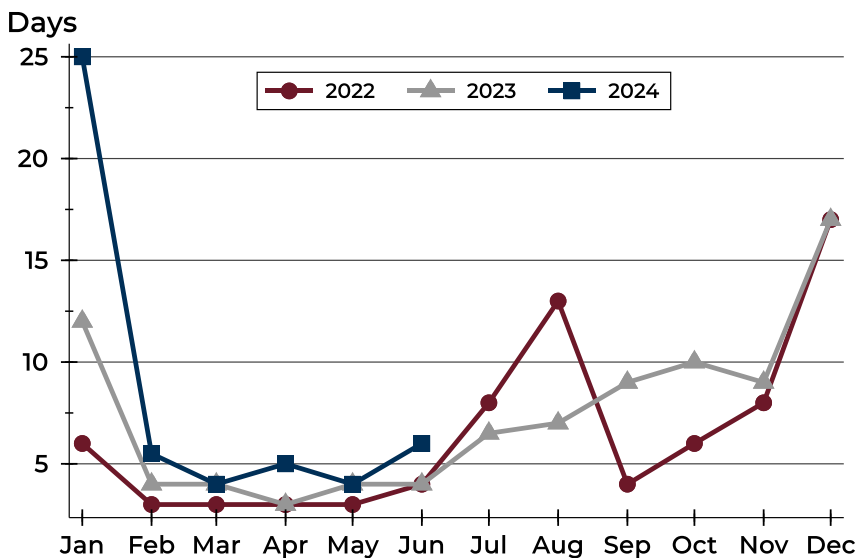
# City of Lawrence Contracts Written Analysis

## Average DOM



Month	2022	2023	2024
January	27	36	<b>38</b>
February	17	30	<b>24</b>
March	11	10	<b>17</b>
April	11	9	<b>18</b>
May	8	14	<b>15</b>
June	12	13	<b>12</b>
July	12	25	
August	20	19	
September	15	24	
October	20	25	
November	20	27	
December	31	36	

## Median DOM



Month	2022	2023	2024
January	6	12	<b>25</b>
February	3	4	<b>6</b>
March	3	4	<b>4</b>
April	3	3	<b>5</b>
May	3	4	<b>4</b>
June	4	4	<b>6</b>
July	8	7	
August	13	7	
September	4	9	
October	6	10	
November	8	9	
December	17	17	



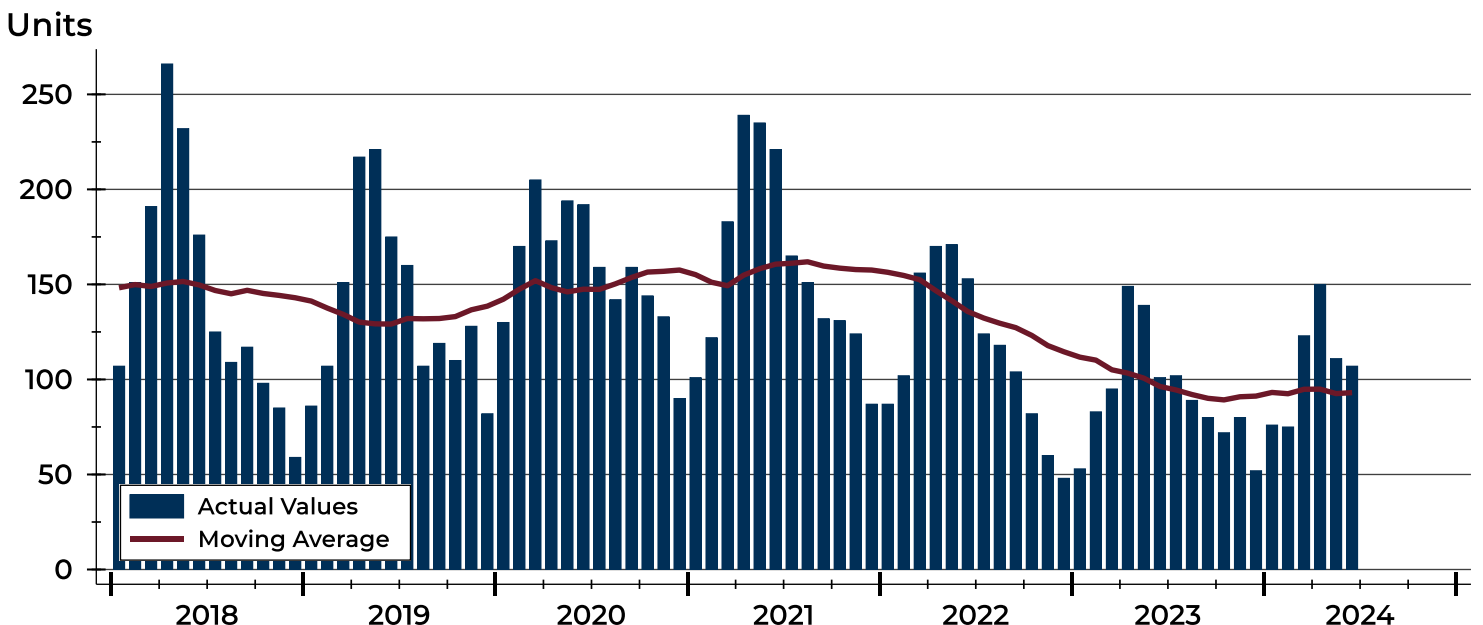
# City of Lawrence Pending Contracts Analysis

Summary Statistics for Pending Contracts		2024	End of June 2023	Change
Pending Contracts		107	101	5.9%
Volume (1,000s)		39,136	34,459	13.6%
Average	List Price	365,760	341,180	7.2%
	Days on Market	17	16	6.3%
	Percent of Original	99.0%	99.0%	0.0%
Median	List Price	324,900	300,000	8.3%
	Days on Market	7	5	40.0%
	Percent of Original	100.0%	100.0%	0.0%

A total of 107 listings in the City of Lawrence had contracts pending at the end of June, up from 101 contracts pending at the end of June 2023.

Pending contracts reflect listings with a contract in place at the end of the month. In contrast, contracts written measures the number of listings put under contract during the month.

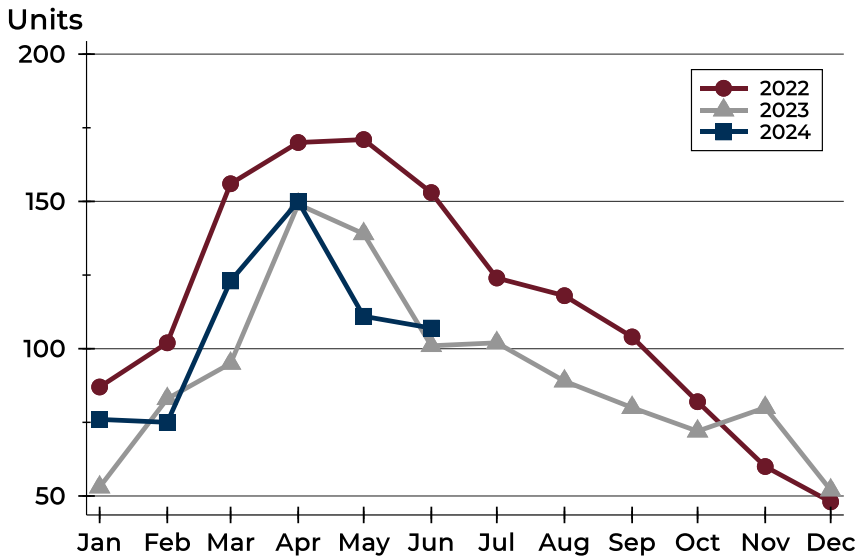
## History of Pending Contracts





## City of Lawrence Pending Contracts Analysis

### Pending Contracts by Month



Month	2022	2023	2024
January	87	53	<b>76</b>
February	102	83	<b>75</b>
March	156	95	<b>123</b>
April	170	149	<b>150</b>
May	171	139	<b>111</b>
June	153	101	<b>107</b>
July	124	102	
August	118	89	
September	104	80	
October	82	72	
November	60	80	
December	48	52	

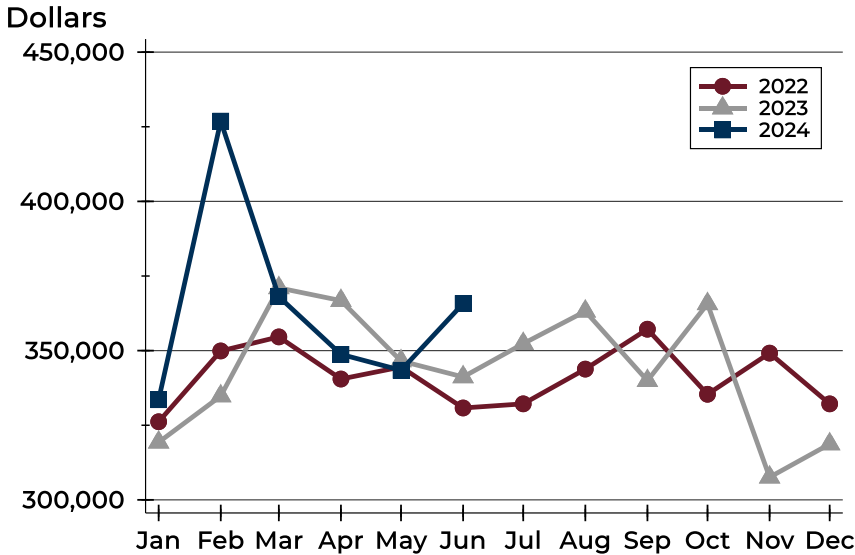
### Pending Contracts by Price Range

Price Range	Pending Contracts		List Price		Days on Market		Price as % of Orig.	
	Number	Percent	Average	Median	Avg.	Med.	Avg.	Med.
Below \$50,000	0	0.0%	N/A	N/A	N/A	N/A	N/A	N/A
\$50,000-\$99,999	0	0.0%	N/A	N/A	N/A	N/A	N/A	N/A
\$100,000-\$149,999	3	2.8%	122,650	109,000	45	24	95.8%	100.0%
\$150,000-\$199,999	8	7.5%	173,600	172,450	38	21	98.7%	100.0%
\$200,000-\$249,999	14	13.1%	226,600	229,900	12	5	99.8%	100.0%
\$250,000-\$299,999	22	20.6%	281,759	279,450	16	11	98.9%	100.0%
\$300,000-\$349,999	15	14.0%	323,187	325,000	16	13	99.1%	100.0%
\$350,000-\$399,999	12	11.2%	372,883	369,950	7	6	99.3%	100.0%
\$400,000-\$449,999	7	6.5%	419,857	415,000	14	8	99.2%	100.0%
\$450,000-\$499,999	7	6.5%	479,100	475,000	17	10	99.1%	100.0%
\$500,000-\$599,999	11	10.3%	542,609	550,000	20	3	99.8%	100.0%
\$600,000-\$749,999	5	4.7%	668,560	625,000	10	1	98.7%	100.0%
\$750,000-\$999,999	2	1.9%	890,950	890,950	23	23	94.9%	94.9%
\$1,000,000 and up	1	0.9%	1,300,000	1,300,000	7	7	100.0%	100.0%



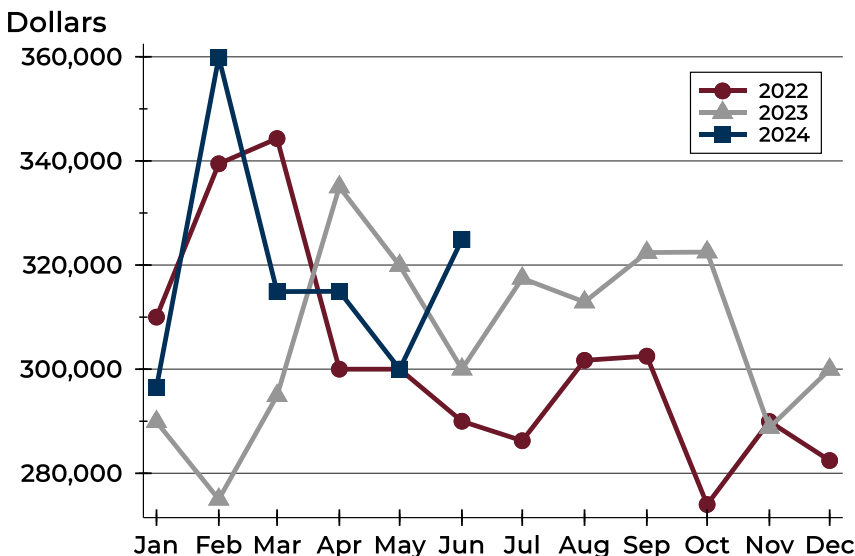
# City of Lawrence Pending Contracts Analysis

## Average Price



Month	2022	2023	2024
January	326,176	319,303	<b>333,556</b>
February	349,894	334,790	<b>426,894</b>
March	354,598	371,024	<b>368,083</b>
April	340,485	366,757	<b>348,759</b>
May	344,523	346,540	<b>343,428</b>
June	330,793	341,180	<b>365,760</b>
July	332,179	352,339	
August	343,818	363,178	
September	357,180	339,931	
October	335,385	365,678	
November	349,171	307,588	
December	332,166	318,710	

## Median Price

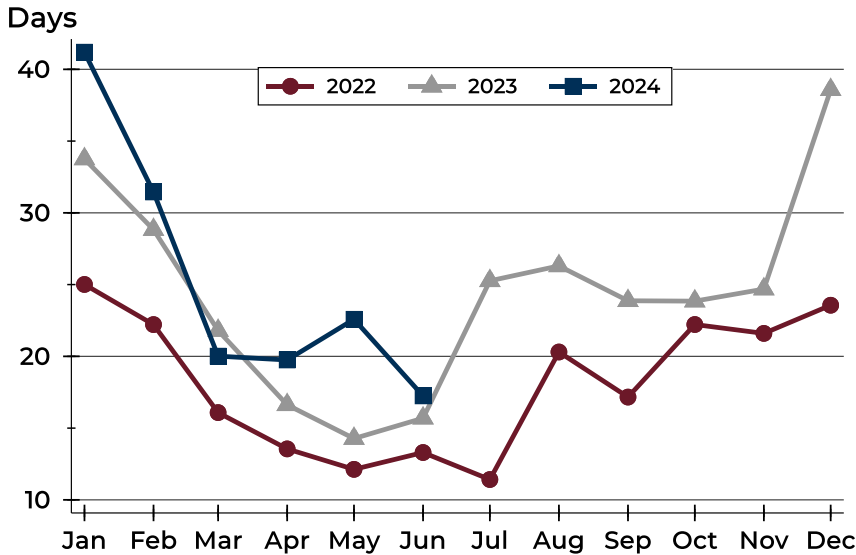


Month	2022	2023	2024
January	310,000	289,900	<b>296,500</b>
February	339,450	275,000	<b>359,900</b>
March	344,300	294,900	<b>314,900</b>
April	300,000	335,000	<b>314,950</b>
May	300,000	319,900	<b>300,000</b>
June	290,000	300,000	<b>324,900</b>
July	286,250	317,450	
August	301,700	312,900	
September	302,500	322,400	
October	274,000	322,500	
November	289,950	288,775	
December	282,450	299,950	



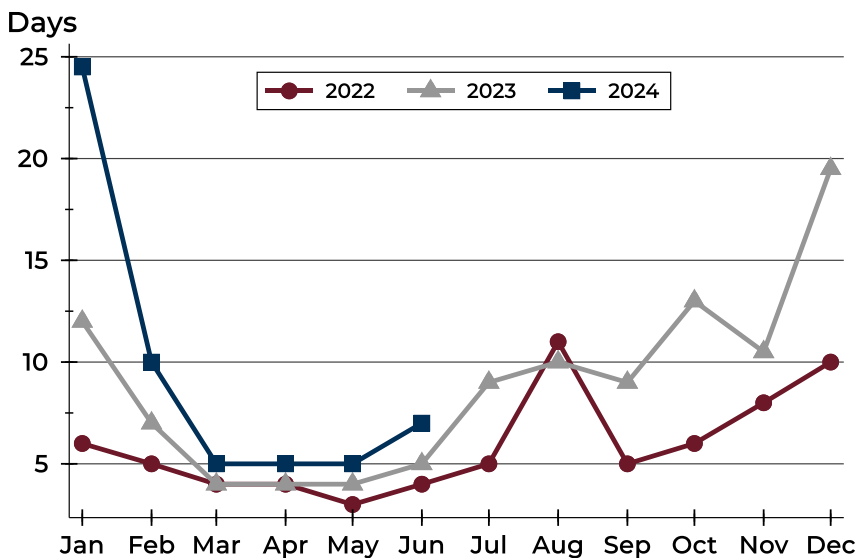
# City of Lawrence Pending Contracts Analysis

## Average DOM



Month	2022	2023	2024
January	25	34	41
February	22	29	31
March	16	22	20
April	14	17	20
May	12	14	23
June	13	16	17
July	11	25	
August	20	26	
September	17	24	
October	22	24	
November	22	25	
December	24	39	

## Median DOM



Month	2022	2023	2024
January	6	12	25
February	5	7	10
March	4	4	5
April	4	4	5
May	3	4	5
June	4	5	7
July	5	9	
August	11	10	
September	5	9	
October	6	13	
November	8	11	
December	10	20	