



**August
2023**

Lawrence MLS Statistics



Douglas County (Excluding Lawrence) Housing Report



Market Overview

Douglas County Home Sales Fell in August

Total home sales in Douglas County fell last month to 14 units, compared to 26 units in August 2022. Total sales volume was \$4.9 million, down from a year earlier.

The median sale price in August was \$336,500, up from \$311,950 a year earlier. Homes that sold in August were typically on the market for 6 days and sold for 100.0% of their list prices.

Douglas County Active Listings Up at End of August

The total number of active listings in Douglas County at the end of August was 34 units, up from 32 at the same point in 2022. This represents a 2.2 months' supply of homes available for sale. The median list price of homes on the market at the end of August was \$422,450.

During August, a total of 10 contracts were written down from 17 in August 2022. At the end of the month, there were 11 contracts still pending.

Report Contents

- Summary Statistics – Page 2
- Closed Listing Analysis – Page 3
- Active Listings Analysis – Page 7
- Months' Supply Analysis – Page 11
- New Listings Analysis – Page 12
- Contracts Written Analysis – Page 15
- Pending Contracts Analysis – Page 19

Contact Information

Rob Hulse, Executive Vice-President
 Lawrence Board of REALTORS®
 3838 W. 6th Street (at Monterey)
 Lawrence, KS 66049
 785-842-1843
Rob@LawrenceRealtor.com
www.LawrenceRealtor.com



Douglas County (Excluding Lawrence) Summary Statistics

August MLS Statistics Three-year History		Current Month			Year-to-Date		
		2023	2022	2021	2023	2022	2021
Home Sales Change from prior year	14 -46.2%	26 -16.1%	31 24.0%	112 -17.6%	136 -17.1%	164 3.1%	
Active Listings Change from prior year	34 6.3%	32 6.7%	30 -16.7%	N/A	N/A	N/A	
Months' Supply Change from prior year	2.2 29.4%	1.7 21.4%	1.4 -22.2%	N/A	N/A	N/A	
New Listings Change from prior year	18 -10.0%	20 -28.6%	28 7.7%	145 -20.3%	182 -4.7%	191 -2.6%	
Contracts Written Change from prior year	10 -41.2%	17 -26.1%	23 0.0%	114 -20.3%	143 -14.9%	168 1.2%	
Pending Contracts Change from prior year	11 -50.0%	22 10.0%	20 -28.6%	N/A	N/A	N/A	
Sales Volume (1,000s) Change from prior year	4,938 -44.1%	8,833 -30.2%	12,653 69.9%	41,707 -13.9%	48,419 -8.5%	52,898 20.6%	
Average	Sale Price Change from prior year	352,714 3.8%	339,712 -16.8%	408,148 37.0%	372,385 4.6%	356,021 10.4%	322,550 17.0%
	List Price of Actives Change from prior year	480,288 10.6%	434,338 2.9%	421,996 -8.0%	N/A	N/A	N/A
	Days on Market Change from prior year	17 112.5%	8 0.0%	8 -68.0%	30 150.0%	12 -33.3%	18 -37.9%
	Percent of List Change from prior year	99.9% 1.5%	98.4% -3.1%	101.5% 0.1%	99.2% -0.8%	100.0% -0.6%	100.6% 1.4%
	Percent of Original Change from prior year	98.7% 1.8%	97.0% -4.0%	101.0% 0.7%	98.4% -0.7%	99.1% -0.4%	99.5% 1.1%
Median	Sale Price Change from prior year	336,500 7.9%	311,950 -10.8%	349,900 33.0%	347,500 8.3%	320,950 17.0%	274,250 11.9%
	List Price of Actives Change from prior year	422,450 12.0%	377,200 7.0%	352,450 17.9%	N/A	N/A	N/A
	Days on Market Change from prior year	6 20.0%	5 25.0%	4 -33.3%	6 50.0%	4 0.0%	4 -42.9%
	Percent of List Change from prior year	100.0% 0.8%	99.2% -0.8%	100.0% 0.0%	100.0% 0.0%	100.0% 0.0%	100.0% 0.0%
	Percent of Original Change from prior year	99.8% 1.8%	98.0% -2.0%	100.0% 0.0%	100.0% 0.0%	100.0% 0.0%	100.0% 0.0%

Note: Year-to-date statistics cannot be calculated for Active Listings, Months' Supply and Pending Contracts.



Douglas County (Excluding Lawrence) Closed Listings Analysis

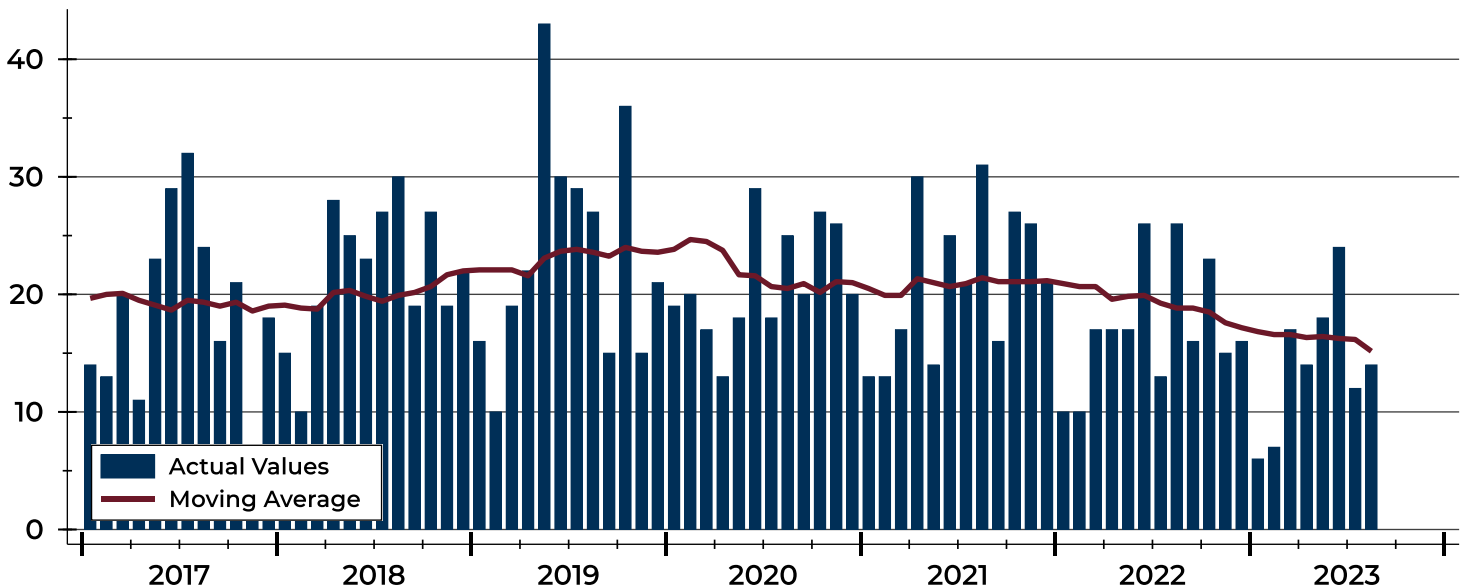
Summary Statistics for Closed Listings		2023	August 2022	Change	2023	Year-to-Date 2022	Change
Closed Listings		14	26	-46.2%	112	136	-17.6%
Volume (1,000s)		4,938	8,833	-44.1%	41,707	48,419	-13.9%
Months' Supply		2.2	1.7	29.4%	N/A	N/A	N/A
Average	Sale Price	352,714	339,712	3.8%	372,385	356,021	4.6%
	Days on Market	17	8	112.5%	30	12	150.0%
	Percent of List	99.9%	98.4%	1.5%	99.2%	100.0%	-0.8%
	Percent of Original	98.7%	97.0%	1.8%	98.4%	99.1%	-0.7%
Median	Sale Price	336,500	311,950	7.9%	347,500	320,950	8.3%
	Days on Market	6	5	20.0%	6	4	50.0%
	Percent of List	100.0%	99.2%	0.8%	100.0%	100.0%	0.0%
	Percent of Original	99.8%	98.0%	1.8%	100.0%	100.0%	0.0%

A total of 14 homes sold in Douglas County in August, down from 26 units in August 2022. Total sales volume fell to \$4.9 million compared to \$8.8 million in the previous year.

The median sales price in August was \$336,500, up 7.9% compared to the prior year. Median days on market was 6 days, up from 5 days in July, and up from 5 in August 2022.

History of Closed Listings

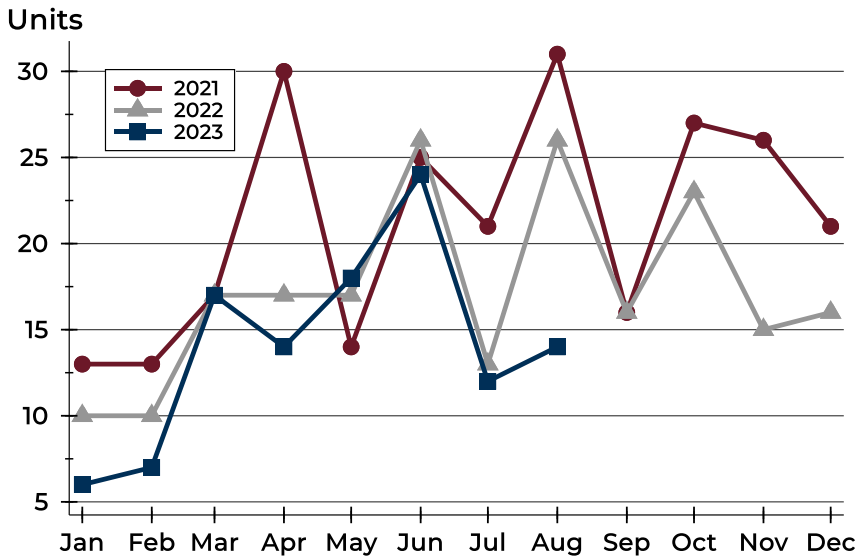
Units





Douglas County (Excluding Lawrence) Closed Listings Analysis

Closed Listings by Month



Month	2021	2022	2023
January	13	10	6
February	13	10	7
March	17	17	17
April	30	17	14
May	14	17	18
June	25	26	24
July	21	13	12
August	31	26	14
September	16	16	
October	27	23	
November	26	15	
December	21	16	

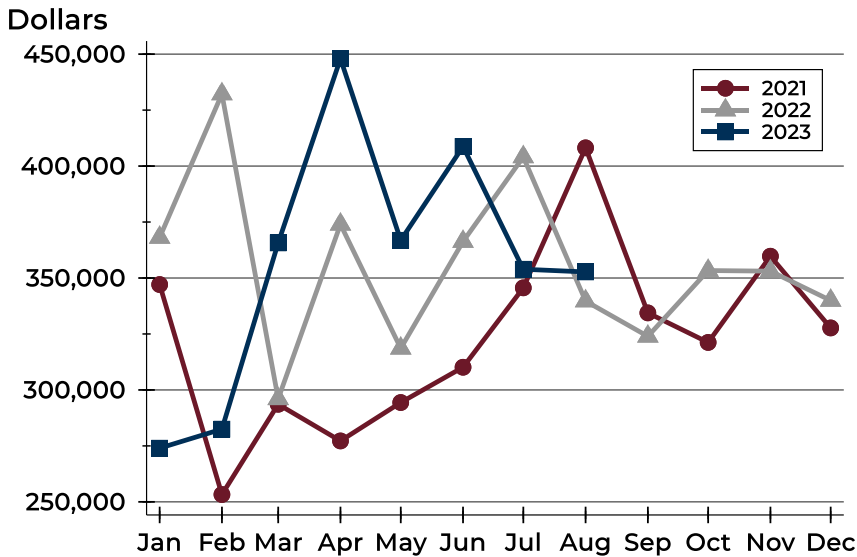
Closed Listings by Price Range

Price Range	Sales		Months' Supply	Sale Price		Days on Market		Price as % of List		Price as % of Orig.	
	Number	Percent		Average	Median	Avg.	Med.	Avg.	Med.	Avg.	Med.
Below \$50,000	0	0.0%	N/A	N/A	N/A	N/A	N/A	N/A	N/A	N/A	N/A
\$50,000-\$99,999	0	0.0%	N/A	N/A	N/A	N/A	N/A	N/A	N/A	N/A	N/A
\$100,000-\$149,999	0	0.0%	N/A	N/A	N/A	N/A	N/A	N/A	N/A	N/A	N/A
\$150,000-\$199,999	2	14.3%	0.9	182,250	182,250	6	6	100.0%	100.0%	100.0%	100.0%
\$200,000-\$249,999	2	14.3%	1.6	232,500	232,500	4	4	101.4%	101.4%	101.4%	101.4%
\$250,000-\$299,999	2	14.3%	0.4	280,000	280,000	0	0	100.0%	100.0%	100.0%	100.0%
\$300,000-\$349,999	1	7.1%	1.1	318,000	318,000	5	5	99.7%	99.7%	99.7%	99.7%
\$350,000-\$399,999	3	21.4%	2.2	365,833	357,500	12	10	99.1%	100.0%	99.1%	100.0%
\$400,000-\$449,999	0	0.0%	N/A	N/A	N/A	N/A	N/A	N/A	N/A	N/A	N/A
\$450,000-\$499,999	1	7.1%	4.0	455,000	455,000	105	105	98.9%	98.9%	98.9%	98.9%
\$500,000-\$599,999	2	14.3%	3.7	535,000	535,000	35	35	100.9%	100.9%	92.2%	92.2%
\$600,000-\$749,999	1	7.1%	1.8	608,000	608,000	2	2	98.1%	98.1%	98.1%	98.1%
\$750,000-\$999,999	0	0.0%	N/A	N/A	N/A	N/A	N/A	N/A	N/A	N/A	N/A
\$1,000,000 and up	0	0.0%	N/A	N/A	N/A	N/A	N/A	N/A	N/A	N/A	N/A



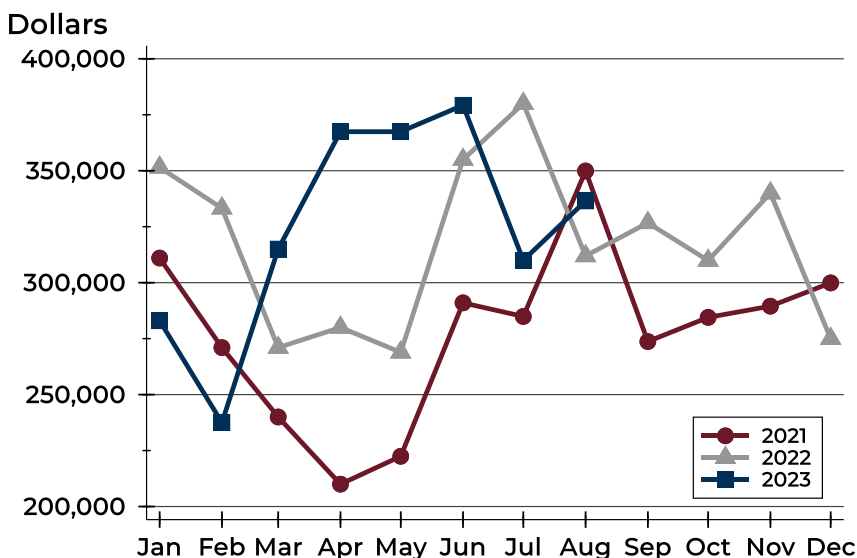
Douglas County (Excluding Lawrence) Closed Listings Analysis

Average Price



Month	2021	2022	2023
January	347,077	368,105	274,000
February	253,285	432,200	282,500
March	293,600	296,024	365,665
April	277,227	373,982	447,947
May	294,379	318,604	366,850
June	310,146	366,298	408,741
July	345,614	404,092	353,919
August	408,148	339,712	352,714
September	334,425	323,954	
October	321,227	353,335	
November	359,738	353,067	
December	327,702	339,975	

Median Price

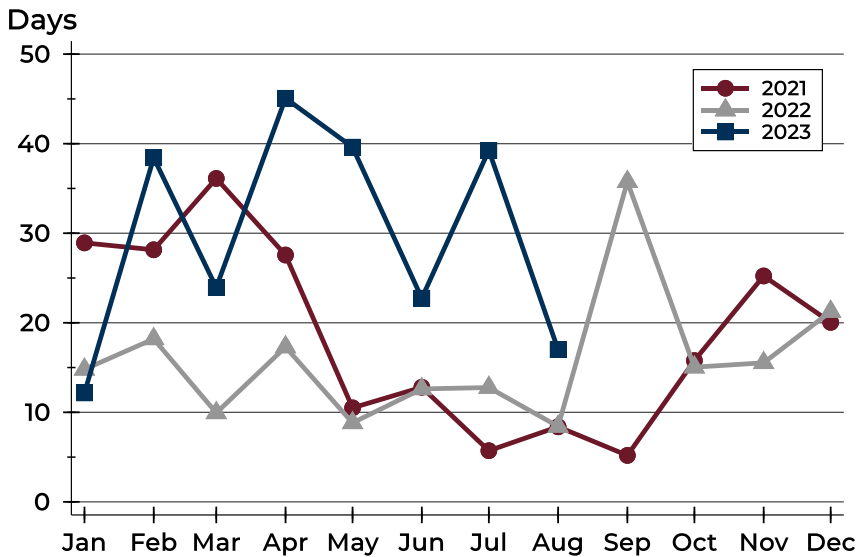


Month	2021	2022	2023
January	311,000	351,500	283,000
February	271,000	333,250	237,500
March	240,000	271,000	315,000
April	210,000	280,000	367,450
May	222,450	268,900	367,450
June	291,000	355,000	379,250
July	284,900	380,000	310,000
August	349,900	311,950	336,500
September	273,700	326,735	
October	284,500	309,900	
November	289,500	340,000	
December	299,900	275,000	



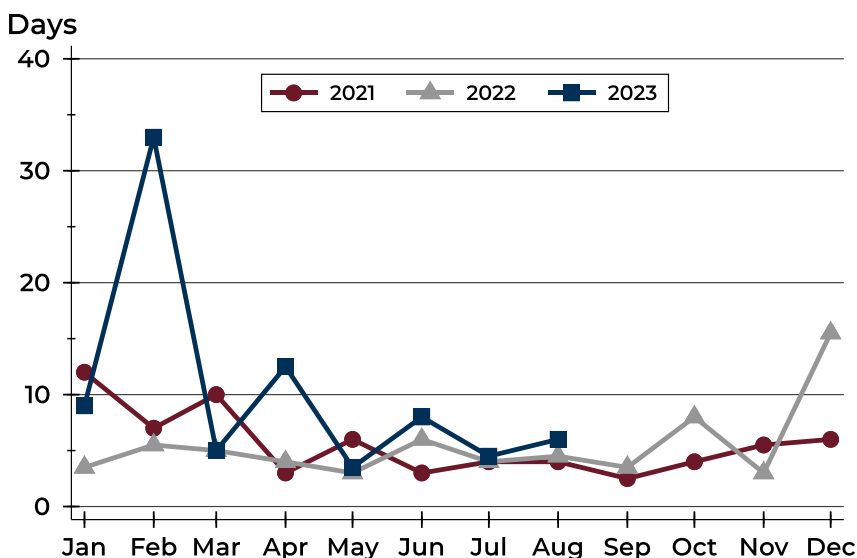
Douglas County (Excluding Lawrence) Closed Listings Analysis

Average DOM



Month	2021	2022	2023
January	29	15	12
February	28	18	38
March	36	10	24
April	28	17	45
May	11	9	40
June	13	13	23
July	6	13	39
August	8	8	17
September	5	36	
October	16	15	
November	25	16	
December	20	21	

Median DOM



Month	2021	2022	2023
January	12	4	9
February	7	6	33
March	10	5	5
April	3	4	13
May	6	3	4
June	3	6	8
July	4	4	5
August	4	5	6
September	3	4	
October	4	8	
November	6	3	
December	6	16	



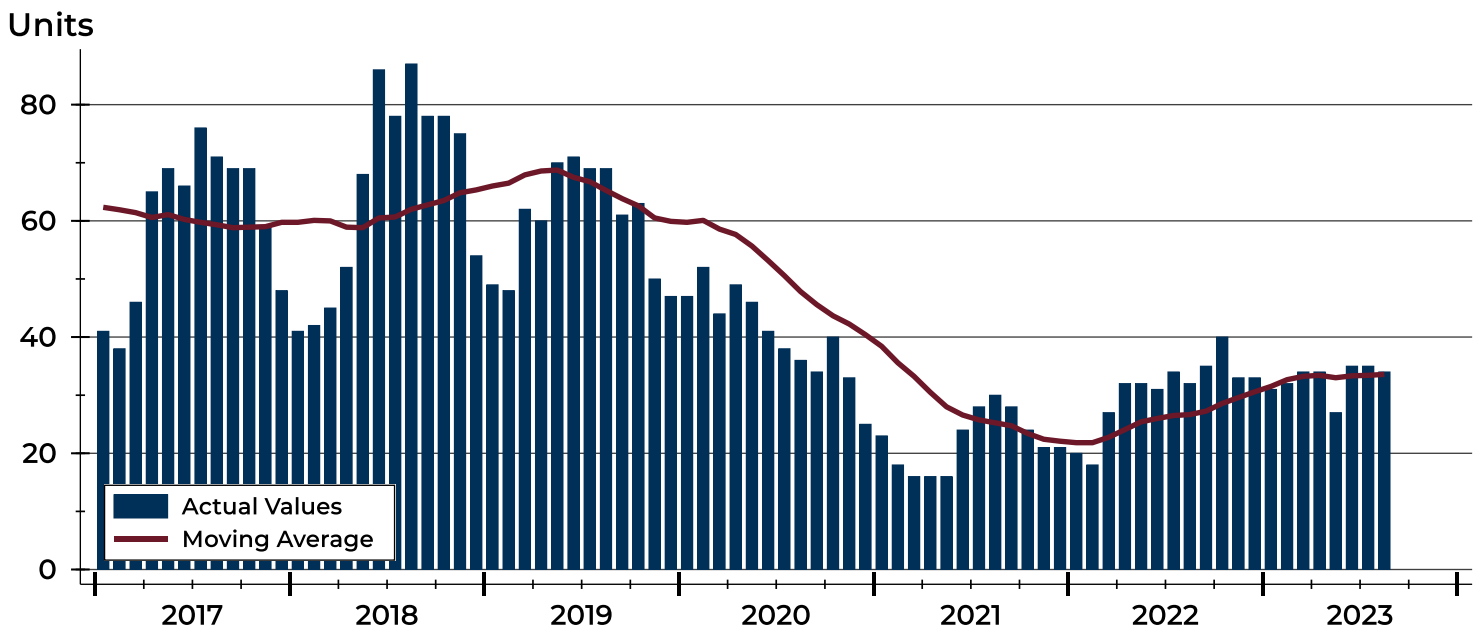
Douglas County (Excluding Lawrence) Active Listings Analysis

Summary Statistics for Active Listings		2023	End of August 2022	Change
Active Listings		34	32	6.3%
Volume (1,000s)		16,330	13,899	17.5%
Months' Supply		2.2	1.7	29.4%
Average	List Price	480,288	434,338	10.6%
	Days on Market	52	58	-10.3%
	Percent of Original	98.1%	99.3%	-1.2%
Median	List Price	422,450	377,200	12.0%
	Days on Market	38	39	-2.6%
	Percent of Original	100.0%	100.0%	0.0%

A total of 34 homes were available for sale in Douglas County at the end of August. This represents a 2.2 months' supply of active listings.

The median list price of homes on the market at the end of August was \$422,450, up 12.0% from 2022. The typical time on market for active listings was 38 days, down from 39 days a year earlier.

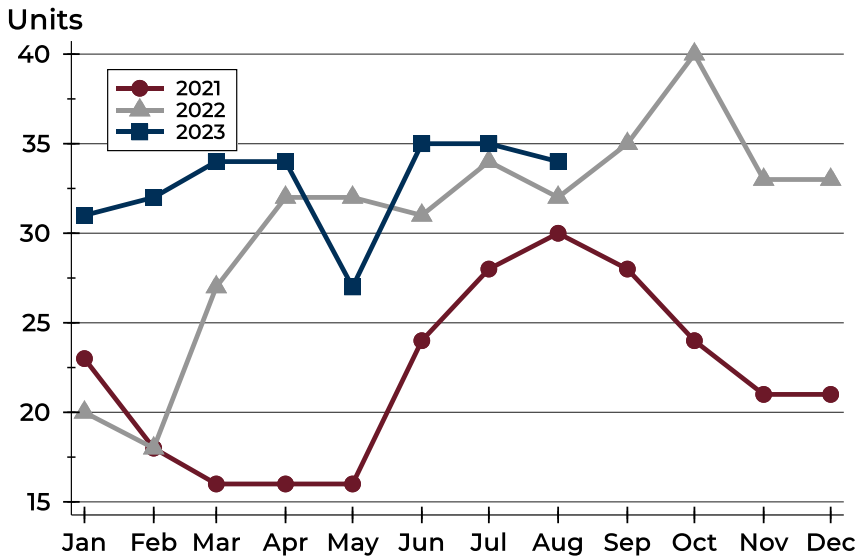
History of Active Listings





Douglas County (Excluding Lawrence) Active Listings Analysis

Active Listings by Month



Month	2021	2022	2023
January	23	20	31
February	18	18	32
March	16	27	34
April	16	32	34
May	16	32	27
June	24	31	35
July	28	34	35
August	30	32	34
September	28	35	
October	24	40	
November	21	33	
December	21	33	

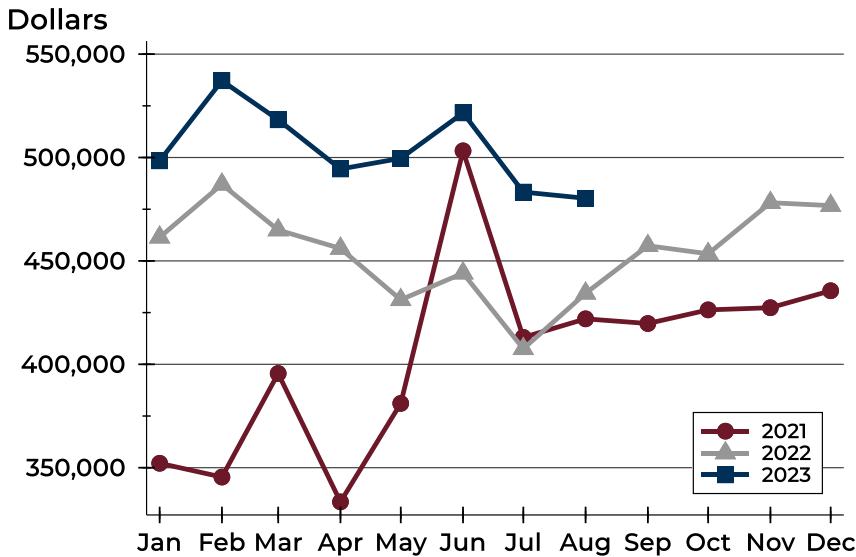
Active Listings by Price Range

Price Range	Active Listings		Months' Supply	List Price		Days on Market		Price as % of Orig.	
	Number	Percent		Average	Median	Avg.	Med.	Avg.	Med.
Below \$50,000	0	0.0%	N/A	N/A	N/A	N/A	N/A	N/A	N/A
\$50,000-\$99,999	0	0.0%	N/A	N/A	N/A	N/A	N/A	N/A	N/A
\$100,000-\$149,999	1	2.9%	N/A	115,000	115,000	39	39	100.0%	100.0%
\$150,000-\$199,999	1	2.9%	0.9	155,000	155,000	56	56	100.0%	100.0%
\$200,000-\$249,999	3	8.8%	1.6	217,300	212,000	31	39	98.9%	100.0%
\$250,000-\$299,999	1	2.9%	0.4	288,500	288,500	6	6	100.0%	100.0%
\$300,000-\$349,999	2	5.9%	1.1	314,950	314,950	18	18	98.5%	98.5%
\$350,000-\$399,999	6	17.6%	2.2	376,467	377,475	34	33	96.6%	97.4%
\$400,000-\$449,999	6	17.6%	N/A	428,315	422,450	70	67	95.7%	98.3%
\$450,000-\$499,999	4	11.8%	4.0	483,475	489,500	35	43	97.5%	100.0%
\$500,000-\$599,999	4	11.8%	3.7	555,975	557,450	30	14	100.0%	100.0%
\$600,000-\$749,999	2	5.9%	1.8	682,000	682,000	21	21	100.0%	100.0%
\$750,000-\$999,999	3	8.8%	N/A	888,000	874,000	95	88	99.8%	100.0%
\$1,000,000 and up	1	2.9%	N/A	1,475,000	1,475,000	331	331	98.3%	98.3%



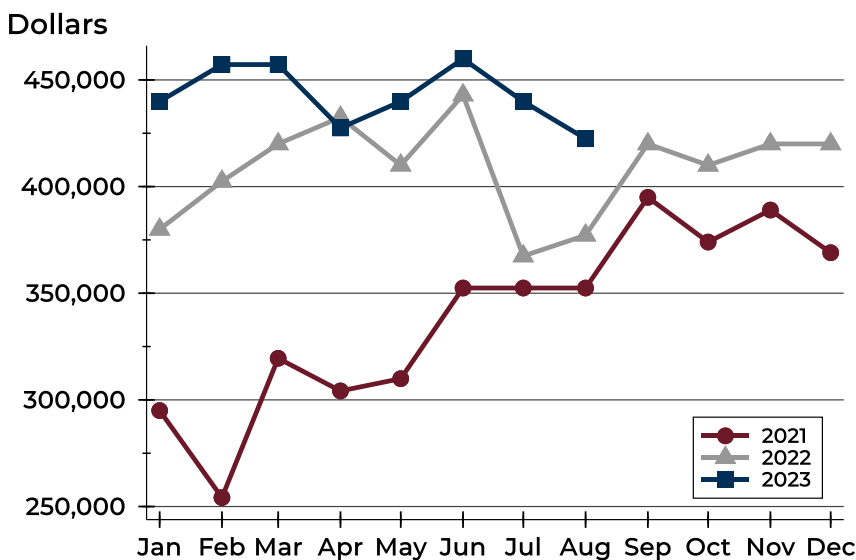
Douglas County (Excluding Lawrence) Active Listings Analysis

Average Price



Month	2021	2022	2023
January	352,137	461,451	498,411
February	345,489	487,044	537,148
March	395,581	464,954	518,268
April	333,478	456,028	494,481
May	381,094	431,219	499,596
June	503,244	444,073	521,596
July	413,024	407,518	483,293
August	421,996	434,338	480,288
September	419,736	457,347	
October	426,332	453,461	
November	427,369	478,162	
December	435,574	476,750	

Median Price

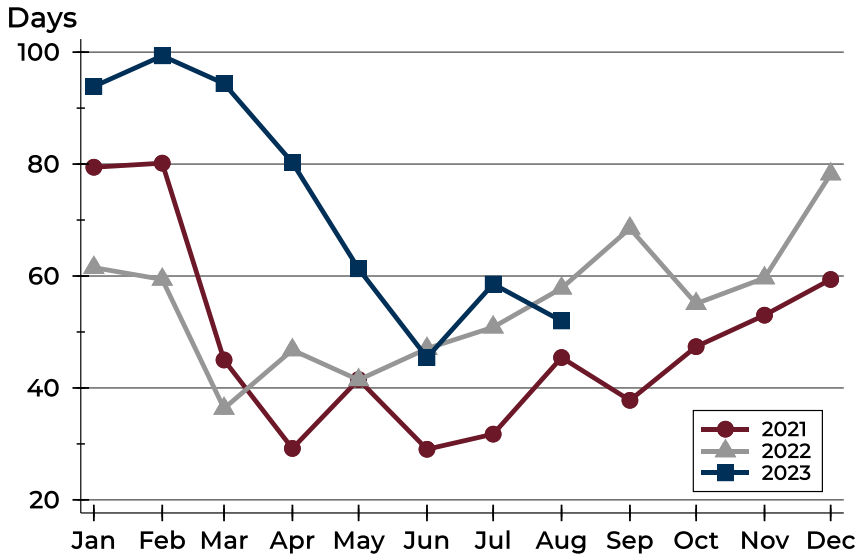


Month	2021	2022	2023
January	295,000	379,950	439,900
February	254,200	402,450	457,200
March	319,500	420,000	457,200
April	304,200	432,450	427,500
May	309,950	410,000	439,900
June	352,450	442,900	459,900
July	352,450	367,450	439,900
August	352,450	377,200	422,450
September	394,950	420,000	
October	374,000	409,975	
November	389,000	420,000	
December	369,000	420,000	



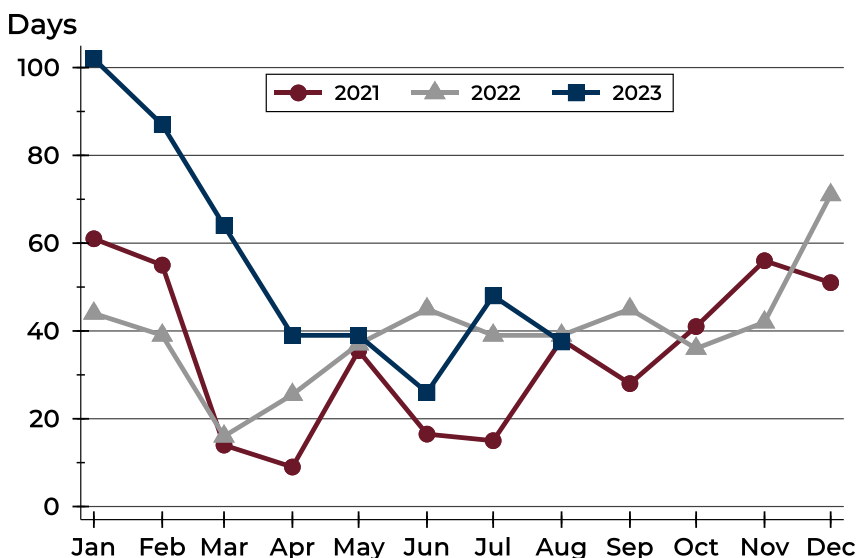
Douglas County (Excluding Lawrence) Active Listings Analysis

Average DOM



Month	2021	2022	2023
January	79	62	94
February	80	59	99
March	45	36	94
April	29	47	80
May	42	41	61
June	29	47	45
July	32	51	59
August	45	58	52
September	38	69	
October	47	55	
November	53	60	
December	59	78	

Median DOM

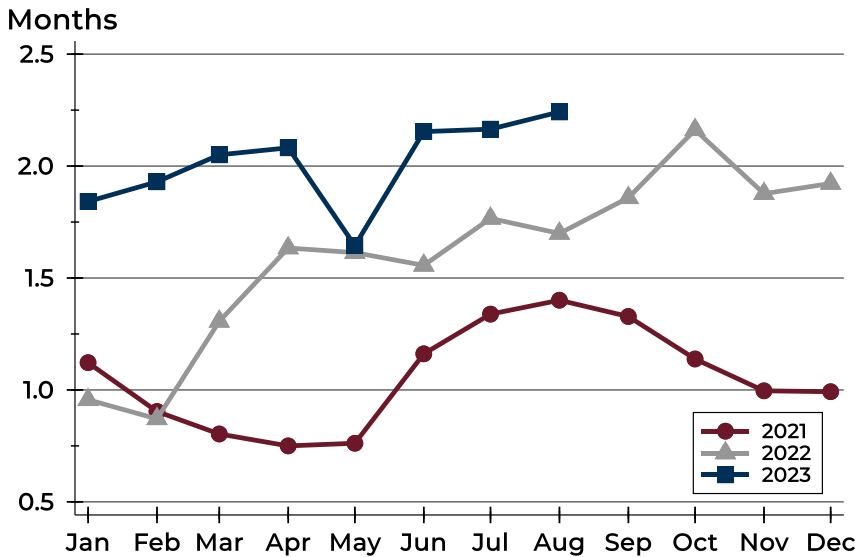


Month	2021	2022	2023
January	61	44	102
February	55	39	87
March	14	16	64
April	9	26	39
May	36	37	39
June	17	45	26
July	15	39	48
August	38	39	38
September	28	45	
October	41	36	
November	56	42	
December	51	71	



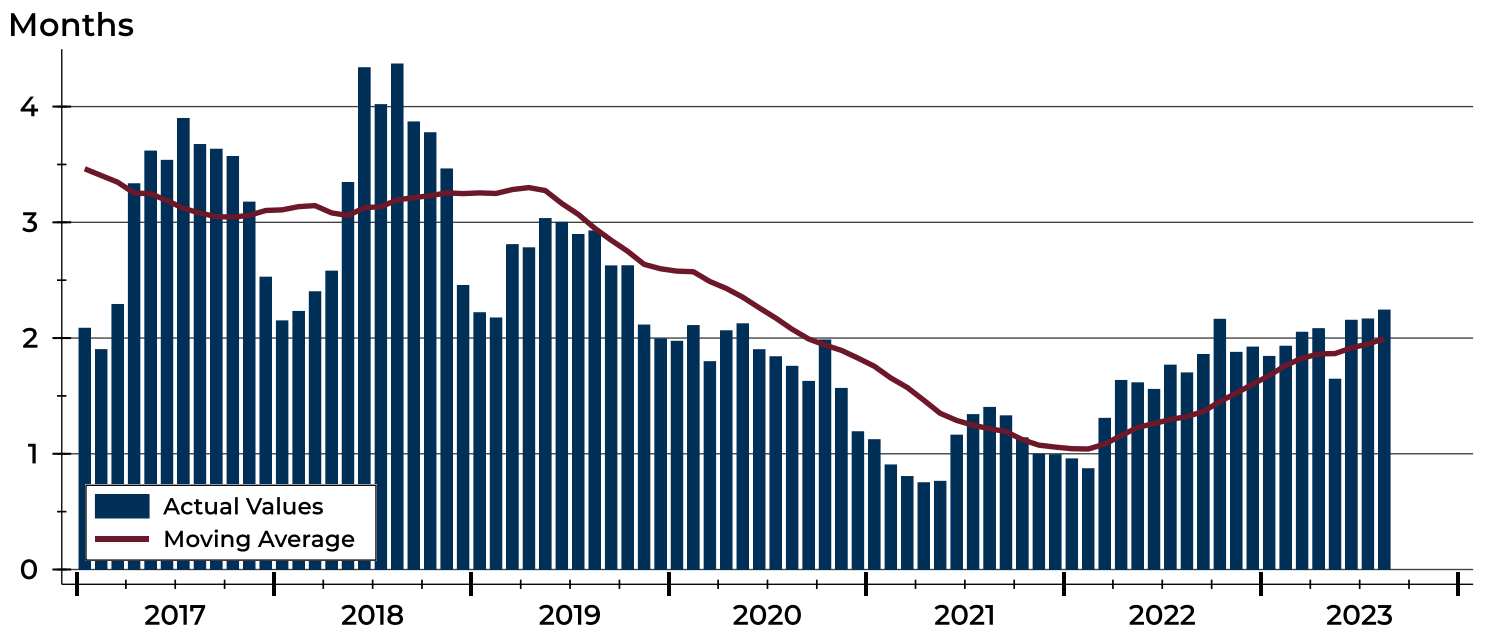
Douglas County (Excluding Lawrence) Months' Supply Analysis

Months' Supply by Month



Month	2021	2022	2023
January	1.1	1.0	1.8
February	0.9	0.9	1.9
March	0.8	1.3	2.1
April	0.8	1.6	2.1
May	0.8	1.6	1.6
June	1.2	1.6	2.2
July	1.3	1.8	2.2
August	1.4	1.7	2.2
September	1.3	1.9	
October	1.1	2.2	
November	1.0	1.9	
December	1.0	1.9	

History of Month's Supply





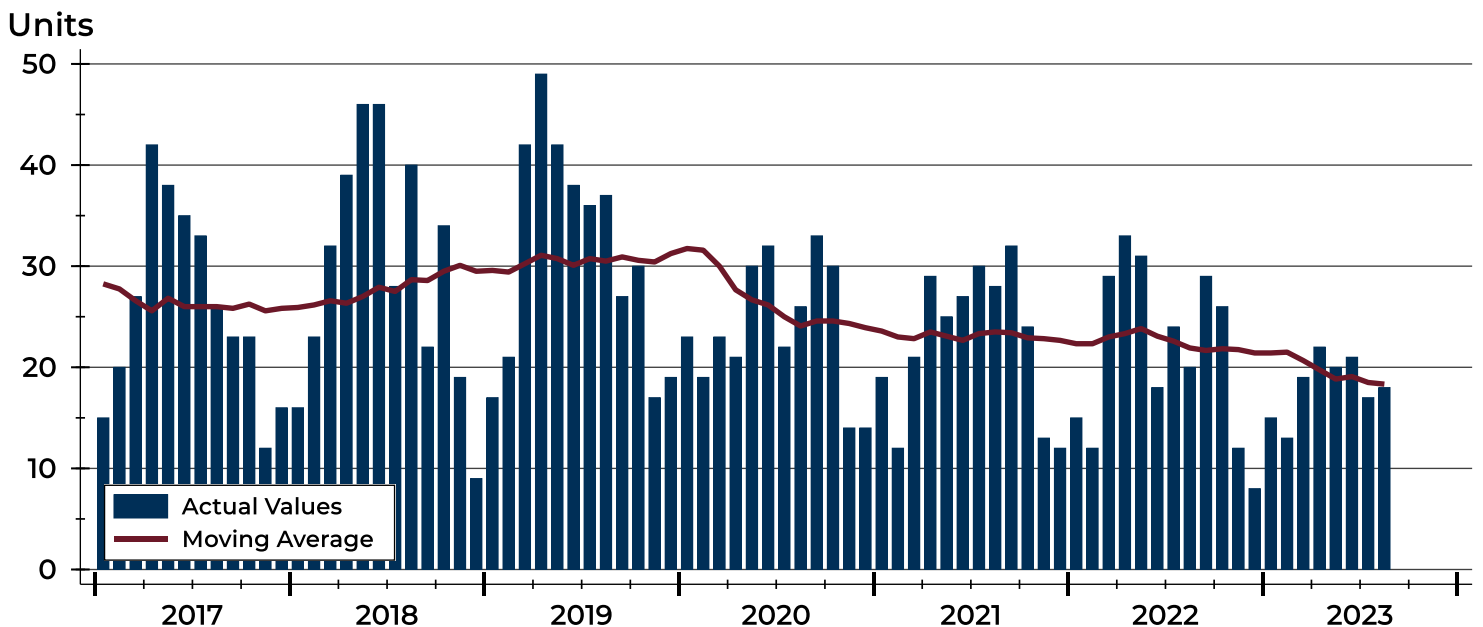
Douglas County (Excluding Lawrence) New Listings Analysis

Summary Statistics for New Listings		2023	August 2022	Change
Current Month	New Listings	18	20	-10.0%
	Volume (1,000s)	7,966	7,753	2.7%
	Average List Price	442,542	387,640	14.2%
	Median List Price	407,000	329,900	23.4%
Year-to-Date	New Listings	145	182	-20.3%
	Volume (1,000s)	61,813	66,338	-6.8%
	Average List Price	426,294	364,497	17.0%
	Median List Price	369,900	334,950	10.4%

A total of 18 new listings were added in Douglas County during August, down 10.0% from the same month in 2022. Year-to-date Douglas County has seen 145 new listings.

The median list price of these homes was \$407,000 up from \$329,900 in 2022.

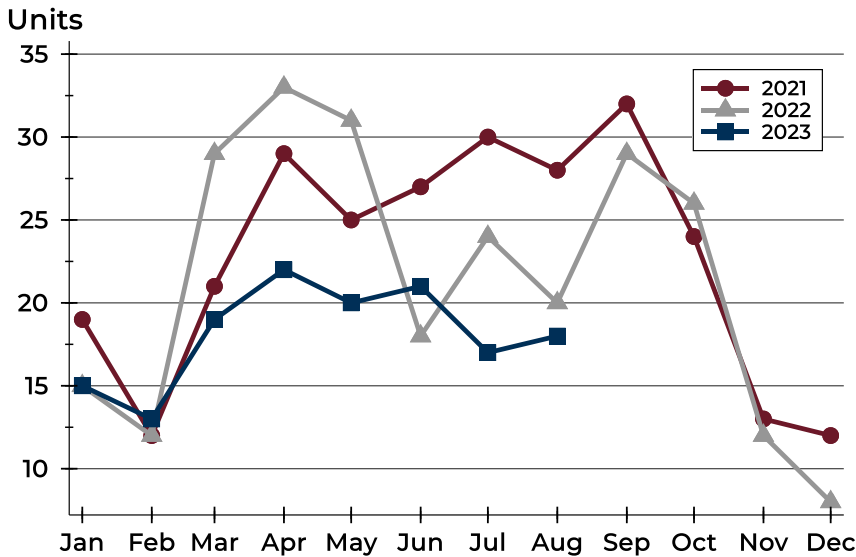
History of New Listings





Douglas County (Excluding Lawrence) New Listings Analysis

New Listings by Month



Month	2021	2022	2023
January	19	15	15
February	12	12	13
March	21	29	19
April	29	33	22
May	25	31	20
June	27	18	21
July	30	24	17
August	28	20	18
September	32	29	
October	24	26	
November	13	12	
December	12	8	

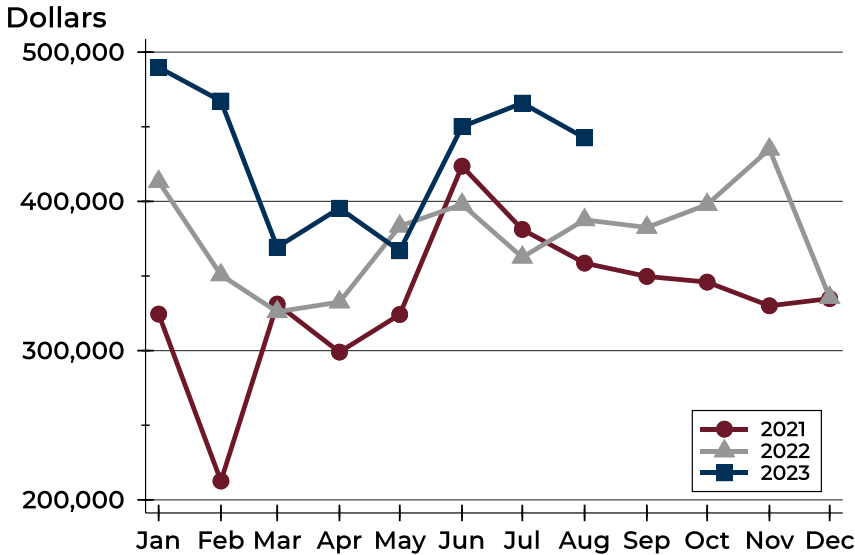
New Listings by Price Range

Price Range	New Listings		List Price		Days on Market		Price as % of Orig.	
	Number	Percent	Average	Median	Avg.	Med.	Avg.	Med.
Below \$50,000	0	0.0%	N/A	N/A	N/A	N/A	N/A	N/A
\$50,000-\$99,999	0	0.0%	N/A	N/A	N/A	N/A	N/A	N/A
\$100,000-\$149,999	0	0.0%	N/A	N/A	N/A	N/A	N/A	N/A
\$150,000-\$199,999	0	0.0%	N/A	N/A	N/A	N/A	N/A	N/A
\$200,000-\$249,999	2	11.1%	222,200	222,200	6	6	100.0%	100.0%
\$250,000-\$299,999	1	5.6%	285,000	285,000	0	0	100.0%	100.0%
\$300,000-\$349,999	2	11.1%	317,500	317,500	8	8	100.0%	100.0%
\$350,000-\$399,999	4	22.2%	374,613	374,725	13	8	97.7%	100.0%
\$400,000-\$449,999	2	11.1%	430,000	430,000	22	22	100.0%	100.0%
\$450,000-\$499,999	1	5.6%	490,000	490,000	9	9	100.0%	100.0%
\$500,000-\$599,999	3	16.7%	571,300	565,000	17	17	100.0%	100.0%
\$600,000-\$749,999	3	16.7%	679,667	675,000	20	16	100.0%	100.0%
\$750,000-\$999,999	0	0.0%	N/A	N/A	N/A	N/A	N/A	N/A
\$1,000,000 and up	0	0.0%	N/A	N/A	N/A	N/A	N/A	N/A



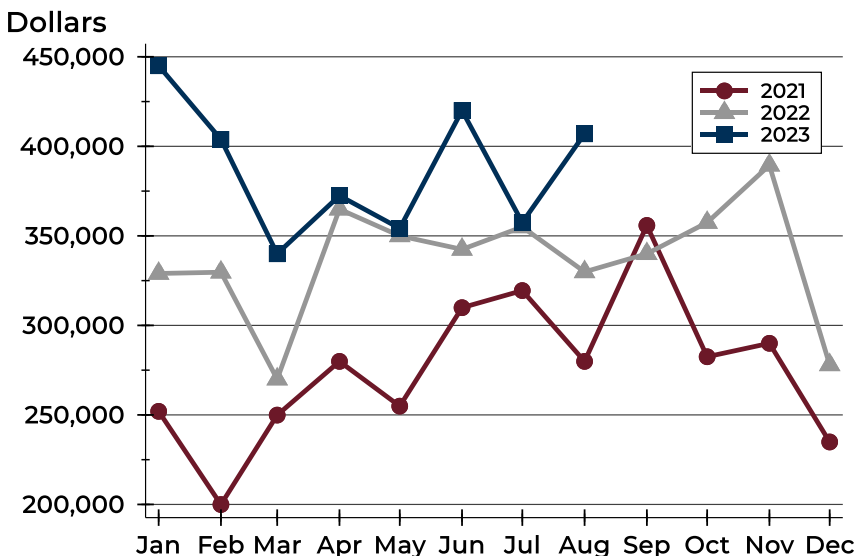
Douglas County (Excluding Lawrence) New Listings Analysis

Average Price



Month	2021	2022	2023
January	324,484	413,313	489,773
February	212,625	350,733	467,265
March	331,185	326,003	369,332
April	299,009	332,542	395,430
May	324,190	383,381	366,905
June	423,602	397,978	450,052
July	381,211	362,533	465,876
August	358,637	387,640	442,542
September	349,719	382,524	
October	345,919	397,898	
November	330,035	434,958	
December	334,867	335,600	

Median Price



Month	2021	2022	2023
January	252,000	329,000	445,000
February	199,950	329,700	403,900
March	249,900	270,000	340,000
April	279,900	364,900	372,450
May	254,900	350,000	354,200
June	309,900	342,450	419,990
July	319,450	355,000	357,500
August	279,900	329,900	407,000
September	355,825	340,000	
October	282,500	357,450	
November	290,000	389,450	
December	234,900	277,950	

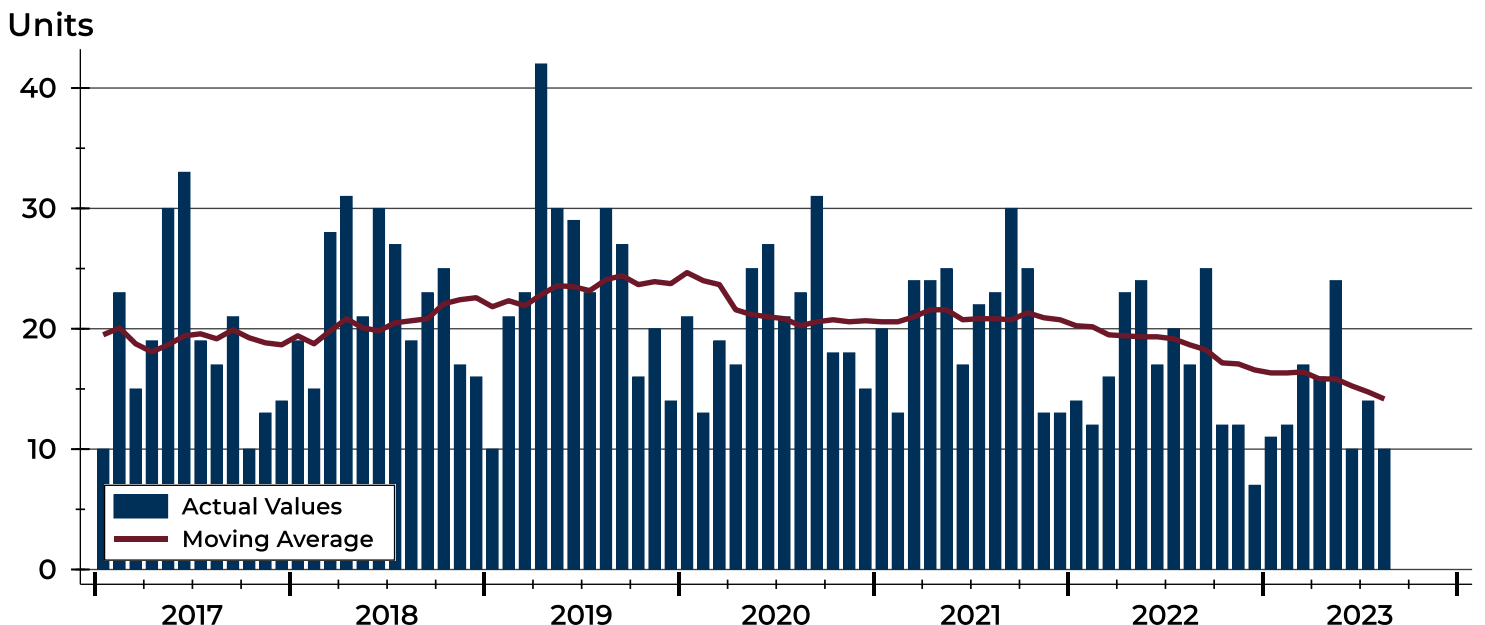


Douglas County (Excluding Lawrence) Contracts Written Analysis

Summary Statistics for Contracts Written		2023	August 2022	Change	2023	Year-to-Date 2022	Change
Contracts Written		10	17	-41.2%	114	143	-20.3%
Volume (1,000s)		3,564	5,609	-36.5%	43,999	51,447	-14.5%
Average	Sale Price	356,360	329,949	8.0%	385,960	359,770	7.3%
	Days on Market	32	18	77.8%	31	15	106.7%
	Percent of Original	97.9%	97.4%	0.5%	98.6%	98.3%	0.3%
Median	Sale Price	305,000	279,900	9.0%	350,000	325,000	7.7%
	Days on Market	9	2	350.0%	6	4	50.0%
	Percent of Original	100.0%	97.0%	3.1%	100.0%	100.0%	0.0%

A total of 10 contracts for sale were written in Douglas County during the month of August, down from 17 in 2022. The median list price of these homes was \$305,000, up from \$279,900 the prior year. Half of the homes that went under contract in August were on the market less than 9 days, compared to 2 days in August 2022.

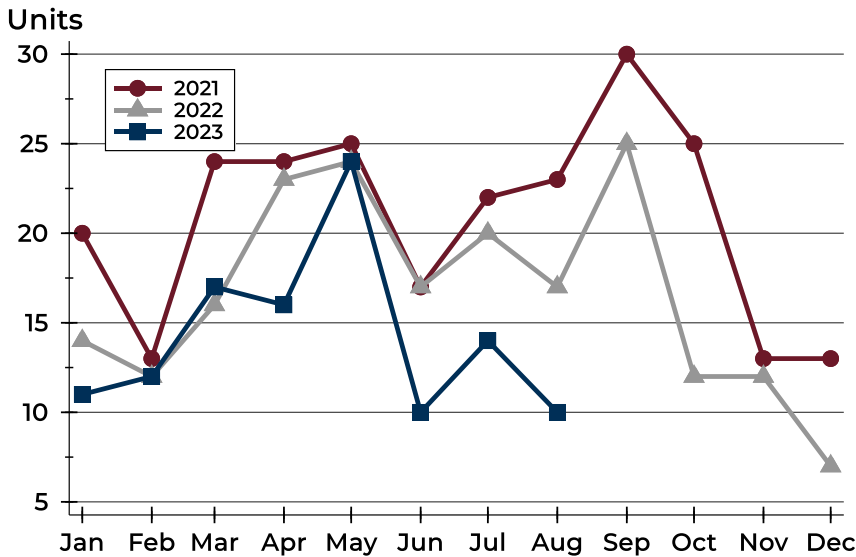
History of Contracts Written





Douglas County (Excluding Lawrence) Contracts Written Analysis

Contracts Written by Month



Month	2021	2022	2023
January	20	14	11
February	13	12	12
March	24	16	17
April	24	23	16
May	25	24	24
June	17	17	10
July	22	20	14
August	23	17	10
September	30	25	
October	25	12	
November	13	12	
December	13	7	

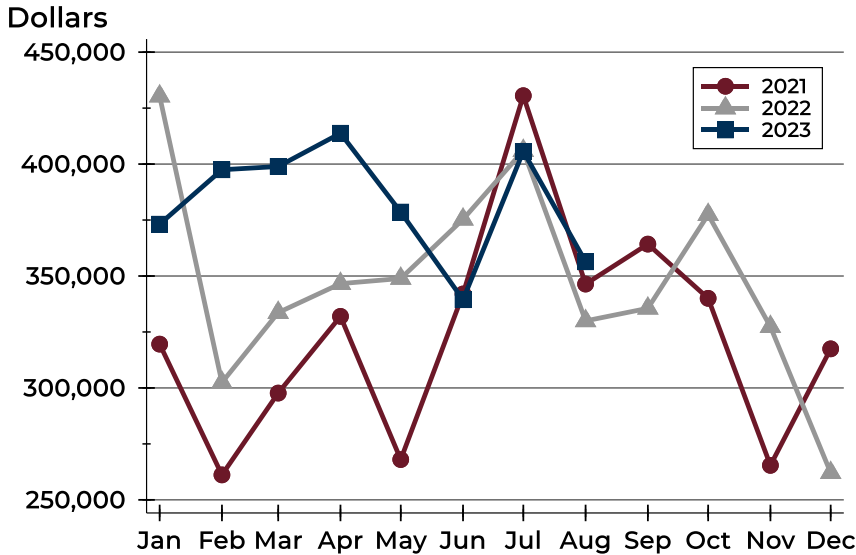
Contracts Written by Price Range

Price Range	Contracts Written		List Price		Days on Market		Price as % of Orig.	
	Number	Percent	Average	Median	Avg.	Med.	Avg.	Med.
Below \$50,000	0	0.0%	N/A	N/A	N/A	N/A	N/A	N/A
\$50,000-\$99,999	0	0.0%	N/A	N/A	N/A	N/A	N/A	N/A
\$100,000-\$149,999	0	0.0%	N/A	N/A	N/A	N/A	N/A	N/A
\$150,000-\$199,999	0	0.0%	N/A	N/A	N/A	N/A	N/A	N/A
\$200,000-\$249,999	4	40.0%	220,950	224,700	7	8	101.2%	100.0%
\$250,000-\$299,999	1	10.0%	285,000	285,000	0	0	100.0%	100.0%
\$300,000-\$349,999	2	20.0%	337,450	337,450	67	67	96.7%	96.7%
\$350,000-\$399,999	0	0.0%	N/A	N/A	N/A	N/A	N/A	N/A
\$400,000-\$449,999	0	0.0%	N/A	N/A	N/A	N/A	N/A	N/A
\$450,000-\$499,999	1	10.0%	495,000	495,000	90	90	94.3%	94.3%
\$500,000-\$599,999	1	10.0%	549,900	549,900	58	58	86.4%	86.4%
\$600,000-\$749,999	1	10.0%	675,000	675,000	7	7	100.0%	100.0%
\$750,000-\$999,999	0	0.0%	N/A	N/A	N/A	N/A	N/A	N/A
\$1,000,000 and up	0	0.0%	N/A	N/A	N/A	N/A	N/A	N/A



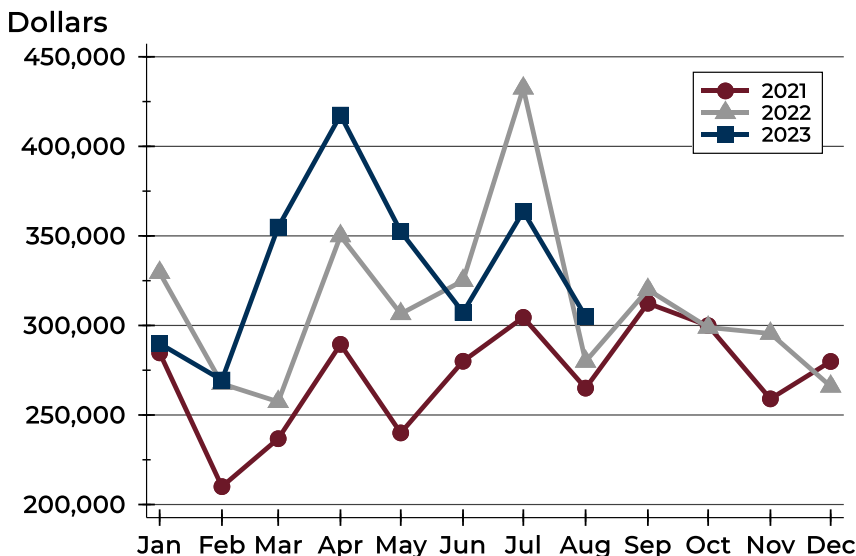
Douglas County (Excluding Lawrence) Contracts Written Analysis

Average Price



Month	2021	2022	2023
January	319,578	430,343	373,164
February	261,162	302,442	397,462
March	297,704	333,644	398,926
April	331,975	346,590	413,775
May	268,014	348,894	378,555
June	341,985	375,329	339,420
July	430,550	406,000	405,700
August	346,406	329,949	356,360
September	364,257	335,566	
October	340,039	377,404	
November	265,431	327,367	
December	317,469	262,129	

Median Price

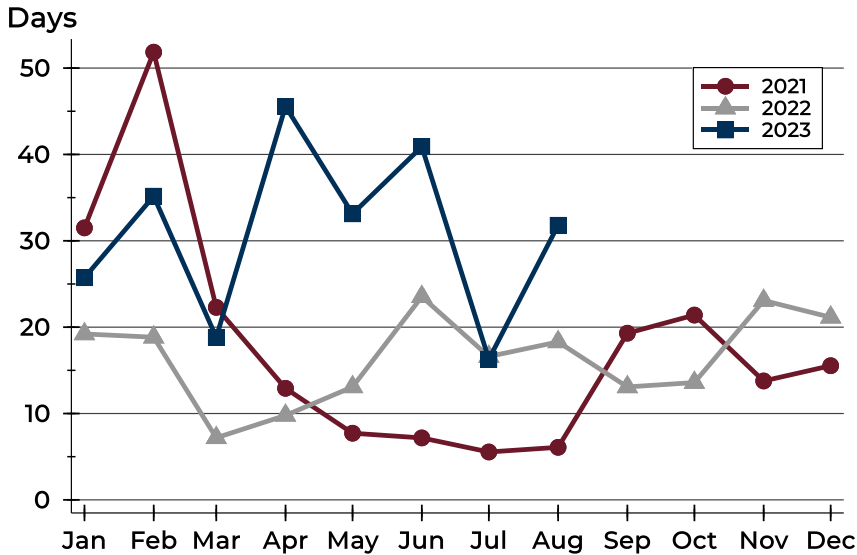


Month	2021	2022	2023
January	284,700	329,500	289,900
February	210,000	267,450	269,500
March	236,750	257,400	354,900
April	289,450	350,000	417,450
May	240,000	306,500	352,450
June	280,000	325,000	307,250
July	304,500	432,450	363,700
August	265,000	279,900	305,000
September	312,400	320,000	
October	299,900	298,900	
November	259,000	295,500	
December	279,900	266,000	



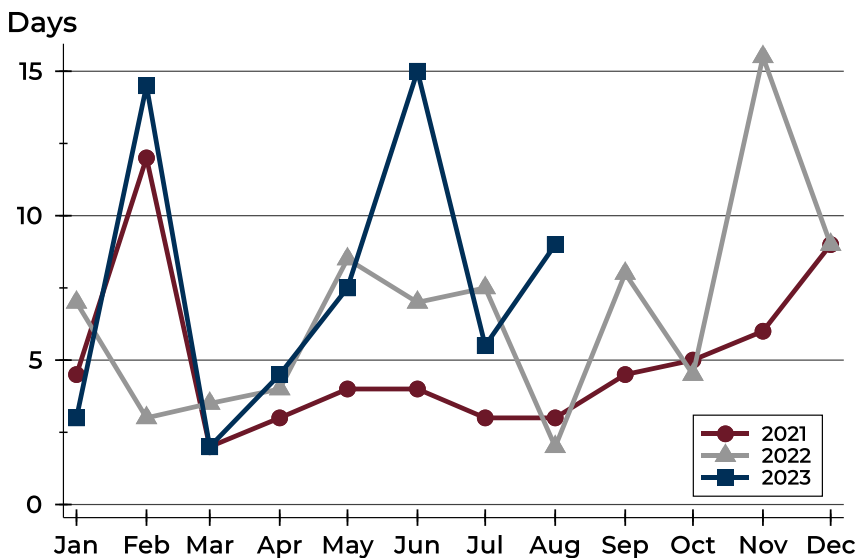
Douglas County (Excluding Lawrence) Contracts Written Analysis

Average DOM



Month	2021	2022	2023
January	32	19	26
February	52	19	35
March	22	7	19
April	13	10	46
May	8	13	33
June	7	24	41
July	6	17	16
August	6	18	32
September	19	13	
October	21	14	
November	14	23	
December	16	21	

Median DOM



Month	2021	2022	2023
January	5	7	3
February	12	3	15
March	2	4	2
April	3	4	5
May	4	9	8
June	4	7	15
July	3	8	6
August	3	2	9
September	5	8	
October	5	5	
November	6	16	
December	9	9	



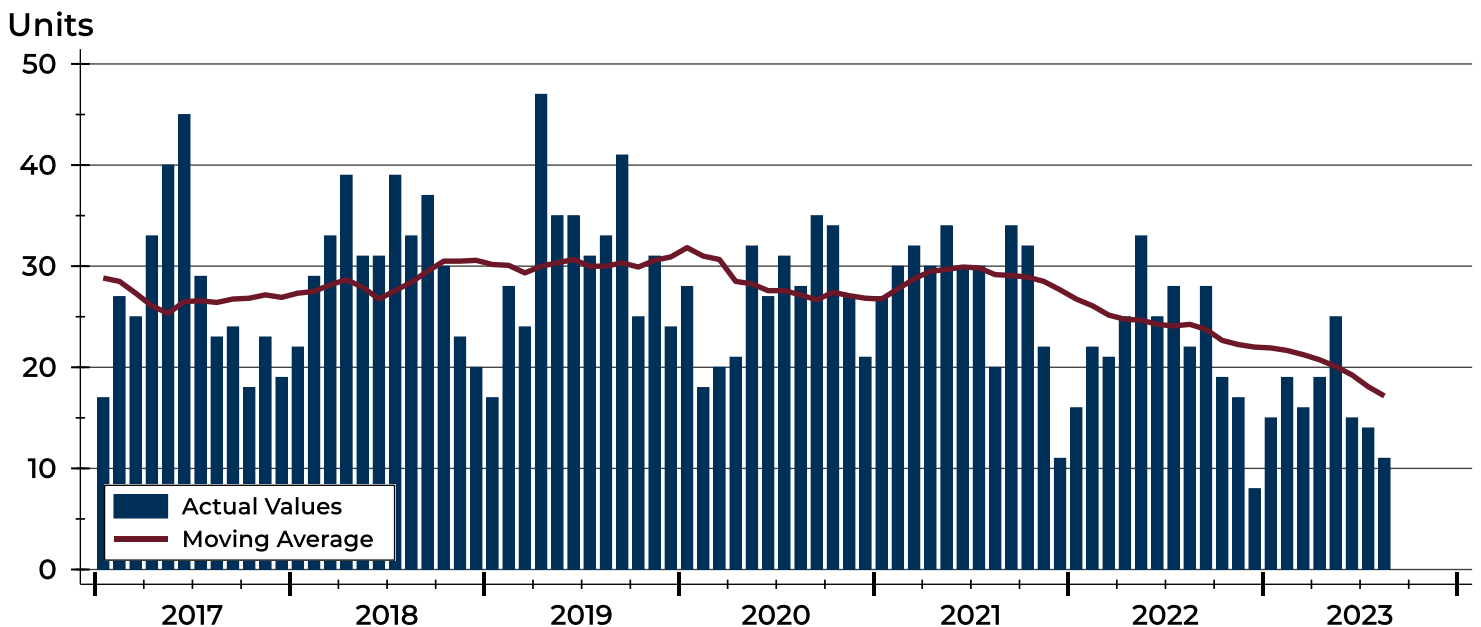
Douglas County (Excluding Lawrence) Pending Contracts Analysis

Summary Statistics for Pending Contracts		2023	End of August 2022	Change
Pending Contracts		11	22	-50.0%
Volume (1,000s)		4,423	8,485	-47.9%
Average	List Price	402,100	385,661	4.3%
	Days on Market	29	38	-23.7%
	Percent of Original	98.2%	98.4%	-0.2%
Median	List Price	325,000	395,000	-17.7%
	Days on Market	9	9	0.0%
	Percent of Original	100.0%	100.0%	0.0%

A total of 11 listings in Douglas County had contracts pending at the end of August, down from 22 contracts pending at the end of August 2022.

Pending contracts reflect listings with a contract in place at the end of the month. In contrast, contracts written measures the number of listings put under contract during the month.

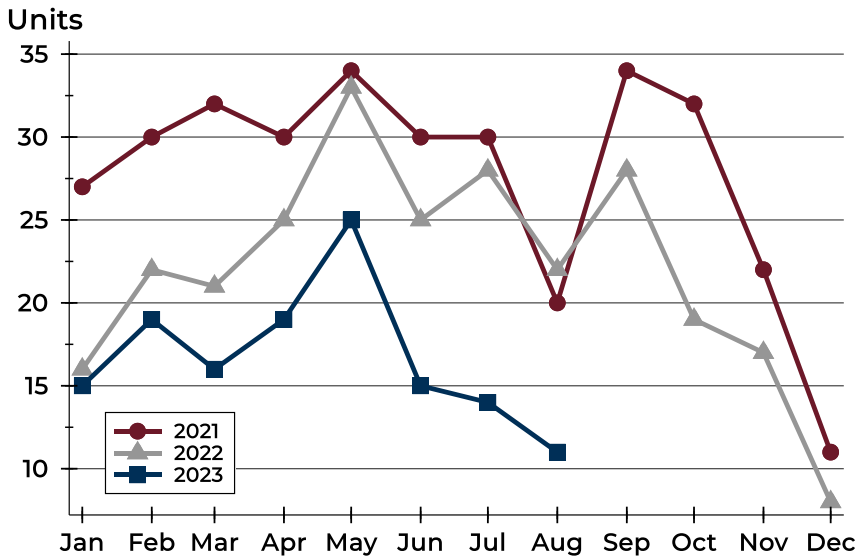
History of Pending Contracts





Douglas County (Excluding Lawrence) Pending Contracts Analysis

Pending Contracts by Month



Month	2021	2022	2023
January	27	16	15
February	30	22	19
March	32	21	16
April	30	25	19
May	34	33	25
June	30	25	15
July	30	28	14
August	20	22	11
September	34	28	
October	32	19	
November	22	17	
December	11	8	

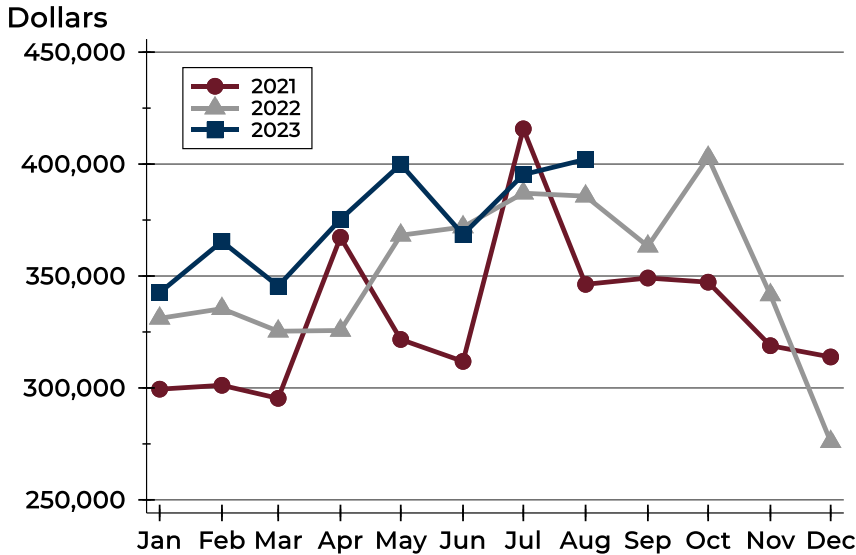
Pending Contracts by Price Range

Price Range	Pending Contracts		List Price		Days on Market		Price as % of Orig.	
	Number	Percent	Average	Median	Avg.	Med.	Avg.	Med.
Below \$50,000	0	0.0%	N/A	N/A	N/A	N/A	N/A	N/A
\$50,000-\$99,999	0	0.0%	N/A	N/A	N/A	N/A	N/A	N/A
\$100,000-\$149,999	1	9.1%	124,000	124,000	9	9	100.0%	100.0%
\$150,000-\$199,999	0	0.0%	N/A	N/A	N/A	N/A	N/A	N/A
\$200,000-\$249,999	3	27.3%	221,433	229,900	9	11	100.0%	100.0%
\$250,000-\$299,999	0	0.0%	N/A	N/A	N/A	N/A	N/A	N/A
\$300,000-\$349,999	3	27.3%	333,300	325,000	45	1	97.8%	100.0%
\$350,000-\$399,999	0	0.0%	N/A	N/A	N/A	N/A	N/A	N/A
\$400,000-\$449,999	0	0.0%	N/A	N/A	N/A	N/A	N/A	N/A
\$450,000-\$499,999	1	9.1%	495,000	495,000	90	90	94.3%	94.3%
\$500,000-\$599,999	0	0.0%	N/A	N/A	N/A	N/A	N/A	N/A
\$600,000-\$749,999	3	27.3%	713,300	725,000	21	7	97.5%	100.0%
\$750,000-\$999,999	0	0.0%	N/A	N/A	N/A	N/A	N/A	N/A
\$1,000,000 and up	0	0.0%	N/A	N/A	N/A	N/A	N/A	N/A



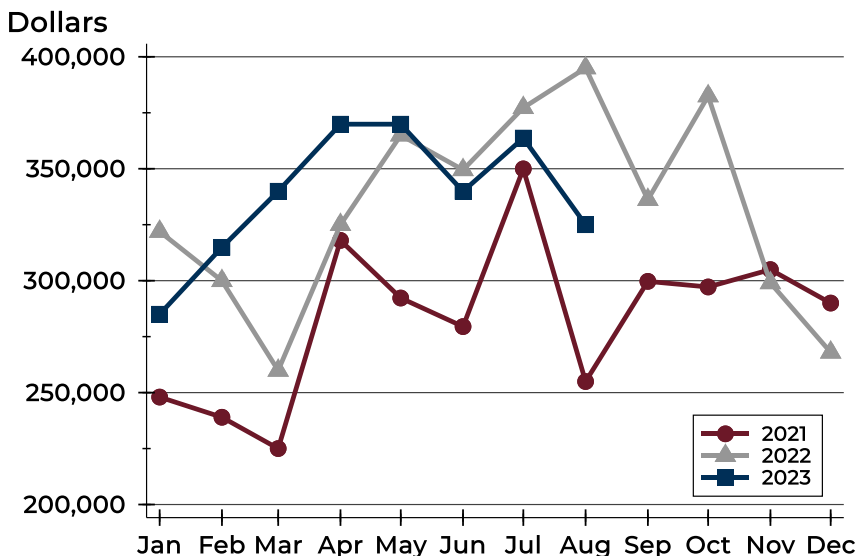
Douglas County (Excluding Lawrence) Pending Contracts Analysis

Average Price



Month	2021	2022	2023
January	299,446	331,106	342,573
February	301,182	335,409	365,442
March	295,359	325,338	345,506
April	367,297	325,680	375,321
May	321,660	368,205	399,913
June	311,863	371,892	368,533
July	415,745	387,004	395,307
August	346,287	385,661	402,100
September	349,103	363,319	
October	347,239	402,934	
November	318,870	341,553	
December	313,845	275,988	

Median Price

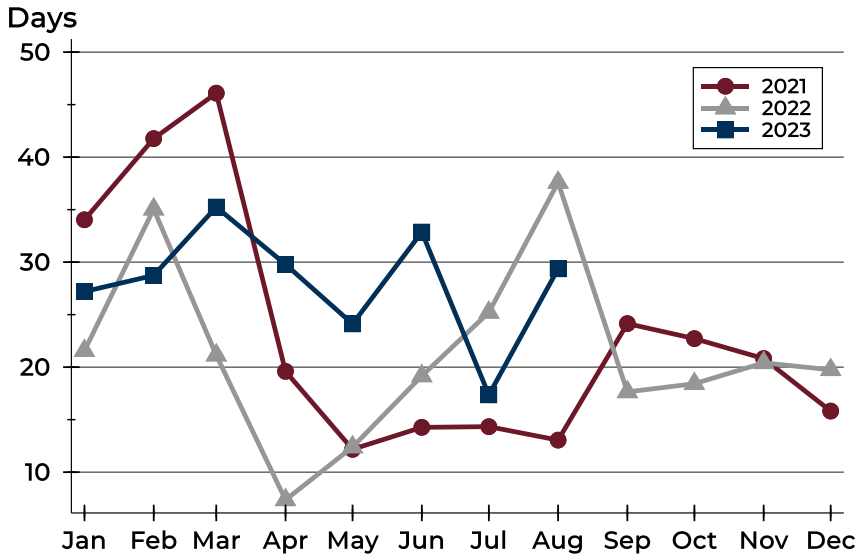


Month	2021	2022	2023
January	248,000	321,950	285,000
February	239,000	299,950	314,900
March	225,000	259,900	339,950
April	318,000	325,000	369,900
May	292,250	365,000	369,900
June	279,500	349,500	339,900
July	349,950	377,250	363,700
August	254,950	395,000	325,000
September	299,700	336,200	
October	297,200	382,500	
November	304,950	299,000	
December	290,000	268,000	



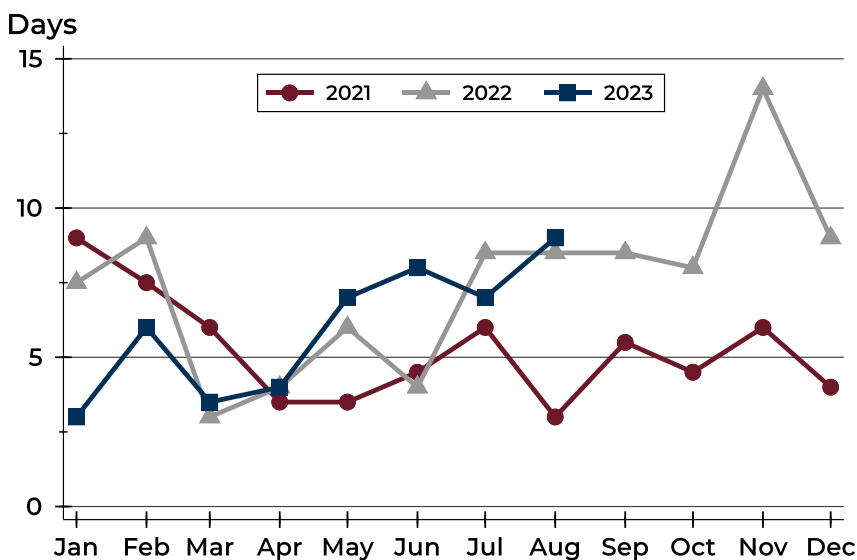
Douglas County (Excluding Lawrence) Pending Contracts Analysis

Average DOM



Month	2021	2022	2023
January	34	22	27
February	42	35	29
March	46	21	35
April	20	7	30
May	12	12	24
June	14	19	33
July	14	25	17
August	13	38	29
September	24	18	
October	23	18	
November	21	20	
December	16	20	

Median DOM



Month	2021	2022	2023
January	9	8	3
February	8	9	6
March	6	3	4
April	4	4	4
May	4	6	7
June	5	4	8
July	6	9	7
August	3	9	9
September	6	9	
October	5	8	
November	6	14	
December	4	9	