



**March
2022**

Lawrence MLS Statistics



LAWRENCE
Board of REALTORS®

Douglas County (Excluding Lawrence) Housing Report



Market Overview

Douglas County Home Sales Fell in March

Total home sales in Douglas County fell last month to 16 units, compared to 17 units in March 2021. Total sales volume was \$4.7 million, down from a year earlier.

The median sale price in March was \$267,350, up from \$240,000 a year earlier. Homes that sold in March were typically on the market for 5 days and sold for 100.0% of their list prices.

Douglas County Active Listings Up at End of March

The total number of active listings in Douglas County at the end of March was 27 units, up from 16 at the same point in 2021. This represents a 1.3 months' supply of homes available for sale. The median list price of homes on the market at the end of March was \$420,000.

During March, a total of 15 contracts were written down from 24 in March 2021. At the end of the month, there were 21 contracts still pending.

Report Contents

- Summary Statistics – Page 2
- Closed Listing Analysis – Page 3
- Active Listings Analysis – Page 7
- Months' Supply Analysis – Page 11
- New Listings Analysis – Page 12
- Contracts Written Analysis – Page 15
- Pending Contracts Analysis – Page 19

Contact Information

Rob Hulse, Executive Vice-President
 Lawrence Board of REALTORS®
 3838 W. 6th Street (at Monterey)
 Lawrence, KS 66049
 685-842-1843
Rob@LawrenceRealtor.com
www.LawrenceRealtor.com



**March
2022**

Lawrence MLS Statistics



LAWRENCE
Board of REALTORS®

Douglas County (Excluding Lawrence) Summary Statistics

March MLS Statistics Three-year History		Current Month			Year-to-Date		
		2022	2021	2020	2022	2021	2020
Home Sales		16	17	17	36	43	56
Change from prior year		-5.9%	0.0%	-10.5%	-16.3%	-23.2%	24.4%
Active Listings		27	16	44	N/A	N/A	N/A
Change from prior year		68.8%	-63.6%	-29.0%			
Months' Supply		1.3	0.8	1.8	N/A	N/A	N/A
Change from prior year		62.5%	-55.6%	-35.7%			
New Listings		28	21	23	54	52	65
Change from prior year		33.3%	-8.7%	-45.2%	3.8%	-20.0%	-18.8%
Contracts Written		15	24	19	41	57	53
Change from prior year		-37.5%	26.3%	-17.4%	-28.1%	7.5%	-1.9%
Pending Contracts		21	32	20	N/A	N/A	N/A
Change from prior year		-34.4%	60.0%	-16.7%			
Sales Volume (1,000s)		4,677	4,991	4,126	12,680	12,796	14,431
Change from prior year		-6.3%	21.0%	-22.3%	-0.9%	-11.3%	25.5%
Average	Sale Price	292,338	293,600	242,712	352,235	297,579	257,694
	Change from prior year	-0.4%	21.0%	-13.2%	18.4%	15.5%	0.9%
	List Price of Actives	464,954	395,581	506,364	N/A	N/A	N/A
	Change from prior year	17.5%	-21.9%	47.2%			
	Days on Market	10	36	35	14	32	43
Change from prior year	-72.2%	2.9%	-31.4%	-56.3%	-25.6%	-23.2%	
	Percent of List	99.9%	97.6%	99.0%	101.6%	98.0%	98.3%
Change from prior year	2.4%	-1.4%	0.9%	3.7%	-0.3%	0.2%	
	Percent of Original	99.2%	96.4%	98.3%	101.4%	96.7%	97.1%
Change from prior year	2.9%	-1.9%	1.2%	4.9%	-0.4%	0.7%	
Median	Sale Price	267,350	240,000	255,000	313,450	280,000	238,500
	Change from prior year	11.4%	-5.9%	1.0%	11.9%	17.4%	3.7%
	List Price of Actives	420,000	319,500	397,400	N/A	N/A	N/A
	Change from prior year	31.5%	-19.6%	37.2%			
	Days on Market	5	10	8	5	10	11
Change from prior year	-50.0%	25.0%	-74.2%	-50.0%	-9.1%	-64.5%	
	Percent of List	100.0%	99.2%	100.0%	100.0%	99.2%	100.0%
Change from prior year	0.8%	-0.8%	1.2%	0.8%	-0.8%	0.8%	
	Percent of Original	100.0%	99.2%	100.0%	100.0%	98.7%	98.8%
Change from prior year	0.8%	-0.8%	1.9%	1.3%	-0.1%	0.8%	

Note: Year-to-date statistics cannot be calculated for Active Listings, Months' Supply and Pending Contracts.



Douglas County (Excluding Lawrence) Closed Listings Analysis

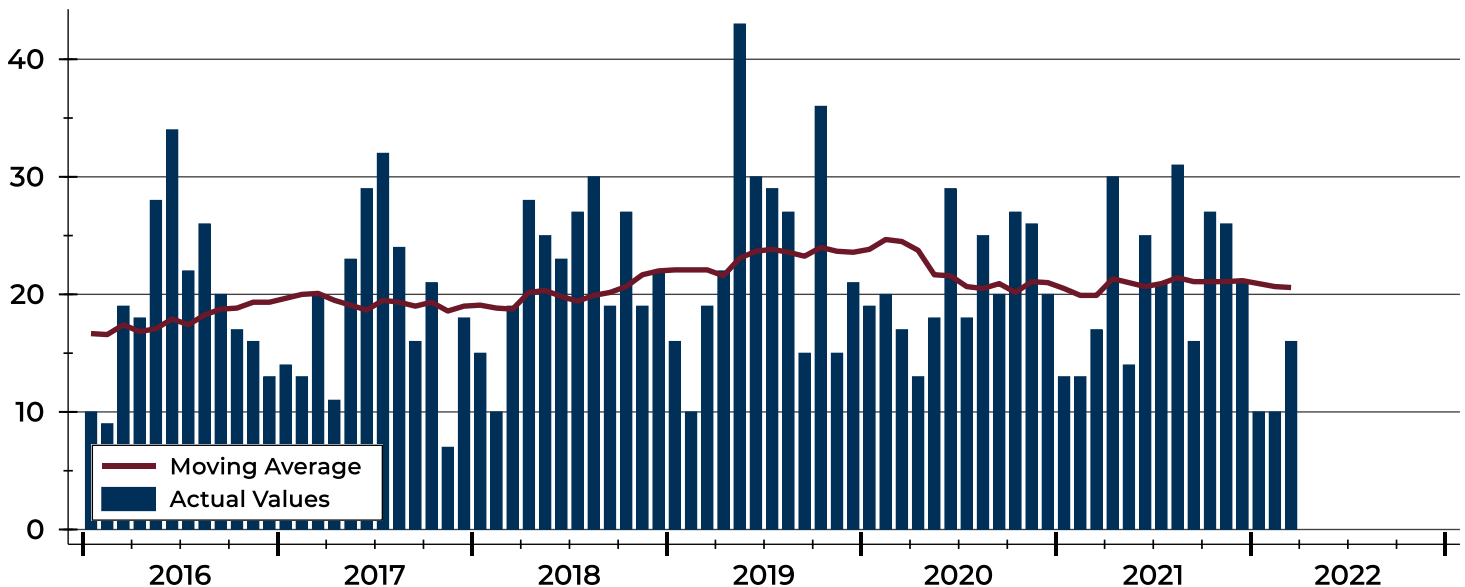
Summary Statistics for Closed Listings		2022	March 2021	Change	2022	Year-to-Date 2021	Change
Closed Listings		16	17	-5.9%	36	43	-16.3%
Volume (1,000s)		4,677	4,991	-6.3%	12,680	12,796	-0.9%
Months' Supply		1.3	0.8	62.5%	N/A	N/A	N/A
Average	Sale Price	292,338	293,600	-0.4%	352,235	297,579	18.4%
	Days on Market	10	36	-72.2%	14	32	-56.3%
	Percent of List	99.9%	97.6%	2.4%	101.6%	98.0%	3.7%
	Percent of Original	99.2%	96.4%	2.9%	101.4%	96.7%	4.9%
Median	Sale Price	267,350	240,000	11.4%	313,450	280,000	11.9%
	Days on Market	5	10	-50.0%	5	10	-50.0%
	Percent of List	100.0%	99.2%	0.8%	100.0%	99.2%	0.8%
	Percent of Original	100.0%	99.2%	0.8%	100.0%	98.7%	1.3%

A total of 16 homes sold in Douglas County in March, down from 17 units in March 2021. Total sales volume fell to \$4.7 million compared to \$5.0 million in the previous year.

The median sales price in March was \$267,350, up 11.4% compared to the prior year. Median days on market was 5 days, down from 6 days in February, and down from 10 in March 2021.

History of Closed Listings

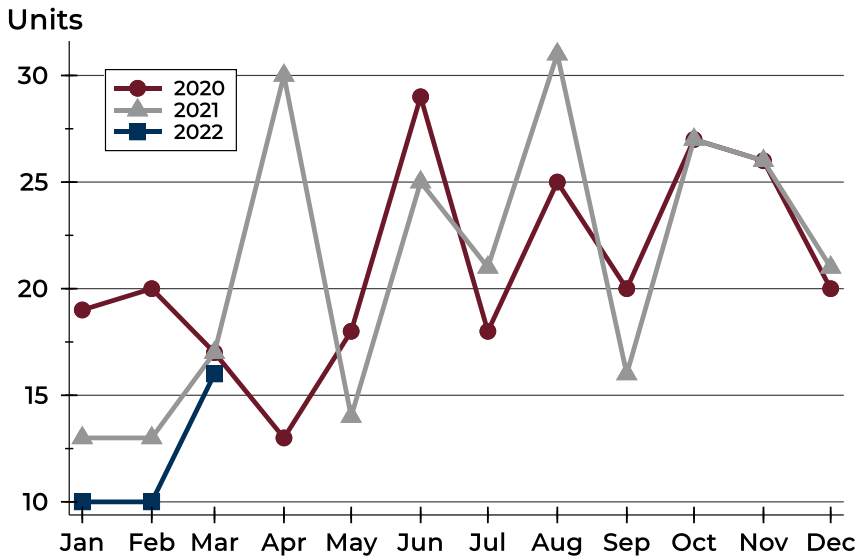
Units





Douglas County (Excluding Lawrence) Closed Listings Analysis

Closed Listings by Month



Month	2020	2021	2022
January	19	13	10
February	20	13	10
March	17	17	16
April	13	30	13
May	18	14	14
June	29	25	25
July	18	21	21
August	25	31	31
September	20	16	16
October	27	27	27
November	26	26	26
December	20	21	21

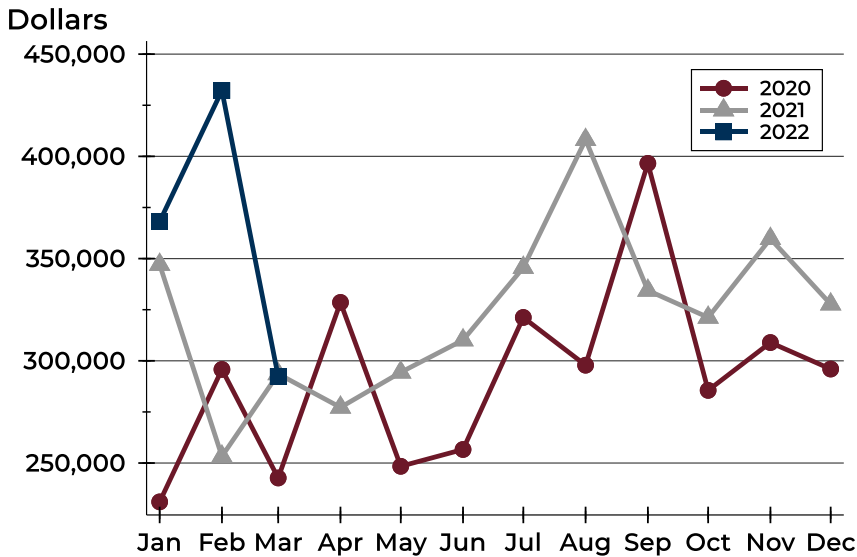
Closed Listings by Price Range

Price Range	Sales		Months' Supply	Sale Price		Days on Market		Price as % of List		Price as % of Orig.	
	Number	Percent		Average	Median	Avg.	Med.	Avg.	Med.	Avg.	Med.
Below \$50,000	0	0.0%	N/A	N/A	N/A	N/A	N/A	N/A	N/A	N/A	N/A
\$50,000-\$99,999	0	0.0%	N/A	N/A	N/A	N/A	N/A	N/A	N/A	N/A	N/A
\$100,000-\$149,999	1	6.3%	2.6	130,000	130,000	0	0	100.0%	100.0%	100.0%	100.0%
\$150,000-\$199,999	2	12.5%	0.4	172,000	172,000	5	5	98.2%	98.2%	98.2%	98.2%
\$200,000-\$249,999	3	18.8%	0.5	231,633	230,000	9	1	100.8%	102.2%	100.8%	102.2%
\$250,000-\$299,999	4	25.0%	0.3	268,900	267,350	10	11	101.5%	101.7%	101.5%	101.7%
\$300,000-\$349,999	1	6.3%	1.2	316,900	316,900	58	58	100.6%	100.6%	97.5%	97.5%
\$350,000-\$399,999	3	18.8%	1.9	380,000	395,000	8	3	97.7%	100.0%	97.7%	100.0%
\$400,000-\$449,999	1	6.3%	1.4	445,000	445,000	1	1	93.7%	93.7%	86.4%	86.4%
\$450,000-\$499,999	0	0.0%	N/A	N/A	N/A	N/A	N/A	N/A	N/A	N/A	N/A
\$500,000-\$599,999	1	6.3%	2.4	531,000	531,000	4	4	106.2%	106.2%	106.2%	106.2%
\$600,000-\$749,999	0	0.0%	N/A	N/A	N/A	N/A	N/A	N/A	N/A	N/A	N/A
\$750,000-\$999,999	0	0.0%	N/A	N/A	N/A	N/A	N/A	N/A	N/A	N/A	N/A
\$1,000,000 and up	0	0.0%	N/A	N/A	N/A	N/A	N/A	N/A	N/A	N/A	N/A



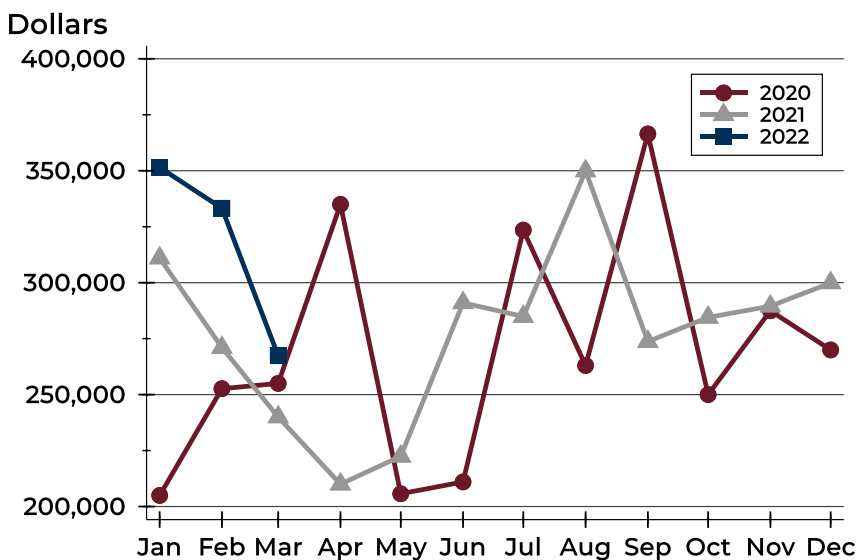
Douglas County (Excluding Lawrence) Closed Listings Analysis

Average Price



Month	2020	2021	2022
January	231,008	347,077	368,105
February	295,780	253,285	432,200
March	242,712	293,600	292,338
April	328,567	277,227	
May	248,419	294,379	
June	256,636	310,146	
July	321,206	345,614	
August	297,868	408,148	
September	396,585	334,425	
October	285,556	321,227	
November	308,939	359,738	
December	295,990	327,702	

Median Price

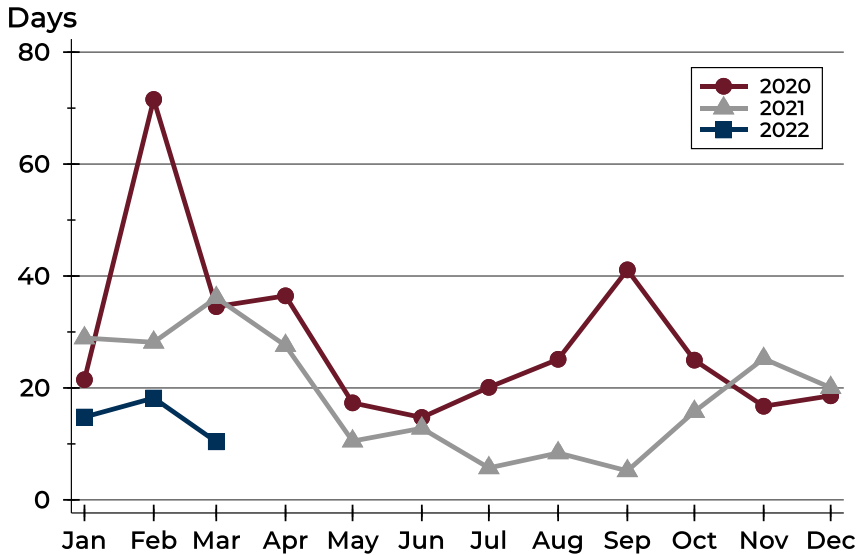


Month	2020	2021	2022
January	204,950	311,000	351,500
February	252,650	271,000	333,250
March	255,000	240,000	267,350
April	335,000	210,000	
May	205,700	222,450	
June	211,000	291,000	
July	323,500	284,900	
August	263,000	349,900	
September	366,450	273,700	
October	250,000	284,500	
November	287,450	289,500	
December	269,950	299,900	



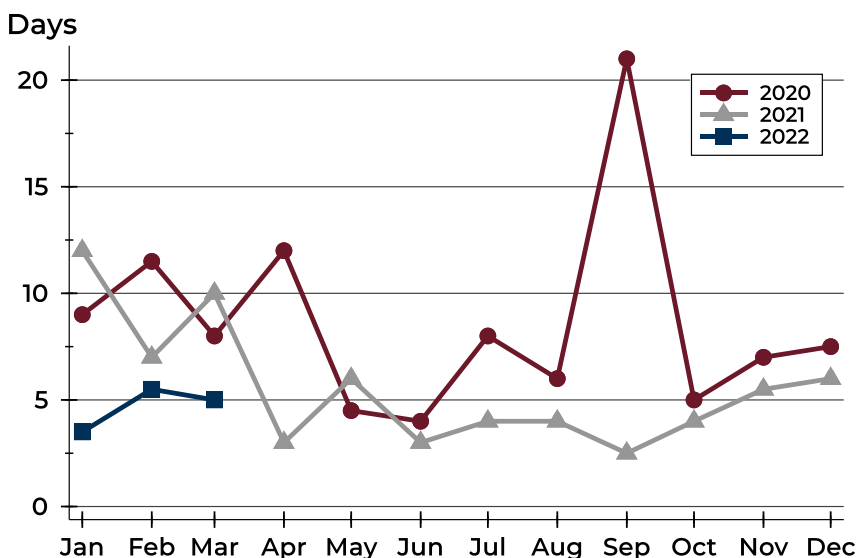
Douglas County (Excluding Lawrence) Closed Listings Analysis

Average DOM



Month	2020	2021	2022
January	21	29	15
February	72	28	18
March	35	36	10
April	36	28	
May	17	11	
June	15	13	
July	20	6	
August	25	8	
September	41	5	
October	25	16	
November	17	25	
December	19	20	

Median DOM



Month	2020	2021	2022
January	9	12	4
February	12	7	6
March	8	10	5
April	12	3	
May	5	6	
June	4	3	
July	8	4	
August	6	4	
September	21	3	
October	5	4	
November	7	6	
December	8	6	



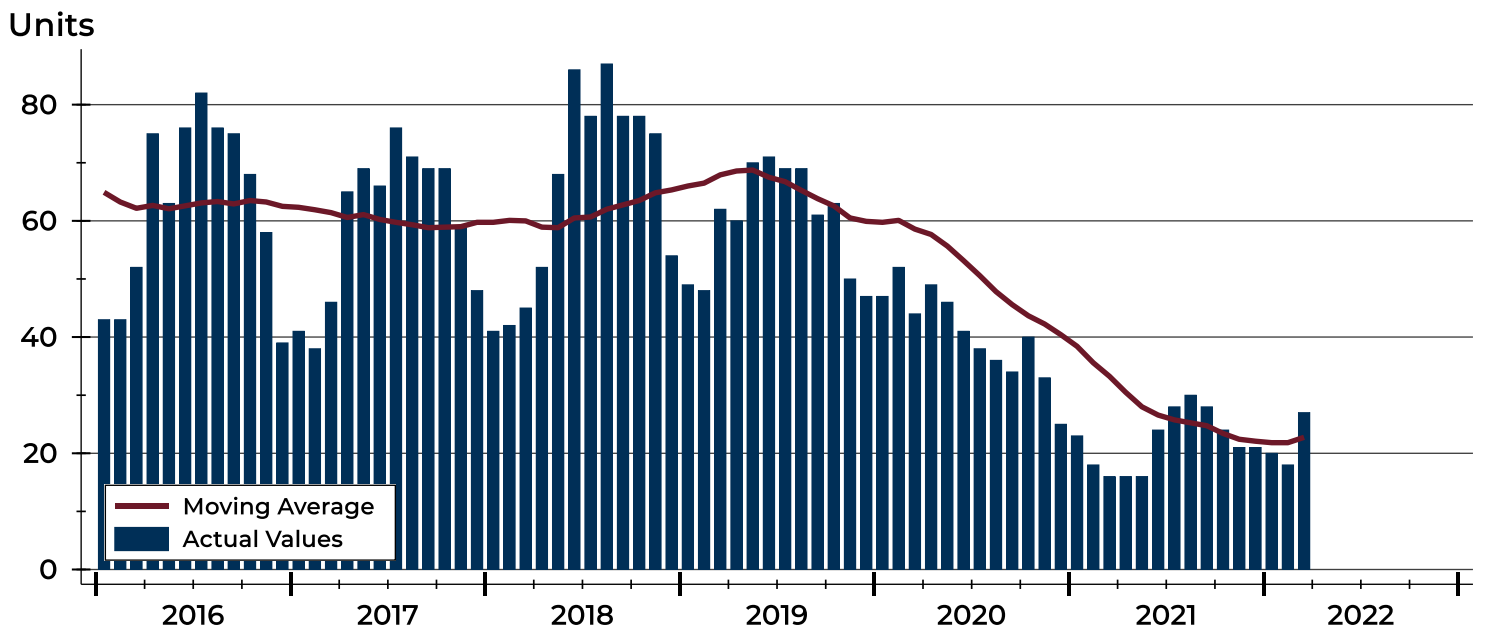
Douglas County (Excluding Lawrence) Active Listings Analysis

Summary Statistics for Active Listings		2022	End of March 2021	Change
Active Listings		27	16	68.8%
Volume (1,000s)		12,554	6,329	98.4%
Months' Supply		1.3	0.8	62.5%
Average	List Price	464,954	395,581	17.5%
	Days on Market	36	45	-20.0%
	Percent of Original	98.2%	98.9%	-0.7%
Median	List Price	420,000	319,500	31.5%
	Days on Market	16	14	14.3%
	Percent of Original	100.0%	100.0%	0.0%

A total of 27 homes were available for sale in Douglas County at the end of March. This represents a 1.3 months' supply of active listings.

The median list price of homes on the market at the end of March was \$420,000, up 31.5% from 2021. The typical time on market for active listings was 16 days, up from 14 days a year earlier.

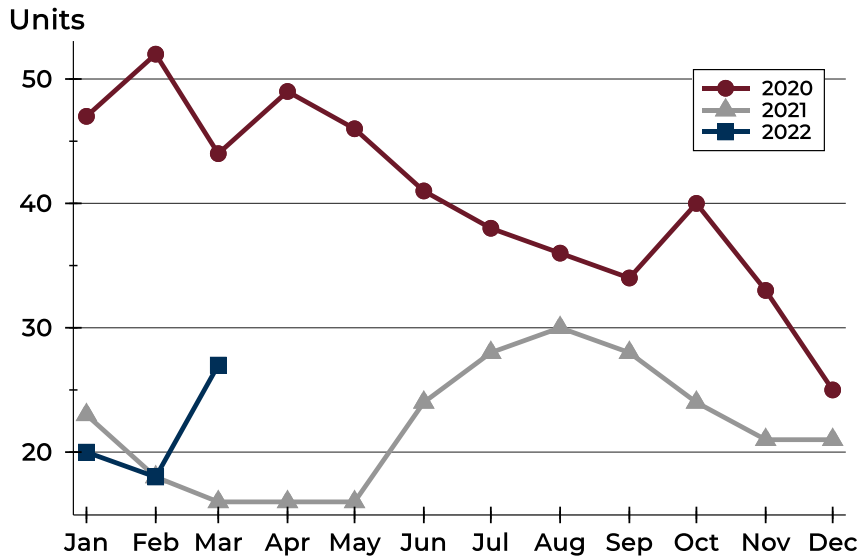
History of Active Listings





Douglas County (Excluding Lawrence) Active Listings Analysis

Active Listings by Month



Month	2020	2021	2022
January	47	23	20
February	52	18	18
March	44	16	27
April	49	16	
May	46	16	
June	41	24	
July	38	28	
August	36	30	
September	34	28	
October	40	24	
November	33	21	
December	25	21	

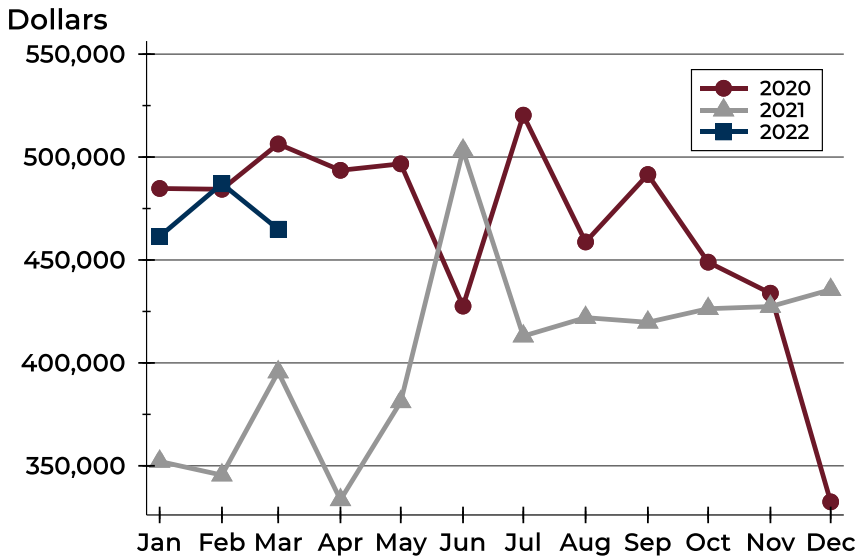
Active Listings by Price Range

Price Range	Active Listings		Months' Supply	List Price		Days on Market		Price as % of Orig.	
	Number	Percent		Average	Median	Avg.	Med.	Avg.	Med.
Below \$50,000	0	0.0%	N/A	N/A	N/A	N/A	N/A	N/A	N/A
\$50,000-\$99,999	0	0.0%	N/A	N/A	N/A	N/A	N/A	N/A	N/A
\$100,000-\$149,999	3	11.1%	2.6	123,317	125,000	20	11	91.4%	100.0%
\$150,000-\$199,999	1	3.7%	0.4	185,000	185,000	4	4	100.0%	100.0%
\$200,000-\$249,999	2	7.4%	0.5	224,950	224,950	20	20	100.0%	100.0%
\$250,000-\$299,999	1	3.7%	0.3	288,500	288,500	6	6	100.0%	100.0%
\$300,000-\$349,999	3	11.1%	1.2	331,333	325,000	17	11	95.3%	94.6%
\$350,000-\$399,999	3	11.1%	1.9	375,933	375,000	32	18	99.5%	100.0%
\$400,000-\$449,999	2	7.4%	1.4	422,450	422,450	69	69	96.7%	96.7%
\$450,000-\$499,999	2	7.4%	N/A	484,450	484,450	5	5	100.0%	100.0%
\$500,000-\$599,999	3	11.1%	2.4	525,000	515,000	42	21	99.4%	100.0%
\$600,000-\$749,999	3	11.1%	N/A	653,267	649,900	58	16	100.0%	100.0%
\$750,000-\$999,999	3	11.1%	N/A	880,000	895,000	56	35	100.2%	100.0%
\$1,000,000 and up	1	3.7%	N/A	1,150,000	1,150,000	108	108	100.0%	100.0%



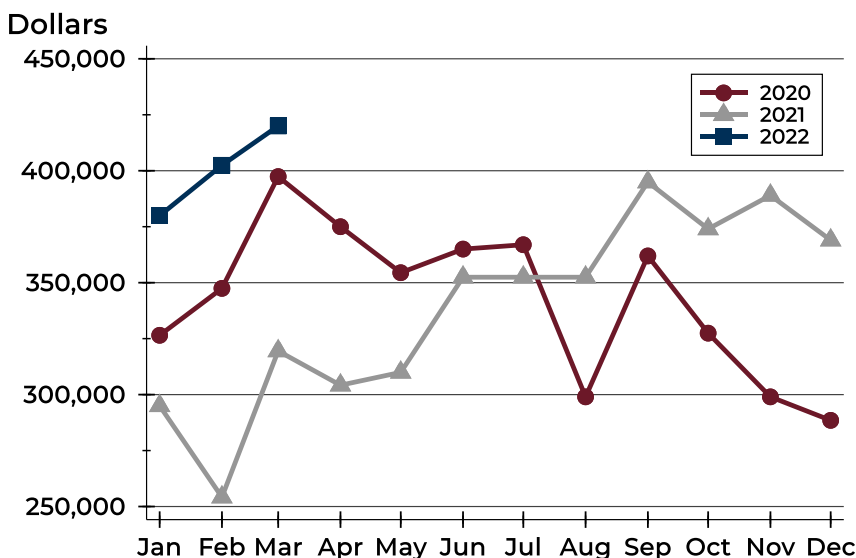
Douglas County (Excluding Lawrence) Active Listings Analysis

Average Price



Month	2020	2021	2022
January	484,747	352,137	461,451
February	484,360	345,489	487,044
March	506,364	395,581	464,954
April	493,571	333,478	
May	496,717	381,094	
June	427,603	503,244	
July	520,358	413,024	
August	458,750	421,996	
September	491,534	419,736	
October	448,944	426,332	
November	433,868	427,369	
December	332,488	435,574	

Median Price

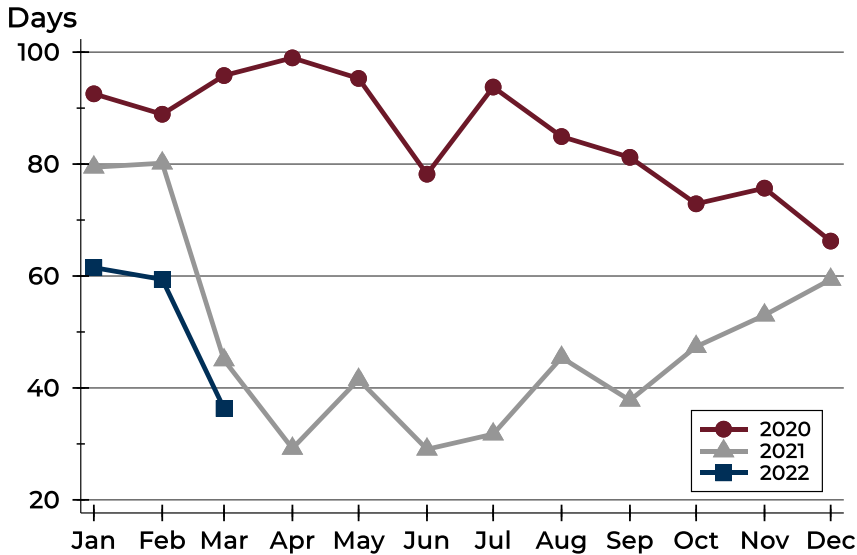


Month	2020	2021	2022
January	326,500	295,000	379,950
February	347,450	254,200	402,450
March	397,400	319,500	420,000
April	375,000	304,200	
May	354,450	309,950	
June	365,000	352,450	
July	366,950	352,450	
August	299,000	352,450	
September	361,950	394,950	
October	327,450	374,000	
November	299,000	389,000	
December	288,500	369,000	



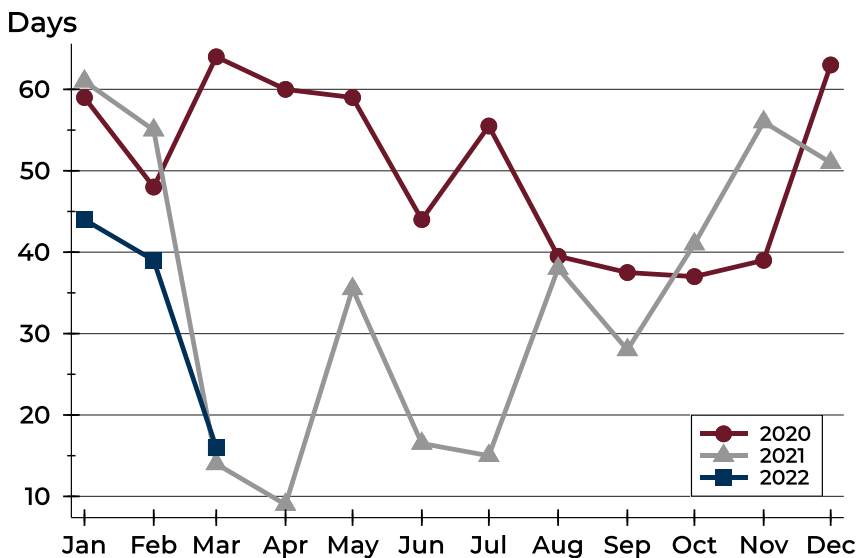
Douglas County (Excluding Lawrence) Active Listings Analysis

Average DOM



Month	2020	2021	2022
January	93	79	62
February	89	80	59
March	96	45	36
April	99	29	
May	95	42	
June	78	29	
July	94	32	
August	85	45	
September	81	38	
October	73	47	
November	76	53	
December	66	59	

Median DOM

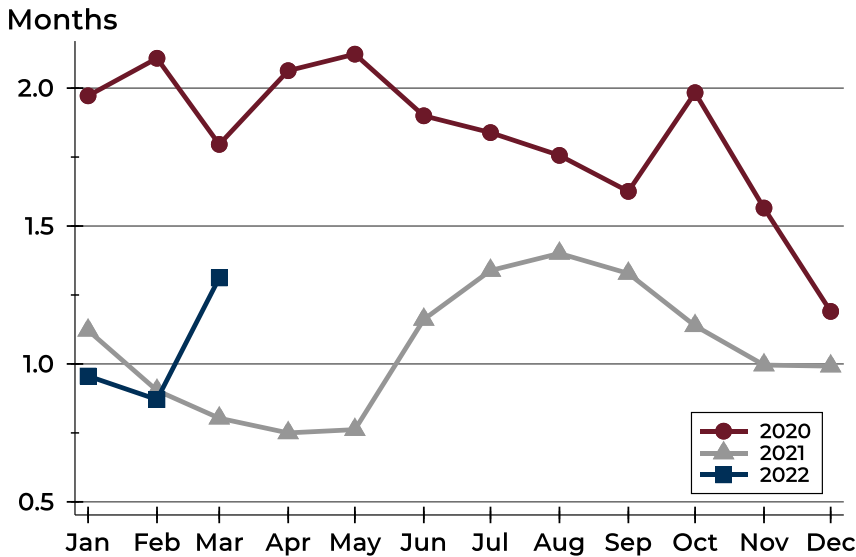


Month	2020	2021	2022
January	59	61	44
February	48	55	39
March	64	14	16
April	60	9	
May	59	36	
June	44	17	
July	56	15	
August	40	38	
September	38	28	
October	37	41	
November	39	56	
December	63	51	



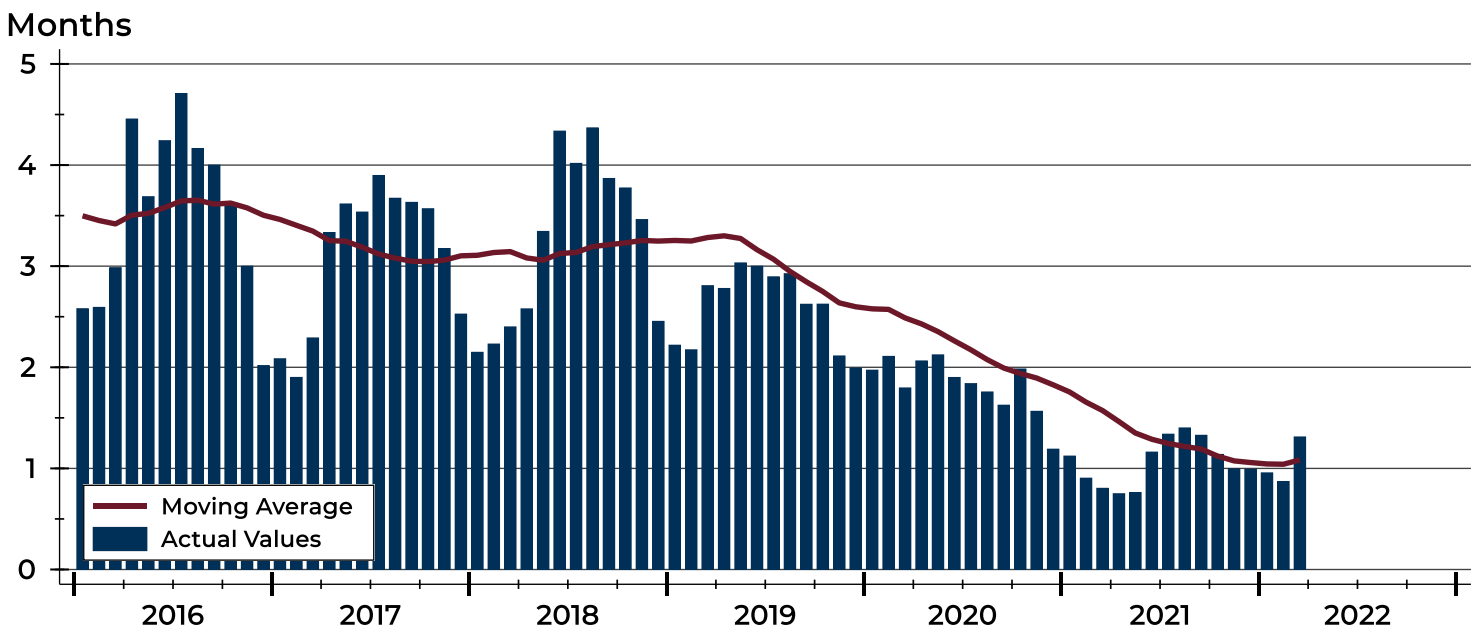
Douglas County (Excluding Lawrence) Months' Supply Analysis

Months' Supply by Month



Month	2020	2021	2022
January	2.0	1.1	1.0
February	2.1	0.9	0.9
March	1.8	0.8	1.3
April	2.1	0.8	
May	2.1	0.8	
June	1.9	1.2	
July	1.8	1.3	
August	1.8	1.4	
September	1.6	1.3	
October	2.0	1.1	
November	1.6	1.0	
December	1.2	1.0	

History of Month's Supply





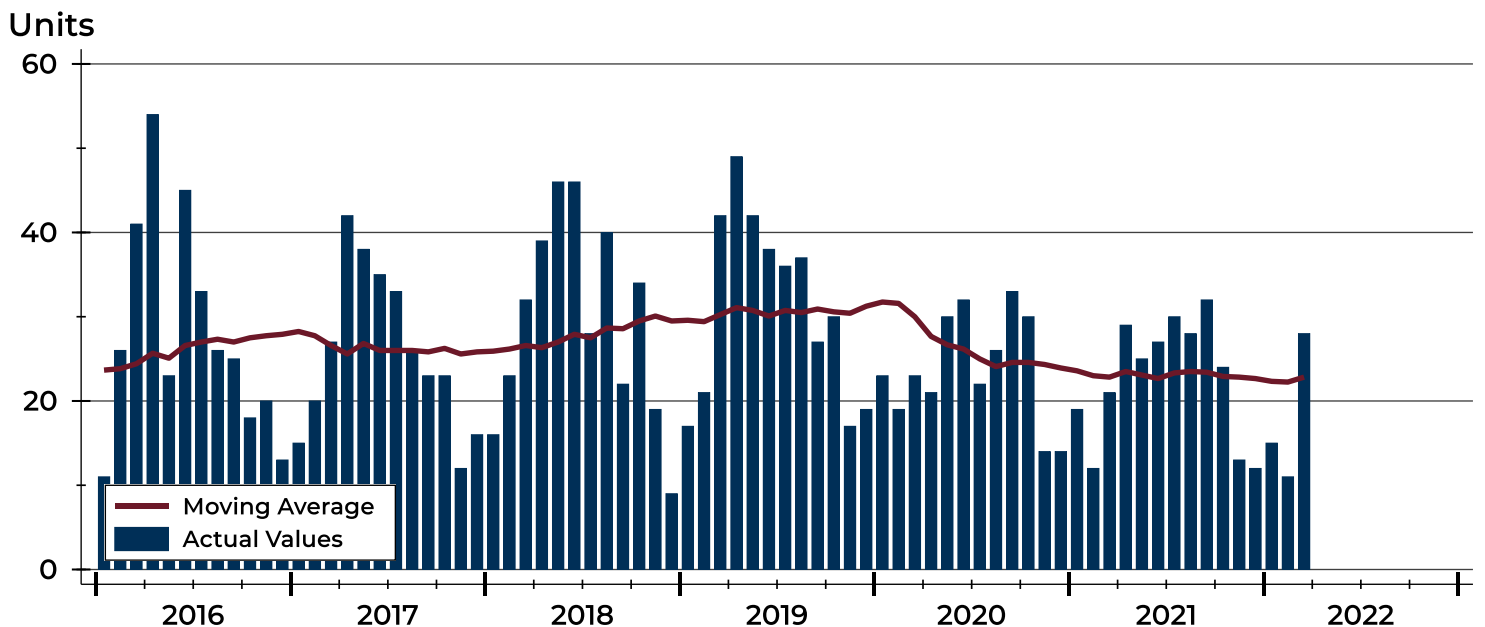
Douglas County (Excluding Lawrence) New Listings Analysis

Summary Statistics for New Listings		2022	March 2021	Change
Current Month	New Listings	28	21	33.3%
	Volume (1,000s)	9,218	6,955	32.5%
	Average List Price	329,218	331,185	-0.6%
	Median List Price	272,500	249,900	9.0%
Year-to-Date	New Listings	54	52	3.8%
	Volume (1,000s)	19,296	15,672	23.1%
	Average List Price	357,337	301,377	18.6%
	Median List Price	312,000	245,750	27.0%

A total of 28 new listings were added in Douglas County during March, up 33.3% from the same month in 2021. Year-to-date Douglas County has seen 54 new listings.

The median list price of these homes was \$272,500 up from \$249,900 in 2021.

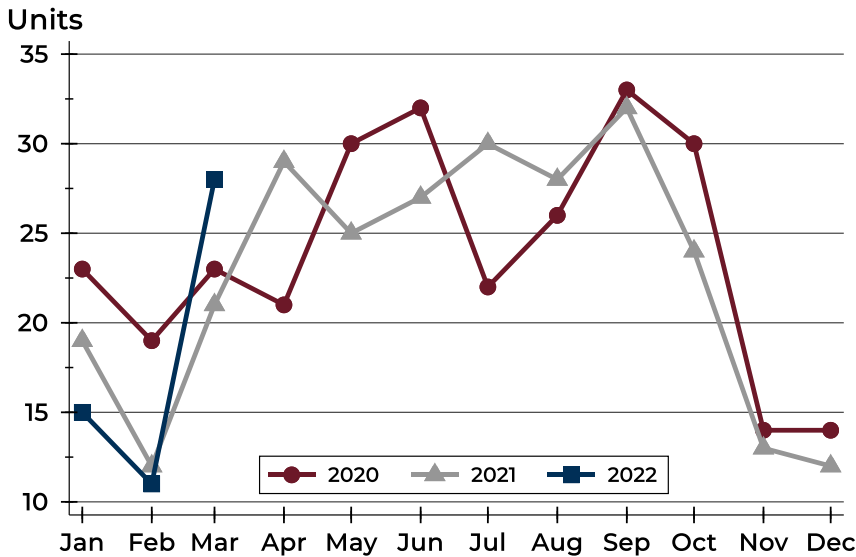
History of New Listings





Douglas County (Excluding Lawrence) New Listings Analysis

New Listings by Month



Month	2020	2021	2022
January	23	19	15
February	19	12	11
March	23	21	28
April	21	29	
May	30	25	
June	32	27	
July	22	30	
August	26	28	
September	33	32	
October	30	24	
November	14	13	
December	14	12	

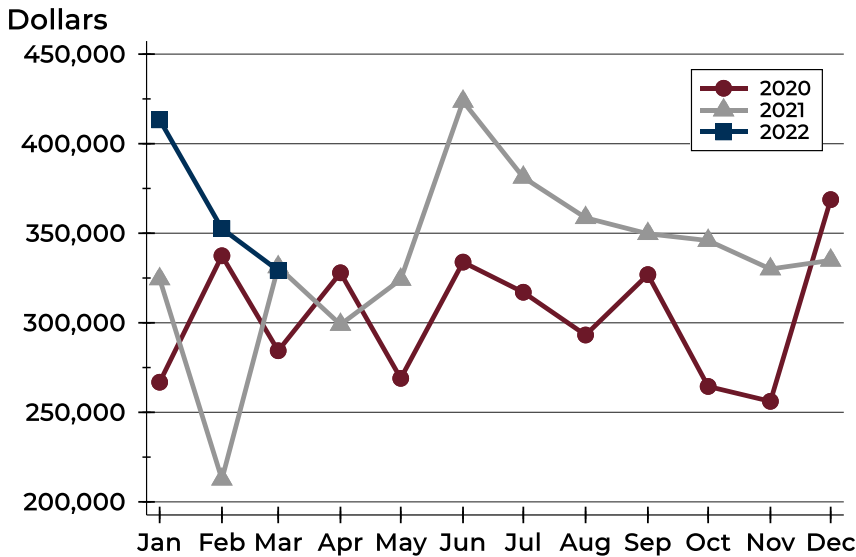
New Listings by Price Range

Price Range	New Listings		List Price		Days on Market		Price as % of Orig.	
	Number	Percent	Average	Median	Avg.	Med.	Avg.	Med.
Below \$50,000	0	0.0%	N/A	N/A	N/A	N/A	N/A	N/A
\$50,000-\$99,999	1	3.6%	99,000	99,000	15	15	56.6%	56.6%
\$100,000-\$149,999	2	7.1%	127,500	127,500	10	10	100.0%	100.0%
\$150,000-\$199,999	4	14.3%	181,225	180,000	6	5	100.0%	100.0%
\$200,000-\$249,999	4	14.3%	242,350	244,750	3	3	100.0%	100.0%
\$250,000-\$299,999	5	17.9%	271,760	270,000	7	5	98.1%	100.0%
\$300,000-\$349,999	1	3.6%	325,000	325,000	3	3	100.0%	100.0%
\$350,000-\$399,999	3	10.7%	380,800	379,500	17	20	100.9%	100.0%
\$400,000-\$449,999	2	7.1%	434,900	434,900	8	8	97.3%	97.3%
\$450,000-\$499,999	1	3.6%	499,000	499,000	9	9	100.0%	100.0%
\$500,000-\$599,999	3	10.7%	554,967	550,000	19	24	99.4%	100.0%
\$600,000-\$749,999	2	7.1%	654,950	654,950	15	15	100.0%	100.0%
\$750,000-\$999,999	0	0.0%	N/A	N/A	N/A	N/A	N/A	N/A
\$1,000,000 and up	0	0.0%	N/A	N/A	N/A	N/A	N/A	N/A



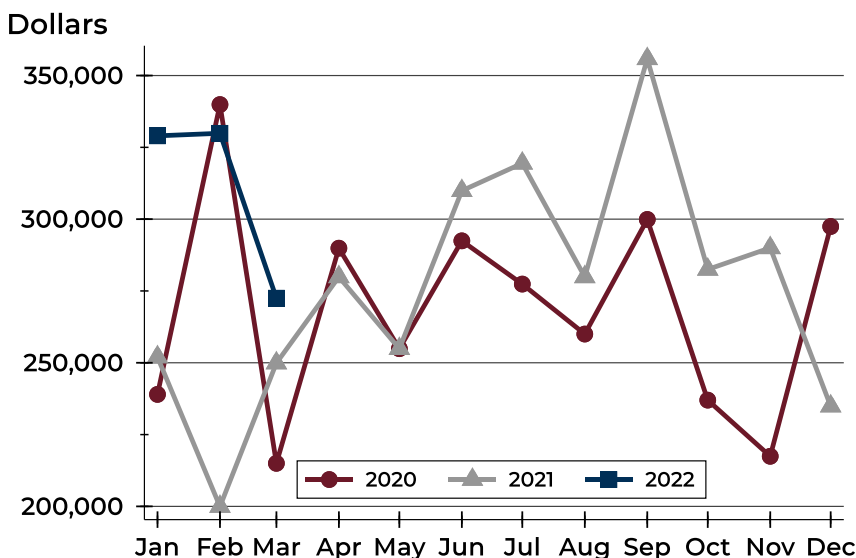
Douglas County (Excluding Lawrence) New Listings Analysis

Average Price



Month	2020	2021	2022
January	266,811	324,484	413,313
February	337,421	212,625	352,582
March	284,387	331,185	329,218
April	327,910	299,009	
May	268,967	324,190	
June	333,883	423,602	
July	317,055	381,211	
August	293,169	358,637	
September	326,898	349,719	
October	264,462	345,919	
November	256,132	330,035	
December	368,780	334,867	

Median Price



Month	2020	2021	2022
January	239,000	252,000	329,000
February	339,900	199,950	329,900
March	215,000	249,900	272,500
April	289,900	279,900	
May	254,900	254,900	
June	292,450	309,900	
July	277,400	319,450	
August	260,000	279,900	
September	299,900	355,825	
October	237,000	282,500	
November	217,450	290,000	
December	297,450	234,900	

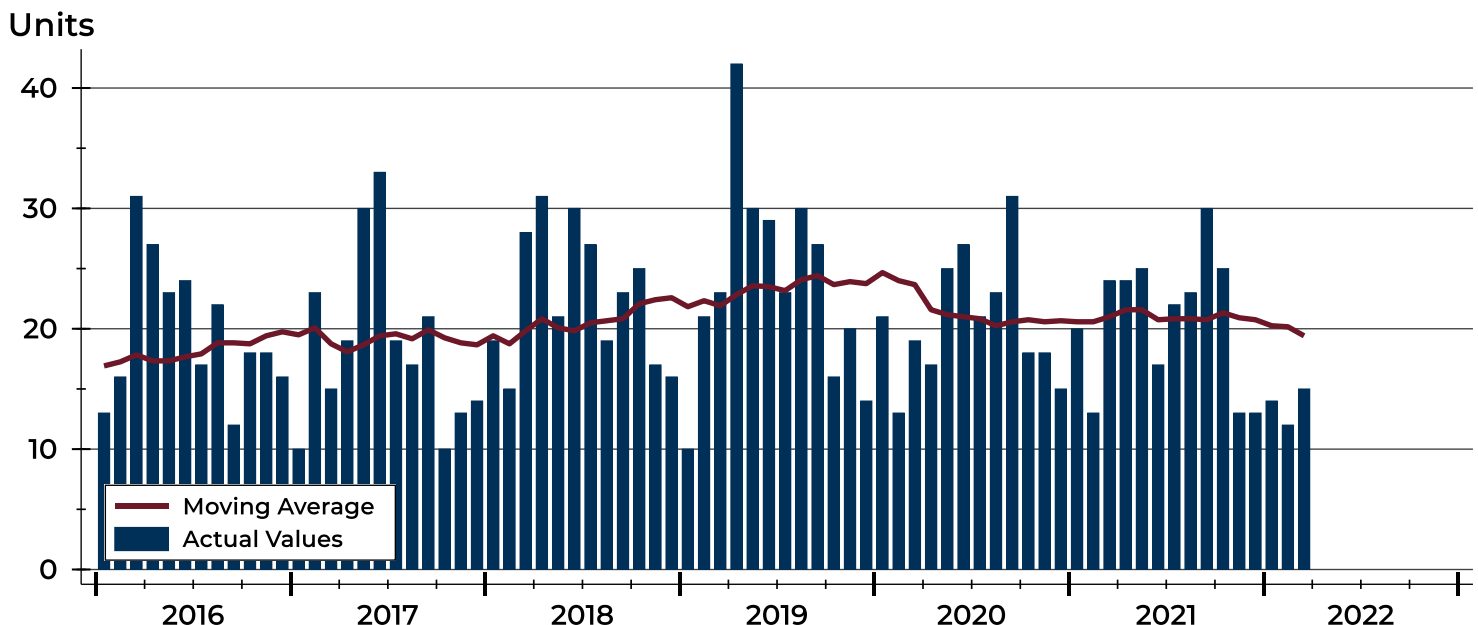


Douglas County (Excluding Lawrence) Contracts Written Analysis

Summary Statistics for Contracts Written		2022	March 2021	Change	2022	Year-to-Date 2021	Change
Contracts Written		15	24	-37.5%	41	57	-28.1%
Volume (1,000s)		4,388	7,145	-38.6%	13,892	16,932	-18.0%
Average	Sale Price	292,553	297,704	-1.7%	338,839	297,045	14.1%
	Days on Market	7	22	-68.2%	18	32	-43.8%
	Percent of Original	100.6%	100.6%	0.0%	100.7%	98.9%	1.8%
Median	Sale Price	254,900	236,750	7.7%	275,000	243,500	12.9%
	Days on Market	3	2	50.0%	4	4	0.0%
	Percent of Original	100.0%	100.0%	0.0%	100.0%	100.0%	0.0%

A total of 15 contracts for sale were written in Douglas County during the month of March, down from 24 in 2021. The median list price of these homes was \$254,900, up from \$236,750 the prior year. Half of the homes that went under contract in March were on the market less than 3 days, compared to 2 days in March 2021.

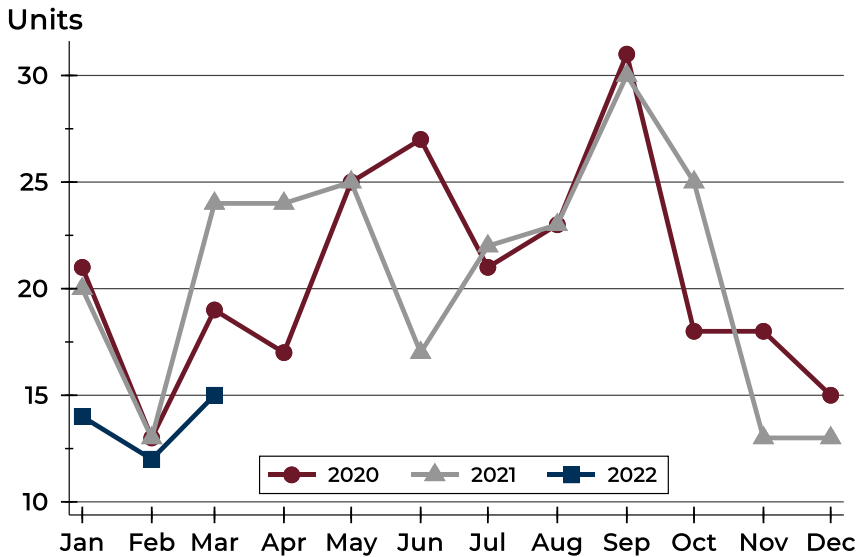
History of Contracts Written





Douglas County (Excluding Lawrence) Contracts Written Analysis

Contracts Written by Month



Month	2020	2021	2022
January	21	20	14
February	13	13	12
March	19	24	15
April	17	24	
May	25	25	
June	27	17	
July	21	22	
August	23	23	
September	31	30	
October	18	25	
November	18	13	
December	15	13	

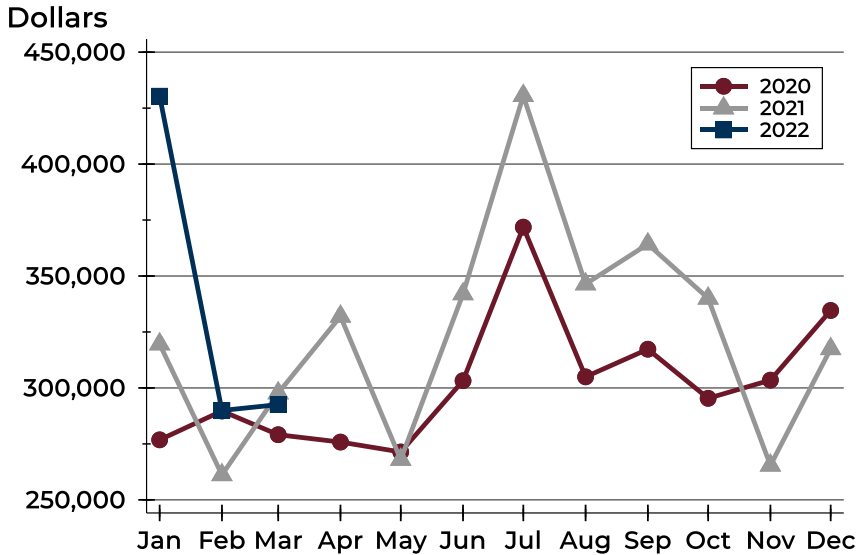
Contracts Written by Price Range

Price Range	Contracts Written		List Price		Days on Market		Price as % of Orig.	
	Number	Percent	Average	Median	Avg.	Med.	Avg.	Med.
Below \$50,000	0	0.0%	N/A	N/A	N/A	N/A	N/A	N/A
\$50,000-\$99,999	0	0.0%	N/A	N/A	N/A	N/A	N/A	N/A
\$100,000-\$149,999	0	0.0%	N/A	N/A	N/A	N/A	N/A	N/A
\$150,000-\$199,999	3	20.0%	179,967	175,000	4	2	100.0%	100.0%
\$200,000-\$249,999	4	26.7%	231,100	235,000	3	3	99.4%	100.0%
\$250,000-\$299,999	4	26.7%	264,950	264,950	4	4	101.3%	100.9%
\$300,000-\$349,999	0	0.0%	N/A	N/A	N/A	N/A	N/A	N/A
\$350,000-\$399,999	2	13.3%	382,200	382,200	24	24	102.7%	102.7%
\$400,000-\$449,999	0	0.0%	N/A	N/A	N/A	N/A	N/A	N/A
\$450,000-\$499,999	1	6.7%	499,900	499,900	12	12	100.0%	100.0%
\$500,000-\$599,999	1	6.7%	599,900	599,900	3	3	100.0%	100.0%
\$600,000-\$749,999	0	0.0%	N/A	N/A	N/A	N/A	N/A	N/A
\$750,000-\$999,999	0	0.0%	N/A	N/A	N/A	N/A	N/A	N/A
\$1,000,000 and up	0	0.0%	N/A	N/A	N/A	N/A	N/A	N/A



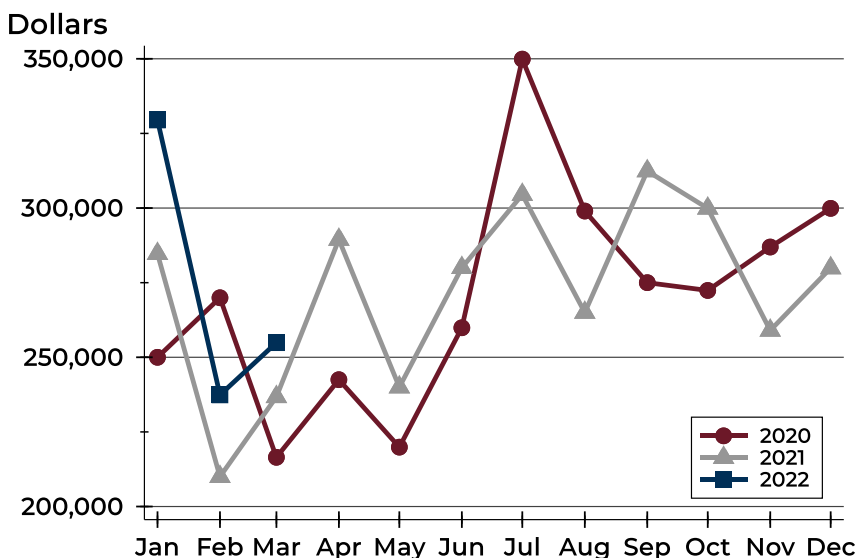
Douglas County (Excluding Lawrence) Contracts Written Analysis

Average Price



Month	2020	2021	2022
January	276,812	319,578	430,343
February	289,696	261,162	289,942
March	279,111	297,704	292,553
April	275,818	331,975	
May	271,400	268,014	
June	303,226	341,985	
July	371,826	430,550	
August	304,952	346,406	
September	317,306	364,257	
October	295,361	340,039	
November	303,492	265,431	
December	334,614	317,469	

Median Price

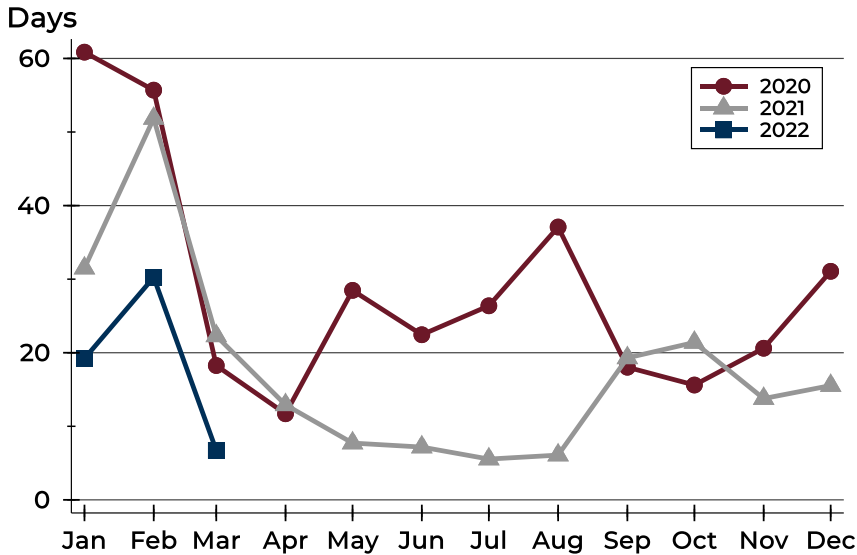


Month	2020	2021	2022
January	250,000	284,700	329,500
February	269,950	210,000	237,400
March	216,500	236,750	254,900
April	242,500	289,450	
May	219,900	240,000	
June	259,900	280,000	
July	349,900	304,500	
August	299,000	265,000	
September	275,000	312,400	
October	272,400	299,900	
November	286,950	259,000	
December	299,900	279,900	



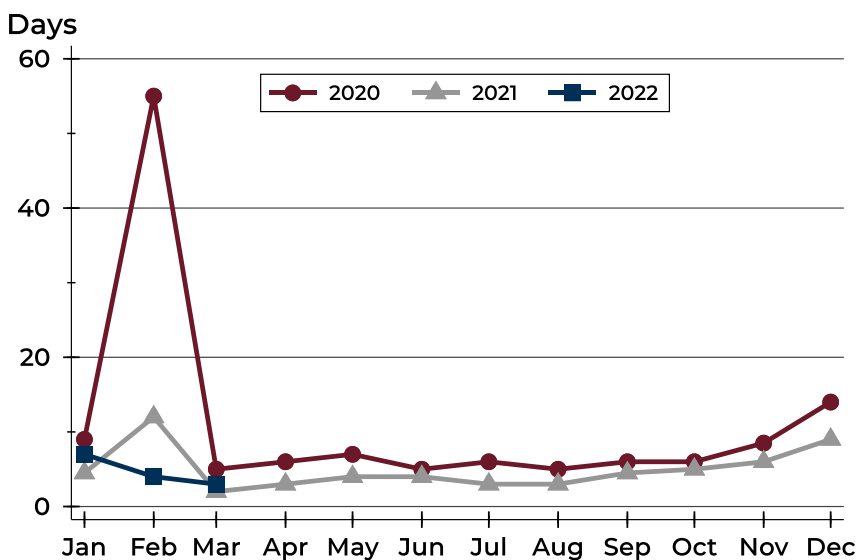
Douglas County (Excluding Lawrence) Contracts Written Analysis

Average DOM



Month	2020	2021	2022
January	61	32	19
February	56	52	30
March	18	22	7
April	12	13	
May	28	8	
June	22	7	
July	26	6	
August	37	6	
September	18	19	
October	16	21	
November	21	14	
December	31	16	

Median DOM



Month	2020	2021	2022
January	9	5	7
February	55	12	4
March	5	2	3
April	6	3	
May	7	4	
June	5	4	
July	6	3	
August	5	3	
September	6	5	
October	6	5	
November	9	6	
December	14	9	



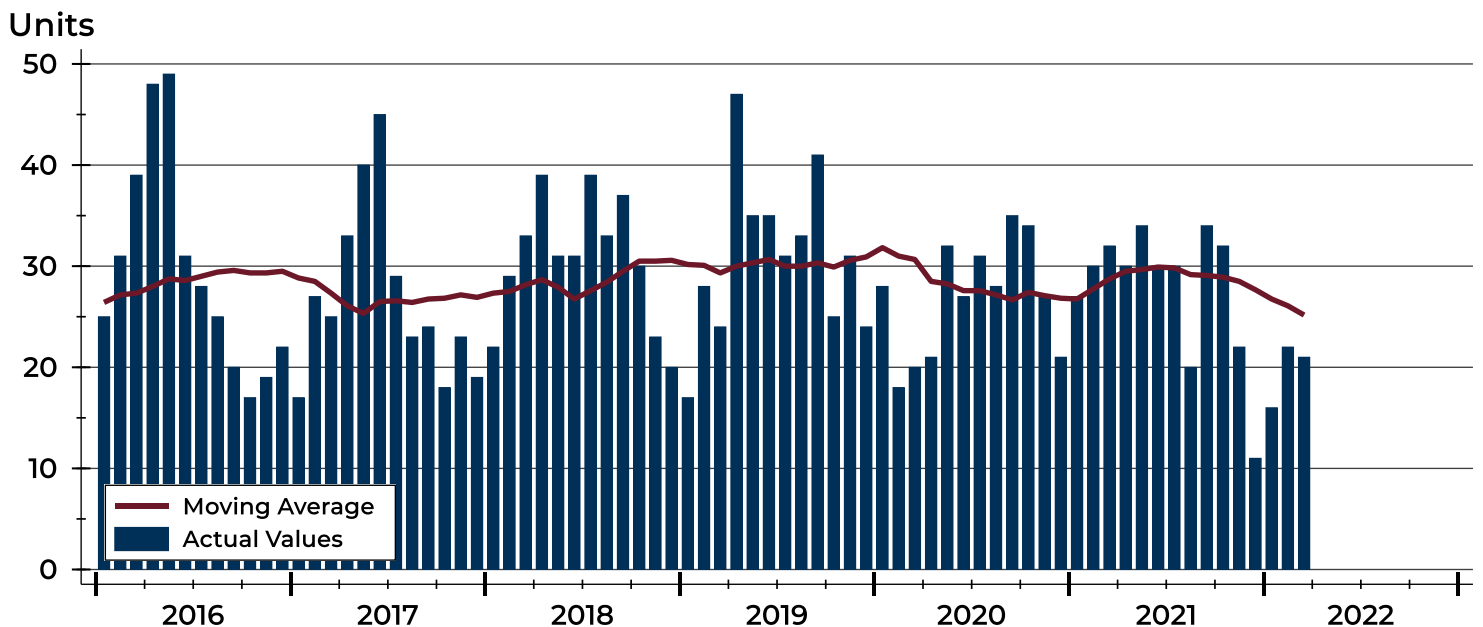
Douglas County (Excluding Lawrence) Pending Contracts Analysis

Summary Statistics for Pending Contracts		2022	End of March 2021	Change
Pending Contracts		21	32	-34.4%
Volume (1,000s)		6,832	9,451	-27.7%
Average	List Price	325,338	295,359	10.2%
	Days on Market	21	46	-54.3%
	Percent of Original	99.9%	99.6%	0.3%
Median	List Price	259,900	225,000	15.5%
	Days on Market	3	6	-50.0%
	Percent of Original	100.0%	100.0%	0.0%

A total of 21 listings in Douglas County had contracts pending at the end of March, down from 32 contracts pending at the end of March 2021.

Pending contracts reflect listings with a contract in place at the end of the month. In contrast, contracts written measures the number of listings put under contract during the month.

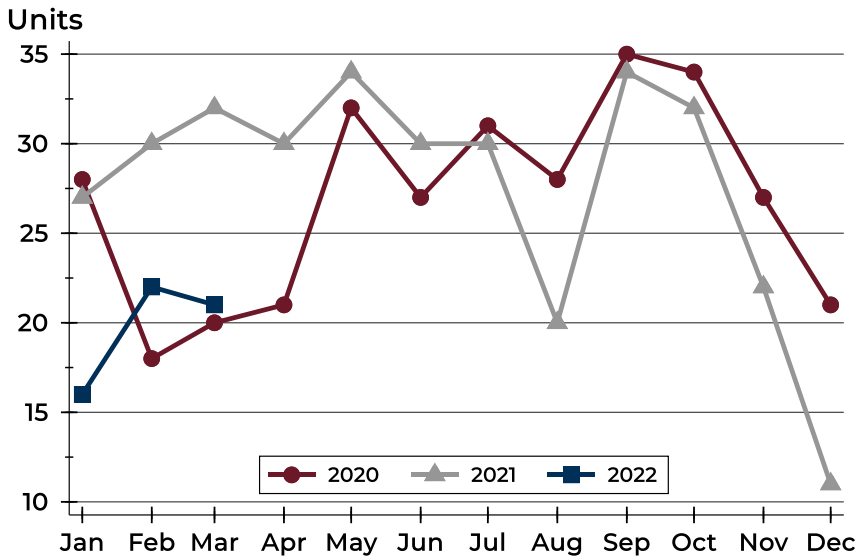
History of Pending Contracts





Douglas County (Excluding Lawrence) Pending Contracts Analysis

Pending Contracts by Month



Month	2020	2021	2022
January	28	27	16
February	18	30	22
March	20	32	21
April	21	30	
May	32	34	
June	27	30	
July	31	30	
August	28	20	
September	35	34	
October	34	32	
November	27	22	
December	21	11	

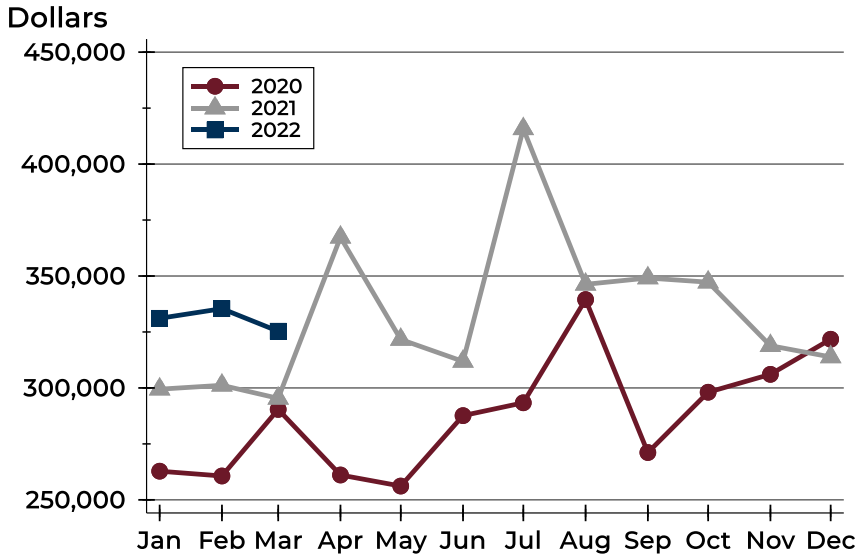
Pending Contracts by Price Range

Price Range	Pending Contracts		List Price		Days on Market		Price as % of Orig.	
	Number	Percent	Average	Median	Avg.	Med.	Avg.	Med.
Below \$50,000	0	0.0%	N/A	N/A	N/A	N/A	N/A	N/A
\$50,000-\$99,999	0	0.0%	N/A	N/A	N/A	N/A	N/A	N/A
\$100,000-\$149,999	1	4.8%	124,000	124,000	9	9	100.0%	100.0%
\$150,000-\$199,999	4	19.0%	184,950	185,000	38	5	99.4%	100.0%
\$200,000-\$249,999	5	23.8%	227,880	230,000	3	3	100.0%	100.0%
\$250,000-\$299,999	3	14.3%	268,300	270,000	4	3	100.0%	100.0%
\$300,000-\$349,999	1	4.8%	329,900	329,900	3	3	100.0%	100.0%
\$350,000-\$399,999	2	9.5%	382,200	382,200	24	24	100.0%	100.0%
\$400,000-\$449,999	1	4.8%	405,000	405,000	0	0	100.0%	100.0%
\$450,000-\$499,999	1	4.8%	499,900	499,900	12	12	100.0%	100.0%
\$500,000-\$599,999	1	4.8%	599,900	599,900	3	3	100.0%	100.0%
\$600,000-\$749,999	2	9.5%	712,450	712,450	98	98	100.0%	100.0%
\$750,000-\$999,999	0	0.0%	N/A	N/A	N/A	N/A	N/A	N/A
\$1,000,000 and up	0	0.0%	N/A	N/A	N/A	N/A	N/A	N/A



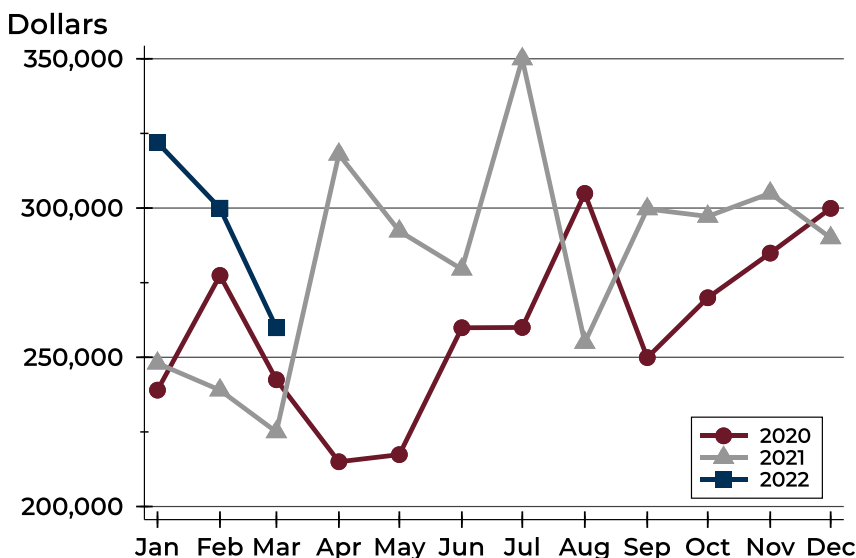
Douglas County (Excluding Lawrence) Pending Contracts Analysis

Average Price



Month	2020	2021	2022
January	262,813	299,446	331,106
February	260,678	301,182	335,409
March	290,408	295,359	325,338
April	261,110	367,297	
May	256,167	321,660	
June	287,633	311,863	
July	293,374	415,745	
August	339,482	346,287	
September	271,154	349,103	
October	298,091	347,239	
November	306,080	318,870	
December	321,752	313,845	

Median Price

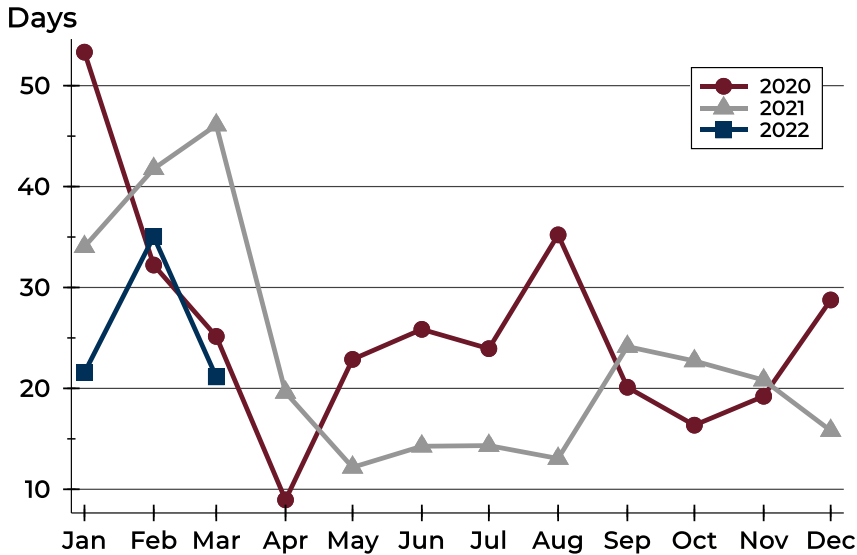


Month	2020	2021	2022
January	239,000	248,000	321,950
February	277,425	239,000	299,950
March	242,475	225,000	259,900
April	215,000	318,000	
May	217,400	292,250	
June	259,900	279,500	
July	260,000	349,950	
August	304,900	254,950	
September	249,900	299,700	
October	269,950	297,200	
November	284,900	304,950	
December	299,900	290,000	



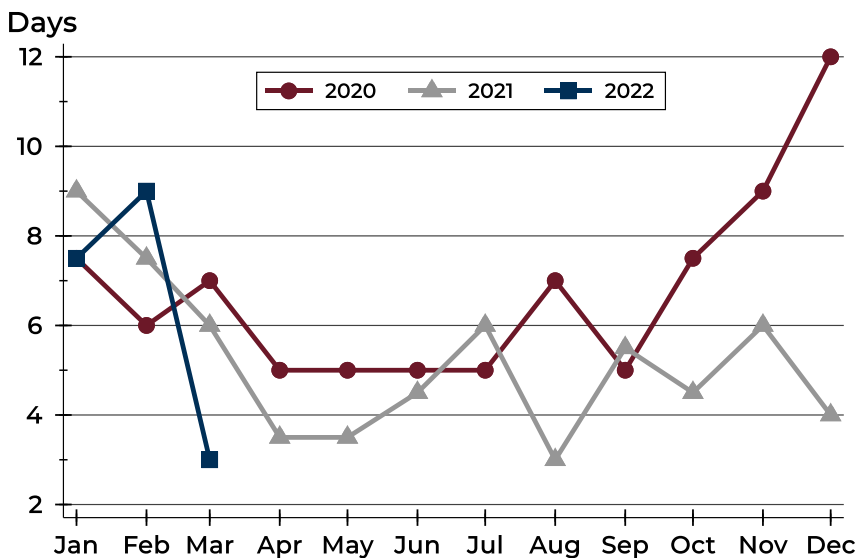
Douglas County (Excluding Lawrence) Pending Contracts Analysis

Average DOM



Month	2020	2021	2022
January	53	34	22
February	32	42	35
March	25	46	21
April	9	20	
May	23	12	
June	26	14	
July	24	14	
August	35	13	
September	20	24	
October	16	23	
November	19	21	
December	29	16	

Median DOM



Month	2020	2021	2022
January	8	9	8
February	6	8	9
March	7	6	3
April	5	4	
May	5	4	
June	5	5	
July	5	6	
August	7	3	
September	5	6	
October	8	5	
November	9	6	
December	12	4	