



City of Lawrence Housing Report



Market Overview

City of Lawrence Home Sales Rose in December

Total home sales in the City of Lawrence rose by 19.7% last month to 79 units, compared to 66 units in December 2023. Total sales volume was \$26.1 million, up 34.2% from a year earlier.

The median sale price in December was \$300,000, up from \$273,000 a year earlier. Homes that sold in December were typically on the market for 16 days and sold for 99.2% of their list prices.

City of Lawrence Active Listings Down at End of December

The total number of active listings in the City of Lawrence at the end of December was 122 units, down from 136 at the same point in 2023. This represents a 1.6 months' supply of homes available for sale. The median list price of homes on the market at the end of December was \$355,000.

During December, a total of 49 contracts were written up from 43 in December 2023. At the end of the month, there were 61 contracts still pending.

Report Contents

- Summary Statistics – Page 2
- Closed Listing Analysis – Page 3
- Active Listings Analysis – Page 7
- Months' Supply Analysis – Page 11
- New Listings Analysis – Page 12
- Contracts Written Analysis – Page 15
- Pending Contracts Analysis – Page 19

Contact Information

Rob Hulse, Executive Vice-President
 Lawrence Board of REALTORS®
 3838 W. 6th Street (at Monterey)
 Lawrence, KS 66049
 785-842-1843
Rob@LawrenceRealtor.com
www.LawrenceRealtor.com



City of Lawrence Summary Statistics

December MLS Statistics Three-year History		Current Month			Year-to-Date		
		2024	2023	2022	2024	2023	2022
Home Sales Change from prior year	79 19.7%	66 34.7%	49 -44.9%	918 4.7%	877 -21.8%	1,122 -13.2%	
Active Listings Change from prior year	122 -10.3%	136 34.7%	101 26.3%	N/A	N/A	N/A	
Months' Supply Change from prior year	1.6 -15.8%	1.9 72.7%	1.1 57.1%	N/A	N/A	N/A	
New Listings Change from prior year	43 -18.9%	53 0.0%	53 -30.3%	1,228 9.2%	1,125 -13.5%	1,300 -12.9%	
Contracts Written Change from prior year	49 14.0%	43 10.3%	39 -38.1%	925 5.6%	876 -19.3%	1,085 -15.6%	
Pending Contracts Change from prior year	61 17.3%	52 8.3%	48 -44.8%	N/A	N/A	N/A	
Sales Volume (1,000s) Change from prior year	26,084 34.2%	19,435 16.6%	16,666 -39.6%	315,254 7.2%	294,156 -20.1%	368,250 -3.9%	
Average	Sale Price Change from prior year	330,179 12.1%	294,469 -13.4%	340,120 9.7%	343,414 2.4%	335,411 2.2%	328,208 10.7%
	List Price of Actives Change from prior year	398,546 7.7%	370,118 7.0%	345,946 1.6%	N/A	N/A	N/A
	Days on Market Change from prior year	33 37.5%	24 -7.7%	26 30.0%	24 26.3%	19 26.7%	15 -6.3%
	Percent of List Change from prior year	98.5% -0.2%	98.7% 0.5%	98.2% -2.6%	99.1% -1.3%	100.4% -1.0%	101.4% 0.0%
	Percent of Original Change from prior year	96.5% -1.2%	97.7% 1.7%	96.1% -3.8%	98.2% -1.4%	99.6% -1.0%	100.6% -0.1%
Median	Sale Price Change from prior year	300,000 9.9%	273,000 -4.9%	287,000 2.5%	315,000 4.3%	302,000 4.1%	290,000 10.0%
	List Price of Actives Change from prior year	355,000 9.6%	324,000 1.3%	320,000 -8.9%	N/A	N/A	N/A
	Days on Market Change from prior year	16 128.6%	7 0.0%	7 40.0%	8 60.0%	5 25.0%	4 0.0%
	Percent of List Change from prior year	99.2% -0.8%	100.0% 0.0%	100.0% 0.0%	100.0% 0.0%	100.0% 0.0%	100.0% 0.0%
	Percent of Original Change from prior year	98.2% -1.8%	100.0% 0.0%	100.0% 0.0%	100.0% 0.0%	100.0% 0.0%	100.0% 0.0%

Note: Year-to-date statistics cannot be calculated for Active Listings, Months' Supply and Pending Contracts.



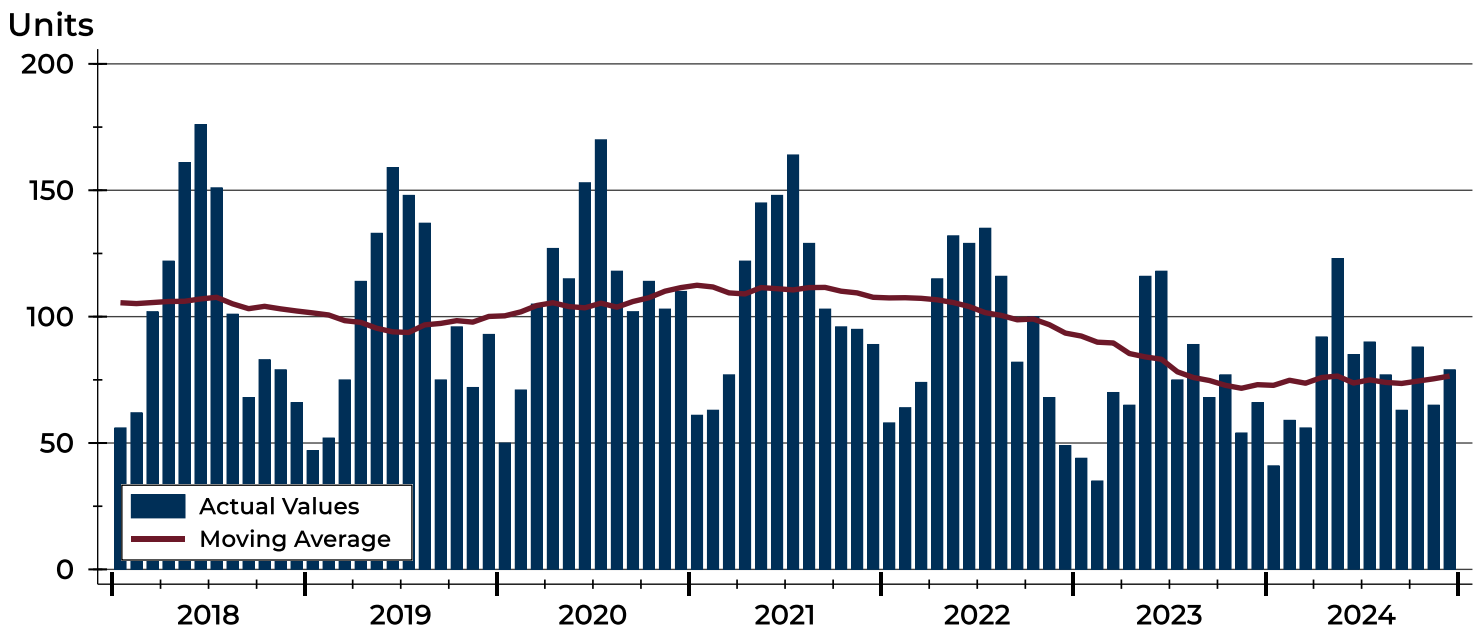
City of Lawrence Closed Listings Analysis

Summary Statistics for Closed Listings		2024	December 2023	Change	2024	Year-to-Date 2023	Change
Closed Listings		79	66	19.7%	918	877	4.7%
Volume (1,000s)		26,084	19,435	34.2%	315,254	294,156	7.2%
Months' Supply		1.6	1.9	-15.8%	N/A	N/A	N/A
Average	Sale Price	330,179	294,469	12.1%	343,414	335,411	2.4%
	Days on Market	33	24	37.5%	24	19	26.3%
	Percent of List	98.5%	98.7%	-0.2%	99.1%	100.4%	-1.3%
	Percent of Original	96.5%	97.7%	-1.2%	98.2%	99.6%	-1.4%
Median	Sale Price	300,000	273,000	9.9%	315,000	302,000	4.3%
	Days on Market	16	7	128.6%	8	5	60.0%
	Percent of List	99.2%	100.0%	-0.8%	100.0%	100.0%	0.0%
	Percent of Original	98.2%	100.0%	-1.8%	100.0%	100.0%	0.0%

A total of 79 homes sold in the City of Lawrence in December, up from 66 units in December 2023. Total sales volume rose to \$26.1 million compared to \$19.4 million in the previous year.

The median sales price in December was \$300,000, up 9.9% compared to the prior year. Median days on market was 16 days, up from 6 days in November, and up from 7 in December 2023.

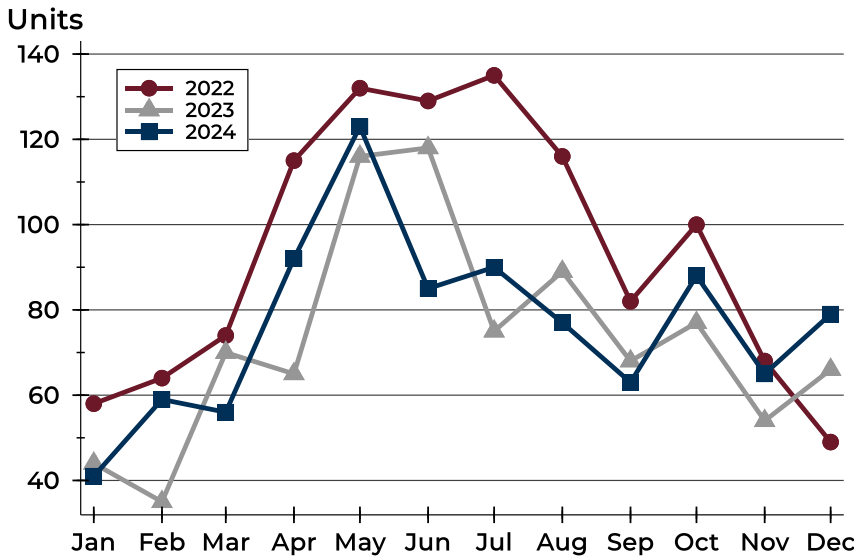
History of Closed Listings





City of Lawrence Closed Listings Analysis

Closed Listings by Month



Month	2022	2023	2024
January	58	44	41
February	64	35	59
March	74	70	56
April	115	65	92
May	132	116	123
June	129	118	85
July	135	75	90
August	116	89	77
September	82	68	63
October	100	77	88
November	68	54	65
December	49	66	79

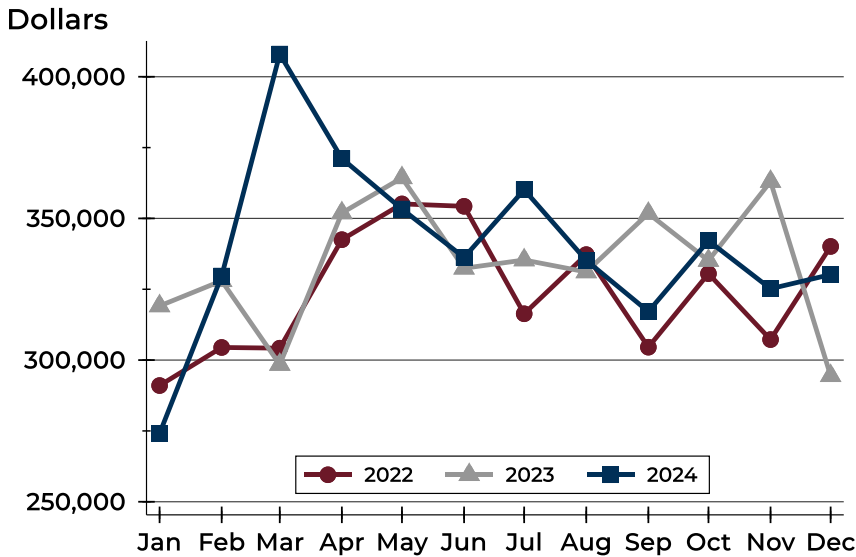
Closed Listings by Price Range

Price Range	Sales		Months' Supply	Sale Price		Days on Market		Price as % of List		Price as % of Orig.	
	Number	Percent		Average	Median	Avg.	Med.	Avg.	Med.	Avg.	Med.
Below \$50,000	0	0.0%	N/A	N/A	N/A	N/A	N/A	N/A	N/A	N/A	N/A
\$50,000-\$99,999	0	0.0%	N/A	N/A	N/A	N/A	N/A	N/A	N/A	N/A	N/A
\$100,000-\$149,999	2	2.5%	3.7	146,750	146,750	68	68	95.1%	95.1%	89.2%	89.2%
\$150,000-\$199,999	11	13.9%	0.7	169,909	168,000	25	29	96.9%	100.0%	89.2%	100.0%
\$200,000-\$249,999	14	17.7%	1.2	219,654	224,750	44	14	98.8%	100.0%	98.2%	100.0%
\$250,000-\$299,999	12	15.2%	0.9	272,658	266,500	27	17	97.9%	98.7%	96.8%	98.1%
\$300,000-\$349,999	11	13.9%	1.1	321,623	323,000	13	6	99.7%	98.2%	99.3%	98.2%
\$350,000-\$399,999	10	12.7%	2.1	374,900	379,500	32	19	99.3%	100.0%	98.6%	100.0%
\$400,000-\$449,999	6	7.6%	0.8	422,908	423,450	54	28	99.2%	98.9%	97.2%	97.5%
\$450,000-\$499,999	3	3.8%	1.2	463,367	465,000	15	1	96.0%	96.0%	94.8%	94.2%
\$500,000-\$599,999	5	6.3%	3.0	532,200	527,000	76	4	99.8%	100.0%	97.4%	99.1%
\$600,000-\$749,999	3	3.8%	3.7	669,300	670,000	9	3	99.3%	100.0%	99.3%	100.0%
\$750,000-\$999,999	2	2.5%	4.8	845,635	845,635	24	24	97.2%	97.2%	97.2%	97.2%
\$1,000,000 and up	0	0.0%	N/A	N/A	N/A	N/A	N/A	N/A	N/A	N/A	N/A



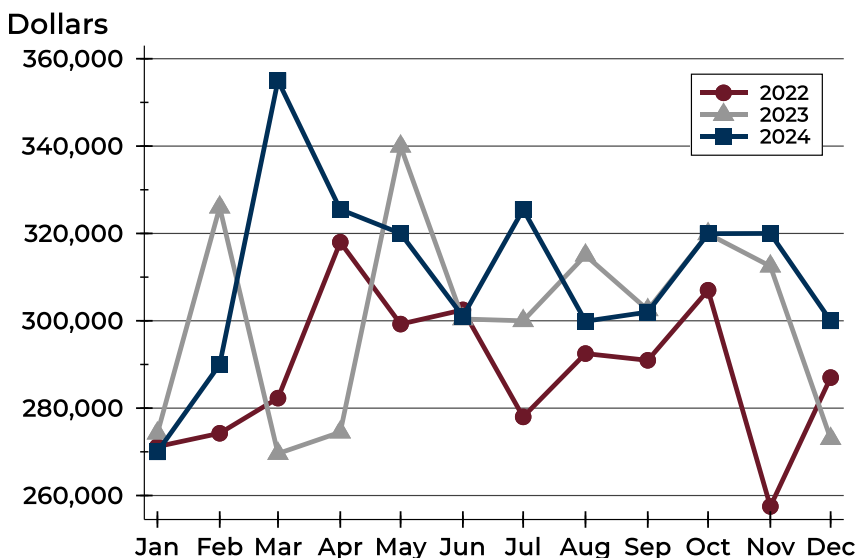
City of Lawrence Closed Listings Analysis

Average Price



Month	2022	2023	2024
January	291,023	319,116	274,119
February	304,454	327,994	329,665
March	304,215	298,441	408,006
April	342,504	351,932	371,161
May	355,125	364,323	353,316
June	354,276	332,429	336,234
July	316,345	335,322	360,140
August	337,220	331,109	335,190
September	304,560	351,738	317,140
October	330,510	335,150	342,135
November	307,240	363,014	325,193
December	340,120	294,469	330,179

Median Price

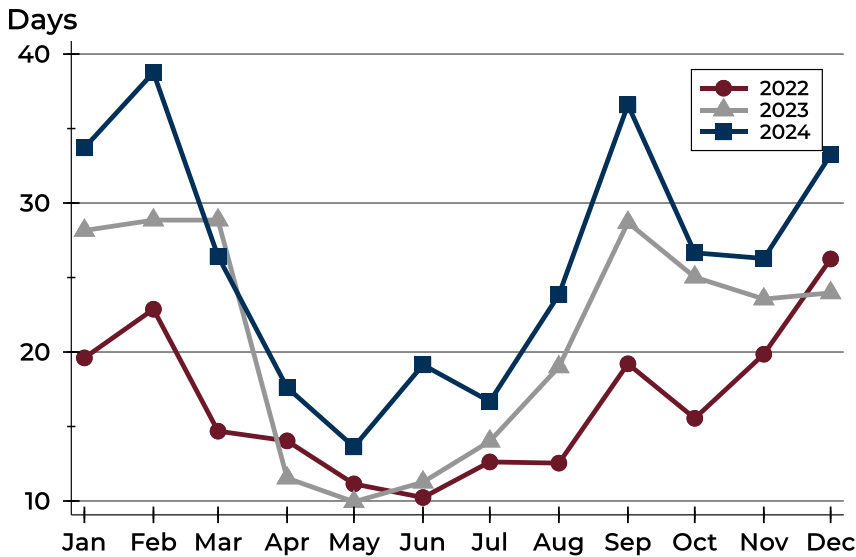


Month	2022	2023	2024
January	271,200	274,250	270,000
February	274,250	326,000	290,000
March	282,300	269,600	355,000
April	318,000	274,500	325,500
May	299,243	339,950	320,000
June	302,500	300,415	301,000
July	278,000	300,000	325,500
August	292,500	315,000	299,900
September	290,950	302,500	302,000
October	307,000	319,900	319,950
November	257,500	312,500	320,000
December	287,000	273,000	300,000



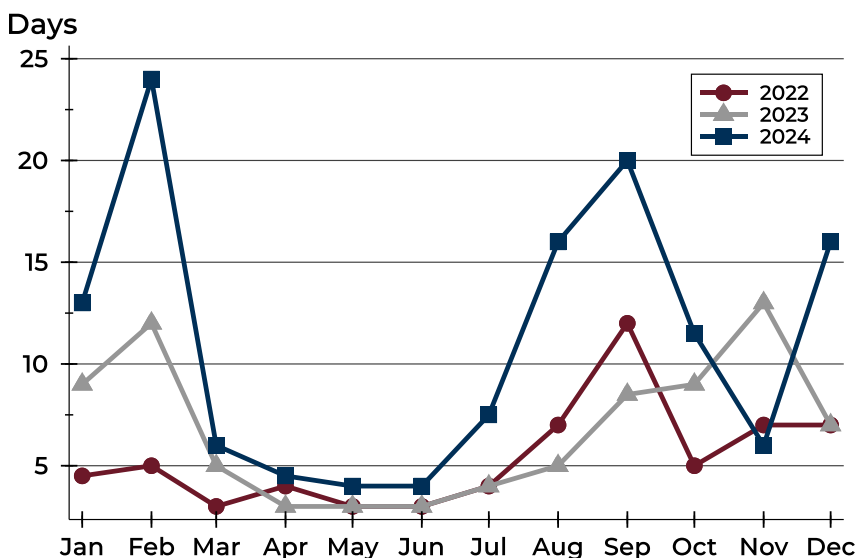
City of Lawrence Closed Listings Analysis

Average DOM



Month	2022	2023	2024
January	20	28	34
February	23	29	39
March	15	29	26
April	14	12	18
May	11	10	14
June	10	11	19
July	13	14	17
August	13	19	24
September	19	29	37
October	16	25	27
November	20	24	26
December	26	24	33

Median DOM



Month	2022	2023	2024
January	5	9	13
February	5	12	24
March	3	5	6
April	4	3	5
May	3	3	4
June	3	3	4
July	4	4	8
August	7	5	16
September	12	9	20
October	5	9	12
November	7	13	6
December	7	7	16



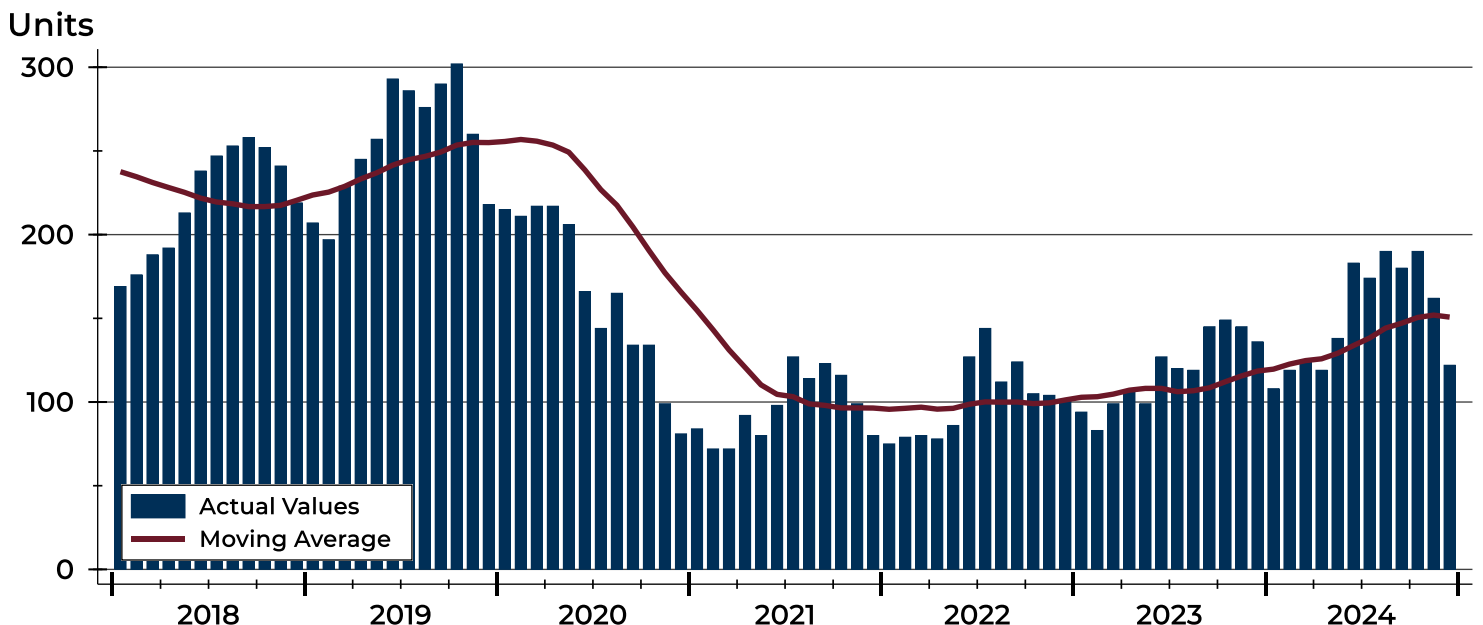
City of Lawrence Active Listings Analysis

Summary Statistics for Active Listings		2024	2023	Change
Active Listings		122	136	-10.3%
Volume (1,000s)		48,623	50,336	-3.4%
Months' Supply		1.6	1.9	-15.8%
Average	List Price	398,546	370,118	7.7%
	Days on Market	83	69	20.3%
	Percent of Original	98.1%	99.1%	-1.0%
Median	List Price	355,000	324,000	9.6%
	Days on Market	70	51	37.3%
	Percent of Original	100.0%	100.0%	0.0%

A total of 122 homes were available for sale in the City of Lawrence at the end of December. This represents a 1.6 months' supply of active listings.

The median list price of homes on the market at the end of December was \$355,000, up 9.6% from 2023. The typical time on market for active listings was 70 days, up from 51 days a year earlier.

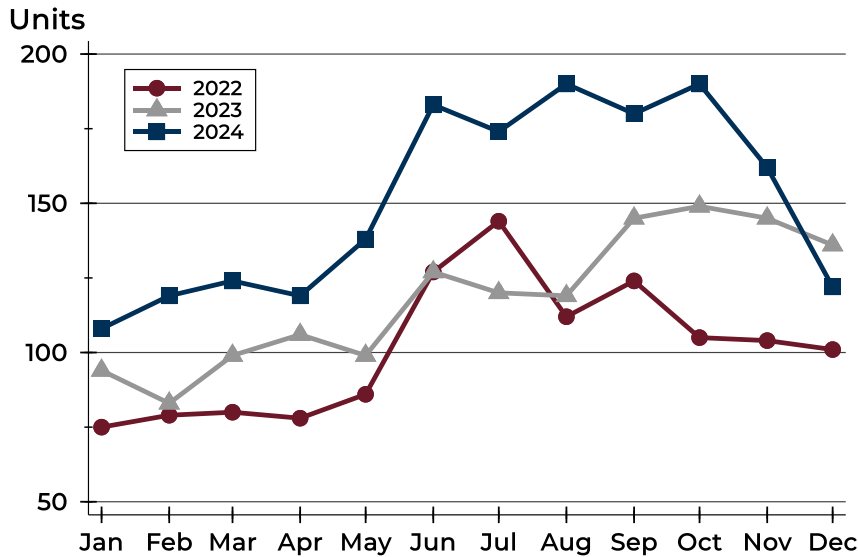
History of Active Listings





City of Lawrence Active Listings Analysis

Active Listings by Month



Month	2022	2023	2024
January	75	94	108
February	79	83	119
March	80	99	124
April	78	106	119
May	86	99	138
June	127	127	183
July	144	120	174
August	112	119	190
September	124	145	180
October	105	149	190
November	104	145	162
December	101	136	122

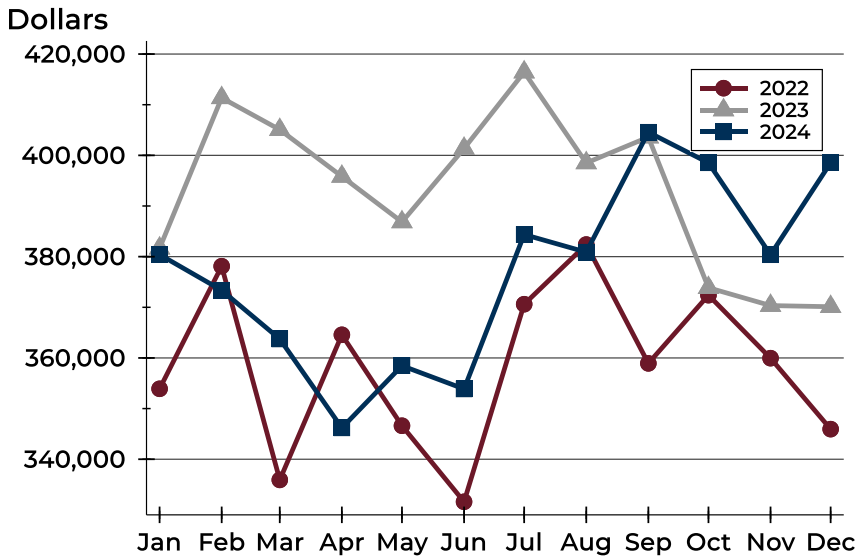
Active Listings by Price Range

Price Range	Active Listings Number	Active Listings Percent	Months' Supply	List Price Average	List Price Median	Days on Market Avg.	Days on Market Med.	Price as % of Orig. Avg.	Price as % of Orig. Med.
Below \$50,000	3	2.5%	N/A	1,398	1,250	26	15	97.5%	100.0%
\$50,000-\$99,999	4	3.3%	N/A	84,905	86,725	60	46	92.8%	99.1%
\$100,000-\$149,999	8	6.6%	3.7	130,200	131,950	47	37	95.8%	99.3%
\$150,000-\$199,999	5	4.1%	0.7	180,380	189,000	57	70	99.4%	100.0%
\$200,000-\$249,999	13	10.7%	1.2	234,681	235,000	89	68	99.0%	100.0%
\$250,000-\$299,999	12	9.8%	0.9	290,150	299,000	54	47	97.8%	100.0%
\$300,000-\$349,999	13	10.7%	1.1	317,138	309,900	103	107	97.2%	100.0%
\$350,000-\$399,999	20	16.4%	2.1	371,160	369,950	88	108	99.2%	100.0%
\$400,000-\$449,999	4	3.3%	0.8	433,225	434,000	71	73	98.5%	98.5%
\$450,000-\$499,999	6	4.9%	1.2	480,550	479,000	35	34	99.1%	100.0%
\$500,000-\$599,999	16	13.1%	3.0	543,625	549,450	107	95	98.7%	100.0%
\$600,000-\$749,999	10	8.2%	3.7	686,750	687,000	100	87	98.1%	100.0%
\$750,000-\$999,999	6	4.9%	4.8	854,983	823,500	76	70	98.5%	100.0%
\$1,000,000 and up	2	1.6%	N/A	1,472,500	1,472,500	285	285	96.0%	96.0%



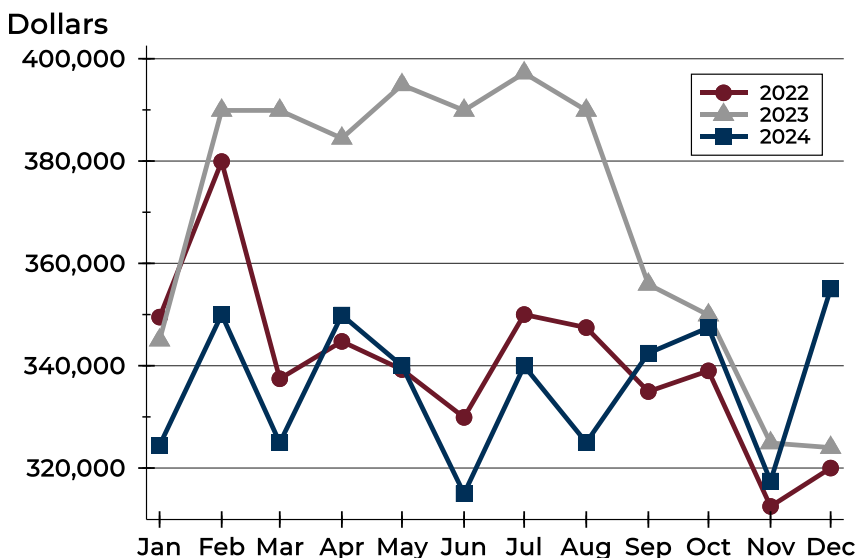
City of Lawrence Active Listings Analysis

Average Price



Month	2022	2023	2024
January	353,910	381,662	380,405
February	378,114	411,359	373,361
March	335,920	405,067	363,744
April	364,571	395,842	346,189
May	346,614	386,853	358,466
June	331,603	401,362	353,875
July	370,614	416,435	384,366
August	382,390	398,505	380,883
September	358,932	403,598	404,570
October	372,396	373,865	398,530
November	359,954	370,337	380,374
December	345,946	370,118	398,546

Median Price

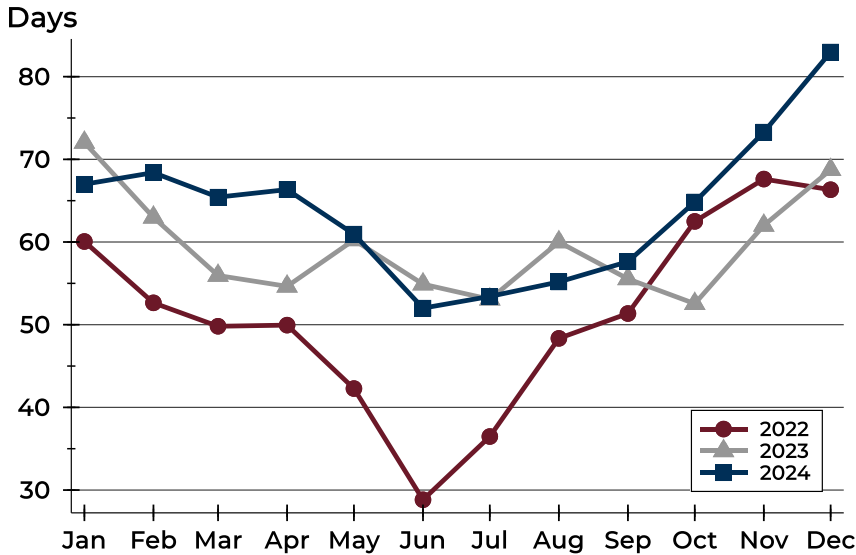


Month	2022	2023	2024
January	349,500	345,000	324,450
February	379,900	389,900	350,000
March	337,450	389,900	324,950
April	344,750	384,450	349,900
May	339,250	394,900	340,000
June	329,900	389,900	315,000
July	350,000	397,200	339,950
August	347,450	389,900	325,000
September	334,950	355,900	342,450
October	339,000	349,900	347,450
November	312,500	324,900	317,450
December	320,000	324,000	355,000



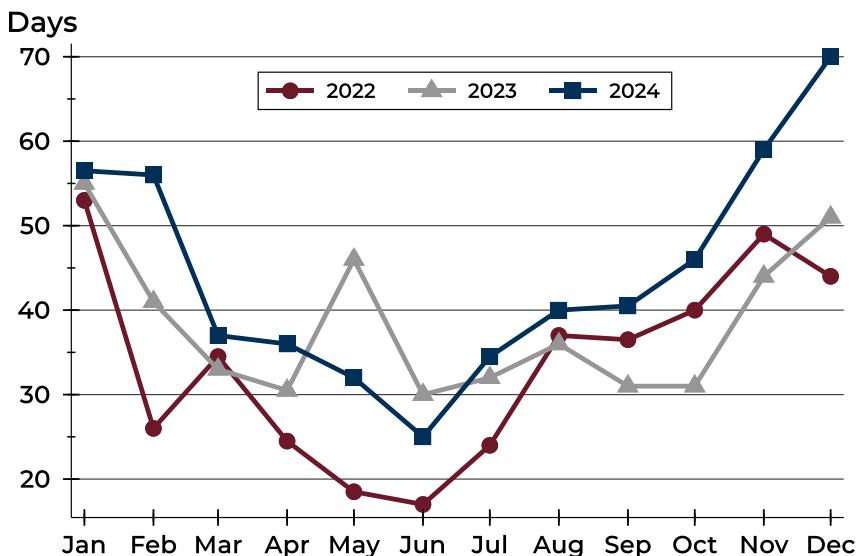
City of Lawrence Active Listings Analysis

Average DOM



Month	2022	2023	2024
January	60	72	67
February	53	63	68
March	50	56	65
April	50	55	66
May	42	60	61
June	29	55	52
July	36	53	53
August	48	60	55
September	51	56	58
October	62	53	65
November	68	62	73
December	66	69	83

Median DOM

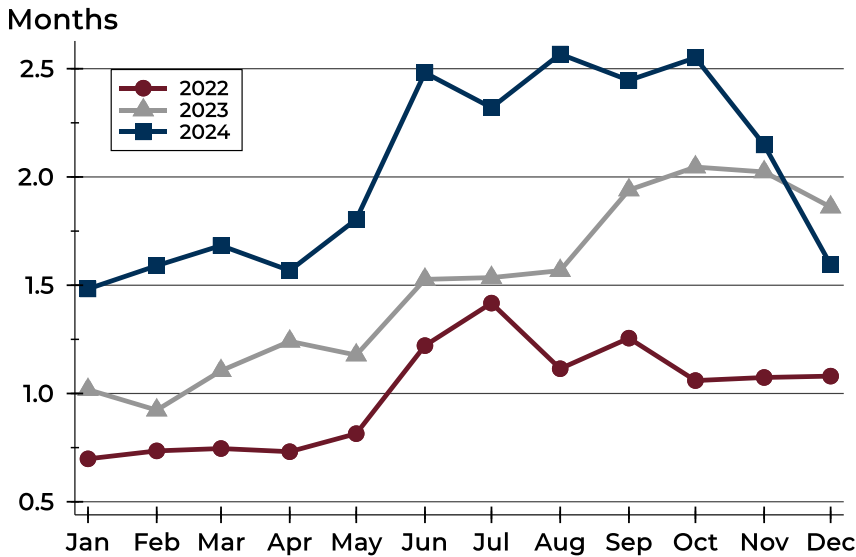


Month	2022	2023	2024
January	53	55	57
February	26	41	56
March	35	33	37
April	25	31	36
May	19	46	32
June	17	30	25
July	24	32	35
August	37	36	40
September	37	31	41
October	40	31	46
November	49	44	59
December	44	51	70



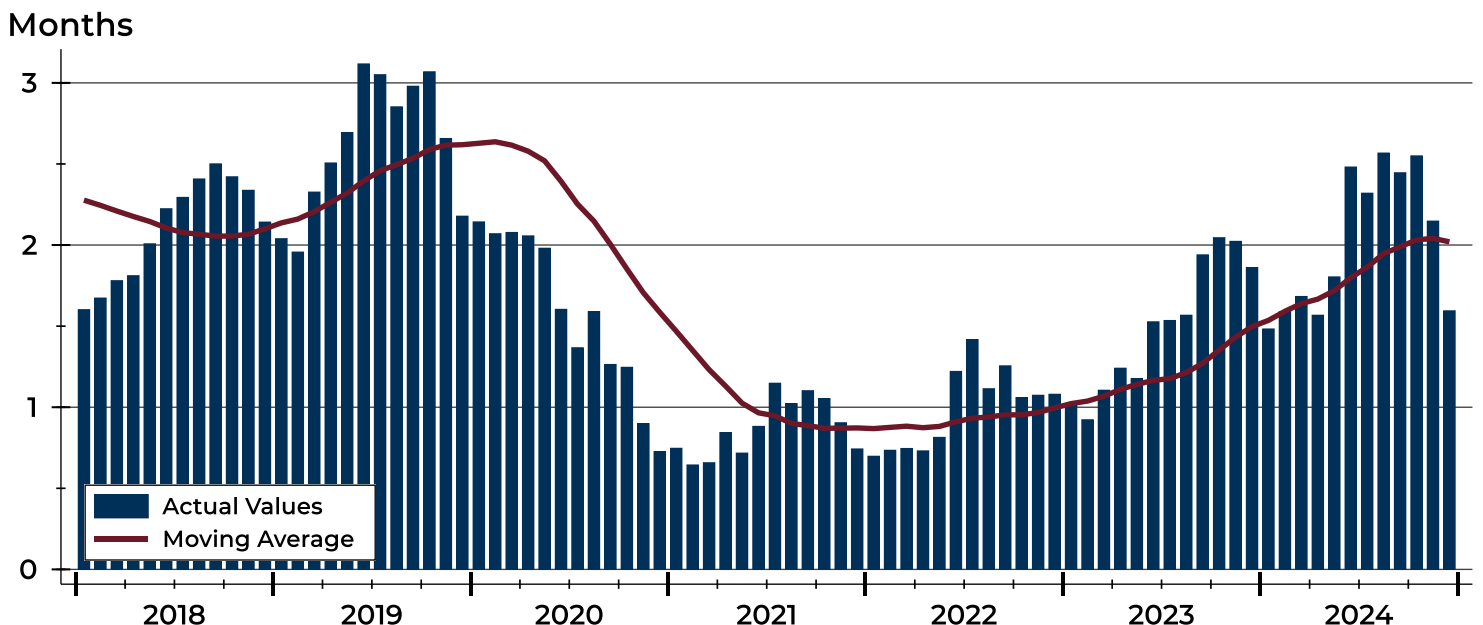
City of Lawrence Months' Supply Analysis

Months' Supply by Month



Month	2022	2023	2024
January	0.7	1.0	1.5
February	0.7	0.9	1.6
March	0.7	1.1	1.7
April	0.7	1.2	1.6
May	0.8	1.2	1.8
June	1.2	1.5	2.5
July	1.4	1.5	2.3
August	1.1	1.6	2.6
September	1.3	1.9	2.4
October	1.1	2.0	2.6
November	1.1	2.0	2.1
December	1.1	1.9	1.6

History of Month's Supply





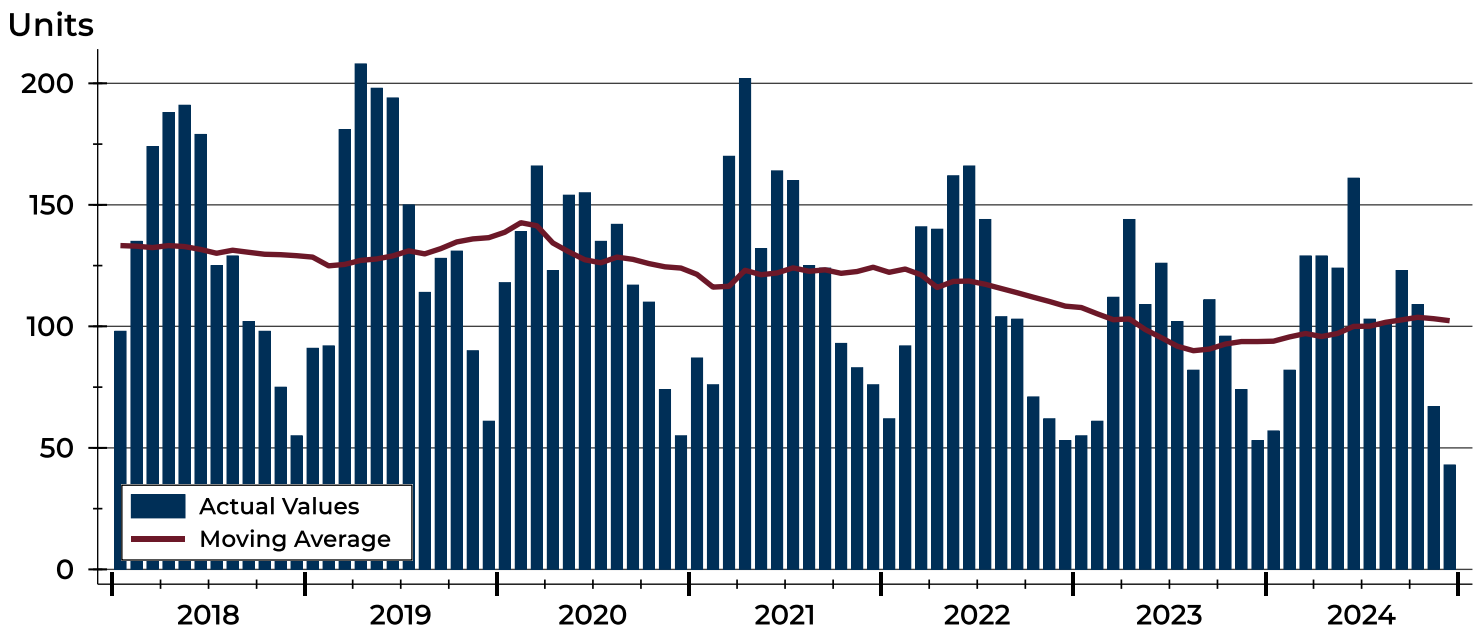
City of Lawrence New Listings Analysis

Summary Statistics for New Listings		2024	December 2023	Change
Current Month	New Listings	43	53	-18.9%
	Volume (1,000s)	16,615	17,149	-3.1%
	Average List Price	386,407	323,562	19.4%
	Median List Price	350,000	280,000	25.0%
Year-to-Date	New Listings	1,228	1,125	9.2%
	Volume (1,000s)	436,768	377,801	15.6%
	Average List Price	355,674	335,823	5.9%
	Median List Price	319,000	301,500	5.8%

A total of 43 new listings were added in the City of Lawrence during December, down 18.9% from the same month in 2023. Year-to-date the City of Lawrence has seen 1,228 new listings.

The median list price of these homes was \$350,000 up from \$280,000 in 2023.

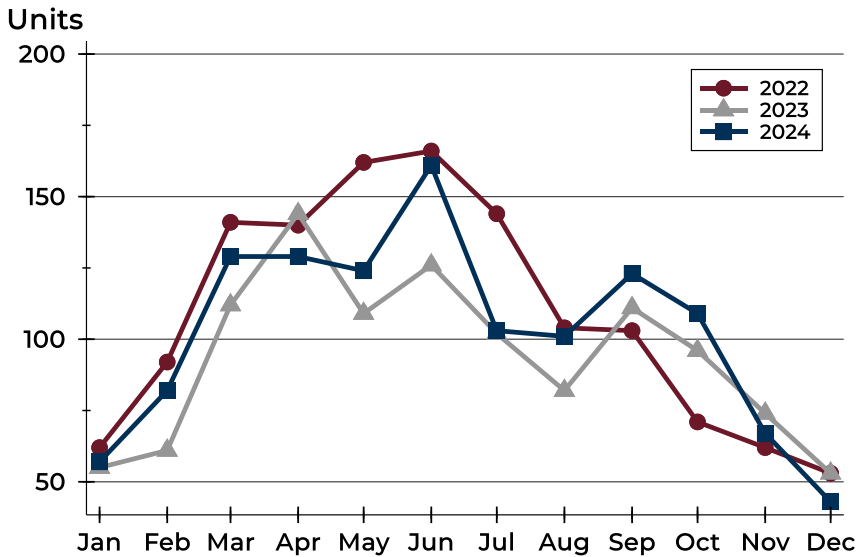
History of New Listings





City of Lawrence New Listings Analysis

New Listings by Month



Month	2022	2023	2024
January	62	55	57
February	92	61	82
March	141	112	129
April	140	144	129
May	162	109	124
June	166	126	161
July	144	102	103
August	104	82	101
September	103	111	123
October	71	96	109
November	62	74	67
December	53	53	43

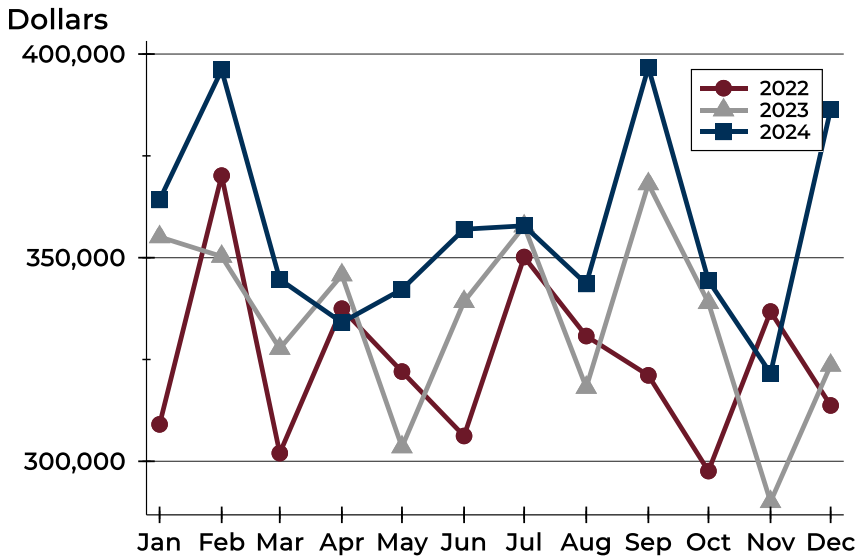
New Listings by Price Range

Price Range	New Listings		List Price		Days on Market		Price as % of Orig.	
	Number	Percent	Average	Median	Avg.	Med.	Avg.	Med.
Below \$50,000	1	2.3%	1,250	1,250	22	22	92.6%	92.6%
\$50,000-\$99,999	0	0.0%	N/A	N/A	N/A	N/A	N/A	N/A
\$100,000-\$149,999	1	2.3%	149,995	149,995	4	4	100.0%	100.0%
\$150,000-\$199,999	2	4.7%	176,500	176,500	15	15	100.0%	100.0%
\$200,000-\$249,999	7	16.3%	231,236	225,000	17	21	100.4%	100.0%
\$250,000-\$299,999	7	16.3%	281,929	289,900	7	6	100.5%	100.0%
\$300,000-\$349,999	3	7.0%	328,300	329,900	3	3	100.0%	100.0%
\$350,000-\$399,999	6	14.0%	372,283	379,450	14	9	100.0%	100.0%
\$400,000-\$449,999	3	7.0%	425,000	425,000	23	23	100.0%	100.0%
\$450,000-\$499,999	3	7.0%	478,167	479,000	20	21	100.0%	100.0%
\$500,000-\$599,999	5	11.6%	546,000	525,000	17	18	100.0%	100.0%
\$600,000-\$749,999	3	7.0%	687,667	699,000	26	30	100.0%	100.0%
\$750,000-\$999,999	2	4.7%	899,000	899,000	22	22	100.0%	100.0%
\$1,000,000 and up	0	0.0%	N/A	N/A	N/A	N/A	N/A	N/A



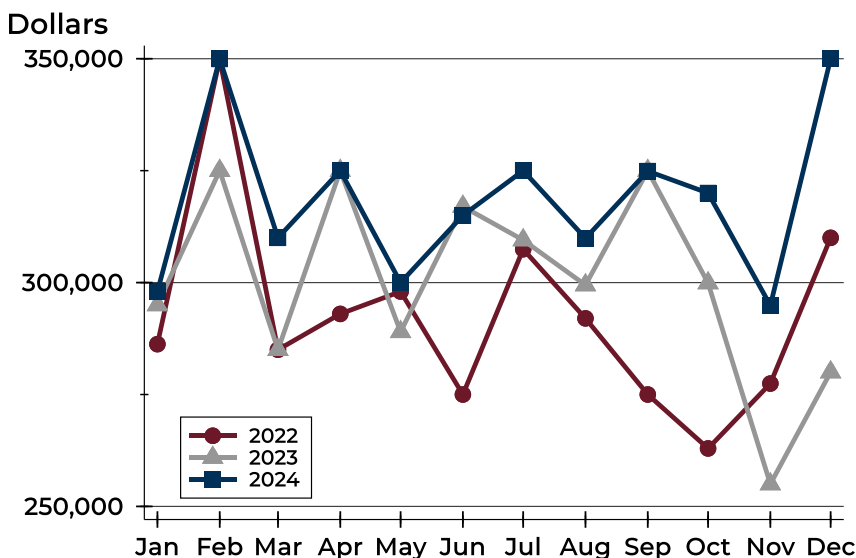
City of Lawrence New Listings Analysis

Average Price



Month	2022	2023	2024
January	309,069	355,103	364,190
February	370,146	350,309	396,092
March	302,005	327,690	344,669
April	337,476	345,750	334,092
May	322,036	303,520	342,222
June	306,220	339,209	356,985
July	350,165	357,767	357,842
August	330,760	318,123	343,558
September	321,108	368,120	396,750
October	297,609	338,933	344,402
November	336,777	290,067	321,594
December	313,717	323,562	386,407

Median Price



Month	2022	2023	2024
January	286,250	295,000	298,000
February	349,900	325,000	349,950
March	285,000	285,000	310,000
April	293,000	325,000	325,000
May	298,000	289,000	300,000
June	275,000	317,000	315,000
July	307,450	309,500	325,000
August	292,000	299,450	309,900
September	275,000	325,000	324,900
October	262,950	299,900	320,000
November	277,450	255,000	294,900
December	310,000	280,000	350,000



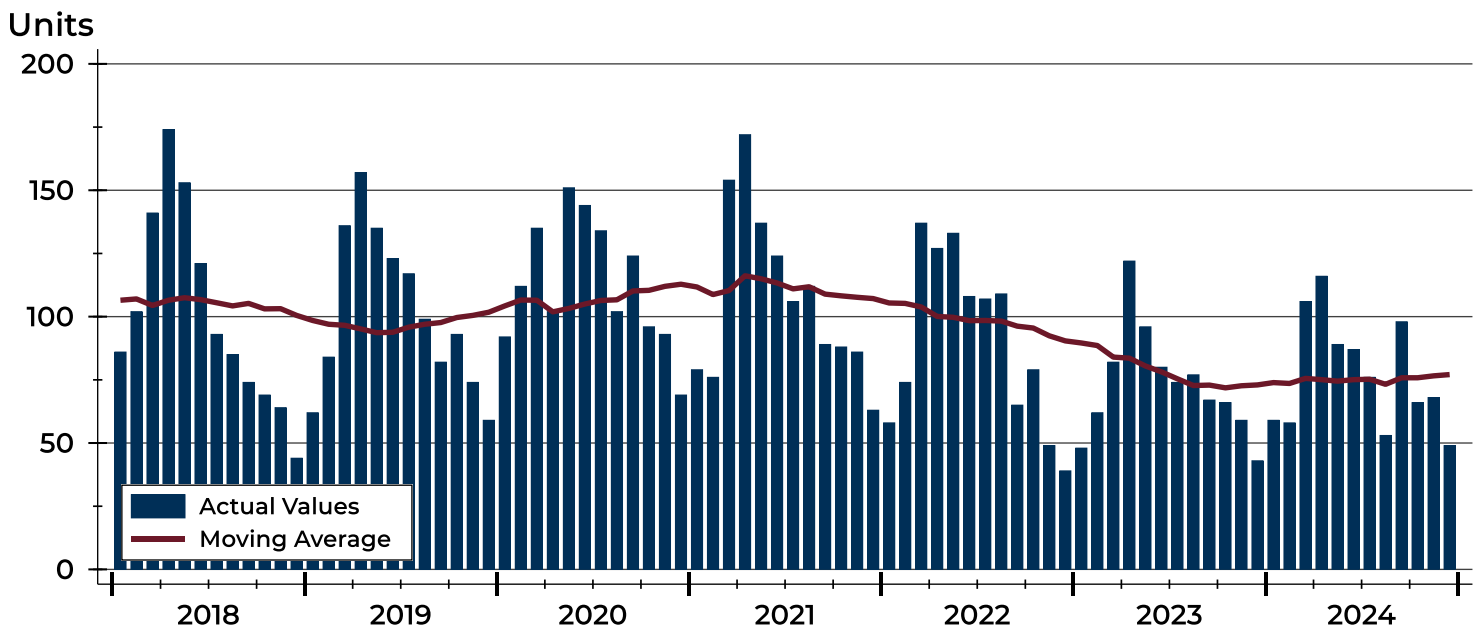
City of Lawrence Contracts Written Analysis

Summary Statistics for Contracts Written		December			Year-to-Date		
		2024	2023	Change	2024	2023	Change
Contracts Written		49	43	14.0%	925	876	5.6%
Volume (1,000s)		17,060	12,883	32.4%	325,639	290,918	11.9%
Average	Sale Price	348,169	299,601	16.2%	352,042	332,099	6.0%
	Days on Market	41	36	13.9%	25	20	25.0%
	Percent of Original	97.8%	96.3%	1.6%	98.3%	99.5%	-1.2%
Median	Sale Price	289,900	280,000	3.5%	315,000	299,900	5.0%
	Days on Market	29	17	70.6%	8	5	60.0%
	Percent of Original	100.0%	98.5%	1.5%	100.0%	100.0%	0.0%

A total of 49 contracts for sale were written in the City of Lawrence during the month of December, up from 43 in 2023. The median list price of these homes was \$289,900, up from \$280,000 the prior year.

Half of the homes that went under contract in December were on the market less than 29 days, compared to 17 days in December 2023.

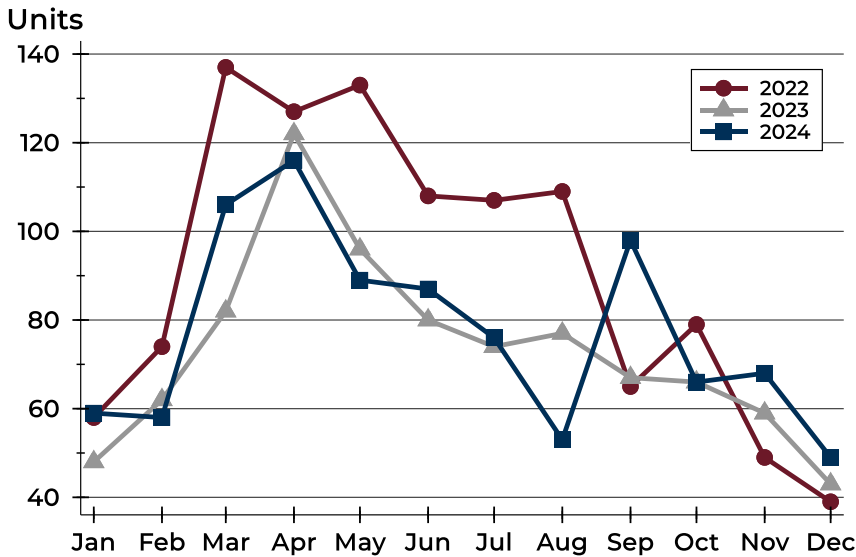
History of Contracts Written





City of Lawrence Contracts Written Analysis

Contracts Written by Month



Month	2022	2023	2024
January	58	48	59
February	74	62	58
March	137	82	106
April	127	122	116
May	133	96	89
June	108	80	87
July	107	74	76
August	109	77	53
September	65	67	98
October	79	66	66
November	49	59	68
December	39	43	49

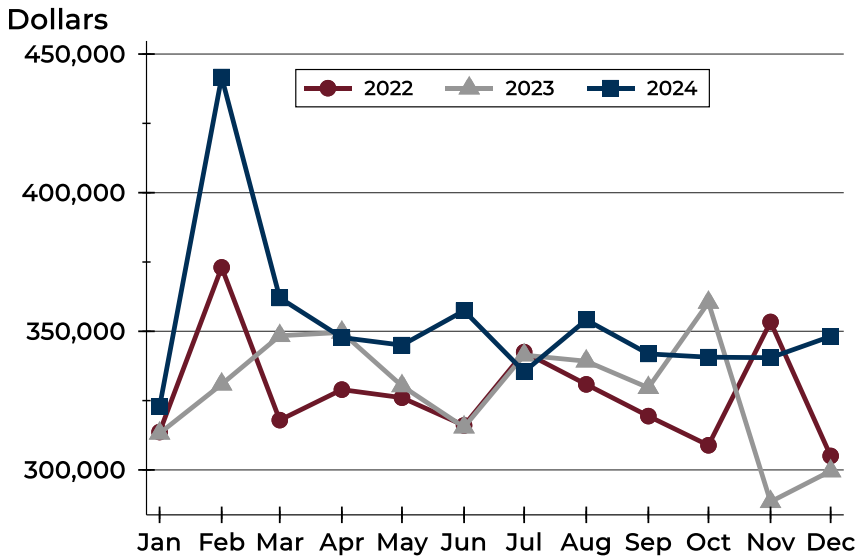
Contracts Written by Price Range

Price Range	Contracts Written		List Price		Days on Market		Price as % of Orig.	
	Number	Percent	Average	Median	Avg.	Med.	Avg.	Med.
Below \$50,000	0	0.0%	N/A	N/A	N/A	N/A	N/A	N/A
\$50,000-\$99,999	0	0.0%	N/A	N/A	N/A	N/A	N/A	N/A
\$100,000-\$149,999	3	6.1%	141,965	149,900	38	51	96.5%	100.0%
\$150,000-\$199,999	4	8.2%	170,100	163,700	61	26	99.2%	100.0%
\$200,000-\$249,999	7	14.3%	228,400	224,900	39	29	97.5%	100.0%
\$250,000-\$299,999	14	28.6%	281,871	282,000	35	27	97.5%	100.0%
\$300,000-\$349,999	7	14.3%	331,257	329,900	27	8	98.6%	100.0%
\$350,000-\$399,999	4	8.2%	380,500	386,500	20	19	98.8%	100.0%
\$400,000-\$449,999	4	8.2%	418,950	417,450	36	28	99.2%	99.4%
\$450,000-\$499,999	1	2.0%	497,500	497,500	11	11	100.0%	100.0%
\$500,000-\$599,999	3	6.1%	558,333	555,000	68	38	99.4%	100.0%
\$600,000-\$749,999	1	2.0%	719,900	719,900	108	108	100.0%	100.0%
\$750,000-\$999,999	0	0.0%	N/A	N/A	N/A	N/A	N/A	N/A
\$1,000,000 and up	1	2.0%	1,999,999	1,999,999	151	151	77.2%	77.2%



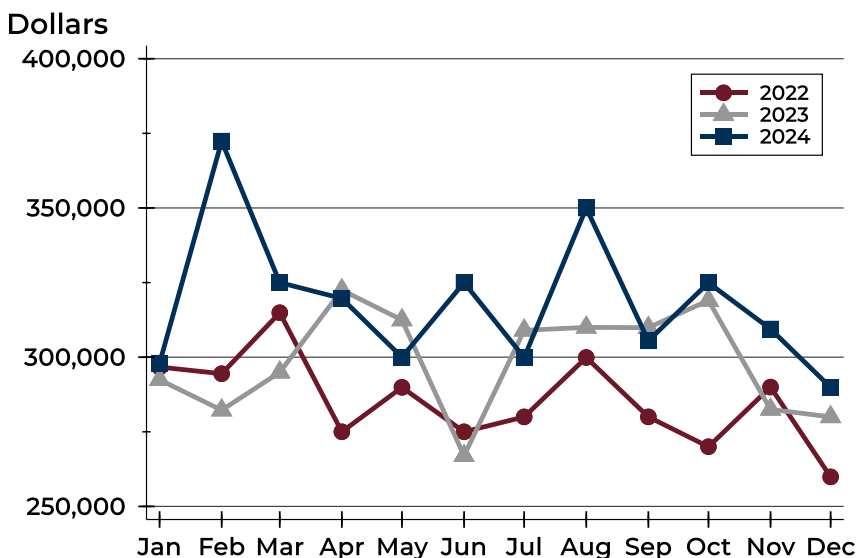
City of Lawrence Contracts Written Analysis

Average Price



Month	2022	2023	2024
January	313,674	313,207	322,803
February	373,052	330,911	441,710
March	317,961	348,394	362,046
April	328,966	349,615	347,752
May	326,059	330,296	345,003
June	316,044	315,423	357,422
July	342,488	341,411	335,414
August	330,861	339,212	354,102
September	319,416	329,643	341,849
October	308,888	360,391	340,669
November	353,371	288,514	340,476
December	305,041	299,601	348,169

Median Price

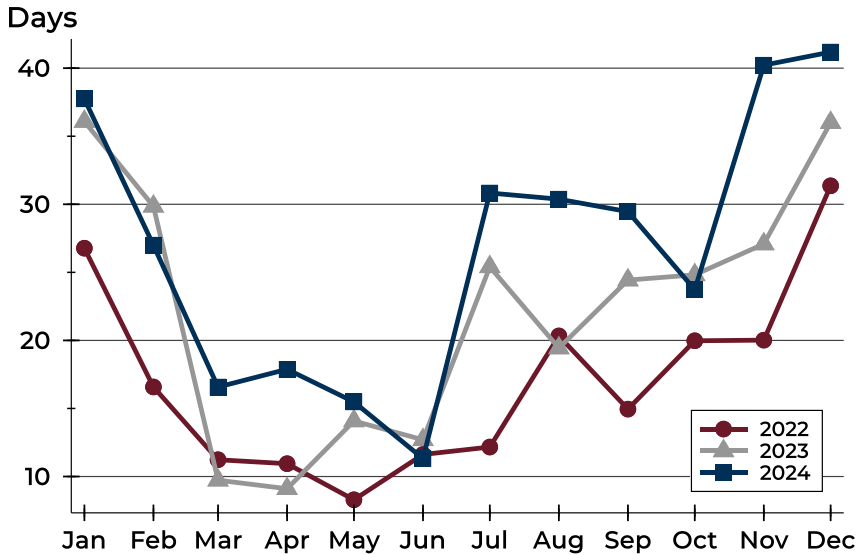


Month	2022	2023	2024
January	296,700	292,450	298,000
February	294,475	282,250	372,400
March	314,900	294,950	325,000
April	275,000	322,500	319,700
May	289,900	312,450	300,000
June	275,000	267,000	325,000
July	280,000	309,000	299,900
August	299,900	310,000	350,000
September	280,000	309,900	305,500
October	270,000	319,000	324,950
November	290,000	282,500	309,450
December	259,900	280,000	289,900



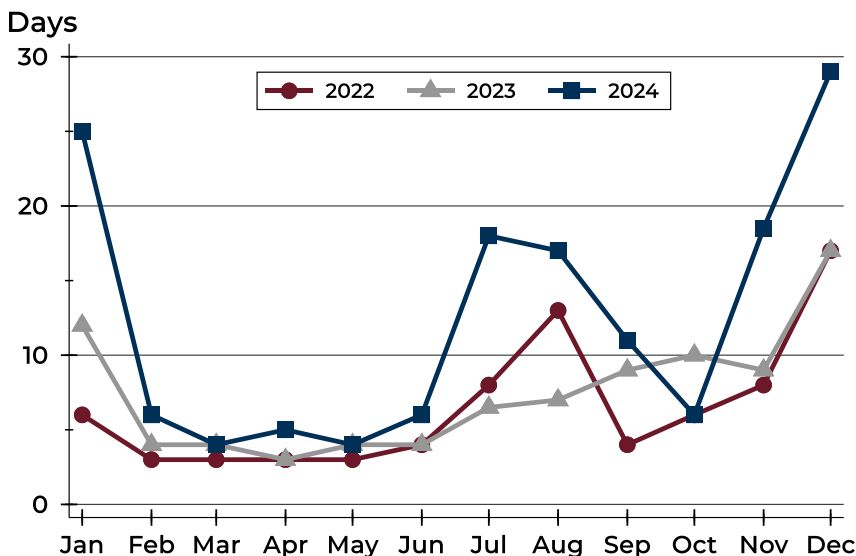
City of Lawrence Contracts Written Analysis

Average DOM



Month	2022	2023	2024
January	27	36	38
February	17	30	27
March	11	10	17
April	11	9	18
May	8	14	15
June	12	13	11
July	12	25	31
August	20	19	30
September	15	24	29
October	20	25	24
November	20	27	40
December	31	36	41

Median DOM



Month	2022	2023	2024
January	6	12	25
February	3	4	6
March	3	4	4
April	3	3	5
May	3	4	4
June	4	4	6
July	8	7	18
August	13	7	17
September	4	9	11
October	6	10	6
November	8	9	19
December	17	17	29



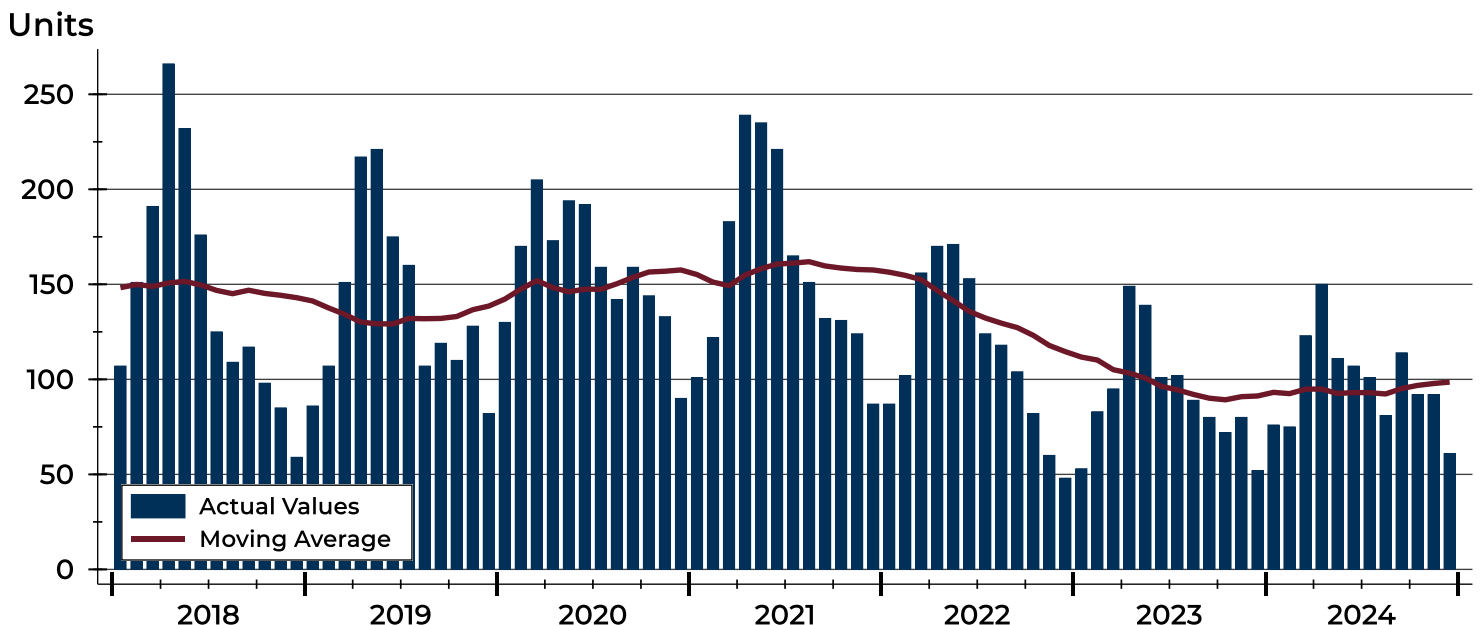
City of Lawrence Pending Contracts Analysis

Summary Statistics for Pending Contracts		End of December		
		2024	2023	Change
Pending Contracts		61	52	17.3%
Volume (1,000s)		23,147	16,573	39.7%
Average	List Price	379,455	318,710	19.1%
	Days on Market	42	39	7.7%
	Percent of Original	98.4%	98.2%	0.2%
Median	List Price	324,900	299,950	8.3%
	Days on Market	28	20	40.0%
	Percent of Original	100.0%	100.0%	0.0%

A total of 61 listings in the City of Lawrence had contracts pending at the end of December, up from 52 contracts pending at the end of December 2023.

Pending contracts reflect listings with a contract in place at the end of the month. In contrast, contracts written measures the number of listings put under contract during the month.

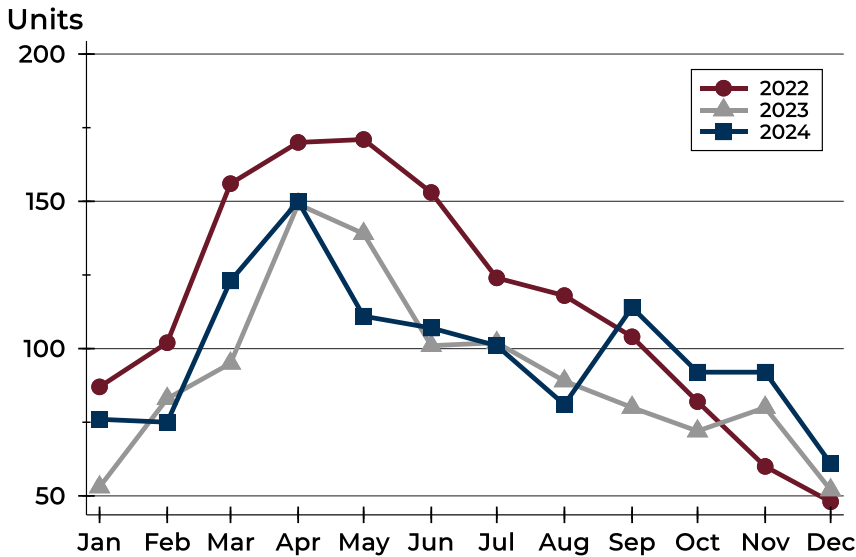
History of Pending Contracts





City of Lawrence Pending Contracts Analysis

Pending Contracts by Month



Month	2022	2023	2024
January	87	53	76
February	102	83	75
March	156	95	123
April	170	149	150
May	171	139	111
June	153	101	107
July	124	102	101
August	118	89	81
September	104	80	114
October	82	72	92
November	60	80	92
December	48	52	61

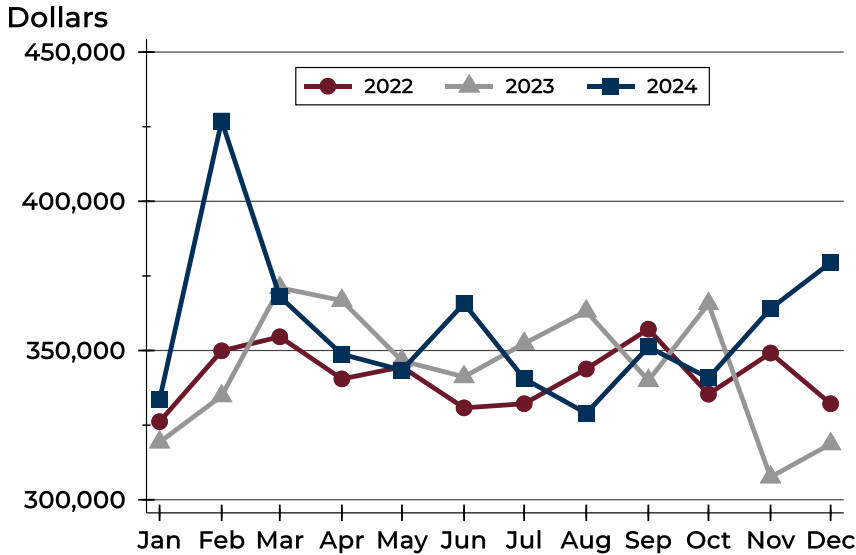
Pending Contracts by Price Range

Price Range	Pending Contracts		List Price		Days on Market		Price as % of Orig.	
	Number	Percent	Average	Median	Avg.	Med.	Avg.	Med.
Below \$50,000	0	0.0%	N/A	N/A	N/A	N/A	N/A	N/A
\$50,000-\$99,999	0	0.0%	N/A	N/A	N/A	N/A	N/A	N/A
\$100,000-\$149,999	5	8.2%	136,969	149,900	45	51	95.6%	100.0%
\$150,000-\$199,999	7	11.5%	171,314	169,900	100	39	99.2%	100.0%
\$200,000-\$249,999	5	8.2%	231,760	224,900	22	8	99.2%	100.0%
\$250,000-\$299,999	12	19.7%	283,942	282,000	38	29	97.6%	100.0%
\$300,000-\$349,999	7	11.5%	331,257	329,900	26	5	99.0%	100.0%
\$350,000-\$399,999	5	8.2%	376,380	374,000	17	7	100.0%	100.0%
\$400,000-\$449,999	5	8.2%	422,160	419,900	30	23	99.3%	100.0%
\$450,000-\$499,999	2	3.3%	486,250	486,250	16	16	100.0%	100.0%
\$500,000-\$599,999	7	11.5%	551,971	555,000	37	17	99.7%	100.0%
\$600,000-\$749,999	4	6.6%	690,950	696,950	57	60	99.5%	100.0%
\$750,000-\$999,999	1	1.6%	785,000	785,000	0	0	100.0%	100.0%
\$1,000,000 and up	1	1.6%	1,999,999	1,999,999	151	151	77.2%	77.2%



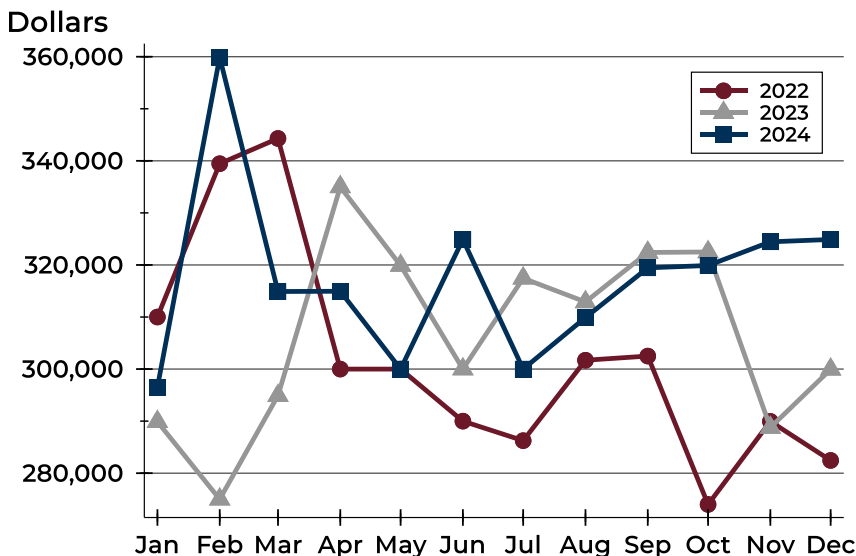
City of Lawrence Pending Contracts Analysis

Average Price



Month	2022	2023	2024
January	326,176	319,303	333,556
February	349,894	334,790	426,894
March	354,598	371,024	368,083
April	340,485	366,757	348,759
May	344,523	346,540	343,428
June	330,793	341,180	365,760
July	332,179	352,339	340,577
August	343,818	363,178	328,967
September	357,180	339,931	351,206
October	335,385	365,678	340,800
November	349,171	307,588	364,048
December	332,166	318,710	379,455

Median Price

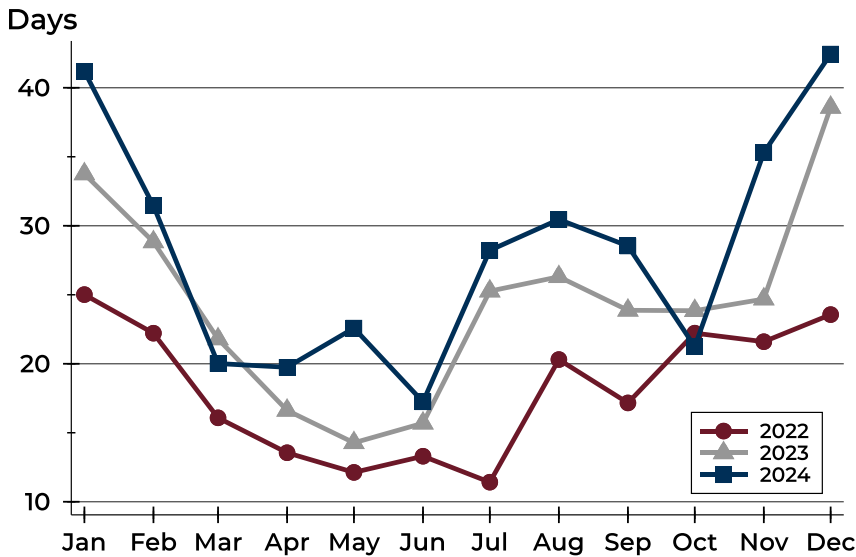


Month	2022	2023	2024
January	310,000	289,900	296,500
February	339,450	275,000	359,900
March	344,300	294,900	314,900
April	300,000	335,000	314,950
May	300,000	319,900	300,000
June	290,000	300,000	324,900
July	286,250	317,450	300,000
August	301,700	312,900	309,900
September	302,500	322,400	319,450
October	274,000	322,500	319,900
November	289,950	288,775	324,450
December	282,450	299,950	324,900



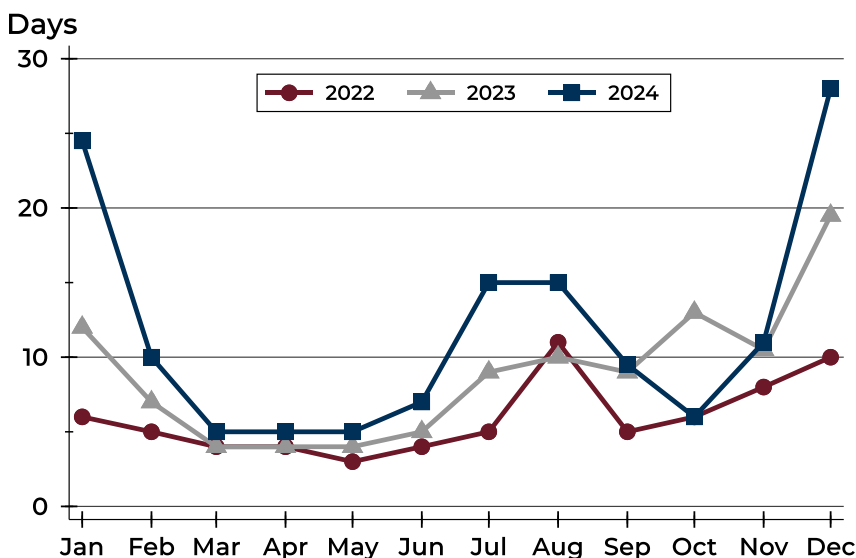
City of Lawrence Pending Contracts Analysis

Average DOM



Month	2022	2023	2024
January	25	34	41
February	22	29	31
March	16	22	20
April	14	17	20
May	12	14	23
June	13	16	17
July	11	25	28
August	20	26	30
September	17	24	29
October	22	24	21
November	22	25	35
December	24	39	42

Median DOM



Month	2022	2023	2024
January	6	12	25
February	5	7	10
March	4	4	5
April	4	4	5
May	3	4	5
June	4	5	7
July	5	9	15
August	11	10	15
September	5	9	10
October	6	13	6
November	8	11	11
December	10	20	28