



**December
2025**

Lawrence MLS Statistics



City of Lawrence Housing Report



Market Overview

City of Lawrence Home Sales Fell in December

Total home sales in the City of Lawrence fell last month to 66 units, compared to 80 units in December 2024. Total sales volume was \$24.9 million, down from a year earlier.

The median sale price in December was \$320,000, up from \$299,950 a year earlier. Homes that sold in December were typically on the market for 21 days and sold for 99.1% of their list prices.

City of Lawrence Active Listings Up at End of December

The total number of active listings in the City of Lawrence at the end of December was 146 units, up from 122 at the same point in 2024. This represents a 1.8 months' supply of homes available for sale. The median list price of homes on the market at the end of December was \$385,000.

During December, a total of 40 contracts were written down from 51 in December 2024. At the end of the month, there were 51 contracts still pending.

Report Contents

- Summary Statistics – Page 2
- Closed Listing Analysis – Page 3
- Active Listings Analysis – Page 7
- Months' Supply Analysis – Page 11
- New Listings Analysis – Page 12
- Contracts Written Analysis – Page 15
- Pending Contracts Analysis – Page 19

Contact Information

Rob Hulse, Executive Vice-President
Lawrence Board of REALTORS®
3838 W. 6th Street (at Monterey)
Lawrence, KS 66049
785-842-1843
Rob@LawrenceRealtor.com
www.LawrenceRealtor.com



**December
2025**

Lawrence MLS Statistics



City of Lawrence Summary Statistics

December MLS Statistics Three-year History		Current Month			Year-to-Date		
		2025	2024	2023	2025	2024	2023
Home Sales Change from prior year		66 -17.5%	80 8.1%	74 51.0%	1,000 4.4%	958 5.3%	910 -20.7%
Active Listings Change from prior year		146 19.7%	122 -10.3%	136 34.7%	N/A	N/A	N/A
Months' Supply Change from prior year		1.8 20.0%	1.5 -16.7%	1.8 63.6%	N/A	N/A	N/A
New Listings Change from prior year		57 26.7%	45 -15.1%	53 -3.6%	1,240 -2.6%	1,273 8.9%	1,169 -12.2%
Contracts Written Change from prior year		40 -21.6%	51 15.9%	44 10.0%	984 1.9%	966 6.4%	908 -18.2%
Pending Contracts Change from prior year		51 -16.4%	61 17.3%	52 8.3%	N/A	N/A	N/A
Sales Volume (1,000s) Change from prior year		24,880 -5.6%	26,347 21.4%	21,710 30.3%	370,216 12.1%	330,313 7.6%	307,043 -18.6%
Average	Sale Price Change from prior year	376,963 14.5%	329,339 12.3%	293,378 -13.7%	370,216 7.4%	344,794 2.2%	337,410 2.6%
	List Price of Actives Change from prior year	456,965 14.7%	398,546 7.7%	370,118 7.0%	N/A	N/A	N/A
	Days on Market Change from prior year	39 18.2%	33 32.0%	25 -3.8%	26 4.0%	25 31.6%	19 26.7%
	Percent of List Change from prior year	98.1% -0.3%	98.4% 0.0%	98.4% 0.2%	99.2% 0.1%	99.1% -1.2%	100.3% -1.0%
	Percent of Original Change from prior year	97.2% 0.8%	96.4% -0.9%	97.3% 1.2%	98.1% -0.1%	98.2% -1.4%	99.6% -0.9%
Median	Sale Price Change from prior year	320,000 6.7%	299,950 10.6%	271,250 -5.5%	320,000 1.6%	315,000 5.0%	300,000 3.4%
	List Price of Actives Change from prior year	385,000 8.5%	355,000 9.6%	324,000 1.3%	N/A	N/A	N/A
	Days on Market Change from prior year	21 23.5%	17 112.5%	8 14.3%	8 0.0%	8 60.0%	5 25.0%
	Percent of List Change from prior year	99.1% 0.0%	99.1% -0.9%	100.0% 0.0%	100.0% 0.0%	100.0% 0.0%	100.0% 0.0%
	Percent of Original Change from prior year	98.2% 0.2%	98.0% -2.0%	100.0% 0.0%	99.9% -0.1%	100.0% 0.0%	100.0% 0.0%

Note: Year-to-date statistics cannot be calculated for Active Listings, Months' Supply and Pending Contracts.



December
2025

Lawrence MLS Statistics



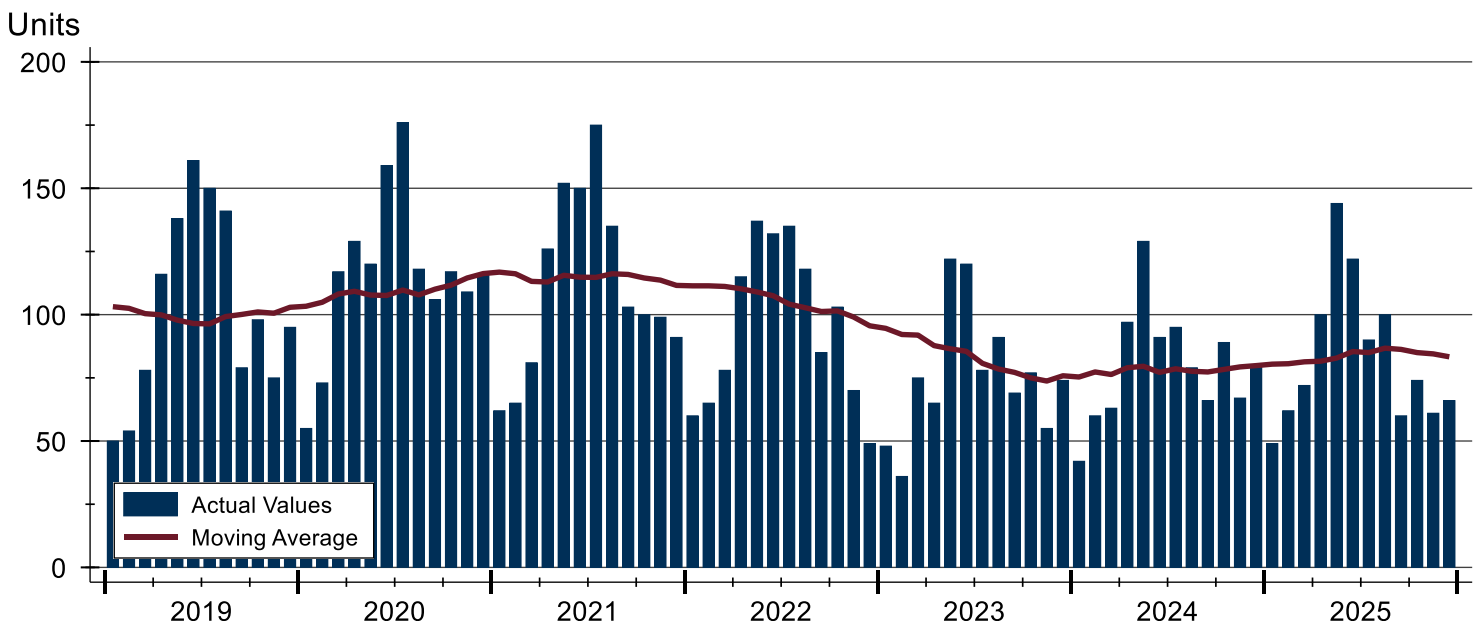
City of Lawrence Closed Listings Analysis

Summary Statistics for Closed Listings		December 2024			Year-to-Date 2025		
		2025	2024	Change	2025	2024	Change
Closed Listings		66	80	-17.5%	1,000	958	4.4%
Volume (1,000s)		24,880	26,347	-5.6%	370,216	330,313	12.1%
Months' Supply		1.8	1.5	20.0%	N/A	N/A	N/A
Average	Sale Price	376,963	329,339	14.5%	370,216	344,794	7.4%
	Days on Market	39	33	18.2%	26	25	4.0%
	Percent of List	98.1%	98.4%	-0.3%	99.2%	99.1%	0.1%
	Percent of Original	97.2%	96.4%	0.8%	98.1%	98.2%	-0.1%
Median	Sale Price	320,000	299,950	6.7%	320,000	315,000	1.6%
	Days on Market	21	17	23.5%	8	8	0.0%
	Percent of List	99.1%	99.1%	0.0%	100.0%	100.0%	0.0%
	Percent of Original	98.2%	98.0%	0.2%	99.9%	100.0%	-0.1%

A total of 66 homes sold in the City of Lawrence in December, down from 80 units in December 2024. Total sales volume fell to \$24.9 million compared to \$26.3 million in the previous year.

The median sales price in December was \$320,000, up 6.7% compared to the prior year. Median days on market was 21 days, up from 17 days in November, and up from 16 in December 2024.

History of Closed Listings





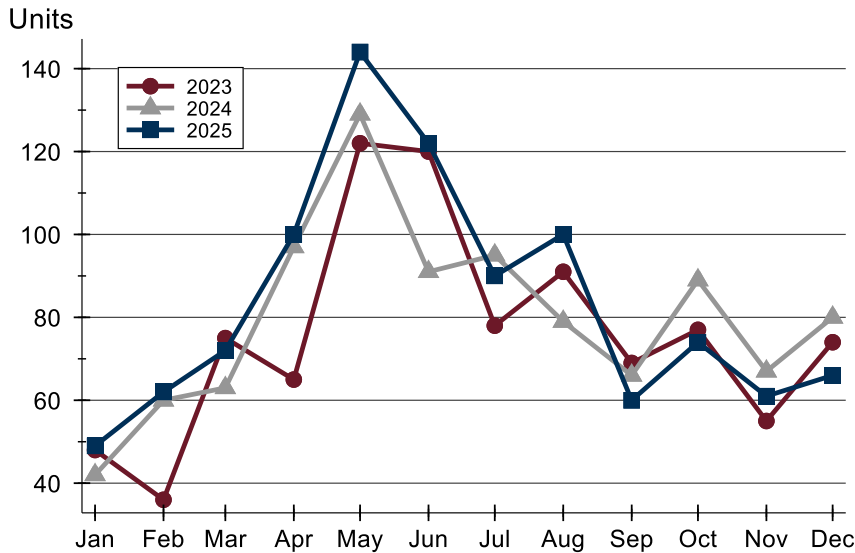
**December
2025**

Lawrence MLS Statistics



City of Lawrence Closed Listings Analysis

Closed Listings by Month



Month	2023	2024	2025
January	48	42	49
February	36	60	62
March	75	63	72
April	65	97	100
May	122	129	144
June	120	91	122
July	78	95	90
August	91	79	100
September	69	66	60
October	77	89	74
November	55	67	61
December	74	80	66

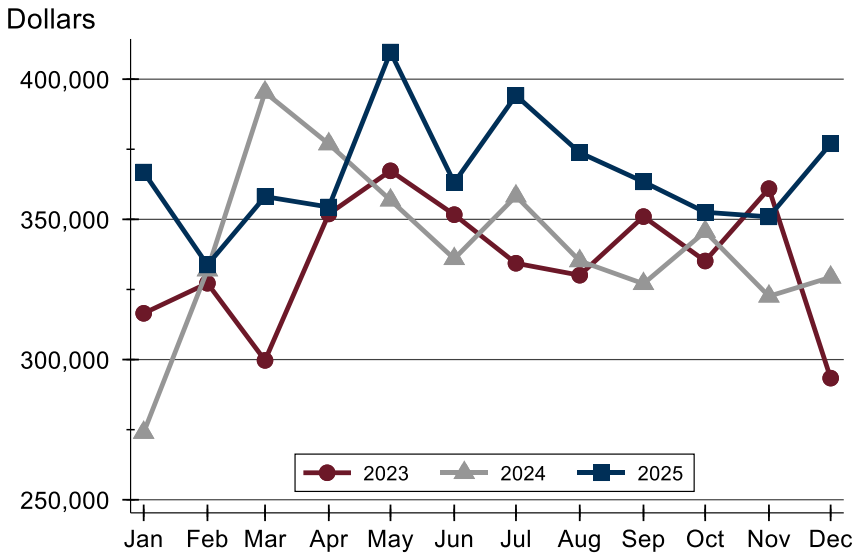
Closed Listings by Price Range

Price Range	Sales Number	Percent	Months' Supply	Sale Price Average	Median	Days on Market Avg.	Med.	Price as % of List Avg.	Med.	Price as % of Orig. Avg.	Med.
Below \$50,000	0	0.0%	N/A	N/A	N/A	N/A	N/A	N/A	N/A	N/A	N/A
\$50,000-\$99,999	0	0.0%	N/A	N/A	N/A	N/A	N/A	N/A	N/A	N/A	N/A
\$100,000-\$149,999	3	4.5%	2.3	122,333	125,000	65	15	98.5%	100.0%	94.9%	95.6%
\$150,000-\$199,999	2	3.0%	1.7	174,500	174,500	4	4	100.0%	100.0%	100.0%	100.0%
\$200,000-\$249,999	9	13.6%	1.1	229,444	235,000	29	21	94.7%	96.0%	92.1%	95.3%
\$250,000-\$299,999	16	24.2%	1.1	274,113	273,825	58	36	98.7%	100.0%	97.7%	99.6%
\$300,000-\$349,999	8	12.1%	1.0	330,163	326,000	29	25	98.0%	98.1%	97.9%	98.1%
\$350,000-\$399,999	9	13.6%	1.8	379,544	382,000	18	4	100.0%	99.1%	99.5%	98.7%
\$400,000-\$449,999	2	3.0%	0.6	409,500	409,500	18	18	98.8%	98.8%	93.2%	93.2%
\$450,000-\$499,999	3	4.5%	2.5	474,300	483,900	11	8	100.5%	100.0%	100.5%	100.0%
\$500,000-\$599,999	7	10.6%	1.6	564,571	570,000	30	20	97.9%	98.3%	96.8%	96.2%
\$600,000-\$749,999	5	7.6%	6.2	675,330	697,650	32	3	98.8%	99.7%	98.8%	99.7%
\$750,000-\$999,999	1	1.5%	2.4	845,000	845,000	155	155	96.0%	96.0%	93.9%	93.9%
\$1,000,000 and up	1	1.5%	8.4	1,240,000	1,240,000	176	176	88.6%	88.6%	107.8%	107.8%



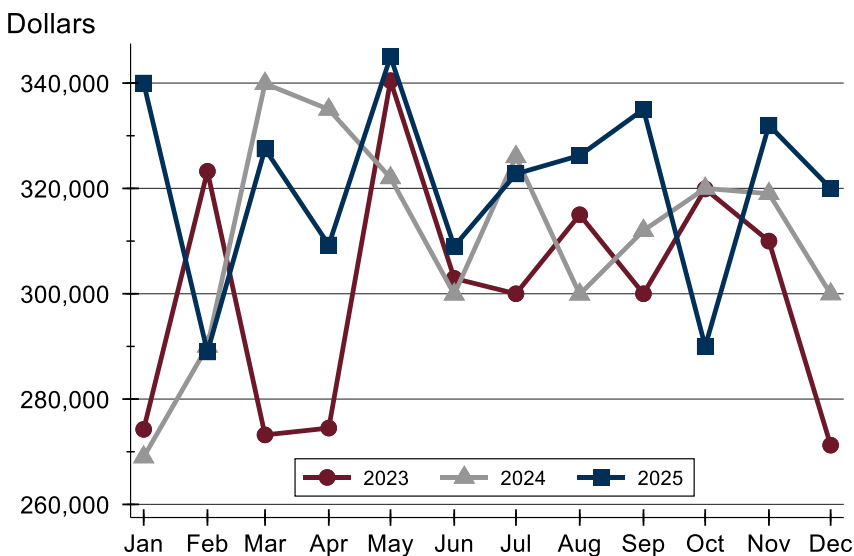
City of Lawrence Closed Listings Analysis

Average Price



Month	2023	2024	2025
January	316,490	273,973	366,863
February	327,216	331,921	333,742
March	299,705	395,294	358,114
April	351,932	376,885	354,396
May	367,315	356,843	409,665
June	351,680	335,946	363,112
July	334,347	358,291	394,198
August	330,085	335,185	373,798
September	350,988	327,043	363,390
October	335,150	345,662	352,531
November	360,959	322,575	350,902
December	293,378	329,339	376,963

Median Price



Month	2023	2024	2025
January	274,250	269,000	340,000
February	323,250	290,000	288,950
March	273,200	339,900	327,500
April	274,500	335,000	309,253
May	340,450	322,000	345,000
June	302,915	299,900	309,000
July	300,000	326,000	322,750
August	315,000	299,900	326,250
September	300,000	312,000	335,000
October	319,900	320,000	289,999
November	310,000	319,000	332,000
December	271,250	299,950	320,000



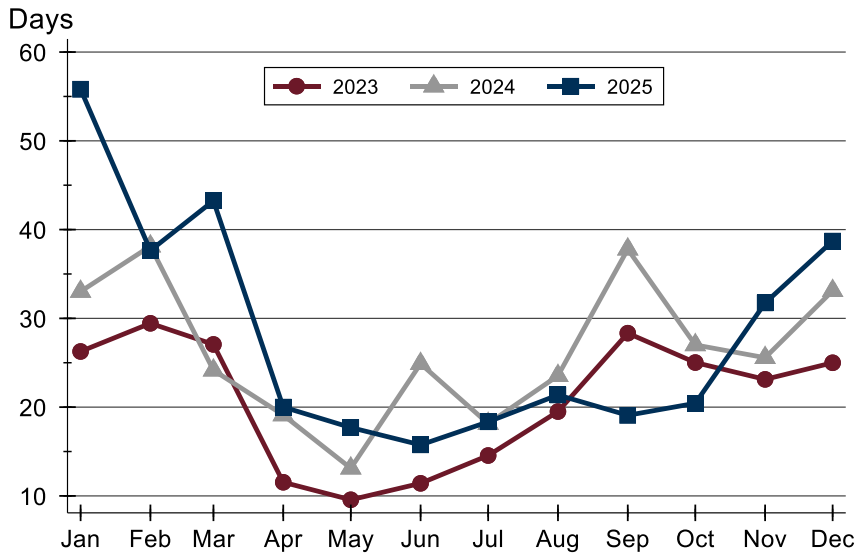
**December
2025**

Lawrence MLS Statistics



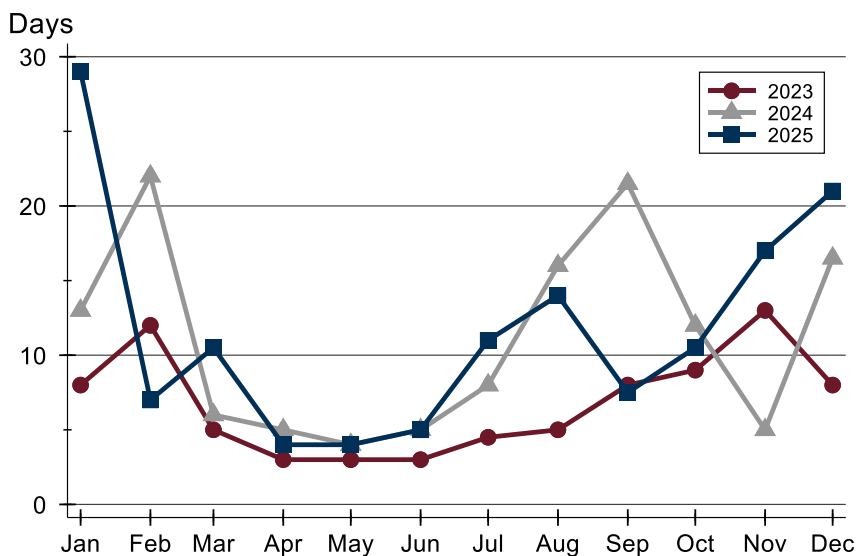
City of Lawrence Closed Listings Analysis

Average DOM



Month	2023	2024	2025
January	26	33	56
February	29	38	38
March	27	24	43
April	12	19	20
May	10	13	18
June	11	25	16
July	15	18	18
August	20	24	21
September	28	38	19
October	25	27	20
November	23	26	32
December	25	33	39

Median DOM



Month	2023	2024	2025
January	8	13	29
February	12	22	7
March	5	6	11
April	3	5	4
May	3	4	4
June	3	5	5
July	5	8	11
August	5	16	14
September	8	22	8
October	9	12	11
November	13	5	17
December	8	17	21



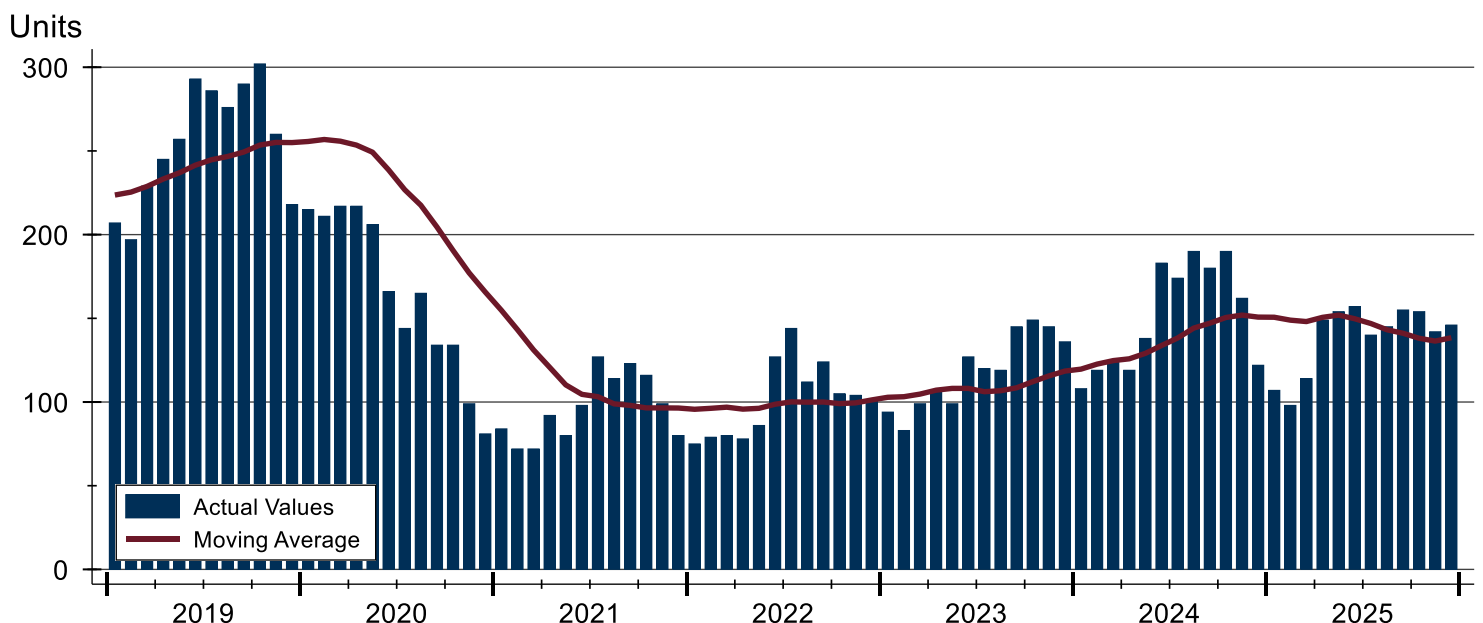
City of Lawrence Active Listings Analysis

Summary Statistics for Active Listings		2025	End of December 2024	Change
Active Listings		146	122	19.7%
Volume (1,000s)		66,717	48,623	37.2%
Months' Supply		1.8	1.5	20.0%
Average	List Price	456,965	398,546	14.7%
	Days on Market	49	83	-41.0%
	Percent of Original	98.3%	98.1%	0.2%
Median	List Price	385,000	355,000	8.5%
	Days on Market	22	70	-68.6%
	Percent of Original	100.0%	100.0%	0.0%

A total of 146 homes were available for sale in the City of Lawrence at the end of December. This represents a 1.8 months' supply of active listings.

The median list price of homes on the market at the end of December was \$385,000, up 8.5% from 2024. The typical time on market for active listings was 22 days, down from 70 days a year earlier.

History of Active Listings





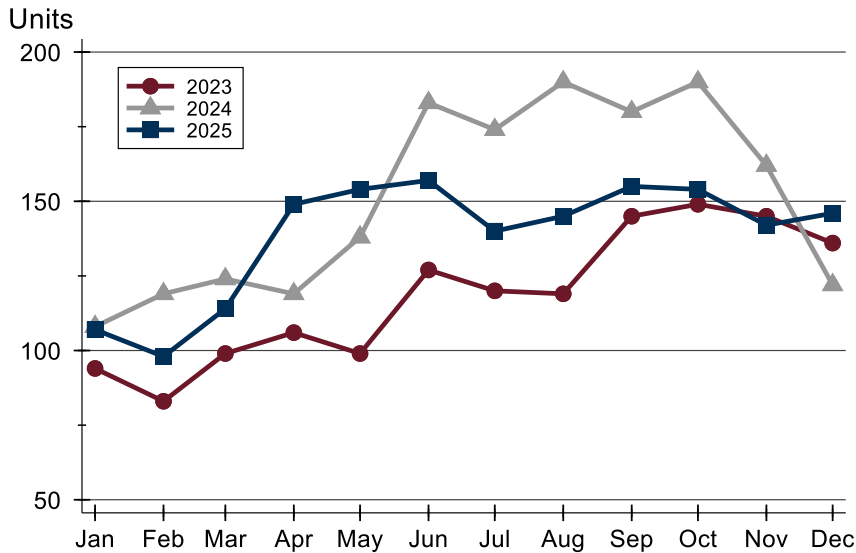
**December
2025**

Lawrence MLS Statistics



City of Lawrence Active Listings Analysis

Active Listings by Month



Month	2023	2024	2025
January	94	108	107
February	83	119	98
March	99	124	114
April	106	119	149
May	99	138	154
June	127	183	157
July	120	174	140
August	119	190	145
September	145	180	155
October	149	190	154
November	145	162	142
December	136	122	146

Active Listings by Price Range

Price Range	Active Listings Number	Percent	Months' Supply	List Price Average	Median	Days on Market Avg.	Med.	Price as % of Orig. Avg.	Med.
Below \$50,000	1	0.7%	N/A	3,200	3,200	4	4	100.0%	100.0%
\$50,000-\$99,999	4	2.7%	N/A	84,905	86,725	60	46	92.8%	99.1%
\$100,000-\$149,999	7	4.8%	2.3	125,243	125,900	41	21	95.4%	100.0%
\$150,000-\$199,999	8	5.5%	1.7	186,581	192,450	50	17	97.4%	100.0%
\$200,000-\$249,999	12	8.2%	1.1	234,133	234,900	59	52	97.7%	100.0%
\$250,000-\$299,999	16	11.0%	1.1	277,213	272,500	40	30	99.2%	100.0%
\$300,000-\$349,999	15	10.3%	1.0	323,460	325,000	32	11	99.1%	100.0%
\$350,000-\$399,999	17	11.6%	1.8	378,124	385,000	30	26	99.0%	100.0%
\$400,000-\$449,999	4	2.7%	0.6	439,675	444,450	73	70	97.3%	97.7%
\$450,000-\$499,999	11	7.5%	2.5	471,664	474,900	27	18	99.0%	100.0%
\$500,000-\$599,999	11	7.5%	1.6	550,855	549,000	70	60	98.1%	100.0%
\$600,000-\$749,999	28	19.2%	6.2	658,050	649,000	38	19	99.4%	100.0%
\$750,000-\$999,999	5	3.4%	2.4	856,980	850,000	45	7	99.9%	100.0%
\$1,000,000 and up	7	4.8%	8.4	1,394,714	1,395,000	183	71	94.3%	93.9%



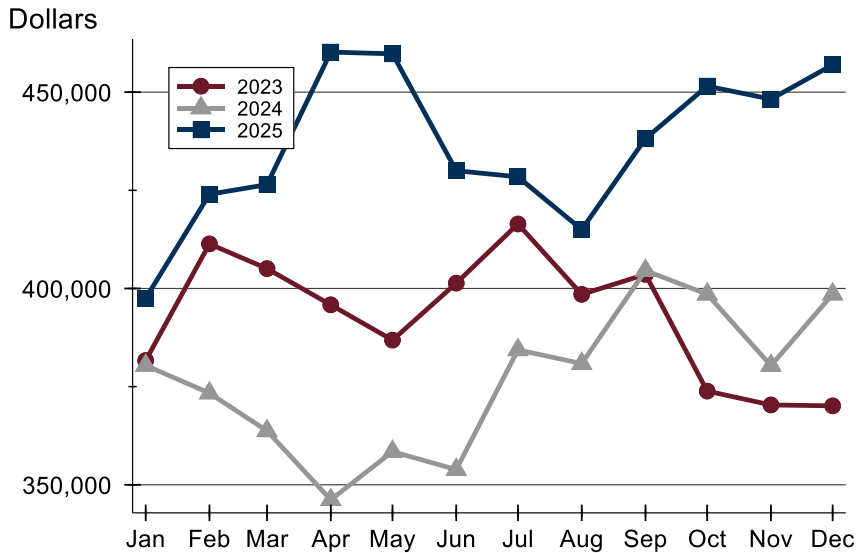
**December
2025**

Lawrence MLS Statistics



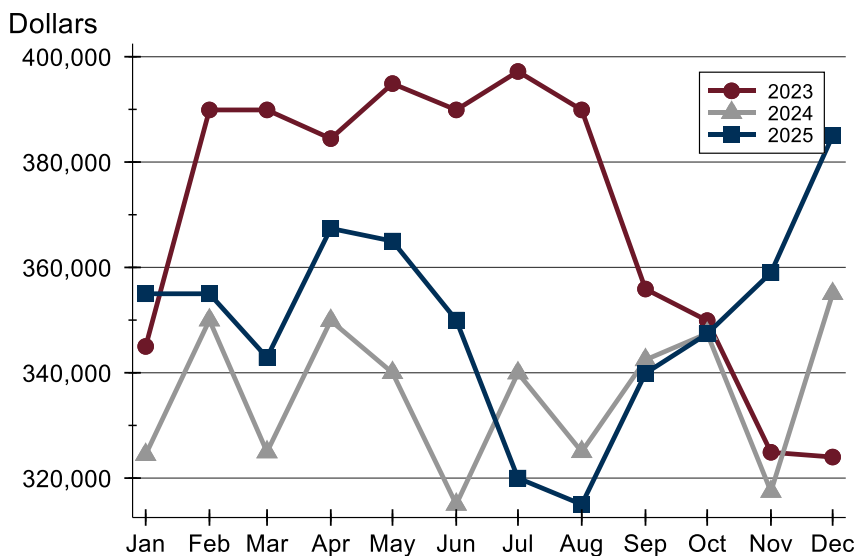
City of Lawrence Active Listings Analysis

Average Price



Month	2023	2024	2025
January	381,662	380,405	397,492
February	411,359	373,361	423,998
March	405,067	363,744	426,466
April	395,842	346,189	460,216
May	386,853	358,466	459,766
June	401,362	353,875	430,003
July	416,435	384,366	428,439
August	398,505	380,883	415,012
September	403,598	404,570	438,170
October	373,865	398,530	451,550
November	370,337	380,374	448,229
December	370,118	398,546	456,965

Median Price

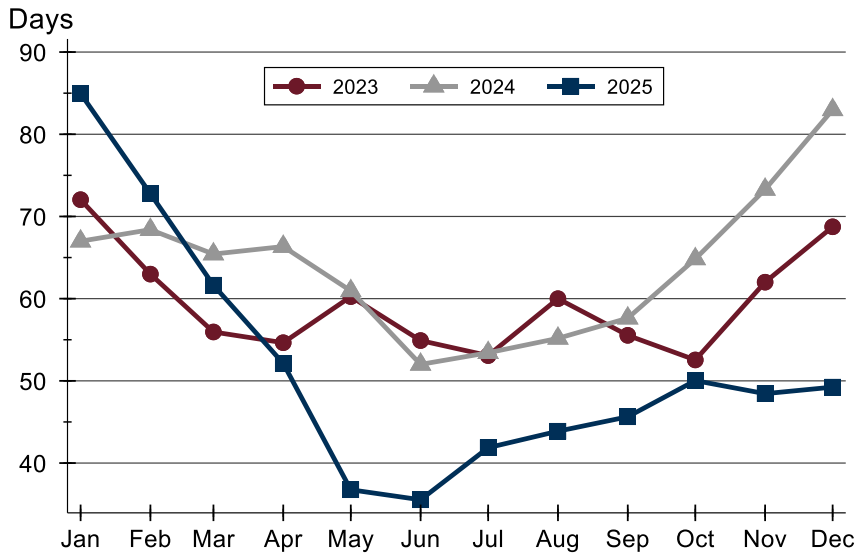


Month	2023	2024	2025
January	345,000	324,450	355,000
February	389,900	350,000	355,000
March	389,900	324,950	342,900
April	384,450	349,900	367,400
May	394,900	340,000	365,000
June	389,900	315,000	350,000
July	397,200	339,950	320,000
August	389,900	325,000	315,000
September	355,900	342,450	339,900
October	349,900	347,450	347,400
November	324,900	317,450	359,000
December	324,000	355,000	385,000



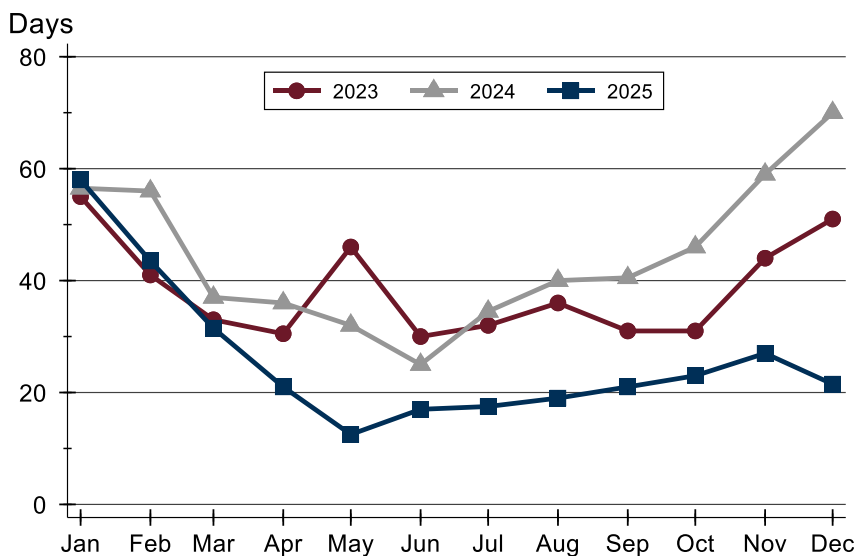
City of Lawrence Active Listings Analysis

Average DOM



Month	2023	2024	2025
January	72	67	85
February	63	68	73
March	56	65	62
April	55	66	52
May	60	61	37
June	55	52	36
July	53	53	42
August	60	55	44
September	56	58	46
October	53	65	50
November	62	73	48
December	69	83	49

Median DOM

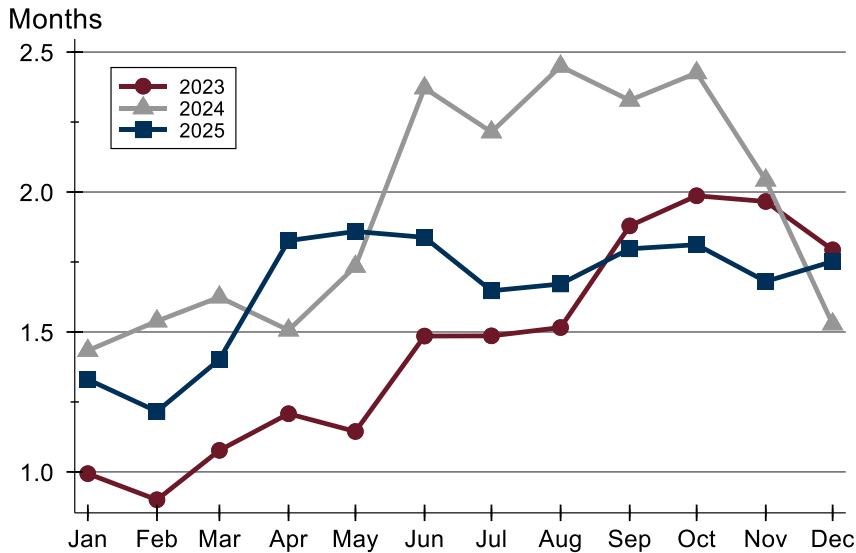


Month	2023	2024	2025
January	55	57	58
February	41	56	44
March	33	37	32
April	31	36	21
May	46	32	13
June	30	25	17
July	32	35	18
August	36	40	19
September	31	41	21
October	31	46	23
November	44	59	27
December	51	70	22



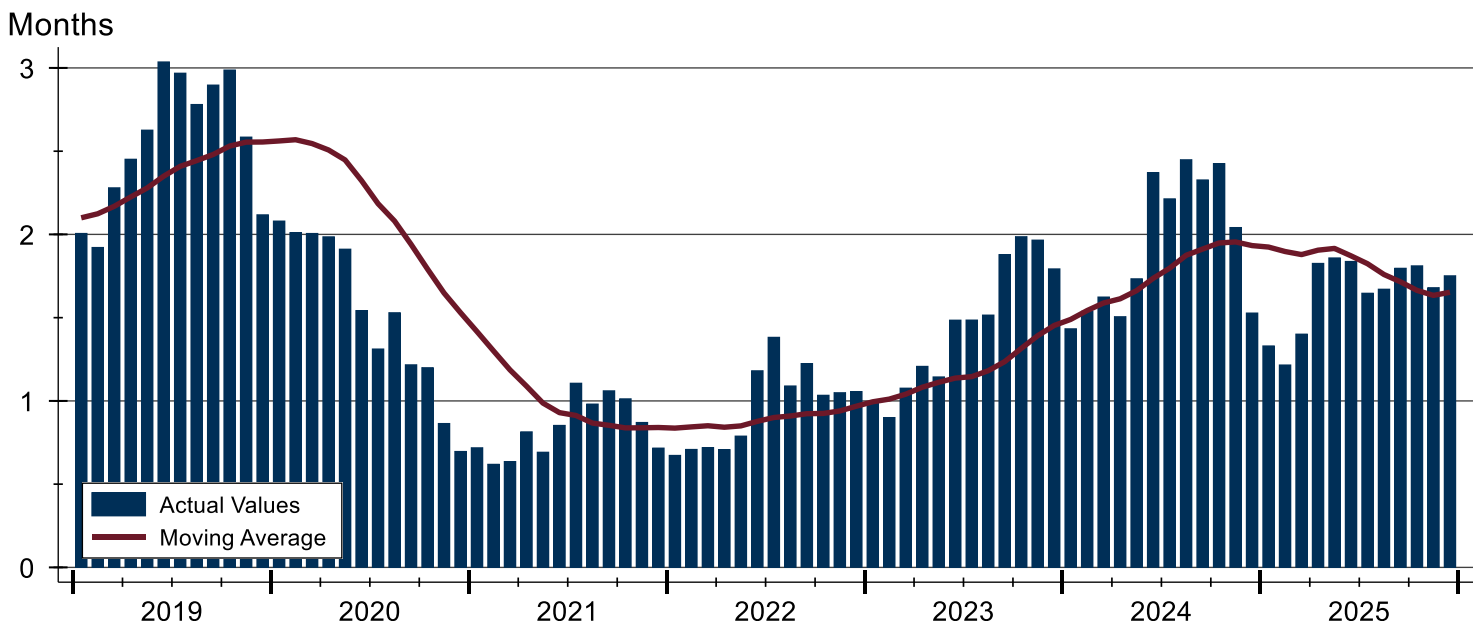
City of Lawrence Months' Supply Analysis

Months' Supply by Month



Month	2023	2024	2025
January	1.0	1.4	1.3
February	0.9	1.5	1.2
March	1.1	1.6	1.4
April	1.2	1.5	1.8
May	1.1	1.7	1.9
June	1.5	2.4	1.8
July	1.5	2.2	1.6
August	1.5	2.4	1.7
September	1.9	2.3	1.8
October	2.0	2.4	1.8
November	2.0	2.0	1.7
December	1.8	1.5	1.8

History of Month's Supply





**December
2025**

Lawrence MLS Statistics



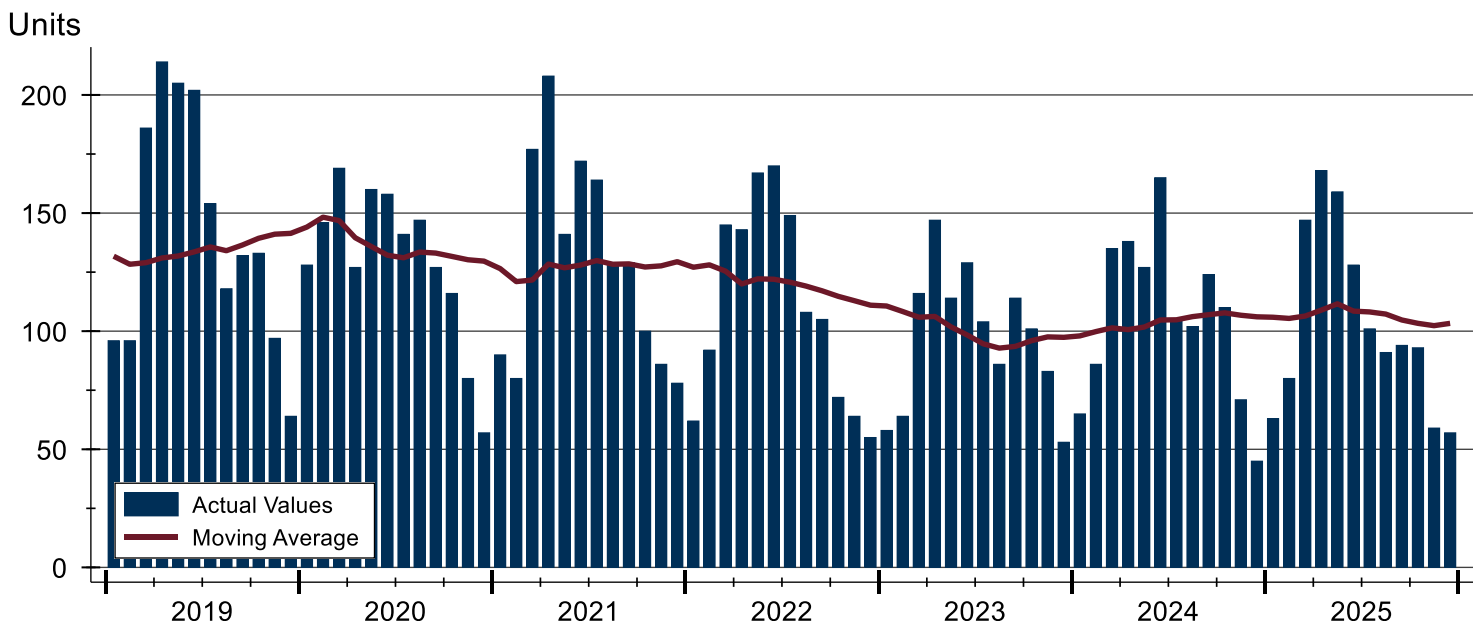
City of Lawrence New Listings Analysis

Summary Statistics for New Listings		2025	December 2024	Change
Current Month	New Listings	57	45	26.7%
	Volume (1,000s)	24,417	16,837	45.0%
	Average List Price	428,366	374,167	14.5%
	Median List Price	371,000	336,000	10.4%
Year-to-Date	New Listings	1,240	1,273	-2.6%
	Volume (1,000s)	484,788	452,284	7.2%
	Average List Price	390,958	355,290	10.0%
	Median List Price	325,000	319,000	1.9%

A total of 57 new listings were added in the City of Lawrence during December, up 26.7% from the same month in 2024. Year-to-date the City of Lawrence has seen 1,240 new listings.

The median list price of these homes was \$371,000 up from \$336,000 in 2024.

History of New Listings





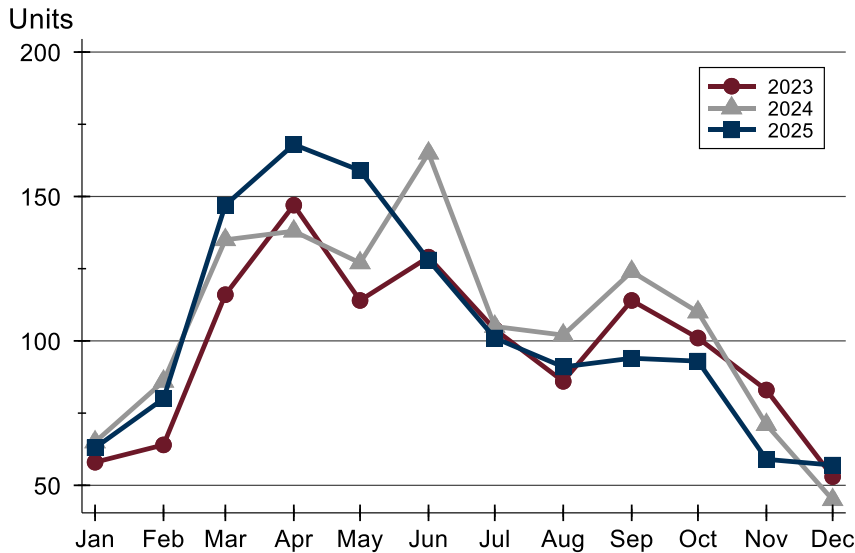
**December
2025**

Lawrence MLS Statistics



City of Lawrence New Listings Analysis

New Listings by Month



Month	2023	2024	2025
January	58	65	63
February	64	86	80
March	116	135	147
April	147	138	168
May	114	127	159
June	129	165	128
July	104	105	101
August	86	102	91
September	114	124	94
October	101	110	93
November	83	71	59
December	53	45	57

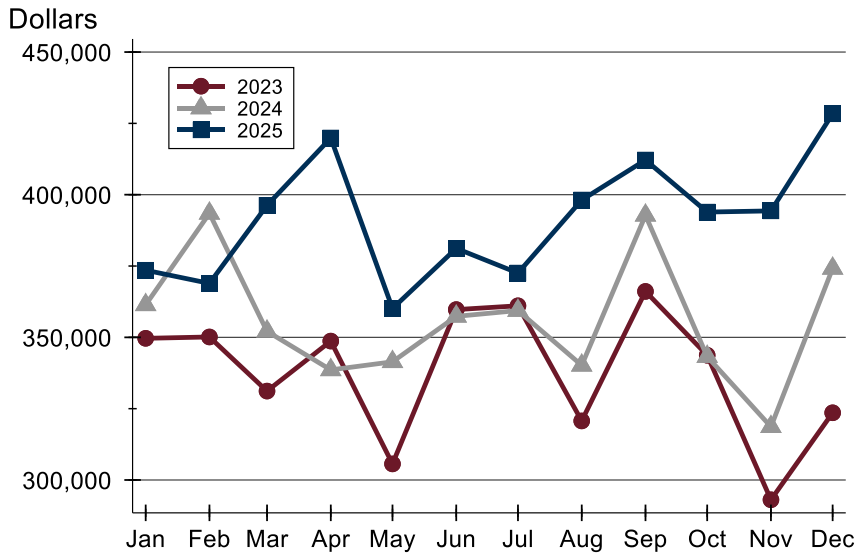
New Listings by Price Range

Price Range	New Listings Number	Percent	List Price Average	Median	Days on Market Avg.	Med.	Price as % of Orig. Avg.	Med.
Below \$50,000	0	0.0%	N/A	N/A	N/A	N/A	N/A	N/A
\$50,000-\$99,999	0	0.0%	N/A	N/A	N/A	N/A	N/A	N/A
\$100,000-\$149,999	2	3.5%	137,450	137,450	3	3	100.0%	100.0%
\$150,000-\$199,999	4	7.0%	186,200	187,450	17	18	100.0%	100.0%
\$200,000-\$249,999	5	8.8%	233,540	235,000	5	4	99.6%	100.0%
\$250,000-\$299,999	7	12.3%	265,892	265,000	14	17	99.7%	100.0%
\$300,000-\$349,999	8	14.0%	321,463	317,500	9	7	100.0%	100.0%
\$350,000-\$399,999	6	10.5%	375,117	373,000	8	4	99.7%	100.0%
\$400,000-\$449,999	0	0.0%	N/A	N/A	N/A	N/A	N/A	N/A
\$450,000-\$499,999	3	5.3%	461,667	465,000	7	5	100.0%	100.0%
\$500,000-\$599,999	3	5.3%	556,267	539,900	21	29	100.0%	100.0%
\$600,000-\$749,999	18	31.6%	646,778	649,000	18	19	100.0%	100.0%
\$750,000-\$999,999	1	1.8%	850,000	850,000	5	5	100.0%	100.0%
\$1,000,000 and up	0	0.0%	N/A	N/A	N/A	N/A	N/A	N/A



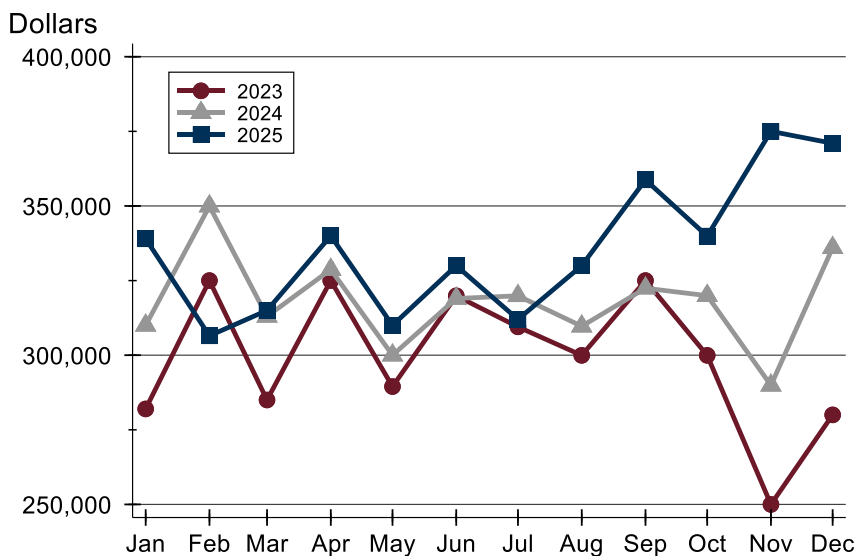
City of Lawrence New Listings Analysis

Average Price



Month	2023	2024	2025
January	349,665	361,397	373,534
February	350,138	393,460	368,919
March	331,174	352,127	396,268
April	348,694	338,599	419,880
May	305,637	341,437	360,126
June	359,731	357,359	381,194
July	361,069	359,406	372,545
August	320,710	340,199	398,141
September	366,108	392,773	412,165
October	343,722	343,271	393,912
November	293,070	318,672	394,330
December	323,562	374,167	428,366

Median Price



Month	2023	2024	2025
January	282,000	310,000	339,000
February	325,000	349,950	306,500
March	285,000	313,000	315,000
April	325,000	328,700	340,000
May	289,500	299,999	310,000
June	319,900	319,000	330,000
July	309,500	319,900	312,000
August	299,950	309,700	330,000
September	325,000	322,450	358,750
October	299,950	319,950	339,900
November	250,000	289,900	375,000
December	280,000	336,000	371,000



**December
2025**

Lawrence MLS Statistics



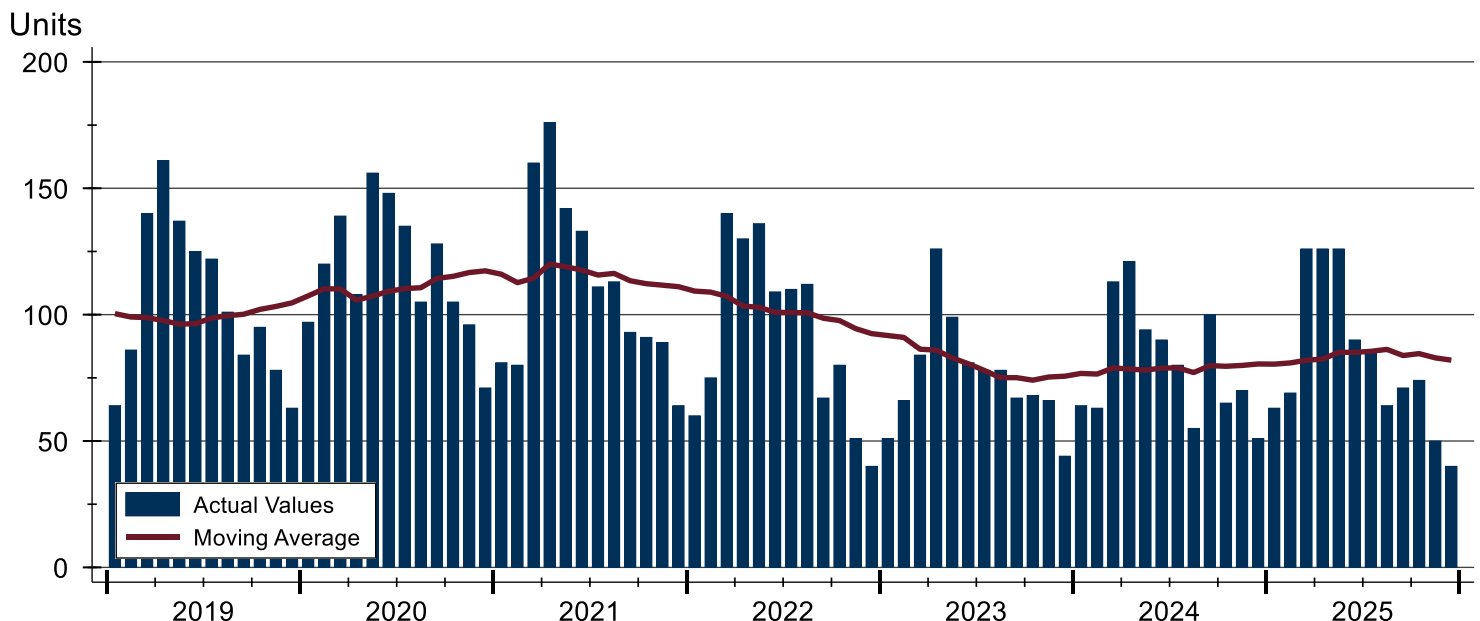
City of Lawrence Contracts Written Analysis

Summary Statistics for Contracts Written		December			Year-to-Date		
		2025	2024	Change	2025	2024	Change
Contracts Written		40	51	-21.6%	984	966	1.9%
Volume (1,000s)		14,694	18,019	-18.5%	368,954	340,923	8.2%
Average	Sale Price	367,351	353,308	4.0%	374,953	352,923	6.2%
	Days on Market	27	41	-34.1%	24	26	-7.7%
	Percent of Original	98.5%	96.0%	2.6%	98.3%	98.2%	0.1%
Median	Sale Price	317,450	289,900	9.5%	324,900	315,000	3.1%
	Days on Market	15	28	-46.4%	8	8	0.0%
	Percent of Original	100.0%	97.7%	2.4%	100.0%	100.0%	0.0%

A total of 40 contracts for sale were written in the City of Lawrence during the month of December, down from 51 in 2024. The median list price of these homes was \$317,450, up from \$289,900 the prior year.

Half of the homes that went under contract in December were on the market less than 14 days, compared to 28 days in December 2024.

History of Contracts Written





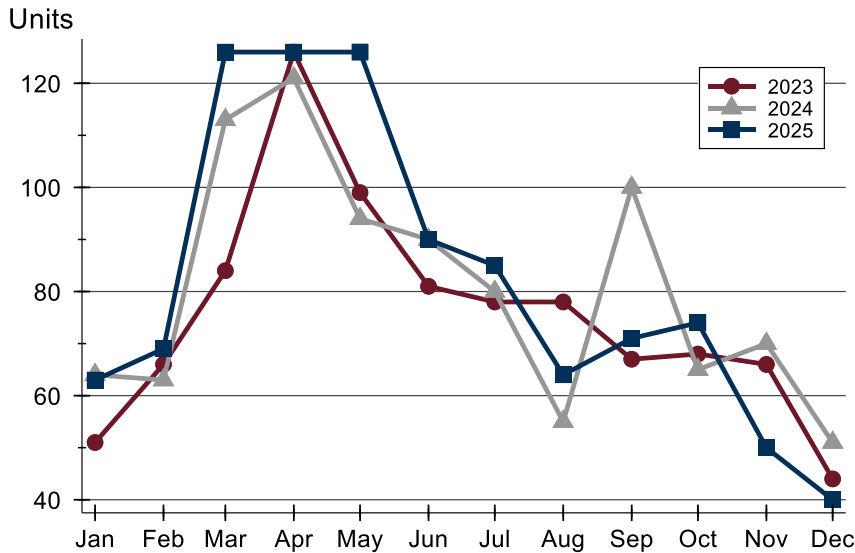
**December
2025**

Lawrence MLS Statistics



City of Lawrence Contracts Written Analysis

Contracts Written by Month



Month	2023	2024	2025
January	51	64	63
February	66	63	69
March	84	113	126
April	126	121	126
May	99	94	126
June	81	90	90
July	78	80	85
August	78	55	64
September	67	100	71
October	68	65	74
November	66	70	50
December	44	51	40

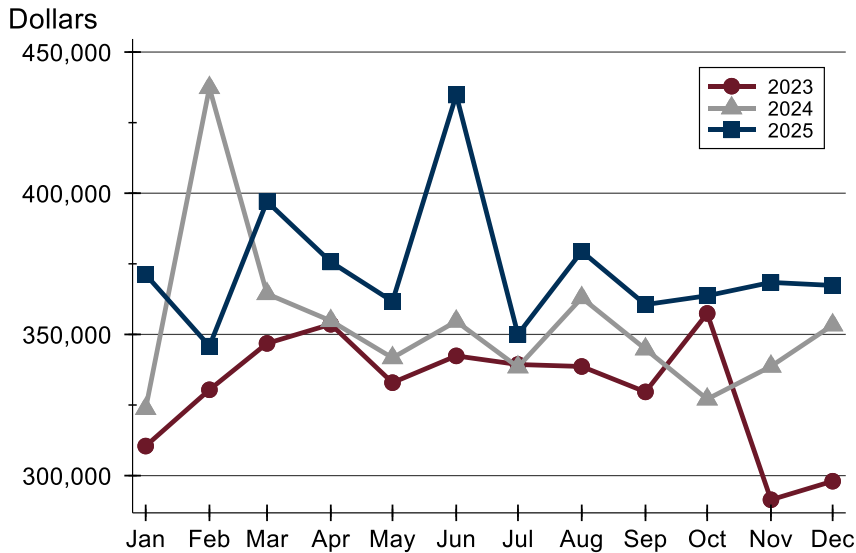
Contracts Written by Price Range

Price Range	Contracts Written Number	Percent	List Price Average	Median	Days on Market Avg.	Med.	Price as % of Orig. Avg.	Med.
Below \$50,000	0	0.0%	N/A	N/A	N/A	N/A	N/A	N/A
\$50,000-\$99,999	0	0.0%	N/A	N/A	N/A	N/A	N/A	N/A
\$100,000-\$149,999	2	5.0%	137,450	137,450	3	3	100.0%	100.0%
\$150,000-\$199,999	2	5.0%	197,450	197,450	18	18	100.0%	100.0%
\$200,000-\$249,999	4	10.0%	234,450	240,000	3	3	97.5%	99.0%
\$250,000-\$299,999	10	25.0%	269,115	265,000	31	18	97.7%	100.0%
\$300,000-\$349,999	4	10.0%	317,475	317,450	19	17	99.7%	100.0%
\$350,000-\$399,999	7	17.5%	384,229	385,000	19	4	99.5%	100.0%
\$400,000-\$449,999	3	7.5%	424,967	420,000	28	34	95.4%	100.0%
\$450,000-\$499,999	1	2.5%	450,000	450,000	2	2	100.0%	100.0%
\$500,000-\$599,999	4	10.0%	558,975	564,450	28	26	98.2%	98.4%
\$600,000-\$749,999	2	5.0%	687,500	687,500	66	66	100.0%	100.0%
\$750,000-\$999,999	0	0.0%	N/A	N/A	N/A	N/A	N/A	N/A
\$1,000,000 and up	1	2.5%	1,100,000	1,100,000	165	165	100.0%	100.0%



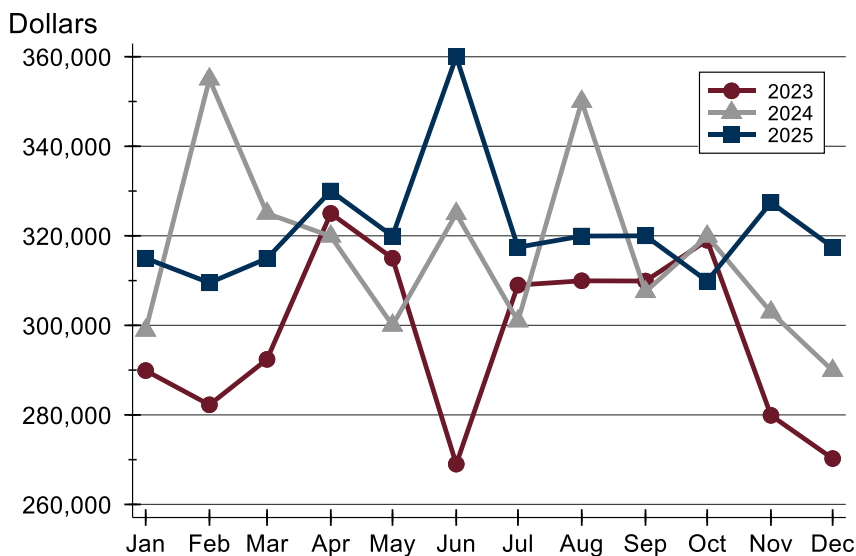
City of Lawrence Contracts Written Analysis

Average Price



Month	2023	2024	2025
January	310,467	323,707	371,215
February	330,402	437,352	345,843
March	346,825	364,385	397,088
April	353,594	354,828	375,675
May	332,913	341,694	361,708
June	342,393	354,642	434,789
July	339,349	338,454	350,006
August	338,645	362,953	379,417
September	329,643	344,812	360,576
October	357,438	327,064	363,710
November	291,443	338,691	368,432
December	298,019	353,308	367,351

Median Price



Month	2023	2024	2025
January	289,900	298,880	315,000
February	282,250	355,000	309,500
March	292,400	325,000	314,950
April	325,000	319,900	330,000
May	315,000	300,000	319,950
June	269,000	324,950	360,000
July	309,000	300,950	317,450
August	309,950	350,000	319,950
September	309,900	307,500	320,000
October	319,000	319,900	309,900
November	279,900	302,950	327,450
December	270,250	289,900	317,450



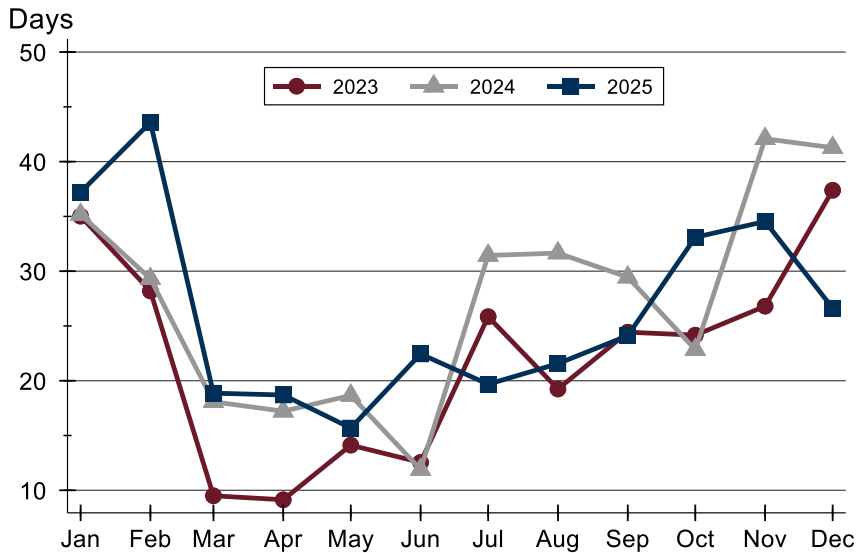
**December
2025**

Lawrence MLS Statistics



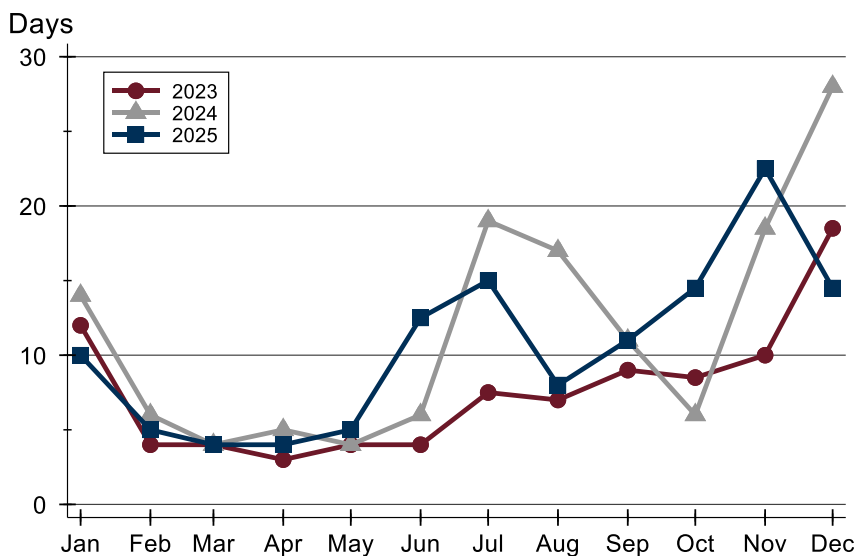
City of Lawrence Contracts Written Analysis

Average DOM



Month	2023	2024	2025
January	35	35	37
February	28	29	44
March	10	18	19
April	9	17	19
May	14	19	16
June	13	12	22
July	26	31	20
August	19	32	22
September	24	29	24
October	24	23	33
November	27	42	35
December	37	41	27

Median DOM



Month	2023	2024	2025
January	12	14	10
February	4	6	5
March	4	4	4
April	3	5	4
May	4	4	5
June	4	6	13
July	8	19	15
August	7	17	8
September	9	11	11
October	9	6	15
November	10	19	23
December	19	28	15



**December
2025**

Lawrence MLS Statistics



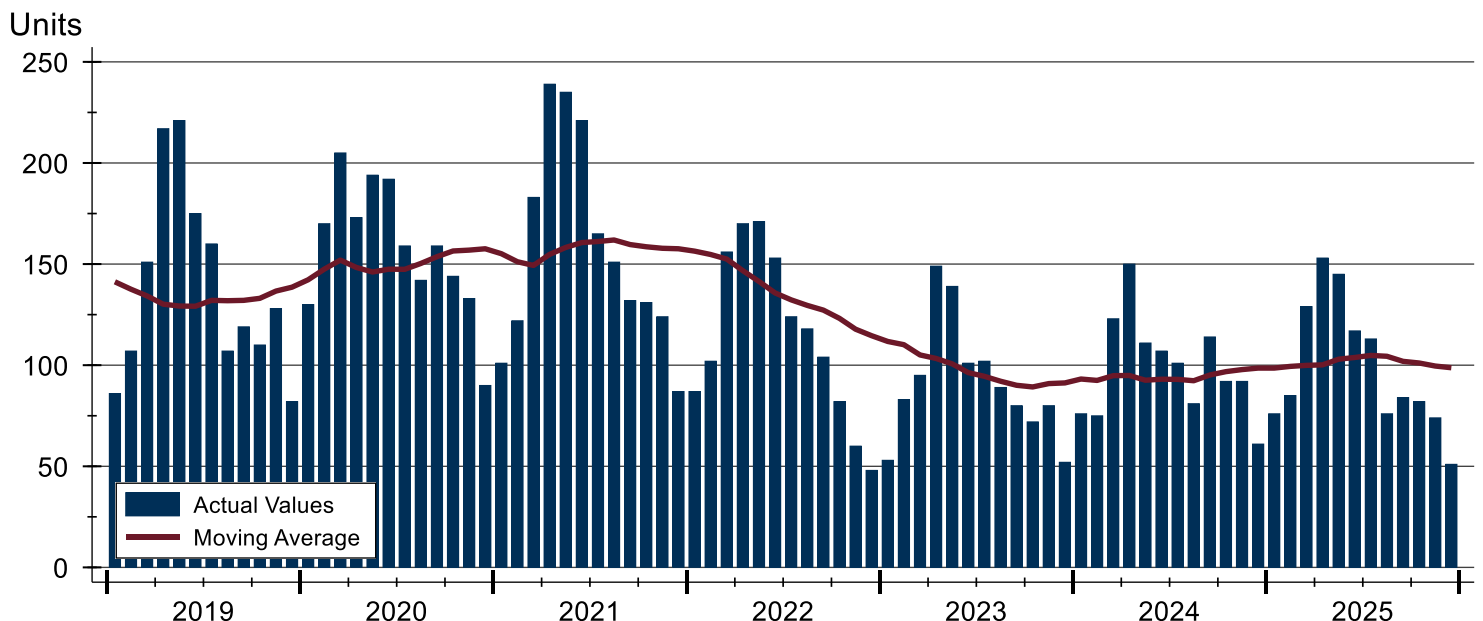
City of Lawrence Pending Contracts Analysis

Summary Statistics for Pending Contracts		End of December		
		2025	2024	Change
Pending Contracts		51	61	-16.4%
Volume (1,000s)		18,595	23,147	-19.7%
Average	List Price	364,610	379,455	-3.9%
	Days on Market	30	42	-28.6%
	Percent of Original	99.0%	98.4%	0.6%
Median	List Price	315,000	324,900	-3.0%
	Days on Market	16	28	-42.9%
	Percent of Original	100.0%	100.0%	0.0%

A total of 51 listings in the City of Lawrence had contracts pending at the end of December, down from 61 contracts pending at the end of December 2024.

Pending contracts reflect listings with a contract in place at the end of the month. In contrast, contracts written measures the number of listings put under contract during the month.

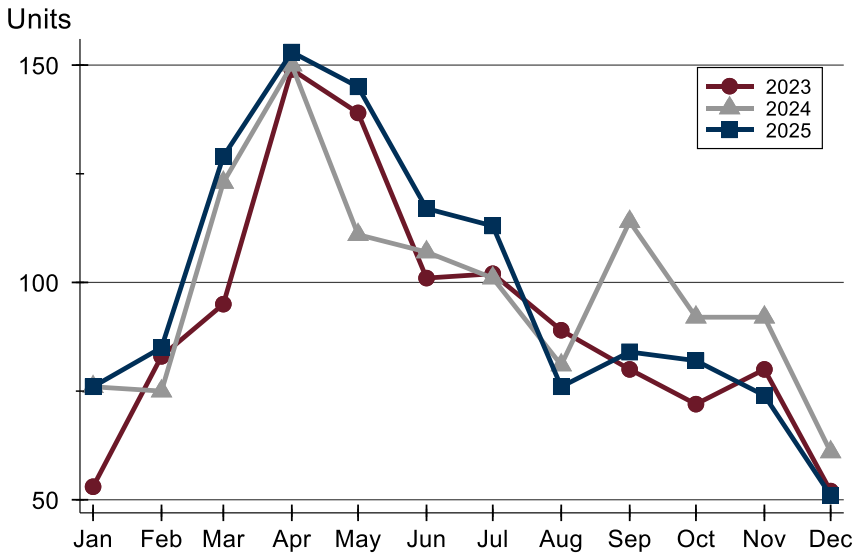
History of Pending Contracts





City of Lawrence Pending Contracts Analysis

Pending Contracts by Month



Month	2023	2024	2025
January	53	76	76
February	83	75	85
March	95	123	129
April	149	150	153
May	139	111	145
June	101	107	117
July	102	101	113
August	89	81	76
September	80	114	84
October	72	92	82
November	80	92	74
December	52	61	51

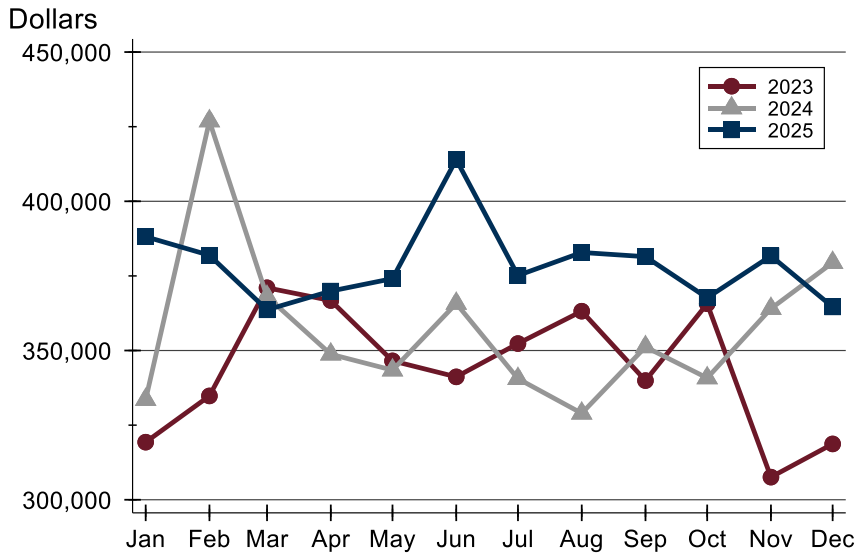
Pending Contracts by Price Range

Price Range	Pending Contracts Number	Percent	List Price Average	Median	Days on Market Avg.	Med.	Price as % of Orig. Avg.	Med.
Below \$50,000	0	0.0%	N/A	N/A	N/A	N/A	N/A	N/A
\$50,000-\$99,999	0	0.0%	N/A	N/A	N/A	N/A	N/A	N/A
\$100,000-\$149,999	3	5.9%	127,983	125,000	38	2	95.8%	100.0%
\$150,000-\$199,999	3	5.9%	184,900	184,900	39	28	98.3%	100.0%
\$200,000-\$249,999	4	7.8%	231,175	233,450	20	6	100.0%	100.0%
\$250,000-\$299,999	13	25.5%	270,819	269,900	27	15	98.1%	100.0%
\$300,000-\$349,999	5	9.8%	317,380	315,000	42	21	98.9%	100.0%
\$350,000-\$399,999	7	13.7%	383,529	385,000	15	3	100.0%	100.0%
\$400,000-\$449,999	3	5.9%	424,967	420,000	23	18	100.0%	100.0%
\$450,000-\$499,999	4	7.8%	479,700	489,450	21	19	100.0%	100.0%
\$500,000-\$599,999	6	11.8%	545,133	529,900	21	21	99.3%	100.0%
\$600,000-\$749,999	2	3.9%	687,500	687,500	66	66	100.0%	100.0%
\$750,000-\$999,999	0	0.0%	N/A	N/A	N/A	N/A	N/A	N/A
\$1,000,000 and up	1	2.0%	1,100,000	1,100,000	165	165	100.0%	100.0%



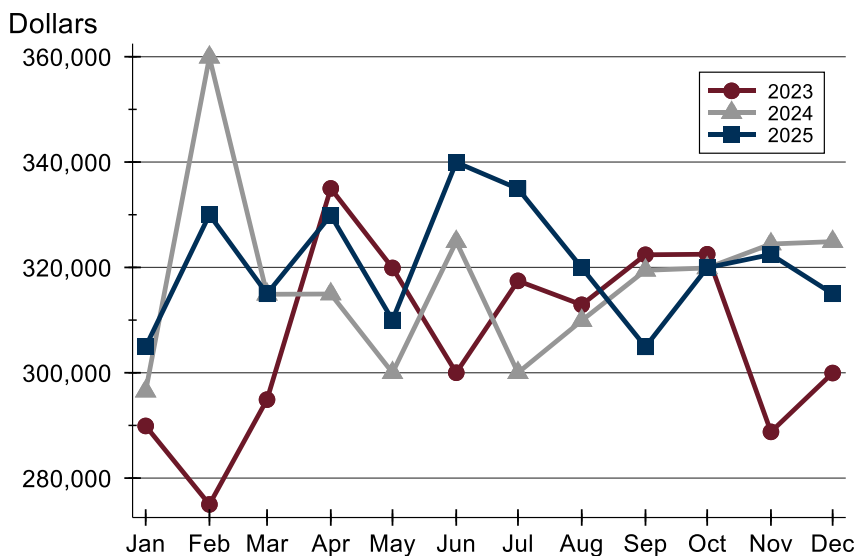
City of Lawrence Pending Contracts Analysis

Average Price



Month	2023	2024	2025
January	319,303	333,556	388,137
February	334,790	426,894	381,923
March	371,024	368,083	363,646
April	366,757	348,759	369,918
May	346,540	343,428	374,093
June	341,180	365,760	413,985
July	352,339	340,577	375,138
August	363,178	328,967	382,863
September	339,931	351,206	381,444
October	365,678	340,800	367,657
November	307,588	364,048	381,714
December	318,710	379,455	364,610

Median Price

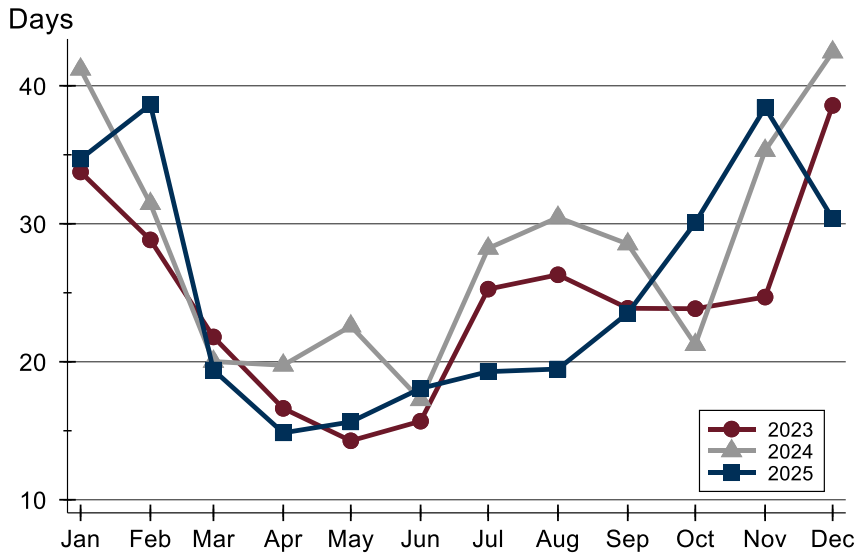


Month	2023	2024	2025
January	289,900	296,500	304,950
February	275,000	359,900	330,000
March	294,900	314,900	315,000
April	335,000	314,950	329,900
May	319,900	300,000	310,000
June	300,000	324,900	339,950
July	317,450	300,000	334,950
August	312,900	309,900	319,950
September	322,400	319,450	304,925
October	322,500	319,900	319,950
November	288,775	324,450	322,450
December	299,950	324,900	315,000



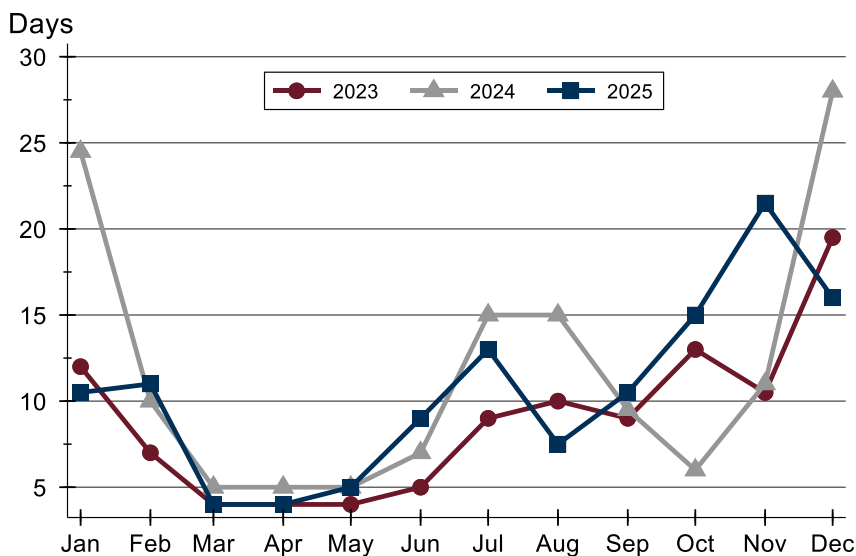
City of Lawrence Pending Contracts Analysis

Average DOM



Month	2023	2024	2025
January	34	41	35
February	29	31	39
March	22	20	19
April	17	20	15
May	14	23	16
June	16	17	18
July	25	28	19
August	26	30	19
September	24	29	24
October	24	21	30
November	25	35	38
December	39	42	30

Median DOM



Month	2023	2024	2025
January	12	25	11
February	7	10	11
March	4	5	4
April	4	5	4
May	4	5	5
June	5	7	9
July	9	15	13
August	10	15	8
September	9	10	11
October	13	6	15
November	11	11	22
December	20	28	16