



**March  
2025**

## Lawrence MLS Statistics



# City of Lawrence Housing Report



## Market Overview

### City of Lawrence Home Sales Rose in March

Total home sales in the City of Lawrence rose by 21.4% last month to 68 units, compared to 56 units in March 2024. Total sales volume was \$24.9 million, up 9.0% from a year earlier.

The median sale price in March was \$338,500, down from \$355,000 a year earlier. Homes that sold in March were typically on the market for 12 days and sold for 100.0% of their list prices.

### City of Lawrence Active Listings Down at End of March

The total number of active listings in the City of Lawrence at the end of March was 115 units, down from 124 at the same point in 2024. This represents a 1.5 months' supply of homes available for sale. The median list price of homes on the market at the end of March was \$345,900.

During March, a total of 117 contracts were written up from 106 in March 2024. At the end of the month, there were 129 contracts still pending.

## Report Contents

- Summary Statistics – Page 2
- Closed Listing Analysis – Page 3
- Active Listings Analysis – Page 7
- Months' Supply Analysis – Page 11
- New Listings Analysis – Page 12
- Contracts Written Analysis – Page 15
- Pending Contracts Analysis – Page 19

## Contact Information

Rob Hulse, Executive Vice-President  
Lawrence Board of REALTORS®  
3838 W. 6th Street (at Monterey)  
Lawrence, KS 66049  
785-842-1843  
[Rob@LawrenceRealtor.com](mailto:Rob@LawrenceRealtor.com)  
[www.LawrenceRealtor.com](http://www.LawrenceRealtor.com)



**March  
2025**

# Lawrence MLS Statistics



## City of Lawrence Summary Statistics

March MLS Statistics Three-year History		Current Month			Year-to-Date		
		2025	2024	2023	2025	2024	2023
<b>Home Sales</b> Change from prior year		<b>68</b> 21.4%	<b>56</b> -20.0%	<b>70</b> -5.4%	<b>174</b> 11.5%	<b>156</b> 4.7%	<b>149</b> -24.0%
<b>Active Listings</b> Change from prior year		<b>115</b> -7.3%	<b>124</b> 25.3%	<b>99</b> 23.8%	<b>N/A</b>	<b>N/A</b>	<b>N/A</b>
<b>Months' Supply</b> Change from prior year		<b>1.5</b> -11.8%	<b>1.7</b> 54.5%	<b>1.1</b> 57.1%	<b>N/A</b>	<b>N/A</b>	<b>N/A</b>
<b>New Listings</b> Change from prior year		<b>135</b> 4.7%	<b>129</b> 15.2%	<b>112</b> -20.6%	<b>265</b> -1.1%	<b>268</b> 17.5%	<b>228</b> -22.7%
<b>Contracts Written</b> Change from prior year		<b>117</b> 10.4%	<b>106</b> 29.3%	<b>82</b> -40.1%	<b>240</b> 7.1%	<b>224</b> 16.7%	<b>192</b> -28.6%
<b>Pending Contracts</b> Change from prior year		<b>129</b> 4.9%	<b>123</b> 29.5%	<b>95</b> -39.1%	<b>N/A</b>	<b>N/A</b>	<b>N/A</b>
<b>Sales Volume (1,000s)</b> Change from prior year		<b>24,902</b> 9.0%	<b>22,848</b> 9.4%	<b>20,891</b> -7.2%	<b>62,123</b> 16.0%	<b>53,537</b> 15.4%	<b>46,412</b> -21.2%
Average	<b>Sale Price</b> Change from prior year	<b>366,201</b> -10.2%	<b>408,006</b> 36.7%	<b>298,441</b> -1.9%	<b>357,026</b> 4.0%	<b>343,189</b> 10.2%	<b>311,488</b> 3.7%
	<b>List Price of Actives</b> Change from prior year	<b>426,670</b> 17.3%	<b>363,744</b> -10.2%	<b>405,067</b> 20.6%	<b>N/A</b>	<b>N/A</b>	<b>N/A</b>
	<b>Days on Market</b> Change from prior year	<b>46</b> 76.9%	<b>26</b> -10.3%	<b>29</b> 93.3%	<b>47</b> 42.4%	<b>33</b> 13.8%	<b>29</b> 52.6%
	<b>Percent of List</b> Change from prior year	<b>99.5%</b> -0.1%	<b>99.6%</b> -0.4%	<b>100.0%</b> -3.1%	<b>99.0%</b> 0.2%	<b>98.8%</b> -0.6%	<b>99.4%</b> -1.6%
	<b>Percent of Original</b> Change from prior year	<b>98.7%</b> -0.4%	<b>99.1%</b> -0.4%	<b>99.5%</b> -3.6%	<b>98.0%</b> 0.1%	<b>97.9%</b> -0.9%	<b>98.8%</b> -1.7%
Median	<b>Sale Price</b> Change from prior year	<b>338,500</b> -4.6%	<b>355,000</b> 31.7%	<b>269,600</b> -4.5%	<b>322,450</b> 5.7%	<b>305,000</b> 7.0%	<b>285,000</b> 2.2%
	<b>List Price of Actives</b> Change from prior year	<b>345,900</b> 6.4%	<b>324,950</b> -16.7%	<b>389,900</b> 15.5%	<b>N/A</b>	<b>N/A</b>	<b>N/A</b>
	<b>Days on Market</b> Change from prior year	<b>13</b> 116.7%	<b>6</b> 20.0%	<b>5</b> 66.7%	<b>17</b> 30.8%	<b>13</b> 85.7%	<b>7</b> 75.0%
	<b>Percent of List</b> Change from prior year	<b>100.0%</b> 0.0%	<b>100.0%</b> 0.0%	<b>100.0%</b> 0.0%	<b>100.0%</b> 0.0%	<b>100.0%</b> 0.0%	<b>100.0%</b> 0.0%
	<b>Percent of Original</b> Change from prior year	<b>100.0%</b> 0.0%	<b>100.0%</b> 0.0%	<b>100.0%</b> 0.0%	<b>99.0%</b> 0.0%	<b>99.0%</b> -1.0%	<b>100.0%</b> 0.0%

Note: Year-to-date statistics cannot be calculated for Active Listings, Months' Supply and Pending Contracts.



**March  
2025**

## Lawrence MLS Statistics



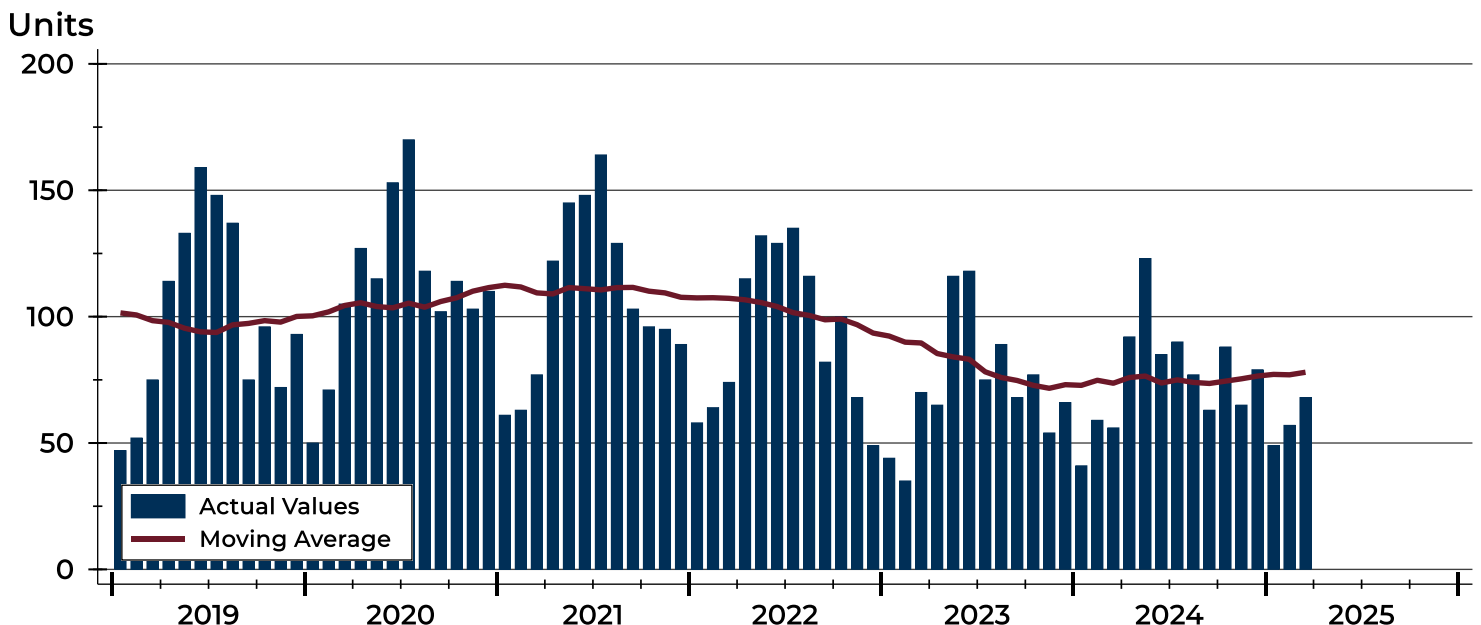
### City of Lawrence Closed Listings Analysis

Summary Statistics for Closed Listings		2025	March 2024	Change	2025	Year-to-Date 2024	Change
Closed Listings		<b>68</b>	56	21.4%	<b>174</b>	156	11.5%
Volume (1,000s)		<b>24,902</b>	22,848	9.0%	<b>62,123</b>	53,537	16.0%
Months' Supply		<b>1.5</b>	1.7	-11.8%	<b>N/A</b>	N/A	N/A
Average	Sale Price	<b>366,201</b>	408,006	-10.2%	<b>357,026</b>	343,189	4.0%
	Days on Market	<b>46</b>	26	76.9%	<b>47</b>	33	42.4%
	Percent of List	<b>99.5%</b>	99.6%	-0.1%	<b>99.0%</b>	98.8%	0.2%
	Percent of Original	<b>98.7%</b>	99.1%	-0.4%	<b>98.0%</b>	97.9%	0.1%
Median	Sale Price	<b>338,500</b>	355,000	-4.6%	<b>322,450</b>	305,000	5.7%
	Days on Market	<b>13</b>	6	116.7%	<b>17</b>	13	30.8%
	Percent of List	<b>100.0%</b>	100.0%	0.0%	<b>100.0%</b>	100.0%	0.0%
	Percent of Original	<b>100.0%</b>	100.0%	0.0%	<b>99.0%</b>	99.0%	0.0%

A total of 68 homes sold in the City of Lawrence in March, up from 56 units in March 2024. Total sales volume rose to \$24.9 million compared to \$22.8 million in the previous year.

The median sales price in March was \$338,500, down 4.6% compared to the prior year. Median days on market was 12 days, up from 9 days in February, and up from 6 in March 2024.

### History of Closed Listings





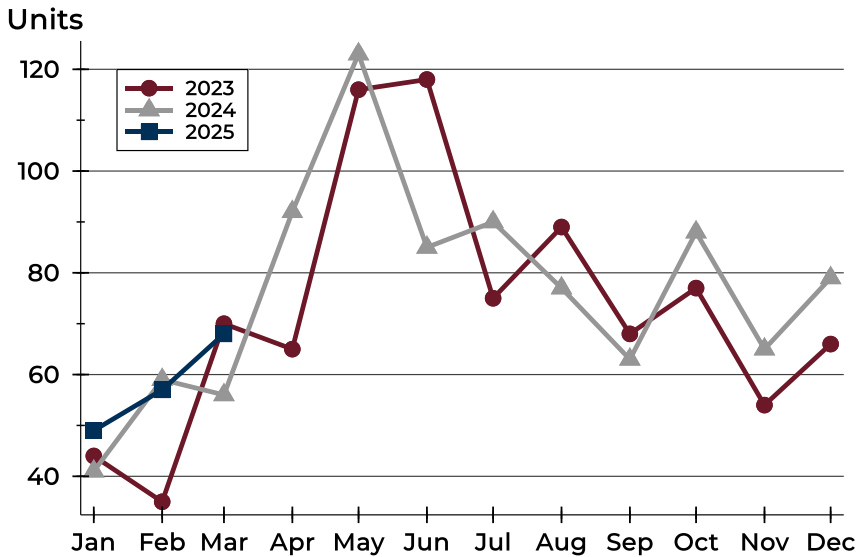
**March  
2025**

## Lawrence MLS Statistics



### City of Lawrence Closed Listings Analysis

#### Closed Listings by Month



Month	2023	2024	2025
January	44	41	49
February	35	59	57
March	70	56	68
April	65	92	
May	116	123	
June	118	85	
July	75	90	
August	89	77	
September	68	63	
October	77	88	
November	54	65	
December	66	79	

#### Closed Listings by Price Range

Price Range	Sales Number	Percent	Months' Supply	Sale Price Average	Median	Days on Market Avg.	Med.	Price as % of List Avg.	Med.	Price as % of Orig. Avg.	Med.
Below \$50,000	0	0.0%	N/A	N/A	N/A	N/A	N/A	N/A	N/A	N/A	N/A
\$50,000-\$99,999	1	1.5%	5.5	79,000	79,000	10	10	88.8%	88.8%	88.8%	88.8%
\$100,000-\$149,999	3	4.4%	4.8	121,833	120,000	3	3	99.4%	98.1%	99.4%	98.1%
\$150,000-\$199,999	4	5.9%	0.9	178,625	179,750	12	12	97.5%	97.5%	97.5%	97.5%
\$200,000-\$249,999	7	10.3%	0.8	224,486	225,000	20	17	101.5%	100.0%	100.2%	100.0%
\$250,000-\$299,999	9	13.2%	0.8	286,422	285,000	67	57	96.9%	100.0%	96.4%	98.2%
\$300,000-\$349,999	11	16.2%	1.3	319,182	315,000	28	3	103.6%	103.1%	101.9%	103.1%
\$350,000-\$399,999	11	16.2%	0.6	374,855	373,000	38	11	98.5%	100.0%	97.9%	98.9%
\$400,000-\$449,999	6	8.8%	1.7	420,750	424,250	37	24	99.4%	97.8%	99.4%	97.8%
\$450,000-\$499,999	4	5.9%	2.4	482,000	487,000	34	43	99.3%	99.2%	96.8%	96.5%
\$500,000-\$599,999	7	10.3%	1.0	548,386	549,900	140	112	100.0%	100.0%	99.5%	100.0%
\$600,000-\$749,999	3	4.4%	4.5	653,300	630,000	9	6	99.5%	100.0%	99.5%	100.0%
\$750,000-\$999,999	2	2.9%	3.2	854,000	854,000	115	115	97.0%	97.0%	95.7%	95.7%
\$1,000,000 and up	0	0.0%	N/A	N/A	N/A	N/A	N/A	N/A	N/A	N/A	N/A



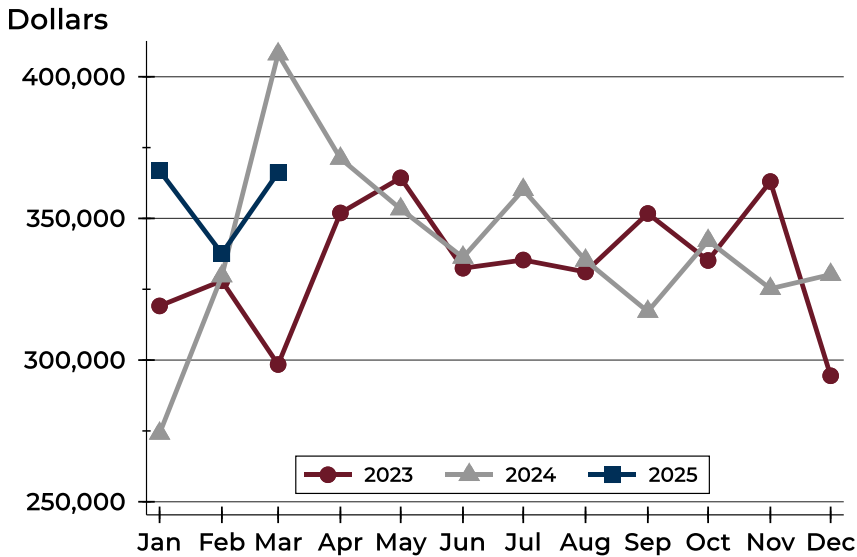
**March  
2025**

## Lawrence MLS Statistics



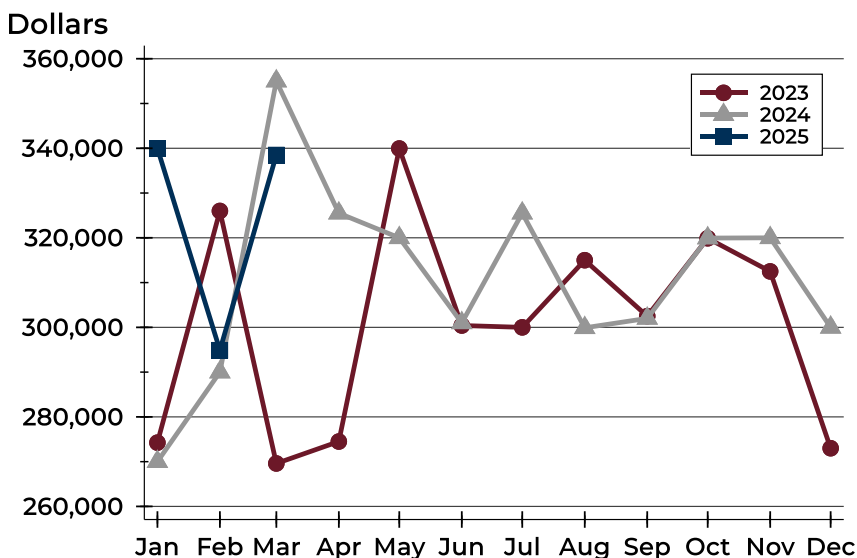
### City of Lawrence Closed Listings Analysis

#### Average Price



Month	2023	2024	2025
January	319,116	274,119	366,863
February	327,994	329,665	337,623
March	298,441	408,006	366,201
April	351,932	371,161	
May	364,323	353,316	
June	332,429	336,234	
July	335,322	360,140	
August	331,109	335,190	
September	351,738	317,140	
October	335,150	342,135	
November	363,014	325,193	
December	294,469	330,179	

#### Median Price



Month	2023	2024	2025
January	274,250	270,000	340,000
February	326,000	290,000	294,900
March	269,600	355,000	338,500
April	274,500	325,500	
May	339,950	320,000	
June	300,415	301,000	
July	300,000	325,500	
August	315,000	299,900	
September	302,500	302,000	
October	319,900	319,950	
November	312,500	320,000	
December	273,000	300,000	



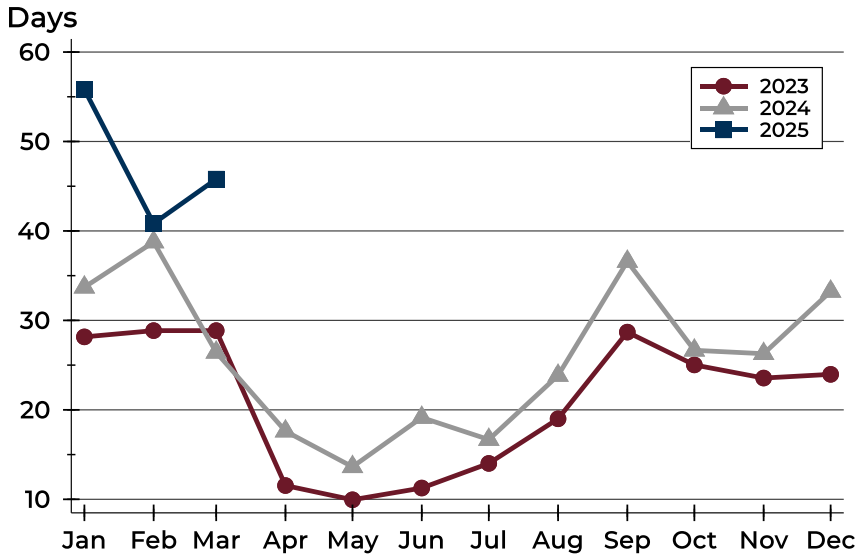
**March  
2025**

## Lawrence MLS Statistics



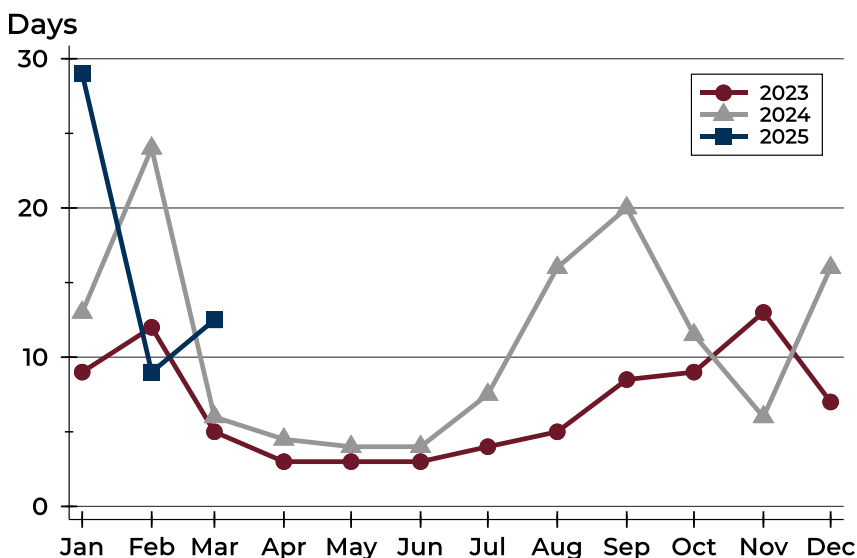
### City of Lawrence Closed Listings Analysis

#### Average DOM



Month	2023	2024	2025
January	28	34	56
February	29	39	41
March	29	26	46
April	12	18	
May	10	14	
June	11	19	
July	14	17	
August	19	24	
September	29	37	
October	25	27	
November	24	26	
December	24	33	

#### Median DOM



Month	2023	2024	2025
January	9	13	29
February	12	24	9
March	5	6	13
April	3	5	
May	3	4	
June	3	4	
July	4	8	
August	5	16	
September	9	20	
October	9	12	
November	13	6	
December	7	16	



**March  
2025**

## Lawrence MLS Statistics



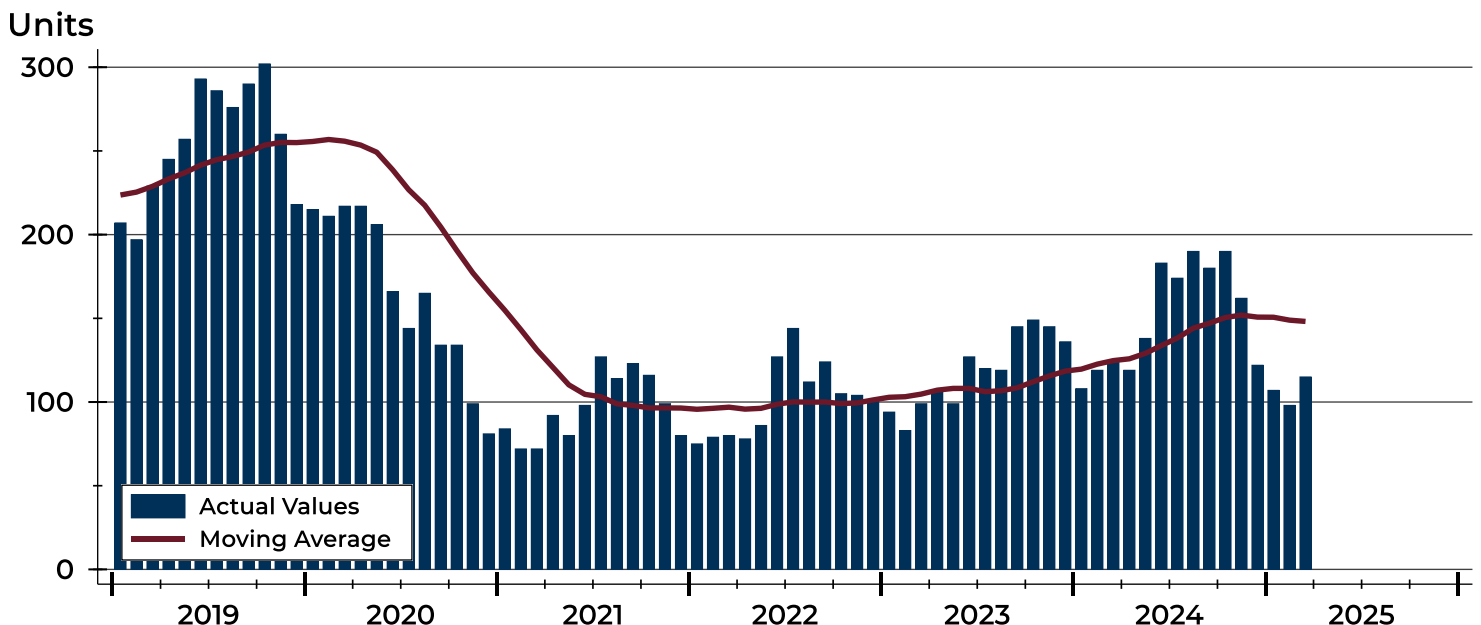
### City of Lawrence Active Listings Analysis

Summary Statistics for Active Listings		2025	End of March 2024	Change
Active Listings		115	124	-7.3%
Volume (1,000s)		49,067	45,104	8.8%
Months' Supply		1.5	1.7	-11.8%
Average	List Price	426,670	363,744	17.3%
	Days on Market	61	65	-6.2%
	Percent of Original	98.4%	99.4%	-1.0%
Median	List Price	345,900	324,950	6.4%
	Days on Market	31	37	-16.2%
	Percent of Original	100.0%	100.0%	0.0%

A total of 115 homes were available for sale in the City of Lawrence at the end of March. This represents a 1.5 months' supply of active listings.

The median list price of homes on the market at the end of March was \$345,900, up 6.4% from 2024. The typical time on market for active listings was 31 days, down from 37 days a year earlier.

### History of Active Listings





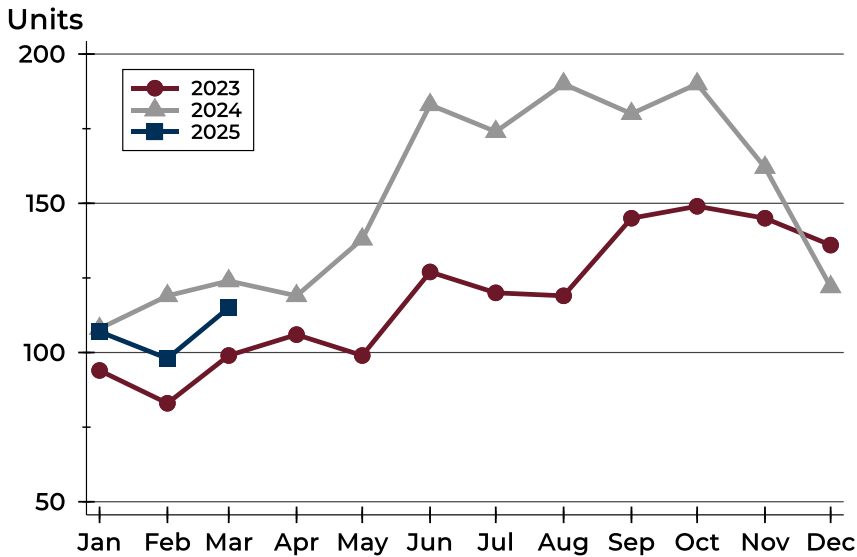
**March  
2025**

## Lawrence MLS Statistics



### City of Lawrence Active Listings Analysis

#### Active Listings by Month



Month	2023	2024	2025
January	94	108	107
February	83	119	98
March	99	124	115
April	106	119	
May	99	138	
June	127	183	
July	120	174	
August	119	190	
September	145	180	
October	149	190	
November	145	162	
December	136	122	

#### Active Listings by Price Range

Price Range	Active Listings Number	Percent	Months' Supply	List Price Average	Median	Days on Market Avg.	Med.	Price as % of Orig. Avg.	Med.
Below \$50,000	2	1.7%	N/A	1,748	1,748	32	32	100.0%	100.0%
\$50,000-\$99,999	5	4.3%	5.5	86,924	89,950	49	13	94.2%	100.0%
\$100,000-\$149,999	10	8.7%	4.8	130,710	131,950	40	23	96.8%	100.0%
\$150,000-\$199,999	6	5.2%	0.9	164,133	157,450	33	21	98.3%	100.0%
\$200,000-\$249,999	9	7.8%	0.8	230,678	230,000	42	22	99.9%	100.0%
\$250,000-\$299,999	11	9.6%	0.8	288,945	299,000	64	44	98.8%	100.0%
\$300,000-\$349,999	17	14.8%	1.3	332,918	339,900	99	19	97.9%	97.6%
\$350,000-\$399,999	6	5.2%	0.6	380,650	387,000	46	35	98.4%	98.7%
\$400,000-\$449,999	9	7.8%	1.7	434,278	435,000	20	26	99.0%	100.0%
\$450,000-\$499,999	11	9.6%	2.4	479,282	475,000	44	20	98.5%	100.0%
\$500,000-\$599,999	6	5.2%	1.0	542,317	539,500	67	62	98.1%	98.7%
\$600,000-\$749,999	12	10.4%	4.5	682,800	676,000	78	65	98.0%	100.0%
\$750,000-\$999,999	4	3.5%	3.2	803,500	782,500	55	17	99.4%	100.0%
\$1,000,000 and up	7	6.1%	N/A	1,328,136	1,195,000	128	32	101.9%	100.0%





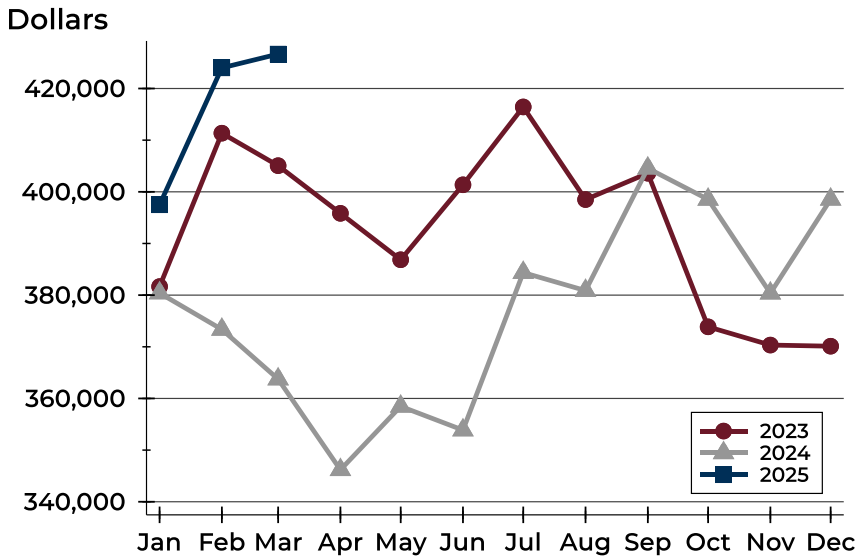
**March  
2025**

## Lawrence MLS Statistics



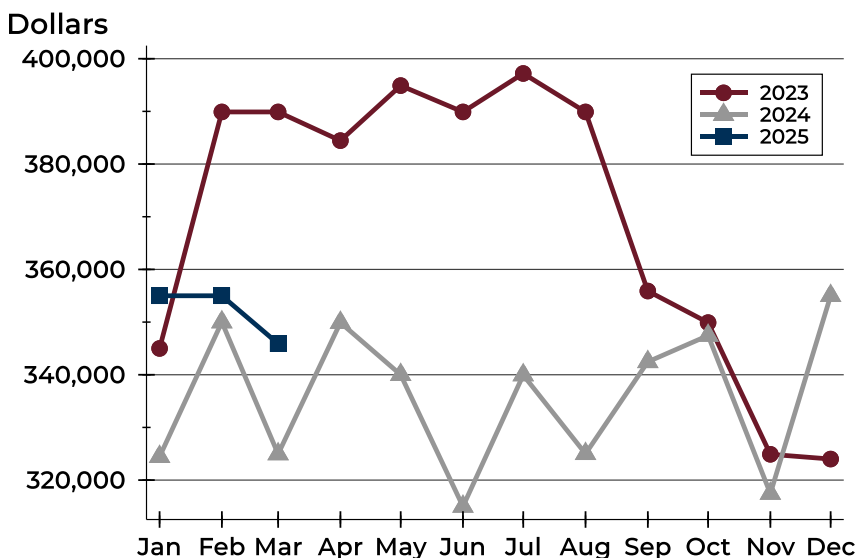
### City of Lawrence Active Listings Analysis

#### Average Price



Month	2023	2024	2025
January	381,662	380,405	397,492
February	411,359	373,361	423,998
March	405,067	363,744	426,670
April	395,842	346,189	
May	386,853	358,466	
June	401,362	353,875	
July	416,435	384,366	
August	398,505	380,883	
September	403,598	404,570	
October	373,865	398,530	
November	370,337	380,374	
December	370,118	398,546	

#### Median Price



Month	2023	2024	2025
January	345,000	324,450	355,000
February	389,900	350,000	355,000
March	389,900	324,950	345,900
April	384,450	349,900	
May	394,900	340,000	
June	389,900	315,000	
July	397,200	339,950	
August	389,900	325,000	
September	355,900	342,450	
October	349,900	347,450	
November	324,900	317,450	
December	324,000	355,000	



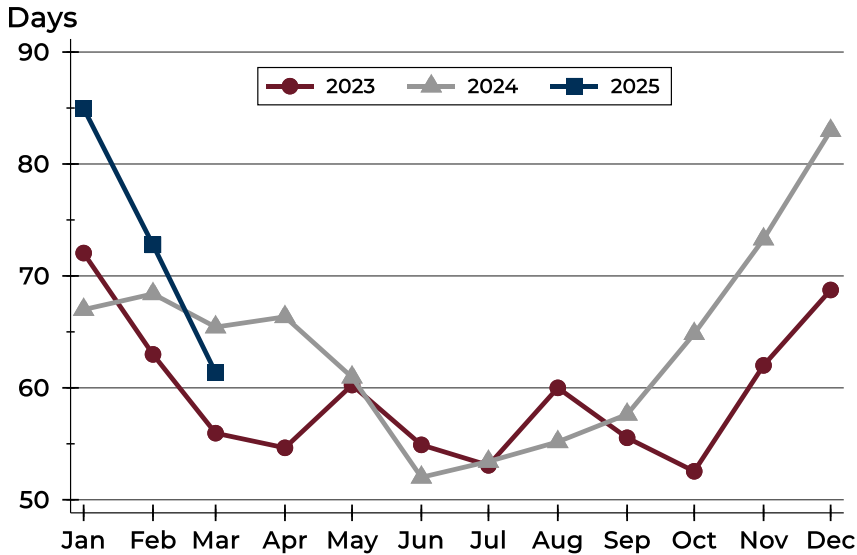
**March  
2025**

## Lawrence MLS Statistics



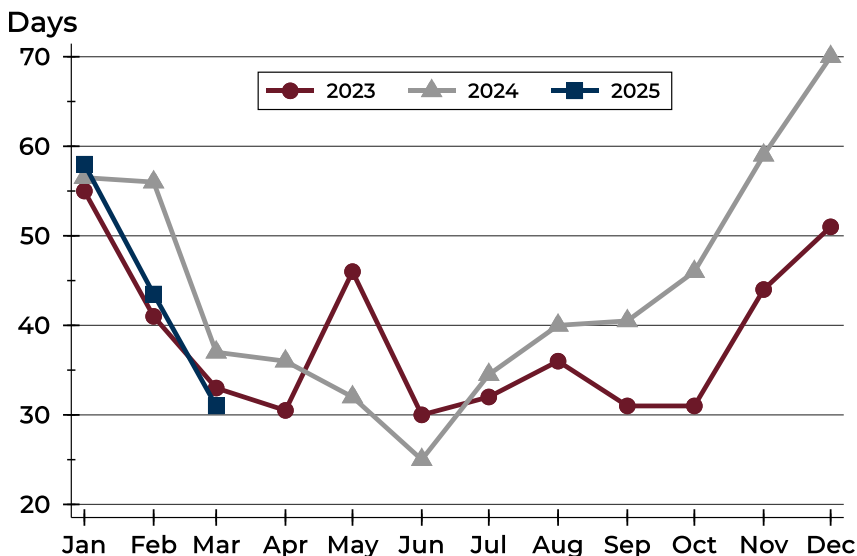
### City of Lawrence Active Listings Analysis

#### Average DOM



Month	2023	2024	2025
January	72	67	85
February	63	68	73
March	56	65	61
April	55	66	
May	60	61	
June	55	52	
July	53	53	
August	60	55	
September	56	58	
October	53	65	
November	62	73	
December	69	83	

#### Median DOM



Month	2023	2024	2025
January	55	57	58
February	41	56	44
March	33	37	31
April	31	36	
May	46	32	
June	30	25	
July	32	35	
August	36	40	
September	31	41	
October	31	46	
November	44	59	
December	51	70	



**March  
2025**

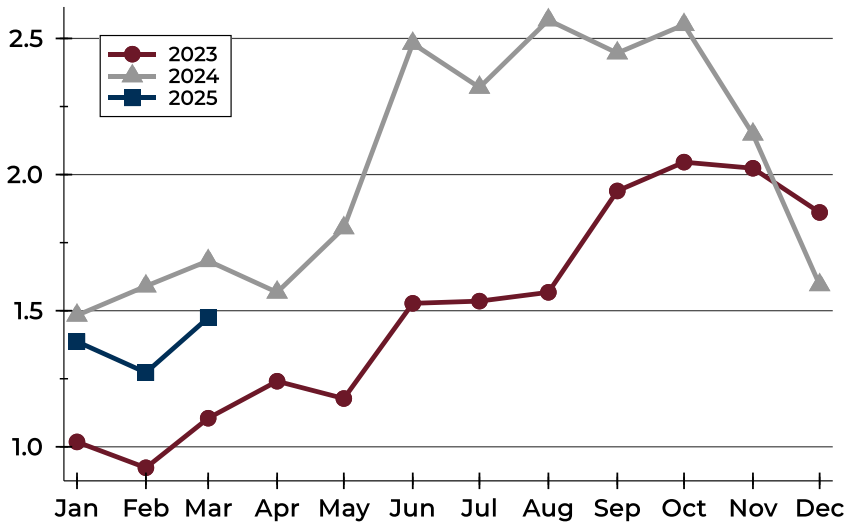
## Lawrence MLS Statistics



### City of Lawrence Months' Supply Analysis

#### Months' Supply by Month

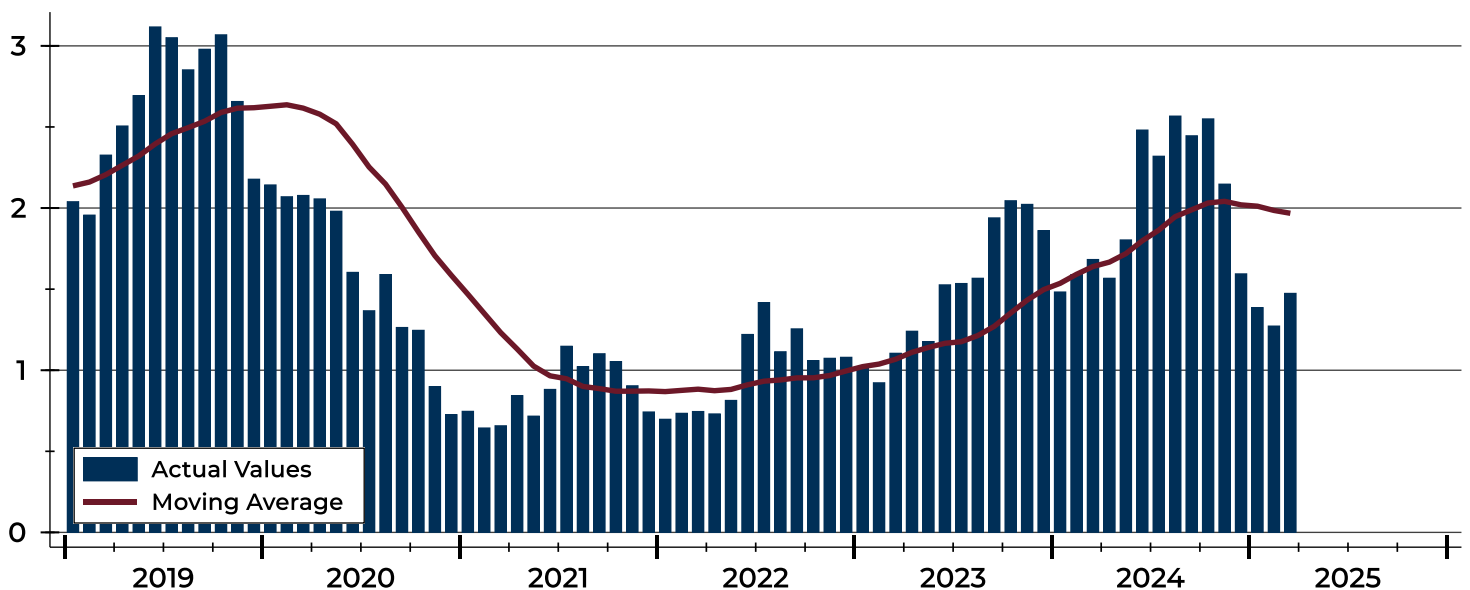
Months



Month	2023	2024	2025
January	1.0	1.5	1.4
February	0.9	1.6	1.3
March	1.1	1.7	1.5
April	1.2	1.6	
May	1.2	1.8	
June	1.5	2.5	
July	1.5	2.3	
August	1.6	2.6	
September	1.9	2.4	
October	2.0	2.6	
November	2.0	2.1	
December	1.9	1.6	

#### History of Month's Supply

Months





**March  
2025**

## Lawrence MLS Statistics



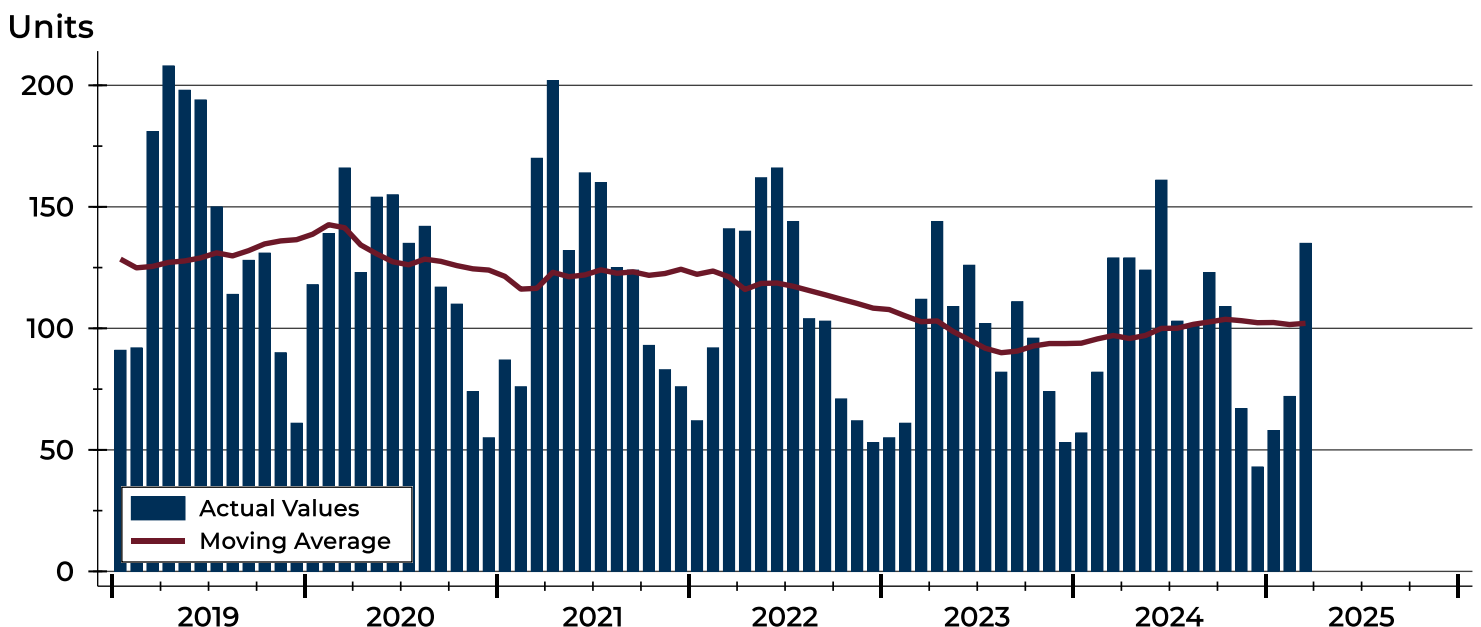
### City of Lawrence New Listings Analysis

Summary Statistics for New Listings		2025	March 2024	Change
Current Month	New Listings	135	129	4.7%
	Volume (1,000s)	50,427	44,462	13.4%
	Average List Price	373,532	344,669	8.4%
	Median List Price	325,000	310,000	4.8%
Year-to-Date	New Listings	265	268	-1.1%
	Volume (1,000s)	99,129	97,701	1.5%
	Average List Price	374,073	364,555	2.6%
	Median List Price	320,000	314,950	1.6%

A total of 135 new listings were added in the City of Lawrence during March, up 4.7% from the same month in 2024. Year-to-date the City of Lawrence has seen 265 new listings.

The median list price of these homes was \$325,000 up from \$310,000 in 2024.

### History of New Listings





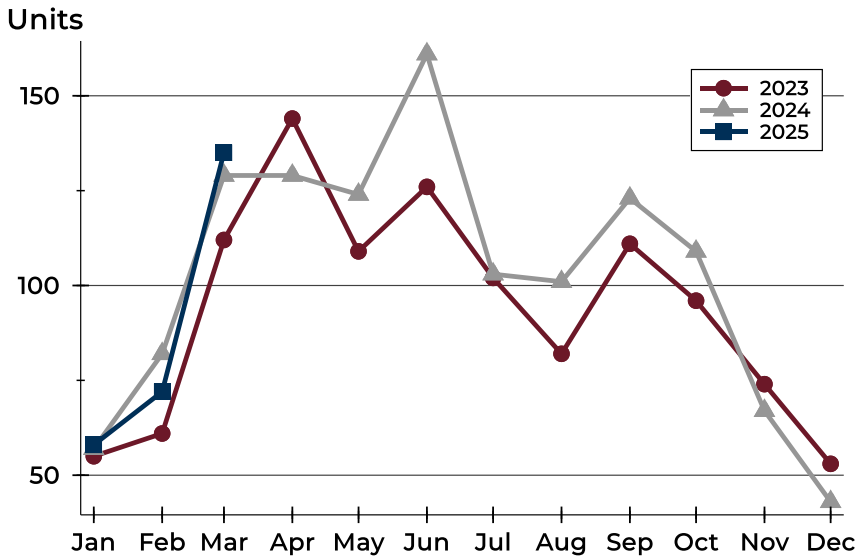
**March  
2025**

## Lawrence MLS Statistics



### City of Lawrence New Listings Analysis

#### New Listings by Month



Month	2023	2024	2025
January	55	57	58
February	61	82	72
March	112	129	135
April	144	129	
May	109	124	
June	126	161	
July	102	103	
August	82	101	
September	111	123	
October	96	109	
November	74	67	
December	53	43	

#### New Listings by Price Range

Price Range	New Listings Number	Percent	List Price Average	Median	Days on Market Avg.	Med.	Price as % of Orig. Avg.	Med.
Below \$50,000	0	0.0%	N/A	N/A	N/A	N/A	N/A	N/A
\$50,000-\$99,999	3	2.2%	93,000	95,000	7	10	96.3%	100.0%
\$100,000-\$149,999	4	3.0%	132,375	137,250	13	11	100.6%	100.0%
\$150,000-\$199,999	10	7.4%	179,760	191,500	5	3	100.0%	100.0%
\$200,000-\$249,999	16	11.9%	223,813	224,950	10	6	100.0%	100.0%
\$250,000-\$299,999	26	19.3%	278,904	277,450	7	4	99.8%	100.0%
\$300,000-\$349,999	23	17.0%	326,913	325,000	8	3	99.8%	100.0%
\$350,000-\$399,999	12	8.9%	377,729	379,975	7	5	99.6%	100.0%
\$400,000-\$449,999	11	8.1%	424,355	428,500	12	4	99.6%	100.0%
\$450,000-\$499,999	8	5.9%	476,225	475,000	10	9	100.1%	100.0%
\$500,000-\$599,999	6	4.4%	547,483	542,450	7	6	98.8%	100.0%
\$600,000-\$749,999	9	6.7%	671,944	629,900	15	16	99.3%	100.0%
\$750,000-\$999,999	4	3.0%	824,350	799,750	15	13	100.0%	100.0%
\$1,000,000 and up	3	2.2%	1,276,317	1,179,000	31	32	110.1%	100.0%



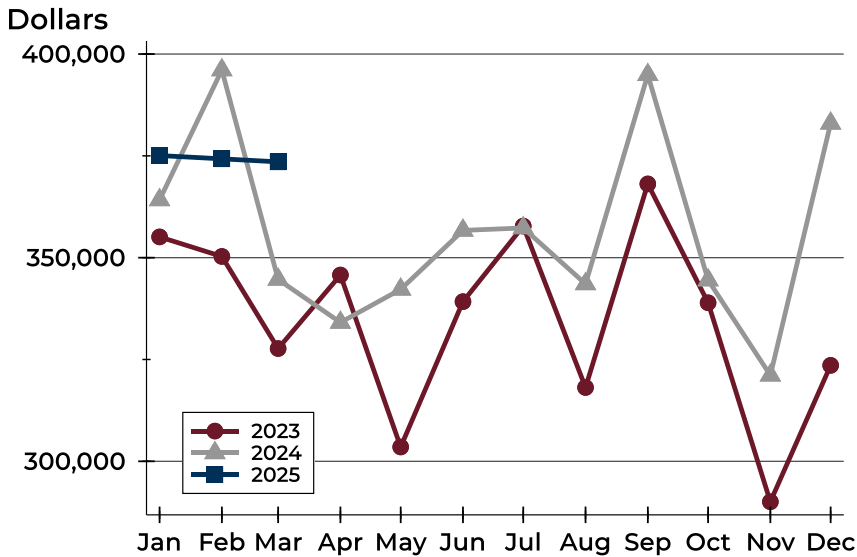
March  
2025

## Lawrence MLS Statistics



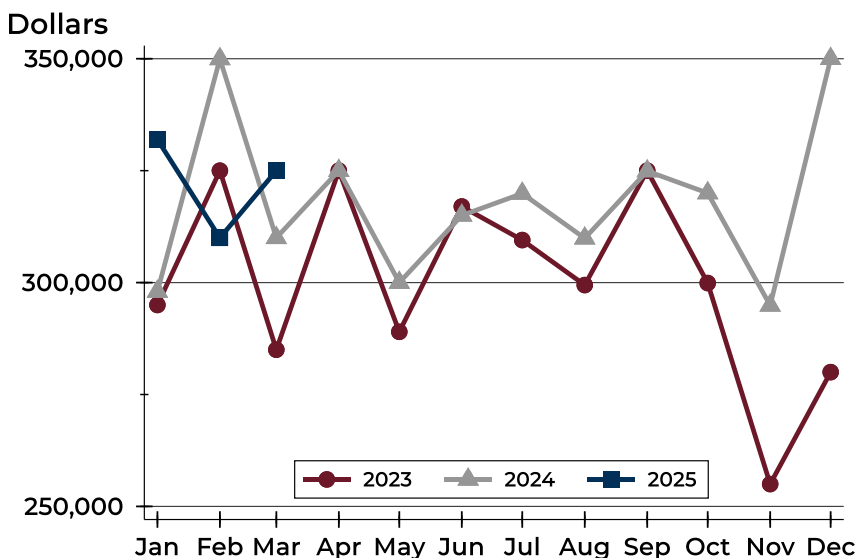
### City of Lawrence New Listings Analysis

#### Average Price



Month	2023	2024	2025
January	355,103	364,190	375,082
February	350,309	396,092	374,274
March	327,690	344,669	373,532
April	345,750	334,092	
May	303,520	342,222	
June	339,209	356,704	
July	357,767	357,307	
August	318,123	343,558	
September	368,120	394,917	
October	338,933	344,494	
November	290,067	321,130	
December	323,562	382,988	

#### Median Price



Month	2023	2024	2025
January	295,000	298,000	331,950
February	325,000	349,950	310,000
March	285,000	310,000	325,000
April	325,000	325,000	
May	289,000	300,000	
June	317,000	315,000	
July	309,500	319,900	
August	299,450	309,900	
September	325,000	324,900	
October	299,900	320,000	
November	255,000	294,900	
December	280,000	350,000	



**March  
2025**

## Lawrence MLS Statistics



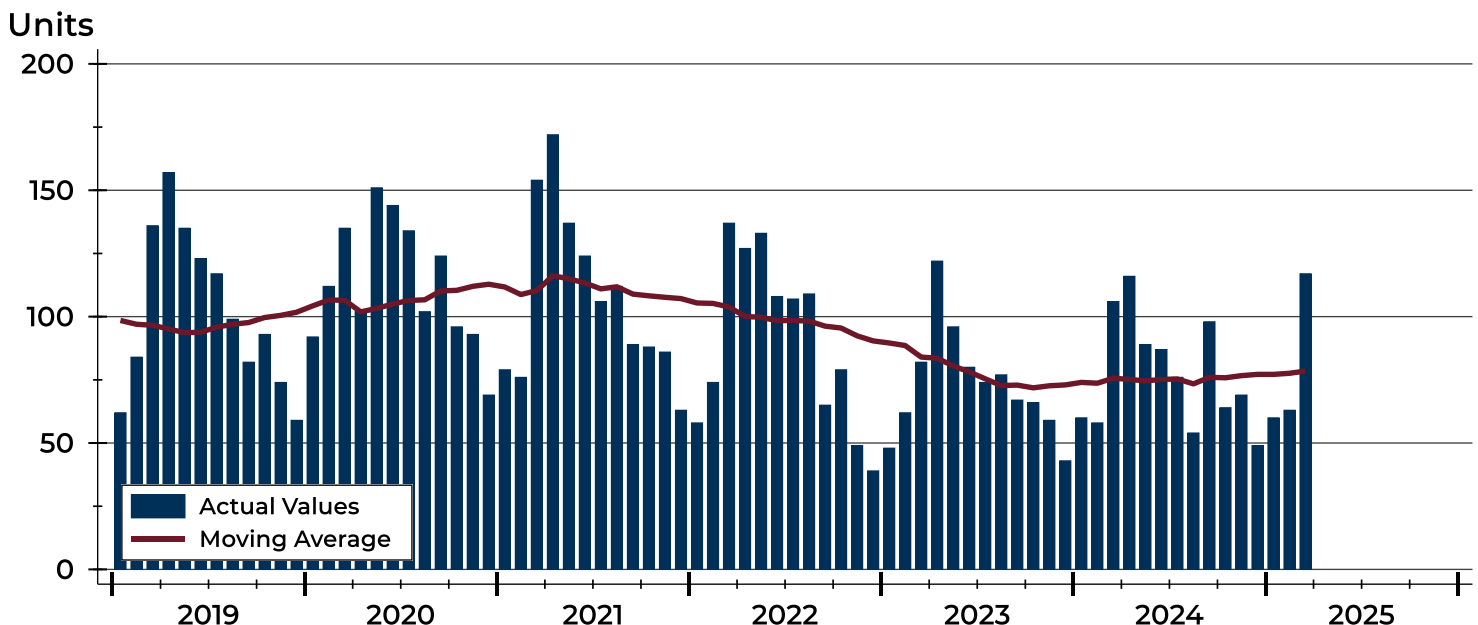
### City of Lawrence Contracts Written Analysis

Summary Statistics for Contracts Written		2025	March 2024	Change	Year-to-Date		2025	2024	Change
Contracts Written		117	106	10.4%			240	224	7.1%
Volume (1,000s)		41,668	38,377	8.6%			86,384	83,291	3.7%
Average	Sale Price	356,139	362,046	-1.6%			359,934	371,836	-3.2%
	Days on Market	20	17	17.6%			32	25	28.0%
	Percent of Original	99.5%	100.4%	-0.9%			99.1%	99.1%	0.0%
Median	Sale Price	320,000	325,000	-1.5%			315,000	322,450	-2.3%
	Days on Market	4	4	0.0%			6	6	0.0%
	Percent of Original	100.0%	100.0%	0.0%			100.0%	100.0%	0.0%

A total of 117 contracts for sale were written in the City of Lawrence during the month of March, up from 106 in 2024. The median list price of these homes was \$320,000, down from \$325,000 the prior year.

Half of the homes that went under contract in March were on the market less than 4 days, compared to 4 days in March 2024.

### History of Contracts Written





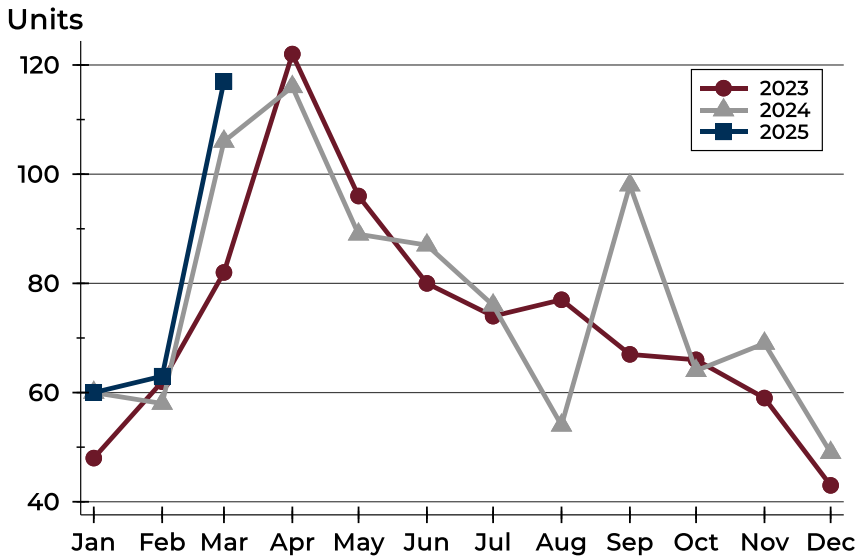
**March  
2025**

## Lawrence MLS Statistics



### City of Lawrence Contracts Written Analysis

#### Contracts Written by Month



Month	2023	2024	2025
January	48	60	60
February	62	58	63
March	82	106	117
April	122	116	
May	96	89	
June	80	87	
July	74	76	
August	77	54	
September	67	98	
October	66	64	
November	59	69	
December	43	49	

#### Contracts Written by Price Range

Price Range	Contracts Written Number	Percent	List Price Average	Median	Days on Market Avg.	Med.	Price as % of Orig. Avg.	Med.
Below \$50,000	0	0.0%	N/A	N/A	N/A	N/A	N/A	N/A
\$50,000-\$99,999	2	1.7%	92,000	92,000	6	6	94.4%	94.4%
\$100,000-\$149,999	2	1.7%	127,500	127,500	5	5	101.3%	101.3%
\$150,000-\$199,999	9	7.7%	185,289	190,000	6	2	100.0%	100.0%
\$200,000-\$249,999	16	13.7%	228,888	229,950	23	6	99.2%	100.0%
\$250,000-\$299,999	24	20.5%	278,442	275,000	6	3	100.3%	100.0%
\$300,000-\$349,999	16	13.7%	323,531	325,000	15	2	100.4%	100.0%
\$350,000-\$399,999	14	12.0%	377,918	382,000	32	7	99.9%	100.0%
\$400,000-\$449,999	11	9.4%	424,364	428,500	21	4	99.5%	100.0%
\$450,000-\$499,999	7	6.0%	480,114	476,900	31	12	98.2%	100.0%
\$500,000-\$599,999	5	4.3%	552,960	549,900	51	10	95.4%	100.0%
\$600,000-\$749,999	8	6.8%	694,700	694,500	43	7	98.7%	100.0%
\$750,000-\$999,999	3	2.6%	799,433	799,500	7	10	100.0%	100.0%
\$1,000,000 and up	0	0.0%	N/A	N/A	N/A	N/A	N/A	N/A





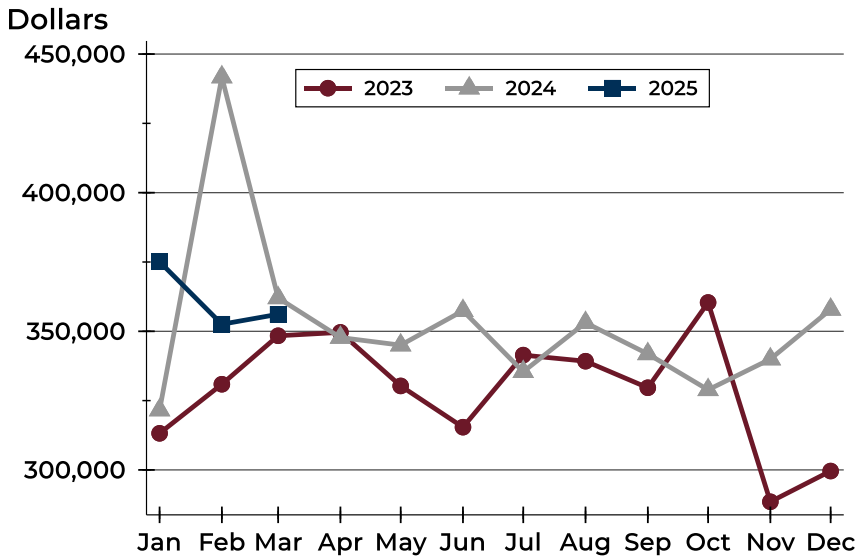
**March  
2025**

## Lawrence MLS Statistics



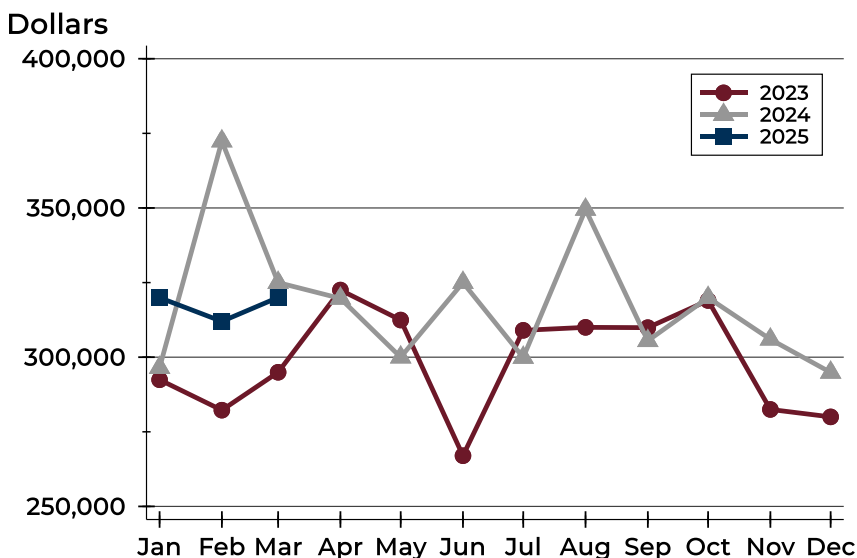
### City of Lawrence Contracts Written Analysis

#### Average Price



Month	2023	2024	2025
January	313,207	321,588	375,092
February	330,911	441,710	352,547
March	348,394	362,046	356,139
April	349,615	347,752	
May	330,296	345,003	
June	315,423	357,422	
July	341,411	335,414	
August	339,212	353,100	
September	329,643	341,849	
October	360,391	328,893	
November	288,514	339,976	
December	299,601	357,882	

#### Median Price



Month	2023	2024	2025
January	292,450	296,500	319,950
February	282,250	372,400	312,000
March	294,950	325,000	320,000
April	322,500	319,700	
May	312,450	300,000	
June	267,000	325,000	
July	309,000	299,900	
August	310,000	349,500	
September	309,900	305,500	
October	319,000	319,950	
November	282,500	306,000	
December	280,000	294,900	



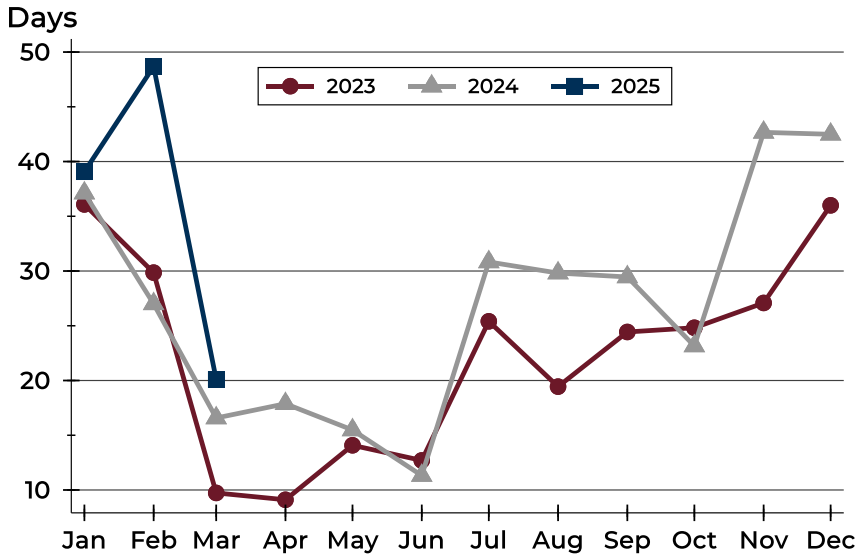
March  
2025

## Lawrence MLS Statistics



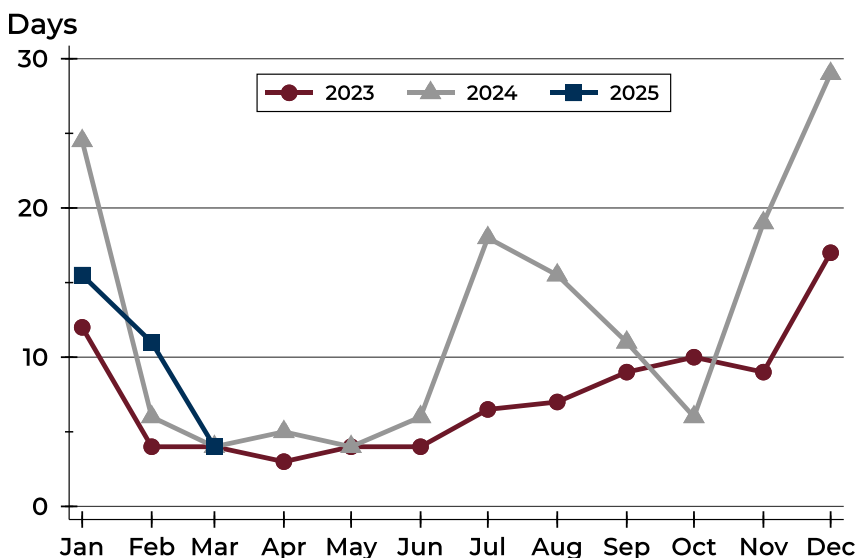
### City of Lawrence Contracts Written Analysis

#### Average DOM



Month	2023	2024	2025
January	36	37	39
February	30	27	49
March	10	17	20
April	9	18	
May	14	15	
June	13	11	
July	25	31	
August	19	30	
September	24	29	
October	25	23	
November	27	43	
December	36	42	

#### Median DOM



Month	2023	2024	2025
January	12	25	16
February	4	6	11
March	4	4	4
April	3	5	
May	4	4	
June	4	6	
July	7	18	
August	7	16	
September	9	11	
October	10	6	
November	9	19	
December	17	29	



**March  
2025**

## Lawrence MLS Statistics



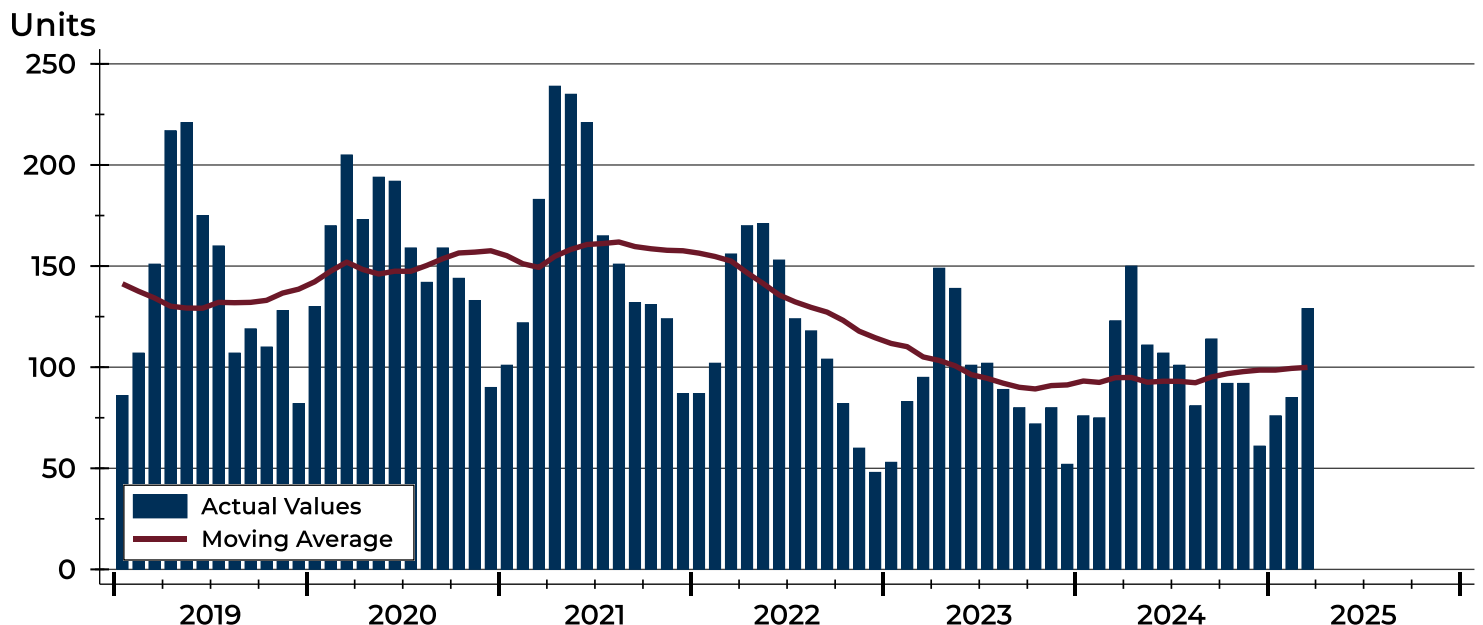
### City of Lawrence Pending Contracts Analysis

Summary Statistics for Pending Contracts		2025	End of March 2024	Change
Pending Contracts		<b>129</b>	123	4.9%
Volume (1,000s)		<b>46,910</b>	45,274	3.6%
Average	List Price	<b>363,646</b>	368,083	-1.2%
	Days on Market	<b>19</b>	20	-5.0%
	Percent of Original	<b>99.4%</b>	99.2%	0.2%
Median	List Price	<b>315,000</b>	314,900	0.0%
	Days on Market	<b>4</b>	5	-20.0%
	Percent of Original	<b>100.0%</b>	100.0%	0.0%

A total of 129 listings in the City of Lawrence had contracts pending at the end of March, up from 123 contracts pending at the end of March 2024.

Pending contracts reflect listings with a contract in place at the end of the month. In contrast, contracts written measures the number of listings put under contract during the month.

### History of Pending Contracts





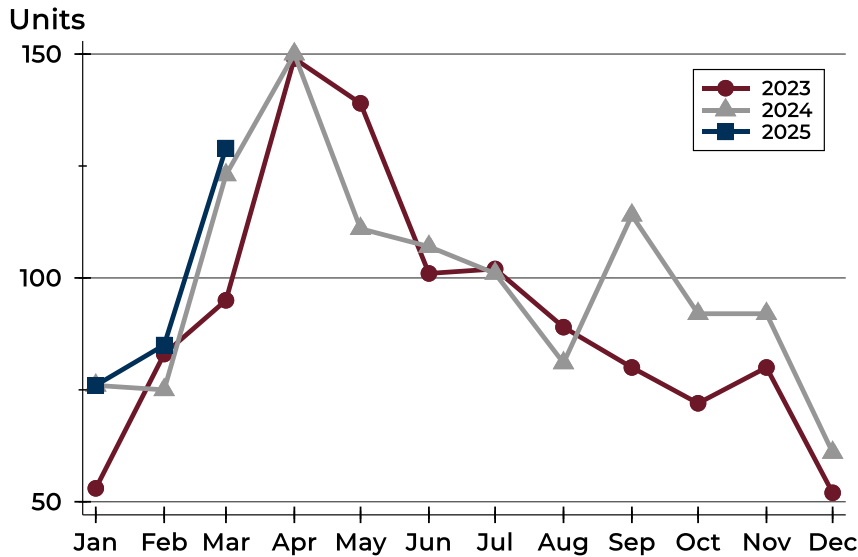
**March  
2025**

## Lawrence MLS Statistics



### City of Lawrence Pending Contracts Analysis

#### Pending Contracts by Month



Month	2023	2024	2025
January	53	76	76
February	83	75	85
March	95	123	129
April	149	150	
May	139	111	
June	101	107	
July	102	101	
August	89	81	
September	80	114	
October	72	92	
November	80	92	
December	52	61	

#### Pending Contracts by Price Range

Price Range	Pending Contracts Number	Percent	List Price Average	Median	Days on Market Avg.	Med.	Price as % of Orig. Avg.	Med.
Below \$50,000	0	0.0%	N/A	N/A	N/A	N/A	N/A	N/A
\$50,000-\$99,999	1	0.8%	95,000	95,000	1	1	100.0%	100.0%
\$100,000-\$149,999	5	3.9%	127,970	126,000	29	8	97.5%	100.0%
\$150,000-\$199,999	10	7.8%	182,740	189,950	20	5	99.5%	100.0%
\$200,000-\$249,999	17	13.2%	228,659	230,000	20	4	99.3%	100.0%
\$250,000-\$299,999	27	20.9%	277,973	275,000	7	4	99.7%	100.0%
\$300,000-\$349,999	16	12.4%	323,844	325,000	15	2	100.0%	100.0%
\$350,000-\$399,999	12	9.3%	378,071	382,000	23	6	99.8%	100.0%
\$400,000-\$449,999	12	9.3%	423,583	426,750	19	5	99.5%	100.0%
\$450,000-\$499,999	5	3.9%	469,160	464,900	28	9	99.3%	100.0%
\$500,000-\$599,999	8	6.2%	549,350	544,950	39	7	97.1%	100.0%
\$600,000-\$749,999	12	9.3%	678,033	677,500	30	4	99.2%	100.0%
\$750,000-\$999,999	4	3.1%	819,325	799,700	12	10	100.0%	100.0%
\$1,000,000 and up	0	0.0%	N/A	N/A	N/A	N/A	N/A	N/A



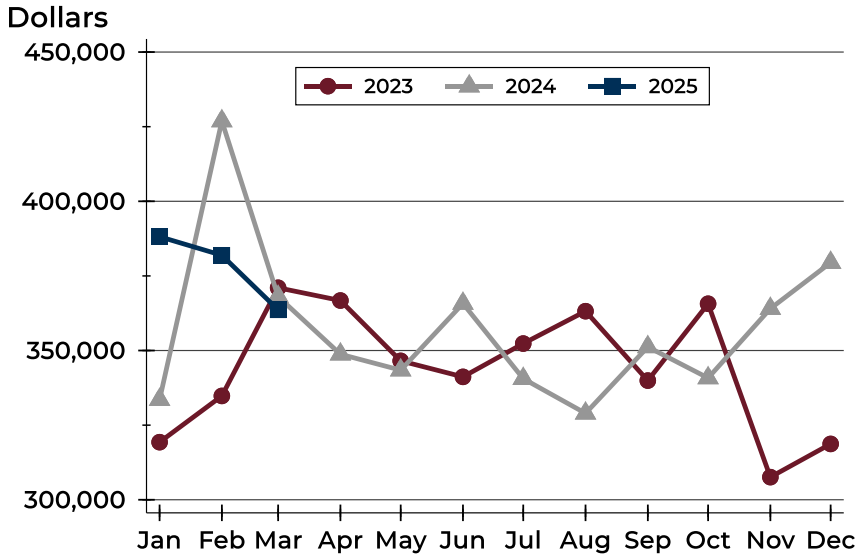
**March  
2025**

## Lawrence MLS Statistics



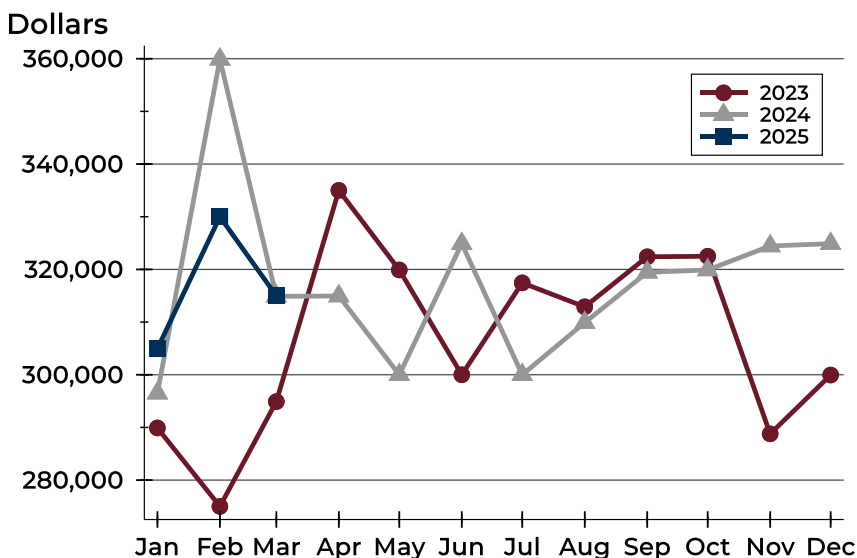
### City of Lawrence Pending Contracts Analysis

#### Average Price



Month	2023	2024	2025
January	319,303	333,556	388,137
February	334,790	426,894	381,923
March	371,024	368,083	363,646
April	366,757	348,759	
May	346,540	343,428	
June	341,180	365,760	
July	352,339	340,577	
August	363,178	328,967	
September	339,931	351,206	
October	365,678	340,800	
November	307,588	364,048	
December	318,710	379,455	

#### Median Price



Month	2023	2024	2025
January	289,900	296,500	304,950
February	275,000	359,900	330,000
March	294,900	314,900	315,000
April	335,000	314,950	
May	319,900	300,000	
June	300,000	324,900	
July	317,450	300,000	
August	312,900	309,900	
September	322,400	319,450	
October	322,500	319,900	
November	288,775	324,450	
December	299,950	324,900	



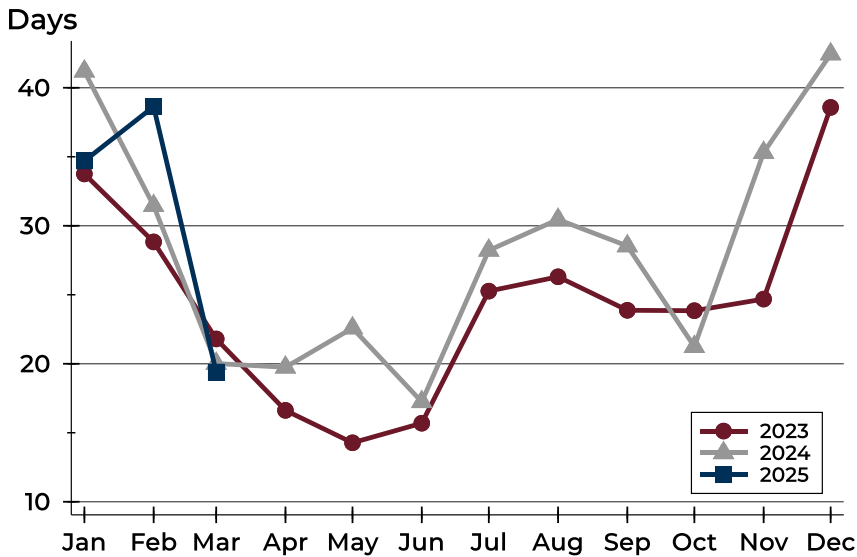
**March  
2025**

## Lawrence MLS Statistics



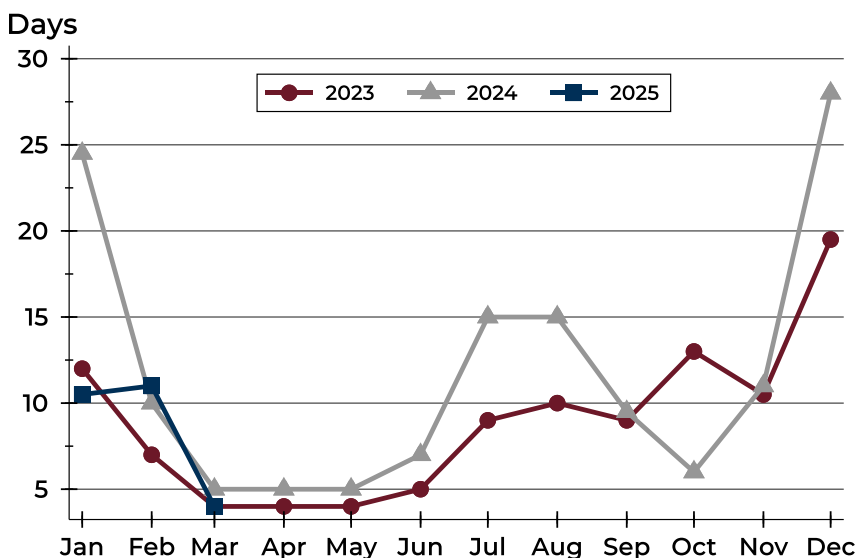
### City of Lawrence Pending Contracts Analysis

#### Average DOM



Month	2023	2024	2025
January	34	41	35
February	29	31	39
March	22	20	19
April	17	20	
May	14	23	
June	16	17	
July	25	28	
August	26	30	
September	24	29	
October	24	21	
November	25	35	
December	39	42	

#### Median DOM



Month	2023	2024	2025
January	12	25	11
February	7	10	11
March	4	5	4
April	4	5	
May	4	5	
June	5	7	
July	9	15	
August	10	15	
September	9	10	
October	13	6	
November	11	11	
December	20	28	